

Antenna Coding: ANT-BBNCNC22014

Antenna Type: PCB onboard Antenna, Patch Antenna

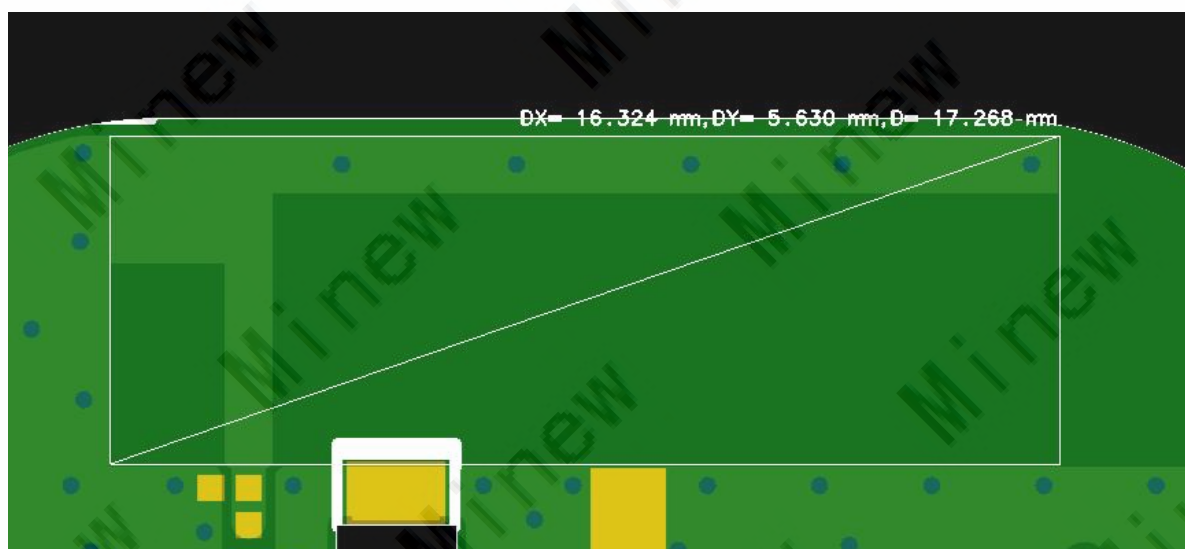
Model of the DUT: MBT02

Antenna Manufacturer: Shenzhen Minew Technologies Co., Ltd.

1、Technical Specification

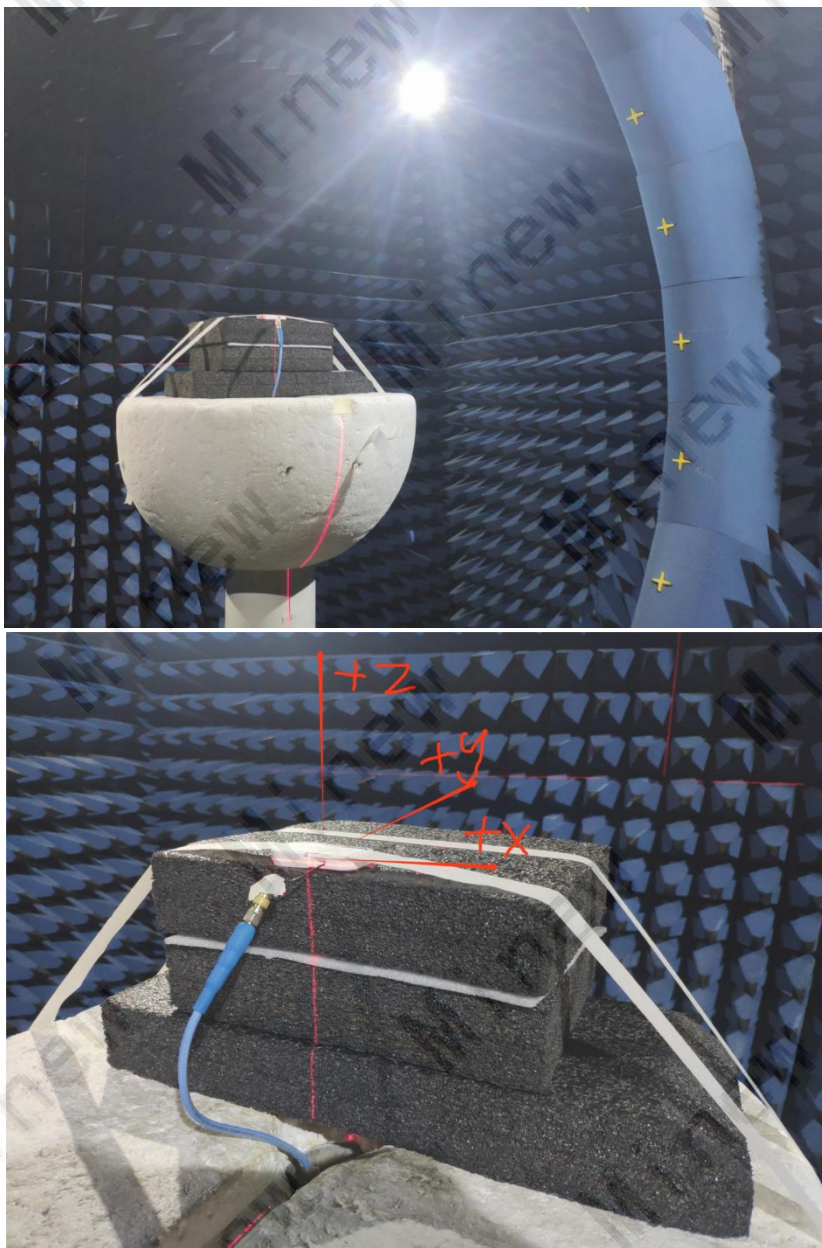
| Electrical Specifications | |
|------------------------------|---------------------|
| Frequency Range (MHz) | 2402-2480 |
| Input Impedance (Ω) | 50 |
| Return Loss (dB) | <-15dB |
| VSWR | <1.5 |
| Peak Gain (dBi) | 3.38 |
| Polarization Type | Linear polarization |
| Mechanical Specifications | |
| Antenna Size (mm) | 16.32*5.63 |
| Radiator | Cuprum |

2、The shape and size of the antenna



3、The result of the test

3.1 Test Environment

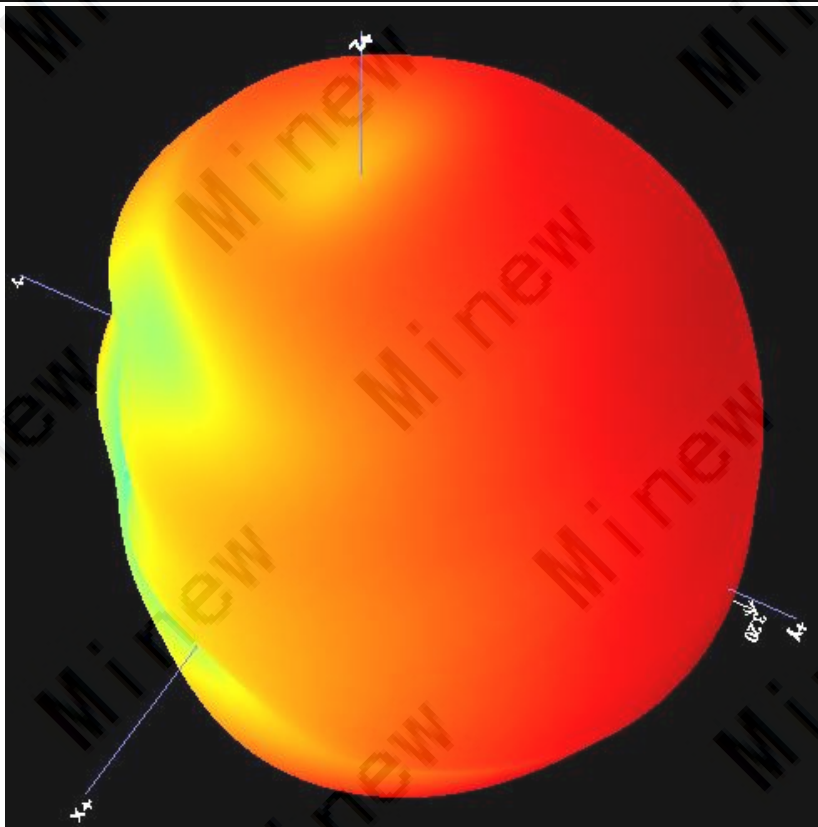


3.2 Gain and Efficiency

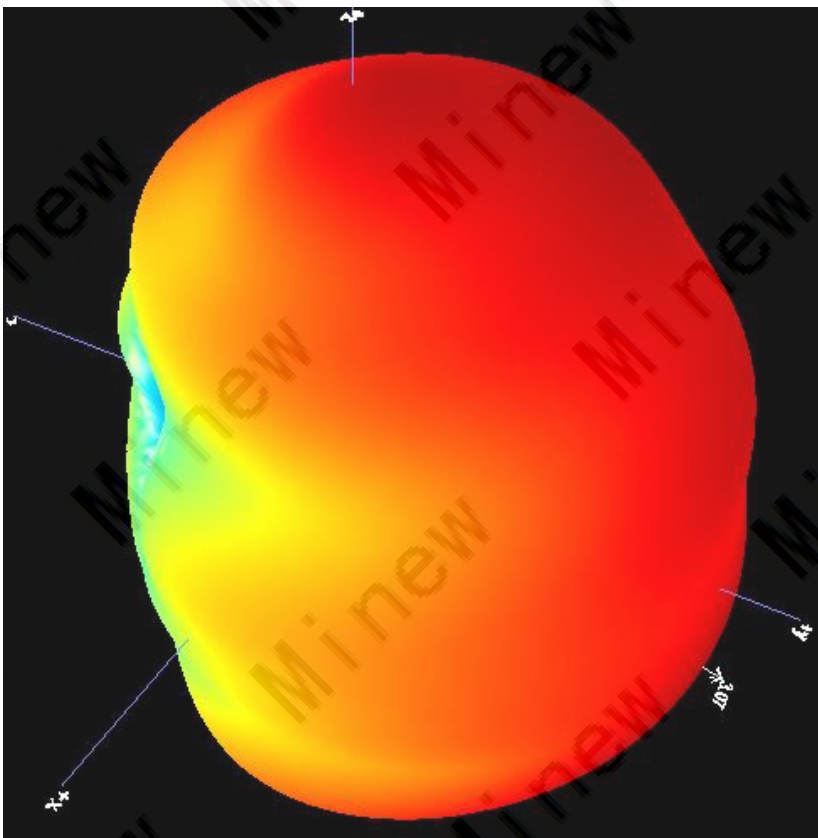


| EUT型号 备注 | 1#-MBT02 | | |
|-------------|------------|---------------|----------|
| Frequency | Gain (dBi) | Efficiency(%) | PeakGain |
| 2400MHz | 3.21 | 71% | 3.3838 |
| 2402MHz | 3.20 | 71% | |
| 2404MHz | 3.18 | 71% | |
| 2406MHz | 3.18 | 70% | |
| 2408MHz | 3.18 | 70% | |
| 2410MHz | 3.17 | 70% | |
| 2412MHz | 3.16 | 70% | |
| 2414MHz | 3.12 | 70% | |
| 2416MHz | 3.10 | 70% | |
| 2418MHz | 3.07 | 70% | |
| 2420MHz | 3.03 | 70% | |
| 2422MHz | 3.01 | 70% | |
| 2424MHz | 3.00 | 71% | |
| 2426MHz | 3.01 | 71% | |
| 2428MHz | 2.99 | 72% | |
| 2430MHz | 2.97 | 72% | |
| 2432MHz | 2.95 | 72% | |
| 2434MHz | 2.96 | 72% | |
| 2436MHz | 3.04 | 73% | |
| 2438MHz | 3.06 | 73% | |
| 2440MHz | 3.07 | 73% | |
| 2442MHz | 3.10 | 73% | |
| 2444MHz | 3.12 | 73% | |
| 2446MHz | 3.17 | 73% | |
| 2448MHz | 3.27 | 73% | |
| 2450MHz | 3.27 | 72% | |
| 2452MHz | 3.28 | 72% | |
| 2454MHz | 3.27 | 72% | |
| 2456MHz | 3.33 | 72% | |
| 2458MHz | 3.33 | 72% | |
| 2460MHz | 3.33 | 71% | |
| 2462MHz | 3.35 | 71% | |
| 2464MHz | 3.36 | 71% | |
| 2466MHz | 3.30 | 72% | |
| 2468MHz | 3.31 | 72% | |
| 2470MHz | 3.34 | 72% | |
| 2472MHz | 3.35 | 73% | |
| 2474MHz | 3.38 | 74% | |
| 2476MHz | 3.26 | 74% | |
| 2478MHz | 3.28 | 74% | |
| 2480MHz | 3.30 | 75% | |

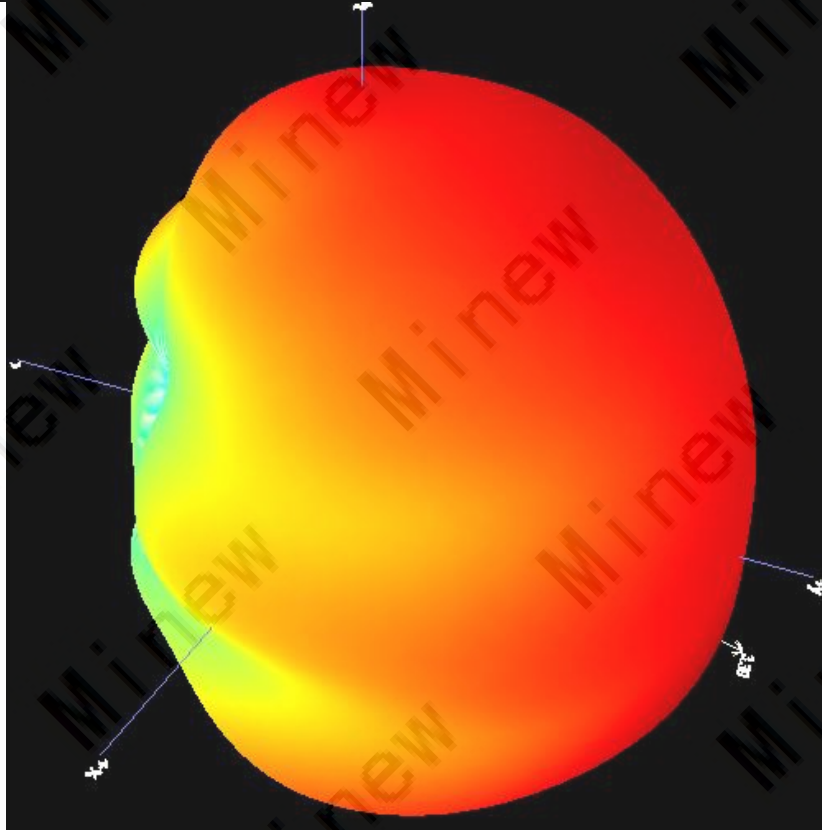
3.3 3D Polar Plot



2402MHz



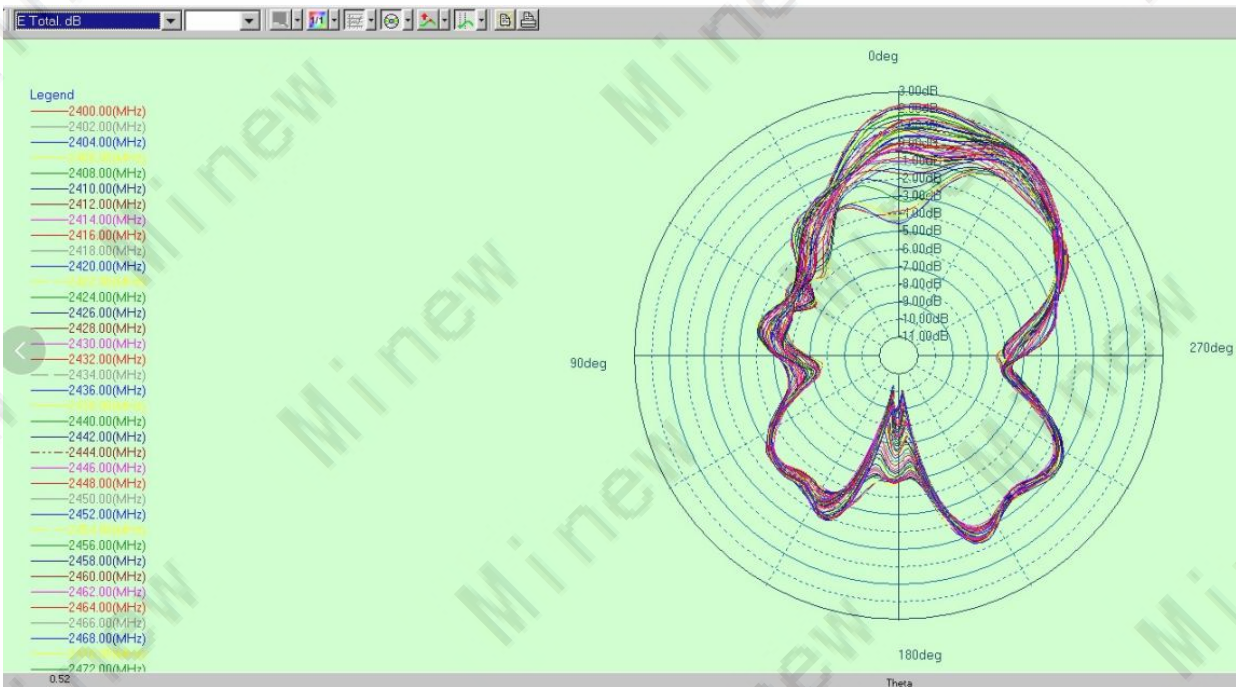
2440MHz



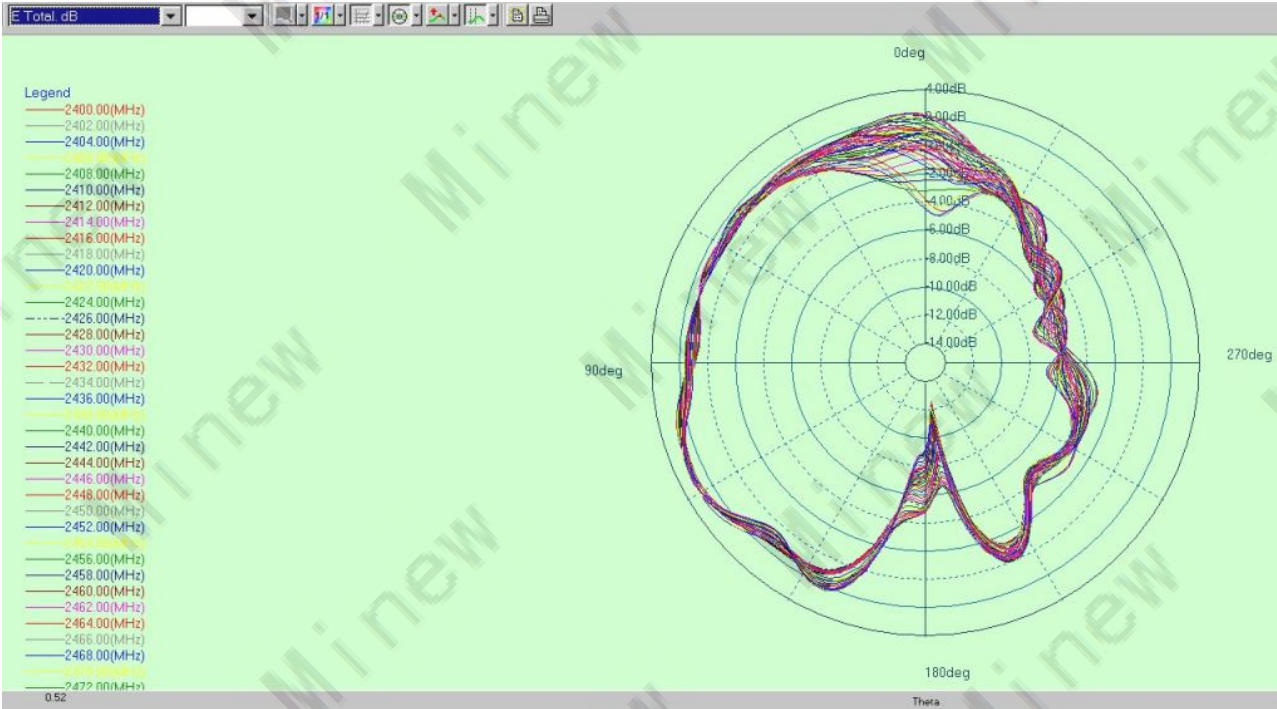
2480MHz

3.4 2D Radiation Pattern

(1) E1, XZ Plane, phi=0°



(2) E2, YZ Plane, phi=90°



(3) H , XY plane, theta=90°

