



DIGITAL EXCITER

ANYWAVE

UP
LEFT RIGHT
DOWN

OK
ESC

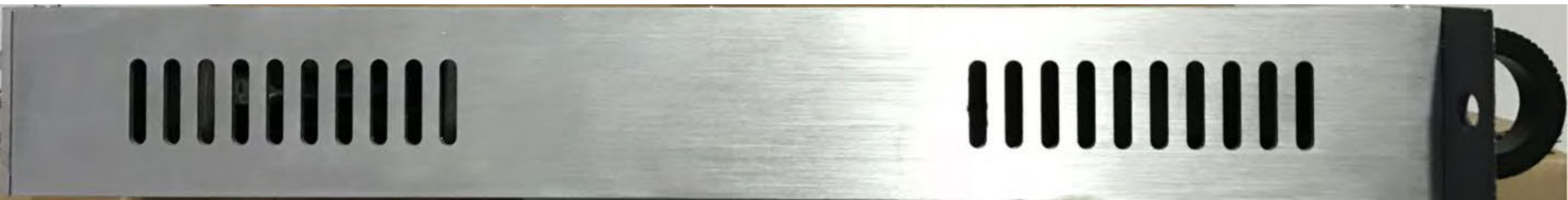
TS1 GPS
TS2 RFON
TSErr SysErr

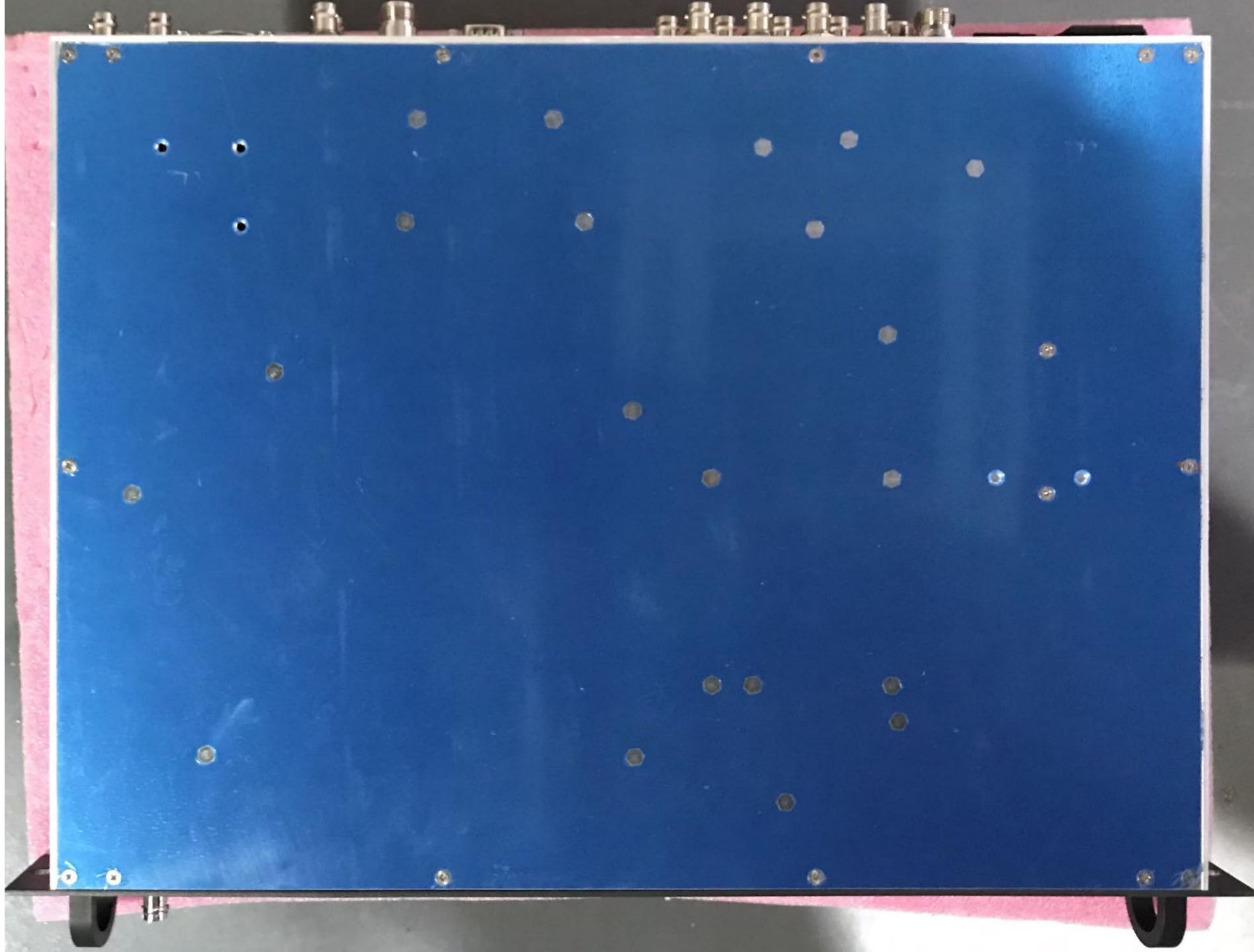
RF MON
FEEDBACK

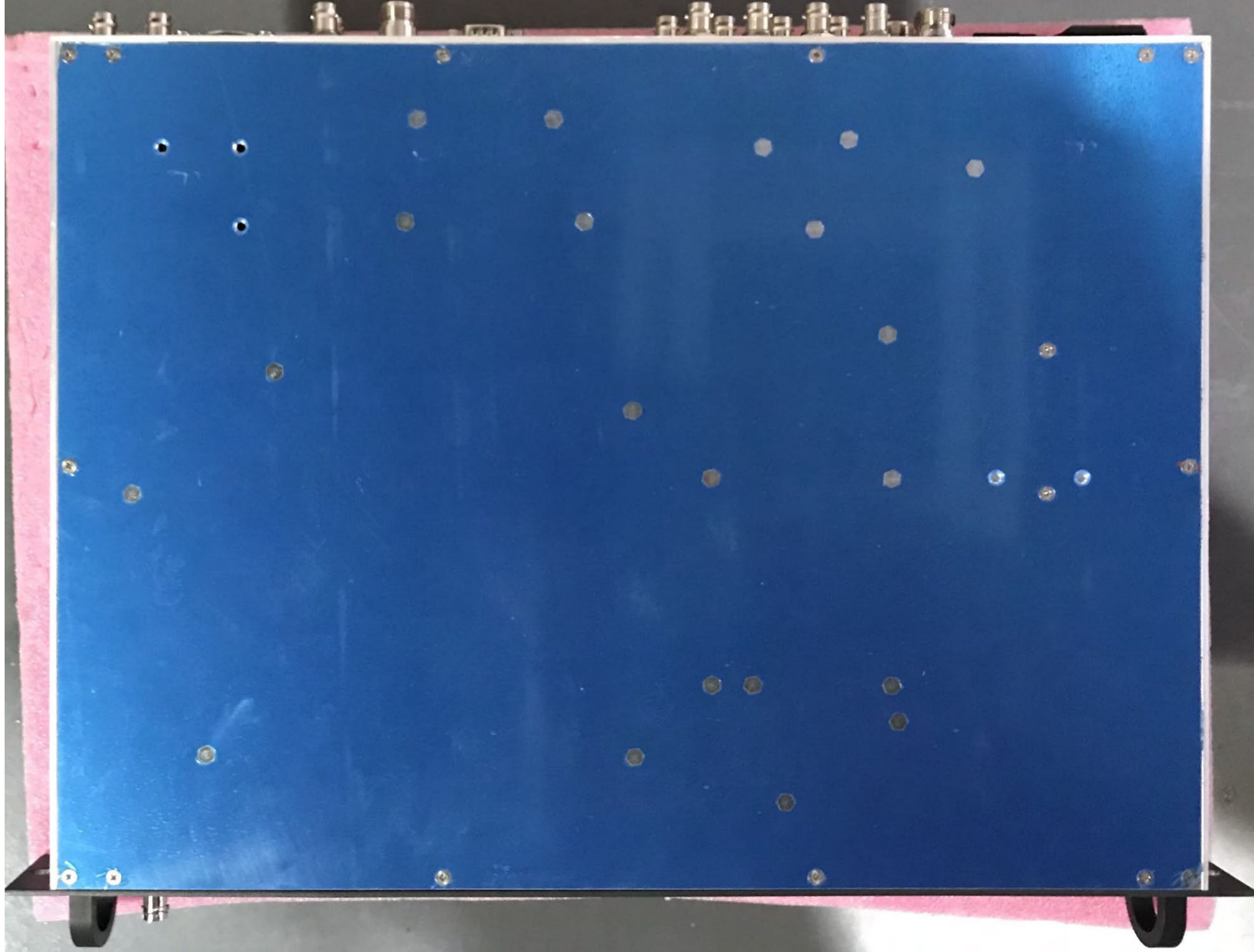




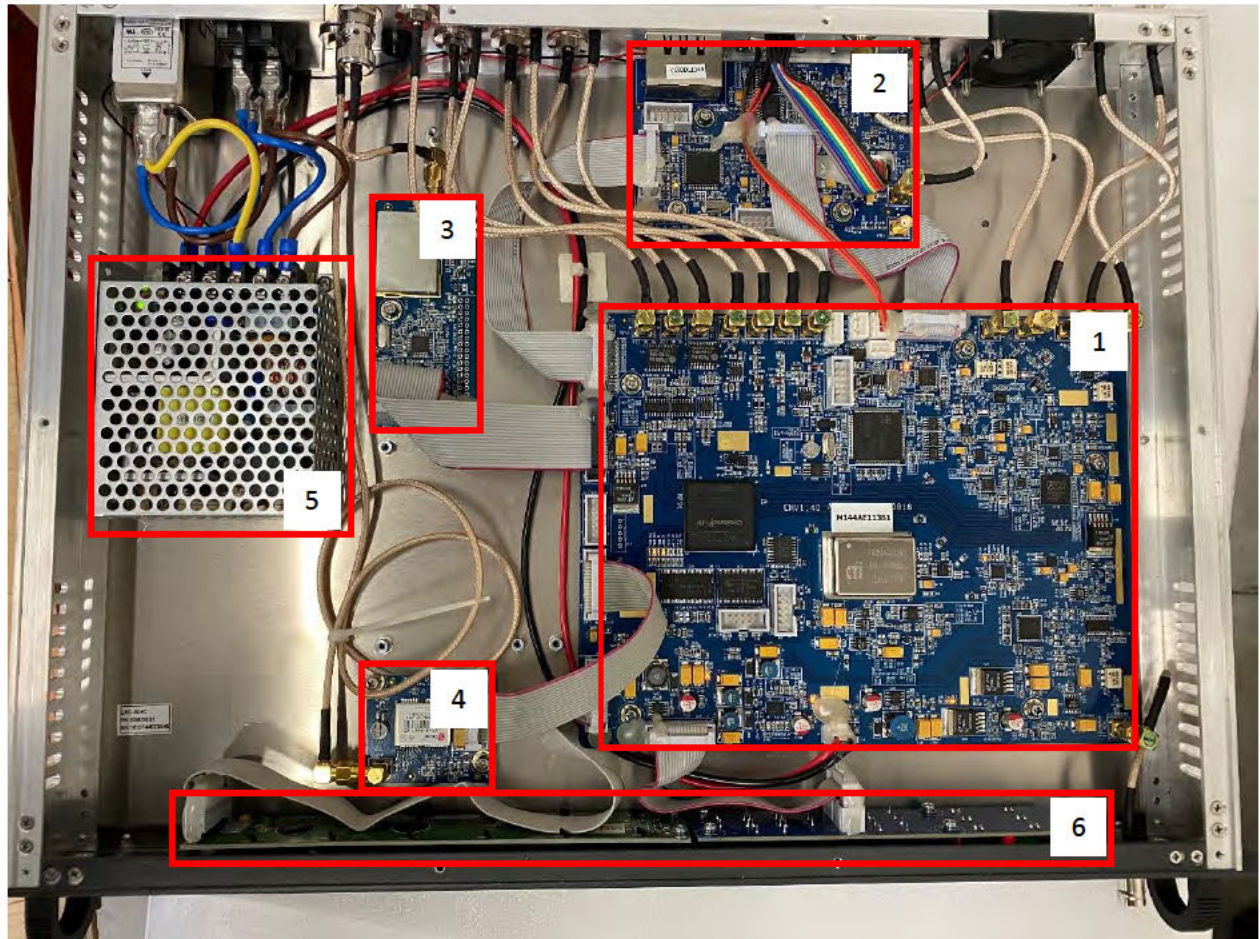
EXC-SX+C
PN: 100030.01
SN: 1812144041627







Exciter – Overview



1 – Main Board

2 – Communications Board (RJ-45, RS-232, GPIO, etc.)

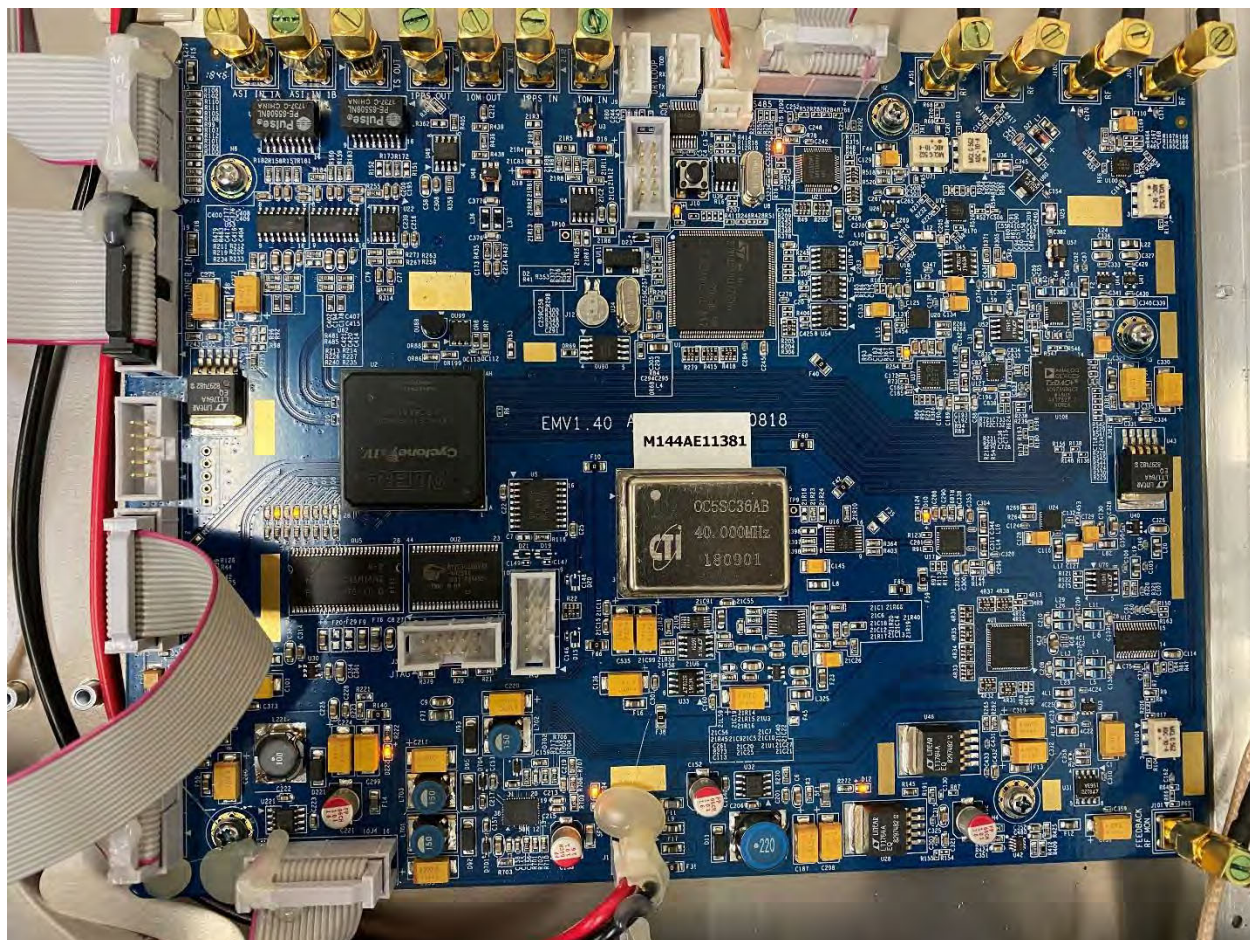
3 – Receiver Board

4 – GPS Board

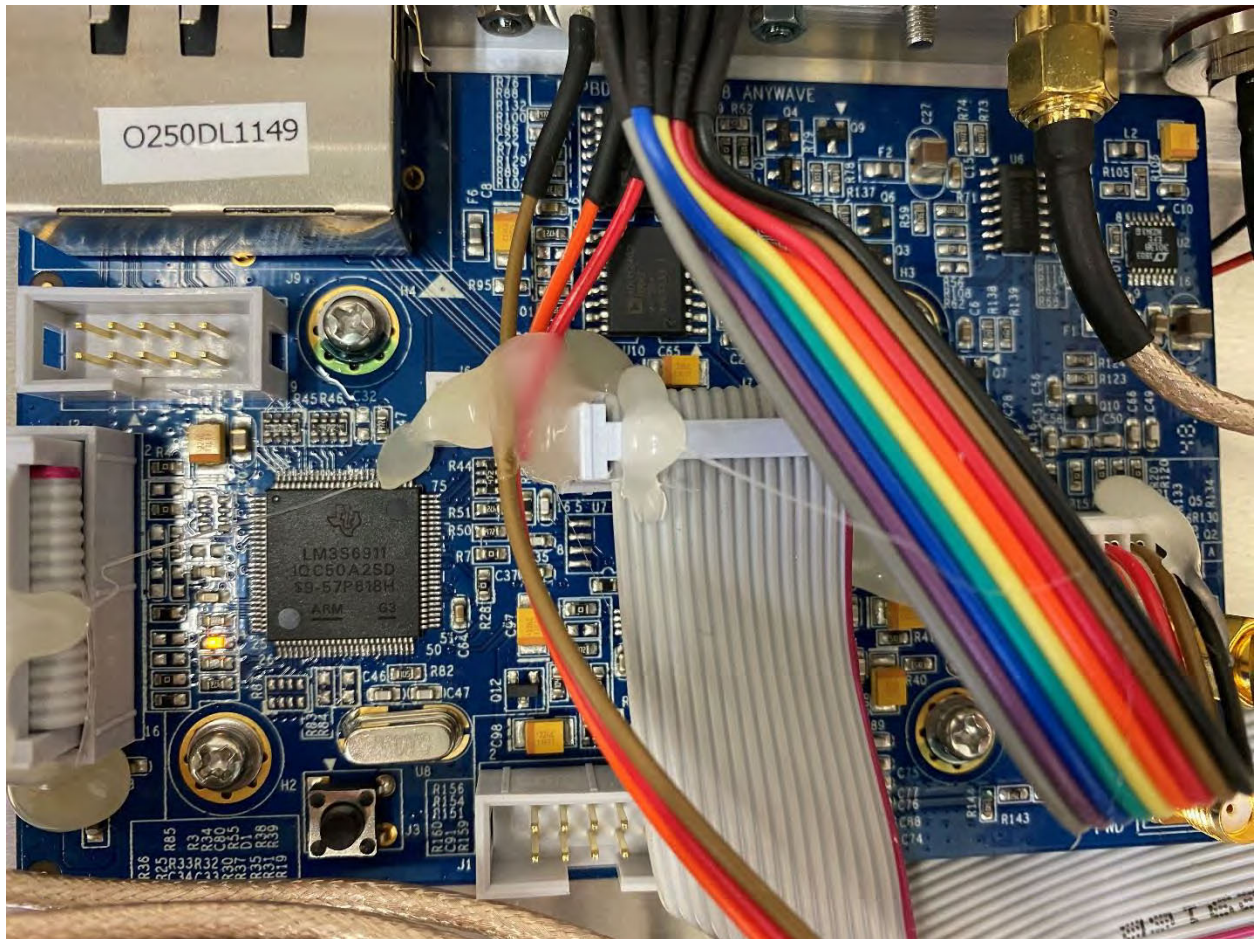
5 – Power Supply

6 – Front Panel Board

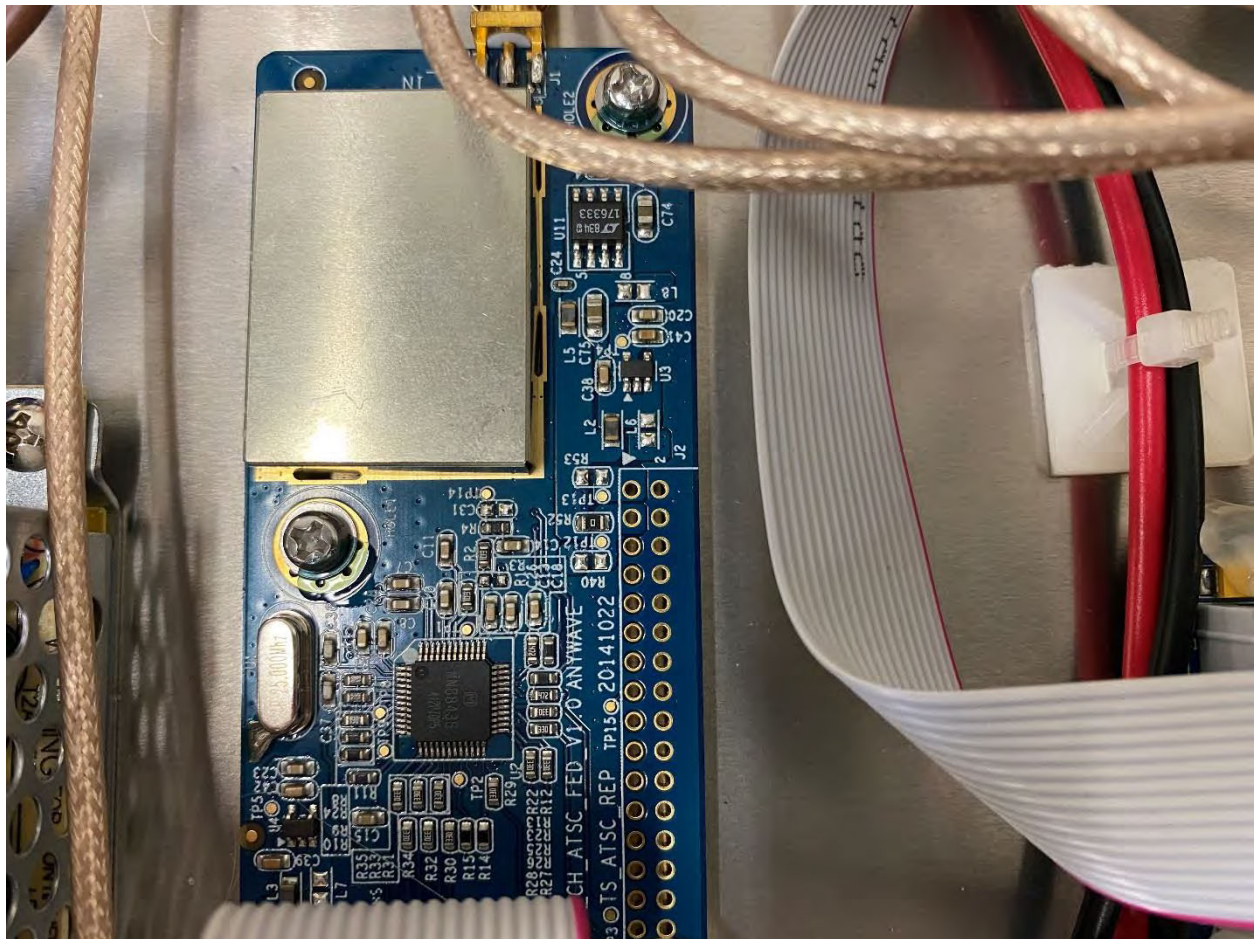
Exciter – Main Board



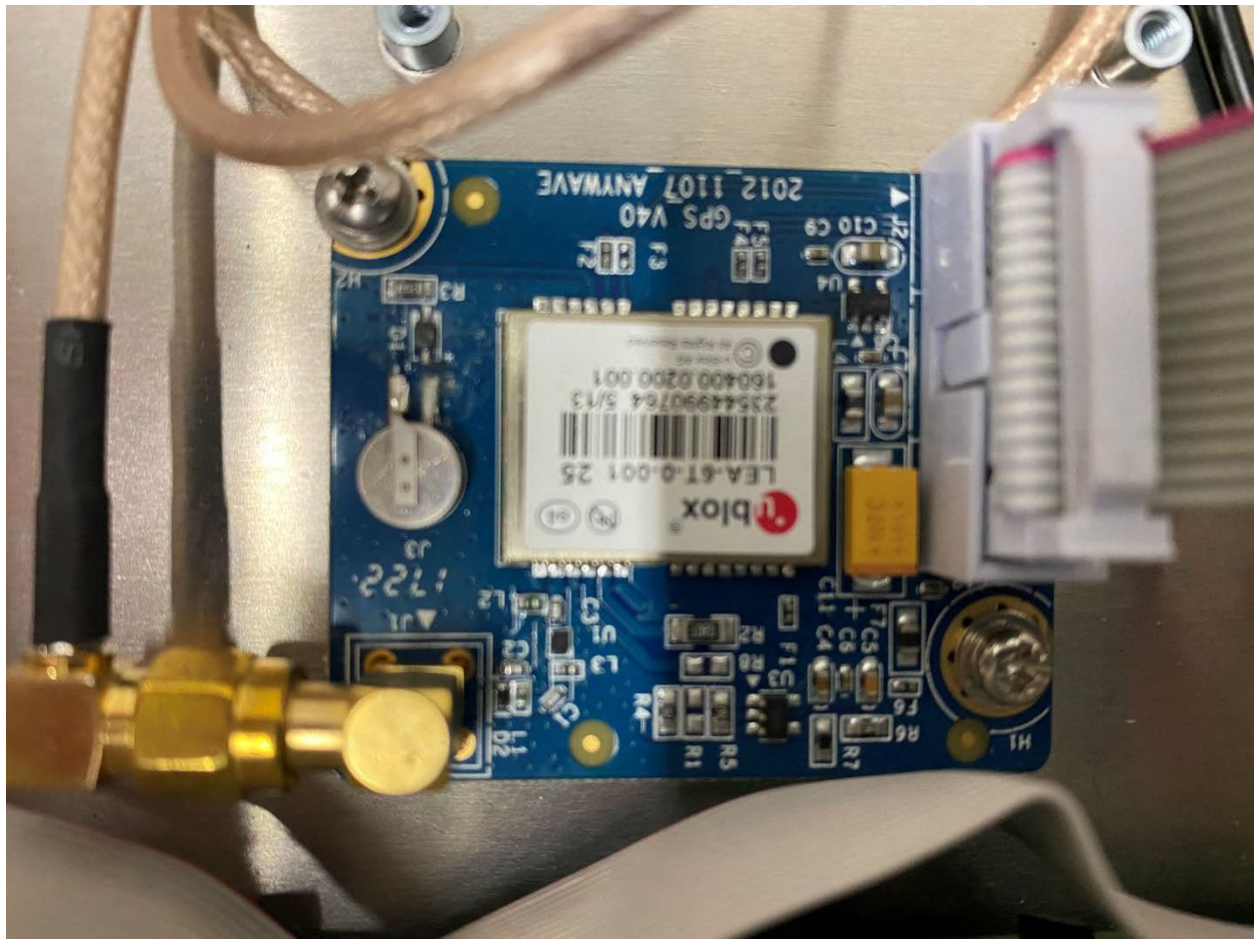
Exciter – Communications Board



Exciter –Receiver Board



Exciter – GPS Board





PA-8D-C-FA



LAN

- PWR
- RS485
- FWD
- ALARM
- RESET





RF OUT

RF MON

RF IN

REMOTE

AMP 10 1000W
PT. 1000W-01
REV. 1000 477204





