



A NOTOM PRODUCT

Step 1

Check if you have everything



Step 2

Prepare working environment

- Install trueMotion® Software
- Install USB driver driver
- Plug Receiver Module via USB cable



• Connect Antenna with Receiver Module

Step 3

• Turn on all Sensor Modules



Operating temperature:  
 Charging: 0-40°C  
 Discharging: -20°C-60°C

• Put Sensor Modules on Body Straps according to its number



Step 4

• Put Body Straps on



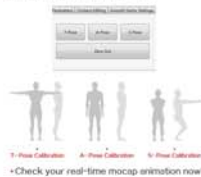
Step 5

- Startup trueMotion® Software
- Connect device
- Load nearest body size data



Step 6

• Perform a three-step calibration



• Check your real-time mocap animation now



**FCC Caution:** Any changes or modifications not expressly approved by the party responsible for compliance could void the user's authority to operate this equipment.

This device complies with Part 15 of the FCC Rules. Operation is subject to the following two conditions: (1) This device may not cause harmful interference, and (2) this device must accept any interference received, including interference that may cause undesired operation.

NOTE: This equipment has been tested and found to comply with the limits for a Class B digital device, pursuant to Part 15 of the FCC Rules.

These limits are designed to provide reasonable protection against harmful interference in a residential installation. This equipment generates, uses and can radiate radio frequency energy and, if not installed and used in accordance with the instructions, may cause harmful interference to radio communications.

However, there is no guarantee that interference will not occur in a particular installation.

If this equipment does cause harmful interference to radio or television reception, which can be determined by turning the equipment off and on, the user is encouraged to try to correct the interference by one or more of the following measures:

- Reorient or relocate the receiving antenna.
- Increase the separation between the equipment and receiver.
- Connect the equipment into an outlet on a circuit different from that to which the receiver is connected.
- Consult the dealer or an experienced radio/TV technician for help.