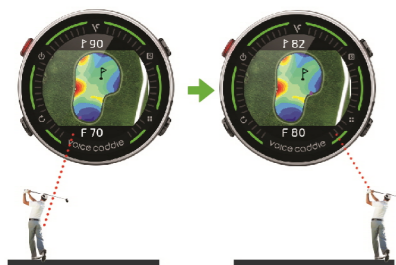


How to Use Smart Green View

The direction aimed at the green is automatically set according to the player's location.



* The image of Greenview golf course above can be different from the real one.

How to Download and Update the Mobile App

① 'Set up' the menu screen



② Choose 'Bluetooth'



③ Activate Bluetooth by tapping 'Connect'



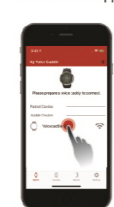
④ Check the unique serial of G1



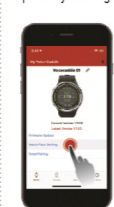
▶ Search My Voice Caddie in Play Store and install it.

How to Download and Update the Mobile App

Connect to 'My Voice Caddie' app



Execute 'Firmware Update' by touching it



Golf Course to Update with Latest Information by touch



Expected time for update: about 5 minutes

* Quick GPS, latest firmware, and latest route information are updated

* Supported versions : ios 11.0 or later Android 5.0 or later / Bluetooth 4.2 or later Some devices may not be supported.

How to Reset



Pressing both buttons Simultaneously will reset And restart.



The small hole on the side of the watch is **not** reset button.

Pressing with a pointed object can cause damage and is not designed to be pressed.

- Notes -

* The time required to capture GPS satellite signals while in golf mode may vary depending on the environment (weather, topography).

* The battery's usage time may be reduced during rounds in cold weather and in areas where satellite reception is poor. It is re-commended to turn power on once outside and ready to begin your round to increase product usage time.

* Do not leave the product in vehicles in hot temperatures or humid places as damage may occur.

* There is no other action when battery charging

- Warranty Conditions -

One Year Limited Warranty

Voice Caddie warrants this hardware product against defects in materials and workmanship for a period of one year from the date of original purchase. If a defect exists, at its option Voice Caddie will (1) repair the product at no charge, (2) exchange the product with a product that is new or like-new and is at least functionally equivalent to the original product, or (3) refund the purchase price of the product. Voice Caddie shall have no obligation to repair, replace or refund until the customer returns the defective product to Voice Caddie. This warranty does not apply : (1) to damage caused by accident, abuse, misuse, misapplication, or non-Voice Caddie products; (2) to damage caused by service performed by anyone who is not a Voice Caddie Authorized Service Provider; or (3) to a product or part that has been modified without the written permission of Voice Caddie. For more information on Voice Caddie's warranty and return policy, please visit www.Voicecaddie.com

- Caution -

This equipment has been tested and found to comply with the limits for a Class B digital device, pursuant to part 15 of the FCC Rules.

These limits are designed to provide reasonable protection against harmful interference in a residential installation. This equipment generates, uses and can radiate radio frequency energy and, if not installed and used in accordance with the instructions, may cause harmful interference to radio communications. However, there is no guarantee that interference will not occur in a particular installation. If this equipment does cause harmful interference to radio or television reception, which can be determined by turning the equipment off and on, the user is encouraged to try to correct the interference by one or more of the following measures:

- Caution -

- Reorient or relocate the receiving antenna.
- Increase the separation between the equipment and receiver.
- Connect the equipment into an outlet on a circuit different from that to which the receiver is connected.
- Consult the dealer or an experienced radio / TV technician for help.
- This device complies with part 15 of the FCC Rules. Operation is subject to the following two conditions: 1) This device may not cause harmful interference, and 2) This device must accept any interference received, including interference that may cause undesired operation.
- Any changes or modifications not expressly approved by the party responsible for compliance could void the user's authority to operate this equipment.
- The device has been evaluated to meet general RF exposure requirement.
- The device can be used in portable exposure condition with out restriction
- * Risk of explosion if battery is replaced by an incorrect type. Dispose of used batteries according to the instructions.

- Warranty Conditions -

| | | | |
|--------------------|--|-----------|--|
| Product | Voice Caddie Hybrid Golf Watch | | |
| Model | G1 | | |
| Serial Number | | | |
| Date of Purchase | | Full Name | |
| Purchase's Address | | Telephone | |
| Warranty Period | One year after the date of purchase (other components is 6 months) | | |
| Battery life | • Regular Watch Mode : 9-10 days • Golf Mode: 10 hours | | |

Responsible Party – U.S. Contact Information
 Street Address : 13951 Valley View Ave.
 City, State : La Mirada, CA
 Postal Code : 90638
 United States : United States
 Telephone number : 562-926-3978
 internet contact information : swoo@voicecaddie.com



G1

Golf Mode Quick Start Guide

For detailed information on the product, visit the website of Voice Caddie.

www.voicecaddie.com



How to Set-up Time

Automatic setting (only available outdoors)

Touch the Golf Mode on the menu screen



Automatic GPS reception When Golf Mode is selected

How to Set-up Time

Automatic setting (only available outdoors)

Touch the Set-up menu on the menu screen



③ Set-up time format

* Touch to select between 12 or 24 hours

④ How to set-up time

* Set time and minutes by swiping up or down on your screen.
 * Push up or down to set AM or PM.
 * Touch the bottom V when setting is completed.

⑤ How to set up daylight saving time (DST)

* Touch ON or OFF.

How to Set-up Time

Automatic setting (only available outdoors)

Touch the Set-up menu on the menu screen



① Touch Time on the screen

② Date Setting

• Swiping up or down to select year / date
 • Touch the bottom V when setting is completed.

Key Buttons

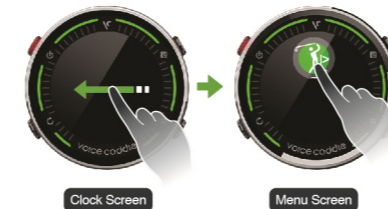
Power On/Off: Press and hold the POWER button for at least 3 seconds

▶ Full Touch Screen



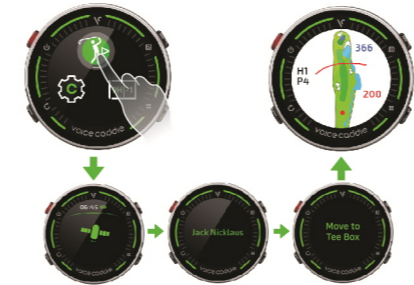
How to Move to Golf Mode

Enter the Menu Screen by swiping the clock screen to left ←, and on Menu Screen, touch the 'Golf Mode' icon.



Detect Golf Course & Hole

When the 'Golf Mode' icon is touched, GPS is updated to detect the hole automatically.



Guide to 'Course View, Green View, and Distance Guide' Screen

In 'Course View', swipe left (←) enter 'Green View'
 In 'Course View', swipe right (→) enter 'Distance Guide'



How to Use Course View (in enlarged view)

Course expanded view: long-press your desired spot on screen to get an enlarged view of the course.
 Long-press to return to previous screen



How to Use User IP

Check the attack target and the distance to the pin by touching



How to Use Pin Reload

If you touch the screen where your desired pin is located, and the pin location changes.



* The image of Greenview golf course above can be different from the real one.