

RF Exposure Exemption

Applicant : Health & Life Co. Ltd
Product Name : Blood Pressure Monitor
Trade Name : Health & Life
Model Number : HL868AX(BPA-H190BT), HL868AW/HL868AY
Applicable Standard : 47 CFR §2.1093
Received Date : Apr. 26, 2023
Issue Date : Jun. 06, 2023

Issued by

Approved By : _____

Eurofins E&E Wireless Taiwan Co., Ltd.
No. 140-1, Changan Street, Bade District,
Taoyuan City 334025, Taiwan (R.O.C.)
Tel : +886-3-2710188 / Fax : +886-3-2710190



Taiwan Accreditation Foundation accreditation number: 1330
Test Firm MRA designation number: TW0010

Note:

- 1.The test results are valid only for samples provided by customers and under the test conditions described in this report.
- 2.This report shall not be reproduced except in full, without the written approval of Eurofins E&E Wireless Taiwan Co., Ltd.
- 3.The relevant information is provided by customers in this test report. According to the correctness, appropriateness or completeness of the information provided by the customer, if there is any doubt or error in the information which affects the validity of the test results, the laboratory does not take the responsibility.

Revision History

Rev.	Issued Date	Revisions	Revised By
00	Jun. 06, 2023	Initial Issue	Rowan Hsieh

Contents

1.	Reference Applicable Standard	4
2.	Description of Equipment under Test (EUT)	5
3.	RF Exposure Limit	6
4.	Exemption Evaluation	7
5.	Maximum Tune-up Power	8
6.	Test Result	8
7.	Conclusion.....	8

1. Reference Applicable Standard

1.1 Reference Applicable Standard

Standard	Description	Version
47 CFR §2.1093	Radiofrequency radiation exposure evaluation: portable devices	-
IEEE C95.1	IEEE Standard for Safety Levels with Respect to Human Exposure to Electric, Magnetic, and Electromagnetic Fields, 0 Hz to 300 GHz	1992
KDB 447498 D04	RF exposure procedures and equipment authorization policies for mobile and portable devices	v01

1.2 Testing Location

Site Name: Site Name: Eurofins E&E Wireless Taiwan Co., Ltd.

Site Address: No. 140-1, Changan Street, Bade District, Taoyuan City 334025, Taiwan (R.O.C.)

Site Address: No. 2, Wuquan 5th Rd. Wugu Dist., New Taipei City, Taiwan (R.O.C.)

2. Description of Equipment under Test (EUT)

Applicant	Health & Life Co. Ltd 9F, No.186 Jian Yi Road, Zhonghe District, New Taipei City, Taiwan
Manufacturer	Health & Life Co. Ltd 9F, No.186 Jian Yi Road, Zhonghe District, New Taipei City, Taiwan
Product Name	Blood Pressure Monitor
Trade Name	Health & Life
Model Number	HL868AX(BPA-H190BT), HL868AW/HL868AY
FCC ID	2ABTAHNL86AX
Frequency Range	Bluetooth LE: 2402-2480 MHz
Supported Modulations	Bluetooth LE: GFSK
Product category	Portable

Note:

The above information of DUT was declared by manufacturer. Please refer to the specifications or user's manual for more detailed description.

Antenna Information			
Frequency Range (MHz)	Model Number	Type	Max. Gain (dBi)
2402 - 2480 MHz	LB-BLE-005(A8105 BQB BLE Module)	PCB Antenna	2.23

3. RF Exposure Limit

Table 1 Safety Limits for Controlled / Uncontrolled Environment Exposure

SAR Exposure Limit		
	General Population / Uncontrolled Exposure ¹ (W/kg)	Occupational / Controlled Exposure ² (W/kg)
Spatial Peak SAR ³ (head or Body)	1.60	8.00
Spatial Peak SAR ⁴ (Whole Body)	0.08	0.40
Spatial Peak SAR ⁵ (Hands / Feet / Ankle / Wrist)	4.00	20.00

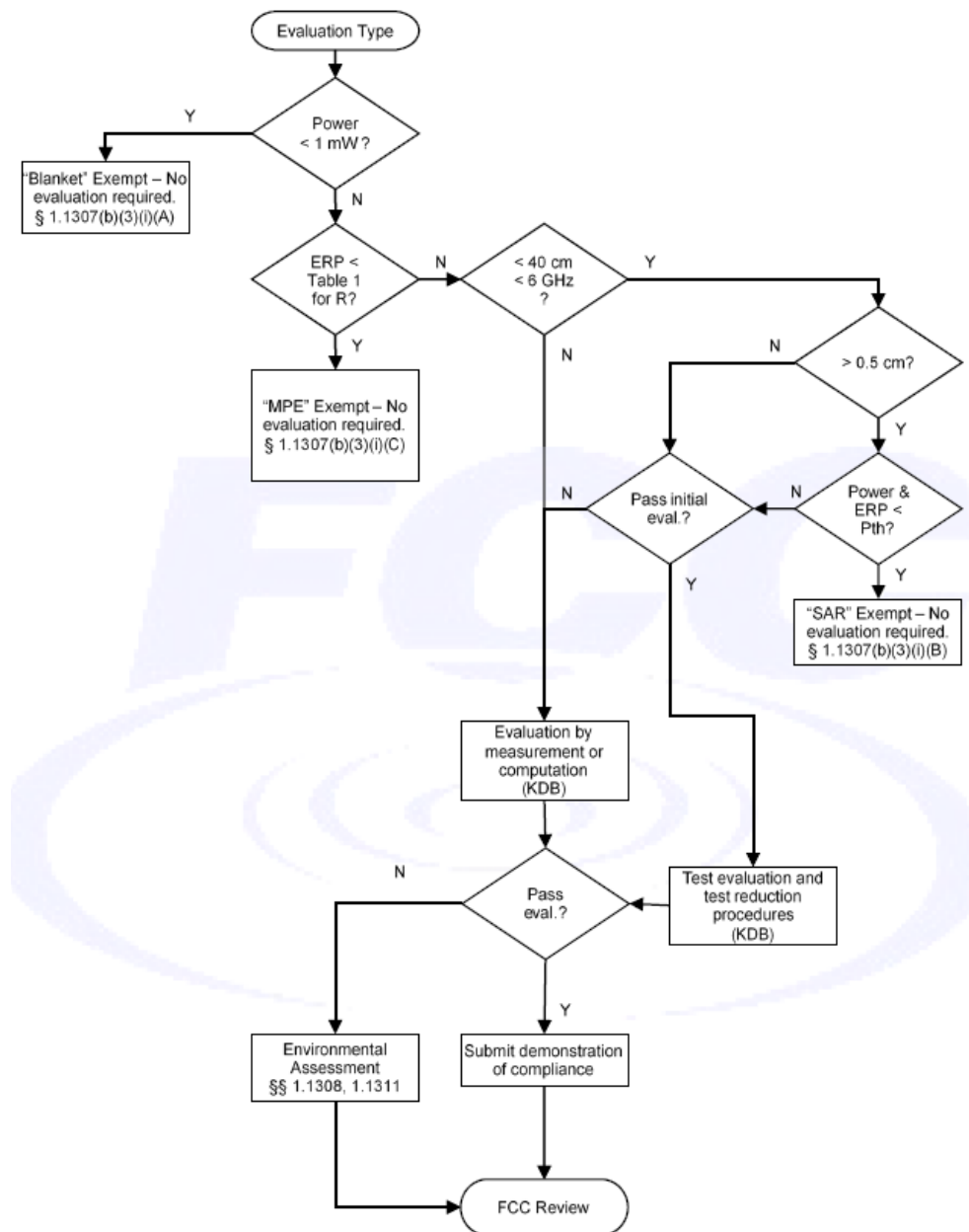
Notes :

1. General Population / Uncontrolled Environments are defined as locations where there is the exposure of individuals who have no knowledge or control of their exposure.
2. Occupational / Controlled Environments are defined as locations where there is exposure that may be incurred by persons who are aware of the potential for exposure, (i.e. as a result of employment or occupation).
3. The Spatial Peak value of the SAR averaged over any 1 gram of tissue (defined as a tissue volume in the shape of a cube) and over the appropriate averaging time.
4. The Spatial Average value of the SAR averaged over the whole body.
5. The Spatial Peak value of the SAR averaged over any 10 grams of tissue (defined as a tissue volume in the shape of a cube) and over the appropriate averaging time.

4. Exemption Evaluation

Exemption evaluation was performed according to the appendix A and B in KDB447498 D04.

The General Sequence for Determination of Procedure demonstrated in Figure A.1 of KDB447498 D04 was applied.



5. Maximum Tune-up Power

Technology / Mode	Frequency (MHz)	Maximum Conducted Power (dBm)
Bluetooth LE	2402 – 2480 MHz	0.17

6. Test Result

Band	Frequency (MHz)	Tune-up Power (dBm)	Tune-up Power (mW)	ANT Gain (dBi)	ERP (W)	<§1.1307(b)(3)(i)(B)> Exemption Minimum Distance (cm)	<§1.1307(b)(3)(i)(B)> Exemption Threshold ERP (W)	<§1.1307(b)(3)(i)(B)> Exemption considerations
Bluetooth LE	2402 - 2480	0.17	1.04	2.23	0.001	0.5	0.00272	Qualified

Note:

This device is qualified for exemption under § 1.1307(b)(3)(i)(B).

7. Conclusion

The result shows that this device is qualified for SAR-Based Exemption in KDB 447498. Therefore, SAR testing is not required.

---END---