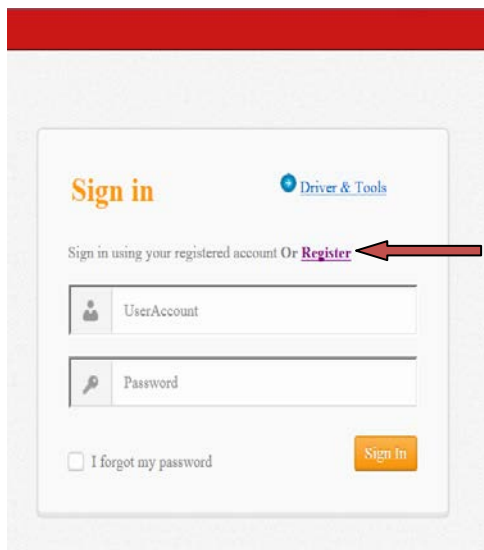


HL301 Data Transfer Device INSTRUCTION MANUAL

Uploading your data to Cloud Server

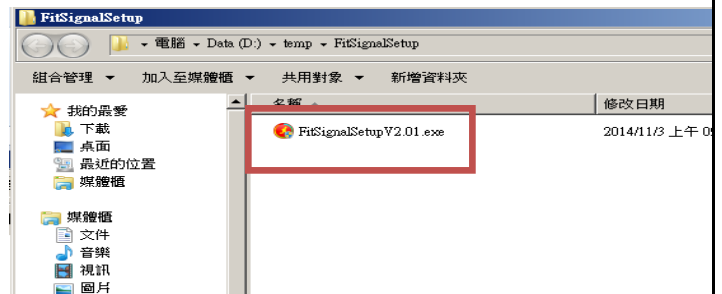
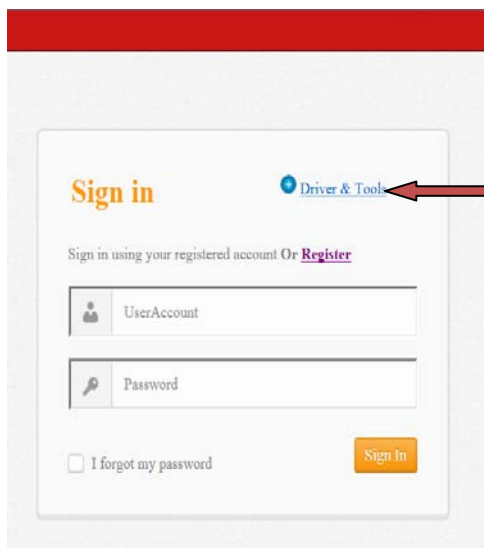
-After finish your sport training, follow the below instructions to upload your data to server for analyzing



Operating System:
Windows capacity
Recommended Internet
Browser:
IE 9 or above/ FIREFOX/
GOOGLE CHROME

Step A:

Please go to <http://www.fitsignal.com.tw>, click "Register", key in "Application" and click "sent".

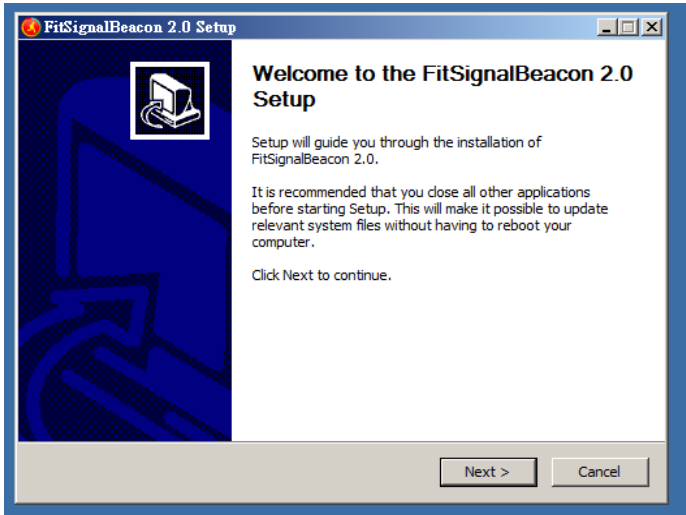


Step C:

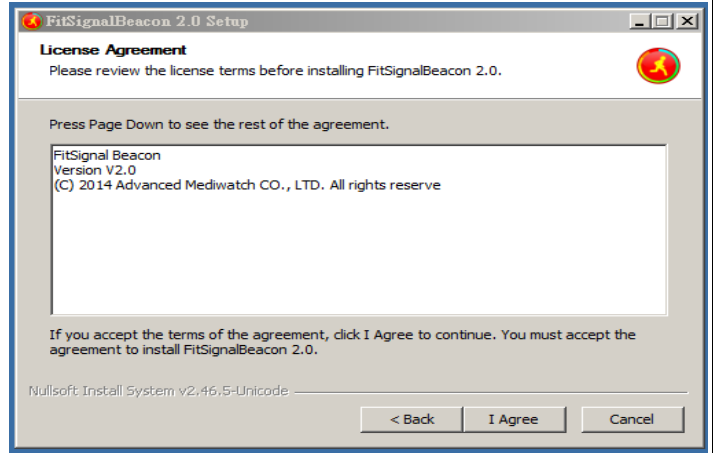
Unzip the file, execute and install the "FitSignalSetupVx.xx.exe"

Step B:

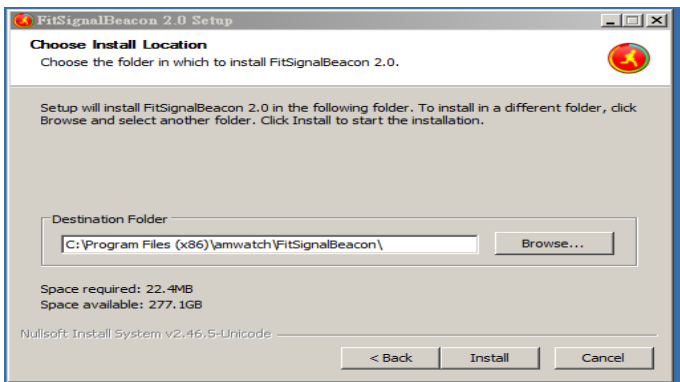
Back to the index page, click "Driver & Tools", downloading FitSignalSetup program.



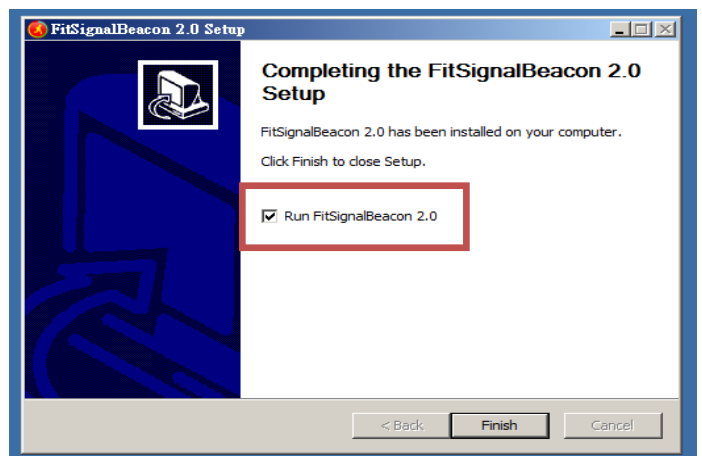
Step C-1:
Click "Next"



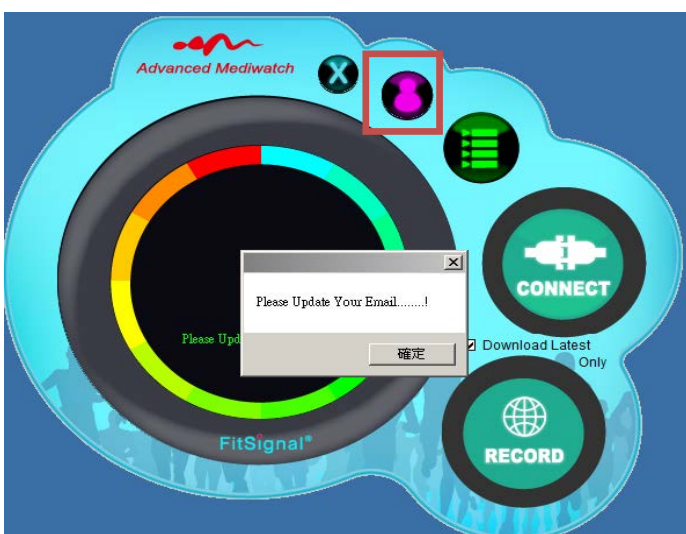
Step C-2:
Click "I Agree"




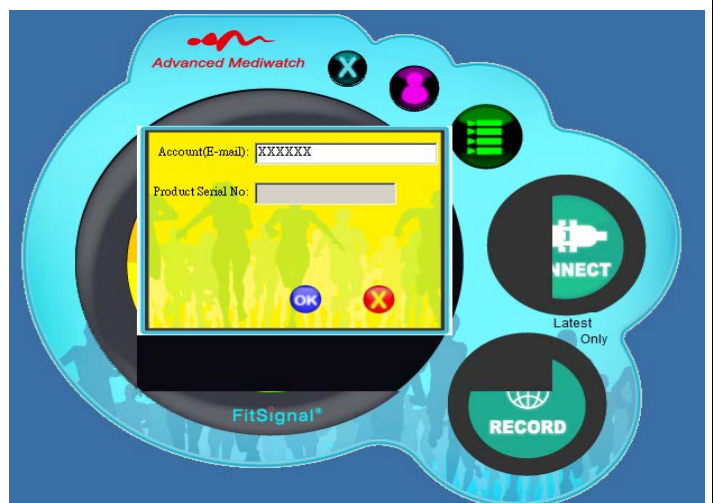
Step C-3:
Click "Install"



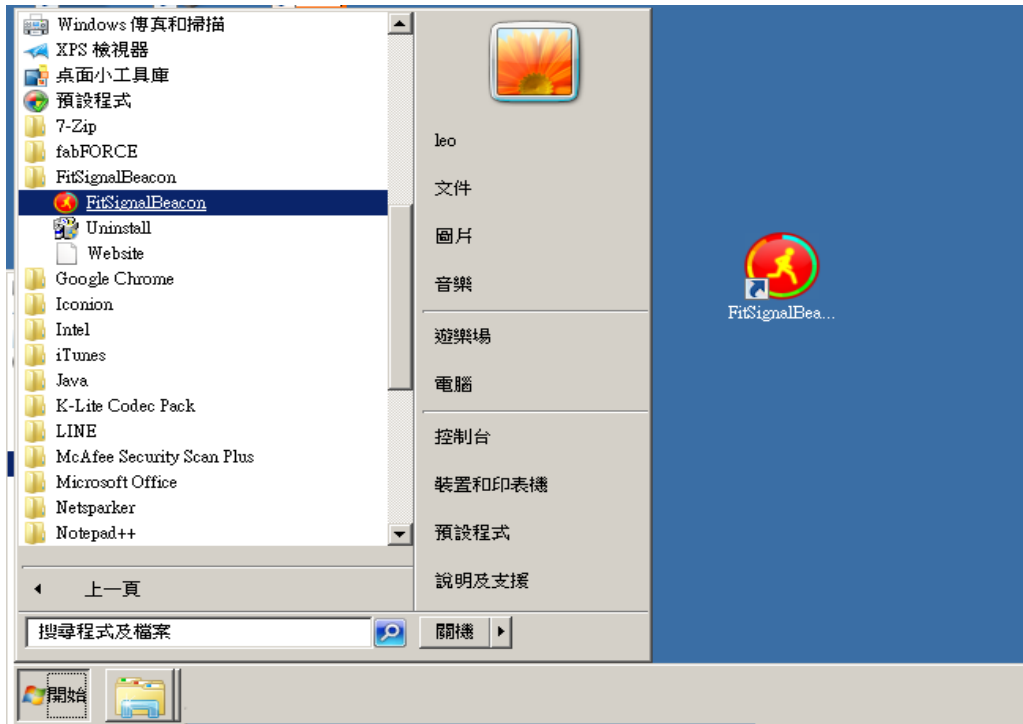
Step C-4:
Choose "Run FitSignalBeacon 2.0", and click "Finish" to complete installation.



Step C-5:
After installation, the window will jump out the above interface, click "Confirm" on Dialog Box, if not, click the "  icon.



Step C-6:
Fill in your Account (E-mail), click "OK" and finish.



Step C-7: From now on, the “Start Menu” and “Desktop” will have “FitSignalBeacon” shortcut to start the program.



Fitsignalbeacon

Step D:
Plug your data transfer device into your PC through USB port, and start “FitSignalBeacon” program

***Attention!**

- ★ Please keep your data transfer device in acceptable distance (≤ 3 meters) between your PC.
- ★ If you transmit large amounts of data, it may take you few minutes. You cannot taking any sport training during data transmission.
- ★ Please upload your workout data regularly to analyze your workouts.
- ★ Keep away from electronic or other electromagnetic source.
- ★ Do not use the Data Transfer Device in extremely low (less than $-10\text{ }^{\circ}\text{C}/14\text{ }^{\circ}\text{F}$) and high (more than $50\text{ }^{\circ}\text{C}/122\text{ }^{\circ}\text{F}$) environments.

Specifications

Model Number:	HL301
Dimensions:	50 X 20.5 X 10.6 mm (L x W x H)
Weight:	7.5g
Transmitting Range:	3M
Operation Environment:	$-10\text{ }^{\circ}\text{C} \sim 50\text{ }^{\circ}\text{C}$ ($14\text{ }^{\circ}\text{F} \sim 122\text{ }^{\circ}\text{F}$)
Radio Frequency:	2.4GHz, Dynastream ANT+ Sport
PC Interface:	Windows XP/ Windows 7

Administrative Regulations on Low Power Radio Waves Radiated Devices

This Data Transfer Device is in accordance with Administrative Regulations on Low Power Radio Waves Radiated Devices and qualified this regulation. User shall follow the telecommunication regulation to avoid penalty.

If user intends to carry this Data Transfer Device to other country, please follow the local regulations and restrictions.

According to Administrative Regulations on Low Power Radio Waves Radiated Devices regulations:

Article 12

Without permission granted by the DGT, any company, enterprise, or user is not allowed to change frequency, enhance transmitting power or alter original characteristic as well as performance to an approved low power radio-frequency devices.

Article 14

The low power radio-frequency devices shall not influence aircraft security and interfere legal communications; If found, the user shall cease operating immediately until no interference is achieved.

The said legal communications means radio communications is operated in compliance with the Telecommunications Act.

The low power radio-frequency devices must be susceptible with the interference from legal communications or ISM radio wave radiated devices.

FCC Declaration

■ Declaration of Conformity

Data Transfer Device declares that this product is in compliance with the Directive 1999/5/EC and other relevant requirements.

■ FEDERAL COMMUNICATIONS COMMISSION INTERFERENCE STATEMENT

This equipment has been tested and found to comply with the limits for a Class B digital device, pursuant to Part 15 of the FCC Rules. These limits are designed to provide reasonable protection against harmful interference in a residential installation.

This equipment generates, uses and can radiate radio frequency energy and, if not installed and used in accordance with the instructions, may cause harmful interference to radio communications. However, there is no guarantee that interference will not occur in a particular installation. If this equipment does cause harmful interference to radio or television reception, which can be determined by turning the equipment off and on, the user is encouraged to try to correct the interference by one or more of the following measures:

- Reorient or relocate the receiving antenna.
- Increase the separation between the equipment and the receiver.
- Connect the equipment into an outlet on a circuit different from that to which the receiver is connected.
- Consult the dealer or an experienced radio/TV technician for help.

CAUTION:

To assure continued FCC compliance:

- Any changes or modifications not expressly approved by the grantee of this device could void the user's authority to operate the equipment.

This device complies with Part 15 of the FCC Rules. Operation is subject to the following two conditions: (1) this device may not cause harmful interference, and (2) this device must accept any interference received, including interference that may cause undesired operation.