

BTunes for Bose QC25
User's manual



Content

■ Before use.....	1
1. Overview	1
2. Charging the BTunes.....	1
■ Getting started.....	2
3. Turning on/off the BTunes.....	2
4. Installation and wear.....	2
5. Pairing /Connecting.....	3
1)Pairing the BTunes with Bluetooth smart devices	3
2)Pairing with Bluetooth transmitter.....	4
3)Pairing the BTunes with multi-point devices.....	4
6. Battery display	5
7. Calling.....	5
8. Playing music.....	7
9. LED indicator.....	8
10. Factory reset.....	8
■ Care and maintenance.....	8
■ FAQs.....	9
■ Specifications.....	10

Thank you for choosing the BTunes for Bose QC25. Please read this user's manual carefully before use.

■ **Before use**

BTunes for Bose QC25 supports streaming CD quality music from your smart devices, and make phone calls too.

1. Overview



1	2.5mm audio input jack	5	MFB Button
2	Microphone	6	LED indicator
3	USB charging jack	7	Volume down
4	Volume up		

2.Charging the BTunes

- 1) Plug the USB charging cable into the charging jack of a PC or a charger.
- 2) Plug the end of USB charging cable into the USB port on the BTunes.

RED light on→Charging

RED light off→Finished charging

3)It will take about 1 hours to finish charging.



Warning:

The battery is recyclable.

Batteries (battery pack or batteries installed) shall not be exposed to excessive heat, such as sunshine, fire or the like.

■ **Getting started**

1.Turning on/off the BTunes

Function	Operation	LED indicator	Prompt tone
Turning on	Press and hold MFB button for 3 seconds	Blue LED on	Power on
Turning off	Press and hold MFB button for 5~6 seconds	Red LED on	Power off

Remarks:

- When powered on the headset will announce the battery status of the BTunes, "Battery high", "Battery medium", "Battery low" for the corresponding state.
- The BTunes will power off automatically to save power if not connected with devices within limited time.

2.Installation and wear.

Insert the audio plug of the BTunes into BOSE QC25 jack.



3. Pairing /Connecting

1) Pairing the BTunes with Bluetooth smart devices

Prior to using the BTunes for the first time, you have to pair it with a Bluetooth-enabled smart devices. The general pairing procedures are as follows:

- 1) Place the BTunes and Bluetooth smart devices where they are close by no more than 1 meter;
- 2) Press MFB button about 7s and release it till red LED and blue LED flash alternately, and voice prompt tone "Pairing".
- 3) On your smart devices, select "The BTunes 3" from Bluetooth list to pair/connect. After connected, the Blue LED flash twice every 4s and announce "Your device is connected".

Remarks:

- Pairing mode will last for 2 minutes, if not paired/connected the BTunes will switch to standby mode automatically.
- After successful pairing, the BTunes and smart devices will remember each other, they will not need to re-pair next time. Every time the BTunes is turned on, it will connect to the last connected devices automatically.
- Every time the BTunes is turned on, and if it doesn't connect to any devices, short press MFB button once, the BTunes will connect to the last

connected device.

- When the BTunes and the smart devices are out of effective range lead to disconnected, they can connect to each other automatically once going back to effective range; if not connected, short press MFB button will connect again.

2) Pairing with Bluetooth transmitter

You can connect the BTunes with a Bluetooth transmitter to enjoy music wirelessly. Hereby take a Bluetooth transmitter, not included in accessories, for example. The pairing procedures are as follows:

- 1) Keep the BTunes and transmitter within 1 meter ;
- 2) Make the BTunes enter pairing mode
- 3) Turn on the Bluetooth transmitter and make it enter pairing mode. It will search for Bluetooth devices automatically and send a pairing request. After successful pairing and connecting, blue LED of the BTunes flashes twice every 4 seconds.



Remarks:

- The pairing password of the BTunes is "0000". So, the BTunes can only pair with a Bluetooth transmitter whose pairing password is "0000".
- If pairing still fails after several tries, please refer to the Bluetooth transmitter's user's manual for further information.

3) Pairing the BTunes with multi-point devices

The BTunes can connect with two Bluetooth devices at the same time.

The general pairing procedures are as follows:

- 1) Pairing the BTunes with device one. Then turn the BTunes off.
- 2) Turn on the BTunes and make it enter in pairing mode again, and pair with device two. Then turn the BTunes off.
- 3) Turn on the BTunes, it will automatically connect with those two devices if they are on and within 33 ft.

Remark:

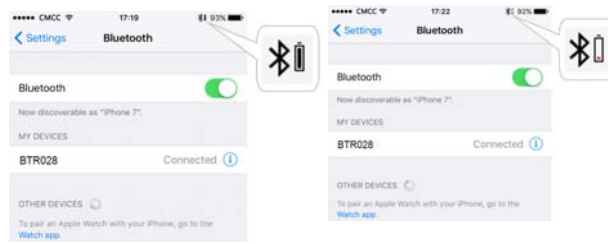
- 1) Turn on multi-point: Standby mode or pairing mode, press MFB button and volume up button simultaneously, hear prompt "Enable multipoint";

2) Turn off multi-point: Standby mode or pairing mode, press MFB button and volume down button simultaneously, hear prompt "Disable multipoint".

3) To keep good usage experience, it is better turn off multi-point function if only connect with one device.

4. Battery display

When the BTunes connected with iOS devices or some Android devices, it will display the battery of the BTunes on the device. When the BTunes is in low battery, the power symbol show red.



5. Calling

1) Basic operation

Functions	Status of headset	Operation	Prompt tone
Cancel a call	Calling	Short press MFB button once	call terminated

Answer a call	Ringling	Short press MFB button once	Answer
Reject a call	Ringling	Press MFB about 2 seconds	Reject
End a call	During a call	Short press MFB button once	Call terminated
Volume up	During a call	Press volume up button	No prompt tone
Volume down	During a call	Press volume down button	No prompt tone
Transfer conversation to smart devices	During a call	Press MFB about 2 seconds	Transfer audio
Transfer conversation to headset	During a call	Press MFB about 2 seconds	Transfer audio
Microphone mute	During a call	Double click MFB button	Mute on

Cancel mute	During a call (microphone mute)	Double click MFB button	Mute off
-------------	---------------------------------	-------------------------	----------

2)

Note:

- You will hear two “beep” tone every 10s when the BTunes is on mute off.
- When pressing the answer button on some smart devices, the call will be transferred to the smart devices. You can switch the call to the BTunes through transfer conversation or operating on the smart devices. Please refer to your smart devices user manual for further information.

2) Three-ways call operation

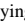
Functions	Status of headsets	Operation
Answer new call and end current call	There are second incoming call	Short press MFB once
Answer new call and retain current call	There are second incoming call	Double click MFB button
Switch calls	Keep conversation	Double click MFB button
End current call and switch retain call	Keep conversation	Short press MFB once

3) Connect with two smart devices

Functions	Status of headset	Operation
End phone call #1 and answer phone call #2	During phone call #1, phone 2 has incoming call	Short press MFB once
Retain phone call #1 and answer phone call #2	During phone call #1, phone 2 has incoming call	Double click MFB button
Switch call	During call, one of phone call is retained	Double click MFB button
End current call, back to retain phone call	During call, one of phone call is retained	Short press MFB once

6. Playing music

Functions	Status of the headset	Operation
Volume up	Playing music	Press + button
Volume down	Playing music	Press - button
Last song	Playing music	Long press + button about 2 seconds

Next song	Playing music	Long press  button about 2 seconds
Pause	Playing music	Short press MFB once
play	Pausing	Short press MFB once

7.

Notes:

- When the BTunes is connected with two Bluetooth devices, the BTunes can only play music from one device and need pause current music and play music from the other device.
- If you want to remote control last/next song, pause/play, it needs your Bluetooth smart devices or Bluetooth transmitter paired with the headset to support AVRCP profile, please refer to the user's manual of your smart devices or Bluetooth transmitter for further information.

7. LED indicator

LED indicator	Status of the BTunes
Red and blue LED flashes alternately	Pairing mode
Blue LED flashes once every 2 seconds	Not connected with device
Blue LED flashes twice every 4 seconds	Connected
Red LED flashes instead of blue LED	Low battery

8. Factory Reset

When in charging, long press MFB button and **+** button about 5 seconds and release it until the red and blue LED flashes simultaneously.

Remarks:

After factory reset, the paired list of the BTunes will be deleted. After turning it on again, the BTunes will enter pairing mode automatically, and you need to re-pair and connect with Bluetooth devices on which you need to remove or "forget" previous entries of "the BTunes 3".

■ Care and maintenance

Read the following recommendations carefully before using the BTunes. Following these you will be able to enjoy this product for many years.

- Keep it dry and don't put it in the damp place to avoid the product's internal circuit being affected.
- Keep the product away from direct sunlight or hot places. High temperatures will shorten the life of electronic devices, destroy the battery or distort certain plastic part.
- Don't expose the product to cold areas. It may damage the internal circuit board.
- Don't try to disassemble the product as it may get damaged if you are not professional.
- Don't let it fall down onto the floor or other hard surfaces. The internal circuit might get damaged.
- Don't use intensive chemical products or detergent to clean the product.
- Don't scratch the surface with sharp things. It may get damaged by sweat.
- Please don't attempt to take out the battery from the BTunes, as this might damage it.
- Improper uses may invalidate manufacturer's warranty.

■ FAQs

1.What does it mean when red LED flashes instead of blue LED?

Battery is low, it's time to charge the battery.

2. Why is the red LED off when charging?

- a) Please make sure the charging device connect with the BTunes correctly;
- b) The battery may be drained fully. Please charge the battery for 30 minutes, and then the red LED will be ON.

3. Why can't hear the sound ?

- a) Make sure the volume is not too low or muted;
- b) Make sure the BTunes connects with the smart devices correctly;
- c) Make sure the distance between the BTunes and the smart devices is in 33 ft or 10 meters of the Bluetooth range.

4. Why can't hear the sound clearly ?

- a) Make sure the smart devices is in the strong signal area;
- b) Make sure the distance between the BTunes and the smart devices is in the available Bluetooth range.

5. Why the pause/play, last/next song not function when playing music?

Make sure your Bluetooth device supports AVRCP (Audio/Video Remote Control profile)

■ **Specifications**

Bluetooth version	Bluetooth V4.2
Bluetooth profiles	HFP,HSP, A2DP and AVRCP
Operating distance	10 meters
Music time (moderate volume)	Up to 10 hours
Talk time	UP to 10 hours
Standby time	About 200 hours

Charging time	About 1.5 hours
Charging input	DC 5.0V /500mA
Weight	About 11 g
Measure	75*46*13.5mm

NOTE: This equipment has been tested and found to comply with the limits for a Class B digital device, pursuant to part 15 of the FCC Rules. These limits are designed to provide reasonable protection against harmful interference in a residential installation. This equipment generates uses and can radiate radio frequency energy and, if not installed and used in accordance with the instructions, may cause harmful interference to radio communications. However, there is no guarantee that interference will not occur in a particular installation. If this equipment does cause harmful interference to radio or television reception, which can be determined by turning the equipment off and on, the user is encouraged to try to correct the interference by one or more of the following measures:

- Reorient or relocate the receiving antenna.
- Increase the separation between the equipment and receiver.
- Connect the equipment into an outlet on a circuit different from that to which the receiver is connected.
- Consult the dealer or an experienced radio/TV technician for help

Changes or modifications not expressly approved by the party responsible for compliance could void the user's authority to operate the equipment. This device complies with Part 15 of the FCC Rules. Operation is subject to the following two conditions:

- (1) this device may not cause harmful interference, and
- (2) this device must accept any interference received, including interference that may cause undesired operation.