



The **electronic monitor** that prevents **accidentally leaving** your **baby in the car!**

## Easy to Install

**No Pairing Required!**

You can use multiple seats in multiple vehicles. Any vehicle with an SOS Receiver will work with any SOS Chest Clip.

### Universal\* Plug•n•Play Receiver

Installs in  
60 Seconds!

### Intelligent Chest Clip

Works with ALL  
Infant Car  
Seats!



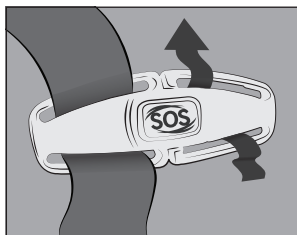
\*Receiver works with any 2008 or newer gas, diesel, hybrid, or Stop/Start equipped vehicle purchased in the U.S. or Canada. 2007 and older vehicles see website.

# Peace-of-mind protection for our busy world!

A baby accidentally left in a car may seem unthinkable. But accidents do happen. Constant distractions, interruptions and hectic schedules can overwhelm even the most attentive parent. SOS helps ensure that it never happens to your baby!

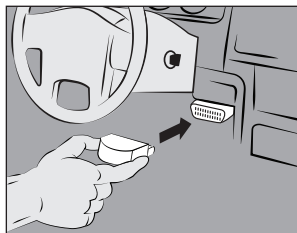
Simply secure your child into the car seat as you would normally. The SOS Receiver monitors both the Chest Clip transmitter and the vehicle. When you arrive at your destination and turn your vehicle off, the SOS system sounds a series of gentle tones reminding you of your baby.

## Install it once and SOS is always ready to protect your child.



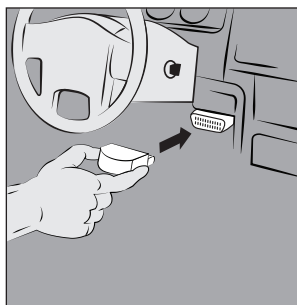
### Installing the SOS Chest Clip Transmitter:

1. Remove the original chest clip following the car seat manufacturer's instructions.
2. Re-string the SOS Chest Clip as shown, taking care to ensure the SOS logo is facing you.
3. Secure the straps into the back of the car seat following the manufacturer's instructions.



### Installing the SOS Receiver in Gas or Diesel Vehicles:

1. Plug the SOS Receiver into the 16 PIN OBD connector located under the driver's dash.
2. Start the vehicle—you will hear one long beep.
3. Let your vehicle idle in "PARK" for 60 seconds.
4. After 60 seconds you will hear three beeps indicating the SOS Receiver is correctly installed in your gas or diesel vehicle.



### Installing the SOS Receiver in Hybrid Vehicles or Stop/Start Equipped Vehicles:

1. Plug the SOS Receiver into the 16 PIN OBD connector located under the driver's dash.
2. Start the vehicle—you will hear one long beep.
3. Begin driving your vehicle at a speed above 5 mph in the first 60 seconds.
4. Once speed exceeds 5 mph, you will hear five beeps indicating the SOS Receiver is correctly installed in your hybrid or Stop/Start vehicle.

**Missed a step? No problem.** Simply turn off the vehicle, unplug the Receiver, and wait 10 seconds. Then plug the Receiver back in and start the process over following the instructions above.

**Important:** You will need to repeat the installation process above if:

- a) Your vehicle's battery dies, is replaced, or is disconnected.
- b) You move the Receiver to a different vehicle.
- c) The Receiver is removed during servicing of the vehicle.

**Questions? Comments?** Visit us at [www.SmallOnesSafety.com](http://www.SmallOnesSafety.com)

This device is FCC and IC certified. See package insert for details.

© 2014 Seibert Williams Glass, LLC    **Made in USA • Patent Pending**

**SOS** smallonessafety

