

Special notices:

1. Please say voice command after you hear the indication voice;
2. When long press the screen, the apk will pop-up The gesture operation dialog box to show the operation method ;
3. When using this product requires Internet network, Some part of the function will not be able to use when there is no internet network ;
4. This product does not support dual card mobile phone and tablet ;



"IvCar " product manual



Bluehand

1.1 the product appearance



With the bluehand, you can conveniently make and answer calls hands-free and listen to music from your compatible

device. You can also initiate a voice assistant from your smart phone (Siri for Apple, other voice assistant for Android), which allows the user control the smart phone by natural voice.

The bluehand can be paired with Bluetooth devices and connected to a compatible mobile phone and music player at the same time. The bluehand can be connected to the audio system by FM Radio or an AUX cable. The bluehand supports a USB interface which allows the user to charge the smart phone or other devices.

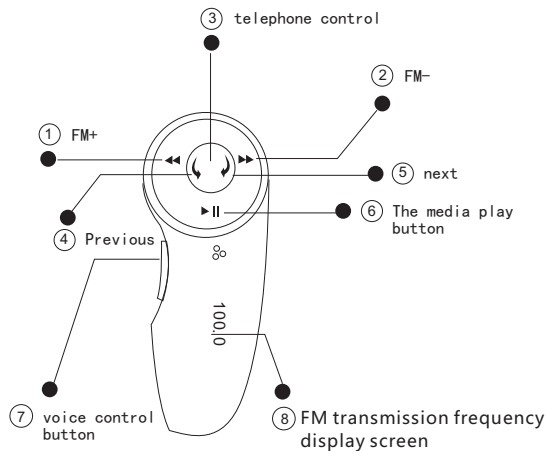


1.2 The bluehand puts



Insert the bluehand to the car cigarette lighter.

1.3 control buttons



The call control button: Telephone/hang up

Music control button: Play/pause the music

FM control + / - : FM transmission frequency increase/decrease.

Track control: music Previous/Next

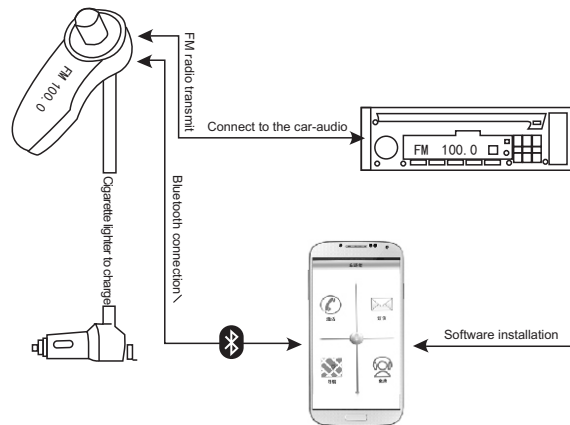
Voice control button: Start the voice control/answer or reject

FM transmission frequency display: Display the current FM transmission frequency

quality audio output: connect the headset or car stereo AUX input

Notice: Press and hold "FM +" and "FM -" two seconds to start automatically searches for FM transmit frequency

1.4 connection



- 1、 Insert the bluehand to the car cigarette lighter.
- 2、 For the first time using, Long press the call control button until the lights flashing rapidly the set the bluehand to the pairing mode
- 3、 Enter the mobile phone Bluetooth Settings, open the Bluetooth functions, and then search the Bluetooth devices, and find YWT - Bluehand, Click to connection . When connection successful the Led of bluehand will turn on. And the bluehand will auto reconnection in the next time use
- 4、 Press the FM+ and FM- and hold until the Screen began to scan, and waiting for 30 second the screen number is stable.
- 5、 Turn the FM receiver radio frequency to the same as the screen displayed.

notices: when there is more noise on the car-audio you can redo the 4 & 5 item or adjust the Radio frequency to a blank channel and tuning the Bluehand FM to the same as car-audio, if there is some pop noise on car-audio, please turndown the phone volume

software instructions

2.1 The main interface

Main functions include: calls, text messages, navigation, music, weather and agents, driving, and man-machine chat, etc.

The main interface is as follows:



2.2 call

Call operation as follows:



2.3 text messages

Short messages interface as follows:



Receiving short messages interface as follows:



2.4 navigation

导航操作界面如下图：



2.5 music

Enter to music interface, this interface divided into two parts functions, the local music and online music

The diagram as below:



Enter to music interface, through gestures to delimit screen operation, such as adjust the volume and switch songs(long press the screen will pop up gestures message), please show picture as below:



2.6 driving

Enter the traffic management interface, please show the picture below:



Refueling and maintenance information such as maintenance can be performed at the same time, it is also provide driving record function.

2.7 weather

The interface is as below:



2.8 Agent

At operating below:



Main screen click at the user can choose 1 or 2, a key or a key navigation operation





- Intelligent communication
- Voice navigation
- Artificial reclined at the table
- Chang to listen to all the way
- ntelligent secretary

FCC ID :

This device complies with Part 15 of the FCC Rules. Operation is subject to the following two conditions: (1) this device may not cause harmful interference, and (2) this device must accept any interference received, including interference that may cause undesired operation.

changes or modifications not expressly approved by the party responsible for compliance could void the user's authority to operate the equipment. NOTE: This equipment has been tested and found to comply with the limits for a Class B digital device, pursuant to Part 15 of the FCC Rules. These limits are designed to provide reasonable protection against harmful interference in a residential installation. This equipment generates, uses and can radiate radio frequency energy and, if not installed and used in accordance with the instructions, may cause harmful interference to radio communications. However, there is no guarantee that interference will not occur in a particular installation. If this equipment does cause harmful interference to radio or television reception, which can be determined by turning the equipment off and on, the user is encouraged to try to correct the interference by one or more of the following measures:

- Reorient or relocate the receiving antenna.
- Increase the separation between the equipment and receiver.
- Connect the equipment into an outlet on a circuit different from that to which the receiver is connected.
- Consult the dealer or an experienced radio/TV technician for help.

RF Exposure Statement

The device has been evaluated to meet general RF exposure requirement. The device can be used in portable exposure condition without restriction.