

# **User Manual**

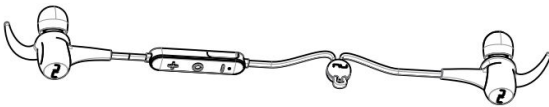


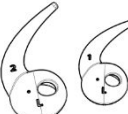


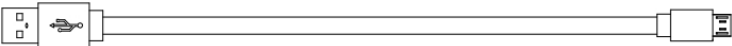


## **Optoma NuForce *Bluetooth* BE Sport4 In Ear Headphones**

**Regulatory model name: APBESPORTH**

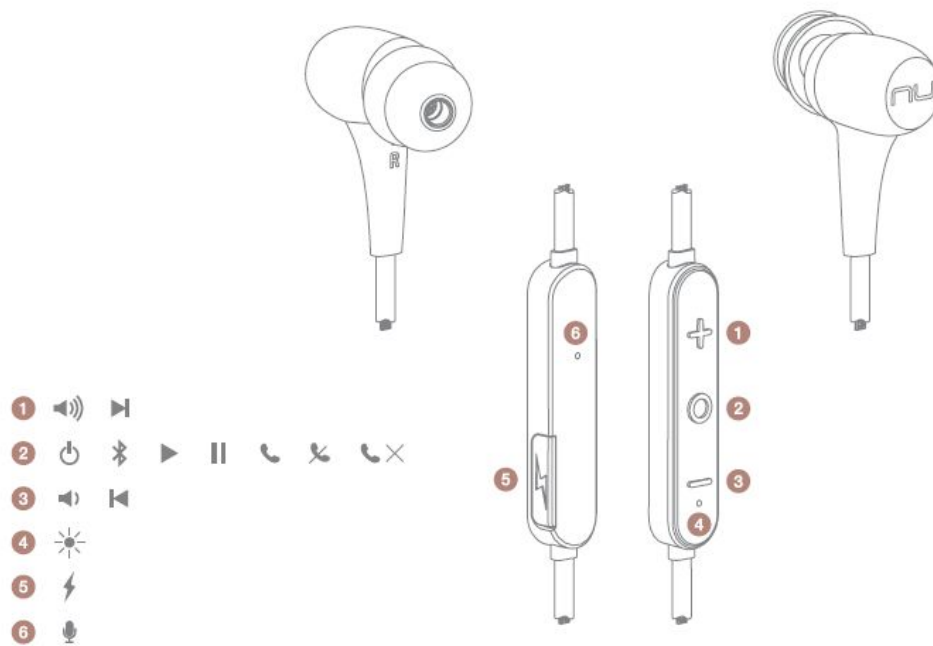
# Contents

- **WHAT'S IN THE BOX**
- **BE SPORT4 EARPHONES**
- **THE BASICS**
  - Charging your BE Sport4**
  - Checking battery level**
  - Bluetooth pairing**
  - Power On/ Power Off**
  - Wearing your BE Sport4**
  - Handling phone calls**
  - Listening to music**
  - Pairing with a laptop**
  - Pairing with a Mac**
- **MISCELLANEOUS**
  - Multipoint connections**
  - Restoring factory settings**
  - Voice prompts list**
  - Disclaimer**
  - FCC Interference statement**
  - Specification**

# WHAT'S IN THE BOX

<p>BE Sport4 earphones (with inline controller and microphone)</p>	
<p>Silicon tips (in L/M/S) 2 types of silicon tips Total of 6 pairs ear tips</p>	
<p>SpinFit TwinBlade tips (1 pair)</p>	
<p>Stabilizers (in L/M) 3 colors, total of 6 pairs</p>	
<p>Cable loop for adjusting the length of cable</p>	
<p>Pouch</p>	
<p>Charging cable (Micro-USB)</p>	
<p>Basic user's manual</p>	
<p>Safety Instruction</p>	

# BE Sport4 EARPONES



1. Volume Up Button
2. Power/Function Button
3. Volume Down Button
4. LED Indicator
5. Charging port
6. Microphone

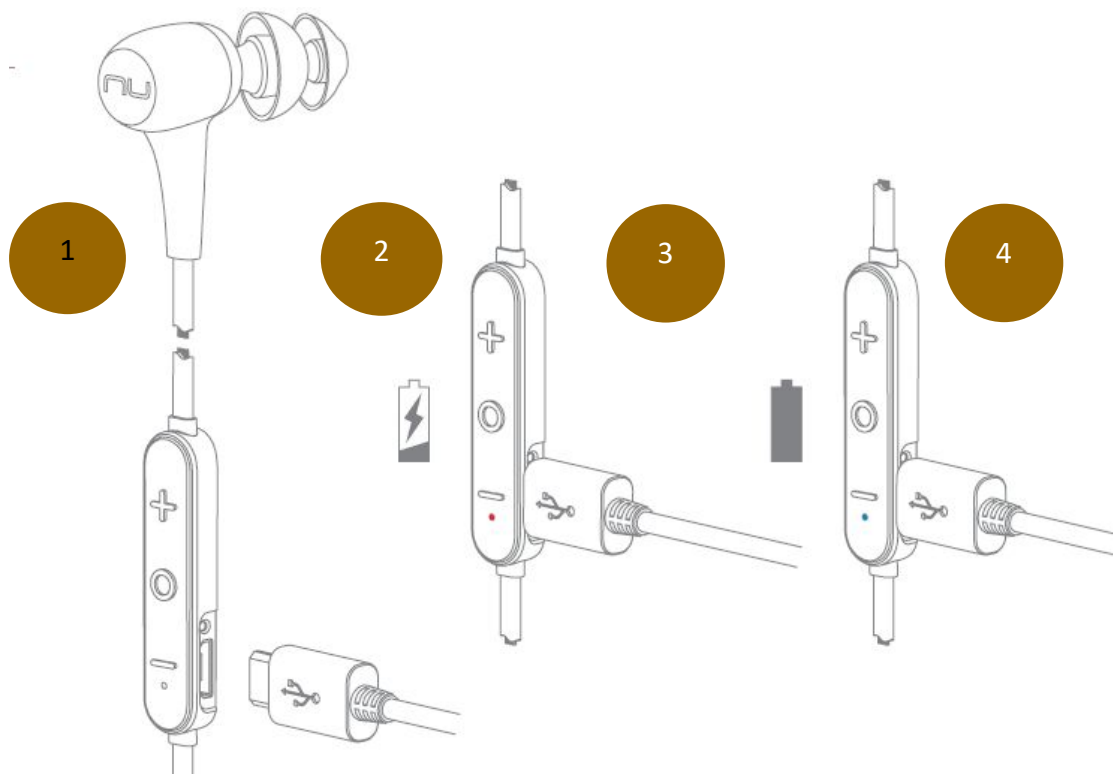
## The BASICS

## Charging Your BE Sport4

Although your BE Sport4 in-ear headphones come with a partially charged battery, it is recommended that you fully charge your BE Sport4 before first use.

1. Open the charge port cover on the in line controller.
2. The charge cable should be connected to the charge port and either to a PC or a dedicated USB charger.
3. When charging, the LED indicator is red.
4. LED Indicator turns blue once charging is complete.

*NOTE: It takes up to 1.5 hours to fully charge the BE Sport4.*



## Checking Battery Level

You can check the battery level of your BE Sport4 with the LED indicator

To check battery level:

1. Press the Power/Function, volume up, and volume down buttons simultaneously.
2. The LED indicator will flash red and blue simultaneously. The battery level will be indicated by the number of flashes, as described in the table below:

#### **Number of Flashes Battery Level**

Number of flashes	Voice prompts(enable)
2	Battery low
3	Battery at 50%
5	Full battery

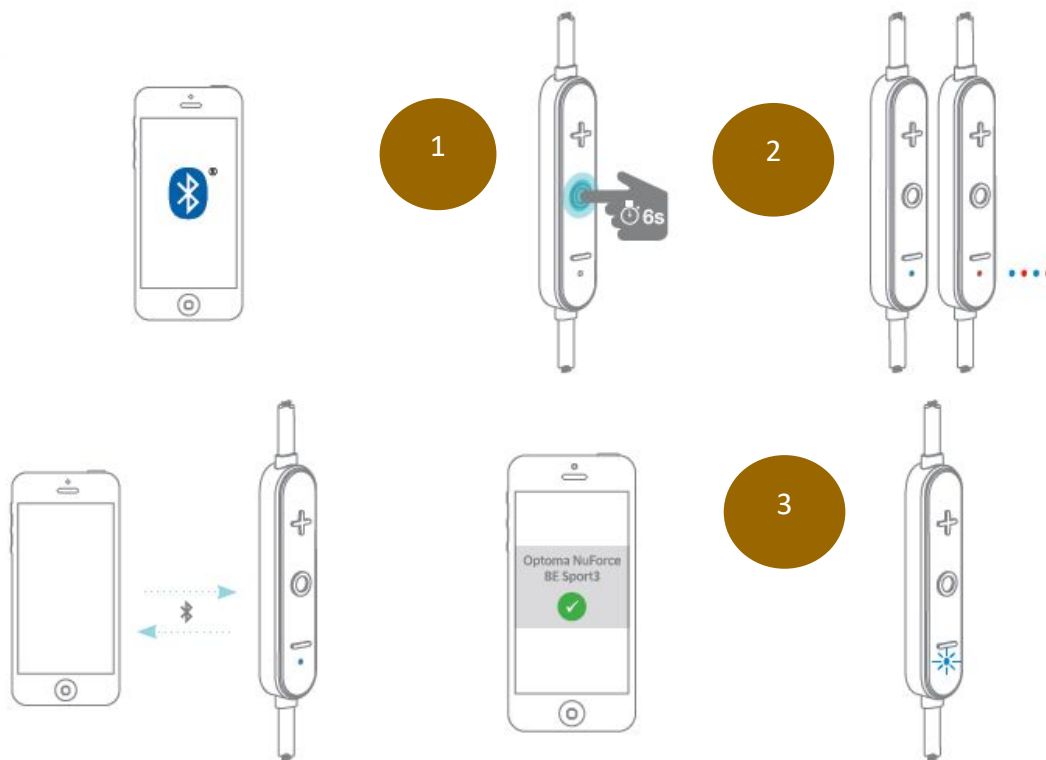
*NOTE: When the battery level is very low, you will hear a beep or a "Battery Low" voice prompt from your BE Sport4 every 2 minutes when the estimated battery reserve remaining time is under 15minutes.*

*IN ADDITION:*

1. *When the Voice prompts are switched off you will hear a beeping sound (A short double tone) every two minutes.*
2. *Users with iOS devices and some Android models will be able to view the battery status on their device 's display*

*\*On some Android and all Windows operated devices you cannot check the battery level for your BE Sport4 when you listen to music, in the middle of a phone call or in pairing mode.*

## **Bluetooth Pairing**



## Using your BE Sport4 for first time

### Pairing BE Sport4 with source device

1. Press and hold the BE Sport4's Power/Function button for 4 seconds until the LED indicator light flashes blue/red. Your BE Sport4 is now in pairing mode.
2. Turn on *Bluetooth*® on your source device, then select "Optoma NuForce BE Sport4" once it appears on the device list.

**NOTE: Consult your source device's user manual for instructions on activating Bluetooth.**

3. Once successfully paired, the LED indicator will flash blue and you hear "Primary device connected" (when voice prompt enabled) from your BE Sport4, or a beep if voice prompt is not enabled.

Please note:

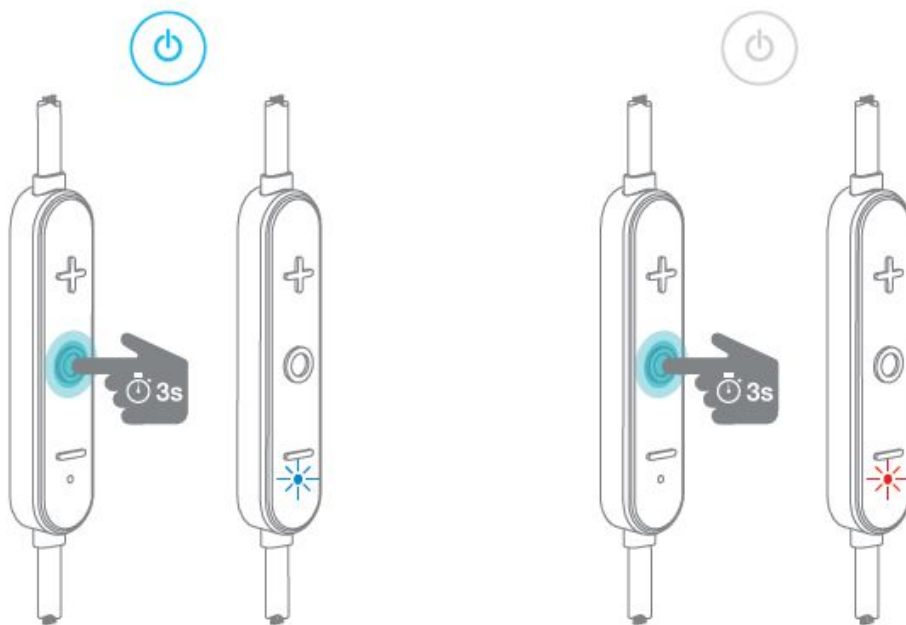
- A. You must always enter "Pair" mode from a powered-off state. Otherwise, pushing the Power/Function button for more than 3 seconds from a powered-on state turns the BE Sport4 off.
- B. If left inactive in pairing mode, your BE Sport4 will automatically power off after 3 minutes.

C. Your BE Sport4 can store pairing information for up to eight devices.

To pair additional devices to your BE Sport4 ensure that your BE Sport4 is not concurrently connected to any device, then repeat the steps 1,2,3 outlined above.

In case where your BE Sport4 have already stored pairing information for eight devices and a ninth device is paired, the stored information for the very first device will be deleted.

## Power On/Power Off



To power on your BE Sport4, press Power/Function button for about 4 seconds until the LED indicator flashes blue and you hear the “Power on” when voice prompt is activated or a beep if the voice prompt is not used.

**NOTE:**

Once you have successfully paired the BE Sport4 to a Bluetooth-enabled device, the BE Sport4 will automatically connect with that device once it is powered on again. For more information check “Bluetooth Pairing” section.

If you have stored pairing information for multiple devices and more than one of those devices is Bluetooth enabled, the BE Sport4 will

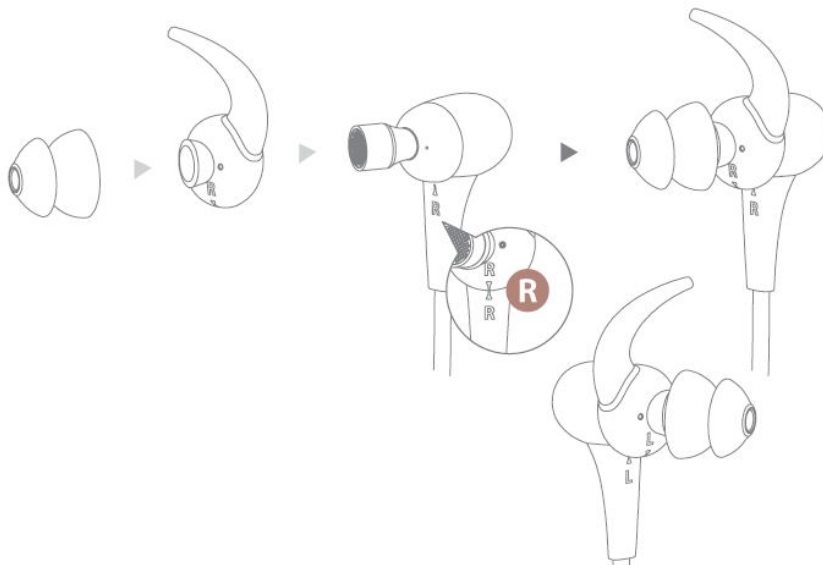


*automatically connect with the most recently paired device and will also enable multipoint connection.*

*For more information read section “Multipoint Connections”.*

To turn the BE Sport4 to OFF, push Power/Function button for about 3 seconds until the LED indicator turns red and you hear the “Power off” when voice prompt be activated or a beep if the voice prompt is not used.

## **Wearing Your BE Sport4**



To ensure a secure and comfortable fit when wearing your BE Sport4:

1. Install the stabilizers on the BE Sport4 after removing the ear tips already placed on the boxed new set.\*
2. Select right size of ear tips and install tips on BE Sport4.
3. Rotate the stabilizers and place the BE Sport4 into each ear so that they are positioned comfortably.

\*Please note, 2 different sizes of Ear wings are provided to offer optimal user's comfort

Magnetic caps at the end of the earphones let users lock the earphones together and secure them around user's neck for ease of

use.

## Handling Phone Calls

When your BE Sport4 are connected to a *Bluetooth*-enabled smartphone you can handle your phone calls directly using your BE Sport4 in ear headphones.

The followings describe phone call options:

Call option	Status	Action
Answer a call	Incoming call	Tap the Power/Function button
Decline a call	Incoming call	Press the Power/Function button for 2 seconds
End a call	In a call/outgoing call	Tap the Power/Function button
Redial the last number	Standby/connected	Double tap the Power/Function button
Mute on or mute off microphone	In a call/outgoing call	Tap the Volume Up and Volume Down simultaneously
Switching handset/earphone voice	In a call	Press the Volume Up and Volume Down buttons simultaneously for 2 seconds
Adjust the volume		Tap the Volume Up or Volume Down button
Activate Siri (iOS) or Google Voice Search (Android)	Standby/Connected	Tap the Power/Function and Volume Up buttons simultaneously

## Listening to Music


You can enjoy and control Audio through the in line controller on your BE Sport4.

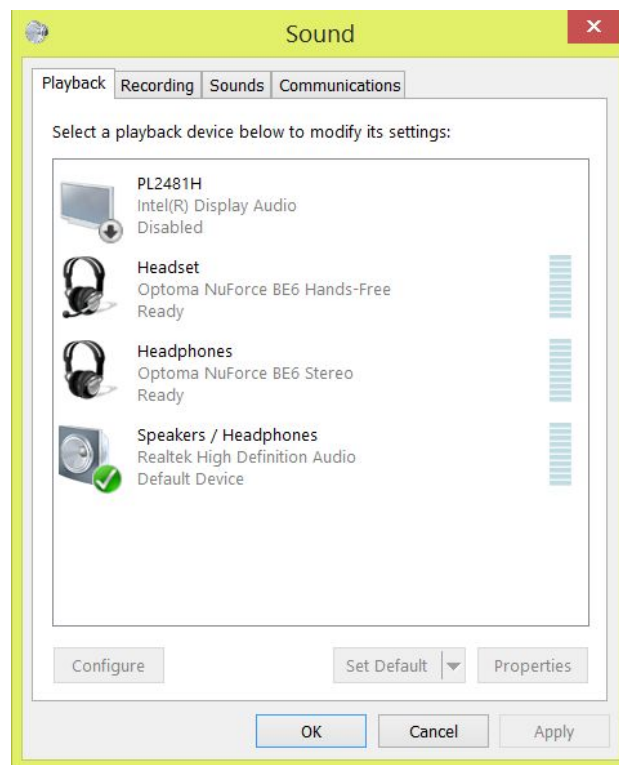
Audio option	Action
Play or pause audio	Tap the Power/Function button
Skip to next track	Press the Volume Up button for 2 seconds
Play previous track	Press the Volume Down button for 2 seconds
Adjust the volume	Tap the volume up or volume down button

**\*Please note: when muting the BE Sport4 or reactivating it from MUTE there will be a very slight delay**

## Pairing with a Laptop

The connection instructions below apply to owners of Windows 7, 8, 8.1 and 10.

1. Power your PC/Laptop
2. Find “Bluetooth Settings”
3. Switch your laptop Bluetooth to “On”
4. Turn the BE Sport4 to “Pairing Mode”
5. When the BE Sport4 is discovered by your laptop left click on “Pair”
6. Right click on the speaker symbol at the bottom right side of the screen 
7. From the dropdown menu right click on the “Playback Device”
8. Please choose and right click the “Optoma NuForce BE Sport4 stereo ready” (see image below text)
9. Click on HEADPHONES to set the “Headphones Optoma NuForce BE Sport4” as default device
10. Press OK



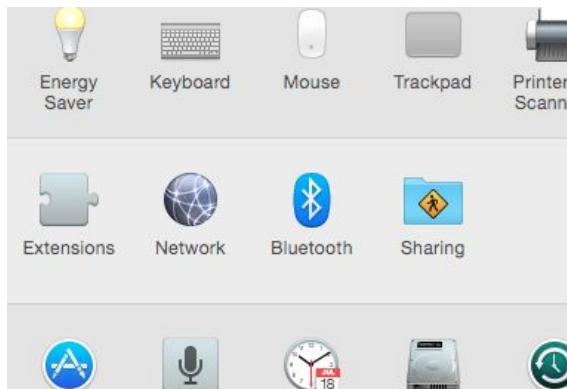
## Pairing with a Mac

The connection instructions below apply to owners of all current and recent iOS versions

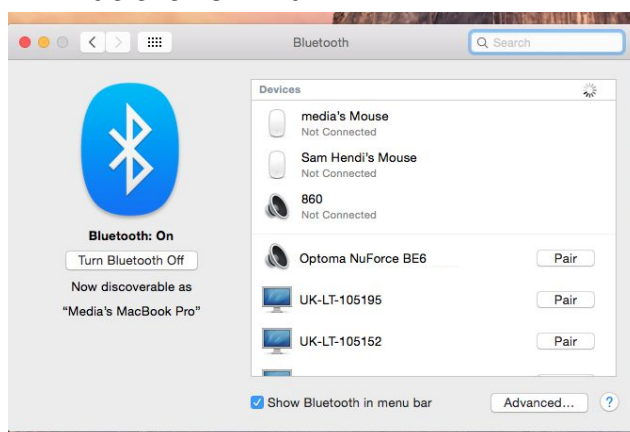
1. Power your Mac
2. Open “System Preferences”



3. Click on the Bluetooth symbol



4. Turn the Optoma NuForce BE Sport4 to “Pairing Mode”
5. When the Optoma NuForce BE Sport4 is discovered by your Mac click on “Pair”



6. Your Mac is now ready to play audio via the BE Sport4

## MISCELLANEOUS

### Multipoint Connections

If you have stored pairing information for multiple devices and more than one of those devices have Bluetooth enabled at the same time, your BE Sport4 will enable multipoint connection.

Multipoint connection allows your BE Sport4 to hold connections with two devices at the same time while playing audio signal from only one of the two devices.

Multipoint connection works in the following ways:

- Your BE Sport4 automatically connects with the most recently paired device (“Primary device”).
- You must manually connect the second device (“Secondary device”) to your BE Sport4 via its operating system.
- The BE Sport4 will prioritize the audio from Primary device.
- You can control Primary device using the BE Sport4 in line controller.
- When Primary device is idle, your BE Sport4 can receive audio from Secondary device.
- Secondary device must be controlled directly from its operating system.
- Simultaneous audio from both devices is disabled.

## **Restore Factory Settings**

When you restore the BE Sport4 to its factory settings, the paired devices stored will be deleted.

To restore factory settings:

- 1** Ensure that your BE Sport4 are not connected to any device.
- 2** Put the BE Sport4 in pairing mode.
- 3** Press simultaneously the Power/Function, Volume Up, and Volume Down buttons for 2 seconds until the LED indicator flashes red five times and you hear five short tones from the BE Sport4.

Because all pairing information is deleted after restoring factory settings, the BE Sport4 will directly enter pairing mode once powered on.

## **Voice Prompts list**

The BE Sport4 are pre-loaded with English voice prompts

"Power On"  
 "Power Off"  
 "Full Battery"  
 "Battery at 50%"  
 "Battery Low"  
 "Primary device connected"  
 "Secondary device connected"  
 "Pairing Mode Activated"  
 "Voice Dial"

Audio option	Action
Activate voice prompts	Press the Power/Function and Volume Up buttons simultaneously for 2 seconds
Turn off voice prompt	Press the Power/Function and Volume Down buttons simultaneously for 2 seconds

## Disclaimer

Please be advised, the BE Sport4 is equipped with the latest technology however functionality may vary by device.

## Federal Communication Commission Interference Statement

1. This device complies with Part 15 of the FCC Rules. Operation is subject to the following two conditions:

(1) This device may not cause harmful interference.

(2) This device must accept any interference received, including interference that may cause undesired operation.

2. Changes or modifications not expressly approved by the party responsible for compliance could void the user's authority to operate the equipment.

NOTE: This equipment has been tested and found to comply with the limits for a Class B digital device, pursuant to Part 15 of the FCC Rules. These limits are designed to provide reasonable protection against harmful interference in a residential installation.

This equipment generates uses and can radiate radio frequency energy and, if not installed and

used in accordance with the instructions, may cause harmful interference to radio communications. However, there is no guarantee that interference will not occur in a particular installation. If this equipment does cause harmful interference to radio or television reception, which can be determined by turning the equipment off and on, the user is encouraged to try to correct the interference by one or more of the following measures:

Reorient or relocate the receiving antenna.

Increase the separation between the equipment and receiver.

Connect the equipment into an outlet on a circuit different from that to which the receiver is connected.

Consult the dealer or an experienced radio/TV technician for help.

### **FCC Radiation Exposure Statement**

The device has been evaluated to meet general RF exposure requirement. The device can be used in portable exposure condition without restriction.

## **CE**

Max RF power

BT3.0 (2402-2480MHz) : 2.5dB

RF exposure information: The Maximum Permissible Exposure (MPE) level has been calculated based on a distance of d=0 cm between the device and the human body.

CAUTION RISK OF EXPLOSION IF BATTERY IS REPLACED BY AN INCORRECT TYPE.  
DISPOSE OF USED BATTERIES ACCORDING TO THE INSTRUCTIONS

**Excessive sound pressure from earphones and headphones can cause hearing loss.**



#### Regulatory Conformance

Hereby, Optoma Corporation. declares that the radio equipment type [Bluetooth earphones APBESPORTH] is in compliance with Directive 2014/53/EU.

The full text of the EU declaration of conformity is available at the following internet address: [www.Optoma.com](http://www.Optoma.com)



Notice: This device may be used in each member state in EU

#### NCC

依據低功率電波輻射性電機管理辦法

第十二條

※經型式認證合格之低功率射頻電機，非經許可，公司、商號或使用者均不得擅自變更頻率、加大功率或變更原設計之特性及功能。

第十四條

※低功率射頻電機之使用不得影響飛航安全及干擾合法通信；經發現有干擾現象時，應立即停用，並改善至無干擾時方得繼續使用。

-前項合法通信，指依電信法規定作業之無線電通信。

-低功率射頻電機須忍受合法通信或工業、科學及醫療用電波輻射性電機設備之干擾。

Administrative Regulations on Low Power Radio Waves Radiated Devices



warning:

#### Article 12

Without permission granted by the NCC, any company, enterprise, or user is not allowed to change frequency, enhance transmitting power or alter original characteristic as well as performance to a approved low power radio-frequency devices.

#### Article 14

The low power radio-frequency devices shall not influence aircraft security and interfere legal communications; If found, the user shall cease operating immediately until no interference is achieved.

The said legal communications means radio communications is operated in compliance with the Telecommunications Act.

The low power radio-frequency devices must be susceptible with the interference from legal communications or ISM radio wave radiated

## Specification

Connection type

Bluetooth 2.4Ghz

Bluetooth type

V4.1

Bluetooth profile	HSP 1.2, HFP 1.6, A2DP 1.2, AVRCP 1.4 , aptX, AAC	
Codec	SBC, aptX, AAC	
Cable length	580 +/- 20 mm	
Driver Type	Dynamic	
Driver size	6 mm	
Impedance	16 Ohm	
Battery life (estimated)	Up to 10 hours	
Battery type	Lithium-ion battery, Cylindrical Type, Typical 3.7V/75mAh x2 pcs	
Microphone sensitivity	-42 +/-3 dB	
Frequency response	20Hz - 20kHz	
Sensitivity	94dB +/-3dB at 1KHz	
power consumption	15mA at A2DP mode, speaker output 75dB SPL	
Range	Up to 10m	
Weight	16	Grams
Operation temperature	0-45°C	

**Qualcomm®**  
**aptX™**



**Optoma Corporation.**  
**12F.,No.213,Sec.3, Beixin Rd.,Xindian Dist., New Taipei City, Taiwan**