

Optoma

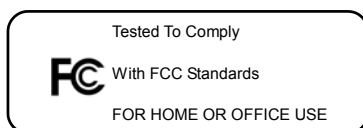
IEEE 802.11b/g/n

WIRELESS DONGLE MODULE

ACWZZN, WUSB

QUICK START GUIDE

Version 1.1



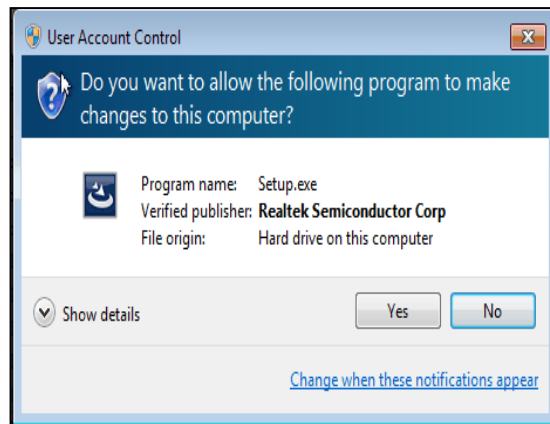
1. BOX CONTENTS

- ◆ Wireless LAN Adapter
- ◆ Quick Start Guide
- ◆ Driver CD

2. INSTALL DRIVER/UTILITY

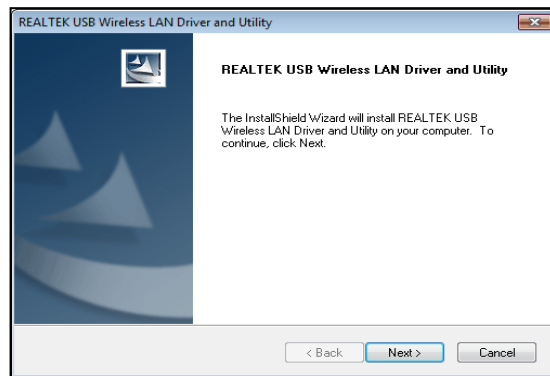
Step 1 : (Win7/8/8.1/10 only)

Insert the installation CD into your CD-ROM. Win7/8 UAC Dialog is shown. Click **Yes** to continue.



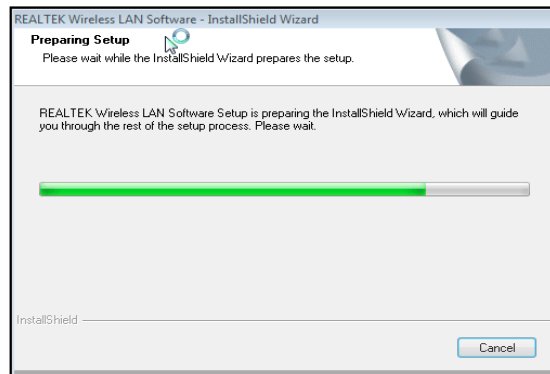
Step 2 :

Wizard is ready to install driver and utility. Click **Next** to begin the installation

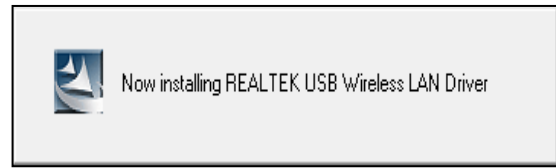


Step 3 :

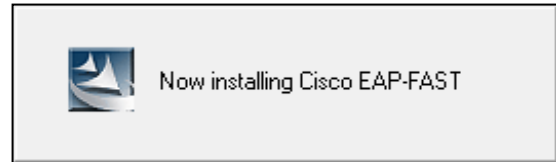
Preparing Setup dialog is shown



Installing & configuring WLAN driver and utility

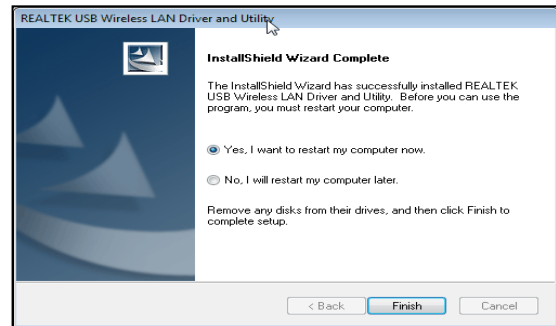


Installing Cisco 802.1x module



Step 4 :

Click **Finish** to complete installation. The installation will affect after windows rebooting



General Specification

Model Name	ACWZZN, WUSB
Product Name	WIRELESS DONGLE MODULE
Standard	802.11b/g/n
Data Transfer Rate	1,2,5.5,6,11,12,18,22,24,30,36,48,54,60,90,120,180,240,270 and maximum of 300Mbps
Modulation Method	BPSK/ QPSK/ 16-QAM/ 64-QAM/ DBPSK/ DQPSK/ CCK
Frequency Band	2.4GHz ISM Band
Spread Spectrum	IEEE 802.11b: DSSS (Direct Sequence Spread Spectrum) IEEE 802.11g/n:OFDM (Orthogonal Frequency Division Multiplexing)
Operation Mode	Ad hoc, Infrastructure
Receiver Sensitivity	11Mbps -80dBm@8%, 54Mbps -70dBm@10%, 300Mbps -64dBm@10%
Operation Range	Indoor up to 100 meters, Outdoor up to 280 meters
LED	Power
OS Support	Windows 7/8.1/10,Mac OS,Linux
Security	64 bit/128 bit WEP, TKIP, AES, WPA, WPA2
Interface	USB 2.0
Power Consumption	DC 5V Transmit: around 253 mA Receive: around 162 mA Transmit + Receive: around 274 mA
Operating Temperature	-10 – 60° C ambient temperature
Storage Temperature	-20 ~ 70°C ambient temperature
Humidity	5 to 90 % maximum (non-condensing)
Dimension	28.5x16x8mm (LxWxH)

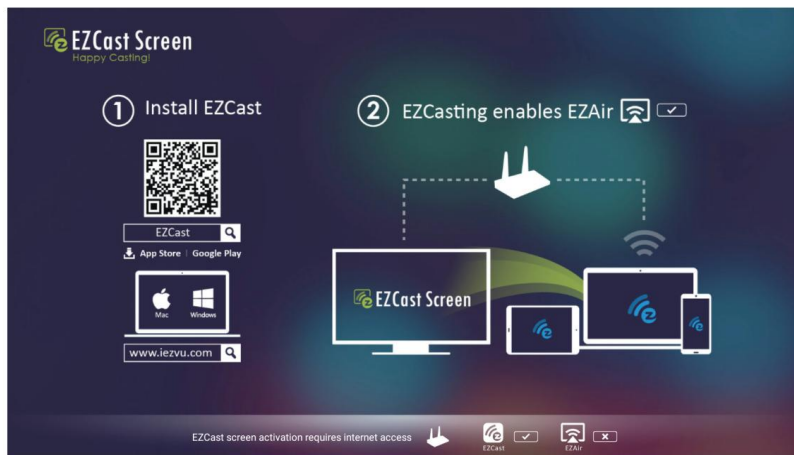
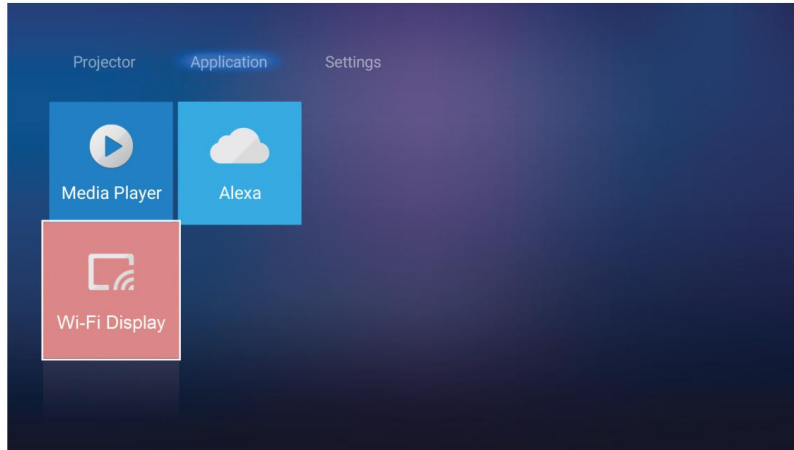
Our products only suitable for projector application it improper be installed in other products and it's not usual consumers can replace projectors by themselves.

USING THE PROJECTOR

Wireless Media Streaming

*EZCast = ACWZZN, WUSB WIRELESS DONGLE MODULE

Select **Wi-Fi Display** to project your mobile device display to the projector through Wi-Fi connection. Then press **Enter** on the remote control or **↵** on the projector keypad to enter the **EZCast** screen.



1. When using Wi-Fi Display function for the first time, download and install the EZCast application into your mobile device.
Note: You can scan the QR code shown on the screen or download from the App Store or Google Play.
2. On the projector, insert the Wi-Fi dongle and go to **Settings > Network > Wireless Setting (Wi-Fi Display)**. Then set the **Wi-Fi** setting to ON.
3. Connect the projector to an available network. For details, please refer to page 48.
4. On your mobile device, enable the Wi-Fi function. Then connect to the same network as the projector.
IMPORTANT!
 - The projector and your mobile device must be connected to the same Wi-Fi network.
 - During the Wi-Fi Display operation, make sure that you have access to the internet.

USING THE PROJECTOR

Note: The connection method may vary depending on the dongle type. Please refer to its documentation for details.

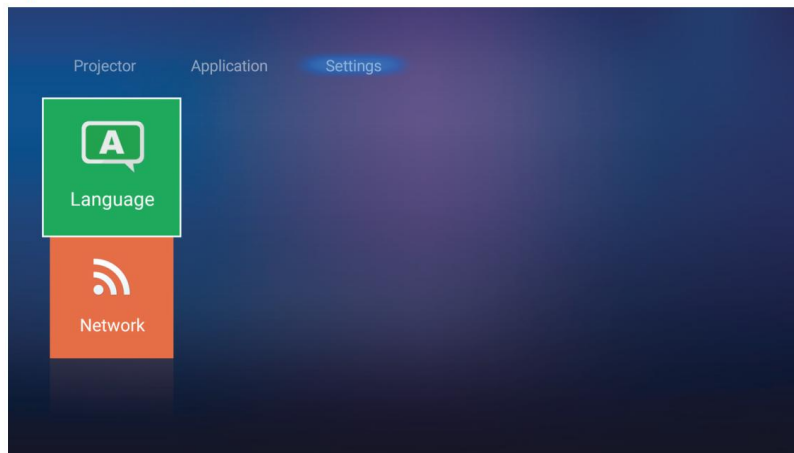
5. Launch "EZCast" application and connect to your dongle.
6. Once connected, the mobile device display will be projected on the screen.

General settings

On the **Settings** home screen, you can set the on-screen display (OSD) language and configure the network settings. To switch to the **Settings** home screen, select one of the main categories and use ◀▶ keys to select **Settings**.

Changing the OSD language

Select **Language** to set the on-screen display language. Then press **Enter** on the remote control or ◀▶ on the projector keypad to enter the **Language** menu.



The available languages appear on the screen. Select the desired language and press **Enter**/◀▶ to confirm the selection.

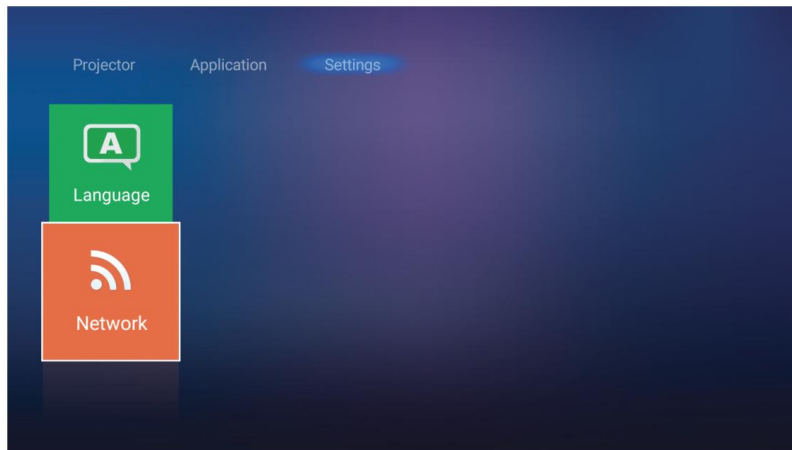


English

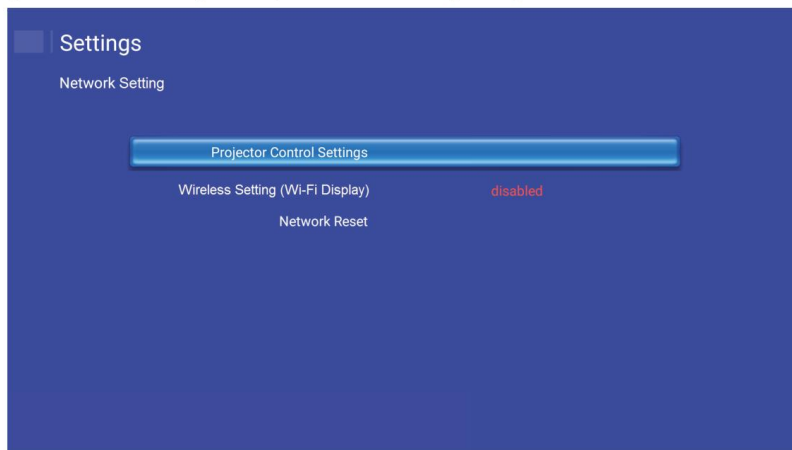
USING THE PROJECTOR

Configuring the network settings

Select **Network** to configure the network setting. Then press **Enter** on the remote control or **↵** on the projector keypad to enter the **Network** menu.



Select **Projector Control Settings**. Then perform the necessary settings.



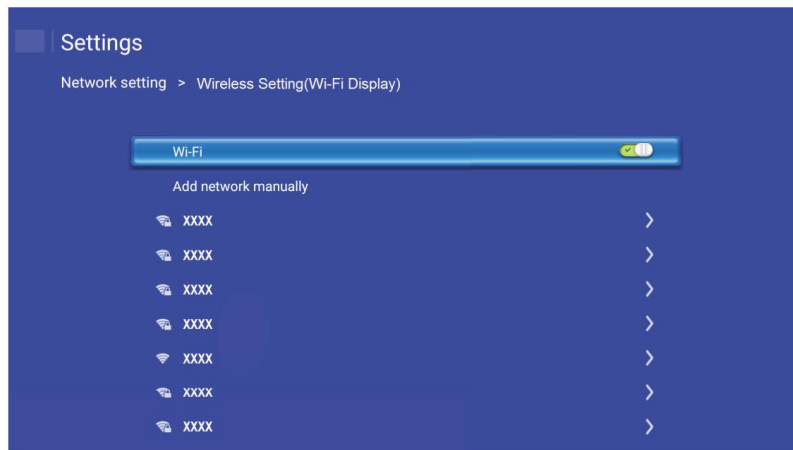
USING THE PROJECTOR

Note: To configure the wireless connection, select **Wireless Setting (Wi-Fi Display)** and do the following:

a. Insert a Wi-Fi dongle first, and then enable the Wi-Fi function.

b. Connect to an available Wi-Fi network from the list.

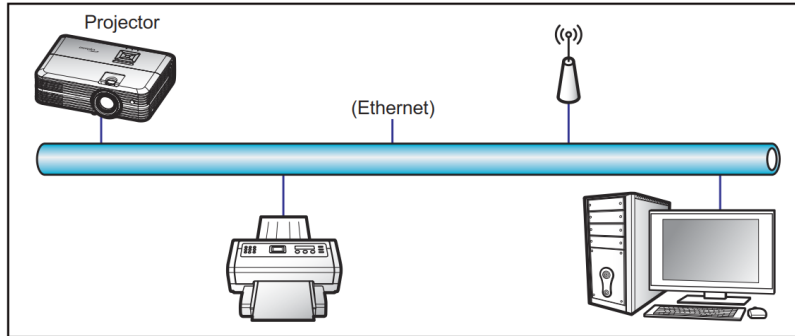
If you connect to a secure Wi-Fi network, you must enter the password when prompted.



USING THE PROJECTOR

LAN RJ45 function

For simplicity and ease of operation, the projector provides diverse networking and remote management features.



Wired LAN terminal functionalities

This projector can be controlled by using a PC (laptop) or other external device via LAN / RJ45 port and compatible with Crestron / Extron / AMX (Device -Discovery) / PJLink.

- Crestron is a registered trademark of Crestron Electronics, Inc. of the United States.
- Extron is a registered trademark of Extron Electronics, Inc. of the United States.
- AMX is a registered trademark of AMX LLC of the United States.
- PJLink applied for trademark and logo registration in Japan, the United States of America, and other countries by JBMIA.

The projector is supported by the specified commands of the Crestron Electronics controller and related software, for example RoomView®.

<http://www.crestron.com/>

This projector is compliant to support Extron device(s) for reference.

<http://www.extron.com/>

This projector is supported by AMX (Device Discovery).

<http://www.amx.com/>

This projector supports all commands of PJLink Class1 (Version 1.00).

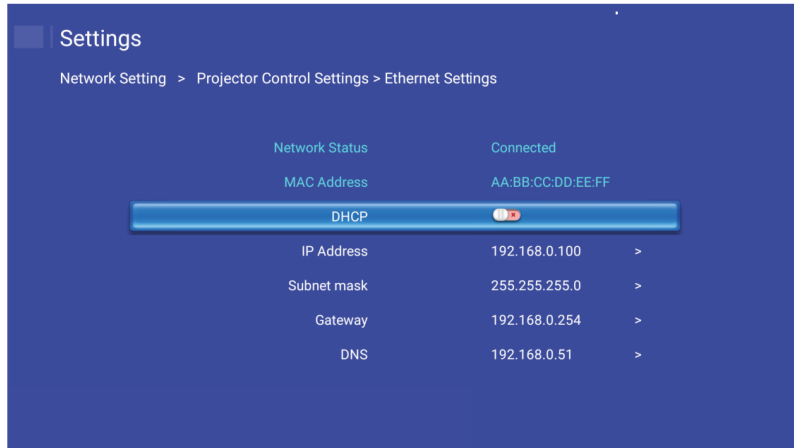
<http://pjlink.jbmia.or.jp/english/>

For more detailed information about the various types of external devices which can be connected to the LAN / RJ45 port and remote control the projector, as well as the supported commands for these external devices, please contact the Support-Service directly.

USING THE PROJECTOR

Ethernet Settings

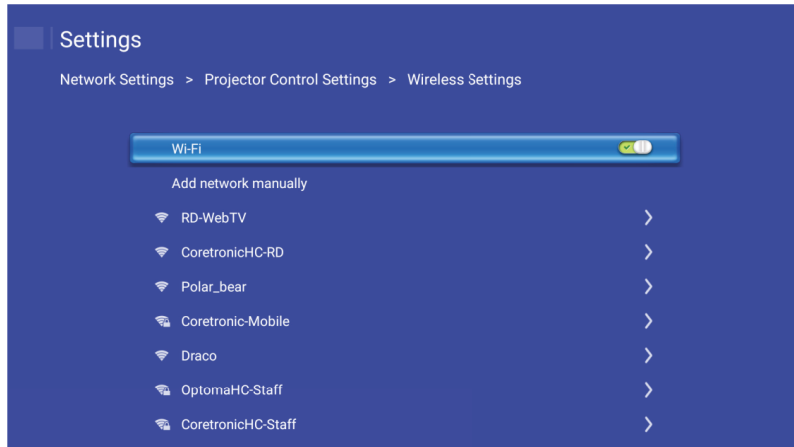
Configure the network parameters.



- DHCP: Off
- IP Address: 192.168.0.100
- Subnet Mask: 255.255.255.0
- Gateway: 192.168.0.254
- DNS: 192.168.0.51

Wireless Settings

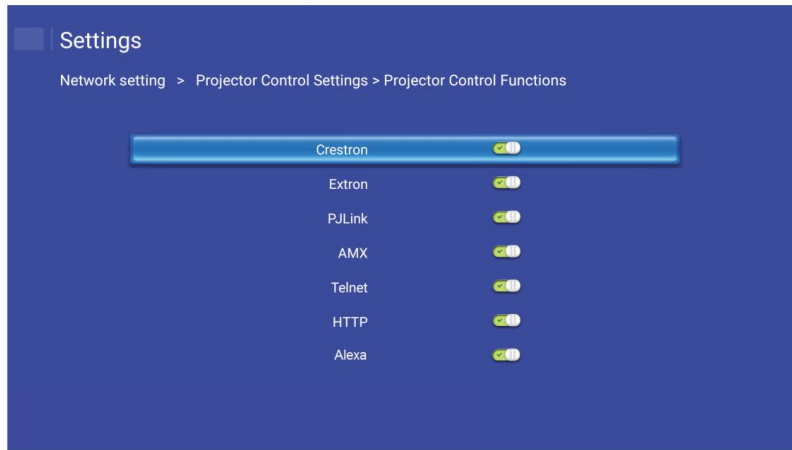
Select the wireless network you want to connect to control the projector wirelessly through various protocols including Alexa.



USING THE PROJECTOR

Projector Control Functions

Configure how to monitor and control your projector over the network.



Federal Communication Commission Interference Statement

This device complies with Part 15 of the FCC Rules. Operation is subject to the following two conditions: (1) This device may not cause harmful interference, and (2) this device must accept any interference received, including interference that may cause undesired operation.

This equipment has been tested and found to comply with the limits for a Class B digital device, pursuant to Part 15 of the FCC Rules. These limits are designed to provide reasonable protection against harmful interference in a residential installation. This equipment generates, uses and can radiate radio frequency energy and, if not installed and used in accordance with the instructions, may cause harmful interference to radio communications. However, there is no guarantee that interference will not occur in a particular installation. If this equipment does cause harmful interference to radio or television reception, which can be determined by turning the equipment off and on, the user is encouraged to try to correct the interference by one of the following measures:

- Reorient or relocate the receiving antenna.
- Increase the separation between the equipment and receiver.
- Connect the equipment into an outlet on a circuit different from that to which the receiver is connected.
- Consult the dealer or an experienced radio/TV technician for help.

FCC Caution:

- Any changes or modifications not expressly approved by the party responsible for compliance could void the user's authority to operate this equipment.

This transmitter must not be co-located or operating in conjunction with any other antenna or transmitter.

Radiation Exposure Statement:

This equipment complies with FCC radiation exposure limits set forth for an uncontrolled environment. This equipment should be installed and operated with minimum distance 20cm between the radiator & your body.

Note: The country code selection is for non-US model only and is not available to all US model. Per FCC regulation, all WiFi product marketed in US must fixed to US operation channels only.