



Customer Support

Visit ematic.zendesk.com for customer support regarding your device. To submit a request, fill out the required information online. You will be provided a ticket number regarding your issue which you can refer to when contacting us further.

You can also reach an Ematic customer service representative by calling: 1-888-968-1985.

We are open Monday - Friday 9 AM - 5 PM PST, except weekends and major holidays. Ematic strongly urges customers to email their inquiry before calling, as this will enable us to better assist you.

Our email address is: customerservice@ematic.us

Please make sure to include the model number and brief description of the problem you are encountering.

Thank you for purchasing an Ematic product.

Shaghal Ltd. 2231 Colby Ave., Los Angeles CA 90064

©2019 BLAUPUNKT. All Rights Reserved. ©2010 Bluetooth SIG, Inc. All rights reserved. The Bluetooth word mark and logos are trademarks owned by the Bluetooth SIG, Inc. and are used under license by BLAUPUNKT. SD card and related marks and logos are trademarks of SD-3C LLC. SD card not included. Shaghal Ltd. is not affiliated with SD, Bluetooth. This device complies with Part 15 of the FCC Rules. Operation is subject to the following two conditions: (1) this device may not cause harmful interference, and (2) this device must accept any interference received, including interference that may cause undesired operation. 1 year warranty from date of purchase, 90 days only on labor.

⚠ WARNING: Cancer and Reproductive Harm - www.P65Warnings.ca.gov



OMAHA206

CD & MP3 RECEIVER WITH PAIR OF 6.5" SPEAKERS Instruction Manual



Enjoy it.



Important Notice & Precautions

Thank you for using our company multimedia player! To operate the unit correctly, please read the operation manual carefully before using. Keep this operation manual for further reference.

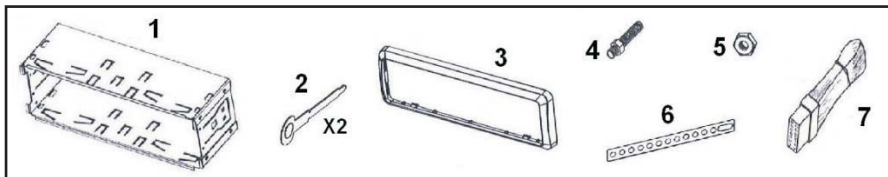
The unit is designed only for DC 12V negative ground operation system. Make sure your vehicle is connected to DC 12V negative ground electrical system. Be sure to connect the speaker (-) leads to the speaker (-) terminal. Never connect the left and right channel speaker wires together or to the vehicle body.

The normal temperature for operation is between -4 and 140 degrees Fahrenheit (-20 and +60 degrees Celsius). Do not work in extreme high or low temperature and block vents or radiator panels of the unit, blocking them will cause heat to build up inside the unit and may cause damage or fire.

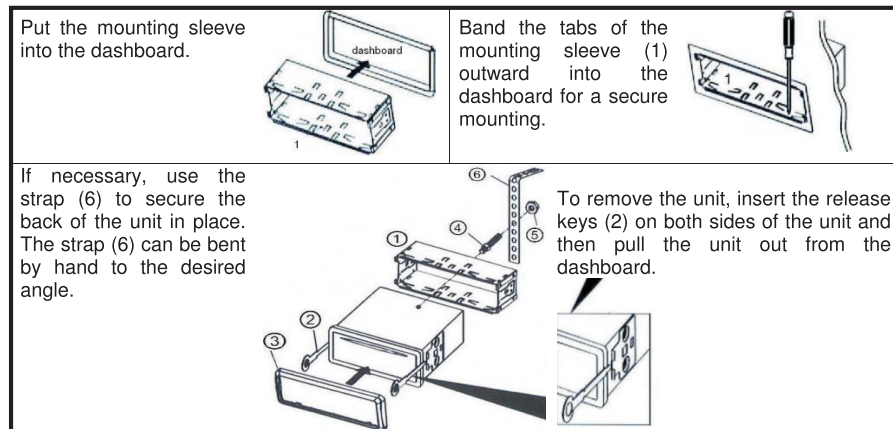
This unit can play the following discs (12 cm) and media files: MP3 / WMA / CD-R/ RW / JPEG.

Installation

Accessories included in the package for installation:

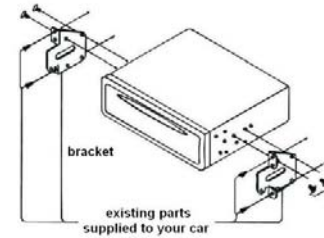


Mounting Method A:



Mounting Method B:

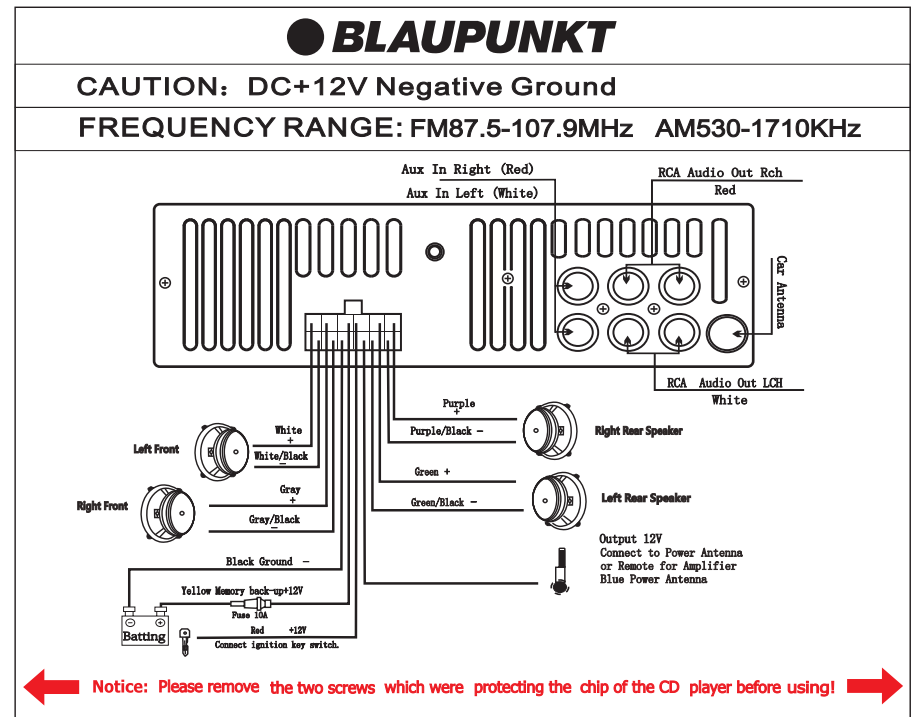
This mounting method is used for most Japanese cars. The actual mounting method should depend on the type of cars and the supplied parts.



Note:

- Store small articles in places not accessible to children
- Install only with the supplied screws
- Installation varies on type of cars and supplied parts. You should have the unit installed by qualified technician

Wiring Diagram / Connection



Troubleshooting

No Power

- Check and make sure the connecting wires are connected properly.
- Check whether the fuse is brown. Replace with the proper value fuse if necessary.

No Sound

- Check to make sure the speaker wires are connected properly.

No Picture

- Check whether the video wire is connected to the video device.

Unit Hang Up

- Turn off the unit and restart again or unplug the unit from the power supply & reconnect.

No function when pressing the buttons

- Turn off the unit and restart again or unplug the unit from the power supply & reconnect.

Poor Effect / Unable to Receive Radio

- Check whether the radio antenna is inserted or properly connected.
- Antenna may not be the proper length. Make sure the antenna is fully extended.
- Antenna may be poorly mounted. Check to make sure the antenna is properly mounted.

Stereo Cannot be Connect to Radio Mode

- Tune the radio frequency accurately.
- The broadcasting signal is too weak, set the mode to MONO.

Disc Inserted but Cannot Play

- Check whether the disc is inserted upside down.
- Check whether the disc is dirty or badly cracked.
- Lens is dirty. Clean lens by using the lens clean disc.

Picture Without Color or No Sound Under Disc / USB / SD / MMC Playback Mode

- Improper setting of color system. Set again to "PAL" or "NTSC".
- The disc is dirty or damaged. Wipe the disc with a dry, soft cloth or replace a new disc.

Abnormal Moving, Skipping, or Sound During Playback

- The disc is dirty or damaged. Wipe the disc with a dry, soft cloth or replace a new disc.

Remote Handset Does Not Work

- Replace new battery of the remote handset.
- Point the remote handset directly at the remote sensor of the main unit.
- Clean the surface of the remote sensor.

Bluetooth® Not Operating

- Check the devices are linked properly to the stereo.

Note: After the above efforts, if the unit still cannot work normally, consult your service dealer. Never attempt to disassemble the unit by yourself. No serviceable parts inside the unit.

Specifications

GENERAL

Power Requirement:	DC 12 Volts, negative ground
Load Impedance:	4 Ohms
Maximum Power Output:	40 watts x 4 (RMS)
Tone Control – Bass (at 100 Hz)	+/-8 dB
Treble (at 10 KHz)	+/-8 dB

AM (MW) RADIO SECTION

Frequency Range	530 – 1710 kHz
Usable Sensitivity (-20 dB)	25 dB

FM RADIO SECTION

Frequency Range	87.5 – 107.9 MHz
Usable Sensitivity (-20 dB)	15 dB
Signal to Noise Ratio	60 dB
Stereo Separation (at 1 KHz)	30 dB
Frequency Response	30 Hz – 15 KHz

DISC SECTION

Disc Play:	MP3 / CD
Mounting Angle:	±30 degree

VIDEO SECTION

Video System:	AUTO / PAL / NTSC
Video Output Level:	1.0Vp-p 75 Ohms
Horizontal Resolution:	500

AUDIO SECTION

Maximum Output Level:	2 Vrms (+/-3 dB)
Frequency Response:	20 Hz to 20 KHz
Signal to Noise Ratio:	85 dB
Channel Separation:	80 dB

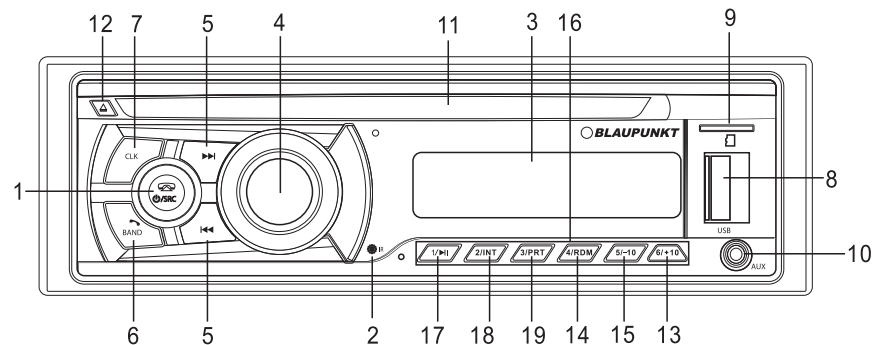
BLUETOOTH SECTION

Communication type:	V2.1
Maximum Distance:	5 meters

Note: Specifications and Design: Functions and Features: Unit Illumination: Color and Display are subject to change without prior notice. Photos and drawings on packaging or operation manual might be varied from exact unit. Depending on the input devices, operation may be varied from the operation manual described.

Main Unit Operation

Symbols, icons and phrasing as show may be varied from the exact main unit. They also show the full function of various versions and may not be available in this unit. Refer to the main unit for exact functions and features that are applicable.



1. Power ON/OFF

- When the unit is turned off, press to turn on the unit.
- When the unit is turned on, press and hold shortly to turn off the unit.

SRC / MOD - Mode Selection

- When the unit is turned on, press repeatedly to select desired mode for operation.

Bluetooth® Mode (when mobile phone is connected)

- Press to end call or refuse an incoming call.

2. IR

- Remote control sensor (for signal reception from remote handset)

3. LCD Display

- Shows the status of current unit operation.

4. Function Control (Rotary Control) - Volume Control

- Rotate to adjust sound output level.

Audio Control & Function Selector

- Press repeatedly to activate following modes and when the desired mode is reached, rotate to have setting or adjust:

Volume (VOL) - Adjust sound output level

Bass (BAS) - Adjust output level of bass

Treble (TRE) - Adjust output level of treble

Balance (BAL) - Adjust output level between left and right speaker

Fader (FAD) - Adjust output level between front and rear speaker

Loudness (LOUD ON / LOUD OFF) - Turn ON/OFF loudness control

Preset EQ (Classic, Pop, Rock, EQ Off) - Select the preset equalization mode

Local & Distant (LOCAL / DX) - on FM radio band, select FM radio reception at (LOCAL) local setting for reception of strong signal stations, or (DX) distant setting for reception of weak signal stations

Stereo & Mono (STEREO / MONO) - on FM radio band, select FM radio reception at (MONO) mono setting or (STEREO) stereo setting.

5. Radio Mode - Auto Seek ►►/◄◄

- Press to start automatic seeking frequency upward or downward to the next strong station received for broadcasting.

Radio Mode - Manual Tune

- Press and hold shortly to activate manual tuning mode. At this mode, press repeatedly to tune the radio frequency upward or downward.

Disc / USB / SD / Input Mode - Select Tracks

- Press repeatedly to shift track upward or downward for playback.

6. BND / Band - Radio Mode

- Press repeatedly to select the desired radio band for broadcasting.

BND / Band - Bluetooth Mode (when connected)

- When an incoming call is received, press to pick up the call.

- Press to dial out after phone number is dialed.

- Press to redial the last call.

- On conversation mode, press to shift conversation between main unit and mobile phone.

7. CLK / DISP

- Press to recall the time display.

Time Setting

- Press and hold shortly until the hour digits start blinking to activate time setting mode. At this mode, rotate FUNCTION CONTROL to adjust the hour and press to confirm, it will then change to minute setting. Rotate FUNCTION CONTROL to adjust the minute. After setting time, press CLK or DISP shortly to confirm.

8. USB

- Insert USB device to this slot for digital files playback.

- Important: The USB port is intended only for data transfer, other devices cannot be used with this USB connection. The use of USB extension cord is not recommended.

9. SD /

- Insert MicroSD™ (TF) card to this port for digital files playback.

10. AUX

- Insert an external device to this jack in order to have output of the external device through the unit.

11. DISC SLOT

- Insert or remove disc from the disc slot.

12. EJ / ▲ - Disc Input Mode

- Press to eject disc from the disc slot.

Bluetooth Mode

- Press and hold shortly to disconnect the connection of the stereo and the mobile phone (if/when the mobile phone is connected).

13. +10

- On Disc / USB / SD input mode, press each time to select every 10 tracks upward for playback.

14. RDM

- On Disc / USB / SD playback mode, press to start random playback of the device. Press again to resume normal playback mode.

15. -10

- On Disc / USB / SD input mode, press each time to select every 10 tracks downward for playback.

Disc / USB / SD / Input Mode - Track Fast Forward / Rewind

- Each time press and hold shortly to activate various fast forward/rewind speeds for playback.

Bluetooth Music Playback Mode - Select Tracks

- Press repeatedly to shift track upward or downward for playback.

16. PRESET MEMORY STATION 1-6

- On radio mode, press any one of the preset numbers to select a station that had been stored in the memory for broadcasting. Press and hold shortly any of the preset numbers, this will store the current broadcasting station in the memory.

17. ►||

- On all modes, press to start pause or resume.

18. INT

- On music playback mode under Disc / USB / SD card input, press to start intro playback of the input device. Press again to resume to normal playback mode.

19. RPT

- On Disc / USB / SD card playback mode, press to select various repeat playback modes of the device.

Note: Depends on different type of discs and media files that recorded, not all operations as described in the above operation manual can be functioned.

Connect & Disconnect Bluetooth®

Connect mobile phone:

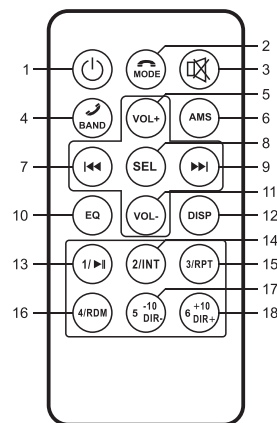
To connect Bluetooth with mobile phone, take the phone and follow these steps:

- Turn on the Bluetooth operation on mobile phone
- Start to search for a new device on mobile phone
- After search is complete, click "OMAHA206"
- Input the default code "0000" or "8888" (if required) on mobile phone and confirm the setting
- "BT ON" will appear shortly on the LCD display of the main unit when the connection is a success

Disconnect mobile phone:

To disconnect Bluetooth with mobile phone, press and hold shortly "EJ" (Eject) on the main unit, "BT OFF" will appear shortly on the LCD display of the main unit when the connected device is unpaired or disconnected.

Remote Handset Operation



BATTERY REPLACEMENT

Refer to the back of the remote handset for details on how to replace the batteries.

NOTE

Attention should be drawn to the environmental aspects of battery disposal.

Batteries shall not be exposed to excessive heat such as sunshine, fire or anything similar.

Danger of explosion if battery is incorrectly replaced. Replace only with the same or equivalent type.

1. Power ON/OFF

- When the unit is turned off, press to turn on the unit.
- When the unit is turned on, press and hold shortly to turn off the unit.

2. MODE - Mode Selection

- When the unit is turned on, press repeatedly to select desired mode for operation.

Bluetooth® Mode (when mobile phone is connected)

- Press to end call or refuse an incoming call.

3. MUTE - Sound Mute Control

- During unit operation, press to turn on or off audio/sound.

4. BAND - Radio Mode

- Press repeatedly to select the desired radio band for broadcasting.

5. - 11. VOLUME +/-

- Adjust sound output level.

6. AMS

Radio Mode - Auto Scanning

- Press to start scanning all preset stations on memory and stop for a few for broadcasting.

Radio Mode - Auto Preset Memory & Scanning

- Press and hold shortly to start searching the frequency and store the strongest signal station into the preset stations. Once cycle is completed, the unit starts scanning all the preset stations and stop a few seconds for broadcasting.

Disc / USB / SD Card Playback Mode

- Press and hold shortly to activate track searching mode. On this mode, press the number key directly to input the desired track number for playback.

7. - 9. Radio Mode - Auto Seek ►| / |◀◀

- Press to start automatic seeking frequency upward or downward to the next strong station received for broadcasting.

Radio Mode - Manual Tune

- Press and hold shortly to activate manual tuning mode. At this mode, press repeatedly to tune the radio frequency upward or downward.

Disc / USB / SD / Input Mode - Select Tracks

- Press repeatedly to shift track upward or downward for playback.

8. SEL

- Press to choose BASS, TREBLE, LEFT CHANNEL, RIGHT CHANNEL

10. EQ

- Press repeatedly to select the preset equalization mode.

12. DISP

- Display the information of Track / Artist / Folder under the state of USB / SD playing.

13. ►II

- On all modes, press to start pause or resume.

14. INT

- On music playback mode under Disc / USB / SD card input, press to start intro playback of the input device. Press again to resume to normal playback mode.

15. RPT

- On Disc / USB / SD card playback mode, press to select various repeat playback modes of the device.

16. RDM

- On Disc / USB / SD playback mode, press to start random playback of the device. Press again to resume normal playback mode.

17. -10

- On Disc / USB / SD input mode, press each time to select every 10 tracks downward for playback.

18. +10

- On Disc / USB / SD input mode, press each time to select every 10 tracks upward for playback.

Note: Depends on different type of discs and media files that recorded, not all operations as described in the above operation manual can be functioned.

changes or modifications not expressly approved by the party responsible for compliance could void the user' s authority to operate the equipment.

Note: This equipment has been tested and found to comply with the limits for a Class B digital device, pursuant to Part 15 of the FCC Rules. These limits are designed to provide reasonable protection against harmful interference in a residential installation. This equipment generates, uses, and can radiate radio frequency energy, and if not installed and used in accordance with the instructions, may cause harmful interference to radio communications. However, there is no guarantee that interference will not occur in a particular installation. If this equipment does cause harmful interference to radio or television reception, which can be determined by turning the equipment off and on, the user is encouraged to try to correct the interference by one or more of the following measures:

- Reorient or relocate the receiving antenna.
- Increase the separation between the equipment and receiver.
- Connect the equipment into an outlet on a circuit different from that to which the receiver is connected.
- Consult the dealer or an experienced radio/TV technician for help.

This equipment complies with FCC radiation exposure limits set forth for an uncontrolled environment. This equipment should be installed and operated with a minimum distance of 20cm between the radiator & your body. This transmitter must not be co-located or operating in conjunction with any other antenna or transmitter.



OMAHA206

CD & MP3 RECEIVER WITH PAIR OF 6.5" SPEAKERS Instruction Manual

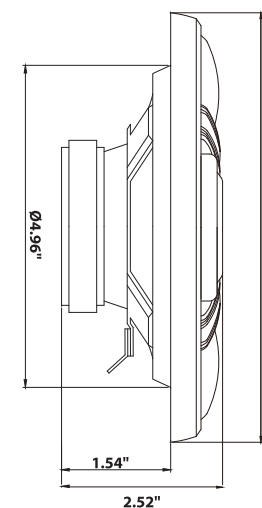
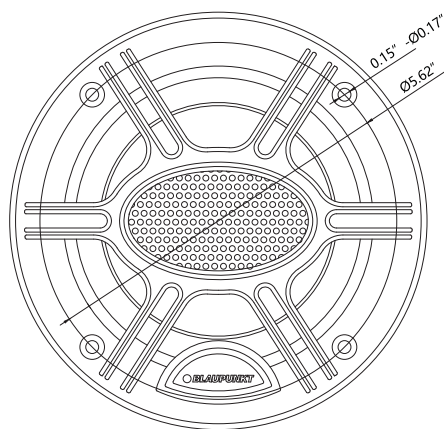


Enjoy it.

Specifications

- 6.5" 4-Way Coaxial Speakers
- High Quality Polypropylene Cone
- Butyl Rubber Surround
- 1" High Temperature Aluminum Voice Coil
- Ceramic Magnet
- Mylar Dome Tweeter
- 120 Watts RMS / 360 Watts Peak
- Impedance: 4 Ohm
- Frequency Response: 80Hz – 20KHz
- Sensitivity: 90dB

Dimensions



WARNING

Continuous, excessive exposure to sound pressure levels in excess of 85dB can cause hearing loss. While BLAUPUNKT sound systems are capable of producing sound pressure levels greater than 85dB, they are also designed for enjoyment at reasonable levels. Please observe all local sound ordinances while listening to your BLAUPUNKT sound system.
Need we say more! Use common sense.

Mounting

NOTE: BLAUPUNKT strongly recommends that you operate your system at low volume levels prior to the completed installation of your BLAUPUNKT series speakers. This will allow for a test of the speakers before permanently securing them to a location.

CAUTION: Make sure that all of the speaker's wiring is fully protected from cuts, tears and possible wear. Any short circuits created from cuts, tears or wear could severely damage the source unit or amplifier. Make sure all speaker wires easily reach the speakers' terminal with no stress on the wire or connectors.

IMPORTANT: Never cut any metal that is an integral part of the vehicle's safety or structural support system. Again, if you are unsure, it is best to have the speakers professionally installed. Never sacrifice your safety for sound.

CHOOSING A LOCATION: It is always best to plan the complete installation prior to attempting to install any product. The routing of wires, power connections and mounting locations should be planned first. As with any car stereo installation, all work performance should be checked thoroughly and carefully prior to the operation of the system.

The placement of your BLAUPUNKT speakers within your vehicle will greatly affect the overall performance of your audio system. Every car model is different, so installation into particular locations of the vehicle may not be possible without modifications.

BLAUPUNKT speakers are designed to fit in almost any factory location. Again, if at all possible, it is recommended that you use a factory location. This applies mostly to later car models. For those earlier models that do not have factory locations or are limited to just front speaker, it is recommended that you choose a location with a sufficient amount of air space. If you allow an insufficient amount of air space, the speaker may not produce low frequencies very well. It is recommended to mount the speaker in the door panels, kick panels, rear decks, etc. Ideally, the speakers should be mounted where they will be in an enclosed airspace. This will allow for extended bass response.

Troubleshooting

If you start experiencing problems with distorted sound or performance loss after installing your subs, you can follow the instructions below to try and locate what is causing the problem.

1). If you have any distorted sound, loss of performance, or rattling from your subs, check the connections running from your amplifier or other processors to the box. You will also want to check the connections inside the box to make sure no wires have become unhooked or are loose.

2). If the above does not solve the problem, check your enclosure thoroughly to

see if there are any leaks, cracks, or broken pieces. Any loss of structural integrity of your enclosure can cause significant performance loss and distortion.

3). The next step you can take is to remove the subs and look for any burned wire

leads or separated components. You can normally smell something burning when a sub blows or has the potential to blow. Sometimes when you play subs too hard for too long, they will start to heat up.

4). If none of the above steps solve the problem, you will want to start looking at the other components in the vehicle. Start by checking all connections to and from the box, amplifier, source unit, or any other processors you may be using. You will need to reference to that particular manufacturer for any setting configurations or troubleshooting.

Warning

Investigate the layout of your automobile thoroughly before drilling or cutting any holes. Take care when you work near the gas tanks, gas lines, hydraulic lines, and electrical wiring. Attach the system securely to the automobile to prevent damage, particularly in the event of an accident. Do not mount the system so that the wire connections are unprotected or are subject to pinching or damage from nearby objects.

The +12V DC power wire must be fused at the battery positive terminal connection. Before making or breaking power connections at the system power terminals, disconnect the +12V wire at the battery end. Confirm your radio/head unit or other equipment is turned off while connecting the input jacks and speaker terminals.

If you need to replace the power fuse, replace it only with a fuse identical to that supplied with the system. Using a fuse of different type or rating may result in damage to this system.