

■ PANTONE 306C ■ PANTONE 185C
■ PANTONE COOL GRAY 10C ■ PANTONE BLACK C

28

01



148mm

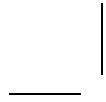


D+oi™
© 2014 SYSTECH ELECTRONICS LTD.
www.d-toi.com/zcanwireless.html



FCC ID : 2A8Q3-SSM003M
FCC ID : 2A8Q3-SSM003R
MADE IN CHINA
SSM-ZCWXX-0-QUM-4CBK-00

210mm



02



27

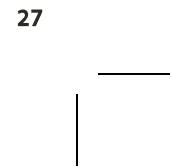
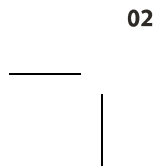
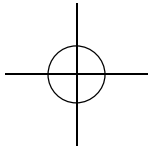
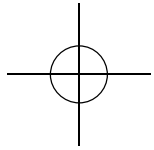
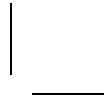


TABLE OF CONTENTS

Important Safety Instructions..... P.04

Parts Identification..... P.06

Indication Light..... P.07

Charging Zcan Wireless..... P.08

Installing The Software & Driver..... P.09

SCAN : Making Instant Digital Copies..... P.11

Editing Your Scan..... P.12

Scanning Text..... P.13

Translation Function..... P.14

Sharing Function : Facebook, Twitter..... P.15

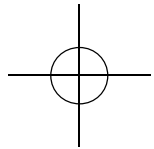
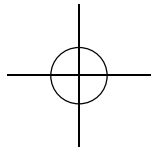
How To Add Your Social Networking Accounts..... P.16

File Retrieval : Evernote, Dropbox..... P.17

Using The Main Menu..... P.18

Troubleshooting Guide..... P.21

Specifcatons..... P.24



IMPORTANT SAFETY INSTRUCTIONS

All of the safety and operating instructions should be read, adhered to and followed before the unit is operated.

Danger

To reduce the risk of electric shock, burns, fire or injury :

1. Do not use while bathing or in a shower.
2. Do not place or store unit where it can fall or be pulled into a tub or sink.
3. Do not place in, drop or submerge in water or other liquid.
4. Do not reach for unit that has fallen into water. Unplug it immediately.
5. Care should be taken so that objects do not fall and liquids are not spilled onto the unit.
6. Do not place unit near fire.

Warning

1. Close supervision is necessary when this appliance/product is used by or near children or mentally disabled individuals.
2. Use this unit only for its intended use as described in this manual.
3. Unplug this unit during lightning storms or when unused for long periods of time.
4. Never drop or insert an object into any opening.
5. The unit should be situated away from direct sunlight or heat sources such as radiators, electric heaters, heat registers, stoves, or other units (including amplifiers) that produce heat.
6. Do not overload any electrical outlet. Use only the power source as indicated.
7. Do not carry this unit by USB cable or use USB cable as handle.
8. Never operate this unit if it has a damaged USB cable or plug, if it is not working properly, or if it has been dropped or damaged, or dropped into water. If the unit's USB cable or plug is damaged, do not attempt to fix it yourself.

Federal Communications Commission (FCC) Statement

You are cautioned that changes or modifications not expressly approved by the party responsible for compliance could void the user's authority to operate the equipment.

This equipment has been tested and found to comply with the limits for a Class B digital device, pursuant to part 15 of the FCC rules. These limits are designed to provide reasonable protection against harmful interference in a residential installation. This equipment generates, uses and can radiate radio frequency energy and, if not installed and used in accordance with the instructions, may cause harmful interference to radio communications. However, there is no guarantee that interference will not occur in a particular installation. If this equipment does cause harmful interference to radio or television reception, which can be determined by turning the equipment off and on, the user is encouraged to try to correct the interference by one or more of the following measures:

- Reorient or relocate the receiving antenna.
- Increase the separation between the equipment and receiver.
- Connect the equipment into an outlet on a circuit different from that to which the receiver is connected.
- Consult the dealer or an experienced radio/TV technician for help.

This device complies with Part 15 of the FCC Rules. Operation is subject to the following two conditions: (1) this device may not cause harmful interference and (2) this device must accept any interference received, including interference that may cause undesired operation. You are cautioned that changes or modifications not expressly approved by the party responsible for compliance could void your authority to operate the equipment.

FCC RF Radiation Exposure Statement

This transmitter must not be co-location or operating in conjunction with any other antenna or transmitter.

This equipment complies with FCC RF radiation exposure limits set forth for an uncontrolled environment.

1. The responsible party information:
Company: Prometheus Group, LLC
Address: PO Box 130100, Birmingham, Alabama 35215, USA
Telephone: 1-888-618-4496
2. Product Description: Wireless Scanner Mouse
Model Number: Zcan Wireless

Under the influence of electrostatic phenomenon, the communication link between the PC and captioned model could not be maintained and require the user to re-initialize the sample to resume the communication link







Disposal of The Device (environment)

At the end of the product lifecycle, you should not dispose of this product with normal household waste. Take this product to a collection point for the recycling of electrical and electronic equipment. The symbol on the product, user's guide and/or box indicates this.

Some of the product materials can be reused if you take them to a recycling point. By reusing some parts or raw materials from used products you make an important contribution to the protection of the environment. Please contact your local authorities in case you need more information on the collection points in your area.

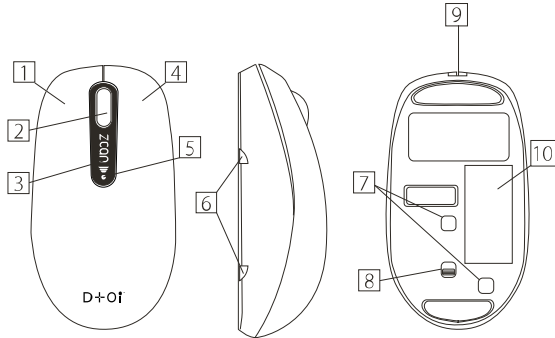
Dispose of the battery pack in an environmentally-friendly manner according to your local regulations

Requirements	
O/S	Windows® 7/8 Mac OS® X 10.6 or above
CPU	Intel Core Duo 1.2 GHz or AMD Athlon™ 64 x2 1.7GHz or better
Graphics card	128MB NVIDIA® GeForce® 8400 GS, or 128MB ATI Radeon™ X1300, 384MB Intel® GMA X3000, or better
RAM	2GB or more
Memory	At least 1 GB free hard disk space
	<ul style="list-style-type: none"> • DVD-ROM Device (for software) • Internet connection for search, share and translation • Wi-Fi is required for scanning

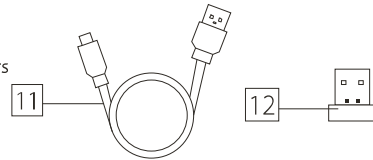
Specifications	
 Sensor	Optical Mouse Sensor 1500 cpi
 Resolution	Up to 400 dpi
 Scan size	Up to A3 (Upon memory configuration)
 USB Port	USB 2.0

9. Do not operate in the presence of explosive and/or flammable fumes.
10. Never remove the USB from the port by pulling the USB cable.
11. Do not direct the LED light or laser beam towards your eyes.
Otherwise, this may cause damage to your eyesight or a loss of vision.
12. If the product is emitting smoke, unusual odors or sounds, stop using immediately and disconnect it from the computer.
13. Do not operate or recharge the product in an extremely hot (over 35 °C) or cold (under 5 °C) area, or with high temperature variation.
14. Do not operate or recharge the product in a humid or dusty area.
15. Do not disassemble, modify or repair the product.
16. Do not apply excessive shock to the product.
17. Be careful not to drop the product or apply excessive shock to the scan window at the bottom of the product.
18. Touching the scan window with sharp objects or using the scanner on a rough surface may cause damage to the scan window . If the scan window is scratched, the quality of scanned images may deteriorate.
19. When removing fingerprints or dust off the scan window, always use a soft, dry clean cloth.
20. Recharge the product only with computer USB port or USB power adapter with 5V, 500mA output.

PARTS IDENTIFICATION



1. Left-click button
2. Scroll wheel
3. Scan button
4. Right-click button
5. Indication light
6. Scan surface indicators
7. Navigation sensor
8. On/Off switch
9. USB charging port
10. Scan window



11. USB cable
12. USB dongle

The OCR text conversion function does not work correctly

- **Was the paper moved during the scanning process ?**

Do not move the paper when scanning.

- **Is the scanned image tilted ?**

If the scanned image is tilted, text cannot be read correctly.
Be sure to make correction so that the scanned image lies vertically.

- **Is the scan resolution set to [Medium] or [Low] ?**

When using OCR, set the scan resolution to [High] or [Full]. Set the scan resolution by clicking [Options] → [Settings] → [General] → [Scan resolution].

- **Has the scan language been set ?**

Click [Options] → [Settings] → [Text recognition] and select the check box of the language appeared in the text. You can select up to three languages at the same time. E.g. when scanning French text containing English words, select the check boxes of both [French] and [English].

When Zcan Wireless is moved from right to left during the scan, a white line appears

- The appearance of white line might be due to the reflected beam of scan document's glossy surface.

Choppy image shown on scan window during the scanning process

- **Are there any interference around you?**
The scan image might be choppy when there are much interference around. Try to move to a location with fewer wireless networks.

Scanned result is blurry

- **Did you remove the protective film on the scan window ?**
Remove the protective film on the scan window at the bottom of the mouse.
- **Is there dust or dirt covering the scan window ?**
Wipe the window clean with a dry, soft cloth.
- **Did you move the mouse too fast?**
Try to slow down the scan movement of scanner mouse.

Scanning stops in the middle even when the [SCAN] button is not pressed

- **Is there any more memory available ?**
The grey bar in the top left of the scan screen indicates the remaining scan memory. This bar gradually becomes shorter and when it completely disappears, scanning stops automatically. How quickly the scan memory is consumed varies depending on your PC. Also note that scanning the areas you have already scanned consumes extra scan memory. Therefore, try to avoid scanning overlapping areas.
- **Was the mouse left unmoved for a long time after started scanning?**
Try to finish the scanning process after pressing the scan button.
- **Is the battery low?**
Low battery cannot support scanning. Please recharge the scanner mouse with USB cable.

Scanning does not resume properly after the mouse has been separated/ lifted from the document

- **Did you start scanning from an area that you have already scanned ?**
To resume scanning after the mouse being separated/lifted from the document, place the mouse on the area you have already scanned. If the mouse is placed on the area not yet scanned, the mouse will not recognize the document.

INDICATION LIGHT

The indication light on the scan button shows battery status.

- **Blue:**
 - Flashes twice while Zcan Wireless is turning On.
 - Flashes continuously during scanning process.
- **Red:**
 - Glows red when charging.
 - Flashes twice indicating low battery, can still support scanning.
 - Flashes once indicating very low battery, only mouse function provided.
 - Flashes five times showing that the power is almost exhausted. Immediate charging required.

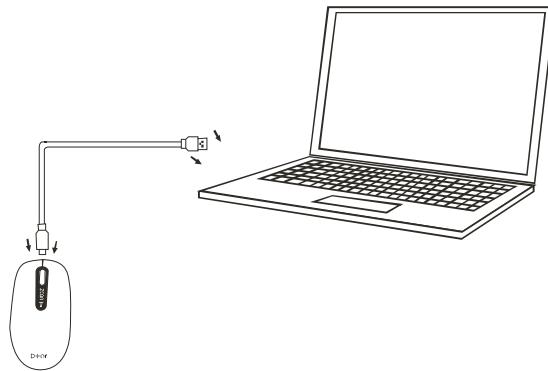
	Normal	Low battery (can still support scanning)	Very low battery (Can only provide mouse function)
Turning On	Blue light flashes twice		
Click scan button to start scanning	Blue light flashes	Red light flashes twice	Red light flashes once
Power connected	Red light is on until finished charging (*Blue light flashes while scanning)		

*It is advised to charge Zcan Wireless when the indication light turns red.

CHARGING ZCAN WIRELESS

Zcan Wireless uses a rechargeable battery that does not need replacing. The red indication light will flash to indicate low battery. To recharge the mouse battery, follow these steps:

1. Connect scanner mouse with USB cable.
2. Connect the other end of the USB cable to the computer or a compatible adapter.
3. The indication light turns solid red to indicate that the battery is charging.
4. The indication light turns off when fully charged.
5. Disconnect the USB cable from Zcan Wireless and from the computer, or adapter.



TROUBLESHOOTING GUIDE

The scan process and scan screen do not work correctly

- **Does your PC's operating system meet the system requirements ?**
Please refer to "System Requirements" on page.24.
 - **Is the Zcan Wireless connected to the USB 3.0 port ?**
If the product does not operate properly, reconnect it to the USB 2.0 port.
 - **Is system supporting problem of OpenGL?**
Depending on your PC's operating system, the Zcan Wireless may operate correctly when OpenGL rendering is disabled. Click [Settings] → [Advanced] → [Enableexpert settings] check box, and unselect the [Enable OpenGL rendering] check box. It should be noted, however, that this setting slightly reduces the scan size.
 - **Are there any game programs running ?**
If a game program is running during the scanning process, the scan may not work correctly. Close all game programs before using Zcan Wireless.
 - **Are you using the latest versions of driver software ?**
Use the latest versions of your graphics card's driver software, USB interface driver software, etc.
- An error message appears**
- **Are other applications running ?**
This product uses a lot of memory, so an error may occur when other applications are used during the scanning process. If an error occurs, shut down the Zcan Wireless software, restart the software, close other applications, and start scanning again.
 - **Are there many wireless networks around you?**
Error messages might appear when pressing the scan button due to the interference around you. Try to move to a location with fewer wireless networks for improvement.

- [**JPEG quality**] : To set the saving quality of images, press [**Options**] → [**Settings**] → [**Save**] → [**JPEG Quality**] → [**Low**], [**Medium**] or [**High**].

3. PREVIEW DOCUMENT:

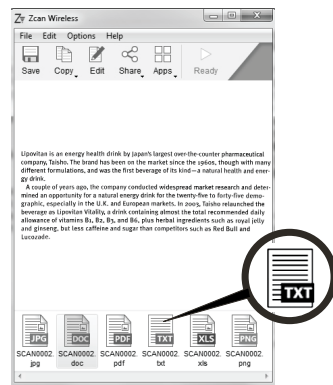
After scanning your text document, six file options are displayed at the bottom of the main menu.



Simply click into the format you want to use for preview or text editing, e.g. [DOC] for Word, [XLS] for Excel or [TXT] for NotePad.

NOTE:

Simply drag the [TXT] icon onto the target applications, e.g. webmail, Word, Excel, PowerPoint, Google translate, Twitter, Facebook, etc, your scans will be retyped on these applications instantly !
Or use [Edit] → [Copy Text] : then paste the recognized text to a compatible program.



INSTALLING THE SOFTWARE AND DRIVER (WINDOWS)

If your PC doesn't have DVD-ROM drive, or if you are a MAC user, please download the installation program from <http://www.d-toi.com/zcanwireless.html>

1. Plug the USB dongle into the USB port of the computer. Wait until the installation of its driver is complete.
2. Switch on the scanner mouse.
3. Insert the installation disc and choose the Program Installation for PC . Click the [**Install**] button to display the initial installation screen.
*execute setup.exe if the window does not appear
4. Check the compatibility with your computer, then click [**Install**].
5. Follow the on-screen instructions.
6. Click [**Finish**] button to finish the installation and start the program.

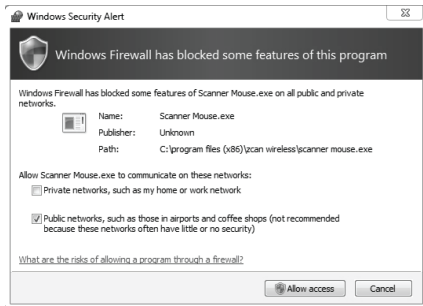
IMPORTANT !

Do not remove the USB dongle during driver installation.
Operation is not guaranteed if this product is connected via a USB hub.

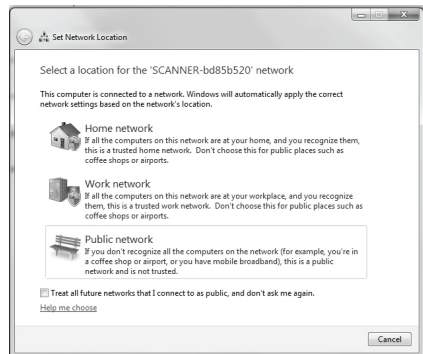
NOTE: (Cont'd)

The following windows might appear for first time installation:

- If the Windows Security Alert window appears, click **[Allow access]** to allow installation of Zcan Wireless.



- Select **[Public network]** in the Set Network Location window for the network of scanner mouse.



- **Paste scanned Text** : e.g. paste text onto webmail / Word / Excel / PowerPoint / Twitter / Facebook :
[Edit] → **[Copy Text]** → paste the recognized text to a compatible program.

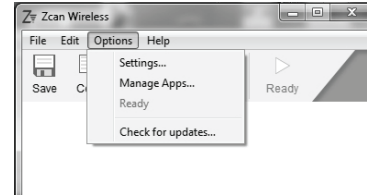
Tips: simply drag the **[TXT]** icon onto the target application.

- **Paste scanned Image** : e.g. paste image onto webmail / Word / Excel / PowerPoint / Twitter / Facebook:
[Edit] → **[Copy image]** → paste the scanned image to a compatible program.

Tips: simply drag the **[JPG]** icon onto the target application.

2. CHANGING THE SETTINGS

Clicking **[Options]** → **[Settings]** on the tool bar to change major settings of the scanner program, e.g. user interface language, modify scanning resolution, change image size, change OCR language, etc.



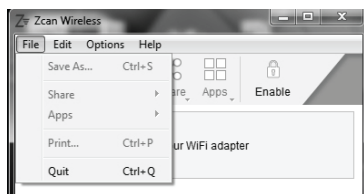
- **[User interface language]** : Change the display language.

- **[Scan resolution]** :
[Full] : Best resolution of connected hardware.
[High] : Good quality and enough for OCR.
[Medium] : Reasonable quality for OCR and good scan length.
[Low] : Maximum scan length.
*The default scan resolution is **[High]**.

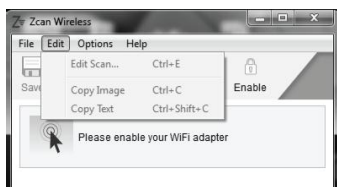
The resolution may be lower than the maximum available options due to your computer specifications and/or user settings. Note: When the OCR (Text Recognition converting text from your scan) function is used, always set the resolution to **[High]** or above.

USING THE MAIN MENU

1. Clicking **[File]** or **[Edit]** on the tool bar, it includes **Save, Share, Print, Apps, Edit..etc.** for the major program functions.



- **Save As :** Save the scanned image as an image format (png, jpg, pdf) or a text format (txt, xls, doc) to the desired location.
- **Share :** Upload the scanned image to **Facebook, Twitter, Flickr,** or attach the image to an e-mail message.
- **Apps :** Export the scanned image to **Google Translate / Evernote/ Dropbox..etc.**
- **Print :** Activate the print dialog box and print by using the designated printer.



- **Edit Scan :** Adjust the hue, brightness, saturation and contrast value; select, rotate and enlarge the image.
- **Re-edit the scanned Image :** re-size/rotate/enlarge. Double-click the scanned image (shown on the main window) to display the edit screen for image re-editing.

SCAN : Making instant digital copies

1. Enable the Wi-Fi network of the computer.
2. Plug the USB dongle into the computer, switch on the On/Off switch and open the software.
3. Put the scanner mouse on your document, press the scan button once.
4. Swipe slowly to scan what you need.
5. Press the scan button to stop scanning. (To cancel, press the **[ESC]** button.)

The memory available will decrease according to the increase in mouse movements. When the scan memory is used up, scanner mouse will stop scanning. Please finish scanning before the memory is used up.

The scanner mouse will automatically connect to the computer's Wi-Fi network when you press the scan button, and return to the previous network after scanning.

Remaining available memory display

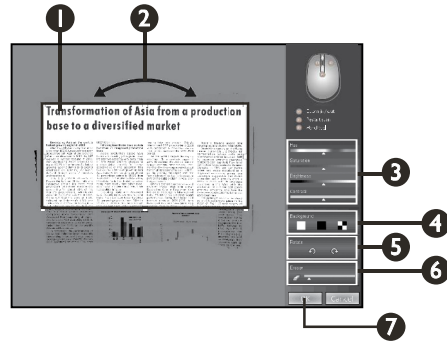


The main area of the window shows your finished document, and automatically crops and straighten your scan. To Edit your scan - see p12.

NOTE:

- The biggest scan size is A3, but the scan size varies greatly, depending on the PC's operating environment. Set the resolution to [Low] to maximize the scan size. (This function is available only on a PC that meets the system requirements.)
- If the scan window turns yellow or red during scanning, you may be moving your Zcan Wireless too fast. Try to slow down.
[YELLOW]: The mouse scanner is moving too fast.
[RED]: Slow down immediately.
- Zcan Wireless will not work on glass. Remove the glass from the document, or put document on top of the glass surface.
- Scanning wrinkled or creased documents, curled documents, torn documents or documents with paper clips or staples, carbon paper, coated paper, extremely thin and translucent paper, or paper with adhesive notes only, corner or edge of books, thick books and same pattern of images may damage the documents or produce unwanted results.
- Zcan Wireless will auto reduce the view size during the scanning process. Please use the scroll wheel to enlarge/reduce the size of image to check if the scanned image is accurate or not.
- If Zcan Wireless fails to link to the scan interface, please check if the Wi-Fi function of your computer is switched on.

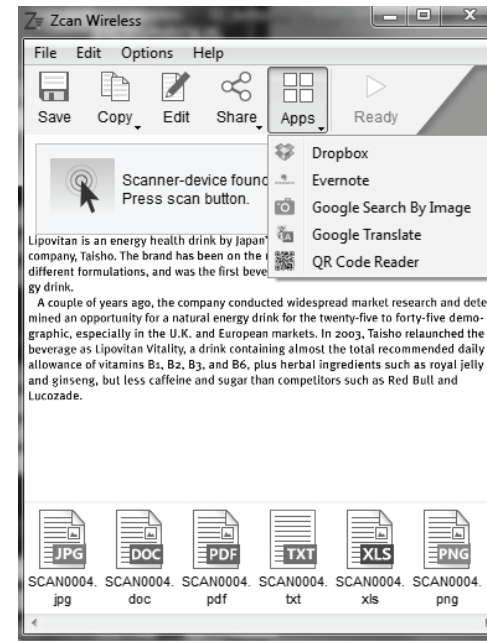
EDITING YOUR SCAN



1. **Change the area**
Drag the border to adjust the image area.
2. **Rotate**
Drag to rotate the image.
3. **Adjust the color**
You can adjust the Hue, Saturation, Brightness and Contrast.
4. **Background**
You can change the background color of the image.
5. **90-degree rotation**
You can rotate the image by 90 degrees at a time.
6. **Eraser**
- Click and use the slider to adjust the size of the eraser.
- Drag the mouse over the area you want to erase, to erase the area.
7. **Click [OK]**
The edited image is confirmed and the main menu screen appears.
SCAN-To-Text conversion (OCR) starts.

FILE RETRIEVAL: EVERNOTE, DROPBOX

You can keep the scanned documents organized by the add-on applications :
Evernote or **Dropbox**. Click **[Apps]** button, choose **[Evernote]** or **[Dropbox]**.



NOTE:

- Please make sure that **Evernote** was installed on your computer and log-in to your Evernote account.

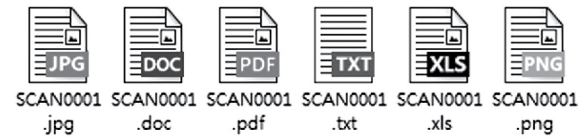
HOW TO ADD YOUR SOCIAL NETWORKING ACCOUNTS

You have to authenticate your account once to enable the sharing function. The scanned image would be uploaded to the authenticated account automatically next time when you access that social networking service. For example, Zcan Wireless software is an application that automatically uploads a scanned image to the added account. Authenticating your **Twitter, Flickr** or **Facebook** account.

1. Click on the app icon that you want to use.
2. Fill in your account information and log in to your account.
3. Follow the on-screen instructions to confirm authorization and connect with your account.
4. When uploading scanned images to an account you will be prompted to a preview screen. In this preview screen you will be able to add any caption you would like before posting your image. Titles are not automatically assigned to the images that will be posted.
5. When the image is successfully uploaded to your account, a message notifying that the image upload is successful will be displayed.
6. To check whether the image is uploaded to your account successfully, click through to see the uploaded image.

SCANNING TEXT : Retyping text for you

After scanning your text document, six file options are displayed at the bottom of the main menu.



Simply click into the format you want to use for text editing, e.g. **[DOC]** for Word, **[XLS]** for Excel or **[TXT]** for NotePad. Your scans will be retyped instantly.

You can also click **[SAVE]** to save your scans in the following formats:

- JPG, PNG, TIFF, BMP, PDF for image saving.
- Word, Excel, TXT for text saving.

NOTE:

- Zcan Wireless supports OCR technology. The pre-set OCR language is English.
- Zcan Wireless is also able to recognize text of other languages, e.g. French/Spanish/Chinese..etc. Go to **[Options]** → **[Settings]** → **[Text Recognition]** tick **[French/Spanish/Chinese]** → **[OK]**
You can select up to 3 languages at a time. Selecting multiple languages will increase the time required for the OCR process.
- The scanned image will be cropped into rectangular shape and is parallel to the background after scanning.
- If the image is tilted, text reading may not operate correctly. Be sure to orient the image vertically before continuing with the scan.
- If the document contains more illustrations and photographs than text, e.g. overlapping texts with graphics, the texts may not be recognized correctly.

TRANSLATION FUNCTION

Your scanned document can be translated into different languages with Google Translate (cloud service).

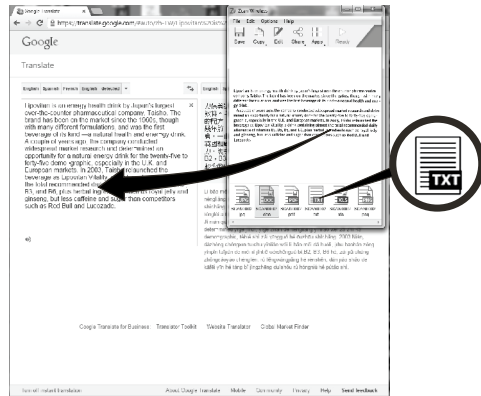
Click [Apps] → [Google Translate].

Google Translate browser appears. The scanned text will be exported to Google translate for translation.

[* Don't forget to select the necessary languages prior to translation].

NOTE:

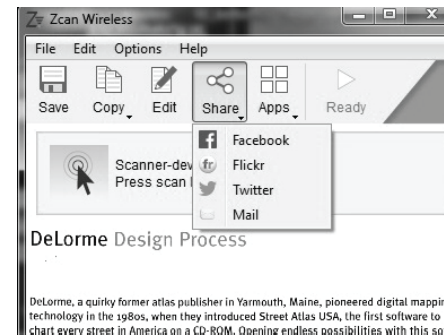
- The scanned text may not be automatically exported to Google translate if the text length is too long. In this case, simply drag the [TXT] icon into Google Translation.



- Google Translate is a cloud service provided by Google Inc, it offers instant translation of your scanned copy. To use this cloud feature, internet connection is required.
- If it fails to recognize the text, check whether the language you selected is valid. Go to [Options] → [Settings] → [Text Recognition] and check the language set in the right pane. The OCR function restarts whenever the language is changed or the text recognition range is modified in edit mode.

SHARING FUNCTION: FACEBOOK, TWITTER

Zcan Wireless supports cloud services like Facebook, Twitter, Flickr.. etc. Click [Share] button, four options are displayed. When you use this function for the first time, you will be asked to authenticate your account. Once the authentication is complete, you can use these services with your account.



NOTE:

- Facebook, Twitter or Flickr: Click related icon to share your images on the Web. In the upload window, enter the name of the image and click the [Post] button. Once uploading is complete, the View posted image on window appears. To check whether the upload is successful or not, click [Show post on] to see the uploaded image in the application. If you don't have an account with the service you want to use, sign up on their website first.
- E-mail: Click the [Mail] icon to attach an image as a JPG file to the added email application. For sharing by Mail function, it cannot be used for web-based e-mail, only for Microsoft mail client, e.g. Outlook or Live Mail.
- If you don't want to use some of the cloud services, you can go to [Options] → [Settings] → [Manage Apps] . Disable the service you do not need.
- Do not open multiple applications at the same time.
- Sending notes to Evernote and sharing on Facebook/ Twitter/ Flickr require internet connection and valid accounts.