



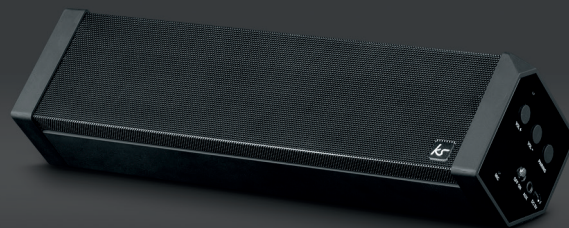
KITSOUND

BOOMBAR 2 WIRELESS SPEAKER



kitsound.co.uk

USER MANUAL



Do not dispose of Lithium-ion
batteries with general waste.
Please return it to battery
recycling collection point.

JB.3053 / Made in China. © KitSound™ 2014
Christchurch, Dorset. BH23 4FL



We are craftspeople. We are musicians.

We are KitSound™

And we all commit ourselves to achieving
one shared goal: Bringing people closer to
their music. By truly understanding music we
stay true to its craft. Pure, rich, incredible sound.

We'll settle for nothing less.



At KS we believe your music deserves to be showcased on great quality products that don't cost the earth. We might not all share the same taste in music (the ferocious disputes on music forums prove that), but whether it's Irish folk, death metal or any number of obscure genres which seem to be multiplying by the minute, the artists responsible for connecting with you through their craft have bared their souls to do so. And we think that's worth celebrating.



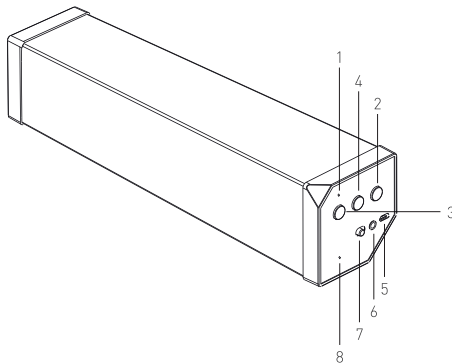


Box contents:

- KS BoomBar 2 wireless speaker
- Charge cable
- 3.5 mm to 3.5 mm audio cable
- Carry case
- User manual

Functions:

1. Bluetooth indicator light
2. Play/Pause/Pairing button
3. Volume up/Next track button
4. Volume down/Previous track button
5. USB charging port
6. Aux-in port
7. ON/OFF switch
8. Built-in microphone



Instructions for use

Charging the speaker

It is recommended that you give the speaker a full charge before its first use.

1. Plug the micro USB end of the charge cable into the speaker
2. Plug the standard USB cable end into either a computer or a USB mains charger
3. The ON/OFF switch will be orange whilst charging
4. When charging is complete, the orange light will go out

Note: It may take up to 6 hours before the speaker is fully charged. Please allow up to 10 hours for the first charge.

Pairing the speaker to your device

Before you can use the speaker via Bluetooth, it will need to be paired to your device.

To do this:

1. Slide the power switch to the 'ON' position
2. After 6 seconds, the speaker should automatically enter pairing mode
3. The Bluetooth indicator light will be flashing blue quickly
4. Turn your device's Bluetooth ON and search for new devices
5. When the BoomBar 2 appears in the list, select it and if asked for a passcode, enter '0000'
6. The speaker should then be paired to your device

[continued...]





[...continued] Pairing the speaker to your device

Note: Pairing mode will be active for 3 minutes. After this, the light will turn a solid blue. To re-activate pairing mode, either turn the speaker off then on again, or press and hold the 'Pairing' button until the light starts flashing again.

To pair additional devices to the speaker, first make sure the Bluetooth on any devices that have already been paired to the speaker has turned off. Then follow the above instructions from step 1.

Playing music on your speaker

Bluetooth

If already connected to the speaker via Bluetooth, simply find and play the music on your device and the sound will play through the speaker. Some devices may require you to select the audio output. You should be able to do this by going to the 'Listen via' or 'Play via' menu. If unsure, please refer to your device's manual.

If you are using an A2DP Bluetooth-enabled device, you will be able to use the following functions on the speaker:

- Play/Pause (2) – Short press
- Next track (3) – Short press
- Previous track (4) – Short press

Auxiliary

Using the provided cable, you can connect your device directly to the speaker.

To use this, simply:

- Slide the power switch to the 'ON' position (7)
- Plug the cable into the speaker's Aux-in port (6) and your device
- Press play on your device

When playing music using the cable, you will not be able to use the Play/Pause, Next track and Previous track functions or change the volume on the speaker.

Changing the volume

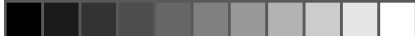
Bluetooth

This can be done on both the device you are playing music from and on the speaker. To change the volume on the speaker, press and hold (do not short press otherwise it will skip track) the Volume + (3) or Volume – (4) button.

Auxiliary

Volume controls are disabled on the speaker when connected via auxiliary. The volume can only be changed on the device playing audio.

[continued...]



[...continued] Changing the volume

Please note

Your device will have an internal amplifier and if it is playing digital files like MP3s it will also have an integrated DAC (Digital Audio Converter). If you turn the volume up to 100%, your device will be sending a distorted signal. To avoid this, and to get the best quality from the speaker, we recommend that you do not run your device any higher than 95% volume. Some devices output higher than others, so you may need to reduce the volume if you experience distortion.

Hands-free

The speaker comes equipped with a microphone so you can take phone calls whilst connected. Should you receive an incoming phone call, the Play/Pause button (2) becomes an Answer/End call button. If you receive a call whilst music is playing, press the Play/Pause button to answer. To end the call, press the Play/Pause button again and your music should resume playing (dependant on device).

Care for your BoomBar 2

Please DON'T:

- Get the BoomBar 2 wet
- Drop the BoomBar 2 as this will invalidate your warranty
- Open up the BoomBar 2. There are no user serviceable parts inside
- Expose the BoomBar 2 to extreme temperatures or rapid changes of hot to cold or vice versa

Please DO:

- Clean the BoomBar 2 with a soft dry cloth and no detergents

Specifications

S/N	65 dB
Bluetooth	V2.1 A2DP, AVRCP
Bluetooth range	up to 10 m
Frequency response	60 Hz – 20 kHz
Drivers	2 x 50 mm
Output RMS	2 x 5 W @ 2 ohm
Play time	up to 10 hours
Charging time	up to 4 hours

Troubleshooting

We hope you've now got all the information you need to get started, but if you're having problems with anything, please feel free to contact us at: support@kitsound.co.uk

We apologise for any inconvenience caused by minor inconsistencies in these instructions, which may occur as a result of product improvement and development.

1.FCC Statement

1. This device complies with Part 15 of the FCC Rules. Operation is subject to the following two conditions:

(1) This device may not cause harmful interference.

(2) This device must accept any interference received, including interference that may cause undesired operation.

2. Changes or modifications not expressly approved by the party responsible for compliance could void the user's authority to operate the equipment.

NOTE:

This equipment has been tested and found to comply with the limits for a Class B digital device, pursuant to Part 15 of the FCC Rules. These limits are designed to provide reasonable protection against harmful interference in a residential installation.

This equipment generates uses and can radiate radio frequency energy and, if not installed and used in accordance with the instructions, may cause harmful interference to radio communications. However, there is no guarantee that interference will not occur in a particular installation. If this equipment does cause harmful interference to radio or television reception, which can be determined by turning the equipment off and on, the user is encouraged to try to correct the interference by one or more of the following measures:

Reorient or relocate the receiving antenna.

Increase the separation between the equipment and receiver.

Connect the equipment into an outlet on a circuit different from that to which the receiver is connected.

Consult the dealer or an experienced radio/TV technician for help.