



深圳市星源创科技有限公司

SHENZHEN Xingyuanchuang TECHNOLOGY CO., LTD

天线测试报告

Antenna Test Report

TC: 忆博通

MN: T825-P3

RF: 关巍

MD: 黄清清

MP: 15112592483

Date: 2023. 08. 10

REV :V1. 0



ANTENNA

深圳市星源创科技有限公司

SHENZHEN Xingyuanchuang TECHNOLOGY CO., LTD

测试信息

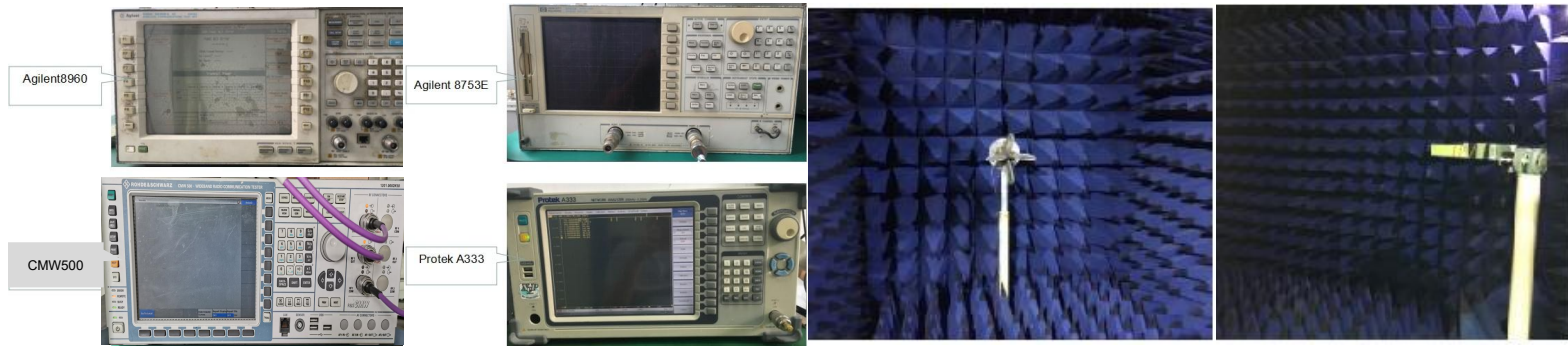
Test information

	Antenna band	Antenna state	Antenna form	Match changes	Note
Main ANT	2G	850/900/1800/1900			
	3G	2/4/5	FPC	PIFA	NO
	4G	2/4/5/12/17/66/71/41			
AUX ANT	BT/WIFI	2.4/5.8G	FPC	PIFA	NO
	GPS	1.575G	FPC	PIFA	NO
	DIV		FPC	PIFA	NO

测试环境

Test environment

	测试项目	测试设备
S参数 (S-parameter)	1. 电压驻波比 (VSWR) 2. 回波损耗 (Rrtun Loss)	网络分析仪: Agilent8753ES
2. 有源测试 (Active)	1. 发射功率 (TRP) 2. 接收灵敏度 (TIS) 3. 屏灭/屏亮	1. 暗室: 5*3*3m (3D) Chamber 2. 综测仪: Agilent8960 CMW500
3. 无源测试 (Passive)	1. 天线增益 (Gain) 2. 天线效率 (Efficiency)	1. 暗室: 5*3*3m (3D) Chamber 2. 网络分析仪: Agilent 8753ES





天线位置

Antenna position



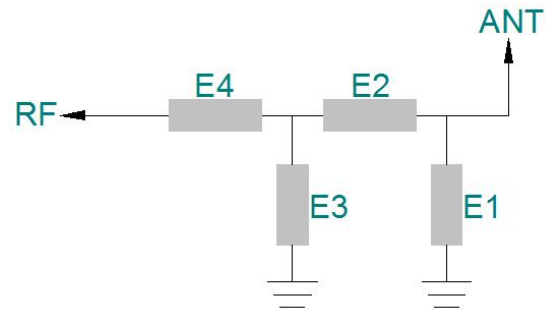


ANTENNA

深圳市星源创科技有限公司

SHENZHEN Xingyuanchuang TECHNOLOGY CO., LTD

匹配电路
Matching circuit



匹配电路原理图&位号图

	电容 (PF)	电感 (NH)
E1(0402)		
E2(0402)		
E3(0402)		
E4(0402)		



主板传导数据 Conduction data

2G/3G									
Band	GSM850	GSM900	DCS1800	PCS1900	WCDMA1	WCDMA2	WCDMA4	WCDMA5	WCDMA8
TX(dBm)	30.4	30.2	28.4	28.2		22.1	22.1	22.4	
RX(dBm)	-108	-108	-108	-108		-108	-108	-108	
4G FDD/TDD									
Band	B1	B2	B3	B4	B5	B7	B8	B12	B17
TX(dBm)		21.5		21.4	21.5			21.8	22
RX(dBm)		-97		-96	-95			-95	-95
Band	B28	B18	B66	B71	B34	B38	B39	B40	B41
TX(dBm)			21.5	21.8					24
RX(dBm)			-97	-97					-92.5



有源测试数据 Active test data

2G												
Band	GSM850			GSM900			GSM-1800(DCS)			GSM-1900(PCS)		
Channel	128	192	251	1	62	124	512	698	885	512	660	810
TRP(dBm)	25.17	25.55	26.27	26.36	25.82	25.32	25.14	25.57	25.12	26.39	26.31	25.32
TIS(LCD OFF)	-103.23	-103.42	-103.52	104.22	-104.31	-104.46	=104.63	-105.24	-105.47	-104.55	-105.31	-105.36
TIS(LCD ON)												
3G												
Band	WCDMA-1			WCDMA-4			WCDMA-2			WCDMA-5		
Channel	10562	10700	10838	1537	1675	1738	9662	9800	9938	4357	4400	4458
TRP(dBm)				19.26	19.23	19.2	18.57	18.47	18.53	17.24	16.57	16.22
TIS(LCD OFF)				-104.56	-105.33	-105.55	-105.42	-105.47	-105.8	-103.53	-102.66	-102.36
TIS(LCD ON)												
4G(FDD 10M)												
Band	FDD-Band 2			FDD-Band 4			FDD-Band 5			FDD-Band 12		
Channel	18650	18900	19150	20000	20175	23050	20450	20525	20600	23060	23095	23130
TRP(dBm)	18.57	18.53	18.33	18.42	18.48	18.67	17.72	17.67	17.74	17.38	17.52	17.43
TIS(LCD OFF)	-92.33	-92.24	-92.45	-92.43	-92.36	-92.31	-89.55	-89.64	-90.1	-90.53	-90.67	-91.64
TIS(LCD ON)												
Band	FDD-Band 17			FDD-Band 66			FDD-Band 71					
Channel	23780	23790	23800	132022	132322	132622	133172	133297	133422			
TRP(dBm)	16.76	17.15	17.47	19.3	19.48	19.35	17.43	17.57	17.68			
TIS(LCD OFF)	-90.44	-90.51	-91.65	-91.42	-91.63	-92.22	-88.11	-88.14	-88.16			
TIS(LCD ON)												
4G(TDD 20M)												
Band	FDD-Band 38			FDD-Band 39			FDD-Band 40			FDD-Band 41		
Channel	37850	38000	38150	38350	38450	38550	38750	39150	39550	39750	40620	41490
TRP(dBm)										21.61	21.87	19.57
TIS(LCD OFF)										-90.1	-90.23	-90.32
TIS(LCD ON)												



ANTENNA

GPS搜星测试 GPS star search test

GPS冷启动实测效果以下：
CN值40以上3颗
CN值35以上10颗
实际定位14颗

备注：
GPS搜星测试。会因时间段
及地域而存在差异。以上数
据为我司测试（空旷地带）
最佳数据





ANTENNA

Wifi天线实测

Wifi Antenna test

测试环境：开放空间

测试距离：10m

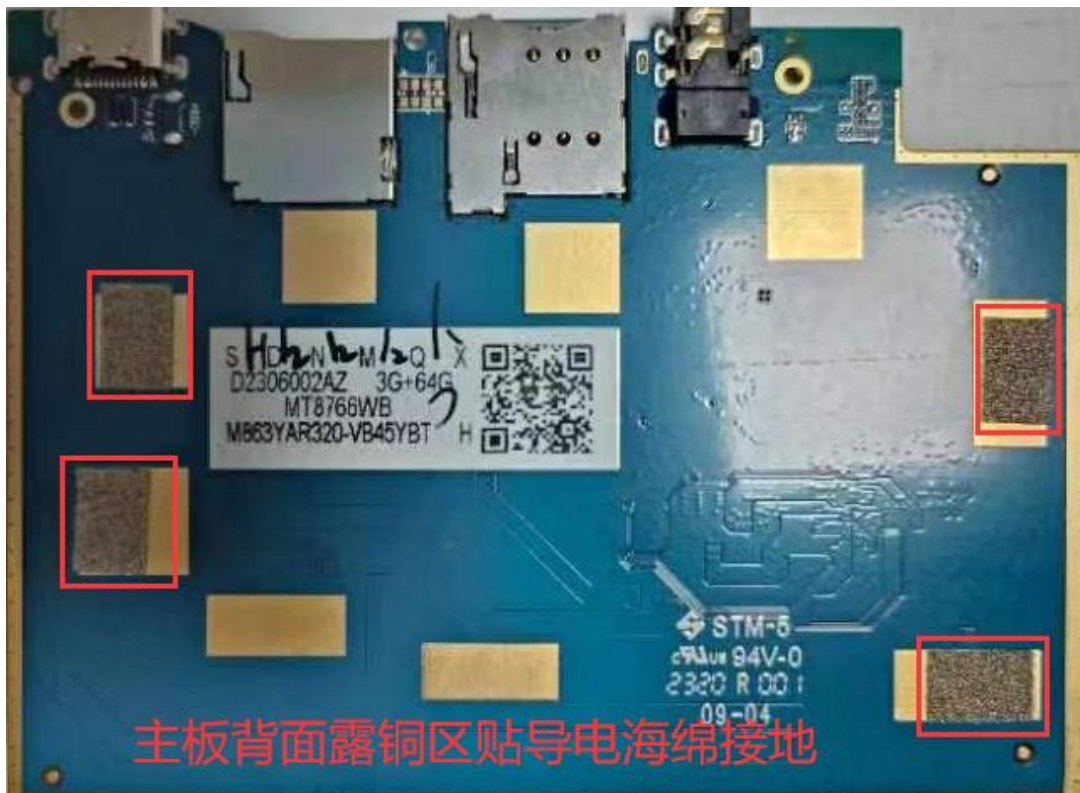
测试结果如右图





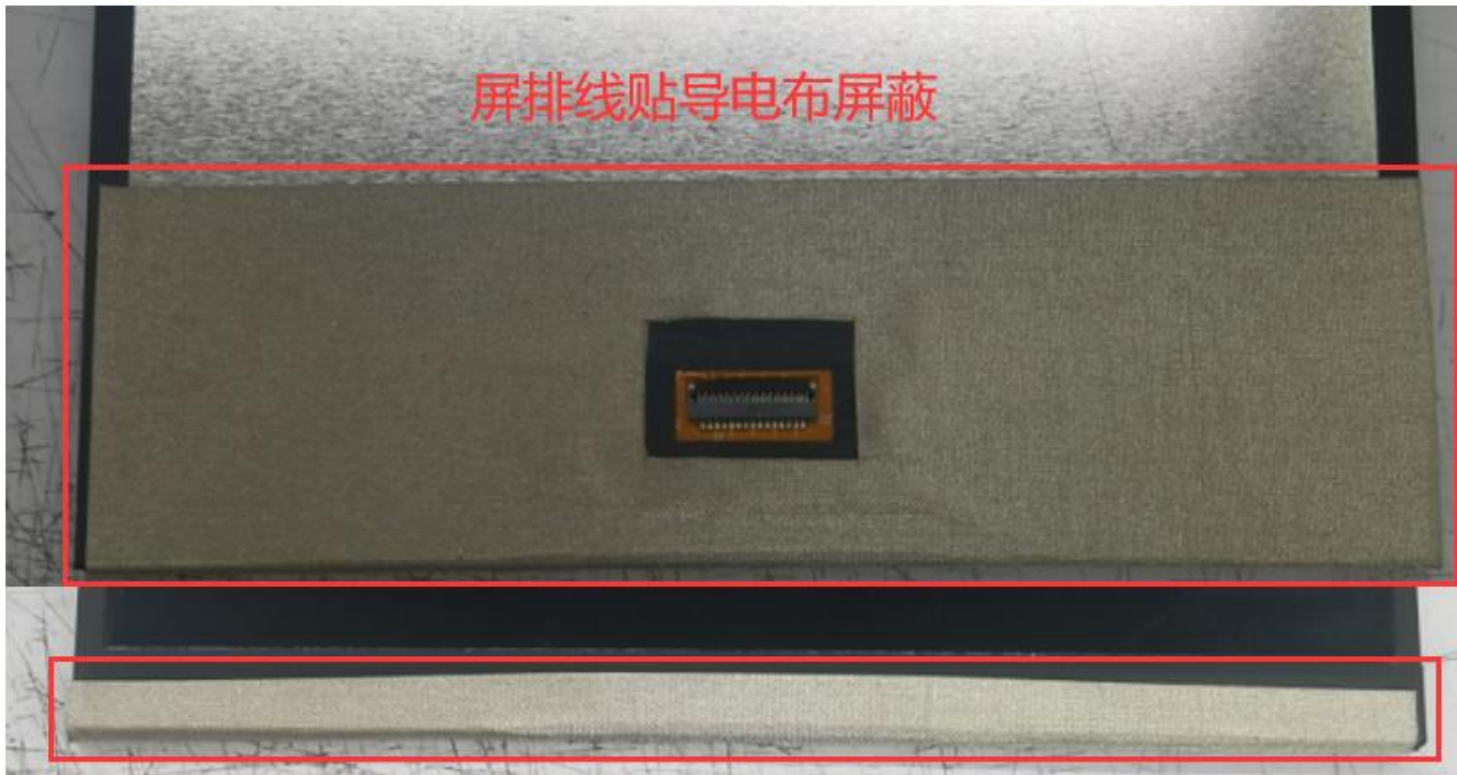
环境处理

Environmental treatment



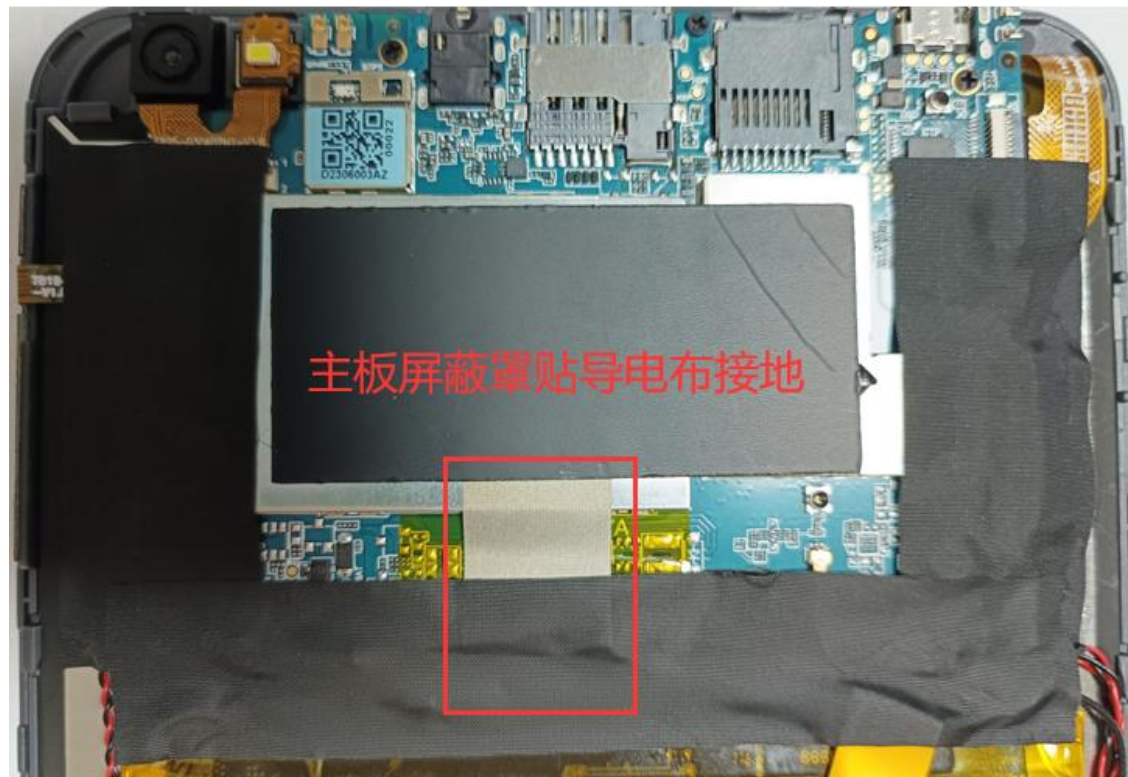
环境处理

Environmental treatment



环境处理

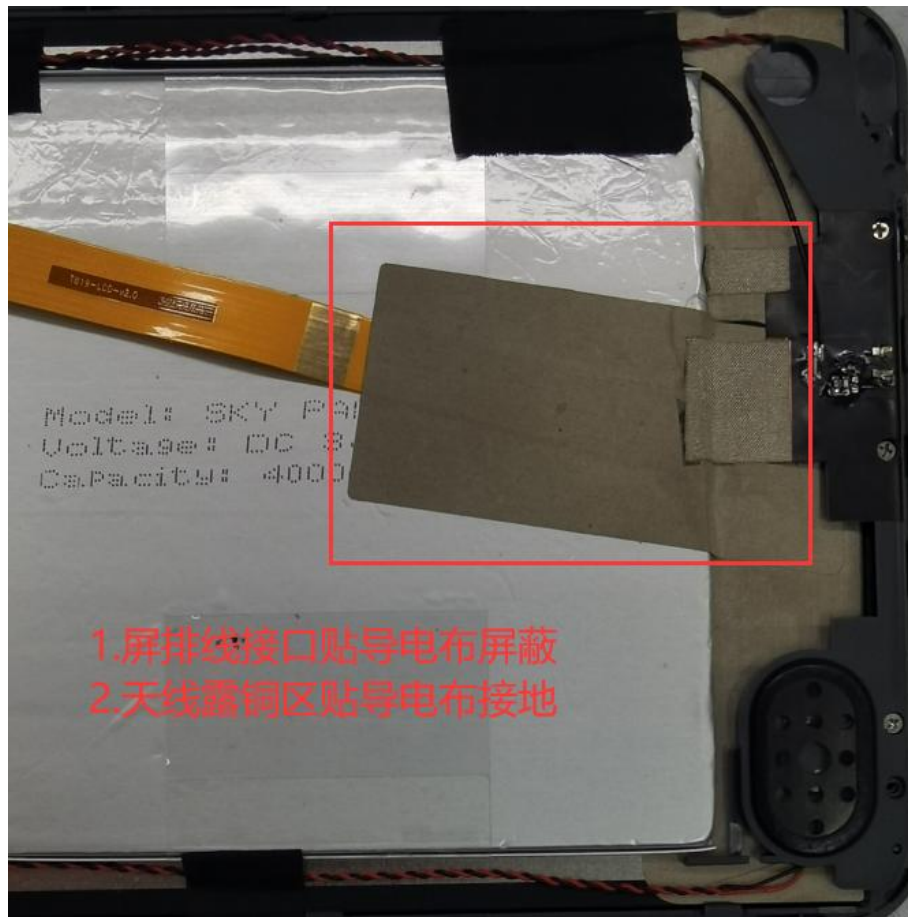
Environmental treatment





环境处理

Environmental treatment





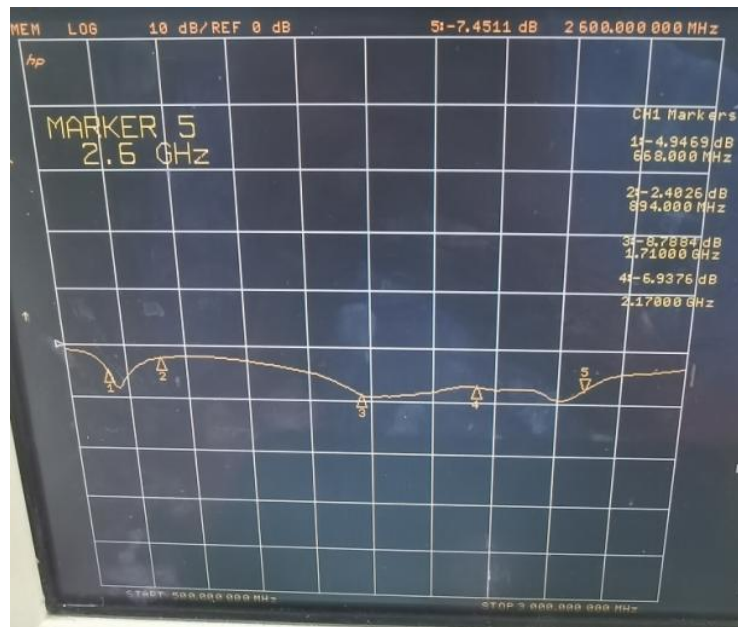
ANTENNA

深圳市星源创科技有限公司

SHENZHEN Xingyuanchuang TECHNOLOGY CO., LTD

Main ANT 无源测试数据 Main ANT Passive test data

ANT S11-VSWR&Return Loss



Frequency(MHZ)	668	894	1710	2170	2600
VSWR	3.65	7.28	2.14	2.63	2.47
Return Loss(DB)	-4.94	-2.40	-8.78	-6.93	-7.45



无源测试数据 Passive test data

ANT Direction of figure 690-2690MHz

Passive Test For L												
Freq (MHz)	Effi (%)	Effi (dB)	Gain (dBi)	Gain (dEd)	UHS (%)	DHIS (%)	Max (dB)	Min (dB)	irectivity (dBi)	Beamwidth (3dB)	AttH (dB)	AttV (dB)
650	26.02	-5.85	-2.51	-4.66	13.695	12.321	-2.51	-12.83	3.34	60	39.51	39.08
660	28.29	-5.48	-2.64	-4.79	14.859	13.434	-2.64	-13.22	2.84	60	39.76	39.23
670	28.06	-5.52	-2.25	-4.4	14.495	13.564	-2.25	-12.39	3.27	60	39.56	38.96
680	27.88	-5.55	-2.27	-4.42	14.116	13.761	-2.27	-13.13	3.28	60	38.97	38.54

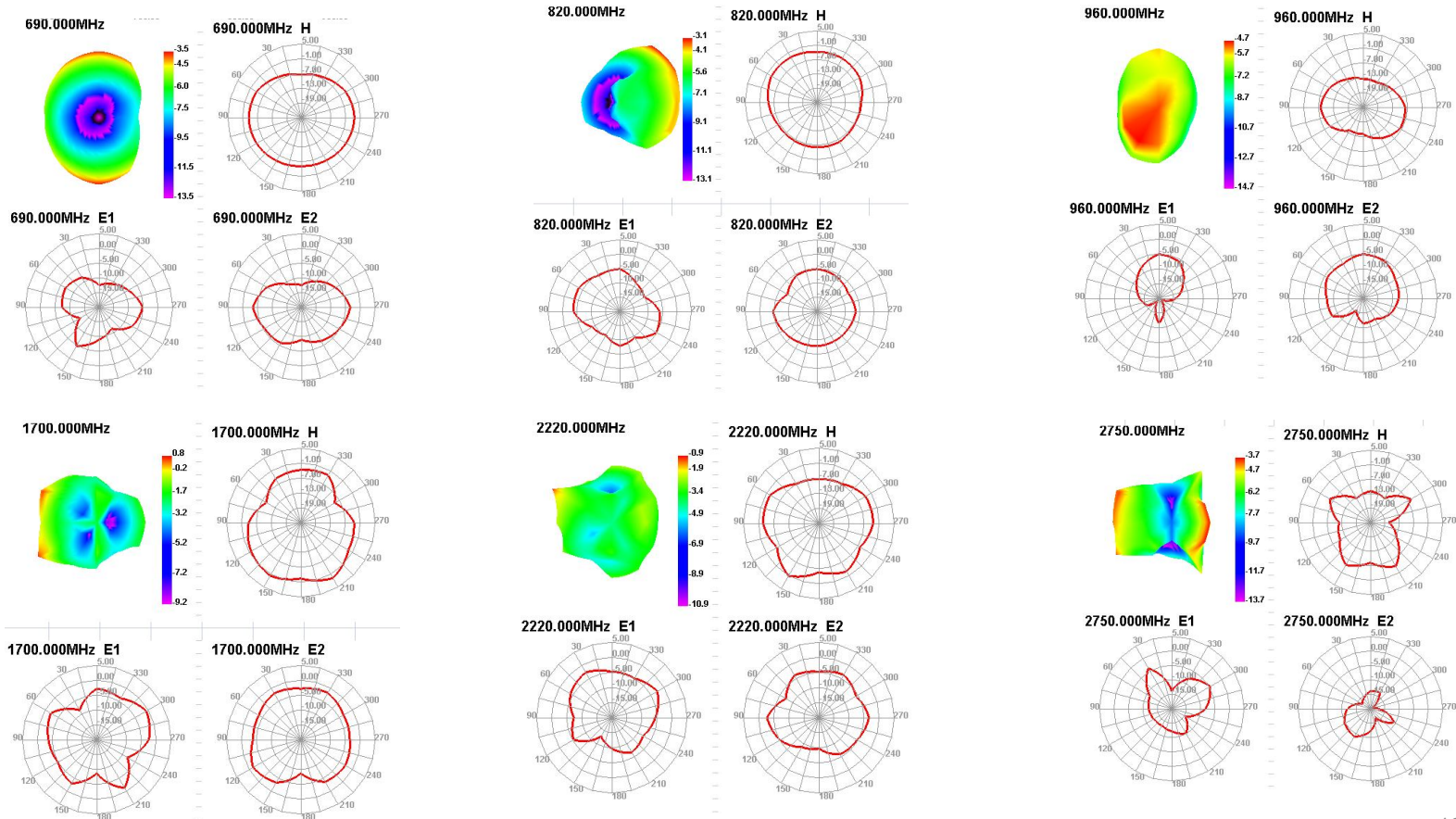
Passive Test For 低频												
Freq (MHz)	Effi (%)	Effi (dB)	Gain (dBi)	Gain (dEd)	UHS (%)	DHIS (%)	Max (dB)	Min (dB)	irectivity (dBi)	Beamwidth (3dB)	AttH (dB)	AttV (dB)
690	22.28	-6.52	-3.46	-5.61	10.147	12.13	-3.46	-12.63	3.06	0	38.39	38.05
700	23.76	-6.24	-3.37	-5.52	10.789	12.978	-3.37	-13.83	2.87	30	37.95	37.71
710	27.76	-5.87	-2.64	-4.79	12.951	14.813	-2.64	-14.15	2.92	30	38.33	38.1
720	31.28	-5.05	-2.23	-4.38	15.201	16.08	-2.23	-12.74	2.82	30	38.12	37.78
730	31.61	-5	-2.01	-4.16	15.542	16.067	-2.01	-11.29	2.99	60	37.95	37.51
740	28.65	-5.48	-2.34	-4.49	13.944	14.711	-2.34	-10.8	3.09	60	37.21	36.99
750	28.14	-5.39	-2.31	-4.46	14.201	14.937	-2.31	-10.44	3.05	60	37.03	36.95
760	27.99	-5.53	-2.64	-4.79	13.639	14.35	-2.64	-10.92	2.89	60	36.73	36.72
770	22.11	-6.55	-3.68	-5.83	10.63	11.481	-3.68	-12.58	2.88	30	35.81	35.92
780	20.48	-6.89	-4.02	-6.17	9.738	10.744	-4.02	-13.18	2.87	60	35.67	35.88
790	20.48	-6.89	-4	-6.15	9.972	10.507	-4	-12.41	2.88	60	35.94	36.19
800	26.36	-5.79	-2.85	-5	13.532	12.829	-2.85	-9.94	2.94	90	36.77	36.98
810	26.91	-5.7	-2.52	-4.67	14.313	12.6	-2.52	-9.48	3.18	90	36.63	36.88
820	23.24	-6.34	-3.08	-5.23	12.603	10.639	-3.08	-10.4	3.26	90	36.69	36.92
830	22.15	-6.55	-3.2	-5.35	12.408	9.742	-3.2	-11.58	3.34	90	36.46	36.76
840	22.44	-6.49	-3.19	-5.34	13.038	9.405	-3.19	-12.4	3.3	90	36.63	37.05
850	23.42	-6.31	-3.1	-5.25	13.846	9.569	-3.1	-12.91	3.2	90	36.69	37.16
860	23.93	-6.21	-3.02	-5.17	14.027	9.898	-3.02	-12.57	3.19	90	36.82	37.25
870	20.56	-6.87	-3.67	-5.82	11.895	8.662	-3.67	-13.99	3.2	90	36.68	37.07
880	19.14	-7.18	-4.03	-6.18	11.252	7.892	-4.03	-14.74	3.15	30	36.82	37.19
890	19.17	-7.06	-3.34	-5.49	11.976	7.693	-3.34	-15.77	3.72	60	37	37.41
900	17.1	-7.67	-3.59	-5.74	10.853	6.249	-3.59	-18.22	4.07	60	37.06	37.58

Passive Test For 高频												
Freq (MHz)	Effi (%)	Effi (dB)	Gain (dBi)	Gain (dEd)	UHS (%)	DHIS (%)	Max (dB)	Min (dB)	irectivity (dBi)	Beamwidth (3dB)	AttH (dB)	AttV (dB)
1710	42.65	-3.7	0.18	-1.97	21.593	21.059	0.18	-12.59	3.88	30	42.52	42.01
1720	40.99	-3.87	0.17	-1.98	21.089	19.906	0.17	-12.39	4.04	30	42.4	41.88
1730	44.78	-3.49	0.63	-1.52	23.299	21.48	0.63	-11.85	4.12	30	42.83	42.29
1740	50.15	-3	0.99	-1.16	26.187	23.963	0.99	-11.07	3.99	30	42.89	42.17
1750	49.26	-3.08	0.59	-1.56	25.393	23.865	0.59	-10.65	3.66	0	42.92	42.22
1760	43.8	-3.58	0.04	-2.11	22.492	21.312	0.04	-11.09	3.63	30	43.13	42.41
1770	51.01	-2.92	0.68	-1.47	26.151	24.861	0.68	-10.58	3.61	30	43.26	42.64
1780	57.75	-2.38	1.24	-0.91	29.819	27.93	1.24	-10.32	3.63	30	43.6	43.04
1790	52.44	-2.8	0.86	-1.29	27.037	25.402	0.86	-10.34	3.66	30	43.12	42.67
1800	49.06	-3.09	0.56	-1.59	25.318	23.742	0.56	-10.45	3.66	30	42.97	42.55
1810	47.84	-3.2	0.47	-1.68	24.842	22.994	0.47	-10.8	3.67	0	42.94	42.49
1820	54.6	-2.63	1.11	-1.04	28.644	25.961	1.11	-9.8	3.73	0	43.24	42.77
1830	50.94	-2.93	0.84	-1.31	26.855	24.08	0.84	-10.35	3.77	0	43.09	42.62
1840	50.96	-2.93	0.95	-1.2	26.605	24.359	0.95	-9.88	3.88	0	43.08	42.67
1850	58.85	-2.3	1.46	-0.69	30.485	28.364	1.46	-9.32	3.76	0	43.4	43.05
1860	55.61	-2.55	1.05	-1.1	29.139	26.473	1.05	-10.04	3.59	0	43.4	43.07
1870	49.76	-3.03	0.57	-1.58	26.211	23.548	0.57	-10.56	3.61	0	43.15	42.96
1880	53.48	-2.72	0.85	-1.3	28.231	25.248	0.85	-10.05	3.57	0	43.26	43.08
1890	50.86	-2.94	0.55	-1.6	26.589	24.273	0.55	-10.09	3.49	0	42.84	42.68
1900	46.54	-3.32	0.19	-1.96	24.469	22.071	0.19	-10.96	3.51	0	42.94	42.77
1910	44.47	-3.52	0.07	-2.08	23.346	21.112	0.07	-11.34	3.59	0	42.87	42.69
1920	48.37	-3.15	0.56	-1.59	25.447	22.924	0.56	-10.82	3.71	0	42.9	42.78
1930	49.57	-3.05	0.65	-1.5	25.832	23.737	0.65	-10.21	3.7	0	43.03	42.87
1940	44.62	-3.5	0.29	-1.86	23.084	21.533	0.29	-10.53	3.79	0	42.93	42.71
1950	43.36	-3.63	0.29	-1.86	22.554	20.807	0.29	-11.11	3.92	0	42.85	42.64
1960	40.23	-3.95	0.11	-2.04	21.069	19.164	0.11	-12.02	4.07	0	42.95	42.68
1970	38.64	-4.13	0.07	-2.08	20.2	18.441	0.07	-12.04	4.2	0	42.9	42.76
1980	42.47	-3.72	0.64	-1.51	21.835	20.633	0.64	-11.15	4.36	0	43.15	43.1
1990	38.05	-4.2	0.39	-1.76	19.133	18.918	0.39	-11.81	4.59	0	43.17	43.1
2000	37.38	-4.27	0.38	-1.77	18.687	18.692	0.38	-12.27	4.66	0	43.48	43.38
2010	38.81	-4.11	0.53	-1.62	19.465	19.348	0.53	-12.34	4.64	0	43.5	43.33
2020	38.04	-4.2	0.26	-1.89	19.271	18.772	0.26	-12.4	4.45	0	43.39	43.21
2030	35.8	-4.46	-0.05	-2.2	17.951	17.85	-0.05	-12.31	4.41	0	43.28	43.09
2040	33.09	-4.8	-0.36	-2.51	16.406	16.686	-0.36	-12.36	4.44	0	43.43	43.26
2050	38.95	-4.1	0.18	-1.97	19.814	19.131	0.18	-11.52	4.27	0	43.79	43.65
2060	37.87	-4.22	-0.22	-2.37	19.836	18.036	-0.22	-11.62	3.99	0	43.67	43.53
2070	34.63	-4.61	-0.72	-2.87	18.309	16.324	-0.72	-11.89	3.89	0	43.99	43.83
2080	38.82	-4.11	-0.15	-2.3	20.207	18.611	-0.15	-11.16	3.96	0	44.24	44.1
2090	45.19	-3.45	0.55	-1.6	23.362	21.831	0.55	-11.15	4	0	44.64	44.47
2100	43.96	-3.57	0.4	-1.75	23.119	20.84	0.4	-12.51	3.97	120	44.77	44.61
2110	37.81	-4.22	-0.07	-2.22	19.754	18.056	-0.07	-13.38	4.15	120	44.45	44.27

2120	34.28	-4.65	-0.42	-2.57	17.729	16.554	-0.42	-13.52	4.23	120	44.21	44.07
2130	33.34	-4.77	-0.55	-2.7	16.954	16.382	-0.55	-13.45	4.22	120	43.73	43.61
2140	31.99	-4.95	-0.79	-2.94	16.392	15.594	-0.79	-13.99	4.16	120	43.94	43.93
2150	31.51	-5.01	-0.92	-3.07	16.609	14.905	-0.92	-14.87	4.09	120	43.93	43.95
2160	31.01	-5.09	-1.12	-3.27	16.501	14.507	-1.12	-14.58	3.96	120	44.05	44.08
2170	32.97	-4.82	-0.92	-3.07	17.536	15.43	-0.92	-13.2	3.9	0	44.22	44.25
2570	34.18	-4.86	-0.45	-2.6	20.552	13.63	-0.45	-14.34	4.21	30	46.03	46.19
2580	29.38	-5.32	-1.07	-3.22	17.706	11.674	-1.07	-15.23	4.25	30	46.01	46.21
2590	26.17	-5.82	-1.53	-3.68	15.626	10.543	-1.53	-16.29	4.29	30	45.73	45.95
2600	28.53	-5.45	-1.1	-3.25	16.914	11.615	-1.1	-15.8	4.35	30	46.04	46.24
2610	27.15	-5.86	-1.34	-3.49	16.07	11.076	-1.34	-15.61	4.33	30	45.99	46.22
2620	23.68	-6.26	-1.96	-4.11	14.13	9.551	-1.96	-15.93	4.3	30	45.99	46.17
2630	23.65	-6.26	-1.9	-4.05	14.05	9.6	-1.9	-15.66	4.36	30	45.98	46.18
2640	22.61	-6.46	-2.01	-4.16	13.345	9.261	-2.01	-16.21	4.45	30	46.5	46.72
2650	23.32	-6.32	-1.91	-4.06	13.745	9.57	-1.91	-17.14	4.42	30	46.45	46.68
2660	22.97	-6.39	-1.94	-4.09	13.86	9.312	-1.94	-18.14	4.45	0	46.66	46.86
2670	20.17	-6.95	-2.42	-4.57	12.018	8.153	-2.42	-18.96	4.53	0	46.65	46.3
2680	17.71	-7.52	-2.8	-4.95	10.547	7.162	-2.8	-19.23	4.71	0	46.69	46.87
2690	17.57	-7.55	-2.75	-4.9	10.403	7.165	-2.75	-19.01	4.8	0	46.47	46.69

无源测试数据 Passive test data

ANT Direction of figure 690-2690MHz





无源测试数据

Passive test data

ANT1 S11-VSWR&Return Loss



Frequency(MHZ)	1575	2400	2500	5150	5850
VSWR	2.05	1.65	1.64	2.60	2.41
Return Loss(DB)	-9.25	-12.17	-12.25	-7.83	-7.64



无源测试数据
Passive test data

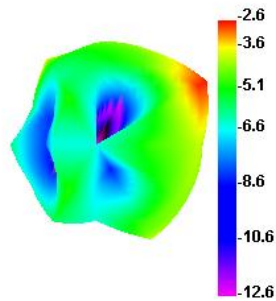
ANT1 GAIN&Efficiency-GPS

1570	24.58	-6.09	-2.59	-4.74	10.92	13.663	-2.59	-16.86	3.51	90	41.5	41.03
1575	24.18	-6.17	-2.61	-4.76	10.74	13.44	-2.61	-17.19	3.55	90	41.68	41.23
1580	24.91	-6.04	-2.44	-4.59	11.084	13.829	-2.44	-18.49	3.59	90	41.78	41.35

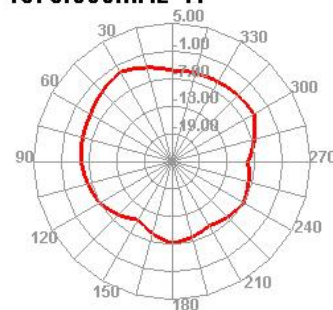
无源测试数据
Passive test data

ANT1 Direction of figure(GPS)

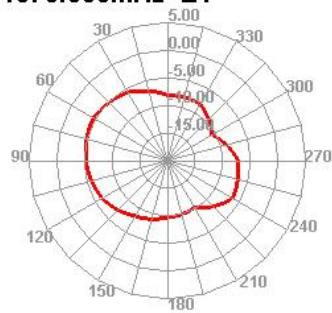
1575.000MHz



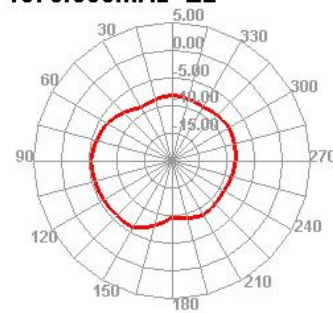
1575.000MHz H



1575.000MHz E1



1575.000MHz E2





无源测试数据
Passive test data

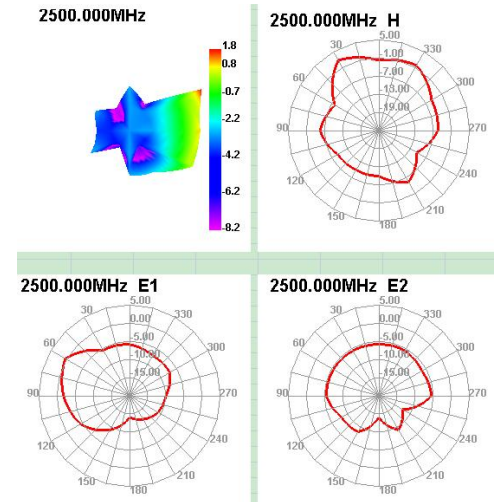
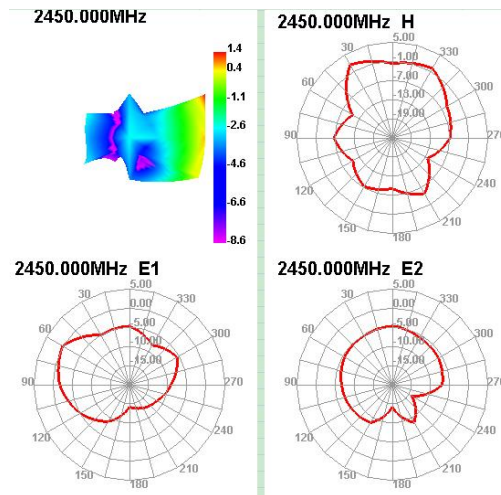
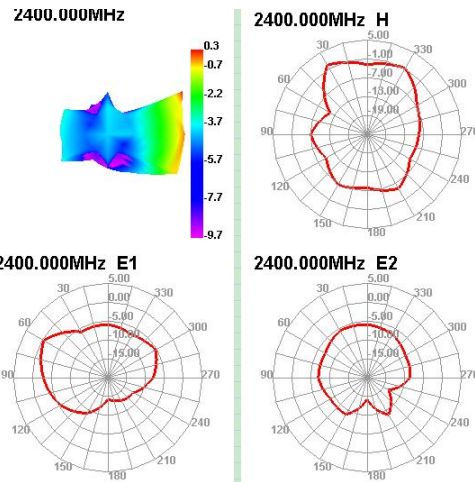
ANT1 GAIN&Efficiency-WIFI2.4G/BT

Passive Test For WIFI2.4

Freq (MHz)	Effi (%)	Effi (dB)	Gain (dBi)	Gain (dBd)	UHS (%)	DHS (%)	Max (dB)	Min (dB)	Directivity (dBi)	Beamwidth (3dB)	AttH (dB)	AttV (dB)
2400	24.44	-6.12	0.3	-1.85	14.262	10.176	0.3	-14.34	6.42	30	45.78	46.01
2410	24.89	-6.04	0.44	-1.71	14.686	10.202	0.44	-14.75	6.48	30	46.01	46.29
2420	25.66	-5.91	0.65	-1.5	15.278	10.384	0.65	-14.76	6.56	30	45.73	46
2430	25.08	-6.01	0.64	-1.51	14.926	10.149	0.64	-15.32	6.65	30	46.01	46.36
2440	26.1	-5.83	0.9	-1.25	15.237	10.86	0.9	-14.97	6.73	30	46.12	46.48
2450	28.43	-5.46	1.42	-0.73	16.36	12.071	1.42	-14.3	6.88	30	46.12	46.54
2460	28.76	-5.41	1.55	-0.6	16.397	12.359	1.55	-14.23	6.96	30	46.14	46.52
2470	27.54	-5.6	1.49	-0.66	15.652	11.889	1.49	-14.23	7.09	30	46.4	46.8
2480	29.45	-5.31	1.8	-0.35	16.601	12.85	1.8	-13.68	7.11	30	46.26	46.64
2490	32.01	-4.95	2.16	0.01	17.887	14.121	2.16	-13.54	7.1	30	46.51	46.91
2500	29.12	-5.36	1.8	-0.35	16.327	12.793	1.8	-14.12	7.16	30	46.47	46.86

无源测试数据
Passive test data

ANT1 Direction of figure (2.4/BT)





ANTENNA

深圳市星源创科技有限公司

SHENZHEN Xingyuanchuang TECHNOLOGY CO.,LTD

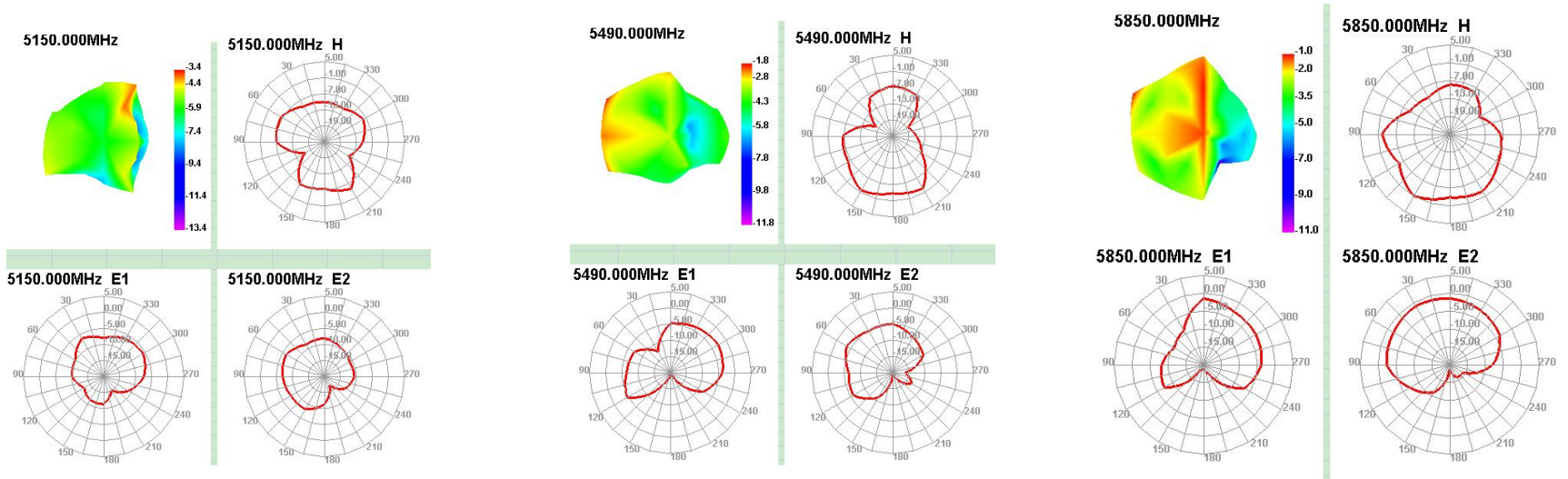
无源测试数据
Passive test data

ANT1 GAIN&Efficiency-WIFI 5G

Passive Test For WIFI5G												
Freq (MHz)	Effi (%)	Effi (dB)	Gain (dBi)	Gain (dBd)	UHS (%)	DHS (%)	Max (dB)	Min (dB)	irectivity (dBi)	Beamwidth (3dB)	AttH (dB)	AttV (dB)
5150	15.04	-8.23	-3.38	-5.53	8.949	6.091	-3.38	-20.62	4.84	120	49.82	49.4
5170	13.29	-8.76	-4.03	-6.18	7.793	5.498	-4.03	-22.49	4.73	120	50.13	49.77
5190	15.52	-8.09	-3.65	-5.8	9.014	6.504	-3.65	-22.05	4.44	60	50.42	49.95
5210	15.16	-8.19	-3.7	-5.85	8.55	6.614	-3.7	-21.88	4.49	60	50.88	50.49
5230	15.61	-8.06	-3.24	-5.39	8.538	7.077	-3.24	-20	4.82	60	50.42	50.08
5250	17.45	-7.58	-2.78	-4.93	9.466	7.98	-2.78	-21.1	4.8	60	51.02	50.72
5270	17.86	-7.48	-2.28	-4.43	9.684	8.178	-2.28	-20.69	5.2	60	50.85	50.6
5290	19.38	-7.13	-2.12	-4.27	10.42	8.96	-2.12	-21.16	5	60	51.34	51.12
5310	16.33	-7.87	-2.71	-4.86	8.73	7.603	-2.71	-21.11	5.16	60	50.44	50.36
5330	17.89	-7.47	-1.95	-4.1	9.59	8.301	-1.95	-20.34	5.52	90	51.08	51.01
5350	16.96	-7.71	-2.06	-4.21	9.143	7.814	-2.06	-21.12	5.65	90	51.02	51.01
5370	18.14	-7.41	-2.04	-4.19	9.794	8.35	-2.04	-20.56	5.37	90	50.91	50.95
5390	14.58	-8.36	-3.32	-5.47	7.912	6.663	-3.32	-24.06	5.04	90	50.46	50.43
5410	19.63	-7.07	-1.88	-4.03	10.75	8.876	-1.88	-22.71	5.19	90	51.18	51.09
5430	14.95	-8.25	-2.94	-5.09	8.259	6.688	-2.94	-22.81	5.32	90	50.69	50.7
5450	18.8	-7.26	-2.17	-4.32	10.481	8.314	-2.17	-24.31	5.09	90	50.71	50.85
5470	16.19	-7.91	-2.57	-4.72	9.086	7.099	-2.57	-26.5	5.34	90	50.93	50.83
5490	18.86	-7.24	-1.78	-3.93	10.699	8.163	-1.78	-25.89	5.46	90	50.92	50.79
5510	18.26	-7.39	-2.12	-4.27	10.535	7.722	-2.12	-23.53	5.27	90	51.18	51.16
5530	20.22	-6.94	-1.83	-3.98	11.938	8.286	-1.83	-24.28	5.11	90	51.44	51.3
5550	20.64	-6.85	-1.62	-3.77	12.171	8.465	-1.62	-24.93	5.23	90	51.89	51.76
5570	21.24	-6.73	-1.5	-3.65	12.546	8.693	-1.5	-22.96	5.23	90	51.42	51.33
5590	23.43	-6.3	-0.96	-3.11	14.087	9.339	-0.96	-22.77	5.34	90	51.71	51.76
5610	22.68	-6.44	-0.86	-3.01	13.868	8.816	-0.86	-23.02	5.58	90	51.17	51.22
5630	25.26	-5.98	-0.31	-2.46	15.538	9.717	-0.31	-21.81	5.67	90	51.78	51.77
5650	21.83	-6.61	-1.09	-3.24	13.482	8.348	-1.09	-22.58	5.52	90	51.47	51.55
5670	26.58	-5.75	-0.24	-2.39	16.613	9.965	-0.24	-20.75	5.52	90	52.12	52.28
5690	23.3	-6.33	-0.7	-2.85	14.787	8.511	-0.7	-21.15	5.63	90	52.12	52.25
5710	27.02	-5.68	-0.1	-2.25	17.169	9.85	-0.1	-20.38	5.58	90	51.95	52.05
5730	24.81	-6.05	-0.39	-2.54	15.765	9.046	-0.39	-23.87	5.66	90	51.59	51.69
5750	25.31	-5.97	-0.21	-2.36	16.17	9.135	-0.21	-25.2	5.76	90	51.12	51.15
5770	24.3	-6.14	-0.52	-2.67	15.72	8.583	-0.52	-22.29	5.62	90	51.02	51.06
5790	23.77	-6.24	-0.67	-2.82	15.468	8.3	-0.67	-21.99	5.57	90	51.08	51.16
5810	23.03	-6.38	-0.82	-2.97	14.942	8.087	-0.82	-26.4	5.56	90	51.36	51.43
5830	23.66	-6.26	-0.75	-2.9	15.381	8.284	-0.75	-28.13	5.51	90	51.65	51.66
5850	22.69	-6.44	-1.04	-3.19	14.787	7.904	-1.04	-22.01	5.4	90	51.88	52.05

无源测试数据 Passive test data

ANT1 Direction of figure (5G)





ANTENNA

深圳市星源创科技有限公司

SHENZHEN Xingyuanchuang TECHNOLOGY CO., LTD

附加说明

Additional instructions

01

报告中天线匹配电路是否改动，天线有关的环境处理是否增加，将直接影响天线性能，请仔细确认查看。

02

贵司如有最新试产或更新产品（如软件，**ESD**，物料等）请尽快提供我司进行验证，以确认天线性能是否有变化影响。

03

倘若贵司需要送第三方检测机构复测或客户测试，请务必先与我司进行天线相关测试确认，因主板·装配的一致性，以及天线组装的差异等因素，均可能导致天线参数的偏差。

合作 共赢

