



Approval Sheet

Customer	Yi Botong	Data	2023/08/03
Product	WiFi Antennas	Models	T106W
P/N	F903S-14RB-110	Customer P/N	
Specifications	Black FPC; RF0.81 IPEX-IV Black Line;Long=110mm		

Vender Approved By		Customer Approved By	
Checked By:		Checked By:	
Audit By:		Audit By:	
Approval By:		Approval By:	

File Revision Table

Version	Revise The Content	Revused	Approval	Date	Note



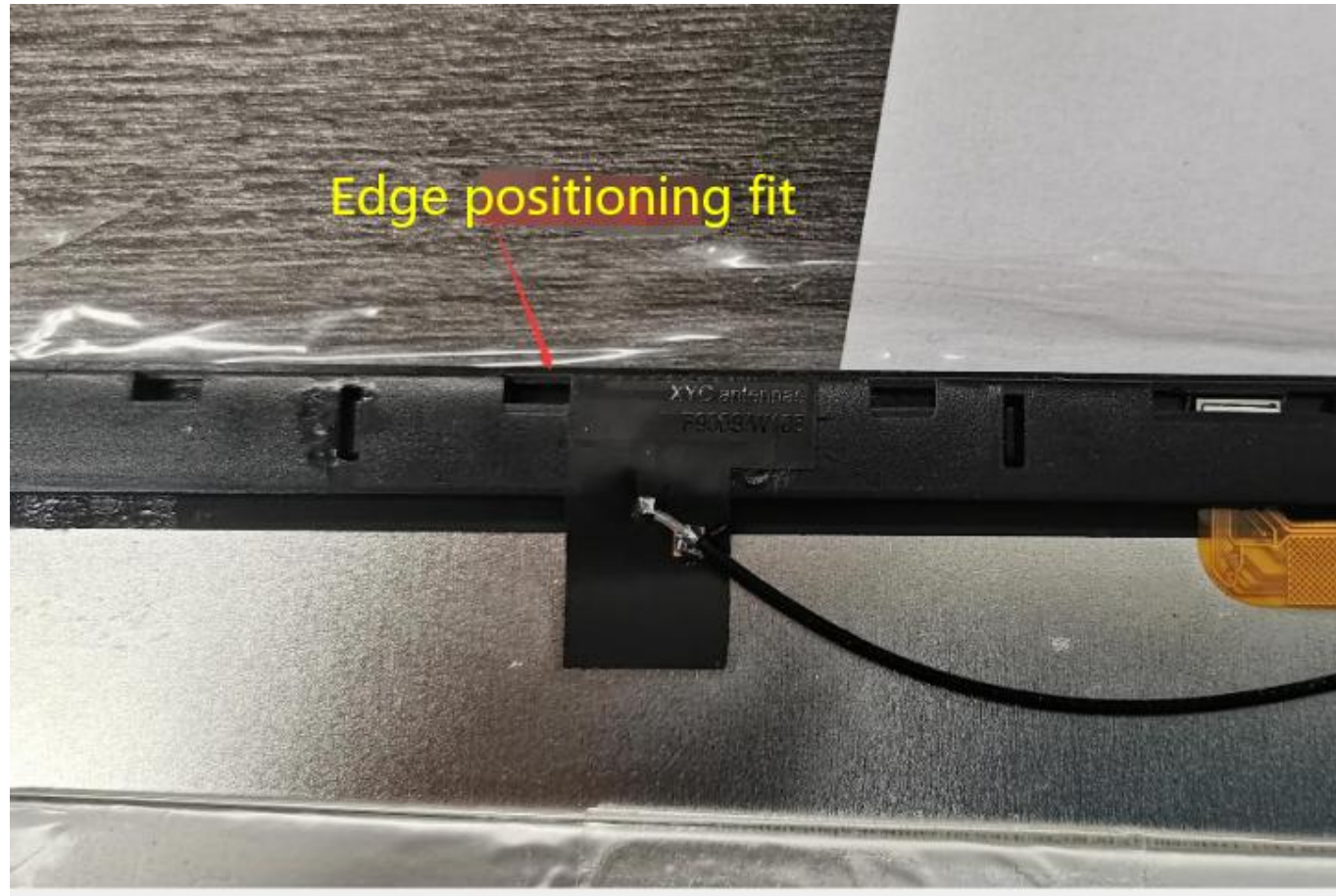
Content		
NO.	Proect	Page NO.
1	Specification	4
2	Antenna Placement	5
3	Test Data	6~~7
4	Antenna Assembly	8
5	Notes	9
6	Inspection Standard	10
7	Sample Inspection Report	11
8	Packing Specification	12



Specification	
1.1 Electrical Properties	
Characteristics	Specifications
Working Band	2.4G WiFi
Antenna From	PIFA
Impedance	50 Ω
Polarization	Linear
Peak Effi	59%@2.4G
Peak Gain	2.5dBi@2.4G
1.2 Physical Properties	
Characteristics	Specifications
Operating Temp	-10°C~+60°C
Storage Temp	-10°C~+70°C
Humidity	10~95%RH

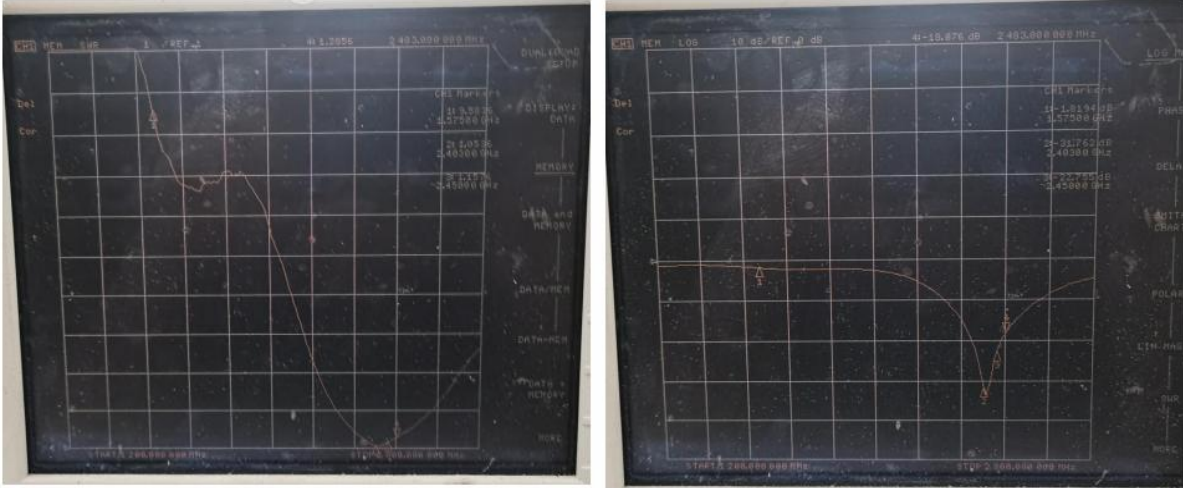


Antenna Placement



Test Data

S11 Parameter-VSWR



Frequency (MHZ)	2400	2450	2483	5150	5500	5850
VSWR	1.05	1.15	1.28			
Return Loss (DB)	-31.76	-22.70	-10.07			

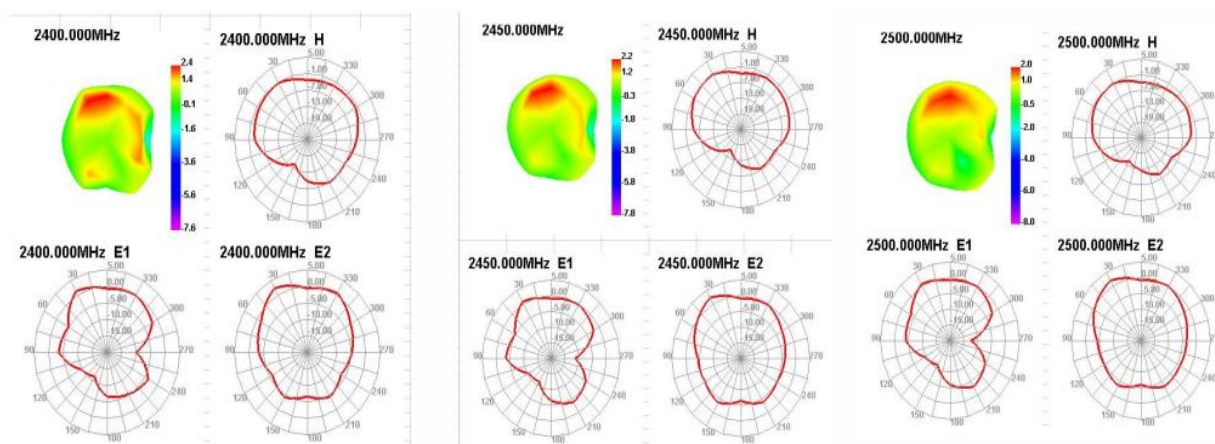
WiFi Active Test Data

802.11b	Frequency	TRP		TIS	
	2412	CH1 11Mbps	16.76	CH1 11Mbps	-84.06
2437	CH6 11Mbps	16.06	CH6 11Mbps	-84.43	
2467	CH11 11Mbps	15.46	CH11 11Mbps	-83.07	

Efficiency Table

Passive Test For WIFI2.4						
Freq (MHz)	Effi (%)	Effi (dB)	Gain (dBi)	Gain (dBd)	UHS (%)	DHS (%)
2400	58.8	-2.31	2.42	0.27	38.139	20.659
2410	56.52	-2.48	2.26	0.11	36.262	20.257
2420	57.62	-2.39	2.37	0.22	37.015	20.608
2430	56.93	-2.45	2.33	0.18	36.274	20.652
2440	56.85	-2.45	2.22	0.07	35.944	20.905
2450	56.88	-2.45	2.25	0.1	35.639	21.243
2460	56.77	-2.46	2.25	0.1	35.545	21.228
2470	56.01	-2.52	2.49	0.34	35.311	20.701
2480	57.67	-2.39	2.16	0.01	36.113	21.553
2490	59.83	-2.23	2.54	0.39	37.572	22.256
2500	57.02	-2.44	1.96	-0.19	35.666	21.352

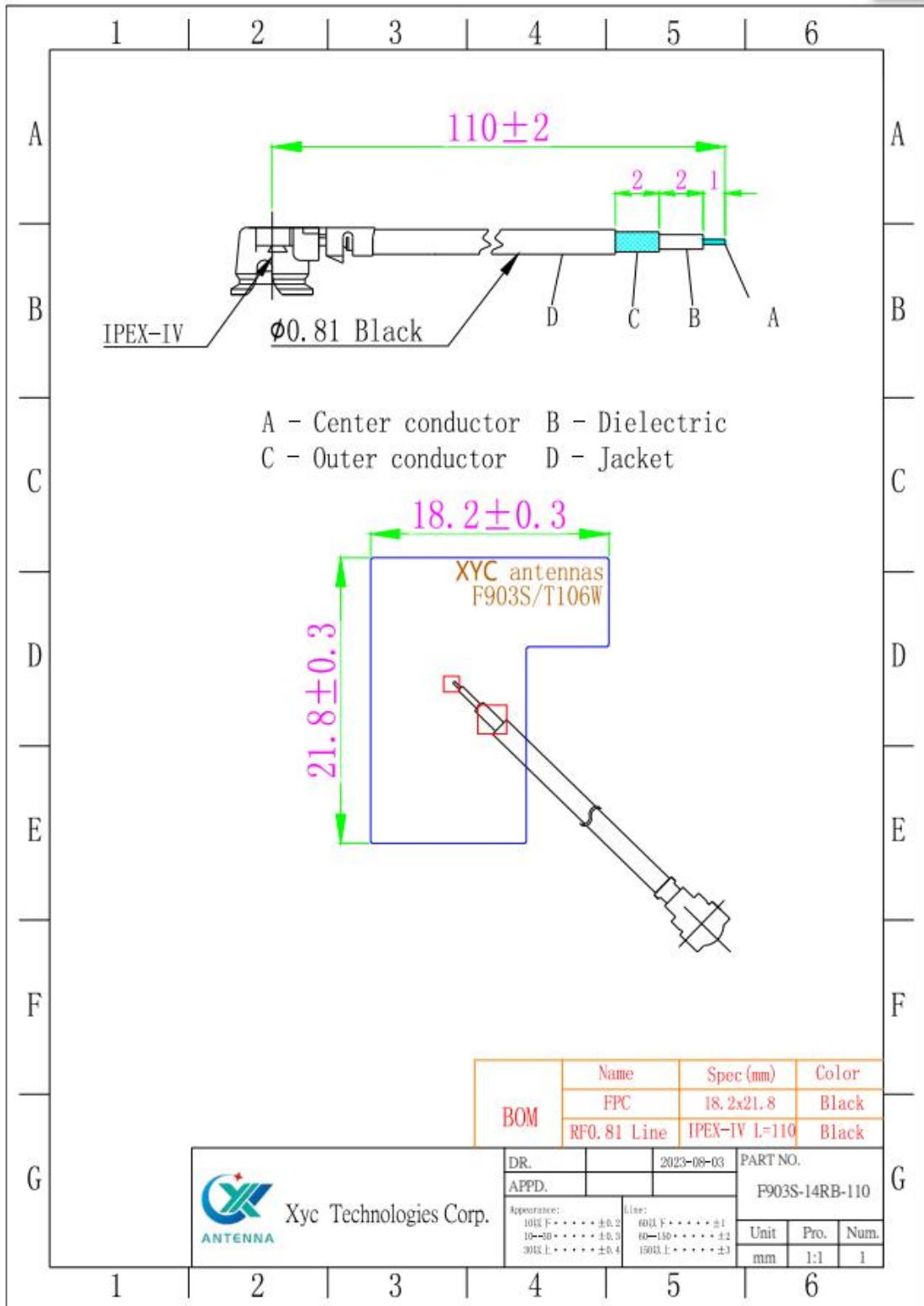
Radiation Pattern



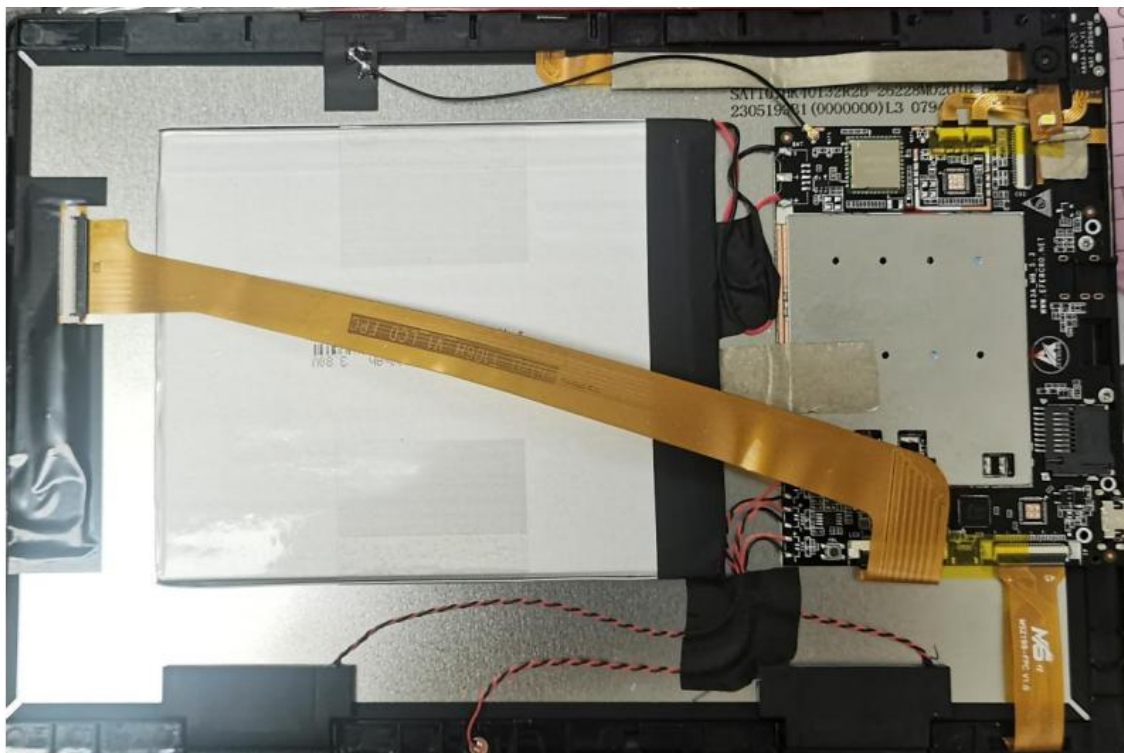
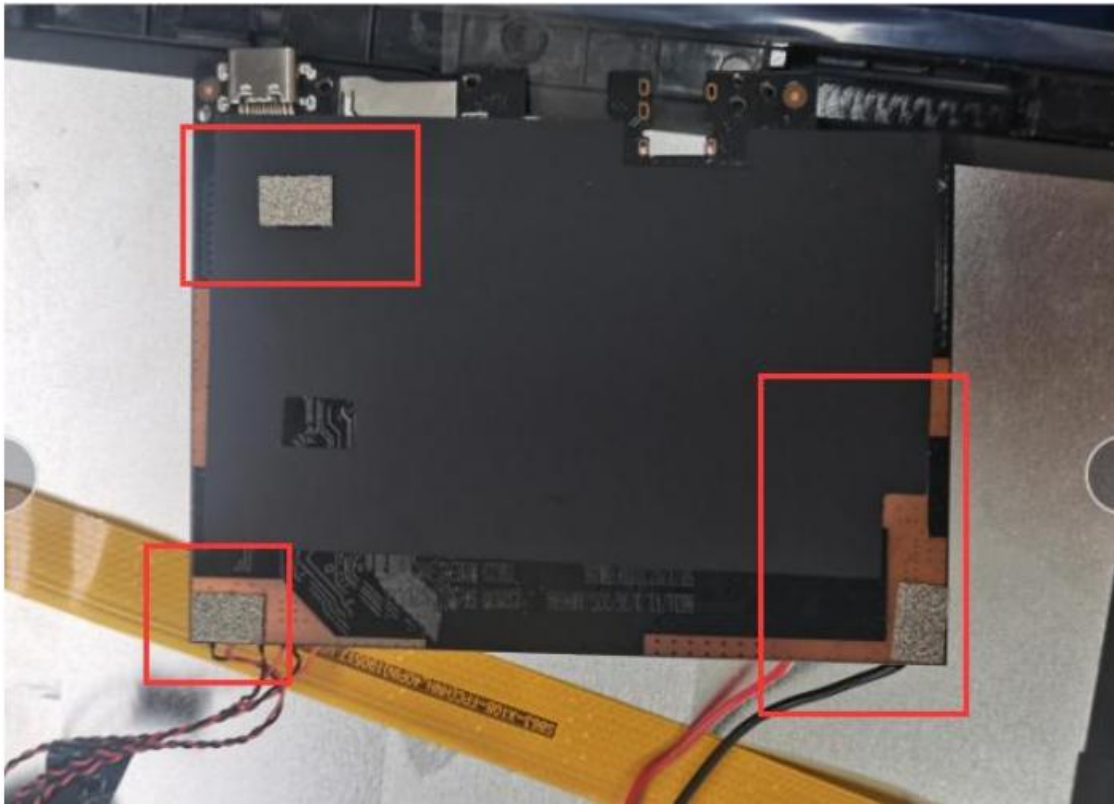
BT Measured

Test environment: Open space (channel)
 Test tool: Bluetooth speaker
 Test distance: 15m
 Results: Play music smoothly, no noise.

Antenna Assembly



Notes





Inspection Standard

Xyc Technologies Corp.	File Cod.	XYC-WI-PZ-02	Page.
	File Vers.	A0	1 of 1
File Name	Sampling Plan		

Sampling Level Table

Special Check				General			Batch Scope	Sample Word	Sampling	0.65		1.0		1.5		2.5		4.0		6.0	
S-1	S-2	S-3	S-4	I	II	III				AC	RE	AC	RE	AC	RE	AC	RE	AC	RE	AC	RE
A	A	A	A	A	A	B	2--8	A	2	0	1	0	1	0	1	0	1	0	1	0	1
A	A	A	A	A	B	C	9--15	B	3	0	1	0	1	0	1	0	1	0	1	0	1
A	A	B	B	B	C	D	16--25	C	5	0	1	0	1	0	1	0	1	0	1	1	2
A	B	B	C	C	D	E	26--50	D	8	0	1	0	1	0	1	0	1	1	2	1	2
B	B	C	C	C	E	F	51--90	E	13	0	1	0	1	0	1	1	2	1	2	2	3
B	B	C	D	D	F	G	91--150	F	20	0	1	0	1	1	2	1	2	2	3	3	4
B	C	D	E	E	G	H	151--280	G	32	0	1	1	2	1	2	2	3	3	4	5	6
B	C	D	E	F	H	J	281--500	H	50	1	2	1	2	2	3	3	4	5	6	7	8
C	C	E	F	G	J	K	501--1200	J	80	1	2	2	3	3	4	5	6	7	8	10	11
C	D	E	G	H	K	L	1201--3200	K	125	2	3	3	4	5	6	7	8	10	11	14	15
C	D	F	G	J	L	M	3201--10000	L	200	3	4	5	6	7	8	10	11	14	15	21	22
C	D	F	H	K	M	N	10001-35000	M	315	5	6	7	8	10	11	14	15	21	22	21	22
D	E	G	J	L	N	P	35001-150000	N	500	7	8	10	11	14	15	21	22	21	22	21	22
D	E	G	J	M	P	Q	150001-500000	P	800	10	11	14	15	21	22	21	22	21	22	21	22
D	E	H	K	N	Q	R	500001and over	Q	1250	14	15	21	22	21	22	21	22	21	22	21	22
								R	2000	21	22	21	22	21	22	21	22	21	22	21	22

AC-Qualified RE-No Qualified



Sample Inspection Report

Customer	Yi Botong	Product	WiFi Antennas	Quantity shipped	5	Sampling quantity	2	
Models	T106W		P/N	F903S-14RB-110		Shipping date	2023/08/03	
Sampling standard	<input checked="" type="checkbox"/> Normal inspection <input type="checkbox"/> Tightened inspection <input type="checkbox"/> Decrement inspection							
Sampling mode	MIL-STD-105D (II) Single sampling Acceptance limit AQL:CR: 0 Maj: 0.4 Min: 1.5							
Quality acceptance level			CR Acc	0	Maj ACC	0	Min ACC	0
			CR REJ	1	Maj REJ	1	Min REJ	1
project	program of tests	examination requirement	test method	inspection result				decide
				1	2	3	4	
Dimensional inspection	Line length	110±3	ruler	110	110			OK
	FPC shape	18.2±0.3	calliper	18.2	18.1			OK
	FPC shape	21.8±0.3	calliper	21.7	21.8			OK
project	program of tests	examination requirement	test method	Defect description	CR	Maj	Min	判定
visual inspectio	wire sheath	There is no scratching phenomenon on the outer cover	visual	No abnormality	0	0	0	OK
	Solder pad	No oxidation, tin point and other phenomena	visual	No abnormality	0	0	0	OK
	IPEX	No color difference, shrinkage, oxidation, deformation and other undesirable phenomena	visual	No abnormality	0	0	0	OK
electrical specification								
final judgment	<input checked="" type="checkbox"/> OK <input type="checkbox"/> NG							

FORM ID NO: XYC-WF-PZ-001

Packing Specification

