



深圳市三好无线通信有限公司

Shenzhen 3Good Wireless Communication Co., Ltd

| | |
|-----------|------------|
| File name | 财富之舟天线测试报告 |
| Project | WS620A |
| Date | 2022.12.12 |

*****CONFIDENTIAL*****

本文件属于公司秘密信息，请您恪守保密义务，勿向第三人透露。谢谢合作。

This file is confidential. Recipient(s) is(are) obligated to maintain secrecy and is(are) not permitted to disclose the contents of this file to others. Thank you.

| | |
|----|--|
| 拟作 | |
| 审核 | |

使用说明：

- 1.所有报告都在这个文档中，每次更新报告往后增加一页
- 2.每次调试保证都要有调试说明，本次报告的状态，目的以及下一步工作
- 3.在每个项目节点的报告必须包含文档中要求的所有数据



阅读报告文本最后一页为最新的调试状态，对应查找状态可以回溯到之前的报告页面

单页报告此处为结尾，为防止遗漏内容，请查阅时尽量下拉阅读到此处



传导测试数据

传导测试注意做好标注，对应到后面的测试报告状态。未更新传导则默认传导状态OK

8.19 T0样机 (2/3G补偿低频0.5dB、高频0.8, 4G补偿低频0.5dB、高频1dB)

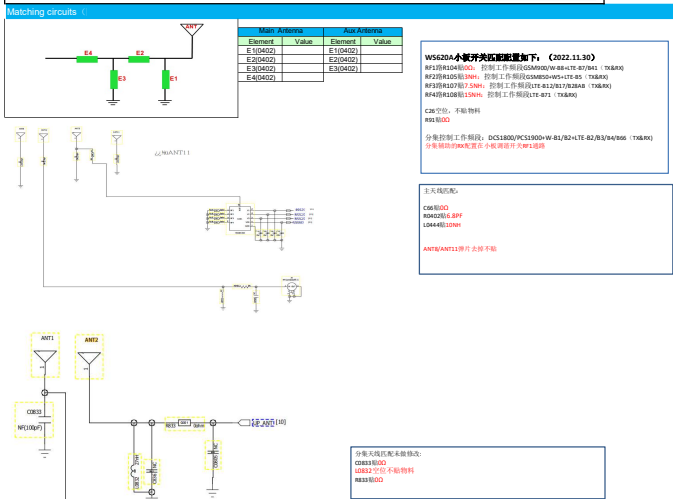
| 2G | CH | Power | Sensitivity |
|---------|----|-------|-------------|
| GSM850 | L | 32.1 | |
| | M | 32.2 | |
| | H | 32.2 | -108 |
| EGSM900 | L | 32.1 | |
| | M | 32.2 | |
| | H | 32.3 | -108 |
| DCS1800 | L | 28.8 | |
| | M | 28.5 | |
| | H | 28.5 | -108 |
| PCS1900 | L | 28.4 | |
| | M | 28.5 | |
| | H | 28.6 | -109 |

| 3G | CH | Power | Sensitivity |
|--------|----|-------|-------------|
| WCDMA1 | L | 21.4 | |
| | M | 21.5 | |
| | H | 21.4 | -107 |
| WCDMA2 | L | 21.1 | |
| | M | 21.3 | |
| | H | 21.2 | -108 |
| WCDMA5 | L | 21.7 | |
| | M | 21.6 | |
| | H | 21.6 | -110 |
| WCDMA8 | L | 21.7 | |
| | M | 21.7 | |
| | H | 21.5 | -108 |

| 4G | CH | Power | Sensitivity |
|---------|----|-------|-------------|
| FDD-B2 | L | 21.2 | |
| | M | 21.3 | |
| | H | 21.3 | -96 |
| FDD-B3 | L | 21.3 | |
| | M | 21.2 | |
| | H | 21.3 | -95 |
| FDD-B4 | L | 21.3 | |
| | M | 21.1 | |
| | H | 21.3 | -95 |
| FDD-B5 | L | 21.6 | |
| | M | 21.5 | |
| | H | 21.5 | -97 |
| FDD-B7 | L | 21.1 | |
| | M | 21.2 | |
| | H | 20.9 | -95 |
| FDD-B12 | L | 21.7 | |
| | M | 21.8 | |
| | H | 21.8 | -97 |
| FDD-B17 | L | 21.9 | |
| | M | 21.9 | |
| | H | 22.1 | -97 |
| FDD-B28 | L | 21.8 | |
| | M | 21.7 | |
| | H | 21.9 | -96 |
| FDD-B66 | L | 21.1 | |
| | M | 21.3 | |
| | H | 20.8 | -93 |

| 4G | CH | Power | Sensitivity |
|---------|----|-------|-------------|
| FDD-B71 | L | 21.6 | |
| | M | 21.8 | |
| | H | 21.7 | -96 |
| FDD-B41 | L | 20.8 | |
| | M | 20.9 | |
| | H | 21 | -93 |

注：1 本次测传导未加线损，低频可在现有的基础上低频加0.5dB、高频加0.8dB。
 2：本次测试未加屏蔽盒测试，灵敏度可能不准确，功率不影响。



Test data (测试数据)

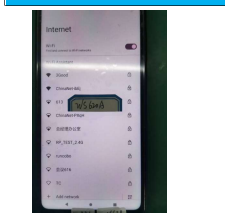
| CH | TRF | TIS | CH | TRF | TIS |
|---------|-------------|---------|---------|--------------|--------|
| 25 | 128 27.17 | -102.18 | 46 | 18650 19.39 | -78.85 |
| OSM90 | 186 27.08 | -102.18 | LTE-B2 | 18650 19.39 | -78.85 |
| | 251 26.76 | | | 19100 19.21 | |
| EGSM900 | 1 26.18 | | LTE-B3 | 18250 18.50 | -93.49 |
| | 62 26.32 | -101.62 | | 19975 19.43 | -92.82 |
| | 124 26.43 | | LTE-B4 | 19900 19.61 | |
| DCS1800 | 512 25.13 | | | 20900 18.89 | |
| | 688 26.37 | -102.7 | LTE-B5 | 20350 19.38 | |
| | 888 26.72 | | | 20625 17.11 | -91.83 |
| PCS1900 | 896 25.36 | | LTE-B6 | 20900 16.84 | |
| | 912 25.89 | | | 20800 17.56 | |
| | 961 25.43 | -103.00 | LTE-B7 | 21100 17.29 | -90.71 |
| | 976 25.88 | | | 21400 17.63 | |
| 3G | 4357 16.73 | | LTE-B12 | 23800 16.83 | |
| W-B5 | 4469 16.84 | -104.76 | | 23995 17.04 | -89.83 |
| | 4468 17.08 | | LTE-B17 | 23790 16.96 | |
| | 4468 17.08 | | | 23790 17.02 | -90.94 |
| W-B1 | 10562 20.83 | | LTE-B28 | 23600 17.67 | |
| | 10700 20.25 | -104.26 | | 27200 16.97 | |
| | 10838 19.16 | | LTE-B28 | 27435 17.43 | -90.94 |
| W-B2 | 8962 20.16 | -104.43 | | 27910 17.03 | |
| | 8960 19.53 | | LTE-B86 | 132022 18.95 | |
| | 9030 19.13 | | | 132622 18.43 | -93.21 |
| W-B8 | 2097 16.76 | | | 132622 18.6 | |
| | 2071 16.84 | -103.24 | LTE-B71 | 133172 17.1 | |
| | 3088 17.11 | | | 133297 16.53 | -91.81 |
| | | | | 133422 16.54 | |
| | | | LTE-B41 | 40620 17.63 | |
| | | | | 40620 17.64 | -88.76 |
| | | | | 41140 16.97 | |

All of implementation antenna
 Main antenna/Antenna Label(A):
 LTE-B2/B24/LTE-B3/B24/4B/8/8
 WCDMA-B1/B2/B3/5
 GSM-900/1800
 Div antenna/Antenna Label(B):
 LTE-B2/B24/LTE-B3/B24/4B/8/8
 WCDMA-B1/B2/B3/5
 GSM-900/1800
 WFI/B7.4G: GPS-1379.42 MHz
 WFI/B7.4G: GPS-1575.42 MHz

Antenna Max. Peak Gain:
 EGSM900: 2.39dB
 GSM900: 2.26dB
 DCS1800: 0.85dB
 PCS1900: 0.87dB
 WCDMA-B1: 0.16dB
 WCDMA-B2: 0.87dB
 WCDMA-B3: 2.26dB
 WCDMA-B5: 2.39dB
 LTE-B2: 0.07dB
 LTE-B5: -0.69dB
 LTE-B6: -0.69dB
 LTE-B7: -1.05dB
 LTE-B12: -0.69dB
 LTE-B17: -0.69dB
 LTE-B28: -0.69dB
 LTE-B28: -0.69dB
 LTE-B86: -0.69dB
 LTE-B71: -0.69dB
 LTE-B41: -0.69dB
 WFI-B.4G: -0.69dB
 GPS: -2dB

GPS/WIFI Field test (GPS/WIFI高测)

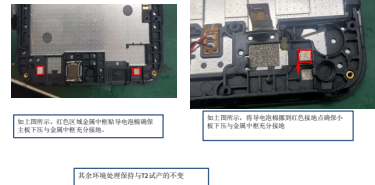
WiFi 距离路由器约14米



| 序号 | 测试地点 | 测试项目 | 参考指标 | 待测型号 |
|----|-------|-----------|------|------|
| 1 | | 待测首测定位时间 | <60S | 1# |
| 2 | | 待测再测定位时间 | <60S | 51 |
| 3 | 一楼楼梯间 | 待测再测定位时间 | 56S | 5 |
| 4 | | 待测再测定位成功率 | 58% | 12 |
| 5 | | 定位的精度 | 2 | 2 |
| 6 | | 定位精度最大值 | >40 | 42 |



Treatment measures (环境处理)



Report description

The end