

SKY[®]
DEVICES



Designed in the USA
Manufactured to Sky Devices Specifications

SKY[®]
DEVICES

Elite 5.0L+



User Manual / Manual de Instrucciones /
Manual do Usuário

Contents

1 Safety Precautions.....	2
2 Overview.....	4
3 Installing the SIM card.....	5
4 Installing the storage card.....	6
5 Charging.....	7
6 Power on / Power off.....	8
7 Android Home Screen Guides.....	9
8 Changing OSD Language & System Time.....	10
9 Connecting to Wi-Fi®.....	10
10 Transferring Contents from PC	11
11 Troubleshooting.....	12
12 Bluetooth.....	14
13 Technical Specifications.....	15
14 FCC WARNING.....	16
15 Specific Absorption Rate (SAR) information.....	18

Notice

The phone pictures, as well as data on the phone appearance, color and design features found in the manual are for reference only. We reserve the right to change the appearance and technical parameters of the product without prior notice.

1 Safety Precautions

Never attempt to disassemble your phone. You alone are responsible for how you use your phone and any consequences of its use.

As a general rule, always switch off your phone wherever the use of a phone is prohibited. Use of your phone is subject to safety measures designed to protect users and their environment.

Do not use your phone in damp areas (bathroom, swimming pool...). Protect it from liquids and other moisture.

Do not expose your phone to extreme temperatures lower than -10°C and higher than $+55^{\circ}\text{C}$.

The physicochemical processes created by chargers impose temperature limits when charging the battery. Your phone automatically protects the batteries in extreme temperatures.

Do not leave your phone within the reach of small children (certain removable parts may be accidentally ingested).

Electrical safety: Only use the chargers listed in the manufacturer's catalogue.

Aircraft safety: When traveling by plane, you will need to switch your phone off when so instructed by the cabin crew or the warning signs.



Personal safety: To prevent possible hearing damage,

do not listen at high volume levels for long periods.

Explosive materials: Please comply with warning signs at gas stations asking you to switch your phone off. You will need to comply with radio equipment usage restrictions in places such as chemical plants, fuel depots and at any location where blasting operations are under way.

Electronic equipment: To avoid the risk of demagnetization, do not let electronic devices close to your phone for a long time.

Electronic medical equipment: Your phone is a radio transmitter which may interfere with electronic medical equipment or implants, such as hearing aids, pacemakers, insulin pumps, etc. It is recommended that a minimum separation of 15 cm be maintained between the phone and an implant. Your doctor or the manufacturers of such equipment will be able to give you any advice you may need in this area.

Hospitals: Always make sure that your phone is switched off in hospitals when so instructed by warning signs or by medical staff.

Road safety: Do not use your phone when driving. In order to give your full attention to driving, stop and park safely before making a call. You must comply with any current legislation.

Distance of operation: This phone model has been tested and meets radiofrequency exposure guidelines when used as follows:

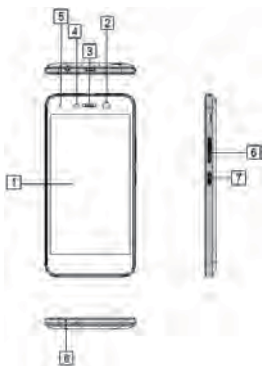
- Against the ear: Place or receive a phone call and hold the phone as you would a wire line telephone.
- Body worn: When transmitting, place the phone in a carry accessory that contains no metal and positions the phone a minimum of 2.5cm from your body. The use of other accessories may not ensure compliance with

radiofrequency exposure guidelines. If you do not use a body worn accessory and are not holding the phone at the ear, position the phone a minimum of 2.5cm from your body.

- **Data operation:** When using a data feature, position the phone a minimum of 2.5cm from your body for the whole duration of the data transmission.

2 Overview

Front and Side panels



- 1** Touch Screen
- 2** Front Camera
- 3** Earpiece
- 4** Light/Proximity Sensor

- 5** **Indicator light**
- 6** **Volume +/- Button**
- 7** **Power button**
- 8** **Microphone**

Back Panel

- 1** **Back Camera**
- 2** **Flash Light**
- 3** **Headphone Jack**
- 4** **Speaker**



3 Installing the SIM card

You need to remove the back cover before you can install the SIM card and battery. Also, make sure to always turn off the power before installing or

replacing the SIM card and battery.

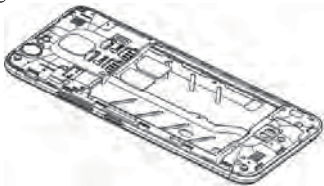
To prize up the back cover

- 1) Make sure your device is turned off.
- 2) Use your nail or pick to open up the back cover, since there is a slot at the right bottom corner of back cover.

To install the SIM card

Your device is supported both 2G, 3G (WCDMA) and 4G SIM cards.

- 1) Remove the battery if it is installed.
- 2) Locate the SIM card slot, and then insert the SIM card with it's direction as the following figure.



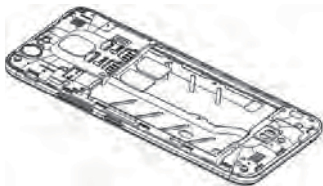
- 3) Slide the SIM card completely into the slot.

4 Installing the storage card

To have additional storage for your images, videos,

music, and files, you can purchase a memory card and install it into your device.

- 1) Make sure that your device is turned off, and then remove the back cover.
- 2) Remove the battery if it is installed.
- 3) Locate the memory card slot on the upper part of the exposed Right panel.
- 4) Insert the memory card into the slot according to the indication icon.



To remove the memory card, perform converse installations.

Note: make sure the power is off before inserting or removing the memory card to avoid damages.

5 Charging

New batteries are shipped partially charged. Before you start using your device, it is recommended that you install and charge the battery. Some batteries

perform best after several full charge/discharge cycles.

- Plug the DC end of adapter to the micro USB port of the device and plug the AC end to the wall socket for charging.
- Normally it takes approximately 3~5 hours to fully charge the device. Operating the device during charging with the AC adapter may extend the time of full charging.

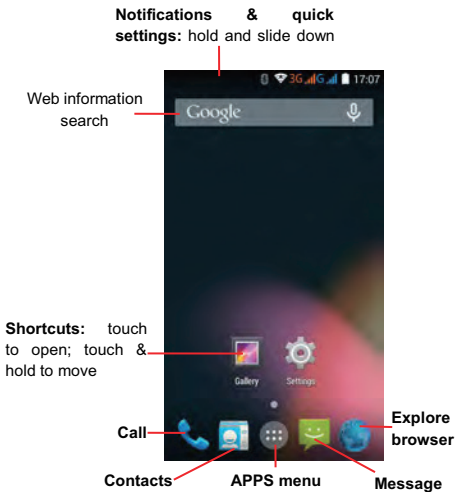
6 Power on / Power off

- 1) To turn on the device, press and hold the **Power** button until you see the start-up screen then release, it will automatically enter the **Home** screen. If it is the first time to use it, it will enter set-up guide menu. Please follow the on-screen instructions.
- 2) Press the **Power** button once to enter sleep mode and press it again to open the device.
- 3) Press and hold the **Power** button, and then tap on **OK** to power off the device.


Notice

If the system halts, press and hold the **Power** button until it is turned off completely.

7 Android Home Screen Guides




8 Changing OSD Language & System Time

On the Home menu tap on the  icon and select **Settings** icon to access the list of options.


- Select **Settings---Language & input---Language** to change OSD language.
- Select **Settings---Date & time** to change system time.

9 Connecting to Wi-Fi®

- On the Home menu tap on the  icon and select **Settings** icon to access the list of options. Select **Wireless & Networks**.
- If the Wi-Fi® is off, tap on the Wi-Fi® line to turn it on.
- The device will scan for available Wi-Fi® networks and display them on the screen.
- Tap on the network you want to connect to. Then tap on the wireless password field to enter the required network information and tap on **Enter---Connect**.

- Your device will now attempt to establish a connection to the Wi-Fi® access point with the network parameters you entered.

10 Transferring Contents from PC

- Connect the device to your PC/Notebook via USB cable.
- If the network of your PC/Notebook is on, it will install the required driver automatically then tap "Turn on USB storage" on the screen to turn on USB storage function.
- Select the contents you want to transfer from your PC/Notebook.
- Drag the contents from the PC/Notebook to the device.
- Please do not disconnect the USB cable during loading. It may cause malfunction of the device and files.
- Left click on  on the right bottom of your PC/Notebook to disconnect the device from PC/Notebook safely.

11 Troubleshooting

Q1: What if water enters the device?

A:

- 1) DO NOT turn on the device.
- 2) Disconnect the outlet cable in order to turn it off instead of pressing the power button. Disconnect all external devices and then send to the service center for advice.

Q2: How to check the device if it won't turn on?

A:

- If the power is low, connect the adapter to charge.
- Remove the micro-SD card and any other external device.

Q3: How to restore the factory default settings?

A : Go to **Settings---Backup & reset---Factory data reset** to recover the system to the default status.

Q4: How to prolong the usage time of the battery?

A:

- Adjust the brightness of the touch screen to proper level on **Settings---Display---Brightness** menu.
- Turn down the volume.

- Set the sleep time to proper level on **Settings--- Display---Sleep** menu.

Q5: What to do if the micro SD or SIM card can't be read?

A: Please turn off the device and re-insert the card.

Q6: Why are the Bluetooth and 3G function disabled? (Applicable only for model with Bluetooth and 3G function)

A: Check if the "Airplane mode" is enabled, if it is then the Bluetooth and 3G function can't be activated.

12. Bluetooth

The phone supports Bluetooth functions, you can establish a wireless connection between the phone with other compatible devices, and data transmission, and you can establish a wireless connection between devices in the phone with a distance of several meters. Bluetooth connection may be interference by obstacles, such as walls or another electronic device.

Enter the setting menu; Touch the Bluetooth to open the function, idle screen will display Bluetooth icon in the status bar.

Open the Bluetooth discoverable and other devices can search the phone.

Before using the phone as a Bluetooth device, you need to pair the phone with the target device. As follows:

-Sure your phone has Bluetooth-enabled.

-Touch "Scan for devices." Bluetooth devices within the range of the phone will start scanning.

-Touch the device you want to pair, to confirm password to complete the pairing

You can use Bluetooth to share the pictures, videos or music files with family and friends

13 Technical Specifications

Processor	MT6737
RAM (#)	2GB LPDDR3
Storage capacity(#)	EMMC 16GB
Size	5.0" HD Capacitive Multi-touch
Resolution	720x1280 pixels
Descriptions	Front: 8.0M pixel; Back: 13.0M pixel
Communications	Wi-Fi® (802.11 b/g/n), Bluetooth®
GPS Center	1575.42MHz

Frequency	
Operating Temperature	5-35°C
Operating Humidity	35%-85%
Storage Temperature	-10-55°C
Storage Humidity	20%-93%
Adapter	AC 100~240V; DC 5V/1A
Output Power (maximum)	≤5~10W
Battery	2100mAh Li-ion battery
Weight	About 143.7g
Dimension	144.8mm x71.5mm x8.7mm

Notice

The # symbol means that the item is optional.

14 FCC WARNING

Any Changes or modifications not expressly approved by the party responsible for compliance could void the user's authority to operate the equipment.

This device complies with part 15 of the FCC Rules.

Operation is subject to the following two conditions:

(1) This device may not cause harmful interference, and (2) this device must accept any interference received, including interference that may cause undesired operation.

Note: This equipment has been tested and found to comply with the limits for a Class B digital device, pursuant to part 15 of the FCC Rules. These limits are designed to provide reasonable protection against harmful interference in a residential installation. This equipment generates, uses and can radiate radio frequency energy and, if not installed and used in accordance with the instructions, may cause harmful interference to radio communications. However, there is no guarantee that interference will not occur in a particular installation. If this equipment does cause harmful interference to radio or television reception, which can be determined by turning the equipment off and on, the user is

encouraged to try to correct the interference by one or more of the following measures:

—Reorient or relocate the receiving antenna.

—Increase the separation between the equipment and receiver.

—Connect the equipment into an outlet on a circuit different from that to which the receiver is connected.

—Consult the dealer or an experienced radio/TV technician for help.

15 Specific Absorption Rate (SAR) information

SAR tests are conducted using standard operating positions accepted by the FCC with the phone

transmitting at its highest certified power level in all tested frequency bands, although the SAR is determined at the highest certified power level, the actual SAR level of the phone while operating can be well below the maximum value, in general, the closer you are to a wireless base station antenna, the lower the power output.

Before a new model phone is available for sale to the public, it must be tested and certified to the FCC that it does not exceed the exposure limit established by the FCC, Tests for each phone are performed in positions and locations (e.g. at the ear and worn on the body) as required by the FCC.

For body worn operation, this model phone has been tested and meets the FCC RF exposure guidelines when used with an accessory designated for this product or when used with an accessory that contains no metal and that positions the handset a minimum of 1.0 cm from the body.

Non-compliance with the above restrictions may result in violation of RF exposure guidelines.