



PnP IP/Network Camera

Quick Installation Guide

Pangolin T series

VStarcam, IP Camera Expert

一. Hardware installation

Please connect the IP camera and router via network cable.



And make sure that the Power indicator light of the router is on (yellow) and the Network Indicator light is flashing (green).



Please use the provided power adapter. Unauthorized power adapter may damage the IP camera.

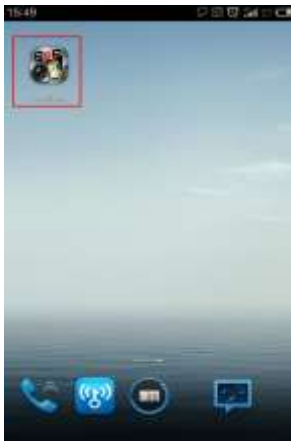
Note: The IP camera can be reset to factory setting by pressing the reset button for 10 seconds. The reset button can be found on the bottom of the camera.

二. View via Android mobile phone

1. **Install the P2PCam264 software:** Visit the URL: <http://cd.gocam.so> via the phone web browser, and follow the instruction to download or scan the QR code to download the PnP version software.



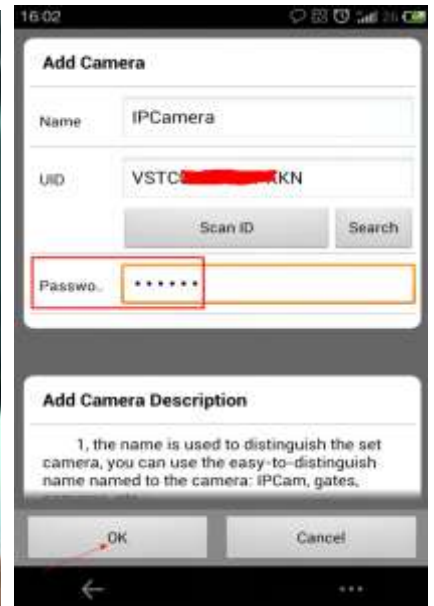
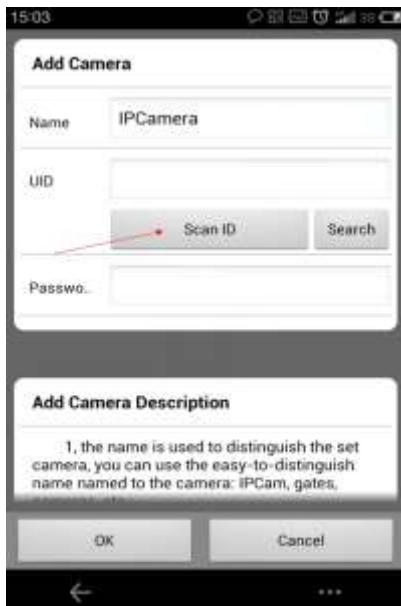
2. "VsCam" will be shown on the phone desktop after success installation.



3. Run the software and click "Add" to add cameras.



4. Click "scan", and then point the phone camera towards the UID sticker.



The UID can be found on the bottom of the camera or the warranty card. After a "beep" sound, the UID is scanned successfully. Also you can click "search" to add cameras in the LAN.

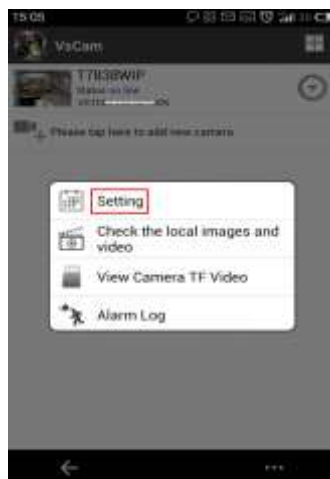
The default password is: 888888; The default user is : admin

5. Click "camera" to view the live video.



6. WIFI Setup

Click the icon on the right of the camera to set the camera. click "Setting" and "Wifi Setting", then the Router SSID list will pop up. Click the right SSID, and input WIFI password, click "OK". Then unplug the camera's network cable, the camera will restart, and auto connect to the WiFi.



Notes:

If the camera has Pan/Tilt function, users can slide up and down the video screen to control the camera.

三. View via iPhone

1. **Install the VsCam software:** Visit the URL: <http://cd.gocam.so> via the phone web browser, and follow the instruction to download or scan the QR code to download the PnP version software.



2. **"VsCam" will be shown on the phone desktop after success installation.**



3. **Run the software and click "Add" to add cameras**



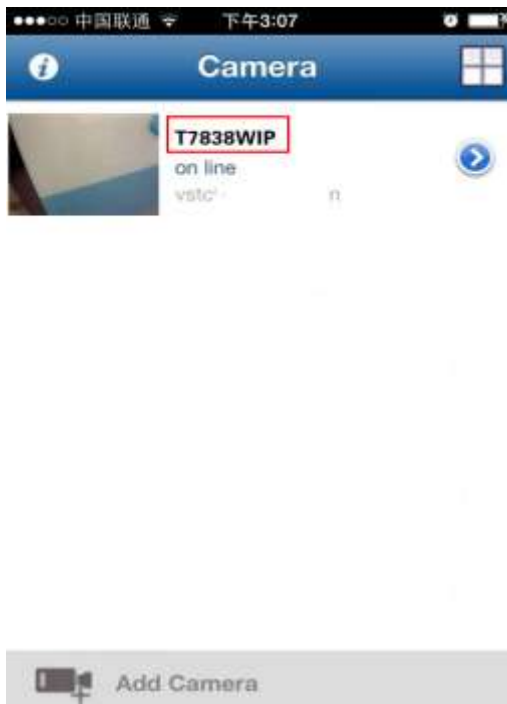
4. **Click "Scan", then scan the camera's UID.**



Point iPhone camera towards the UID (The UID can be found on the bottom of the IP camera or the warranty card). After a "beep" sound, the UID is scanned successfully. Also you can click **search button** to add cameras in the LAN, or manually add a camera by pressing "+" button, to input the camera's UID and password.

The default password is: 888888; The default user is : admin

5. **Click "camera" to view the live video.**



6. WIFI Setup

Click the arrow icon of the online camera, press "WIFI Setting" label, then the Router SSID list will pop up. Click the right router's SSID, and input WIFI password, click "Add". Then unplug the camera's network cable, the camera will restart, and connect the WIFI automatically.



Notes:

If the device has Pan/Tilt function, users can slide up and down on the video screen to control the camera P/T.

四. View via PC

1. Visit <http://cd.gocam.so> to get a download link for PC client.



After installation this icon will be shown on the desktop, double click it.

2. Click "Add Camera", to connect camera in LAN or in WAN.

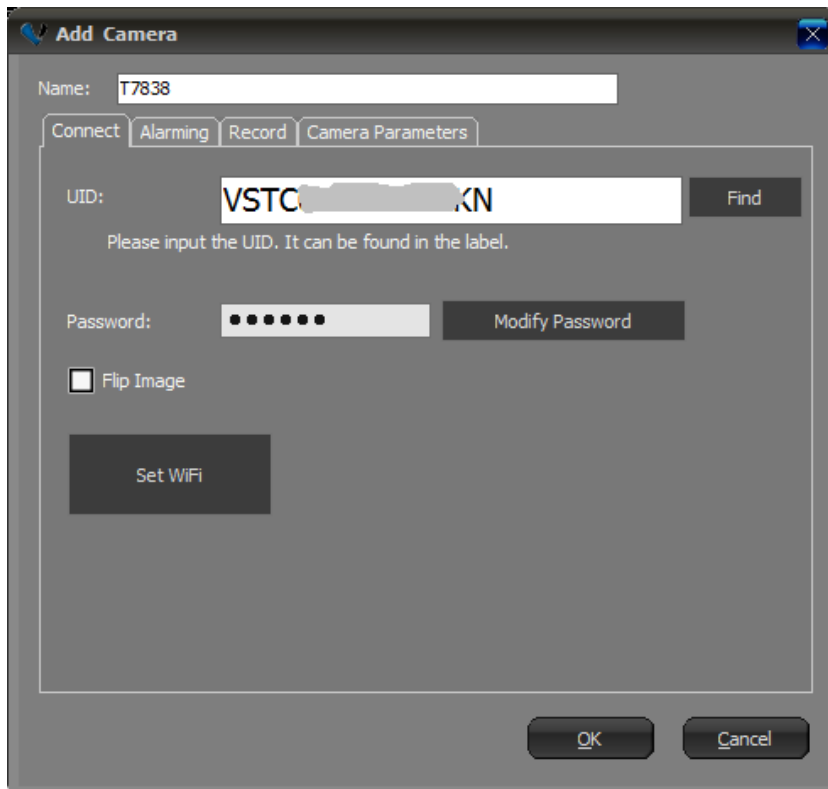


Add cameras in LAN: click "Find" button and select the cameras.

Add cameras in WAN: Input UID (UID can be found on the bottom of the camera or warranty card)

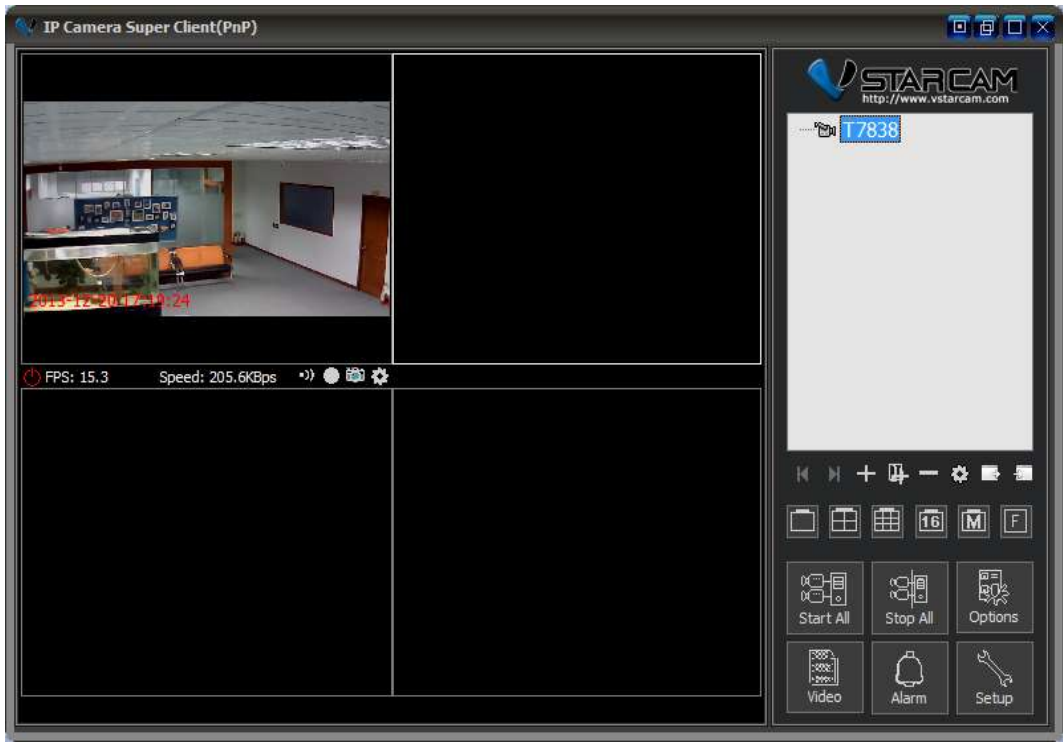
Default password: 888888.

3. Click "OK" to confirm add camera.



"Set WiFi": can setup camera to be connected via WiFi.

4. Double click "IP Camera" icon to view the camera.



Warning

This equipment has been tested and found to comply with the limits for a Class B digital device, pursuant to part 15 of the FCC Rules. These limits are designed to provide reasonable protection against harmful interference in a residential installation. This equipment generates, uses and can radiate radio frequency energy and, if not installed and used in accordance with the instructions, may cause harmful interference to radio communications. However, there is no guarantee that interference will not occur in a particular installation. If this equipment does cause harmful interference to radio or television reception, which can be determined by turning the equipment off and on, the user is encouraged to try to correct the interference by one or more of the following measures:

- Reorient or relocate the receiving antenna.
- Increase the separation between the equipment and receiver.
- Connect the equipment into an outlet on a circuit different from that to which the receiver is connected.
- Consult the dealer or an experienced radio/TV technician for help.

Caution: Any changes or modifications to this device not explicitly approved by manufacturer could void your authority to operate this equipment.

This device complies with part 15 of the FCC Rules. Operation is subject to the following two conditions: (1) This device may not cause harmful interference, and (2) this device must accept any interference received, including interference that may cause undesired operation.

To comply with FCC RF exposure compliance requirements, this grant is applicable to only mobile configurations. The antennas used for this transmitter must be installed to provide a separation distance of at least 20 cm from all persons and must not be co-located or operating in conjunction with any other antenna or transmitter.

Note: For more information, please refer to online CD: <http://cd.gocam.so>

