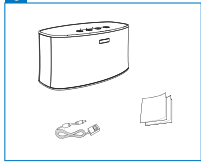


HITACHI

W200

Quick Start Guide



This device complies with part 15 of the FCC Rules. Operation is subject to the following two conditions: (1) This device may not cause harmful interference, and (2) this device must accept any interference received, including interference that may cause undesired operation.

Note: This equipment has been tested and found to comply with the limits for a Class B digital device pursuant to Part 15 of the FCC Rules. These limits are designed to provide reasonable protection against harmful interference in a residential installation. This equipment generates, uses and can radiate radio frequency energy and, if not installed and used in accordance with the instructions, may cause harmful interference to radio communications.

However, there is no guarantee that interference will not occur in a particular installation. If this equipment does cause harmful interference to radio or television reception, which can be determined by turning the equipment off and on, the user is encouraged to try to correct the interference by one or more of the following measures:
 Reorient or relocate the receiving antenna.
 Increase the separation between the equipment and receiver.
 Connect the equipment into an outlet on a circuit different from that to which the receiver is connected.
 Consult the dealer or an experienced radio/TV technician for help.

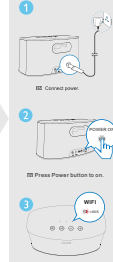
Warning: Changes or modifications to this unit not expressly approved by the party responsible for compliance could void the user's authority to operate the equipment.

The antenna(s) used for this transmitter must be installed to provide a separation distance of at least 20 cm from all persons and must not be co-located or operating in conjunction with any other antenna or transmitter, except in accordance with FCC multi-transmitter product procedures.

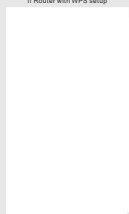
Setup Apps



Power On



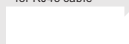
WiFi Setup option 1
if Router with WPS setup



WiFi Setup option 2
if Router without WPS setup



WiFi Setup option 3
for RJ45 cable



WPS Setup



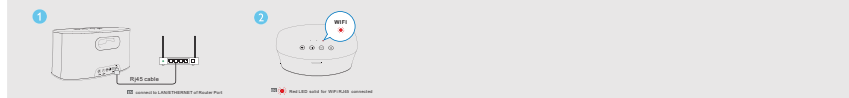
For IOS Apple device



For Android device



WiFi RJ45 cable Setup (for W100 and W200)



Bluetooth Setup



NFC Bluetooth Setup



AUX IN Setup



Factory reset



Power off



For IOS Apple device



For Android device



LED behavior	LED flash frequency	Working Status
WiFi Red LED slow flash	1Hz	enter manual WiFi pairing with MODE method.
WiFi Red LED fast flash	4Hz	enter auto WiFi pairing with WPS method.
WiFi White LED slow flash	1Hz	Enter WiFi disconnection or connecting mode
BT Blue LED fast flash	4Hz	enter BT pairing mode.
WiFi White LED solid	Solid	WiFi paired and connected successfully
WiFi Red LED solid	Solid	WiFi with RJ45 cable connected successfully.
BT Blue LED solid	Solid	Bluetooth paired and connected successfully.
Aux in Green LED solid	Solid	Main unit work at Aux in source