

TM

Gateway for Tork EasyCube

LTE-M

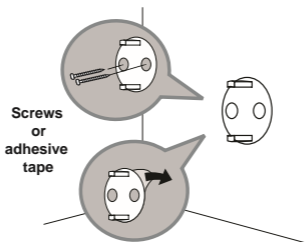
User and Installation Manual



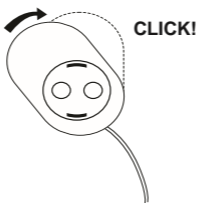
TORK®

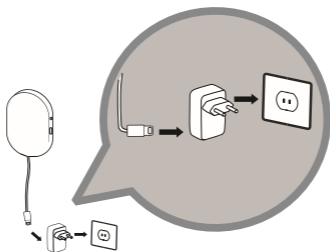
Set-up gateway

1



2

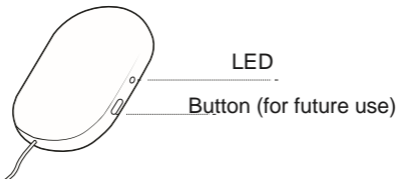




NOTE/TIP

- Install in a location with good access to a mobile network.
- Install as high up as possible.
- Install at least 1 meter (39") away from water.
- Install at least 1 meter (39") away from Wi-Fi equipment.

Lights & Buttons



Colour LED	What it means
Blue	Blinking light. Wait. The system is connecting.
Green	Steady light. All is OK.
Red	Steady light. Error. Something is wrong with the connection.



NOTE/TIP

The LED can be difficult to see in direct sunlight. Try to cover the sunlight to improve readability.

Technical Specification

Type of communication	802.15.4 , LTE-M, 2G
Frequency 802.15.4	2.4 GHz
Peak Power	10 Watt
Average Power	0.7 Watt
Input Voltage	5V @2A

Product component dimensions (mm/ inch)

ITEM	LENGTH	WIDTH	HEIGHT
Gateway	134 mm/ 5.28"	86 mm/ 3.39"	25 mm/ 0.98"

Product weight (g/ ounce)

COMPONENT	WEIGHT
Gateway	171 g/ 6 oz
Mounting bracket	7 g/ 0.25 oz

Environmental conditions

CONDITION	MINIMUM	MAXIMUM
Storage & transport temp.	+10 °C	+40 °C
Storage & transport humidity	65% Rh	85% Rh
Operating temp.	+15 °C	+45 °C
Operating humidity (non-condensing)	15% Rh	90% Rh
Pressure	700 hPa	1060 hPa

Warnings

- Install at least 25 cm/ 10 inches from any person.
- Do not modify the gateway in any way (including painting it).
- Only use the power supply provided with the gateway.
- Only use SIM cards approved by Essity.
- If any of the contents of Tork EasyCube™ appears to be damaged or broken, contact Essity Customer Service at 1 866 722 8675, for North America. For Europe please contact your Essity representative.

Important

- Save this user manual for future reference.
- If any changes to the installation are necessary, please contact Essity for support.
- No changes or modification of this equipment is allowed.
- Gateway for Tork EasyCube™ must be returned to Essity after the end of its service life.
- Devices shown are not actual size.

Simplified EU Declaration Of Conformity

Hereby, Essity Hygiene and Health AB declares that the radio equipment Gateway for Tork EasyCube™ Gateway is in compliance with Directive 2014/53/EU.

The full text of the EU declaration of conformity is available at the following internet address:
www.torkglobal.com

Labelling symbols

The following symbols appear on your Gateway for Tork EasyCube™ or accessories and/or packaging:



WEEE-marking

Dispose of electrical components in accordance with your local regulations.



European Conformity mark



Instruction manual



Caution

Special care should be taken to ensure safety and efficiency. Failure to do so could cause damage to equipment or lead to the receipt of incorrect data.

Note: This equipment has been tested and found to comply with the limits for a Class B digital device, pursuant to part 15 of the FCC Rules. These limits are designed to provide reasonable protection against harmful interference in a residential installation. This equipment generates, uses, and can radiate radio frequency energy and, if not installed and used in accordance with the instructions, may cause harmful interference to radio communications. However, there is no guarantee that interference will not occur in a particular installation. If this equipment does cause harmful interference to radio or television reception, which can be determined by turning the equipment off and on, the user is encouraged to try to correct the interference by one or more of the following measures:

- Reorient or relocate the receiving antenna.
- Increase the separation between the equipment and receiver.
- Connect the equipment into an outlet on a circuit different from that to which the receiver is connected.
- Consult the dealer or an experienced radio/TV technician for help

Warning: Changes or modifications not expressly approved by the party responsible for compliance could void the user's authority to operate this equipment.

This device contains licence-exempt transmitter(s)/ receiver(s) that comply with Innovation, Science and Economic Development Canada's licence-exempt RSS(s). Operation is subject to the following two conditions:

1. This device may not cause interference.
2. This device must accept any interference, including interference that may cause undesired operation of the device.

Le présent appareil est conforme aux CNR d'Industrie Canada applicables aux appareils radio exempts de licence. L'exploitation est autorisée aux deux conditions suivantes : (1) l'appareil ne doit pas produire de brouillage, et (2) l'utilisateur de l'appareil doit accepter tout brouillage radioélectrique subi, même si le brouillage est susceptible d'en compromettre le fonctionnement.

This device complies with Part 15 of the FCC Rules. Operation is subject to the following two conditions: (1) this device may not cause harmful interference, and (2) this device must accept any interference received, including interference that may cause undesired operation.

For Europe:

article number: 652901 www.torkglobal.com

For North America:

article number: 693940

FCC ID: 2ABK3-693940

Contains FCC ID: N7NWP77B

IC: 10866A-693940

Contains IC: 2417C-WP77B

www.torkusa.com

Version:
B



essity

Essity Hygiene and Health AB
SE-405 03 Göteborg, Sweden
Visiting address: Mölndals Bro 2, Mölndal

For North America:

Distributed by Essity HMS North America Inc
2929 Arch Street
Suite 2600
Philadelphia, PA 19104

www.essity.com, www.torkglobal.com

Made in Sweden