

iSmart-M8 User Guide

Introduction

iSmart-M8 is a portable storage device that allows you to wireless transfer digital media content, including music, photos and videos, from flash drive to your iOS devices. Since iSmart-M8 serves its own wireless network, it provides you WiFi hotspot to Internet. Its chargeable battery supports up to four hours of continuous access to your portable digital devices. iSmart-M8 is a perfect choice to make up the limited storage capacity problem of your iOS devices.

Requirements

iPhone 4 / iPhone 4s / iPhone 5 / iPhone 5c / iPhone 5s / iPad / iPad 2 / New iPad / iPad Mini

Supported File Types

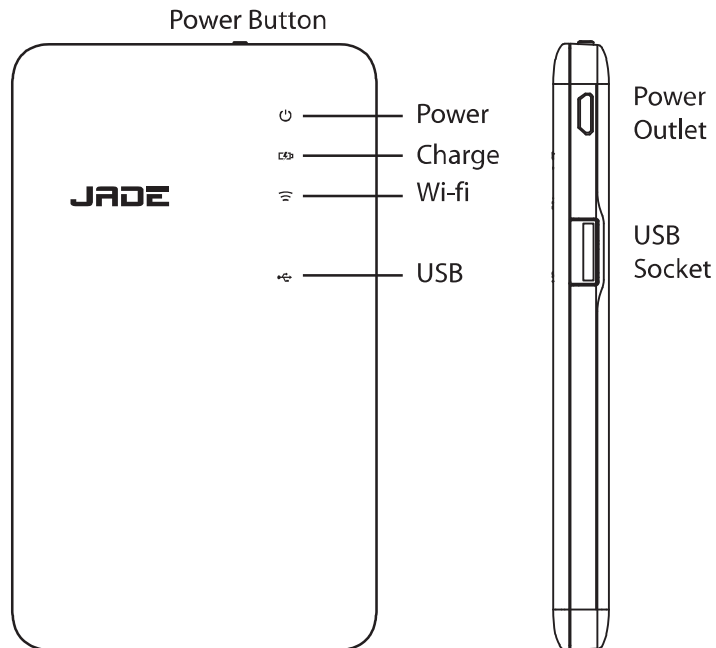
Audio: MP3/ WMA/ M4A

Video: AVI/ WMV/ MKV/ MP4 /ASF /MOV/ MPG/ FLV/ M4V

Image: JPG/ BMP / PNG/ JPEG/ GIF

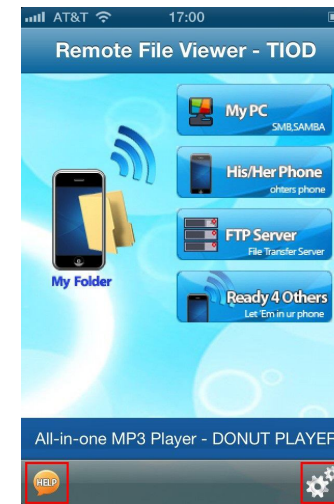
Docs: DOC/ DOCX/ PPT/ PPTX/ XLS/ XLSX/ PDF

About iSmart-M8



9. Help

◆ Tap “**TIOD**” and check “**set up**” or “**help**” if you have troubles using it.



Attention:

Please read the following carefully before using the iSmart-M8. Incorrect use of devices may cause damages and undesired operation.

- ◆ STAY AWAY from any liquid. We are not responsible for any damages caused by swamping.
- ◆ Make sure connect your iOS device to the Wi-Fi network “iSmart-M8” before you use the iSmart-M8.
- ◆ The Wi-Fi operation distance is limited within 10 meters.
- ◆ Do not charge iSmart-M8 under high temperature.
- ◆ Store and operate between 0-45 °C
- ◆ Increased temperature is normal when iSmart-M8 is working.

◆ Once you have finished the previous step, select “**WAN Setting**” and tap “**Scan**” and then select the WiFi you need to add in. Click “**Apply**” to finish the last step.



7. Turning to Router

◆ Simply connecting network cable to Ethernet port, the iSmart-M8 will turn into a router automatically.

8. Portable Charging Bank

◆ With a built-in Lithium chargeable battery, iSmart-M8 could be a portable power bank for your mobile, pad etc. electronic devices. Simply connect the device to the USB port through data line (included in the package).

◆ Capacity: 2500mAh

◆ Charging Time: 3~4 hours(adapter spec.: 1A)

☰ Power LED

Bright light will be on when initiating iSmart-M8, while it turns to a red when there is less than 10%-15% battery charge remaining.

☰ Charging Indicator LED

Red light is on when iSmart-M8 is charging.

☰ WiFi Indicator

Flashes continuously when broadcasting wireless network activity.

☰ USB Connection

Indication light will be on when iSmart-M8 connects to a flash drive.

Power Outlet

Charges iSmart-M8 with the attached USB charger wire.

USB Socket

Connects with USB storage devices. Read or download documents to iPhone/iPad. Charging mobile or other portable electronic product by connecting with data line.

Power Button

Allows you power on or off.

Default Setting

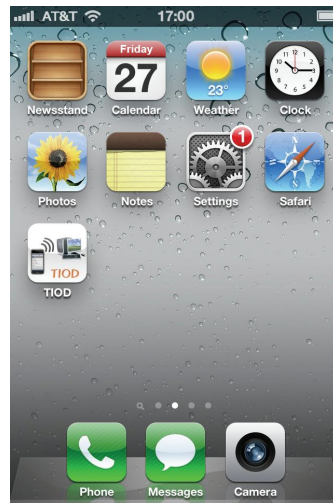
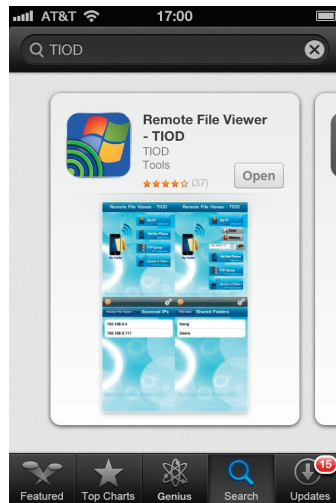
IP: 192.168.8.1

Login ID : admin

Login Password : admin

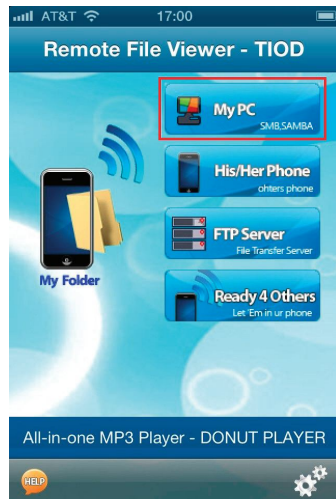
Operation Instruction

First of all, download and install free APP "TIOD" from App store.



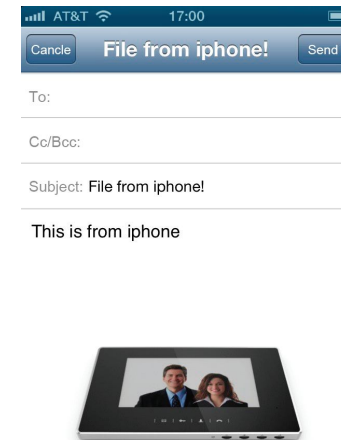
1. Read USB storage drive

- ◆ Connect iSmart-M8 to USB port. Reading is available when USB indicator flashes and keeps stable.
- ◆ Connect to iSmart-M8's WiFi signal "iSmart-M8" in your iOS device.
- ◆ Tap "TIOD" and select "My PC" then tap "Scan".



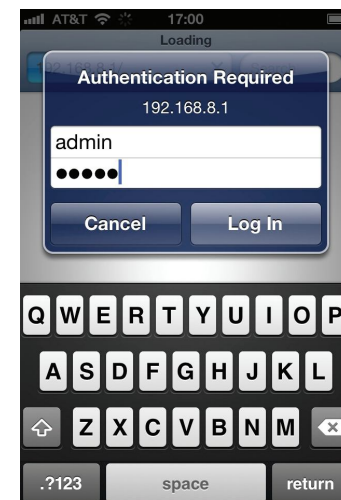
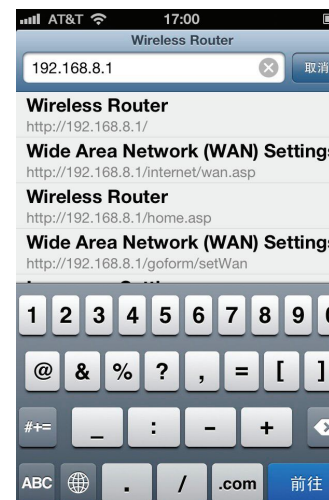
5. Mail Files as Attachment via iOS Devices with attachment

- ◆ Tap "TIOD" application and download the document to "My Folder".
- ◆ Open the document in "My Folder" and click "Mail with this". The attachment will be sent.



6. Set WiFi Hotspot

- ◆ Open a browser on you iOS devices or PC, and input the fixed IP of iSmart M8--"192.168.8.1". This is the same way like setting a wireless router. After doing this, it will prompt you to input the user name and password.
- (Default User Name: admin / Default Password: admin)**

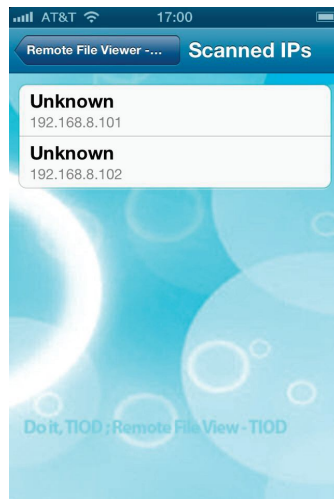


4. Access to Others' Data

- ◆ Tap **"TIOD"** and clicks **"His/Her Phone"** and clicks **"Scan"**.

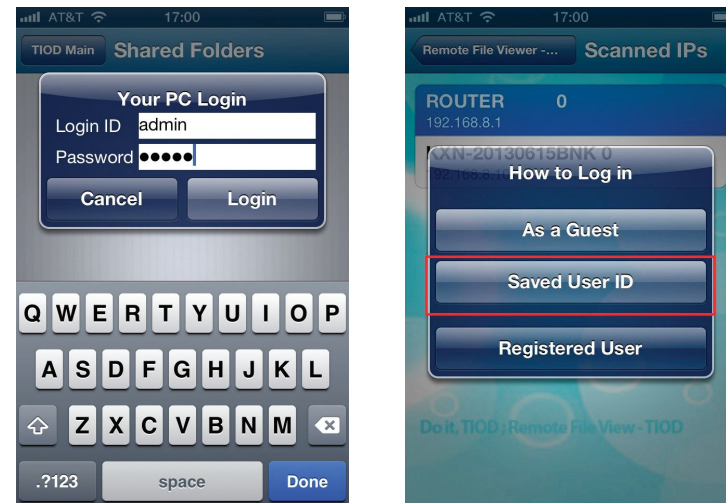


- ◆ Select the iOS device's IP address you need and direct to documents reading. The documents you can read are those saved in **"My Folder"** of TIOD.



- ◆ A router IP will appear. Tapping **"Router"** will lead you to the setup icon. At the first time, it will prompt you to enter your **"Login ID"** and **"Password"**. Once set up, select **"Saved User ID"**.

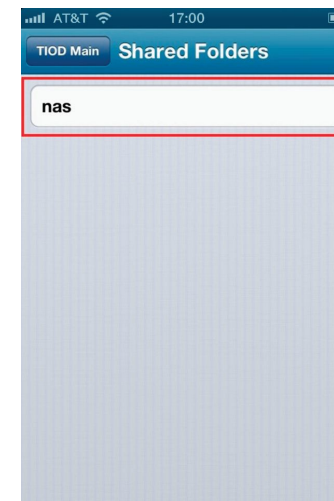
(Default Login ID: admin / Default Password: admin)

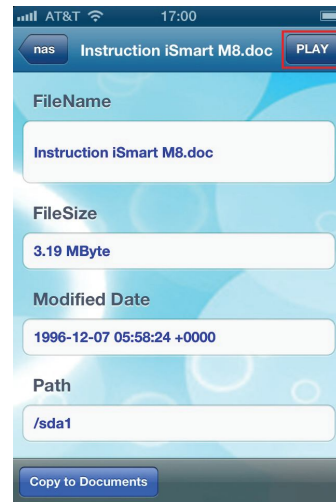
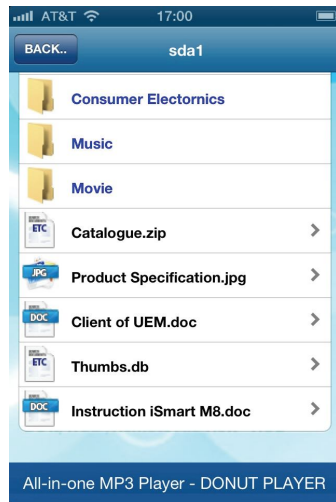


ATTENTION:

The Login ID and Password are not addressable; please remember them tightly if you made any change.

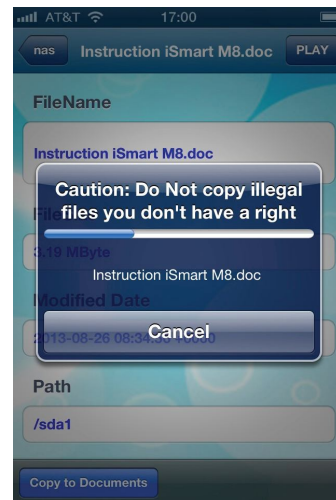
- ◆ Click **"nas"** to select the file that you want in the USB storage drive, and click **"PLAY"** to read it.



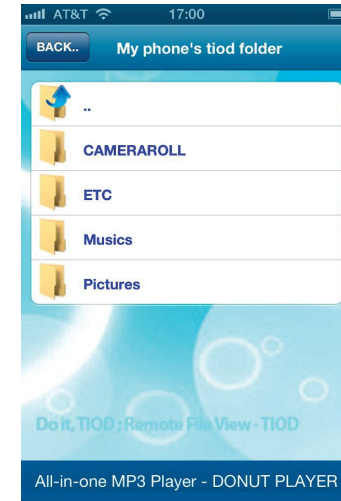
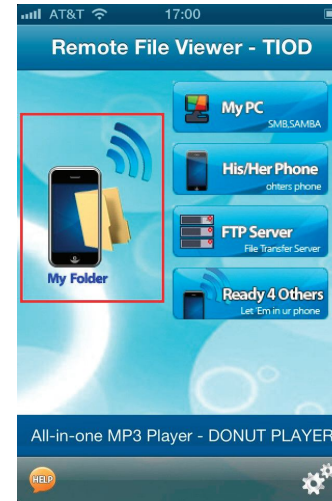


2. Download document to local iOS devices

- ◆ Tap **"TIOD"** and go to the document that needs to be downloaded and then click **"Copy to Documents"**



- ◆ Go back to main screen and click **"My Folder"**. This allows you to read the documents that have been downloaded.



3. Share Documents

- ◆ Tap **"TIOD"** application, click **"Ready 4 Others"** and a window will pop up showing your device IP. Inform your IP address to the person that you would like to share. Click **"Ready 4 Others"** again will close this function.



FCC STATEMENT

1. This device complies with Part 15 of the FCC Rules. Operation is subject to the following two conditions:

- (1) This device may not cause harmful interference.
- (2) This device must accept any interference received, including interference that may cause undesired operation.

Any changes or modifications not expressly approved by the party responsible for compliance could void the user's authority to operate this equipment.

NOTE: This equipment has been tested and found to comply with the limits for a Class B digital device, pursuant to Part 15 of the FCC Rules. These limits are designed to provide reasonable protection against harmful interference in a residential installation.

This equipment generates uses and can radiate radio frequency energy and, if not installed and used in accordance with the instructions, may cause harmful interference to radio communications. However, there is no guarantee that interference will not occur in a particular installation. If this equipment does cause harmful interference to radio or television reception, which can be determined by turning the equipment off and on, the user is encouraged to try to correct the interference by one or more of the following measures:

- Reorient or relocate the receiving antenna.

- Increase the separation between the equipment and receiver.

- Connect the equipment into an outlet on a circuit different from that to which the receiver is connected.

- Consult the dealer or an experienced radio/TV technician for help.