
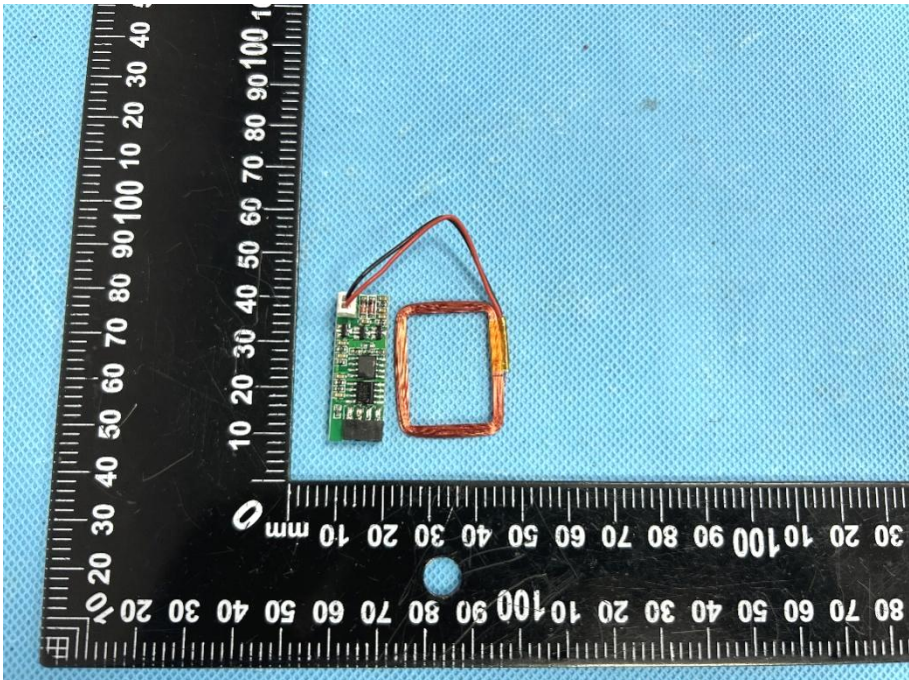
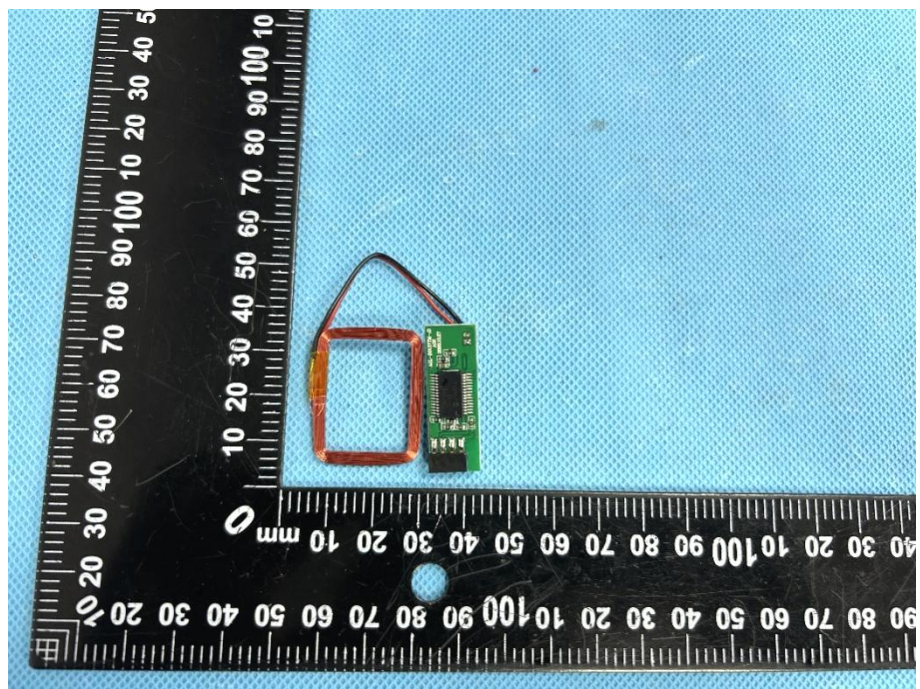


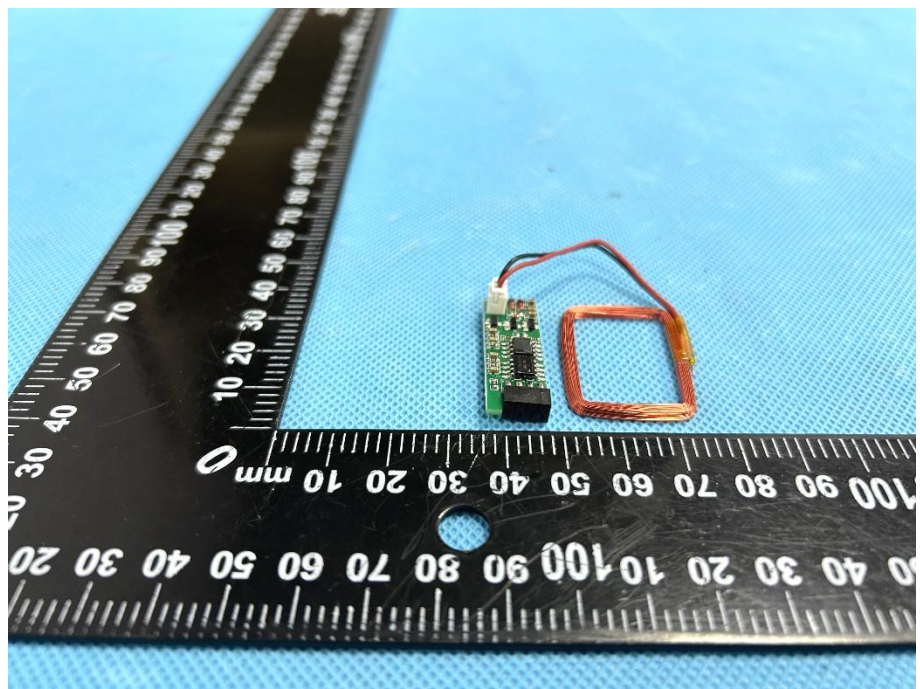
EXHIBIT 2 - EUT EXTERNAL PHOTOGRAPHS

<p>EUT View 1</p>	 A photograph showing three components of the EUT: a green printed circuit board (PCB) with various electronic components, a square-shaped copper coil, and a yellow oval keychain with a silver ring. The components are placed on a blue textured surface next to a black L-shaped ruler. The ruler has white markings in millimeters and centimeters. The PCB is approximately 20mm wide and 30mm long. The copper coil is approximately 20mm by 20mm. The keychain is approximately 30mm long and 15mm wide. The number '0001676341' is visible on the yellow keychain.
<p>EUT View 2</p>	 A photograph showing two components of the EUT: a green printed circuit board (PCB) and a square-shaped copper coil. The components are placed on a blue textured surface next to a black L-shaped ruler. The ruler has white markings in millimeters and centimeters. The PCB is approximately 20mm wide and 30mm long. The copper coil is approximately 20mm by 20mm.

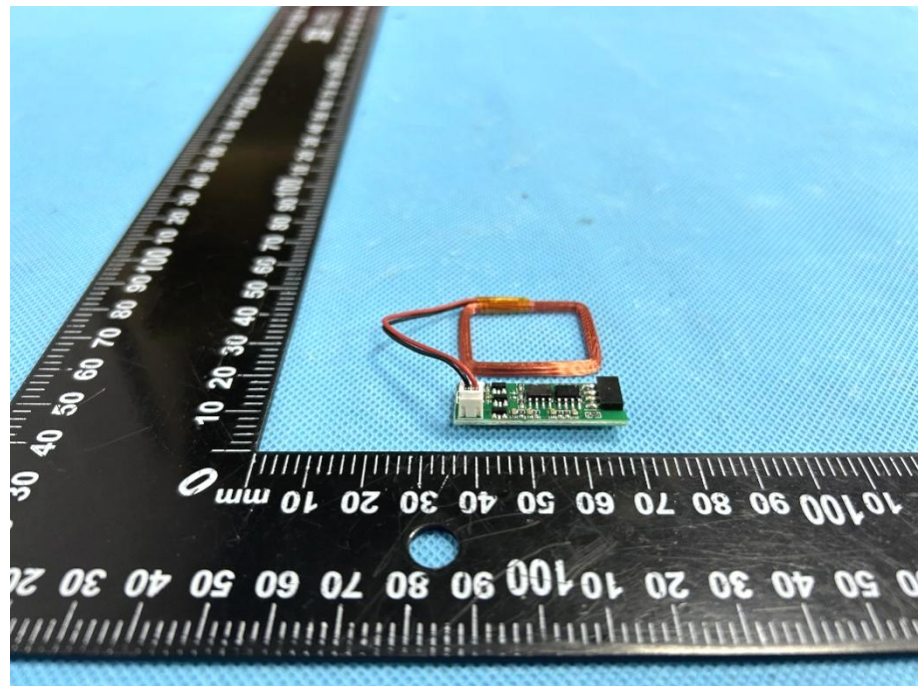
EUT View 3



EUT View 4



EUT View 5



EUT View 6

