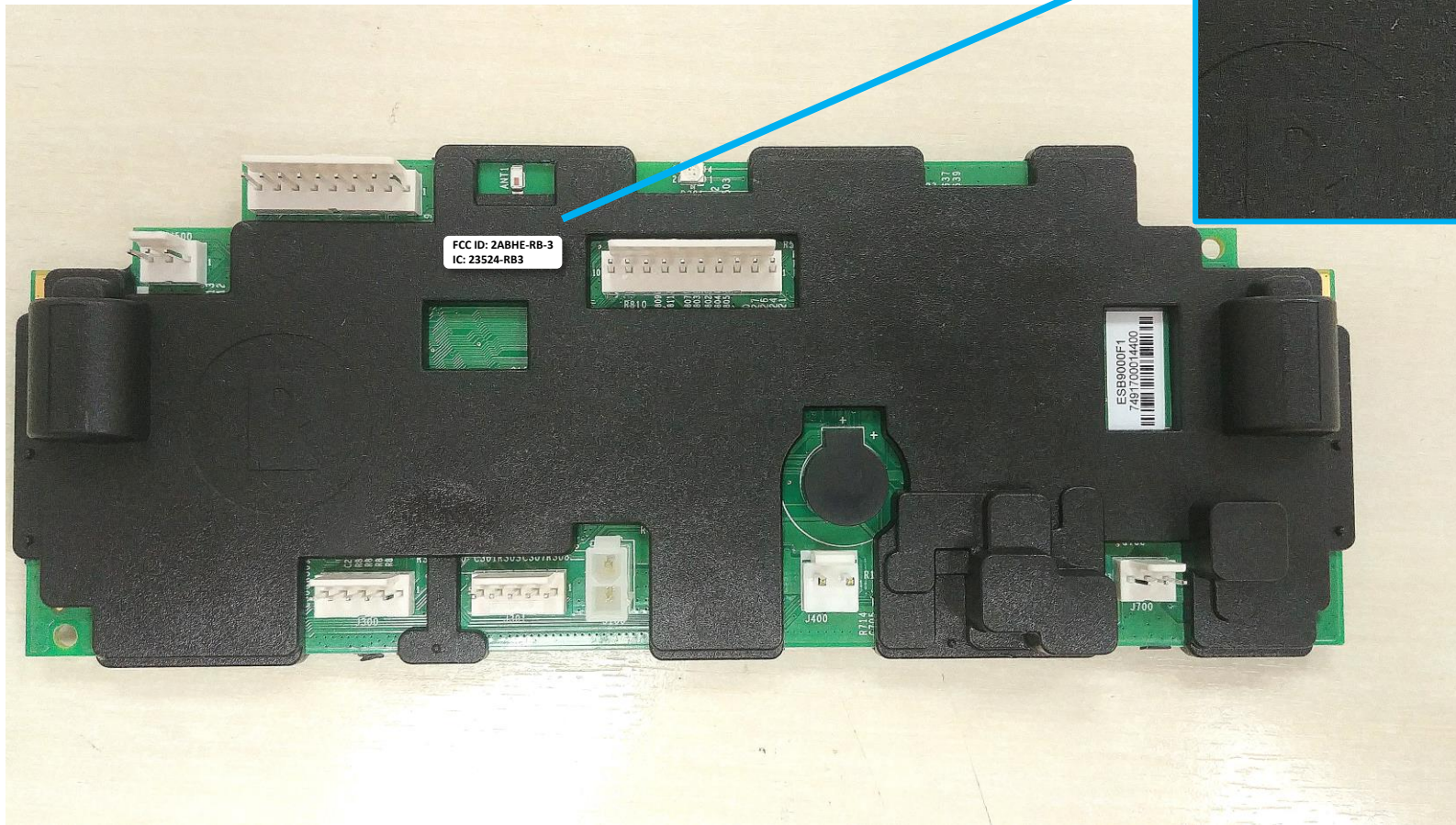


FCC/IC label Artworks

2018 Season

FCC/IC ID Art Work in ESB9000 in
RX12, RX20, RX50, XR1 150, XR1 300,
XR1 500 models



FCC ID: 2ABHE-RB-3
IC: 23524-RB3, ESB9000

Artwork for the FCC ID label placed on RX12, RX20, RX50, XR1 150, XR1 300, XR1 500 hosts

Contains FCC ID: 2ABHE-RB-3

This device complies with Part 15 of the FCC Rules.

Operation is subject to the following two conditions:

- (1) This device may not cause harmful interference and
- (2) This device must accept any interference received, including interference that may cause undesired operation.

Artwork for the IC ID label placed on RX12, RX20, RX50, XR1 150, XR1 300, XR1 500 hosts

Contains IC: 23524-RB3

This Class B digital apparatus complies with Canadian ICES-003.

Cet appareil numérique de la classe B est conforme à la norme NMB-003 du Canada.