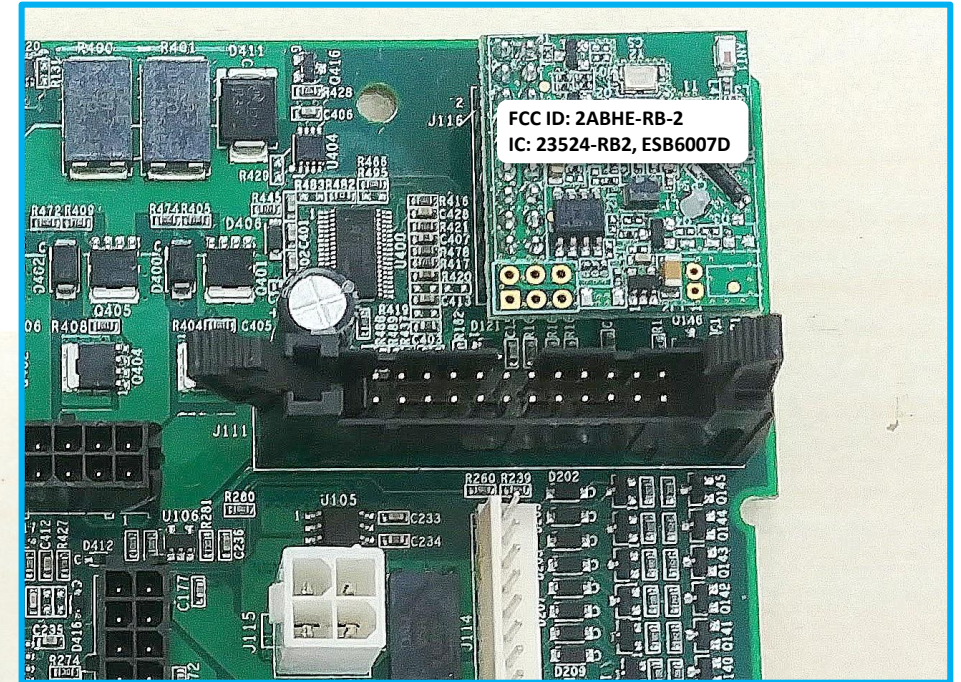
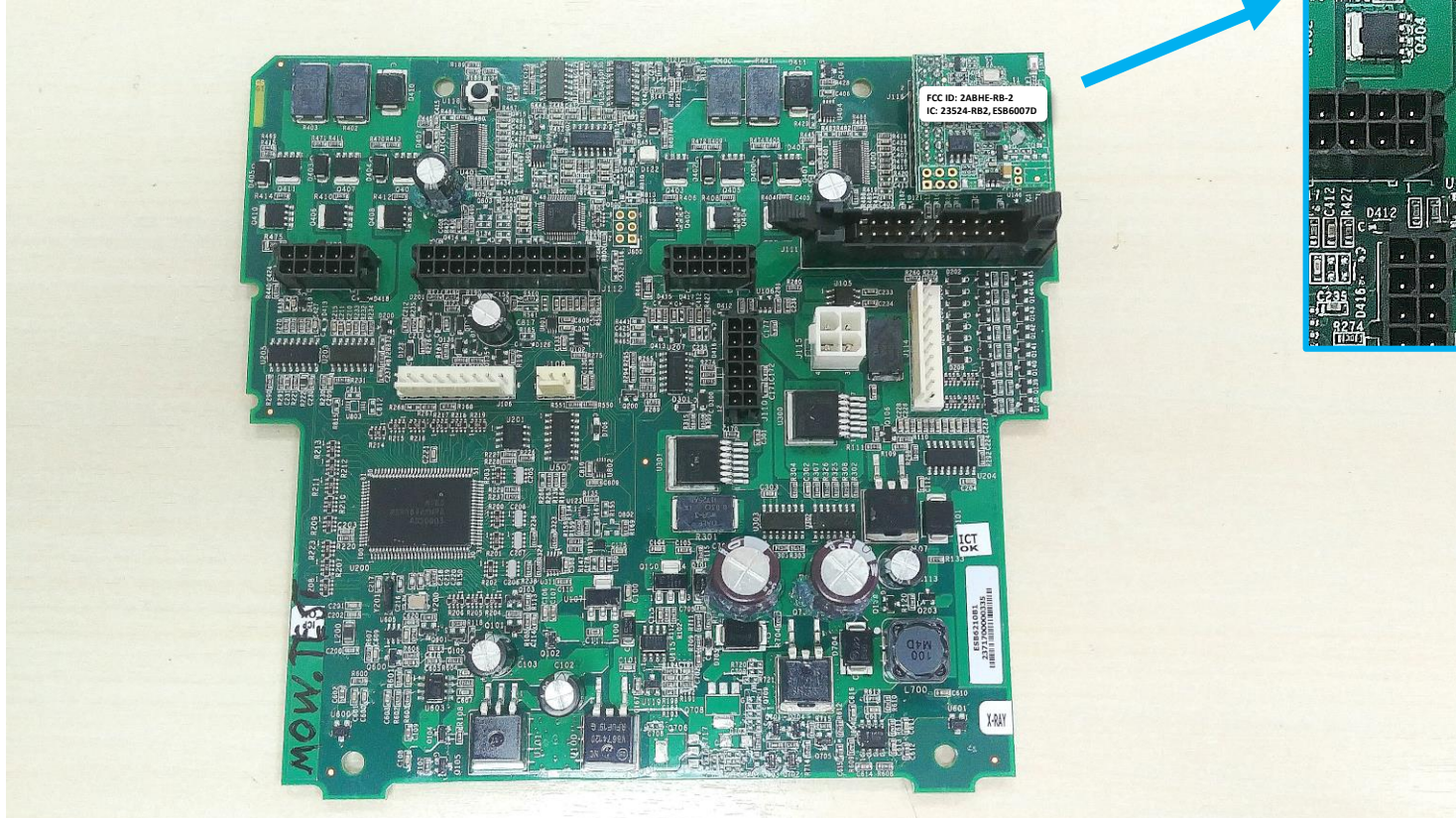


# FCC/IC Label Artworks

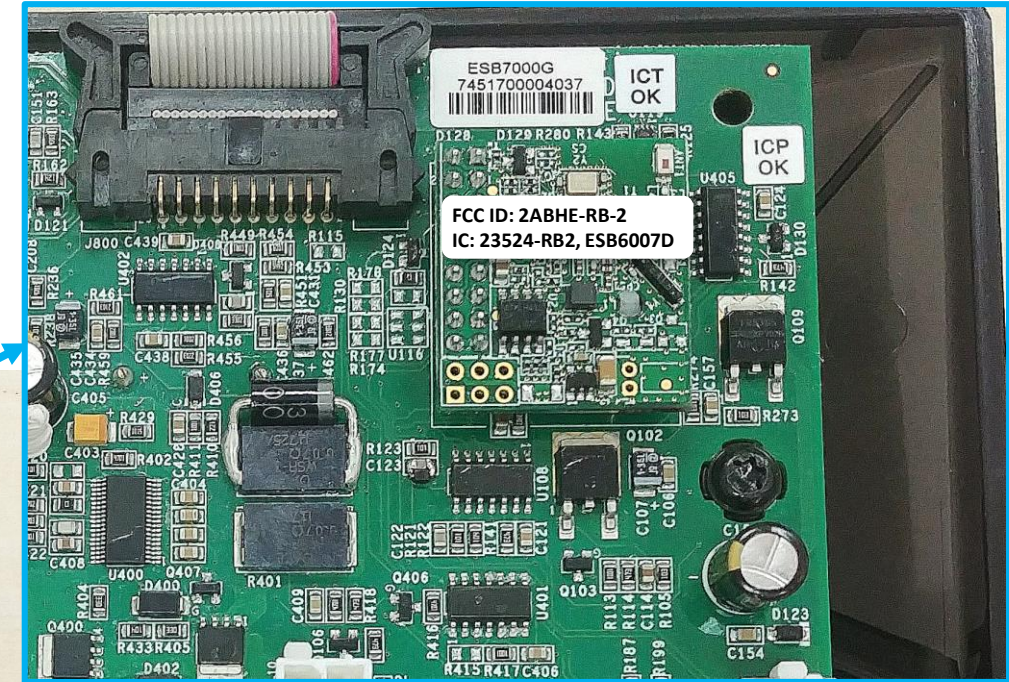
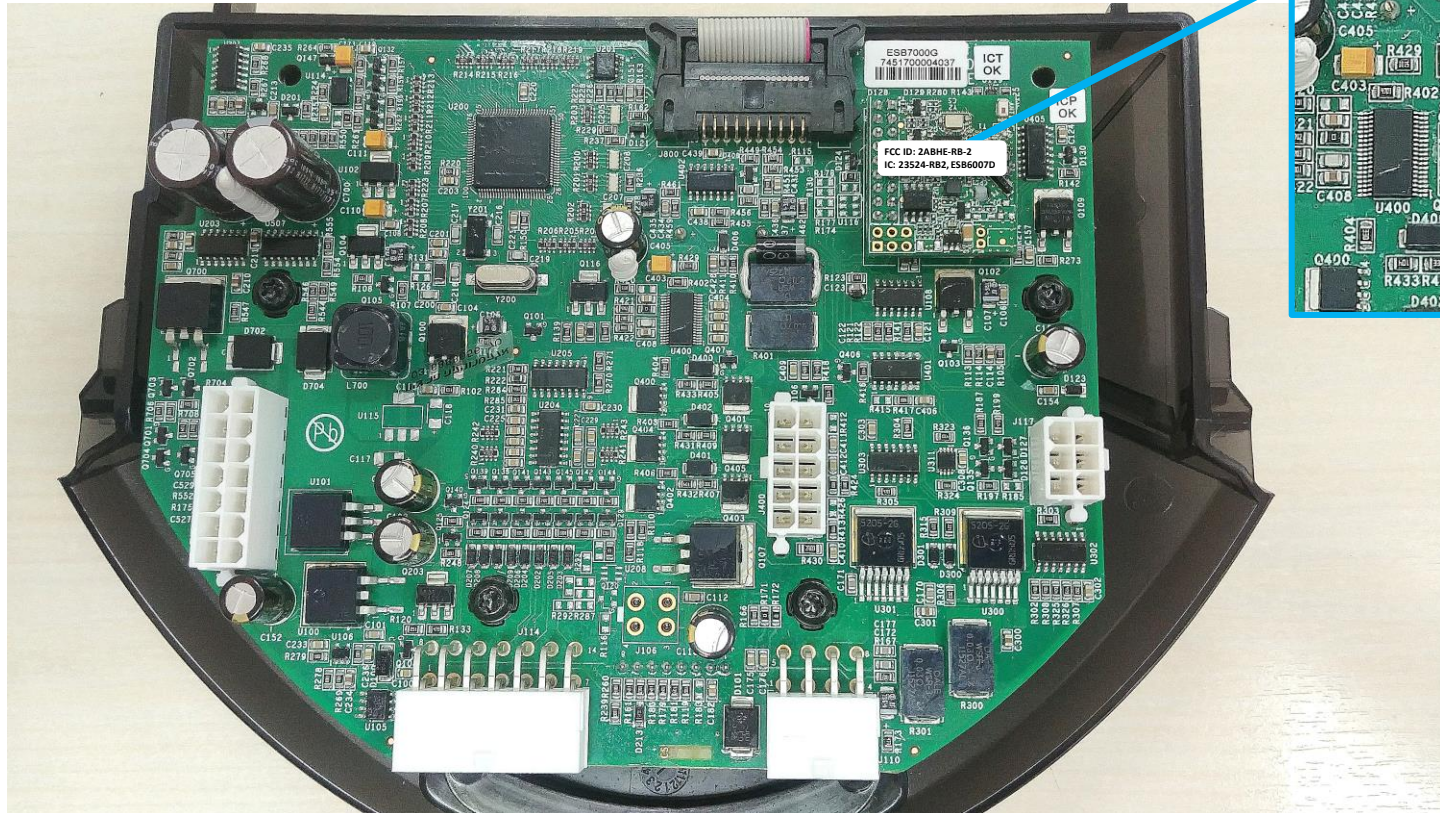
2018 Season

FCC/IC ID Label Art Work for the  
ESB6007D RF Module inside RS612,  
RS612p, RS622, RS630, XR3 3000,  
XR3 4000, XR3 5000 hosts



**FCC ID: 2ABHE-RB-2**  
**IC: 23524-RB2, ESB6007D**

FCC/IC ID Label Art Work for the  
ESB6007D RF Module inside RC304,  
RC306, RC306p, RC312, RC312p,  
XR2 1000, XR2 1500, XR2 2000 hosts



**FCC ID: 2ABHE-RB-2**  
**IC: 23524-RB2, ESB6007D**

FCC/IC ID Label Art Work for the ESB6007D RF Module inside CBS01 host (Base Station for RC306/RC306p/RC312/RC312p/XR2 1000/XR2 1500/XR2 2000 models)



**FCC ID: 2ABHE-RB-2**  
**IC: 23524-RB2, ESB6007D**

FCC ID: 2ABHE-RB-2  
IC: 23524-RB2, ESB6007D

Artwork for the FCC ID label placed on RC304, RC306, RC306p, RC312, RC312p, XR2 1000, XR2 1500, XR2 2000, RS612, RS612p, RS622, RS630, XR3 3000, XR3 4000, XR3 5000 hosts

Contains FCC ID: 2ABHE-RB-2

Contains FCC ID: XMR201707BG96

This device complies with Part 15 of the FCC Rules.

Operation is subject to the following two conditions:

- (1) This device may not cause harmful interference and
- (2) This device must accept any interference received, including interference that may cause undesired operation.

# Artwork for the FCC ID label placed on CBS01 host

Contains FCC ID: 2ABHE-RB-2

This device complies with Part 15 of the FCC Rules.

Operation is subject to the following two conditions:

- (1) This device may not cause harmful interference and
- (2) This device must accept any interference received,  
including interference that may cause undesired operation.

Artwork for the IC ID label placed on CBS01, RC304, RC306, RC306p, RC312, RC312p, XR2 1000, XR2 1500, XR2 2000, RS612, RS612p, RS622, RS630, XR3 3000, XR3 4000, XR3 5000 hosts

Contains IC: 23524-RB2

This Class B digital apparatus complies with Canadian ICES-003.

Cet appareil numérique de la classe B est conforme à la norme NMB-003 du Canada.