

# TEST REPORT

**Application No.:** SHEM1905013685CR  
**FCC ID:** 2ABGLSW78019  
**Applicant:** Pacific Cycle, Inc.  
**Address of Applicant:** 4902 Hammersley Road Madison, WI 53711 USA  
**Manufacturer:** Million Concept Electronic (Shenzhen) Co.Ltd  
**Address of Manufacturer:** No.98 Xiashanmen Rd, Songgang Town, Bao'an District, Shenzhen  
**Equipment Under Test (EUT):**  
**EUT Name:** Sch Wireless Bike Computer  
**Model No.:** SW78019-6  
**Standard(s) :** 47 CFR Part 15, Subpart C 15.209  
**Date of Receipt:** 2019-05-30  
**Date of Test:** 2019-06-28 to 2019-07-01  
**Date of Issue:** 2019-07-10

<b>Test Result:</b>	<b>Pass*</b>
---------------------	--------------

\* In the configuration tested, the EUT complied with the standards specified above.

*Parlam Zhan*

Parlam Zhan  
E&E Section Manager

The manufacturer should ensure that all products in series production are in conformity with the product sample detailed in this report. If the product in this report is used in any configuration other than that detailed in the report, the manufacturer must ensure the new system complies with all relevant standards. Any mention of SGS International Electrical Approvals or testing done by SGS International Electrical Approvals in connection with, distribution or use of the product described in this report must be approved by SGS International Electrical Approvals in writing.



Unless otherwise agreed in writing, this document is issued by the Company subject to its General Conditions of Service printed overleaf, available on request or accessible at <http://www.sgs.com/en/Terms-and-Conditions.aspx> and, for electronic format documents, subject to Terms and Conditions for Electronic Documents at <http://www.sgs.com/en/Terms-and-Conditions/Terms-e-Documents.aspx>. Attention is drawn to the limitation of liability, indemnification and jurisdiction issues defined therein. Any holder of this document is advised that information contained hereon reflects the Company's findings at the time of its intervention only and within the limits of Client's instructions, if any. The Company's sole responsibility is to its Client and this document does not exonerate parties to a transaction from exercising all their rights and obligations under the transaction documents. This document cannot be reproduced except in full, without prior written approval of the Company. Any unauthorized alteration, forgery or falsification of the content or appearance of this document is unlawful and offenders may be prosecuted to the fullest extent of the law. Unless otherwise stated the results shown in this test report refer only to the sample(s) tested and such sample(s) are retained for 30 days only.

**Attention: To check the authenticity of testing /inspection report & certificate, please contact us at telephone: (86-755) 8307 1443, or email: CN.Doccheck@sgs.com**



Revision Record			
Version	Description	Date	Remark
00	Original	2019-07-10	/

Authorized for issue by:			
			
		<hr/>	
		Bill Wu / Project Engineer	
			
		<hr/>	
		Parlam Zhan / Reviewer	

## 2 Test Summary

<b>Radio Spectrum Technical Requirement</b>				
<b>Item</b>	<b>Standard</b>	<b>Method</b>	<b>Requirement</b>	<b>Result</b>
Antenna Requirement	47 CFR Part 15, Subpart C 15.209	N/A	47 CFR Part 15, Subpart C 15.203	Customer Declaration

<b>Radio Spectrum Matter Part</b>				
<b>Item</b>	<b>Standard</b>	<b>Method</b>	<b>Requirement</b>	<b>Result</b>
20dB Bandwidth	47 CFR Part 15, Subpart C 15.209	ANSI C63.10 (2013) Section 6.9	47 CFR Part 15, Subpart C 15.215(c)	Pass
Radiated Emissions (9kHz-30MHz)	47 CFR Part 15, Subpart C 15.209	ANSI C63.10 (2013) Section 6.4&6.5	47 CFR Part 15, Subpart C 15.209(c)	Pass
Radiated Emissions (30MHz-1GHz)	47 CFR Part 15, Subpart C 15.209	ANSI C63.10 (2013) Section 6.4&6.5	47 CFR Part 15, Subpart C 15.209(c)	Pass



### 3 Contents

	Page
<b>1 COVER PAGE .....</b>	<b>1</b>
<b>2 TEST SUMMARY .....</b>	<b>3</b>
<b>3 CONTENTS.....</b>	<b>4</b>
<b>4 GENERAL INFORMATION .....</b>	<b>5</b>
4.1 DETAILS OF E.U.T. ....	5
4.2 DESCRIPTION OF SUPPORT UNITS.....	5
4.3 MEASUREMENT UNCERTAINTY .....	5
4.4 TEST LOCATION .....	6
4.5 TEST FACILITY .....	6
4.6 DEVIATION FROM STANDARDS .....	6
4.7 ABNORMALITIES FROM STANDARD CONDITIONS.....	6
<b>5 EQUIPMENT LIST .....</b>	<b>7</b>
<b>6 RADIO SPECTRUM TECHNICAL REQUIREMENT .....</b>	<b>8</b>
6.1 ANTENNA REQUIREMENT.....	8
<b>7 RADIO SPECTRUM MATTER TEST RESULTS .....</b>	<b>9</b>
7.1 20DB BANDWIDTH.....	9
7.2 RADIATED EMISSIONS (9KHZ-30MHZ) .....	11
7.3 RADIATED EMISSIONS (30MHZ-1GHZ) .....	13
<b>8 TEST SETUP PHOTOGRAPHS.....</b>	<b>17</b>
<b>9 EUT CONSTRUCTIONAL DETAILS.....</b>	<b>17</b>

## 4 General Information

### 4.1 Details of E.U.T.

Power supply:	DC 3V By CR2032
Test voltage:	DC 3V
Antenna Type	Loop Antenna
Modulation Type	ASK
Number of Channels	1
Operation Frequency	125KHz

### 4.2 Description of Support Units

The EUT has been tested as an independent unit.

### 4.3 Measurement Uncertainty

No.	Item	Measurement Uncertainty
1	Radio Frequency	$\pm 8.4 \times 10^{-8}$
2	Timeout	$\pm 2s$
3	Duty cycle	$\pm 0.37\%$
4	Occupied Bandwidth	$\pm 3\%$
5	RF conducted power	$\pm 0.6dB$
6	RF power density	$\pm 2.84dB$
7	Conducted Spurious emissions	$\pm 0.75dB$
8	RF Radiated power	$\pm 4.6dB$ (Below 1GHz)
		$\pm 4.1dB$ (Above 1GHz)
9	Radiated Spurious emission test	$\pm 4.2dB$ (Below 30MHz)
		$\pm 4.4dB$ (30MHz-1GHz)
		$\pm 4.8dB$ (1GHz-18GHz)
		$\pm 5.2dB$ (Above 18GHz)
10	Temperature test	$\pm 1^{\circ}C$
11	Humidity test	$\pm 3\%$
12	Supply voltages	$\pm 1.5\%$
13	Time	$\pm 3\%$

Note: The measurement uncertainty represents an expanded uncertainty expressed at approximately the 95% confidence level using a coverage factor of  $k=2$ .

#### 4.4 Test Location

All tests were performed at:

SGS-CSTC Standards Technical Services Co., Ltd. Shanghai Branch  
588 West Jindu Road, Xinqiao, Songjiang, 201612 Shanghai, China  
Tel: +86 21 6191 5666 Fax: +86 21 6191 5678

No tests were sub-contracted.

#### 4.5 Test Facility

The test facility is recognized, certified, or accredited by the following organizations:

- **CNAS (No. CNAS L0599)**

CNAS has accredited SGS-CSTC Standards Technical Services (Shanghai) Co., Ltd. to ISO/IEC 17025:2005 General Requirements for the Competence of Testing and Calibration Laboratories (CNAS-CL01 Accreditation Criteria for the Competence of Testing and Calibration Laboratories) for the competence in the field of testing.

- **NVLAP (Certificate No. 201034-0)**

SGS-CSTC Standards Technical Services (Shanghai) Co., Ltd. is accredited by the National Voluntary Laboratory Accreditation Program (NVLAP). Certificate No. 201034-0.

- **FCC –Designation Number: CN5033**

SGS-CSTC Standards Technical Services (Shanghai) Co., Ltd. has been recognized as an accredited testing laboratory.

Designation Number: CN5033. Test Firm Registration Number: 479755.

- **Innovation, Science and Economic Development Canada**

SGS-CSTC Standards Technical Services (Shanghai) Co., Ltd. EMC Laboratory has been recognized by ISED as an accredited testing laboratory.

IC Registration No.: 8617A-1. CAB identifier: CN0020.

- **VCCI (Member No.: 3061)**

The 3m Semi-anechoic chamber and Shielded Room of SGS-CSTC Standards Technical Services (Shanghai) Co., Ltd. has been registered in accordance with the Regulations for Voluntary Control Measures with Registration No.: R-13868, C-14336, T-12221, G-10830 respectively.

#### 4.6 Deviation from Standards

None

#### 4.7 Abnormalities from Standard Conditions

None

## 5 Equipment List

Equipment	Manufacturer	Model No	Inventory No	Cal Date	Cal Due Date
<b>Radiated Test</b>					
EMI test Receiver	R&S	ESU40	SHEM051-1	2018-12-20	2019-12-19
Spectrum Analyzer	R&S	FSP-30	SHEM002-1	2018-12-20	2019-12-19
Loop Antenna (9kHz-30MHz)	Schwarzbeck	FMZB1519	SHEM135-1	2017-04-10	2020-04-09
Antenna (25MHz-2GHz)	Schwarzbeck	VULB9168	SHEM048-1	2017-02-28	2020-02-27
Antenna (25MHz-3GHz)	Schwarzbeck	HL562	SHEM010-1	2017-02-28	2020-02-27
Horn Antenna (1-8GHz)	Schwarzbeck	HF906	SHEM009-1	2017-10-24	2020-10-23
Horn Antenna (1-18GHz)	Schwarzbeck	BBHA9120D	SHEM050-1	2017-01-14	2020-01-13
Horn Antenna (14-40GHz)	Schwarzbeck	BBHA 9170	SHEM049-1	2017-12-03	2020-12-02
Pre-amplifier (9kHz-2GHz)	CLAVIIO	BDLNA-0001	SHEM164-1	2018-08-13	2019-08-12
Pre-amplifier (1-18GHz)	CLAVIIO	BDLNA-0118	SHEM050-2	2018-08-13	2019-08-12
High-amplifier (14-40GHz)	Schwarzbeck	10001	SHEM049-2	2018-12-20	2019-12-19
Signal Generator	R&S	SMR40	SHEM058-1	2018-08-13	2019-08-12
Band Filter	LORCH	9BRX-875/X150	SHEM156-1	/	/
Band Filter	LORCH	13BRX-1950/X500	SHEM083-2	/	/
Band Filter	LORCH	5BRX-2400/X200	SHEM155-1	/	/
Band Filter	LORCH	5BRX-5500/X1000	SHEM157-2	/	/
High pass Filter	Wainwright	WHK3.0/18G	SHEM157-1	/	/
High pass Filter	Wainwright	WHKS1700	SHEM157-3	/	/
Semi/Fully Anechoic	ST	11*6*6M	SHEM078-2	2017-07-22	2020-07-21
RE test Cable	/	RE01, RE02, RE06	/	2018-12-26	2019-12-25

## 6 Radio Spectrum Technical Requirement

### 6.1 Antenna Requirement

#### 6.1.1 Test Requirement:

47 CFR Part 15, Subpart C 15.203

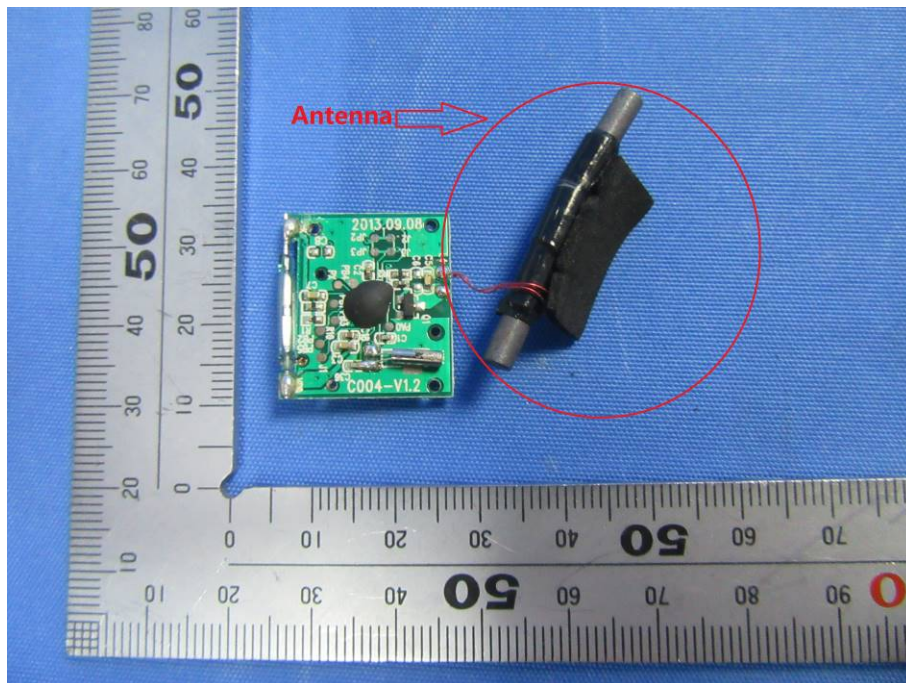
#### 6.1.2 Conclusion

Standard Requirement:

An intentional radiator shall be designed to ensure that no antenna other than that furnished by the responsible party shall be used with the device. The use of an antenna that uses a unique coupling to the intentional radiator, the manufacturer may design the unit permanently attached antenna or of an so that a broken antenna can be replaced by the user, but the use of a standard antenna jack or electrical connector is prohibited.

EUT Antenna:

The antenna is loop antenna and no consideration of replacement.





## 7 Radio Spectrum Matter Test Results

### 7.1 20dB Bandwidth

Test Requirement 47 CFR Part 15, Subpart C 15.215(c)  
Test Method: ANSI C63.10 (2013) Section 6.9  
Limit: N/A

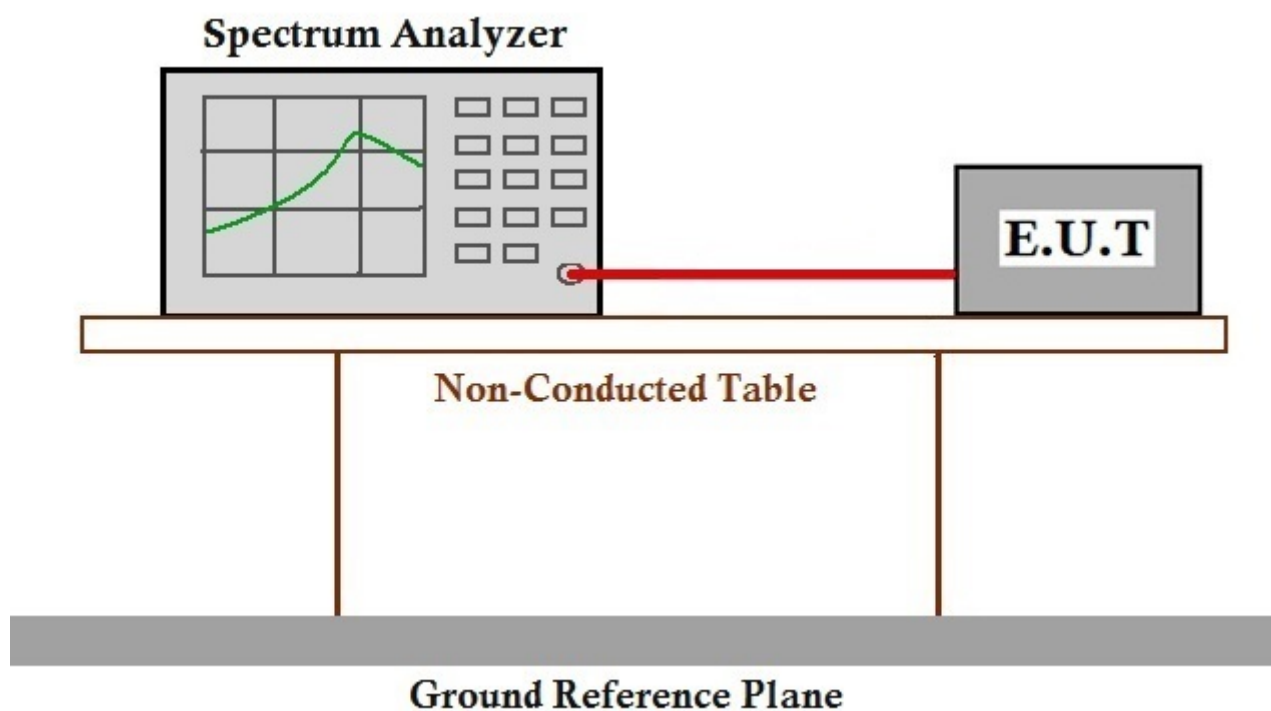
#### 7.1.1 E.U.T. Operation

Operating Environment:

Temperature: 20 °C Humidity: 50 % RH Atmospheric Pressure: 1010 mbar

Test mode a:TX mode\_Keep the EUT in transmitting with modulation mode.

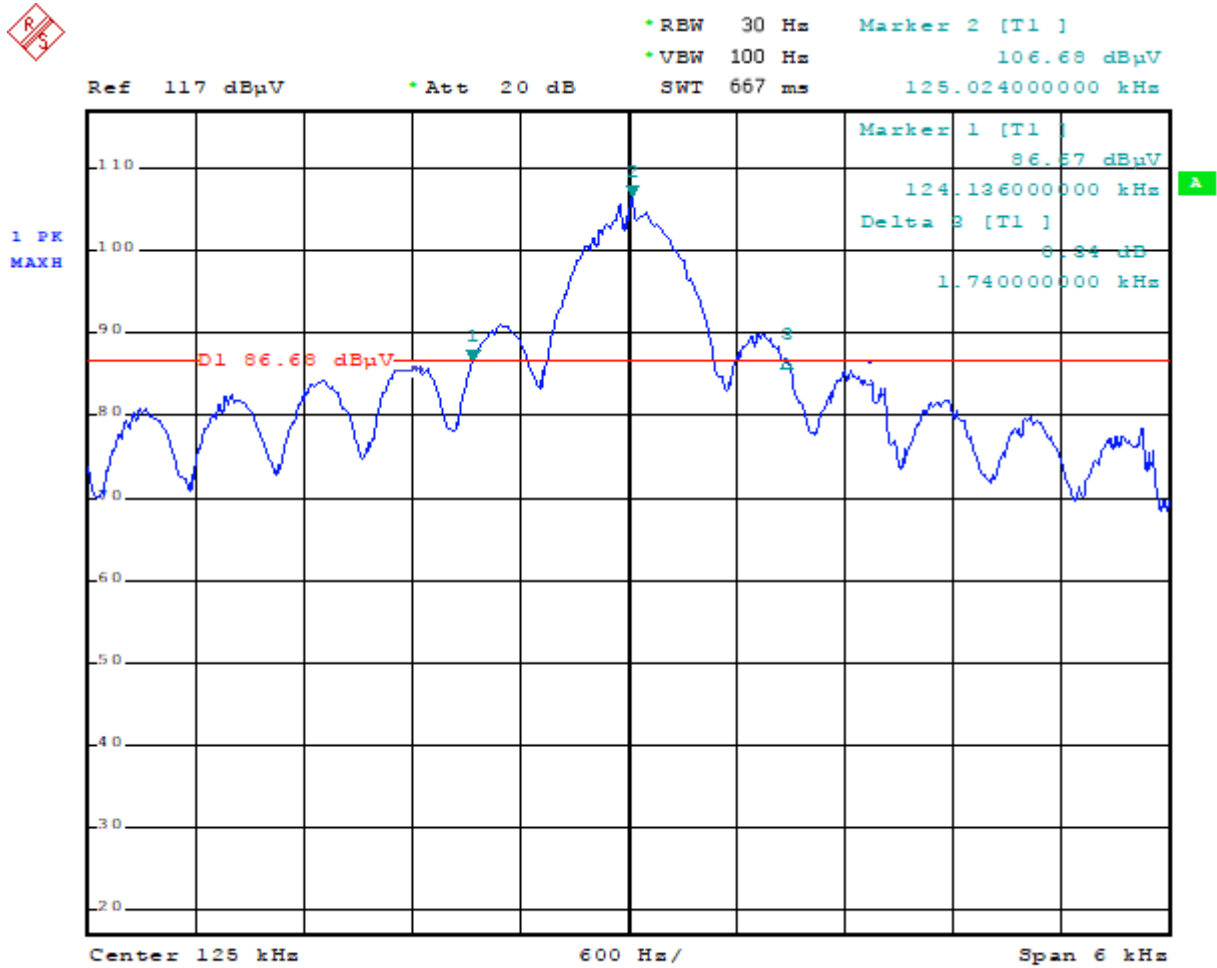
#### 7.1.2 Test Setup Diagram



**7.1.3 Measurement Procedure and Data**

20dB bandwidth (kHz)	Result
1.74	Pass

Test plot as follows:



## 7.2 Radiated Emissions (9kHz-30MHz)

Test Requirement 47 CFR Part 15, Subpart C 15.209(c)

Test Method: ANSI C63.10 (2013) Section 6.4&6.5

Limit:

Frequency (MHz)	Field strength ( $\mu\text{V}/\text{m}$ )	Measurement distance (m)	Limit ( $\text{dB}\mu\text{V}/\text{m}$ )	Limit @3m ( $\text{dB}\mu\text{V}/\text{m}$ )
0.009-0.490	2400/F(kHz)	300	48.5 ~ 13.8	128.5 ~ 93.8
0.490-1.705	24000/F(kHz)	30	33.8 ~ 23.0	73.8 ~ 63.0
1.705-30	30	30	29.5	69.5

### NOTE:

(1) For test distance other than what is specified, but fulfilling the requirements of section 15.31(f) (2) the field strength is calculated by adding additionally an extrapolation factor of 40dB/decade (inverse linear distance for field strength measurements).

So the Distance Extrapolation Factor in dB is  $40 \cdot \log(D_{\text{TEST}} / D_{\text{SPEC}})$  where  $D_{\text{TEST}}$  = Test Distance and  $D_{\text{SPEC}}$  = Specified Distance.

Field strength limit ( $\text{dB}\mu\text{V}/\text{m}$ )@test distance= Field strength limit ( $\text{dB}\mu\text{V}/\text{m}$ )@specified distance +Distance Extrapolation Factor

(2) The lower limit shall apply at the transition frequencies.

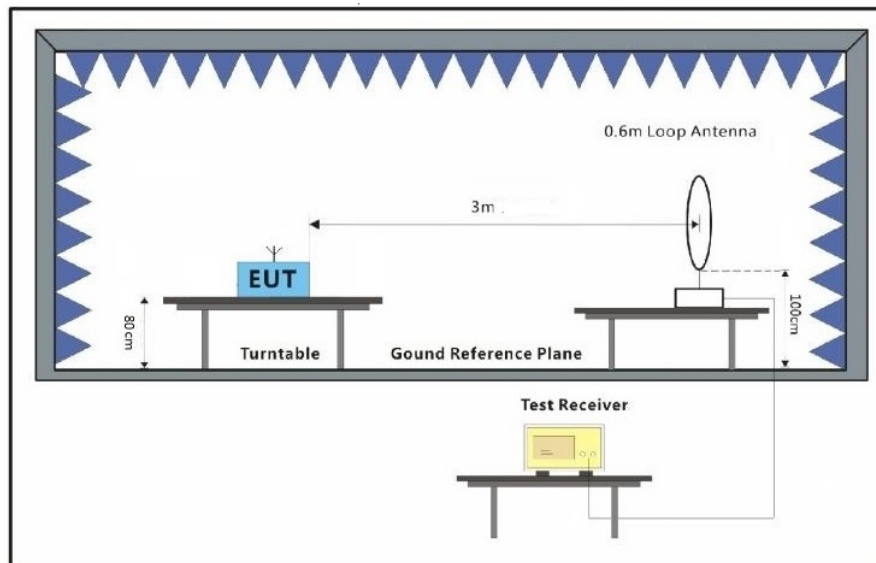
### 7.2.1 E.U.T. Operation

Operating Environment:

Temperature: 20 °C Humidity: 50 % RH Atmospheric Pressure: 1010 mbar

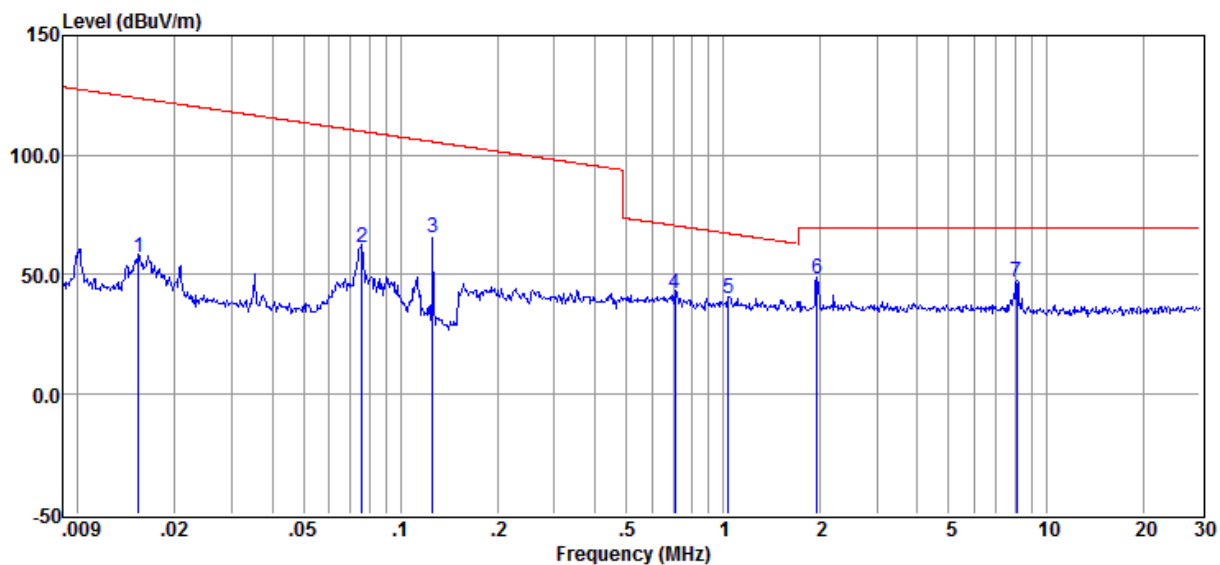
Test mode a:TX mode\_Keep the EUT in transmitting with modulation mode.

### 7.2.2 Test Setup Diagram



**7.2.3 Measurement Procedure and Data**

For testing performed with the loop antenna, the center of the loop was positioned 1 m above the ground and positioned with its plane vertical at the specified distance from the EUT. During testing the loop was rotated about its vertical axis for maximum response at each azimuth and also investigated with the loop positioned in the horizontal plane. Only the worst position of vertical was shown in the report.



Item	Freq.	Read Level	Antenna Factor	Cable Loss	Result Level@3m	Result Level@S PEC	Limit Line@SP EC	Over Limit	Detector
(Mark)	(MHz)	(dBμV)	(dB/m)	(dB)	(dBuV/m)	(dBuV/m)	(dBuV/m)	(dB)	
1	0.015	37.76	19.64	0.02	57.42	-22.58	47.5	-70.08	QP
2	0.076	41.88	19.73	0.03	61.64	-18.36	36.65	-55.01	QP
3	0.126	45.68	19.86	0.06	65.60	-14.4	22.83	-37.23	Peak
4	0.707	22.16	20.20	0.04	42.40	2.4	29.74	-27.34	QP
5	1.035	19.48	20.28	0.07	39.83	-0.17	29.5	-29.67	QP
6	1.949	27.90	20.20	-0.02	48.08	8.08	29.5	-21.42	QP
7	8.127	26.63	19.81	0.20	46.64	6.64	29.5	-22.86	QP

Result Level = Read Level + Antenna Factor + Cable loss - Preamp Factor

### 7.3 Radiated Emissions (30MHz-1GHz)

Test Requirement 47 CFR Part 15, Subpart C 15.209(c)  
Test Method: ANSI C63.10 (2013) Section 6.4&6.5

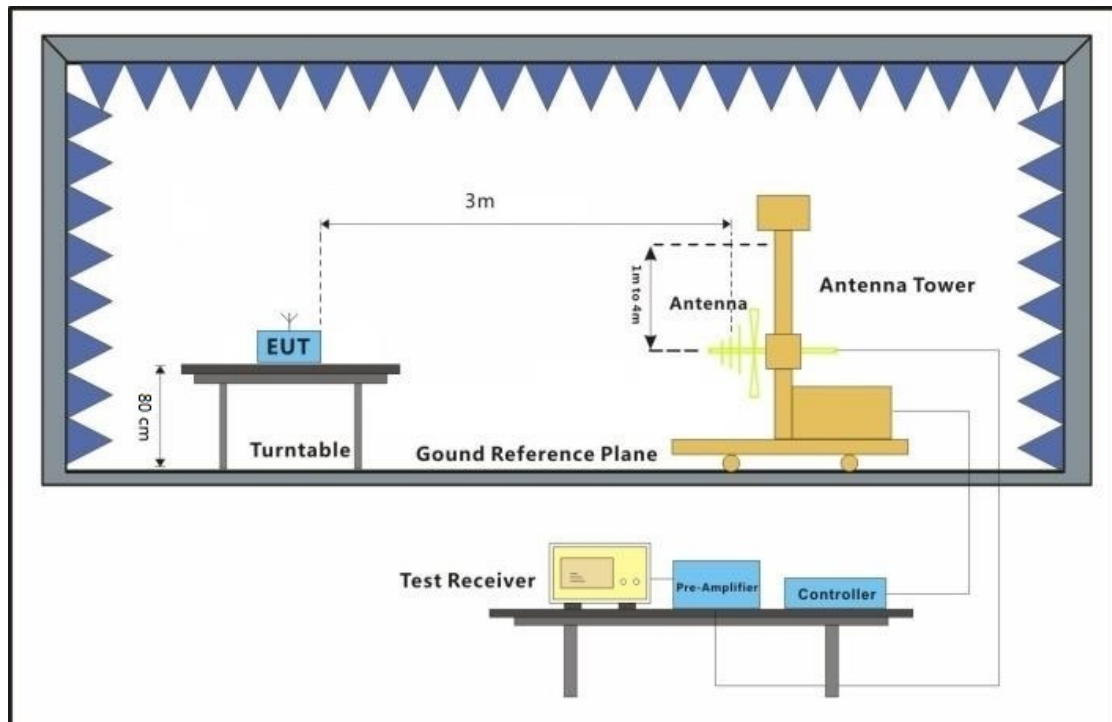
#### 7.3.1 E.U.T. Operation

Operating Environment:

Temperature: 20 °C Humidity: 50 % RH Atmospheric Pressure: 1010 mbar

Test mode a:TX mode\_Keep the EUT in transmitting with modulation mode.

#### 7.3.2 Test Setup Diagram



#### 7.3.3 Limit

Frequency (MHz)	Field strength ( $\mu\text{V}/\text{m}$ )	Measurement distance (m)	Limit ( $\text{dB}\mu\text{V}/\text{m}$ )	Limit @3m ( $\text{dB}\mu\text{V}/\text{m}$ )
30-88	100	3	40.0	40.0
88-216	150	3	43.5	43.5
216-960	200	3	46.0	46.0
960-1000	500	3	54.0	54.0

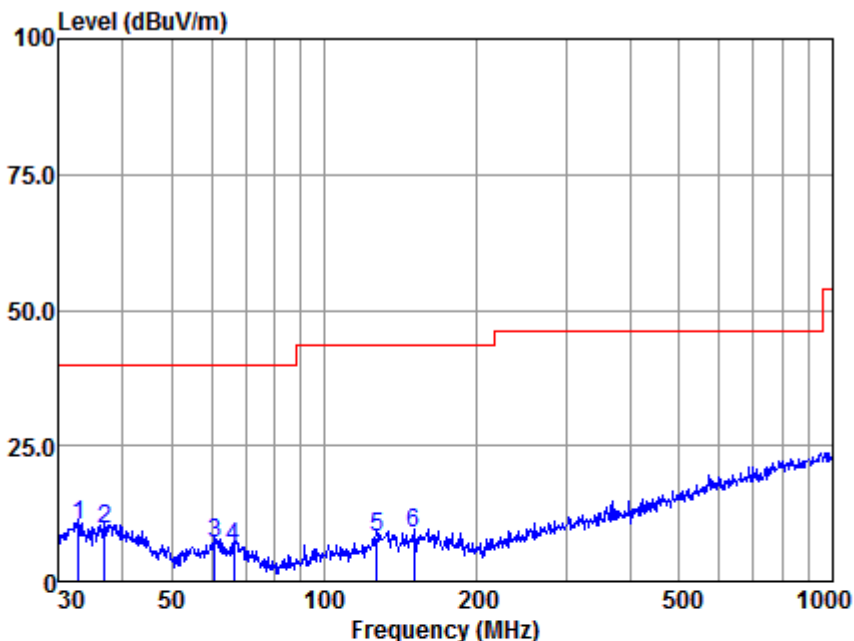
#### **7.3.4 Measurement Procedure and Data**

- a. The EUT was placed on the top of a rotating table 0.8 meters above the ground for below 1GHz at a 3 meter semi-anechoic chamber. The table was rotated 360 degrees to determine the position of the highest radiation.
- b. The EUT was set 3 meters away from the interference-receiving antenna, which was mounted on the top of a variable-height antenna tower.
- c. The antenna height is varied from one meter to four meters above the ground to determine the maximum value of the field strength. Both horizontal and vertical polarizations of the antenna are set to make the measurement.
- d. For each suspected emission, the EUT was arranged to its worst case and then the antenna was tuned to heights from 1 meter to 4 meters (for the test frequency of below 30MHz, the antenna was tuned to heights 1 meter) and the rotatable table was turned from 0 degrees to 360 degrees to find the maximum reading.
- e. The test-receiver system was set to Peak Detect Function and Specified Bandwidth with Maximum Hold Mode.
- f. If the emission level of the EUT in peak mode was 10dB lower than the limit specified, then testing could be stopped and the peak values of the EUT would be reported. Otherwise the emissions that did not have 10dB margin would be re-tested one by one using peak, quasi-peak or average method as specified and then reported in a data sheet.
- g. Test the EUT in the lowest channel,the middle channel,the Highest channel
- h. The radiation measurements are performed in X, Y, Z axis positioning for Transmitting mode,And found the X axis positioning which it is worse case.
- i. Repeat above procedures until all frequencies measured was complete.

Remark: Level= Read Level+ Cable Loss+ Antenna Factor- Preamp Factor



Mode:a; Polarization:Horizontal



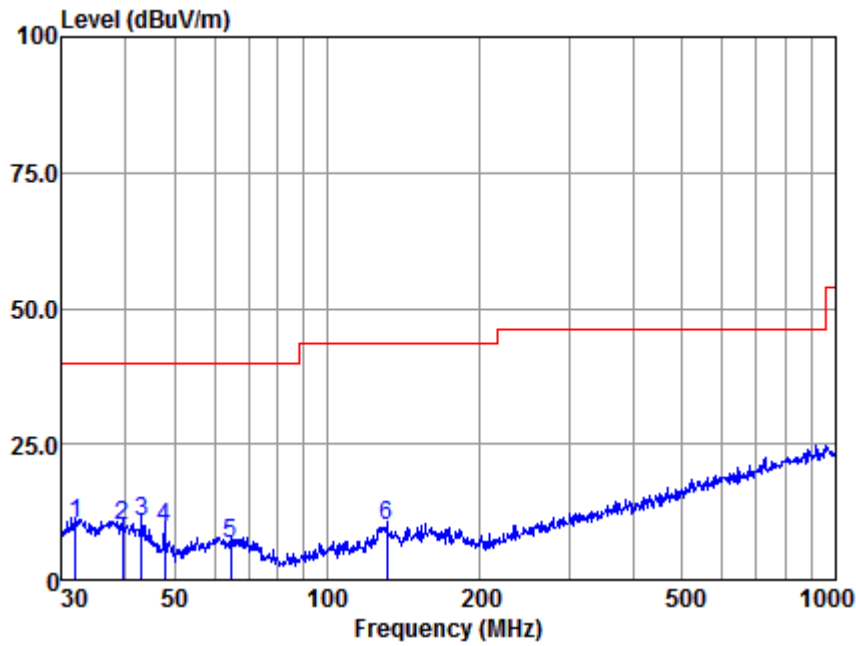
Antenna Polarity :HORIZONTAL

Test mode :a

	Read	Antenna	Cable	Preamp	Emission	Limit	Over	
Freq	Level	Factor	Loss	Factor	Level	Line	Limit	Remark
MHz	dBuV	dB/m	dB	dB	dBuV/m	dBuV/m	dB	
1	32.749	36.73	15.61	0.39	42.36	10.37	40.00	-29.63 QP
2	36.895	35.74	16.03	0.35	42.34	9.78	40.00	-30.22 QP
3	60.918	36.30	12.49	0.59	42.32	7.06	40.00	-32.94 QP
4	66.266	36.27	11.84	0.62	42.29	6.44	40.00	-33.56 QP
5	126.772	37.02	11.98	1.39	42.27	8.12	43.50	-35.38 QP
6	150.011	37.65	11.99	1.36	42.23	8.77	43.50	-34.73 QP

Note:Emission Level=Read Level+Antenna Factor+Cable loss-Preamp Factor

Mode:a; Polarization:Vertical



Antenna Polarity :VERTICAL

Test mode :a

	Read	Antenna	Cable	Preamp	Emission	Limit	Over	
Freq	Level	Factor	Loss	Factor	Level	Line	Limit	Remark
MHz	dBuV	dB/m	dB	dB	dBuV/m	dBuV/m	dB	
1	31.955	36.77	15.53	0.45	42.37	10.38	40.00	-29.62 QP
2	39.437	35.69	16.25	0.30	42.33	9.91	40.00	-30.09 QP
3	43.050	38.25	14.44	0.37	42.33	10.73	40.00	-29.27 QP
4	47.826	39.73	11.76	0.44	42.33	9.60	40.00	-30.40 QP
5	64.659	36.39	12.02	0.61	42.30	6.72	40.00	-33.28 QP
6	131.297	38.08	12.54	1.42	42.26	9.78	43.50	-33.72 QP

Note:Emission Level=Read Level+Antenna Factor+Cable loss-Preamp Factor





## **8 Test Setup Photographs**

Refer to the < Test Setup photos-FCC>.

## **9 EUT Constructional Details**

Refer to the < External Photos > & < Internal Photos >.

**- End of the Report -**