



Hearing Aid Compatibility (HAC) T-Coil Test Report

APPLICANT : Reliance Communications LLC
PRODUCT NAME : Orbic Joy 2
MODEL NAME : RC656L
BRAND NAME : Orbic
FCC ID : 2ABGH-RC656L
STANDARD(S) : FCC 47 CFR Part 20(20.19)
ANSI C63.19-2019
RECEIPT DATE : 2024-03-01
TEST DATE : 2024-03-29 to 2024-04-07
ISSUE DATE : 2024-05-22



Edited by: Xie Yiyun
Xie Yiyun (Rapporteur)
Approved by: Gan Yue ming
Gan Yueming (Supervisor)

NOTE: This document is issued by Shenzhen Morlab Communications Technology Co., the test report shall not be reproduced except in full without prior written permission of the company. The test results apply only to the particular sample(s) tested and to the specific tests carried out which is available on request for validation and information confirmed at our website.





DIRECTORY

- 1. Statement of T-Coil Measurement.....4
- 2. Technical Information5
 - 2.1. Applicant and Manufacturer Information5
 - 2.2. Equipment under Test (EUT) Description.....5
 - 2.3. Photographs of the EUT7
 - 2.4. Applied Reference Documents7
- 3. Air Interface and Operating Mode8
- 4. T-Coil Test Requirements and Restrictions9
 - 4.1. T-Coil Coupling Qualifying Field Strengths9
 - 4.2. Desired ABM signal and Undesired ABM Field Qualification Requirements9
 - 4.3. Frequency Response10
- 5. HAC (T-Coil) Measurement System.....11
 - 5.1. T-Coil Measurement Setup11
 - 5.2. Base Station Gain Factor.....12
 - 5.3. T-Coil Measurement Reference Plane.....13
 - 5.4. System Validation.....14
- 6. T-Coil Test Procedure.....15
 - 6.1. General Description15
 - 6.2. T-Coil Test Flow.....17
- 7. Test Equipment List19
- 8. Summary Test Results.....20
 - 8.1. Test Guidance20
 - 8.2. Test Results21
- 9. Uncertainty Assessment26



Annex A General Information.....27
Annex B Test Setup Photos28
Annex C Plots of T-Coil Test Results28
Annex D DASYS Calibration Certificate.....28

| Change History | | |
|-----------------------|-------------|--------------------------|
| Version | Date | Reason for change |
| 1.0 | 2024-05-22 | First edition |
| | | |



1. Statement of T-Coil Measurement

The lowest contiguous point count of primary group and secondary group found during test as bellows:

| Air Interface | Primary Group Contiguous Point Count | Secondary Group Contiguous Point Count | Frequency Response |
|-----------------|---|---|-----------------------|
| GSM CMRS Voice | 220 | 396 | PASS |
| UMTS CMRS Voice | 336 | 593 | PASS |
| VoLTE | 285 | 490 | PASS |
| VoWiFi | 271 | 406 | PASS |

Note:

1. This device is in compliance with compliance with T-Coil requirement specified in FCC 47 CFR Part 20.19 and tested in accordance with the measurement methods and procedures specified in ANSI C63.19-2019 and FCC KDB publications.
2. When the test result is a critical value, we will use the measurement uncertainty give the judgment result based on the 95% confidence intervals.



2. Technical Information

Note: Provide by applicant.

2.1. Applicant and Manufacturer Information

| | |
|------------------------------|---|
| Applicant: | Reliance Communications LLC |
| Applicant Address: | 555 Wireless Blvd. Hauppauge, NY 11788, USA |
| Manufacturer: | SHENZHEN CHINO-E COMMUNICATION CO., LTD |
| Manufacturer Address: | No. 503, 505, 5th Floor, Hengjiang Mansion, Intersection of Bulong Road and Renmin Road, Longhua New District, Shenzhen, China. |

2.2. Equipment under Test (EUT) Description

| | |
|--------------------------|---|
| Product Name: | Orbic Joy 2 |
| EUT IMEI: | 351230970000020 |
| Hardware Version: | V1.0 |
| Software Version: | RC656L_V1.0.15_BLB |
| Frequency Bands: | GSM 850: 824 MHz ~ 849 MHz GSM 1900: 1850 MHz ~ 1910 MHz WCDMA Band II: 1850 MHz ~ 1910 MHz WCDMA Band IV: 1710 MHz ~ 1755 MHz WCDMA Band V: 824 MHz ~ 849 MHz LTE Band 2: 1850 MHz ~ 1910 MHz LTE Band 4: 1710 MHz ~ 1755 MHz LTE Band 5: 824 MHz ~ 849 MHz LTE Band 12: 699 MHz ~ 716 MHz LTE Band 17: 704 MHz ~ 716 MHz LTE Band 66: 1710 MHz ~ 1780 MHz WLAN 2.4GHz: 2412 MHz ~ 2462 MHz WLAN 5.2GHz: 5180 MHz ~ 5240 MHz WLAN 5.3GHz: 5260 MHz ~ 5320 MHz WLAN 5.5GHz: 5500 MHz ~ 5720 MHz WLAN 5.8GHz: 5745 MHz ~ 5825 MHz Bluetooth: 2402 MHz ~ 2480 MHz |
| Modulation Mode: | GSM/GPRS: GMSK EDGE: 8PSK WCDMA: QPSK, 16QAM LTE: QPSK, 16QAM, 64QAM 802.11b: DSSS |



| | |
|-------------------------------|--|
| | 802.11a/g/n-HT20/HT40/ac-VHT20/40/80: OFDM BR+EDR: GFSK(1Mbps), $\pi/4$ -DQPSK(2Mbps), 8-DPSK(3Mbps) Bluetooth LE: GFSK(1Mbps) |
| Antenna type: | WWAN: PIFA Antenna WLAN: PIFA Antenna Bluetooth: PIFA Antenna |
| VoLTE Mode: | Support |
| VoWi-Fi Mode: | Support |
| SIM Cards Description: | GSM+WCDMA+LTE |

Note: For more detailed description, please refer to specification or user manual supplied by the applicant and/or manufacturer.



2.3. Photographs of the EUT

Please refer to the External Photos for the Photos of the EUT

2.4. Applied Reference Documents

Leading reference documents for testing:

| No. | Identity | Document Title | Method determination Remark |
|-----|----------------------------|---|-----------------------------|
| 1 | FCC 47 CFR Part 20 (20.19) | Hearing aid-compatible mobile handsets | No deviation |
| 2 | ANSI C63.19-2019 | American National Standard Methods of Measurement of Compatibility between Wireless Communications Devices and Hearing Aids | No deviation |
| 3 | KDB 285076 D01v06r04 | HAC Guidance | No deviation |
| 4 | KDB 285076 D02v04 | T-Coil testing for CMRS IP | No deviation |
| 5 | KDB 285076 D03v01r06 | HAC FAQ | No deviation |

Note: Additions to, deviation, or exclusions from the method shall be judged in the "method determination" column of add, deviate or exclude from the specific method shall be explained in the "Remark" of the above table.



3. Air Interface and Operating Mode

| Air Interface | Band | Transport Type | Simultaneous Transmitter | Name of Voice Service | Power Reduction |
|---------------|-----------------|----------------|--------------------------|-----------------------|-----------------|
| GSM | GSM850 | VO | WLAN,BT | CMRS Voice | No |
| | GSM1900 | | | | No |
| WCDMA (UMTS) | Band II | VO | WLAN,BT | CMRS Voice | No |
| | Band IV | | | | No |
| | Band V | | | | No |
| FDD-LTE | Band 2 | VD | WLAN,BT | VoLTE | No |
| | Band 4 | | | | No |
| | Band 5 | | | | No |
| | Band 12 | | | | No |
| | Band 17 | | | | No |
| | Band 66 | | | | No |
| WiFi | 2450 | VD | GSM, UMTS, LTE | VoWiFi | No |
| | 5200 (U-NII-1) | | | | No |
| | 5300 (U-NII-2A) | | | | No |
| | 5500 (U-NII-2C) | | | | No |
| | 5800 (U-NII-3) | | | | No |
| BT | 2450 | DT | GSM, UMTS, LTE | N/A | No |

Note:

- 1) Air Interface/Band MHz: List of all air interfaces and bands supported by the handset.
- 2) Type: For each air interface, indicate the type of voice transport mode:
 - i. VO = legacy Cellular Voice Service, from ANSI C63.19-2019;
 - ii. DT = Digital Transport only (no voice); and
 - iii. VD = IP Voice Service over Digital Transport.
- 3) Simultaneous Transmitter: Indicate any air interface/bands that operate in simultaneous or concurrent service transmission mode.
- 4) Name of Voice Service: See Q4 in 285076 D03 HAC FAQ for further clarification.
- 5) Set device to highest device transmit power in a held to the ear mode.



4. T-Coil Test Requirements and Restrictions

4.1. T-Coil Coupling Qualifying Field Strengths

In order to comply with the requirements for T-Coil use, a WD's tested operating modes shall simultaneously meet the requirements for minimum desired ABM signal level and maximum undesired ABM field contained in this sub clause at the minimum specified number of scanned locations.

When measured as specified in this standard, there are two groups of qualifying measurement points:

Primary group: A qualifying measurement point shall have its T-Coil signal, desired ABM signal, ≥ -18 dB(A/m) at 1 kHz, in a 1/3 octave band filter. These measurements shall be made with the WD operating at a reference input level as specified in Table 6.1. Simultaneously, the qualifying measurement point shall have its weighted magnetic noise, undesired ABM field ≤ -38 dB (A/m).

Secondary group: A qualifying measurement point shall have its weighted magnetic noise, undesired ABM field ≤ -38 dB (A/m). This group inherently includes all the members of the primary group.

These levels are designed to be compatible with hearing aids that produce the same acoustic output level for either an acoustic input level of 65 dB SPL or a magnetic input level of -25 dB(A/m) (56.2 mA/m) at either 1.0 kHz or 1.6 kHz. The hearing aid operational measurements are performed per ANSI S3.22-2014.

4.2. Desired ABM signal and Undesired ABM Field Qualification Requirements

➤ 2G GSM Operating Modes

If the 2G GSM operating mode(s) are selected for qualification, the qualifying measurement points shall fulfill the requirements of section 6.6.2 of ANSI C63.19; both the primary and secondary group requirements shall be met:

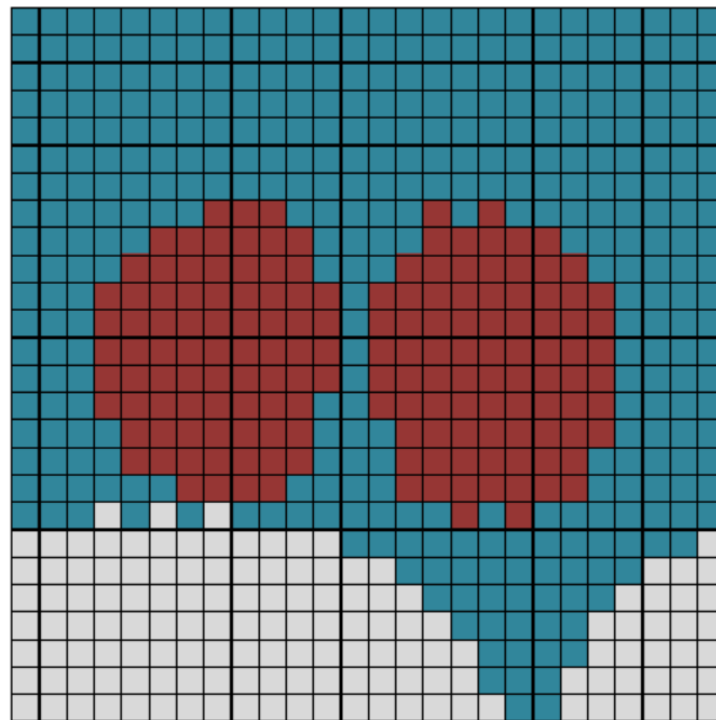
- The primary group shall include at least 25 measurement points.
- The secondary group shall include at least 125 contiguous measurement points.

➤ Non-2G GSM Operating Modes

The goal of this requirement is to ensure an adequate area where desired ABM signal is sufficiently strong to be heard clearly and a larger area where undesired ABM field is sufficiently low as to avoid undue annoyance. Qualifying measurement points shall fulfill the requirements of section 6.6.2 of ANSI C63.19; both the primary and secondary group requirements shall be met:

- The primary group shall include at least 75 measurement points.

- The secondary group shall include at least 300 contiguous measurement points.

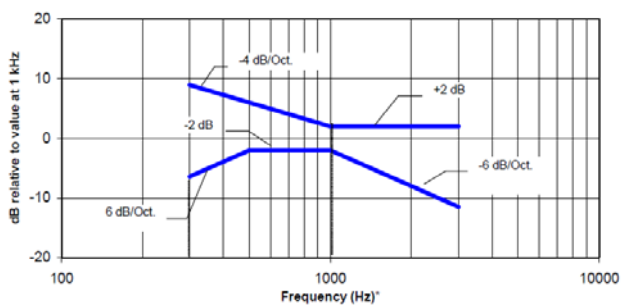


Red (primary group): AB desired ABM signal $M1 \geq -18$ dB(A/m) and undesired ABM field ≤ -38 dB(A/m)
 Blue and red (secondary group): undesired ABM field ≤ -38 dB(A/m)

Fig 4.1 An example of a qualifying desired ABM signal, undesired ABM field scan

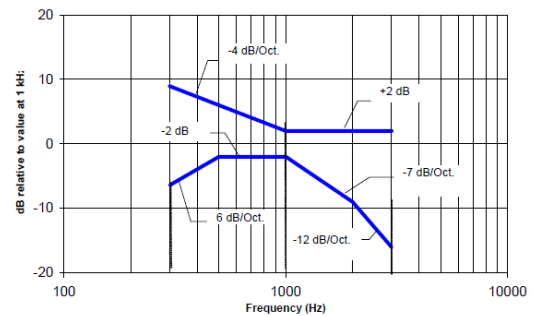
4.3. Frequency Response

The frequency response of the perpendicular component of the magnetic field, measured in 1/3 octave bands, shall follow the response curve specified in this sub-clause, over the frequency range 300 Hz to 3 kHz.



NOTE—The frequency response is between 300 Hz and 3000 Hz.

Fig 4.2 Magnetic field frequency response for WDs with field strength ≤ -15 dB (A/m) at 1 kHz



NOTE—The frequency response is between 300 Hz and 3000 Hz.

Fig 4.3 Magnetic field frequency response for WDs with a field that exceeds -15 dB (A/m) at 1 kHz

5. HAC (T-Coil) Measurement System

5.1. T-Coil Measurement Setup

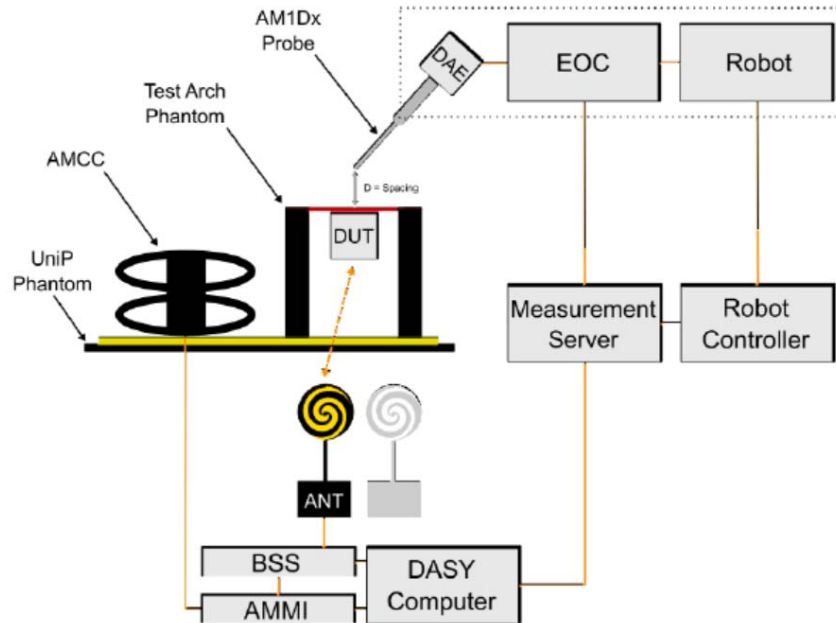


Fig 5.1 SPEAG T-Coil System Configurations

Note:

- Per C63.19 & KDB 285076 D02, define the all applicable input audio level:

| Standard | Protocol | Input Level (dBm0) |
|---------------------------|------------------------------|--------------------|
| TIA-2000 | CDMA | -18 |
| TIA/EIA-136 | TDMA (50 Hz) | -18 |
| J-STD-007 | GSM (217 Hz) | -16 |
| T1/T1P1/3GPP (See Note 1) | UMTS (WCDMA) | -16 |
| iDEN | TDMA (22 Hz and 11 Hz) | -18 |
| VoIP (See Note 2) | Voice over Internet Protocol | -16 |

Note 1: For UMTS (Universal Mobile Telecommunications System), refer to 3GPP TS26.131 and TS26.132.

Note 2: VoIP is used in this table as a general term specifying a group of voice services that use -16 dBm0 as their normal acoustic level. The group includes a variety of voice services, including Voice-over-LTE (VoLTE), Voice-over-IP-multimedia-subsystem (VoIMS), Voice-over-Wi-Fi (VoWiFi) and similar services. For 3G, LTE, and WLAN terminals used for Commercial Mobile Radio Service (CMRS) based telephony, refer to 3GPP TS26.131 and TS26.132.



2. A communication base station CMU200 is used for testing GSM / UMTS / CDMA, and it's "Decode Cal" and "Codec Cal" with audio option B52 and B85 to set the correct audio input level.
3. CMU200 is able to output 1 kHz audio signal equivalent to 3.14dBm0 at "Decode Cal", the signal reference is used to adjust the AMMI gain setting to reach -16dBm0 for GSM/UMTS and -18dBm0 for CDMA.
4. The callbox of CMW500 is used for VoLTE over IMS and VoWiFi over IMS T-Coil measurement, the data application unit of the CMW500 was used to simulate the IP multimedia subsystem server. And the CMW500 can be manually configured to ensure and control the speech input level result is -16dBm0 for VoLTE and -20dBm0 for VoWiFi when the device during the IMS connection.
5. The OTT VoIP call is tested on the data application unit of CMW500 connection to the internet.

5.2. Base Station Gain Factor

1. The Required gain factor for the specific signal shall typically be multiplied by this factor to achieve approx. the same level as for the 1 kHz sine signal.
2. The calculation formula as below showing how to determine the input level for air interface for this device.

The predefined signal types have the following differences / factors compared to the 1kHz sine signal:

| Signal [file name] | Duration [s] | Peak-to-RMS [dB] | RMS [dB] | Required gain factor (*) | Gain setting |
|-------------------------------|--------------|------------------|----------|--------------------------|--------------|
| 1kHz sine | --- | 3.0 | 0.0 | 1.00 | |
| 48k_1.025kHz_10s.wav | 10 | 3.0 | 0.0 | 1.00 | |
| 48k_1kHz_3.15kHz_10s.wav | 10 | 6.0 | -3.0 | 1.42 | |
| 48k_315Hz_1kHz_10s.wav | 10 | 6.0 | -2.9 | 1.40 | |
| 48k_csek_8k_441_white_10s.wav | 10 | 13.8 | -10.5 | 3.34 | |
| 48k_multisine_50-5000_10s.wav | 10 | 11.1 | -7.9 | 2.49 | |
| 48k_voice_1kHz_1s.wav | 1 | 16.2 | -12.7 | 4.33 | |
| 48k_voice_300-3000_2s.wav | 2 | 21.6 | -18.6 | 8.48 | |

(*) The gain for the specific signal shall typically be multiplied by this factor to achieve approx. the same level as for the 1kHz sine signal.

Insert the gain applicable for your setup in the last column of the table.

<Input level determination>

| Gain Value (linear) | Full Scaled Voltage (V) | dBm0 | dB | AMMI Audio Out | AMCC Coil Out |
|---------------------|-------------------------|------|-------|----------------|---------------|
| - | 1.5 | 3.14 | | 0.5 | 3.14 |
| 100 | | 5.6 | 40 | 2.96 | -15.38 |
| 9.31 | | -16 | 19.38 | | -16 |

<Base station gain factor calculation>

| Signal Type | Duration (s) | Peak to RMS (dB) | RMS (dB) | Gain Factor | Gain Setting |
|--------------------|--------------|------------------|----------|-------------|--------------|
| 1kHz sine | - | 3 | 0 | 1 | 8.17 |
| 48k_voice_1kHz | 1 | 16.4 | -12.8 | 4.35 | 40.32 |
| 48k_voice_300-3000 | 2 | 21.8 | -18.7 | 8.51 | 78.96 |

5.3. T-Coil Measurement Reference Plane

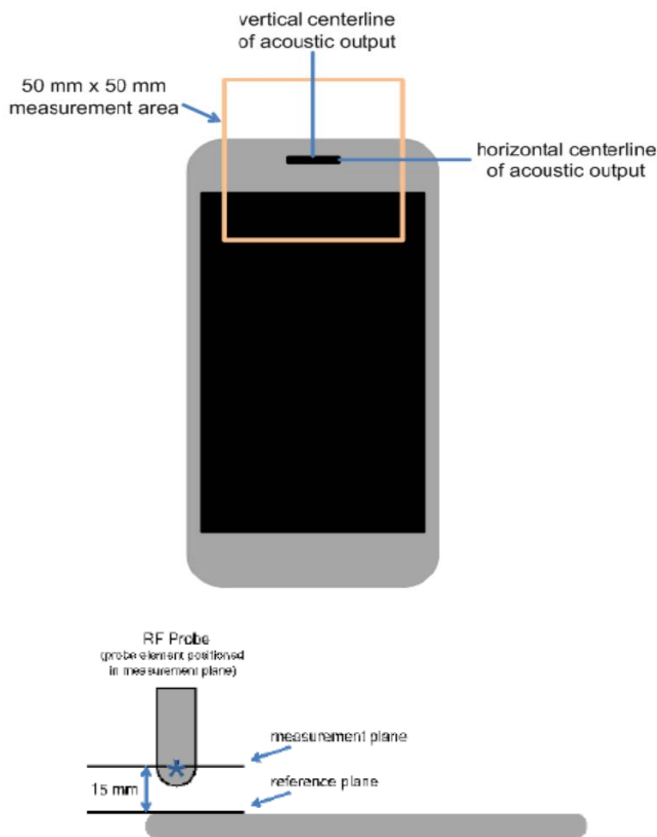


Fig 5.2 WD measurement and reference planes for RF emission measurements

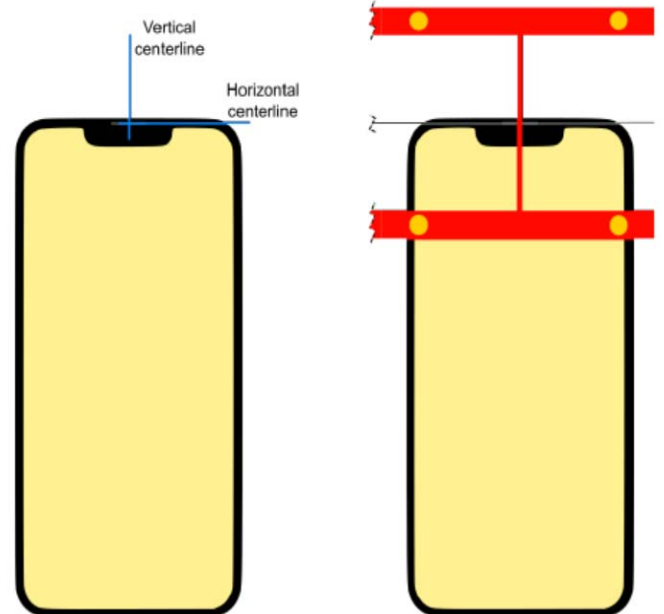


Fig 5.3 Device Under Test Positioning under the Test Arch

Note:

1. The reference plane is the planar area that contains the highest point in the area of the phone that normally rests against the user's ear. It is parallel to the centerline of the receiver area of the phone and is defined by the points of the receiver-end of the WD handset, which, in normal handset use, rest against the ear.
2. The measurement plane is parallel to, and 10 mm in front of, the reference plane.



3. The reference axis is normal to the reference plane and passes through the center of the acoustic output (or the center of the hole array); or may be centered on or near a secondary inductive source. The actual location of the reference axis and resultant measurement area shall be noted in the test report.
4. The measurement area shall be 50 mm by 50 mm. The measurement area for both desired ABM signal and undesired ABM field may be located where the transverse magnetic measurements are optimum with regard to the requirements. However, the measurement area should be in the vicinity of the acoustic output of the WD and shall be located in the same half of the phone as the WD receiver. In a WD handset with a centered receiver and a circularly symmetrical magnetic field, the measurement axis and the reference axis would coincide.
5. Measurements of desired ABM signal strength and undesired ABM field are made at 2.0 mm \pm 0.5 mm or 4 mm intervals in an X-Y measurement area pattern over the entire measurement area (676 measurement points total); either all measured, or measured plus interpolated, per 6.4 of ANSI C63.19.
6. Desired ABM signal frequency response is measured at a single location at or near the maximum desired ABM signal strength location.
7. The actual locations of the measurement points shall be noted in the test report.

5.4. System Validation

For correct and calibrated measurement of the voltages and ABM filed, DASYS will perform a calibration job follows below:

1. In phase 1, the audio output is switched off, and a 200 mW symmetric rectangular signal of 1 kHz is connected directly to both channels of the sampling unit (Coil in, Probe in).
2. In phase 2, the audio output is off, and a 20 mW symmetric 100 Hz signal is internally connected. The signals during phases 1 and 2 are available at the output on the rear panel of the AMMI. However, the output must not be loaded, in order to avoid influencing the calibration, an RMS voltmeter would indicate 100mWRMS, during the second phase after the first two phases, the two input channels are both calibrated for absolute ants of voltages. The resulting factors are displayed above the multi-meter window.
3. After phases 1 and 2, the input channels are calibrated to measure exact voltages. This is required to use the inputs for measuring voltages with their peak and RMS value.
4. In phase 3, a mult-sine signal covering each third-octave band from 50 Hz to 10 kHz is generated and applied to both audio outputs. The probe should be positioned in the center of the AMCC and aligned in the z-direction, the filed orientation of the AMCC. The "Coil In" channel is measuring the voltage over the AMCC internal shunt, which is proportional to the magnetic filed in the AMCC. At the same time, the "Probe In" channel samples the amplified signal picked up by the probe coil and provides a numerical integrator. The ratio of two voltages in each third-octave filter leads to the spectral representation over the frequency band of interest. The coil signal is scaled in dBV, and the probe signal is first integrated and normalized to show dB A/m. The ratio probe-to-coil at the frequency of 1 kHz is the sensitivity which will be used in the consecutive T-coil jobs.



6. T-Coil Test Procedure

6.1. General Description

T-Coil measurement follows Section 6.4 of ANSI C63.19-2019.

This sub clause describes the procedures used to measure the ABM (T-Coil) performance of the WD. Measurements shall be performed over a measurement area 50 mm square, in the measurement plane, as specified in A.3. The measurement area shall be scanned with a uniform measurement point spacing of 2.0 mm \pm 0.5 mm in each X-Y axis of the plane, yielding 676 measurement points with approximately even spacing throughout the area.

Optionally, measurement point spacing may be increased to 4 mm, with interpolation employed to yield the required 676 equivalent measurement points distributed uniformly over the 50 mm square measurement area. Interpolated points shall be derived from the average of the linear representations of the field strengths of the nearest two or four equidistant measured points. The area of measurement is increased to a 52 mm square so that edge rows and columns of the required 50 mm square can be either measured or interpolated, with none extrapolated.

In addition to measuring the desired ABM signal levels, the weighted magnitude of the unintended signal shall also be determined. Weighting of the unintended and undesired ABM field shall be by the spectral and temporal weighting described in D.4 through D.6.

In order to assure that the required signal quality is measured, the measurement of the intended signal and the measurement of the unintended signal shall be made at the same locations. Measurements shall not include undesired influence from the WD's RF field; therefore, use of a coaxial connection to a base station simulator or non-radiating load might be necessary. However, even then with a coaxial connection to a base station simulator or non-radiating load there could still be RF leakage from the WD, which could interfere with the desired measurement. Pre-measurement checks should be made to avoid this possibility. All measurements shall be done with the WD operating on battery power with an appropriate normal speech audio signal input level given in Table 6.1. If the device display can be turned off during a phone call, then that may be done during the measurement as well. If tested with the display in the off state this shall be documented in the test report.

Measurements shall be performed with the probe coil oriented in the transverse direction, as illustrated in A.3, that is, aligned in the plane of the measurement area and perpendicular to the long dimension of the WD. A multi-stage sequence consists of first measuring the field strength of the desired T-Coil signal (desired ABM signal) that is useful to a hearing aid T-Coil at each specified measurement point. The undesired magnetic component (undesired ABM field) is then measured in the same transverse orientation at each of



the same measurement points. At a single location only, taken at or near the highest desired ABM signal reading, the desired ABM signal frequency response shall be determined in a third measurement stage. The flowchart in Figure 6.3 illustrates this three-stage process.

To minimize the need to test every WD operating mode to the telecoil requirements of Clause 6, it is permissible to exclude some subset of supported configurations. For a given WD, every mode that supports voice communication shall be considered for telecoil testing. However, if it can be demonstrated that a certain configuration will not be the worst-case telecoil configuration, such configurations may be excluded from the full telecoil scans of 6.4.34. For example, operating modes may be pre-screened by scanning for both desired ABM signal and undesired ABM field at a lower measurement point density than the final scans, thus saving considerable testing time by eliminating configurations that are excellent performers from more detailed testing for worst-case. In any case, the specific methods and criteria used to determine which configurations are excluded for a WD shall be explicitly stated and justified in the test report. To be considered for exclusion from telecoil testing, operating modes shall also be shown to pass the frequency response requirements of 6.6.3.

Many factors could affect telecoil test results. RF power level and amplitude modulation characteristics as well as the specific current paths within the WD associated with the RF output stage(s), the display, and processing circuitry could affect the undesired ABM field. Audio codec implementation and acoustic receiver characteristics could also affect the desired ABM signal). Therefore, any justifications for exclusions should be thorough documented. If an operating mode is under user control and instructions on how to place the WD in a less interfering condition is in the user instructions, those instructions may be followed in configuring the device for testing.

6.2. T-Coil Test Flow

This section follows ANSI C63.19-2019 section 6.4.1:

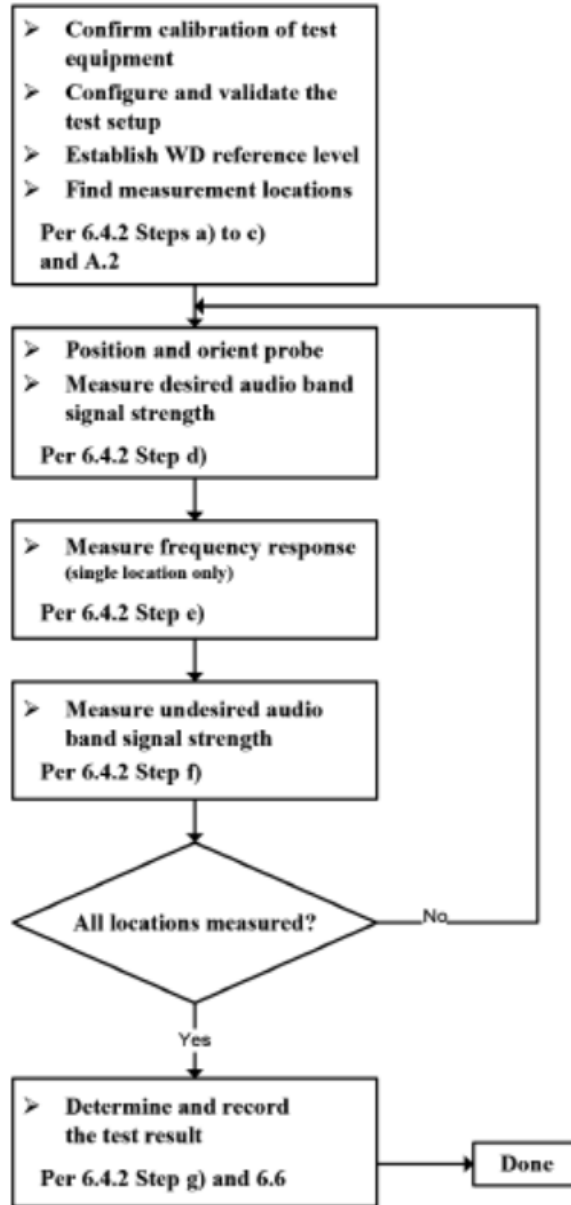


Fig 6.1 WD T-Coil signal test flowchart

Note:

The following steps summarize the basic test flow for determining desired ABM signal and undesired ABM field. These steps assume that a sine wave or narrowband 1/3 octave signal can be used for the measurement of desired ABM signal level. An alternative procedure, yielding equivalent results, using a broadband excitation is described in 6.5 of ANSI C63.19-2019.

1. A validation of the test setup and instrumentation shall be performed. This may be done using a TMFS



or Helmholtz Coil. Measure the emissions and confirm that they are within tolerance of the expected values.

2. Confirm that equipment that requires calibration has been calibrated, and that the noise level meets the requirements given in 6.3.2.
3. Position the WD in the test setup and connect the WD RF connector to a base station simulator or a non-radiating load (if necessary to control RF interference in the measurement equipment) as shown in Figure 6.1 or Figure 6.2.
4. The drive level to the WD is set such that the reference input level specified in Table 6.1 is input to the base station simulator (or manufacturer's test mode equivalent) in the 1 kHz, 1/3 octave band. This drive level shall be used for the T-Coil signal test (desired ABM signal) at $f = 1$ kHz. Either a sine wave at 1025 Hz, or a voice-like signal, band-limited to the 1 kHz 1/3 octave, as specified in 6.4.3, shall be used for the reference audio signal. If interference is found at 1025 Hz an alternative nearby reference audio signal frequency may be used.³⁵ The same drive level will be used for the desired ABM signal frequency response measurements at each 1/3 octave band center frequency. The WD volume control may be set at any level up to maximum, provided that a signal at any frequency at maximum modulation would not result in clipping or signal overload.
5. At each measurement location over the measurement area and in the transverse orientation, measure and record the desired 1 kHz T-Coil magnetic signal (desired ABM signal) as described in Step c).
6. At or near a location representing a maximum in the just-measured desired ABM signal, measure and record the desired T-Coil magnetic signals (desired ABM signal at f_i) as described in 6.4.5.2 in each individual ISO 266:1975 R10 standard 1/3 octave band. The desired audio band input frequency (f_i) shall be centered in each 1/3 octave band maintaining the same drive level as determined in Step c), and the reading taken for that band. Equivalent methods of determining the frequency response may also be employed, such as fast Fourier transform (FFT) analysis using noise excitation or input-output comparison using simulated speech. The full-band integrated or half-band integrated probe output, as described in D.9, may be used, as long as the appropriate calibration curve is applied to the measured result, so as to yield an accurate measurement of the field magnitude. (The resulting measurement shall be an accurate measurement in dB (A/m).) Compare the frequency response found to the requirements of 6.6.3.
7. At the same locations measured in Step d), measure and record the undesired broadband audio magnetic signal (undesired ABM field) with no audio signal applied (or digital zero applied, if appropriate) using the specified spectral weighting, the half-band integrator followed by the temporal weighting.
8. Calculate and record the location and number of the measurement points that satisfy both the minimum desired ABM signal level and the maximum undesired ABM field level specified in 6.6.2. Compare this to the requirements in 6.6.4 and record the result.
9. Calculate and record the location and number of the measurement points that satisfy the maximum undesired ABM field level and distribution requirements specified in 6.6.4.



7. Test Equipment List

| Manufacturer | Name of Equipment | Type/Model | Serial No. / SW Version | Calibration | |
|--------------|---------------------------------------|------------|-------------------------|-------------|------------|
| | | | | Last Cal. | Due Date |
| SPEAG | DOSIMETRIC ASSESSMENT SYSTEM Software | cDASY6 HAC | V1.2 | NCR | NCR |
| SPEAG | Audio Magnetic 1D Field Probe | AM1DV3 | 1048 | 2023.06.13 | 2024.06.12 |
| SPEAG | Audio Magnetic Calibration Coil | AMCC | 1044 | NCR | NCR |
| SPEAG | Audio Measuring Instrument | AMMI | 1032 | NCR | NCR |
| SPEAG | Test Arch Phantom | N/A | N/A | NCR | NCR |
| SPEAG | Audio Holder | N/A | 1094 | NCR | NCR |
| SPEAG | Data Acquisition Electronics | DAE4 | 480 | 2023.09.19 | 2024.09.18 |
| R&S | Base Station | CMU200 | 107082 | 2023.06.21 | 2024.06.20 |
| R&S | Base Station | CMW500 | 165755 | 2024.01.25 | 2025.01.24 |



8. Summary Test Results

8.1. Test Guidance

1. The middle channel of each frequency band is used for T-Coil testing according to ANSI C63.19-2019.
2. For VoLTE radio configuration investigation, choose either one codec and an investigation was performed on all frequency bands, data rates and modulations and RB configuration to determine the radio configuration to be used for testing, the following test results which the worst case configuration would be remarked to be used for the testing for the handset.
3. According to KDB 285076, reporting results involves Air Interface Investigation defined following process:
 - 1) Ratio configuration Investigation: The worst radio configuration (e.g. bandwidth, modulation data rate, subcarrier spacings, and resource blocks) should be investigated and documented.
 - 2) Codec Investigation to determine the worst-case codec for each voice service, using the worst-case codec for a voice service, a range of channels and bands tested.
 - 3) Using a frequency near the center of the frequency band to test T-Coil per ANSI C63.19-2019 section 6.3.3.
4. For 5G VoWiFi, the worst frequency band of 802.11a would be selected to test other wireless modes.
5. This device was tested under the maximum volume, backlight off and mute on.
6. HAC mode would be active to improve the audio signal to comply with the T-Coil performance of ANSI C63.19-2019.
7. The device has similar frequency in LTE bands: LTE Band 12/17, LTE Band 4/66 since the supported frequency spans for the smaller LTE bands are completely covered by the larger LTE bands, therefore, only larger LTE bands were required to be tested for hearing-aid compliance.



8.2. Test Results

➤ GSM Test Results

<Codec Investigation>

| Wireless Band & Channel | Orientation | Codec Bites (Kbps) | Primary Group Contiguous Point Count | Secondary Group Contiguous Point Count | Secondary Group Max Longitudinal | Secondary Group Max Transverse | Frequency Response |
|-------------------------|-----------------|--------------------|--------------------------------------|--|----------------------------------|--------------------------------|--------------------|
| GSM850 /189 | Transversal (Y) | AMR-NB 4.75 | 222 | 404 | 26 | 26 | PASS |
| | | AMR-NB 12.2 | 220 | 396 | 26 | 26 | PASS |
| | | AMR-WB 6.60 | 222 | 408 | 26 | 26 | PASS |
| | | AMR-WB 23.85 | 232 | 414 | 26 | 26 | PASS |

Note: The worst codec of AMR-NB 12.2Kbps was selected for air interface Investigation.

<Air Interface Investigation>

| Air Interface | Mode | Channel | Primary Group Contiguous Point Count | Secondary Group Contiguous Point Count | Secondary Group Max Longitudinal | Secondary Group Max Transverse | Ambient Noise dB (A/m) | Frequency Response |
|---------------|-----------|---------|--------------------------------------|--|----------------------------------|--------------------------------|------------------------|--------------------|
| GSM 850 | GSM Voice | 189 | 220 | 396 | 26 | 26 | -53.87 | PASS |
| GSM 1900 | GSM Voice | 661 | 221 | 396 | 25 | 26 | -53.87 | PASS |

➤ UMTS Test Results

<Codec Investigation>

| Wireless Band & Channel | Orientation | Codec Bites (Kbps) | Primary Group Contiguous Point Count | Secondary Group Contiguous Point Count | Secondary Group Max Longitudinal | Secondary Group Max Transverse | Frequency Response |
|-------------------------|-----------------|---------------------|--------------------------------------|--|----------------------------------|--------------------------------|--------------------|
| WCDMA II / 9400 | Transversal (Y) | AMR-NB 4.75 | 387 | 630 | 26 | 26 | PASS |
| | | AMR-NB 12.20 | 368 | 622 | 26 | 26 | PASS |
| | | AMR-WB 6.60 | 386 | 633 | 26 | 26 | PASS |
| | | AMR-WB 23.85 | 379 | 630 | 26 | 26 | PASS |

Note: The worst codec of AMR-NB 12.2Kbps was selected for air interface Investigation.



<Air Interface Investigation>

| Air Interface | Mode | Channel | Primary Group Contiguous Point Count | Secondary Group Contiguous Point Count | Secondary Group Max Longitudinal | Secondary Group Max Transverse | Ambient Noise dB (A/m) | Frequency Response |
|---------------|------|---------|--------------------------------------|--|----------------------------------|--------------------------------|------------------------|--------------------|
| WCDMA II | AMR | 9400 | 368 | 622 | 26 | 26 | -53.87 | PASS |
| WCDMA IV | AMR | 1413 | 363 | 617 | 26 | 26 | -53.87 | PASS |
| WCDMA V | AMR | 4182 | 336 | 593 | 26 | 26 | -53.87 | PASS |

➤ VoLTE Test Results

<Codec Investigation>

| Wireless Band / Bandwidth / Channel | Orientation | Codec Bites (Kbps) | Primary Group Contiguous Point Count | Secondary Group Contiguous Point Count | Secondary Group Max Longitudinal | Secondary Group Max Transverse | Frequency Response |
|-------------------------------------|-----------------|---------------------|--------------------------------------|--|----------------------------------|--------------------------------|--------------------|
| LTE Band 2/ 20MHz/ 18900 | Transversal (Y) | AMR-NB 4.75 | 310 | 526 | 26 | 26 | PASS |
| | | AMR-NB 12.20 | 300 | 517 | 26 | 26 | PASS |
| | | AMR-WB 6.60 | 303 | 520 | 26 | 26 | PASS |
| | | AMR-WB 23.85 | 326 | 533 | 26 | 26 | PASS |
| | | EVS-WB 5.9 | 308 | 524 | 26 | 26 | PASS |
| | | EVS-WB 24.4 | 318 | 525 | 26 | 26 | PASS |
| | | EVS-NB 5.9 | 322 | 531 | 26 | 26 | PASS |
| | | EVS-NB 24.4 | 309 | 519 | 26 | 26 | PASS |

Note: The worst codec of AMR-NB 12.2Kbps was selected for air interface Investigation.



<Radio Configuration Investigation>

| Air Interface | Bandwidth (MHz) | Modulation | RB Offset | Probe Position | Primary Group Contiguous Point Count | Frequency Response |
|---------------|-----------------|-------------|------------|-----------------|--------------------------------------|--------------------|
| LTE Band 2 | 20 | QPSK | 1#0 | Transversal (Y) | 300 | PASS |
| LTE Band 2 | 20 | QPSK | 100#0 | Transversal (Y) | 314 | PASS |
| LTE Band 2 | 20 | 16QAM | 1#0 | Transversal (Y) | 315 | PASS |
| LTE Band 2 | 20 | 64QAM | 1#0 | Transversal (Y) | 314 | PASS |
| LTE Band 2 | 15 | QPSK | 1#0 | Transversal (Y) | 315 | PASS |
| LTE Band 2 | 10 | QPSK | 1#0 | Transversal (Y) | 311 | PASS |
| LTE Band 2 | 5 | QPSK | 1#0 | Transversal (Y) | 312 | PASS |
| LTE Band 2 | 1.4 | QPSK | 1#0 | Transversal (Y) | 309 | PASS |

Note: The worst radio configuration highlight about would be selected for other air interface measurement.

<Air Interface Investigation>

| Air Interface | Mode | Channel | Primary Group Contiguous Point Count | Secondary Group Contiguous Point Count | Secondary Group Max Longitudinal | Secondary Group Max Transverse | Ambient Noise dB (A/m) | Frequency Response |
|----------------|----------|---------|--------------------------------------|--|----------------------------------|--------------------------------|------------------------|--------------------|
| LTE Band 2 | QPSK/1#0 | 18900 | 300 | 517 | 26 | 26 | -53.87 | PASS |
| LTE Band 5 | QPSK/1#0 | 20525 | 289 | 502 | 26 | 26 | -53.87 | PASS |
| LTE Band 12/17 | QPSK/1#0 | 23095 | 285 | 490 | 26 | 26 | -53.87 | PASS |
| LTE Band 66/4 | QPSK/1#0 | 132322 | 294 | 509 | 26 | 26 | -53.87 | PASS |



➤ VoWiFi Test Results

<Codec Investigation>

| Wireless Band / Channel | Orientation | Codec Bites (Kbps) | Primary Group Contiguous Point Count | Secondary Group Contiguous Point Count | Secondary Group Max Longitudinal | Secondary Group Max Transverse | Frequency Response |
|-------------------------|-----------------|---------------------|--------------------------------------|--|----------------------------------|--------------------------------|--------------------|
| WLAN 2.4GHz 6 | Transversal (Y) | AMR-NB 4.75 | 298 | 443 | 23 | 26 | PASS |
| | | AMR-NB 12.20 | 290 | 423 | 22 | 26 | PASS |
| | | AMR-WB 6.60 | 300 | 426 | 23 | 26 | PASS |
| | | AMR-WB 23.85 | 301 | 445 | 23 | 26 | PASS |
| | | EVS-SWB 9.6 | 295 | 450 | 22 | 26 | PASS |
| | | EVS-SWB 24.4 | 296 | 427 | 23 | 26 | PASS |
| | | EVS-WB 5.9 | 301 | 433 | 22 | 26 | PASS |
| | | EVS-WB 24.4 | 298 | 445 | 22 | 26 | PASS |
| | | EVS-NB 5.9 | 304 | 438 | 22 | 26 | PASS |
| | | EVS-NB 24.4 | 298 | 450 | 22 | 26 | PASS |
| | | EVS-FWB 24.4 | 307 | 432 | 22 | 26 | PASS |
| EVS-FWB 32 | 304 | 429 | 23 | 26 | PASS | | |

Note: The worst codec of AMR-NB 12.2Kbps was selected for air interface Investigation.

<Radio Configuration Investigation>

| Wireless Band | Air Interface | Data Rate | Channel | Probe Position | Primary Group Contiguous Point Count | Frequency Response |
|---------------|----------------|--------------|---------|-----------------|--------------------------------------|--------------------|
| WLAN 2.4GHz | 802.11b | 1Mbps | 6 | Transversal (Y) | 290 | PASS |
| | 802.11g | 6Mbps | 6 | Transversal (Y) | 271 | PASS |
| | 802.11n-HT20 | MCS0 | 6 | Transversal (Y) | 353 | PASS |
| | 802.11n-HT40 | MCS0 | 6 | Transversal (Y) | 340 | PASS |
| WLAN 5.2GHz | 802.11a | 6Mbps | 44 | Transversal (Y) | 437 | PASS |
| WLAN 5.3GHz | 802.11a | 6Mbps | 60 | Transversal (Y) | 415 | PASS |
| WLAN 5.5GHz | 802.11a | 6Mbps | 120 | Transversal (Y) | 423 | PASS |
| WLAN 5.8GHz | 802.11a | 6Mbps | 157 | Transversal (Y) | 404 | PASS |

Note: The worst radio configuration highlight about would be selected for other air interface measurement.



<Air Interface Investigation>

| Wireless Band | Air Interface | Channel | Primary Group Contiguous Point Count | Secondary Group Contiguous Point Count | Secondary Group Max Longitudinal | Secondary Group Max Transverse | Ambient Noise dB (A/m) | Frequency Response |
|---------------|---------------|---------|--------------------------------------|--|----------------------------------|--------------------------------|------------------------|--------------------|
| WLAN 2.4GHz | 802.11b | 6 | 290 | 423 | 22 | 26 | -53.87 | PASS |
| | 802.11g | 6 | 271 | 406 | 19 | 26 | -53.87 | PASS |
| | 802.11n20 | 6 | 353 | 494 | 24 | 26 | -53.87 | PASS |
| | 802.11n40 | 6 | 340 | 481 | 22 | 26 | -53.87 | PASS |
| WLAN 5.2GHz | 802.11a | 44 | 437 | 560 | 26 | 26 | -53.87 | PASS |
| WLAN 5.3GHz | 802.11a | 60 | 415 | 539 | 26 | 26 | -53.87 | PASS |
| WLAN 5.5GHz | 802.11a | 120 | 423 | 547 | 25 | 26 | -53.87 | PASS |
| WLAN 5.8GHz | 802.11a | 157 | 404 | 531 | 26 | 26 | -53.87 | PASS |
| | 802.11n-20 | 157 | 419 | 544 | 24 | 26 | -53.87 | PASS |
| | 802.11n40 | 159 | 430 | 553 | 24 | 26 | -53.87 | PASS |
| | 802.11ac20 | 157 | 424 | 551 | 24 | 26 | -53.87 | PASS |
| | 802.11ac40 | 159 | 424 | 545 | 26 | 26 | -53.87 | PASS |
| | 802.11ac80 | 155 | 416 | 540 | 26 | 26 | -53.87 | PASS |



9. Uncertainty Assessment

| Uncertainty of Audio Band Magnetic Measurements | | | | | | | |
|---|------------------------|----------------|-------|-----------|-----------|----------------------------------|----------------------------------|
| Error Description | Uncertainty Value (±%) | Probe Distance | Div. | (Ci) ABMd | (Ci) ABMu | Standard Uncertainty (ABMd) (±%) | Standard Uncertainty (ABMu) (±%) |
| Probe Sensitivity | | | | | | | |
| Reference level | 3.0 | N | 1 | 1 | 1 | 3.0 | 3.0 |
| AMCC geometry | 0.4 | R | 1.732 | 1 | 1 | 0.2 | 0.2 |
| AMCC current | 1.0 | R | 1.732 | 0.7 | 0.7 | 0.6 | 0.6 |
| Probe positioning during calibrate | 0.1 | R | 1.732 | 1 | 1 | 0.1 | 0.1 |
| Noise contribution | 0.7 | R | 1.732 | 0.0143 | 1 | 0.0 | 0.4 |
| Frequency slope | 5.9 | R | 1.732 | 0.1 | 1 | 0.3 | 3.5 |
| Probe System | | | | | | | |
| Repeatability/drift | 1.0 | R | 1.732 | 1 | 1 | 0.6 | 0.6 |
| Linearity/dynamic range | 0.6 | R | 1.732 | 1 | 1 | 0.4 | 0.4 |
| Acoustic noise | 1.0 | R | 1.732 | 0.1 | 1 | 0.1 | 0.6 |
| Probe angle | 1.0 | R | 1.732 | 1 | 1 | 0.6 | 0.6 |
| Spectral processing | 0.9 | R | 1.732 | 1 | 1 | 0.5 | 0.5 |
| Integration time | 0.6 | N | 1 | 1 | 5 | 0.6 | 3.0 |
| Field disturbance | 0.2 | R | 1.732 | 1 | 1 | 0.1 | 0.1 |
| Test Signal | | | | | | | |
| Reference signal spectral response | 0.6 | R | 1.732 | 0 | 1 | 0.0 | 0.4 |
| Positioning | | | | | | | |
| Probe positioning | 1.9 | R | 1.732 | 1 | 1 | 1.1 | 1.1 |
| Phantom thickness | 0.9 | R | 1.732 | 1 | 1 | 0.5 | 0.5 |
| EUT positioning | 1.9 | N | 1.732 | 1 | 1 | 1.1 | 1.1 |
| External contributions | | | | | | | |
| RF interference | 0.0 | R | 1.732 | 1 | 0.3 | 0.0 | 0.0 |
| Test signal variation | 2.0 | R | 1.732 | 1 | 1 | 1.2 | 1.2 |
| Combined Std. Uncertainty | | | | | | | |
| Combined Std. Uncertainty (ABM Field) | | | | | | 3.9 | 6.0 |
| Expanded STD Uncertainty | | | | | | | |
| | | | | | | 7.8 | 11.0 |



Annex A General Information

1. Identification of the Responsible Testing Laboratory

| | |
|---------------------|--|
| Laboratory Name: | Shenzhen Morlab Communications Technology Co., Ltd. |
| Laboratory Address: | FL.1-3, Building A, FeiYang Science Park, No.8 LongChang Road, Block 67, BaoAn District, ShenZhen, GuangDong Province, P. R. China |
| Telephone: | +86 755 36698555 |
| Facsimile: | +86 755 36698525 |

2. Identification of the Responsible Testing Location

| | |
|----------|--|
| Name: | Shenzhen Morlab Communications Technology Co., Ltd. |
| Address: | FL.1-3, Building A, FeiYang Science Park, No.8 LongChang Road, Block 67, BaoAn District, ShenZhen, GuangDong Province, P. R. China |

3. Facilities and Accreditations

The FCC designation number is CN1192, the test firm registration number is 226174.



Annex B Test Setup Photos

The annex B will be submitted separately.

Annex C Plots of T-Coil Test Results

The annex C will be submitted separately.

Annex D DASY Calibration Certificate

The annex D will be submitted separately.

***** END OF MAIN REPORT *****