



REPORT No.: SZ22070207S01

## Annex D Plots of Maximum SAR Test Results

## GSM850\_GPRS(4 TX slots)\_Right Cheek\_Ch189

Communication System: UID 0, GSM850(class 12) (0); Frequency: 836.4 MHz; Duty Cycle: 1:2.08  
Medium: HSL\_900 Medium parameters used:  $f = 836.4$  MHz;  $\sigma = 0.958$  S/m;  $\epsilon_r = 40.843$ ;  $\rho = 1000$  kg/m<sup>3</sup>

Ambient Temperature : 23.2 °C; Liquid Temperature : 22.1 °C

### DASY5 Configuration:

- Probe: EX3DV4 - SN7608; ConvF(9.81, 9.81, 9.81) @ 836.4 MHz; Calibrated: 2022.01.12
- Sensor-Surface: 2mm (Mechanical Surface Detection)
- Electronics: DAE4 Sn1643; Calibrated: 2021.12.30
- Phantom: Twin-SAM; Type: QD 000 P41 Ax; Serial: 2020
- Measurement SW: DASY52, Version 52.10 (4); SEMCAD X Version 14.6.14 (7483)

**Ch189/Area Scan (71x91x1):** Interpolated grid: dx=1.500 mm, dy=1.500 mm

Maximum value of SAR (interpolated) = 0.208 W/kg

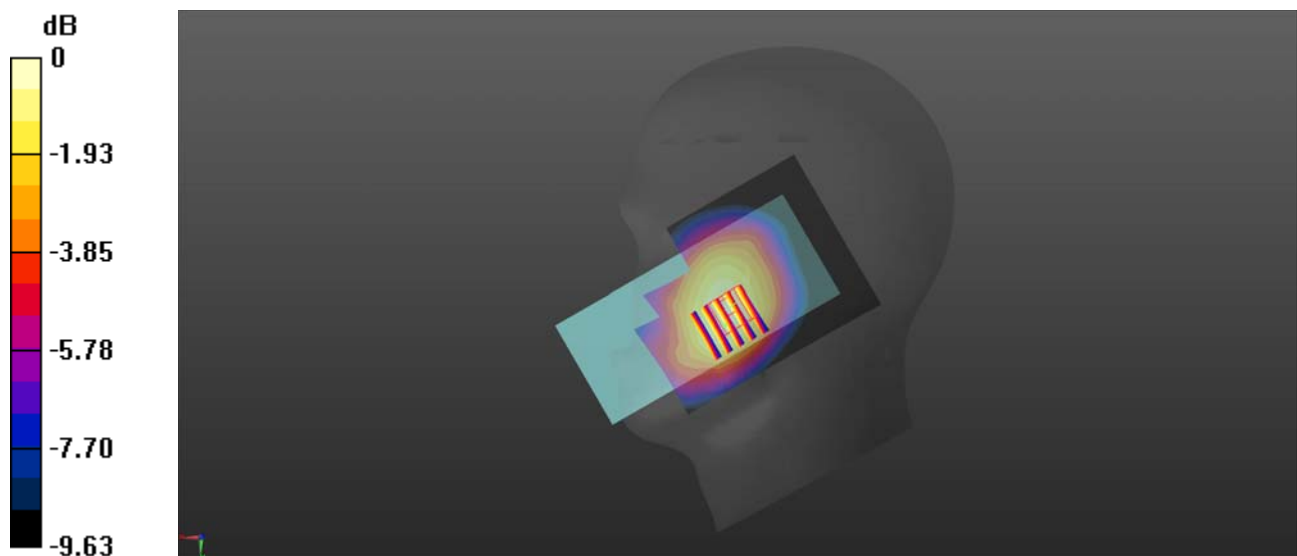
**Ch189/Zoom Scan (5x5x7)/Cube 0:** Measurement grid: dx=8mm, dy=8mm, dz=5mm

Reference Value = 3.831 V/m; Power Drift = 0.01 dB

Peak SAR (extrapolated) = 0.259 W/kg

**SAR(1 g) = 0.199 W/kg; SAR(10 g) = 0.151 W/kg**

Maximum value of SAR (measured) = 0.229 W/kg



0 dB = 0.229 W/kg

## GSM1900\_GPRS(4 TX slots)\_Right Cheek\_Ch661

Communication System: UID 0, GSM1900(class 12) (0); Frequency: 1880 MHz; Duty Cycle: 1:2.08  
Medium: HSL\_2000 Medium parameters used:  $f = 1880$  MHz;  $\sigma = 1.321$  S/m;  $\epsilon_r = 39.882$ ;  $\rho = 1000$  kg/m<sup>3</sup>

Ambient Temperature : 23.2 °C; Liquid Temperature : 22.2 °C

### DASY5 Configuration:

- Probe: EX3DV4 - SN7608; ConvF(7.99, 7.99, 7.99) @ 1880 MHz; Calibrated: 2022.01.12
- Sensor-Surface: 2mm (Mechanical Surface Detection)
- Electronics: DAE4 Sn1643; Calibrated: 2021.12.30
- Phantom: Twin-SAM; Type: QD 000 P41 Ax; Serial: 2020
- Measurement SW: DASY52, Version 52.10 (4); SEMCAD X Version 14.6.14 (7483)

**Ch661/Area Scan (71x91x1):** Interpolated grid: dx=1.500 mm, dy=1.500 mm

Maximum value of SAR (interpolated) = 0.0596 W/kg

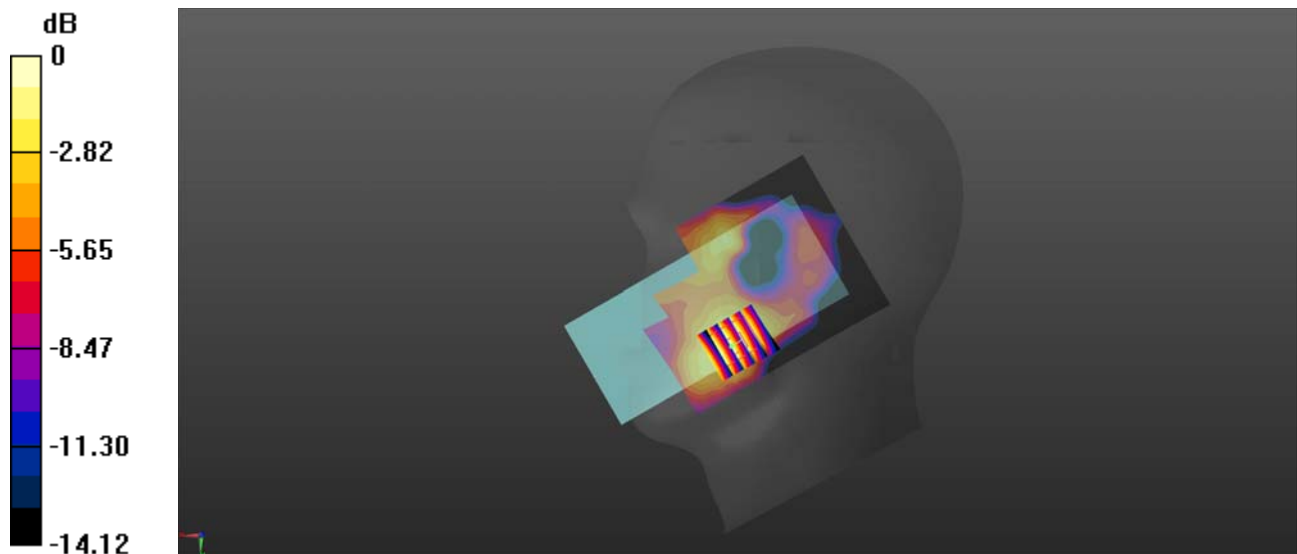
**Ch661/Zoom Scan (5x5x7)/Cube 0:** Measurement grid: dx=8mm, dy=8mm, dz=5mm

Reference Value = 2.157 V/m; Power Drift = 0.09 dB

Peak SAR (extrapolated) = 0.0730 W/kg

**SAR(1 g) = 0.046 W/kg; SAR(10 g) = 0.028 W/kg**

Maximum value of SAR (measured) = 0.0598 W/kg



0 dB = 0.0598 W/kg

## WCDMA Band II\_RMC 12.2Kbps\_Right Cheek\_Ch9400

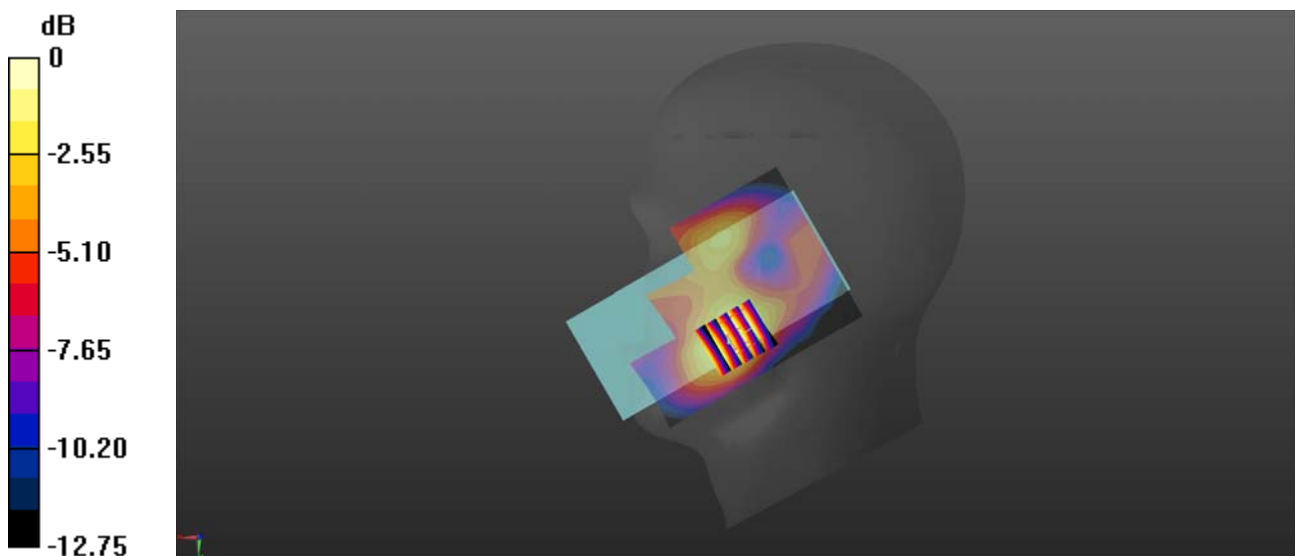
Communication System: UID 0, UMTS-FDD (0); Frequency: 1880 MHz; Duty Cycle: 1:1  
Medium: HSL\_2000 Medium parameters used:  $f = 1880$  MHz;  $\sigma = 1.321$  S/m;  $\epsilon_r = 39.882$ ;  $\rho = 1000$  kg/m<sup>3</sup>  
Ambient Temperature : 23.2 °C; Liquid Temperature : 22.2 °C

### DASY5 Configuration:

- Probe: EX3DV4 - SN7608; ConvF(7.99, 7.99, 7.99) @ 1880 MHz; Calibrated: 2022.01.12
- Sensor-Surface: 2mm (Mechanical Surface Detection)
- Electronics: DAE4 Sn1643; Calibrated: 2021.12.30
- Phantom: Twin-SAM; Type: QD 000 P41 Ax; Serial: 2020
- Measurement SW: DASY52, Version 52.10 (4); SEMCAD X Version 14.6.14 (7483)

**Ch9400/Area Scan (71x91x1):** Interpolated grid: dx=1.500 mm, dy=1.500 mm  
Maximum value of SAR (interpolated) = 0.184 W/kg

**Ch9400/Zoom Scan (5x5x7)/Cube 0:** Measurement grid: dx=8mm, dy=8mm, dz=5mm  
Reference Value = 5.223 V/m; Power Drift = 0.07 dB  
Peak SAR (extrapolated) = 0.225 W/kg  
**SAR(1 g) = 0.146 W/kg; SAR(10 g) = 0.091 W/kg**  
Maximum value of SAR (measured) = 0.183 W/kg



0 dB = 0.183 W/kg

## WCDMA Band IV\_RMC 12.2Kbps\_Right Cheek\_Ch1413

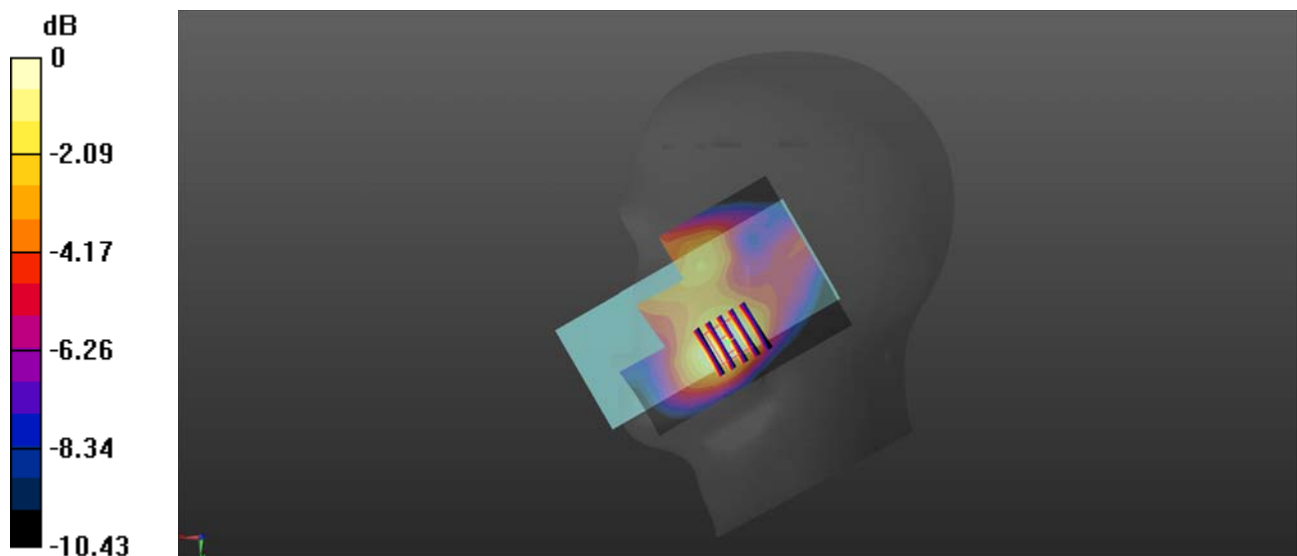
Communication System: UID 0, UMTS-FDD (0); Frequency: 1732.6 MHz; Duty Cycle: 1:1  
Medium: HSL\_1800 Medium parameters used:  $f = 1733$  MHz;  $\sigma = 1.366$  S/m;  $\epsilon_r = 41.367$ ;  $\rho = 1000$  kg/m<sup>3</sup>  
Ambient Temperature : 23.2 °C; Liquid Temperature : 22.2 °C

### DASY5 Configuration:

- Probe: EX3DV4 - SN7608; ConvF(8.26, 8.26, 8.26) @ 1732.6 MHz; Calibrated: 2022.01.12
- Sensor-Surface: 2mm (Mechanical Surface Detection)
- Electronics: DAE4 Sn1643; Calibrated: 2021.12.30
- Phantom: Twin-SAM; Type: QD 000 P41 Ax; Serial: 2020
- Measurement SW: DASY52, Version 52.10 (4); SEMCAD X Version 14.6.14 (7483)

**Ch1413/Area Scan (71x91x1):** Interpolated grid: dx=1.500 mm, dy=1.500 mm  
Maximum value of SAR (interpolated) = 0.275 W/kg

**Ch1413/Zoom Scan (5x5x7)/Cube 0:** Measurement grid: dx=8mm, dy=8mm, dz=5mm  
Reference Value = 6.979 V/m; Power Drift = 0.05 dB  
Peak SAR (extrapolated) = 0.324 W/kg  
**SAR(1 g) = 0.216 W/kg; SAR(10 g) = 0.139 W/kg**  
Maximum value of SAR (measured) = 0.267 W/kg



0 dB = 0.267 W/kg

## WCDMA Band V\_RMC 12.2Kbps\_Right Cheek\_Ch4182

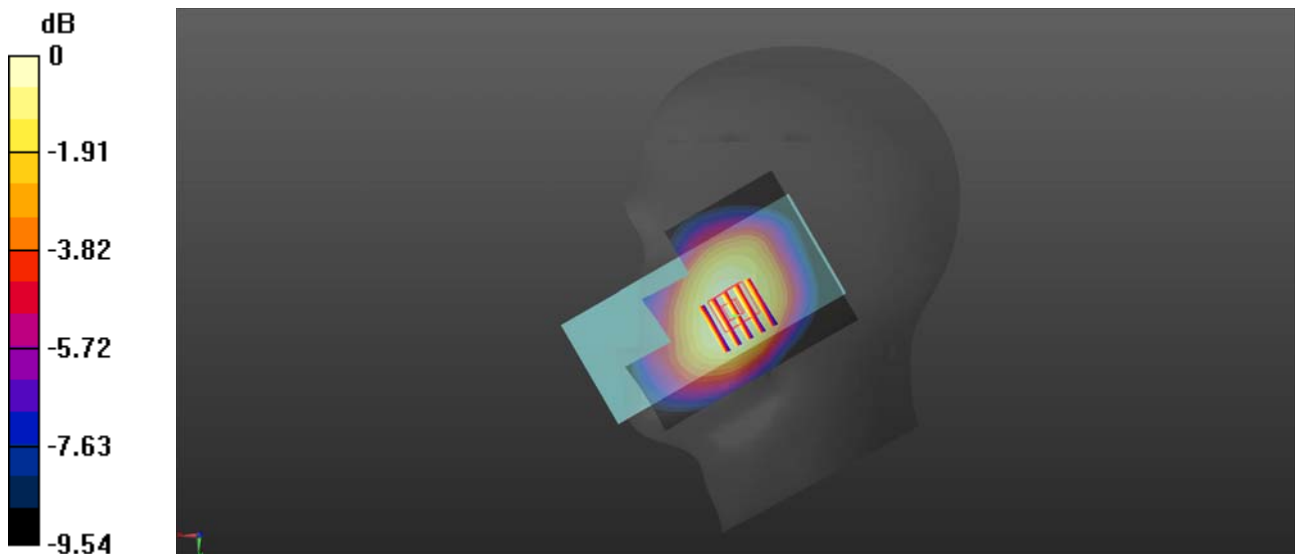
Communication System: UID 0, UMTS-FDD (0); Frequency: 836.4 MHz; Duty Cycle: 1:1  
Medium: HSL\_900 Medium parameters used:  $f = 836.4$  MHz;  $\sigma = 0.958$  S/m;  $\epsilon_r = 40.843$ ;  $\rho = 1000$  kg/m<sup>3</sup>  
Ambient Temperature : 23.2 °C; Liquid Temperature : 22.1 °C

### DASY5 Configuration:

- Probe: EX3DV4 - SN7608; ConvF(9.81, 9.81, 9.81) @ 836.4 MHz; Calibrated: 2022.01.12
- Sensor-Surface: 2mm (Mechanical Surface Detection)
- Electronics: DAE4 Sn1643; Calibrated: 2021.12.30
- Phantom: Twin-SAM; Type: QD 000 P41 Ax; Serial: 2020
- Measurement SW: DASY52, Version 52.10 (4); SEMCAD X Version 14.6.14 (7483)

**Ch4182/Area Scan (71x91x1):** Interpolated grid: dx=1.500 mm, dy=1.500 mm  
Maximum value of SAR (interpolated) = 0.258 W/kg

**Ch4182/Zoom Scan (5x5x7)/Cube 0:** Measurement grid: dx=8mm, dy=8mm, dz=5mm  
Reference Value = 3.783 V/m; Power Drift = 0.07 dB  
Peak SAR (extrapolated) = 0.272 W/kg  
**SAR(1 g) = 0.213 W/kg; SAR(10 g) = 0.165 W/kg**  
Maximum value of SAR (measured) = 0.244 W/kg



0 dB = 0.244 W/kg

## LTE Band 2\_20MHz\_QPSK\_1RB\_0Offset\_Right Cheek\_Ch18900

Communication System: UID 0, LTE (0); Frequency: 1880 MHz; Duty Cycle: 1:1

Medium: HSL\_2000 Medium parameters used:  $f = 1880$  MHz;  $\sigma = 1.321$  S/m;  $\epsilon_r = 39.882$ ;  $\rho = 1000$  kg/m<sup>3</sup>

Ambient Temperature : 23.2 °C; Liquid Temperature : 22.2 °C

DASY5 Configuration:

- Probe: EX3DV4 - SN7608; ConvF(7.99, 7.99, 7.99) @ 1880 MHz; Calibrated: 2022.01.12
- Sensor-Surface: 2mm (Mechanical Surface Detection)
- Electronics: DAE4 Sn1643; Calibrated: 2021.12.30
- Phantom: Twin-SAM; Type: QD 000 P41 Ax; Serial: 2020
- Measurement SW: DASY52, Version 52.10 (4); SEMCAD X Version 14.6.14 (7483)

**Ch18900/Area Scan (71x91x1):** Interpolated grid: dx=1.500 mm, dy=1.500 mm

Maximum value of SAR (interpolated) = 0.208 W/kg

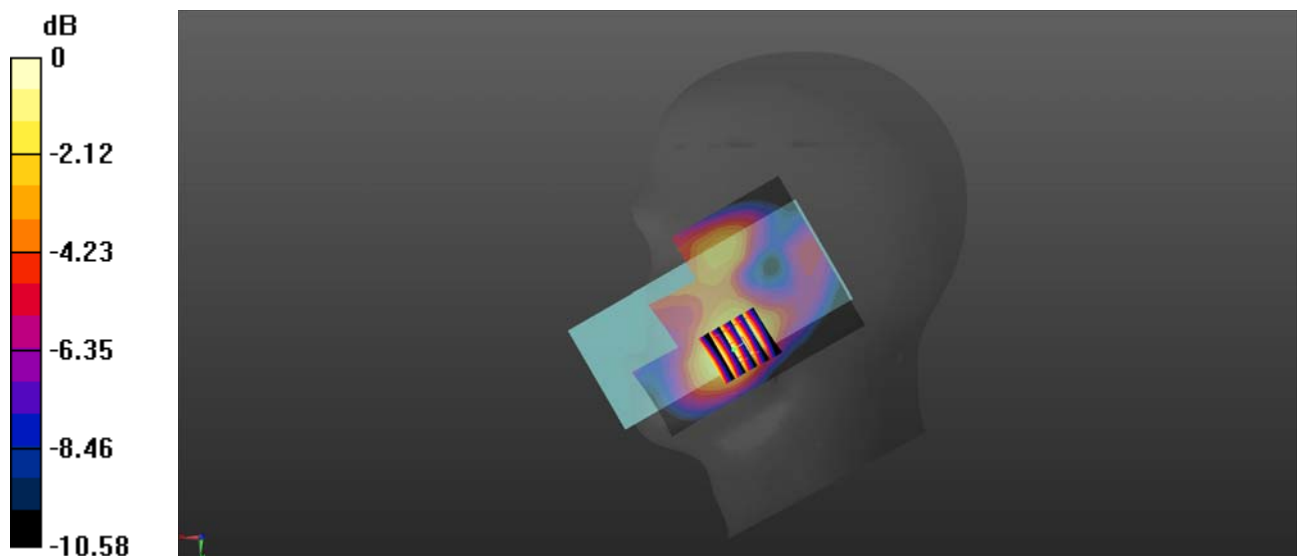
**Ch18900/Zoom Scan (5x5x7)/Cube 0:** Measurement grid: dx=8mm, dy=8mm, dz=5mm

Reference Value = 5.775 V/m; Power Drift = 0.02 dB

Peak SAR (extrapolated) = 0.252 W/kg

**SAR(1 g) = 0.164 W/kg; SAR(10 g) = 0.103 W/kg**

Maximum value of SAR (measured) = 0.206 W/kg



0 dB = 0.206 W/kg

## LTE Band 4\_20MHz\_QPSK\_1RB\_0Offset\_Right Cheek\_Ch20175

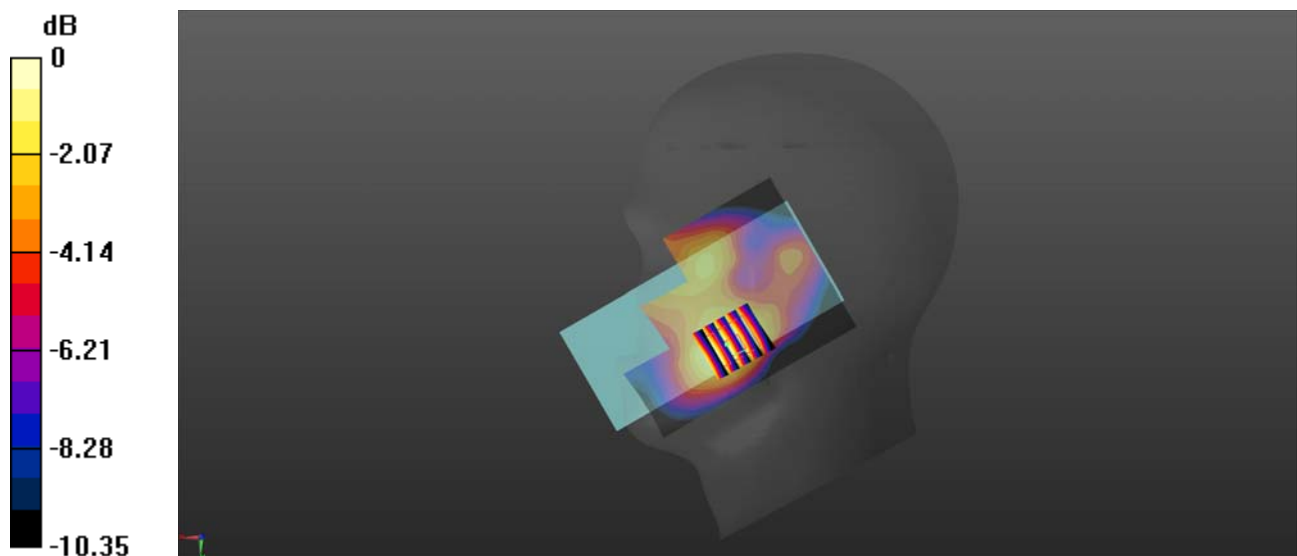
Communication System: UID 0, LTE (0); Frequency: 1732.5 MHz; Duty Cycle: 1:1  
Medium: HSL\_1800 Medium parameters used:  $f = 1733$  MHz;  $\sigma = 1.366$  S/m;  $\epsilon_r = 41.367$ ;  $\rho = 1000$  kg/m<sup>3</sup>  
Ambient Temperature : 23.2 °C; Liquid Temperature : 22.2 °C

### DASY5 Configuration:

- Probe: EX3DV4 - SN7608; ConvF(8.26, 8.26, 8.26) @ 1732.5 MHz; Calibrated: 2022.01.12
- Sensor-Surface: 2mm (Mechanical Surface Detection)
- Electronics: DAE4 Sn1643; Calibrated: 2021.12.30
- Phantom: Twin-SAM; Type: QD 000 P41 Ax; Serial: 2020
- Measurement SW: DASY52, Version 52.10 (4); SEMCAD X Version 14.6.14 (7483)

**Ch20175/Area Scan (71x91x1):** Interpolated grid: dx=1.500 mm, dy=1.500 mm  
Maximum value of SAR (interpolated) = 0.272 W/kg

**Ch20175/Zoom Scan (5x5x7)/Cube 0:** Measurement grid: dx=8mm, dy=8mm, dz=5mm  
Reference Value = 6.834 V/m; Power Drift = 0.06 dB  
Peak SAR (extrapolated) = 0.325 W/kg  
**SAR(1 g) = 0.216 W/kg; SAR(10 g) = 0.139 W/kg**  
Maximum value of SAR (measured) = 0.260 W/kg



0 dB = 0.260 W/kg



## LTE Band 5\_10MHz\_QPSK\_1RB\_0Offset\_Right Cheek\_Ch20525

Communication System: UID 0, LTE (0); Frequency: 836.5 MHz; Duty Cycle: 1:1

Medium: HSL\_900 Medium parameters used:  $f = 836.5$  MHz;  $\sigma = 0.958$  S/m;  $\epsilon_r = 40.846$ ;  $\rho = 1000$  kg/m<sup>3</sup>

Ambient Temperature : 23.2 °C; Liquid Temperature : 22.1 °C

DASY5 Configuration:

- Probe: EX3DV4 - SN7608; ConvF(9.81, 9.81, 9.81) @ 836.5 MHz; Calibrated: 2022.01.12
- Sensor-Surface: 2mm (Mechanical Surface Detection)
- Electronics: DAE4 Sn1643; Calibrated: 2021.12.30
- Phantom: Twin-SAM; Type: QD 000 P41 Ax; Serial: 2020
- Measurement SW: DASY52, Version 52.10 (4); SEMCAD X Version 14.6.14 (7483)

**Ch20525/Area Scan (71x91x1):** Interpolated grid: dx=1.500 mm, dy=1.500 mm

Maximum value of SAR (interpolated) = 0.273 W/kg

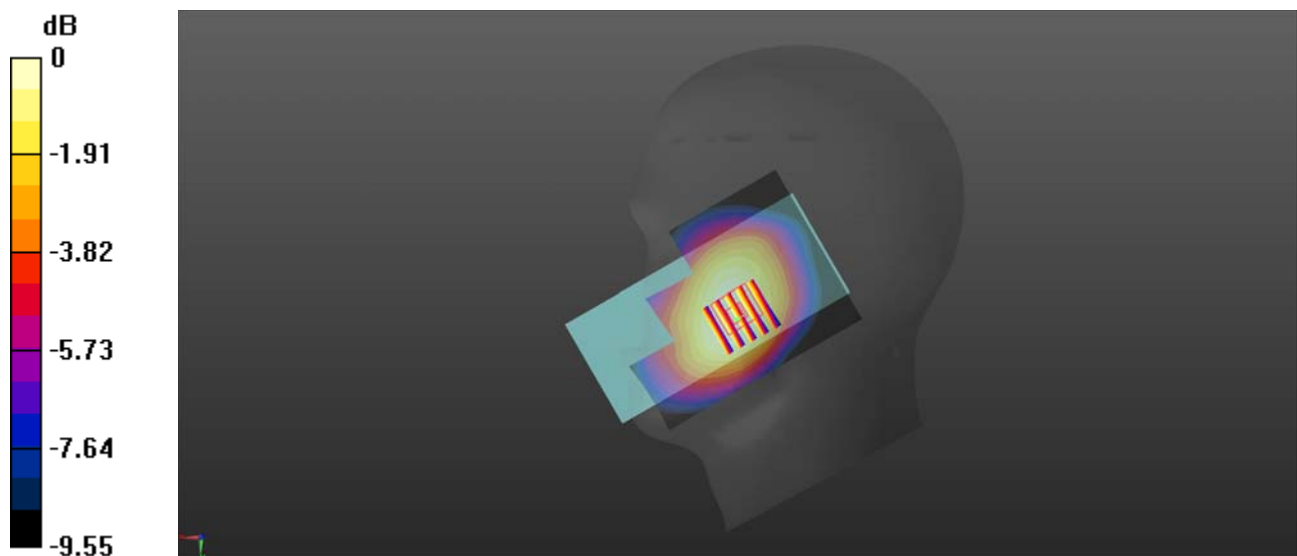
**Ch20525/Zoom Scan (5x5x7)/Cube 0:** Measurement grid: dx=8mm, dy=8mm, dz=5mm

Reference Value = 4.445 V/m; Power Drift = 0.03 dB

Peak SAR (extrapolated) = 0.282 W/kg

**SAR(1 g) = 0.219 W/kg; SAR(10 g) = 0.168 W/kg**

Maximum value of SAR (measured) = 0.253 W/kg



0 dB = 0.253 W/kg

## LTE Band 12\_10MHz\_QPSK\_1RB\_0Offset\_Right Cheek\_Ch23095

Communication System: UID 0, LTE (0); Frequency: 707.5 MHz; Duty Cycle: 1:1

Medium: HSL\_970 Medium parameters used:  $f = 707.5$  MHz;  $\sigma = 0.891$  S/m;  $\epsilon_r = 40.871$ ;  $\rho = 1000$  kg/m<sup>3</sup>

Ambient Temperature : 23.2 °C; Liquid Temperature : 22.1 °C

DASY5 Configuration:

- Probe: EX3DV4 - SN7608; ConvF(10.2, 10.2, 10.2) @ 707.5 MHz; Calibrated: 2022.01.12
- Sensor-Surface: 2mm (Mechanical Surface Detection)
- Electronics: DAE4 Sn1643; Calibrated: 2021.12.30
- Phantom: Twin-SAM; Type: QD 000 P41 Ax; Serial: 2020
- Measurement SW: DASY52, Version 52.10 (4); SEMCAD X Version 14.6.14 (7483)

**Ch23095/Area Scan (71x91x1):** Interpolated grid: dx=1.500 mm, dy=1.500 mm

Maximum value of SAR (interpolated) = 0.231 W/kg

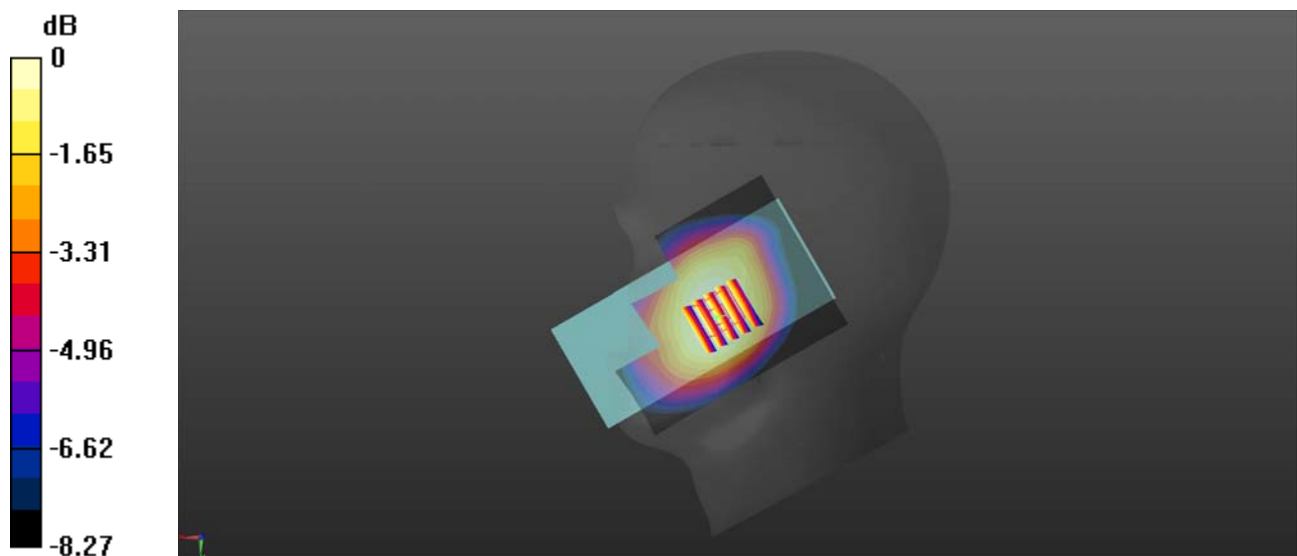
**Ch23095/Zoom Scan (5x5x7)/Cube 0:** Measurement grid: dx=8mm, dy=8mm, dz=5mm

Reference Value = 3.778 V/m; Power Drift = 0.02 dB

Peak SAR (extrapolated) = 0.237 W/kg

**SAR(1 g) = 0.191 W/kg; SAR(10 g) = 0.151 W/kg**

Maximum value of SAR (measured) = 0.216 W/kg



0 dB = 0.216 W/kg

## LTE Band 13\_10MHz\_QPSK\_1RB\_0Offset\_Right Cheek\_Ch23230

Communication System: UID 0, LTE (0); Frequency: 782 MHz; Duty Cycle: 1:1

Medium: HSL\_750 Medium parameters used:  $f = 782$  MHz;  $\sigma = 0.932$  S/m;  $\epsilon_r = 40.959$ ;  $\rho = 1000$  kg/m<sup>3</sup>

Ambient Temperature : 23.2 °C; Liquid Temperature : 22.1 °C

DASY5 Configuration:

- Probe: EX3DV4 - SN7608; ConvF(10.2, 10.2, 10.2) @ 782 MHz; Calibrated: 2022.01.12
- Sensor-Surface: 2mm (Mechanical Surface Detection)
- Electronics: DAE4 Sn1643; Calibrated: 2021.12.30
- Phantom: Twin-SAM; Type: QD 000 P41 Ax; Serial: 2020
- Measurement SW: DASY52, Version 52.10 (4); SEMCAD X Version 14.6.14 (7483)

**Ch23230/Area Scan (71x91x1):** Interpolated grid: dx=1.500 mm, dy=1.500 mm

Maximum value of SAR (interpolated) = 0.216 W/kg

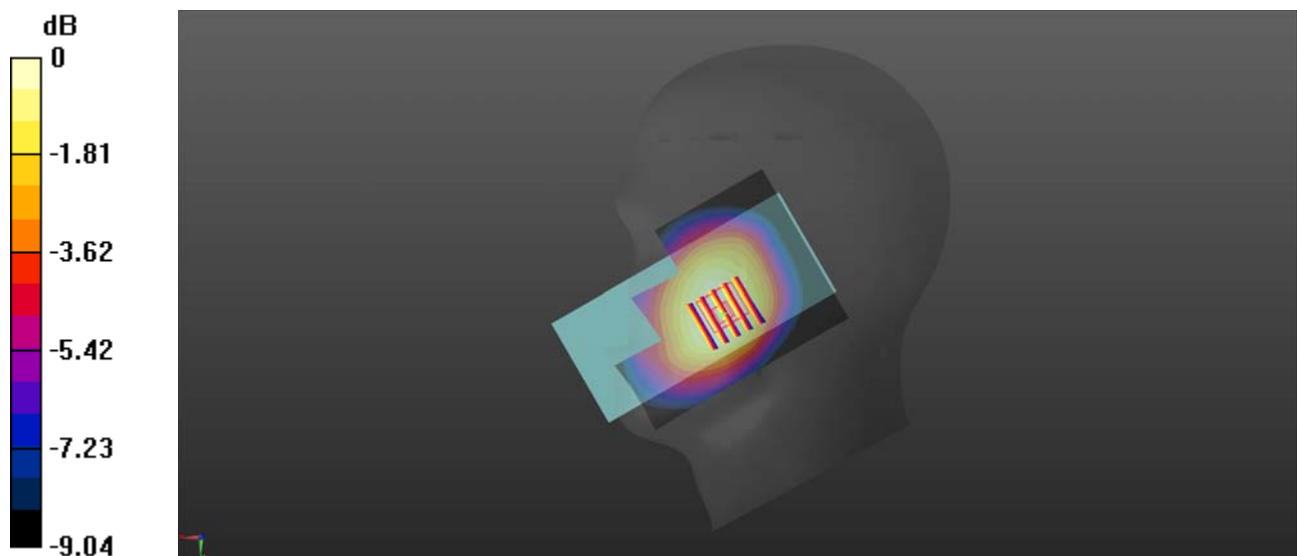
**Ch23230/Zoom Scan (5x5x7)/Cube 0:** Measurement grid: dx=8mm, dy=8mm, dz=5mm

Reference Value = 3.581 V/m; Power Drift = -0.04 dB

Peak SAR (extrapolated) = 0.237 W/kg

**SAR(1 g) = 0.183 W/kg; SAR(10 g) = 0.140 W/kg**

Maximum value of SAR (measured) = 0.209 W/kg



0 dB = 0.209 W/kg

## LTE Band 25\_20MHz\_QPSK\_1RB\_0Offset\_Right Cheek\_Ch26365

Communication System: UID 0, LTE (0); Frequency: 1882.5 MHz; Duty Cycle: 1:1

Medium: HSL\_2000 Medium parameters used:  $f = 1882.5$  MHz;  $\sigma = 1.321$  S/m;  $\epsilon_r = 39.91$ ;  $\rho = 1000$  kg/m<sup>3</sup>

Ambient Temperature : 23.2 °C; Liquid Temperature : 22.2 °C

DASY5 Configuration:

- Probe: EX3DV4 - SN7608; ConvF(7.99, 7.99, 7.99) @ 1882.5 MHz; Calibrated: 2022.01.12
- Sensor-Surface: 2mm (Mechanical Surface Detection)
- Electronics: DAE4 Sn1643; Calibrated: 2021.12.30
- Phantom: Twin-SAM; Type: QD 000 P41 Ax; Serial: 2020
- Measurement SW: DASY52, Version 52.10 (4); SEMCAD X Version 14.6.14 (7483)

**Ch26365/Area Scan (71x91x1):** Interpolated grid: dx=1.500 mm, dy=1.500 mm

Maximum value of SAR (interpolated) = 0.175 W/kg

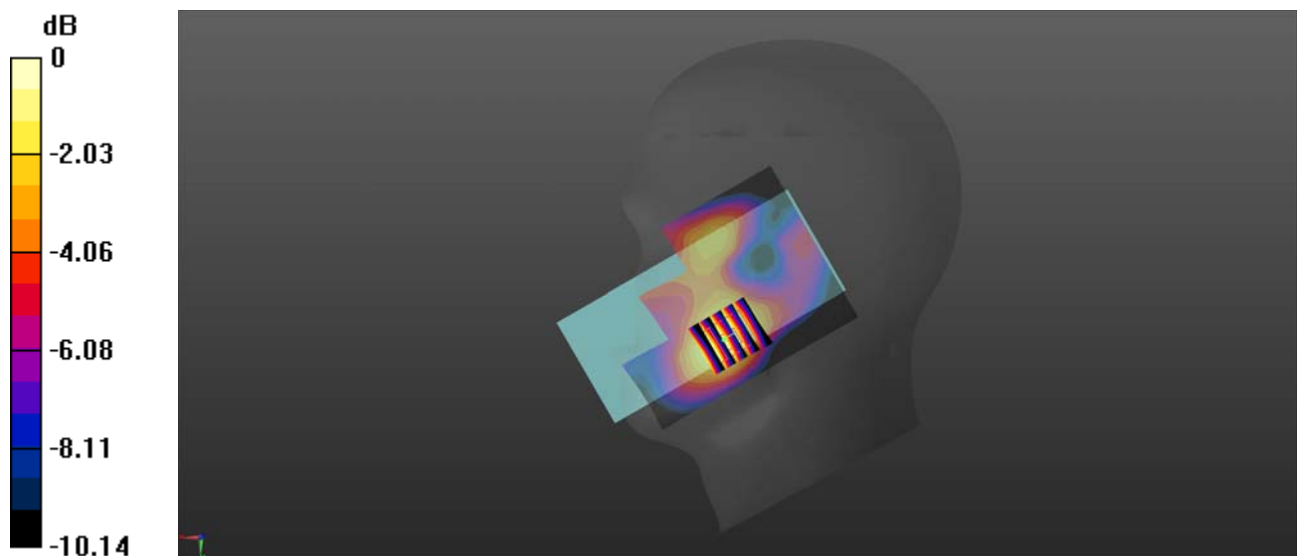
**Ch26365/Zoom Scan (5x5x7)/Cube 0:** Measurement grid: dx=8mm, dy=8mm, dz=5mm

Reference Value = 5.202 V/m; Power Drift = 0.09 dB

Peak SAR (extrapolated) = 0.218 W/kg

**SAR(1 g) = 0.141 W/kg; SAR(10 g) = 0.088 W/kg**

Maximum value of SAR (measured) = 0.172 W/kg



0 dB = 0.172 W/kg

## LTE Band 26\_15MHz\_QPSK\_1RB\_0Offset\_Right Cheek\_Ch26865

Communication System: UID 0, LTE (0); Frequency: 831.5 MHz; Duty Cycle: 1:1

Medium: HSL\_900 Medium parameters used:  $f = 831.5$  MHz;  $\sigma = 0.956$  S/m;  $\epsilon_r = 40.861$ ;  $\rho = 1000$  kg/m<sup>3</sup>

Ambient Temperature : 23.2 °C; Liquid Temperature : 22.1 °C

DASY5 Configuration:

- Probe: EX3DV4 - SN7608; ConvF(9.81, 9.81, 9.81) @ 831.5 MHz; Calibrated: 2022.01.12
- Sensor-Surface: 2mm (Mechanical Surface Detection)
- Electronics: DAE4 Sn1643; Calibrated: 2021.12.30
- Phantom: Twin-SAM; Type: QD 000 P41 Ax; Serial: 2020
- Measurement SW: DASY52, Version 52.10 (4); SEMCAD X Version 14.6.14 (7483)

**Ch26865/Area Scan (71x91x1):** Interpolated grid: dx=1.500 mm, dy=1.500 mm

Maximum value of SAR (interpolated) = 0.242 W/kg

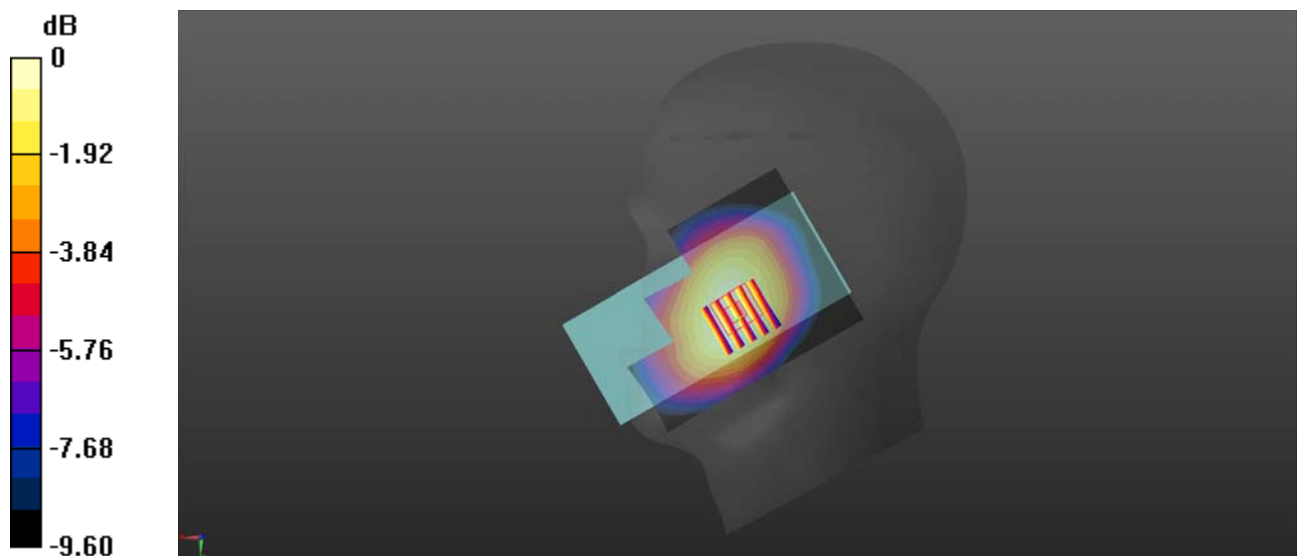
**Ch26865/Zoom Scan (5x5x7)/Cube 0:** Measurement grid: dx=8mm, dy=8mm, dz=5mm

Reference Value = 3.447 V/m; Power Drift = 0.04 dB

Peak SAR (extrapolated) = 0.259 W/kg

**SAR(1 g) = 0.202 W/kg; SAR(10 g) = 0.154 W/kg**

Maximum value of SAR (measured) = 0.233 W/kg



0 dB = 0.233 W/kg

## LTE Band 41\_20MHz\_QPSK\_1RB\_0Offset\_Right Cheek\_Ch40620

Communication System: UID 0, LTE (0); Frequency: 2593 MHz; Duty Cycle: 1:1.59

Medium: HSL\_2600 Medium parameters used:  $f = 2593$  MHz;  $\sigma = 1.973$  S/m;  $\epsilon_r = 38.214$ ;  $\rho = 1000$  kg/m<sup>3</sup>

Ambient Temperature : 23.2 °C; Liquid Temperature : 22.1 °C

DASY5 Configuration:

- Probe: EX3DV4 - SN7608; ConvF(7.08, 7.08, 7.08) @ 2593 MHz; Calibrated: 2022.01.12
- Sensor-Surface: 2mm (Mechanical Surface Detection)
- Electronics: DAE4 Sn1643; Calibrated: 2021.12.30
- Phantom: Twin-SAM; Type: QD 000 P41 Ax; Serial: 2020
- Measurement SW: DASY52, Version 52.10 (4); SEMCAD X Version 14.6.14 (7483)

**Ch40620/Area Scan (71x91x1):** Interpolated grid: dx=1.200 mm, dy=1.200 mm

Maximum value of SAR (interpolated) = 0.227 W/kg

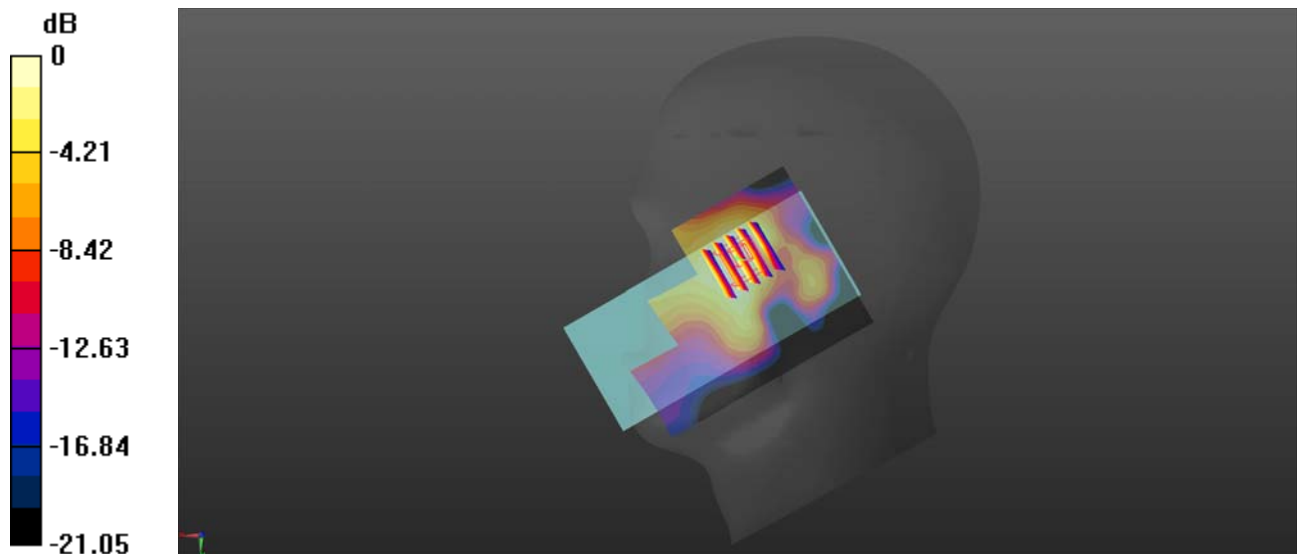
**Ch40620/Zoom Scan (5x5x7)/Cube 0:** Measurement grid: dx=5mm, dy=5mm, dz=5mm

Reference Value = 0 V/m; Power Drift = 0.05 dB

Peak SAR (extrapolated) = 0.262 W/kg

**SAR(1 g) = 0.151 W/kg; SAR(10 g) = 0.086 W/kg**

Maximum value of SAR (measured) = 0.199 W/kg



0 dB = 0.199 W/kg

## LTE Band 66\_20MHz\_QPSK\_1RB\_0Offset\_Right Cheek\_Ch132322

Communication System: UID 0, LTE (0); Frequency: 1745 MHz; Duty Cycle: 1:1

Medium: HSL\_1800 Medium parameters used:  $f = 1745$  MHz;  $\sigma = 1.382$  S/m;  $\epsilon_r = 41.164$ ;  $\rho = 1000$  kg/m<sup>3</sup>

Ambient Temperature : 23.2 °C; Liquid Temperature : 22.2 °C

DASY5 Configuration:

- Probe: EX3DV4 - SN7608; ConvF(8.26, 8.26, 8.26) @ 1745 MHz; Calibrated: 2022.01.12
- Sensor-Surface: 2mm (Mechanical Surface Detection)
- Electronics: DAE4 Sn1643; Calibrated: 2021.12.30
- Phantom: Twin-SAM; Type: QD 000 P41 Ax; Serial: 2020
- Measurement SW: DASY52, Version 52.10 (4); SEMCAD X Version 14.6.14 (7483)

**Ch132322/Area Scan (71x91x1):** Interpolated grid: dx=1.500 mm, dy=1.500 mm

Maximum value of SAR (interpolated) = 0.269 W/kg

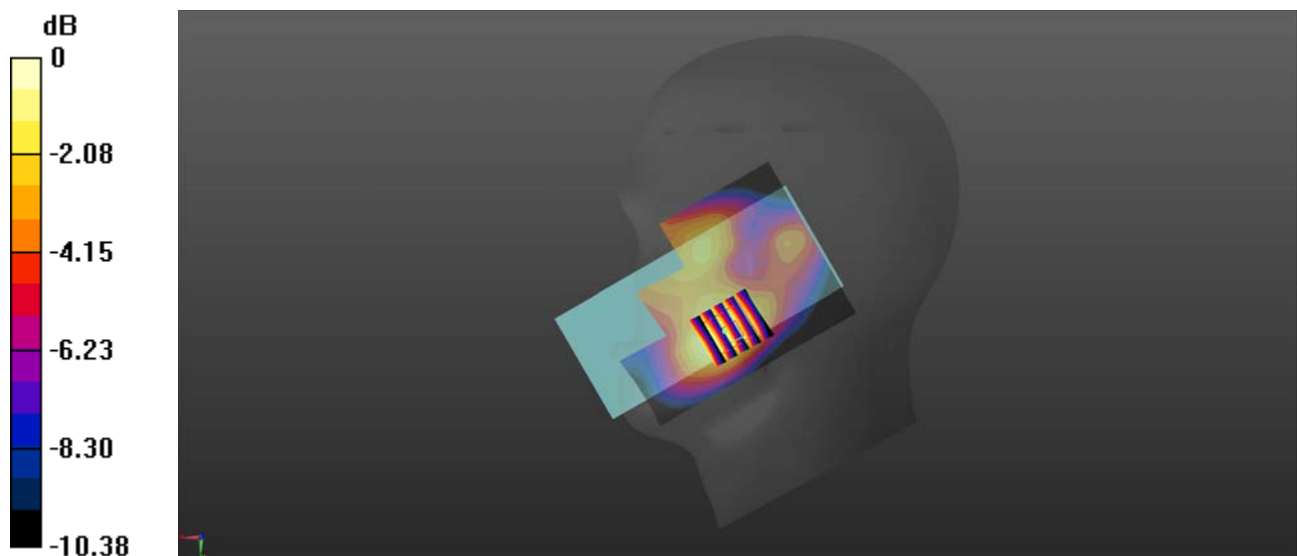
**Ch132322/Zoom Scan (5x5x7)/Cube 0:** Measurement grid: dx=8mm, dy=8mm, dz=5mm

Reference Value = 7.247 V/m; Power Drift = 0.07 dB

Peak SAR (extrapolated) = 0.322 W/kg

**SAR(1 g) = 0.212 W/kg; SAR(10 g) = 0.137 W/kg**

Maximum value of SAR (measured) = 0.259 W/kg



0 dB = 0.259 W/kg

## LTE Band 71\_20MHz\_QPSK\_1RB\_0Offset\_Right Cheek\_Ch133322

Communication System: UID 0, LTE (0); Frequency: 683 MHz; Duty Cycle: 1:1

Medium: HSL\_750 Medium parameters used:  $f = 683$  MHz;  $\sigma = 0.825$  S/m;  $\epsilon_r = 44.876$ ;  $\rho = 1000$  kg/m<sup>3</sup>

Ambient Temperature : 23.2 °C; Liquid Temperature : 22.1 °C

DASY5 Configuration:

- Probe: EX3DV4 - SN7608; ConvF(10.2, 10.2, 10.2) @ 683 MHz; Calibrated: 2022.01.12
- Sensor-Surface: 2mm (Mechanical Surface Detection)
- Electronics: DAE4 Sn1643; Calibrated: 2021.12.30
- Phantom: Twin-SAM; Type: QD 000 P41 Ax; Serial: 2020
- Measurement SW: DASY52, Version 52.10 (4); SEMCAD X Version 14.6.14 (7483)

**Ch133322/Area Scan (71x91x1):** Interpolated grid: dx=1.500 mm, dy=1.500 mm

Maximum value of SAR (interpolated) = 0.159 W/kg

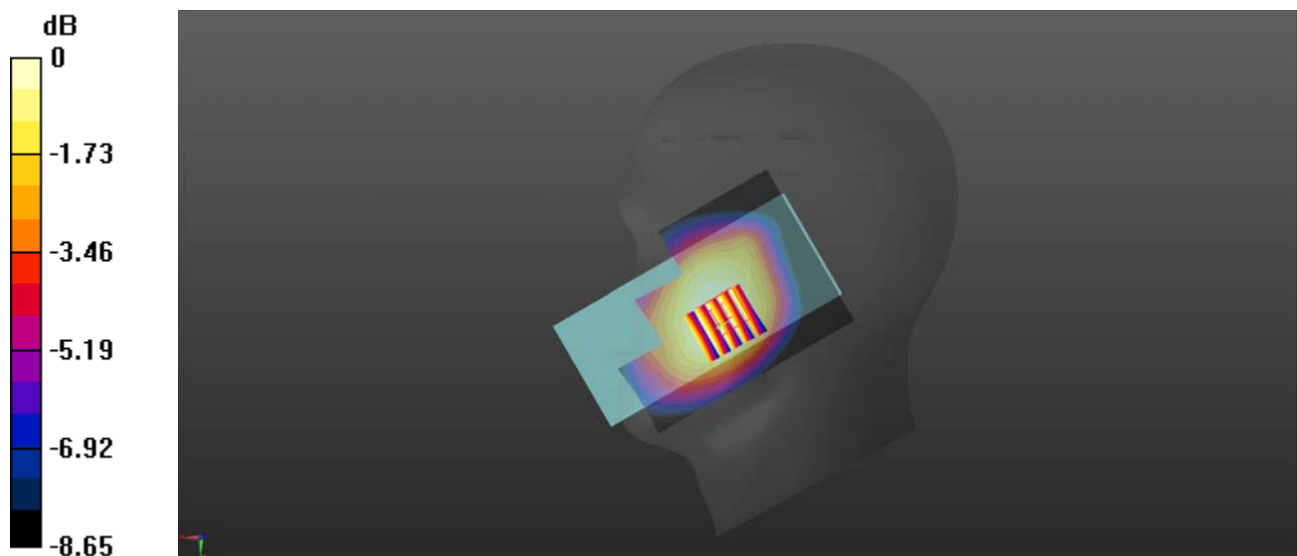
**Ch133322/Zoom Scan (5x5x7)/Cube 0:** Measurement grid: dx=8mm, dy=8mm, dz=5mm

Reference Value = 2.179 V/m; Power Drift = 0.04 dB

Peak SAR (extrapolated) = 0.166 W/kg

**SAR(1 g) = 0.133 W/kg; SAR(10 g) = 0.104 W/kg**

Maximum value of SAR (measured) = 0.150 W/kg



0 dB = 0.150 W/kg



## WLAN 2.4GHz\_802.11b 1Mbps\_Left Cheek\_Ch7

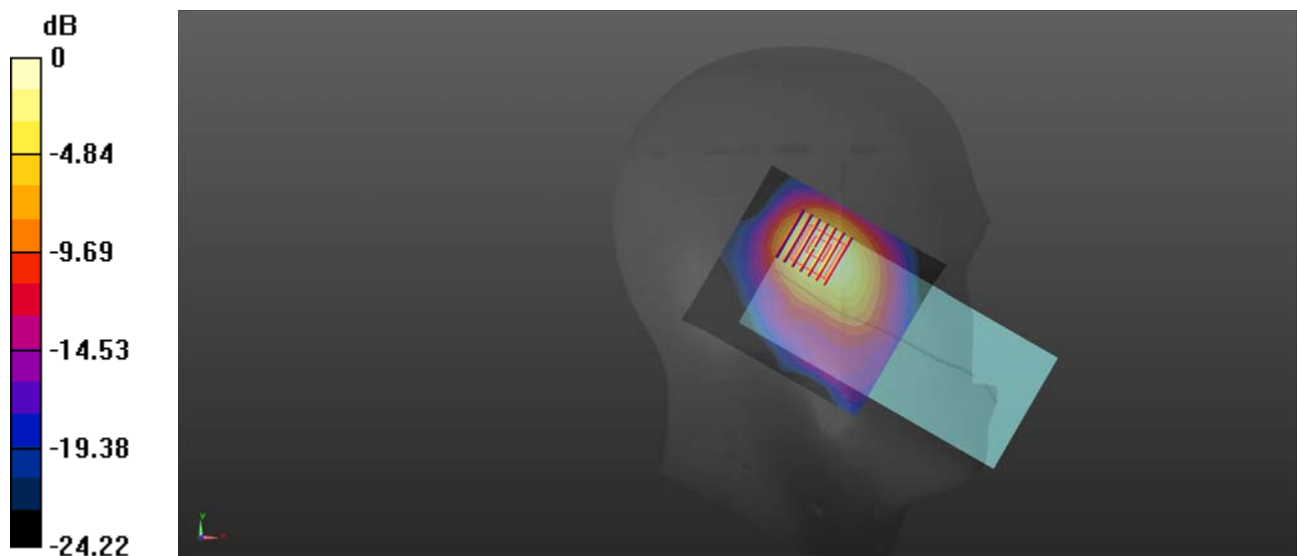
Communication System: UID 0, WLAN 2.4GHz 802.11b (0); Frequency: 2442 MHz; Duty Cycle: 1:1.012  
Medium: HSL\_2450 Medium parameters used:  $f = 2442$  MHz;  $\sigma = 1.808$  S/m;  $\epsilon_r = 38.829$ ;  $\rho = 1000$  kg/m<sup>3</sup>  
Ambient Temperature : 23.2 °C; Liquid Temperature : 22.1 °C

### DASY5 Configuration:

- Probe: EX3DV4 - SN7608; ConvF(7.42, 7.42, 7.42) @ 2442 MHz; Calibrated: 2022.01.12
- Sensor-Surface: 2mm (Mechanical Surface Detection)
- Electronics: DAE4 Sn1643; Calibrated: 2021.12.30
- Phantom: Twin-SAM; Type: QD 000 P41 Ax; Serial: 2020
- Measurement SW: DASY52, Version 52.10 (4); SEMCAD X Version 14.6.14 (7483)

**Ch7/Area Scan (81x91x1):** Interpolated grid: dx=1.200 mm, dy=1.200 mm  
Maximum value of SAR (interpolated) = 1.08 W/kg

**Ch7/Zoom Scan (7x7x7)/Cube 0:** Measurement grid: dx=5mm, dy=5mm, dz=5mm  
Reference Value = 6.420 V/m; Power Drift = -0.00 dB  
Peak SAR (extrapolated) = 1.29 W/kg  
**SAR(1 g) = 0.664 W/kg; SAR(10 g) = 0.331 W/kg**  
Maximum value of SAR (measured) = 0.951 W/kg



0 dB = 0.951 W/kg

## WLAN 5.2GHz\_802.11n-HT40 MCS0\_Left Cheek\_Ch46

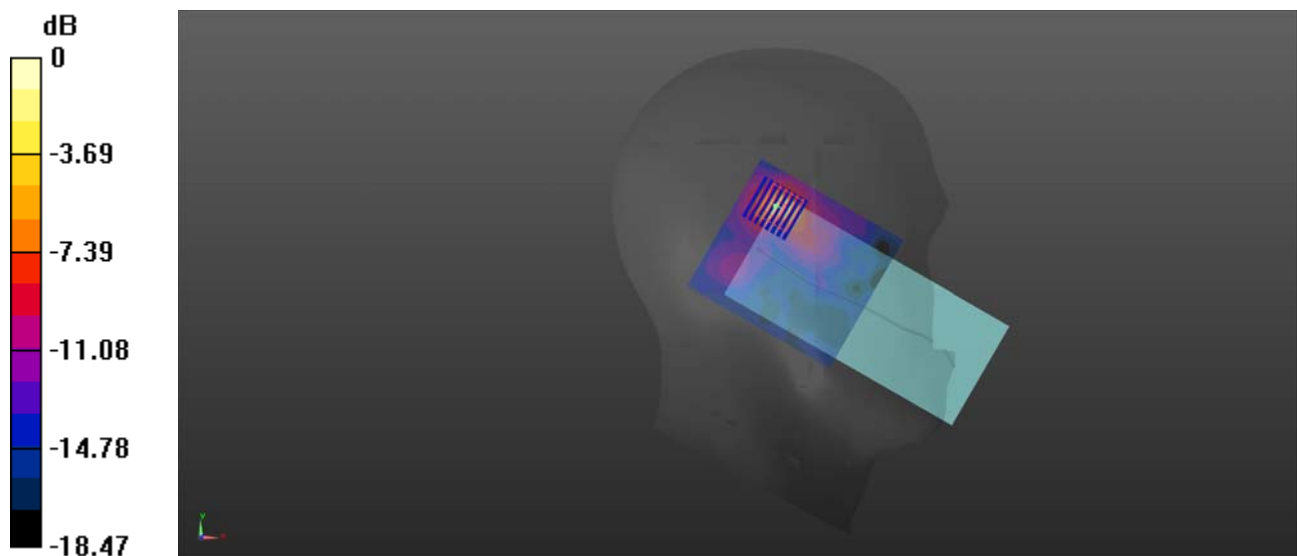
Communication System: UID 0, WLAN 5GHz (0); Frequency: 5230 MHz; Duty Cycle: 1:1.038  
Medium: HSL\_5250 Medium parameters used:  $f = 5230$  MHz;  $\sigma = 4.676$  S/m;  $\epsilon_r = 36.093$ ;  $\rho = 1000$  kg/m<sup>3</sup>  
Ambient Temperature : 23.2 °C; Liquid Temperature : 22.1 °C

### DASY5 Configuration:

- Probe: EX3DV4 - SN3753; ConvF(4.56, 4.56, 4.56) @ 5250 MHz; Calibrated: 2021.07.26
- Sensor-Surface: 2mm (Mechanical Surface Detection)
- Electronics: DAE4 Sn1643; Calibrated: 2021.12.30
- Phantom: Twin-SAM; Type: QD 000 P41 Ax; Serial: 2020
- Measurement SW: DASY52, Version 52.10 (4); SEMCAD X Version 14.6.14 (7483)

**Ch46/Area Scan (91x101x1):** Interpolated grid: dx=1.000 mm, dy=1.000 mm  
Maximum value of SAR (interpolated) = 1.24 W/kg

**Ch46/Zoom Scan (8x8x15)/Cube 0:** Measurement grid: dx=4mm, dy=4mm, dz=2mm  
Reference Value = 3.570 V/m; Power Drift = 0.06 dB  
Peak SAR (extrapolated) = 3.03 W/kg  
**SAR(1 g) = 0.634 W/kg; SAR(10 g) = 0.194 W/kg**  
Maximum value of SAR (measured) = 1.34 W/kg



0 dB = 1.34 W/kg

## WLAN 5.8GHz\_802.11n-HT40 MCS0\_Left Cheek\_Ch151

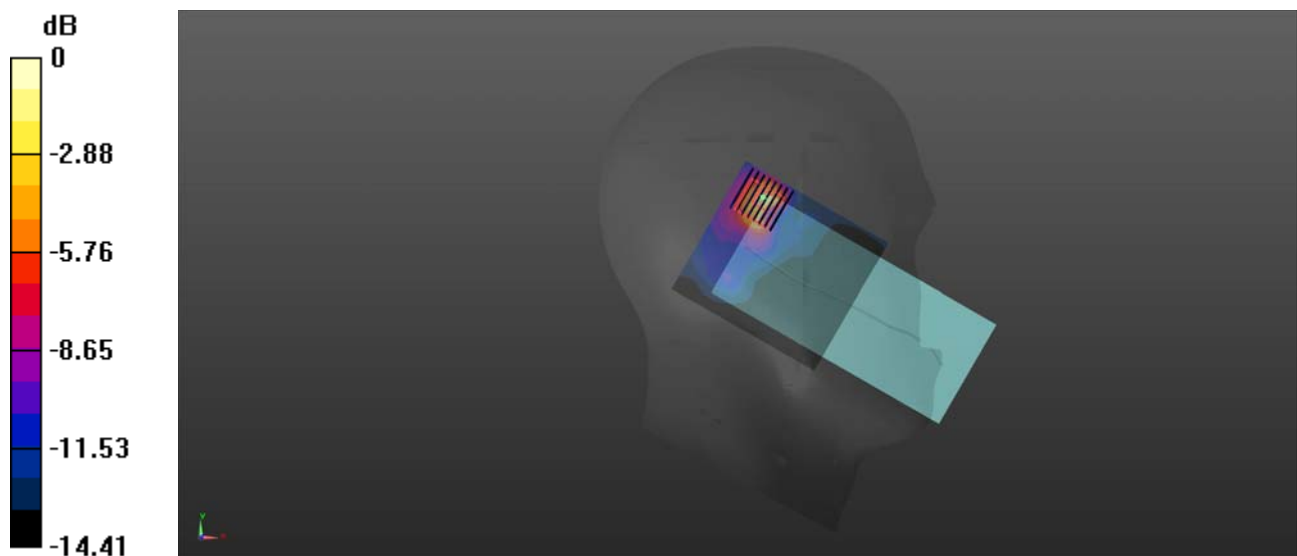
Communication System: UID 0, WLAN 5GHz (0); Frequency: 5755 MHz; Duty Cycle: 1:1.038  
Medium: HSL\_5750 Medium parameters used:  $f = 5755$  MHz;  $\sigma = 5.306$  S/m;  $\epsilon_r = 35.15$ ;  $\rho = 1000$  kg/m<sup>3</sup>  
Ambient Temperature : 23.2 °C; Liquid Temperature : 22.1 °C

### DASY5 Configuration:

- Probe: EX3DV4 - SN3753; ConvF(4.65, 4.65, 4.65) @ 5750 MHz; Calibrated: 2021.07.26
- Sensor-Surface: 2mm (Mechanical Surface Detection)
- Electronics: DAE4 Sn1643; Calibrated: 2021.12.30
- Phantom: Twin-SAM; Type: QD 000 P41 Ax; Serial: 2020
- Measurement SW: DASY52, Version 52.10 (4); SEMCAD X Version 14.6.14 (7483)

**Ch151/Area Scan (91x101x1):** Interpolated grid: dx=1.000 mm, dy=1.000 mm  
Maximum value of SAR (interpolated) = 1.18 W/kg

**Ch151/Zoom Scan (8x8x15)/Cube 0:** Measurement grid: dx=4mm, dy=4mm, dz=2mm  
Reference Value = 3.409 V/m; Power Drift = 0.06 dB  
Peak SAR (extrapolated) = 3.46 W/kg  
**SAR(1 g) = 0.648 W/kg; SAR(10 g) = 0.213 W/kg**  
Maximum value of SAR (measured) = 1.31 W/kg



0 dB = 1.31 W/kg

## GSM850\_GPRS(4 TX slots)\_Back Side\_10mm\_Ch189

Communication System: UID 0, GSM850(class 12) (0); Frequency: 836.4 MHz; Duty Cycle: 1:2.08  
Medium: HSL\_900 Medium parameters used:  $f = 836.4$  MHz;  $\sigma = 0.958$  S/m;  $\epsilon_r = 40.843$ ;  $\rho = 1000$  kg/m<sup>3</sup>

Ambient Temperature : 23.2 °C; Liquid Temperature : 22.1 °C

### DASY5 Configuration:

- Probe: EX3DV4 - SN7608; ConvF(9.81, 9.81, 9.81) @ 836.4 MHz; Calibrated: 2022.01.12
- Sensor-Surface: 2mm (Mechanical Surface Detection)
- Electronics: DAE4 Sn1643; Calibrated: 2021.12.30
- Phantom: Twin-SAM; Type: QD 000 P41 Ax; Serial: 2020
- Measurement SW: DASY52, Version 52.10 (4); SEMCAD X Version 14.6.14 (7483)

**Ch189/Area Scan (71x121x1):** Interpolated grid: dx=1.500 mm, dy=1.500 mm

Maximum value of SAR (interpolated) = 0.282 W/kg

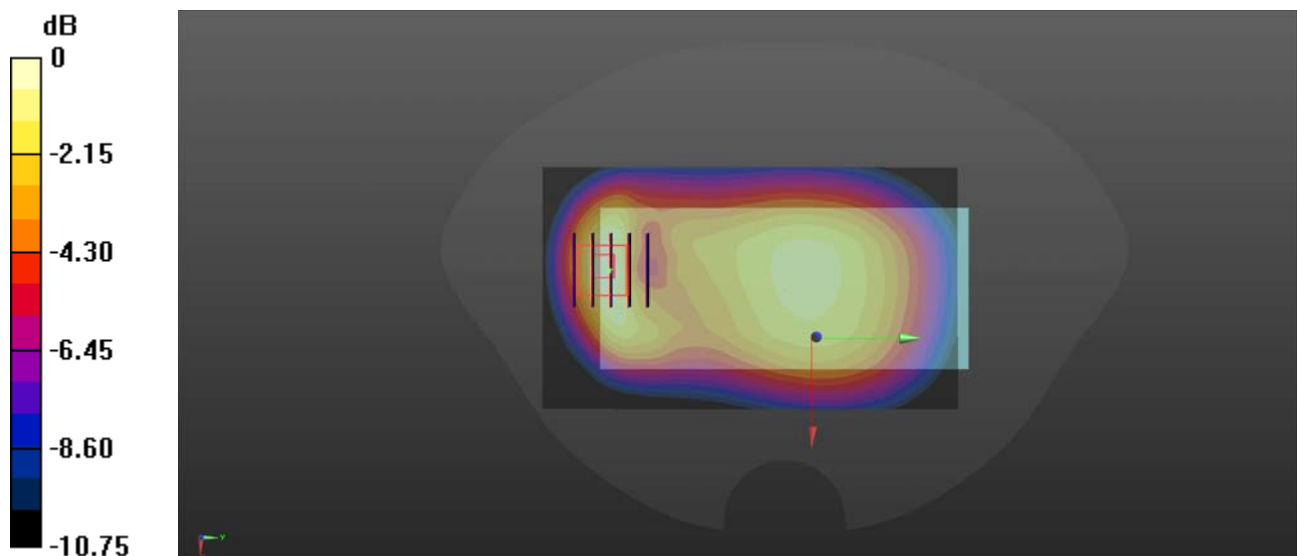
**Ch189/Zoom Scan (5x5x7)/Cube 0:** Measurement grid: dx=8mm, dy=8mm, dz=5mm

Reference Value = 14.59 V/m; Power Drift = -0.02 dB

Peak SAR (extrapolated) = 0.391 W/kg

**SAR(1 g) = 0.213 W/kg; SAR(10 g) = 0.117 W/kg**

Maximum value of SAR (measured) = 0.294 W/kg



0 dB = 0.294 W/kg

## GSM1900\_GPRS(4 TX slots)\_Back Side\_10mm\_Ch661

Communication System: UID 0, GSM1900(class 12) (0); Frequency: 1880 MHz; Duty Cycle: 1:2.08  
Medium: HSL\_2000 Medium parameters used:  $f = 1880$  MHz;  $\sigma = 1.321$  S/m;  $\epsilon_r = 39.882$ ;  $\rho = 1000$  kg/m<sup>3</sup>

Ambient Temperature : 23.2 °C; Liquid Temperature : 22.2 °C

### DASY5 Configuration:

- Probe: EX3DV4 - SN7608; ConvF(7.99, 7.99, 7.99) @ 1880 MHz; Calibrated: 2022.01.12
- Sensor-Surface: 2mm (Mechanical Surface Detection)
- Electronics: DAE4 Sn1643; Calibrated: 2021.12.30
- Phantom: Twin-SAM; Type: QD 000 P41 Ax; Serial: 2020
- Measurement SW: DASY52, Version 52.10 (4); SEMCAD X Version 14.6.14 (7483)

**Ch661/Area Scan (71x81x1):** Interpolated grid: dx=1.500 mm, dy=1.500 mm

Maximum value of SAR (interpolated) = 0.232 W/kg

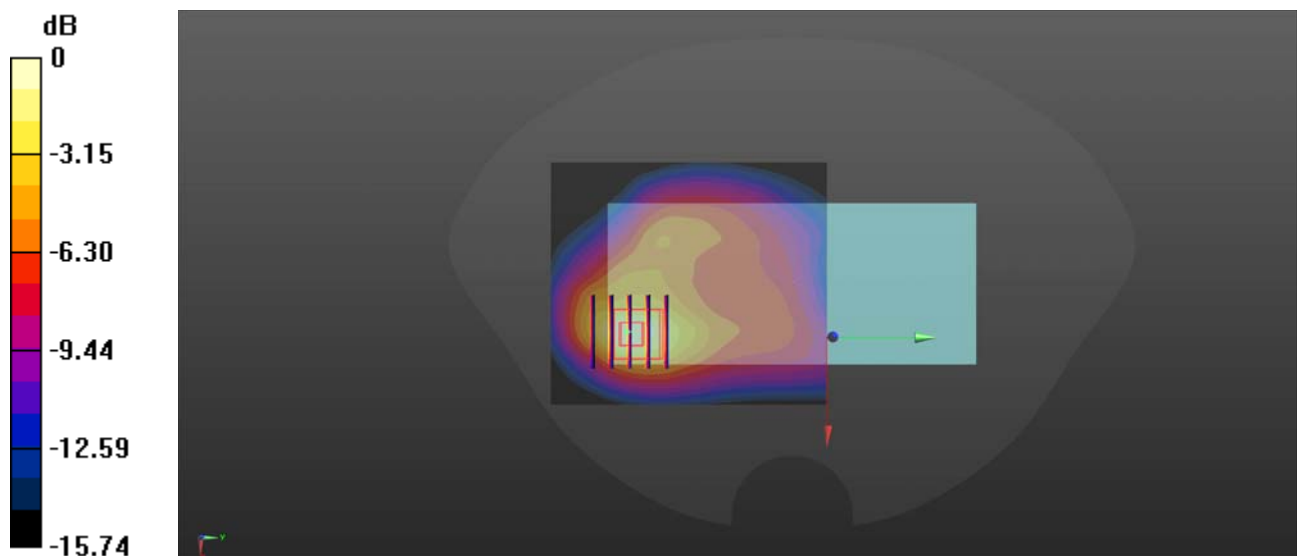
**Ch661/Zoom Scan (5x5x7)/Cube 0:** Measurement grid: dx=8mm, dy=8mm, dz=5mm

Reference Value = 4.509 V/m; Power Drift = 0.08 dB

Peak SAR (extrapolated) = 0.295 W/kg

**SAR(1 g) = 0.160 W/kg; SAR(10 g) = 0.084 W/kg**

Maximum value of SAR (measured) = 0.230 W/kg



0 dB = 0.230 W/kg

## WCDMA Band II\_RMC 12.2Kbps\_Back Side\_10mm\_Ch9400

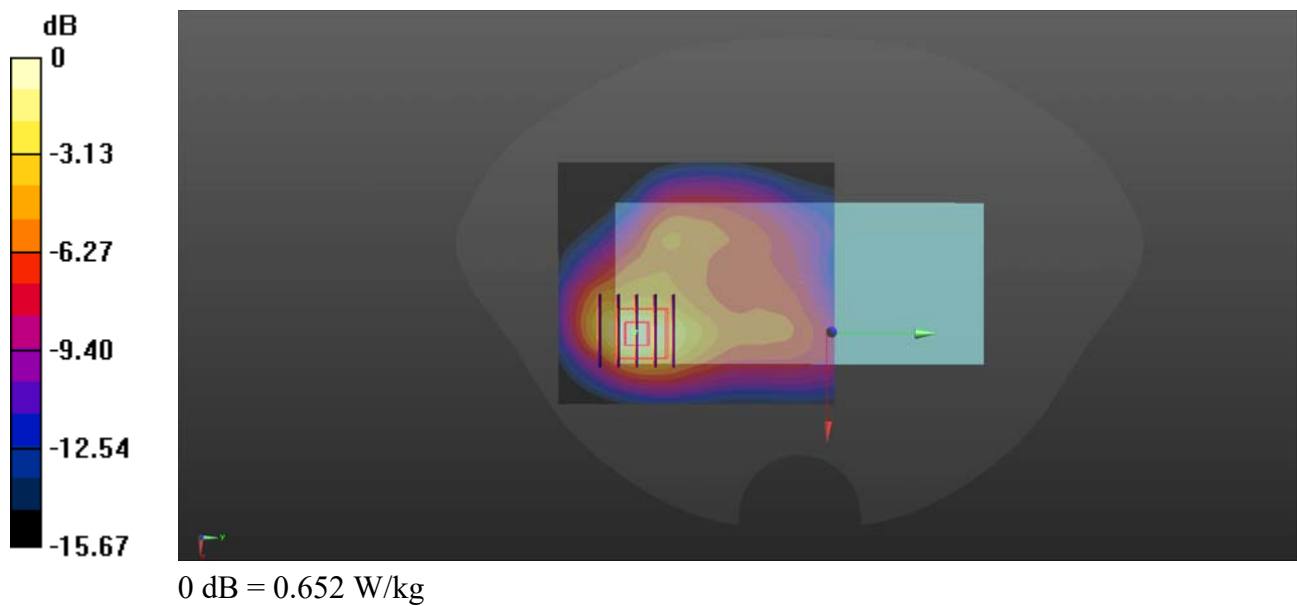
Communication System: UID 0, UMTS-FDD (0); Frequency: 1880 MHz; Duty Cycle: 1:1  
Medium: HSL\_2000 Medium parameters used:  $f = 1880$  MHz;  $\sigma = 1.321$  S/m;  $\epsilon_r = 39.882$ ;  $\rho = 1000$  kg/m<sup>3</sup>  
Ambient Temperature : 23.2 °C; Liquid Temperature : 22.2 °C

### DASY5 Configuration:

- Probe: EX3DV4 - SN7608; ConvF(7.99, 7.99, 7.99) @ 1880 MHz; Calibrated: 2022.01.12
- Sensor-Surface: 2mm (Mechanical Surface Detection)
- Electronics: DAE4 Sn1643; Calibrated: 2021.12.30
- Phantom: Twin-SAM; Type: QD 000 P41 Ax; Serial: 2020
- Measurement SW: DASY52, Version 52.10 (4); SEMCAD X Version 14.6.14 (7483)

**Ch9400/Area Scan (71x81x1):** Interpolated grid: dx=1.500 mm, dy=1.500 mm  
Maximum value of SAR (interpolated) = 0.672 W/kg

**Ch9400/Zoom Scan (5x5x7)/Cube 0:** Measurement grid: dx=8mm, dy=8mm, dz=5mm  
Reference Value = 8.279 V/m; Power Drift = 0.08 dB  
Peak SAR (extrapolated) = 0.835 W/kg  
**SAR(1 g) = 0.452 W/kg; SAR(10 g) = 0.237 W/kg**  
Maximum value of SAR (measured) = 0.652 W/kg



## WCDMA Band IV\_RMC 12.2Kbps\_Back Side\_10mm\_Ch1413

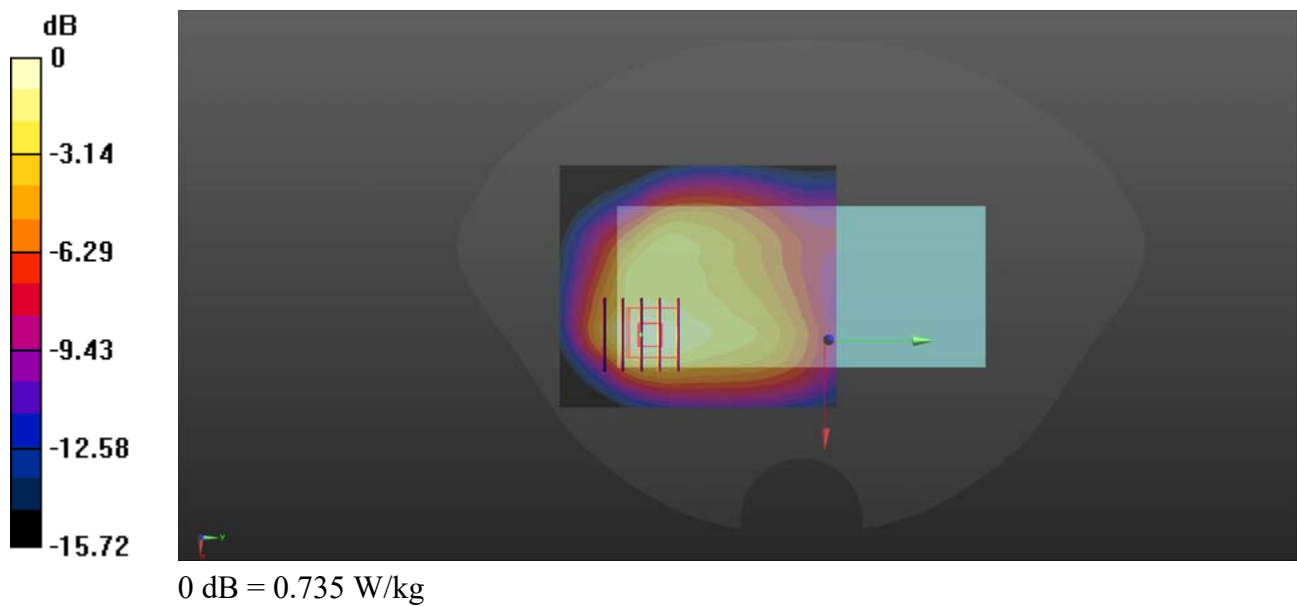
Communication System: UID 0, UMTS-FDD (0); Frequency: 1732.6 MHz; Duty Cycle: 1:1  
Medium: HSL\_1800 Medium parameters used:  $f = 1733$  MHz;  $\sigma = 1.366$  S/m;  $\epsilon_r = 41.367$ ;  $\rho = 1000$  kg/m<sup>3</sup>  
Ambient Temperature : 23.2 °C; Liquid Temperature : 22.2 °C

### DASY5 Configuration:

- Probe: EX3DV4 - SN7608; ConvF(8.26, 8.26, 8.26) @ 1732.6 MHz; Calibrated: 2022.01.12
- Sensor-Surface: 2mm (Mechanical Surface Detection)
- Electronics: DAE4 Sn1643; Calibrated: 2021.12.30
- Phantom: Twin-SAM; Type: QD 000 P41 Ax; Serial: 2020
- Measurement SW: DASY52, Version 52.10 (4); SEMCAD X Version 14.6.14 (7483)

**Ch1413/Area Scan (71x81x1):** Interpolated grid: dx=1.500 mm, dy=1.500 mm  
Maximum value of SAR (interpolated) = 0.792 W/kg

**Ch1413/Zoom Scan (5x5x7)/Cube 0:** Measurement grid: dx=8mm, dy=8mm, dz=5mm  
Reference Value = 9.668 V/m; Power Drift = -0.06 dB  
Peak SAR (extrapolated) = 0.945 W/kg  
**SAR(1 g) = 0.539 W/kg; SAR(10 g) = 0.306 W/kg**  
Maximum value of SAR (measured) = 0.735 W/kg



## WCDMA Band V\_RMC 12.2Kbps\_Back Side\_10mm\_Ch4182

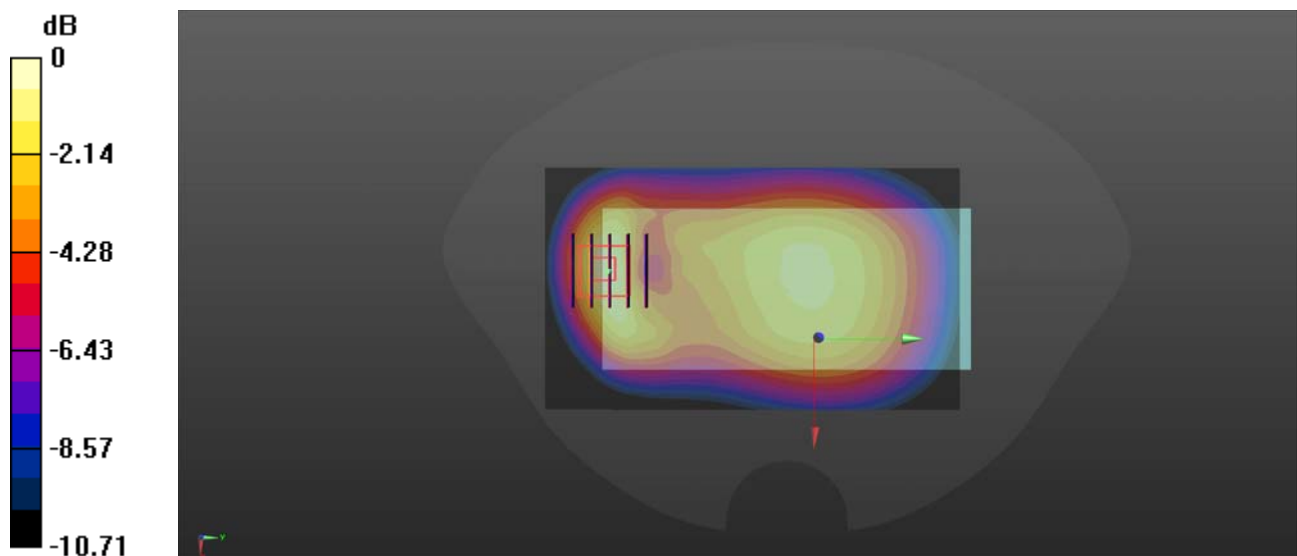
Communication System: UID 0, UMTS-FDD (0); Frequency: 836.4 MHz; Duty Cycle: 1:1  
Medium: HSL\_900 Medium parameters used:  $f = 836.4$  MHz;  $\sigma = 0.958$  S/m;  $\epsilon_r = 40.843$ ;  $\rho = 1000$  kg/m<sup>3</sup>  
Ambient Temperature : 23.2 °C; Liquid Temperature : 22.1 °C

### DASY5 Configuration:

- Probe: EX3DV4 - SN7608; ConvF(9.81, 9.81, 9.81) @ 836.4 MHz; Calibrated: 2022.01.12
- Sensor-Surface: 2mm (Mechanical Surface Detection)
- Electronics: DAE4 Sn1643; Calibrated: 2021.12.30
- Phantom: Twin-SAM; Type: QD 000 P41 Ax; Serial: 2020
- Measurement SW: DASY52, Version 52.10 (4); SEMCAD X Version 14.6.14 (7483)

**Ch4182/Area Scan (71x121x1):** Interpolated grid: dx=1.500 mm, dy=1.500 mm  
Maximum value of SAR (interpolated) = 0.330 W/kg

**Ch4182/Zoom Scan (5x5x7)/Cube 0:** Measurement grid: dx=8mm, dy=8mm, dz=5mm  
Reference Value = 16.58 V/m; Power Drift = -0.08 dB  
Peak SAR (extrapolated) = 0.477 W/kg  
**SAR(1 g) = 0.260 W/kg; SAR(10 g) = 0.143 W/kg**  
Maximum value of SAR (measured) = 0.366 W/kg





## LTE Band 2\_20MHz\_QPSK\_1RB\_0Offset\_Back Side\_10mm\_Ch18900

Communication System: UID 0, LTE (0); Frequency: 1880 MHz; Duty Cycle: 1:1

Medium: HSL\_2000 Medium parameters used:  $f = 1880$  MHz;  $\sigma = 1.321$  S/m;  $\epsilon_r = 39.882$ ;  $\rho = 1000$  kg/m<sup>3</sup>

Ambient Temperature : 23.2 °C; Liquid Temperature : 22.2 °C

DASY5 Configuration:

- Probe: EX3DV4 - SN7608; ConvF(7.99, 7.99, 7.99) @ 1880 MHz; Calibrated: 2022.01.12
- Sensor-Surface: 2mm (Mechanical Surface Detection)
- Electronics: DAE4 Sn1643; Calibrated: 2021.12.30
- Phantom: Twin-SAM; Type: QD 000 P41 Ax; Serial: 2020
- Measurement SW: DASY52, Version 52.10 (4); SEMCAD X Version 14.6.14 (7483)

**Ch18900/Area Scan (71x91x1):** Interpolated grid: dx=1.500 mm, dy=1.500 mm

Maximum value of SAR (interpolated) = 0.875 W/kg

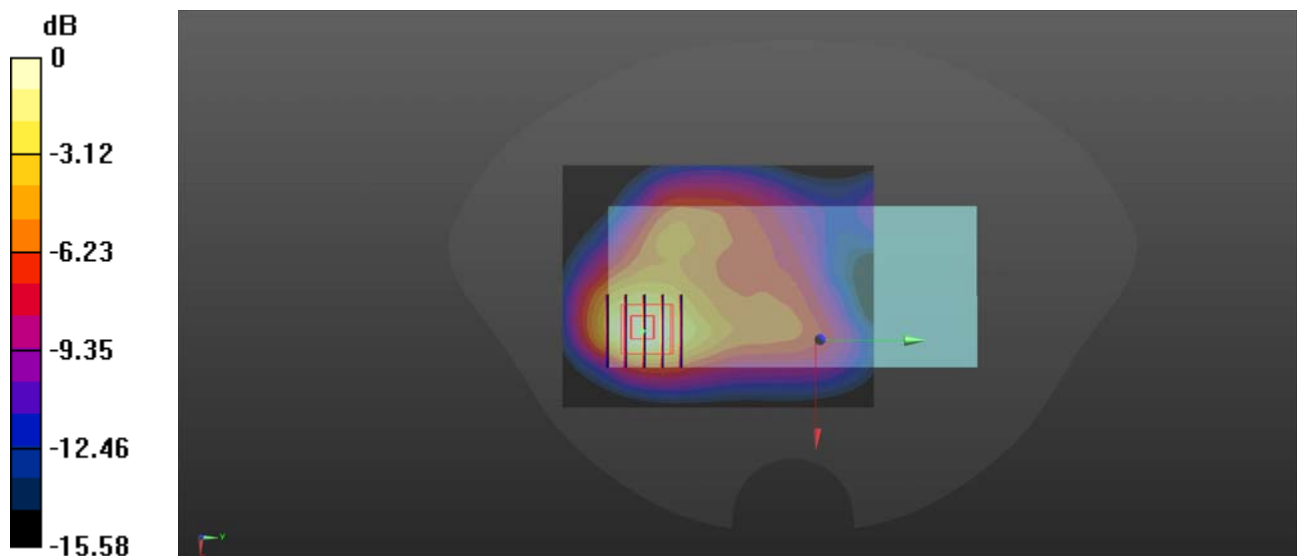
**Ch18900/Zoom Scan (5x5x7)/Cube 0:** Measurement grid: dx=8mm, dy=8mm, dz=5mm

Reference Value = 10.24 V/m; Power Drift = -0.07 dB

Peak SAR (extrapolated) = 1.03 W/kg

**SAR(1 g) = 0.560 W/kg; SAR(10 g) = 0.291 W/kg**

Maximum value of SAR (measured) = 0.783 W/kg



0 dB = 0.783 W/kg

### LTE Band 4\_20MHz\_QPSK\_1RB\_0Offset\_Back Side\_10mm\_Ch20175

Communication System: UID 0, LTE (0); Frequency: 1732.5 MHz; Duty Cycle: 1:1

Medium: HSL\_1800 Medium parameters used:  $f = 1733$  MHz;  $\sigma = 1.366$  S/m;  $\epsilon_r = 41.367$ ;  $\rho = 1000$  kg/m<sup>3</sup>

Ambient Temperature : 23.2 °C; Liquid Temperature : 22.2 °C

DASY5 Configuration:

- Probe: EX3DV4 - SN7608; ConvF(8.26, 8.26, 8.26) @ 1732.5 MHz; Calibrated: 2022.01.12
- Sensor-Surface: 2mm (Mechanical Surface Detection)
- Electronics: DAE4 Sn1643; Calibrated: 2021.12.30
- Phantom: Twin-SAM; Type: QD 000 P41 Ax; Serial: 2020
- Measurement SW: DASY52, Version 52.10 (4); SEMCAD X Version 14.6.14 (7483)

**Ch20175/Area Scan (71x91x1):** Interpolated grid: dx=1.500 mm, dy=1.500 mm

Maximum value of SAR (interpolated) = 0.813 W/kg

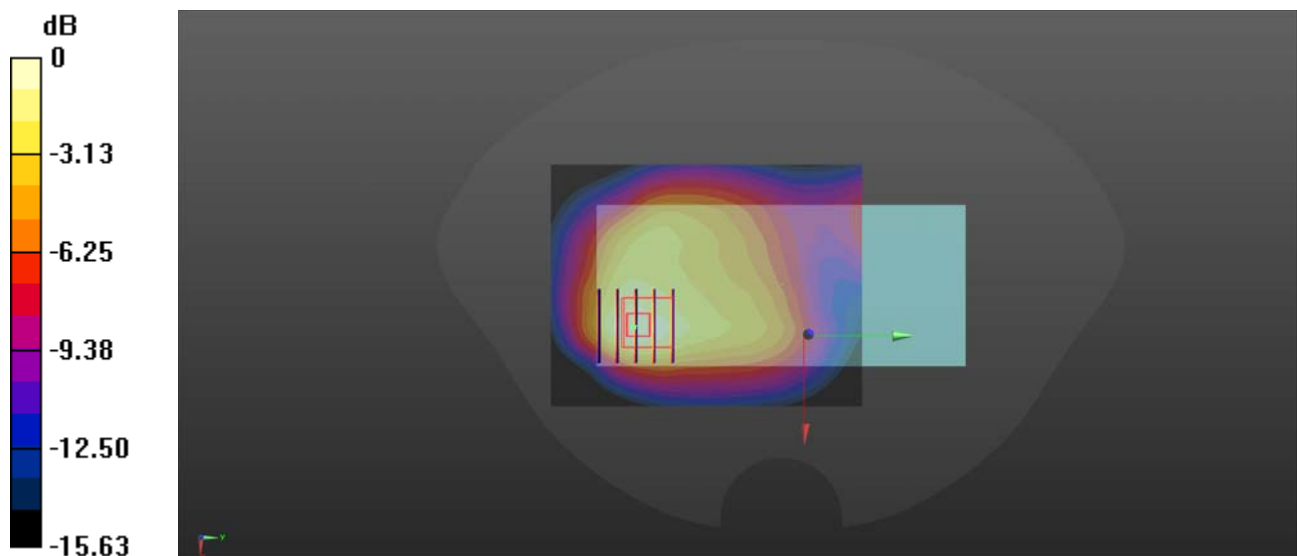
**Ch20175/Zoom Scan (5x5x7)/Cube 0:** Measurement grid: dx=8mm, dy=8mm, dz=5mm

Reference Value = 10.66 V/m; Power Drift = -0.05 dB

Peak SAR (extrapolated) = 0.996 W/kg

**SAR(1 g) = 0.554 W/kg; SAR(10 g) = 0.312 W/kg**

Maximum value of SAR (measured) = 0.767 W/kg



0 dB = 0.767 W/kg

## LTE Band 5\_10MHz\_QPSK\_1RB\_0Offset\_Back Side\_10mm\_Ch20525

Communication System: UID 0, LTE (0); Frequency: 836.5 MHz; Duty Cycle: 1:1

Medium: HSL\_900 Medium parameters used:  $f = 836.5$  MHz;  $\sigma = 0.958$  S/m;  $\epsilon_r = 40.846$ ;  $\rho = 1000$  kg/m<sup>3</sup>

Ambient Temperature : 23.2 °C; Liquid Temperature : 22.1 °C

DASY5 Configuration:

- Probe: EX3DV4 - SN7608; ConvF(9.81, 9.81, 9.81) @ 836.5 MHz; Calibrated: 2022.01.12
- Sensor-Surface: 2mm (Mechanical Surface Detection)
- Electronics: DAE4 Sn1643; Calibrated: 2021.12.30
- Phantom: Twin-SAM; Type: QD 000 P41 Ax; Serial: 2020
- Measurement SW: DASY52, Version 52.10 (4); SEMCAD X Version 14.6.14 (7483)

**Ch20525/Area Scan (71x121x1):** Interpolated grid: dx=1.500 mm, dy=1.500 mm

Maximum value of SAR (interpolated) = 0.389 W/kg

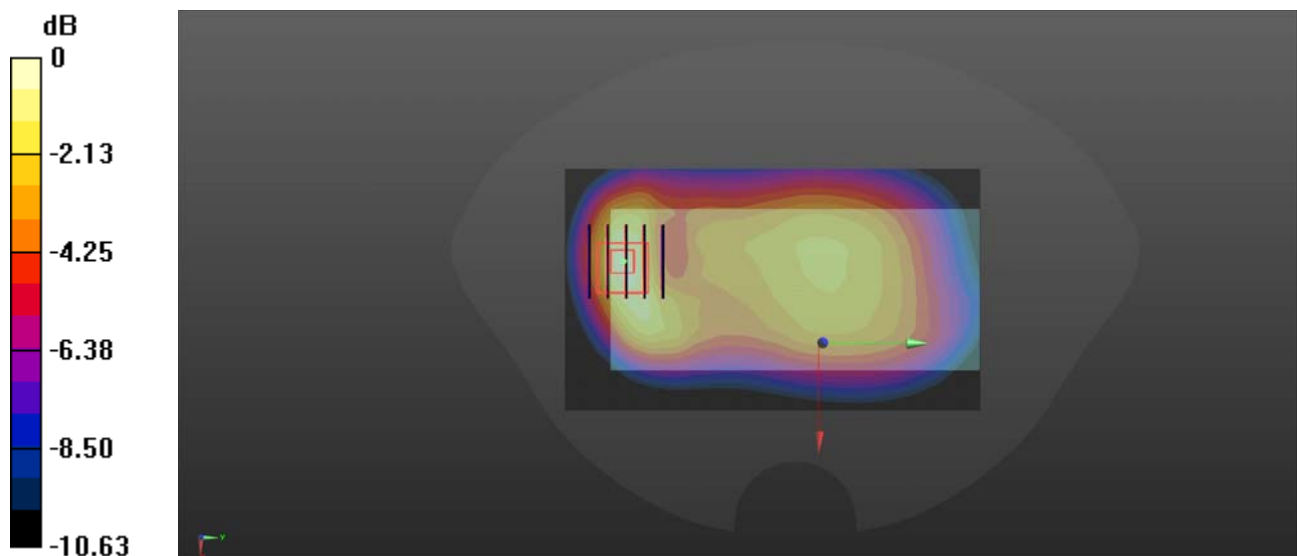
**Ch20525/Zoom Scan (5x5x7)/Cube 0:** Measurement grid: dx=8mm, dy=8mm, dz=5mm

Reference Value = 15.61 V/m; Power Drift = -0.04 dB

Peak SAR (extrapolated) = 0.571 W/kg

**SAR(1 g) = 0.305 W/kg; SAR(10 g) = 0.169 W/kg**

Maximum value of SAR (measured) = 0.440 W/kg



## LTE Band 12\_10MHz\_QPSK\_1RB\_0Offset\_Back Side\_10mm\_Ch23095

Communication System: UID 0, LTE (0); Frequency: 707.5 MHz; Duty Cycle: 1:1

Medium: HSL\_750 Medium parameters used:  $f = 707.5$  MHz;  $\sigma = 0.848$  S/m;  $\epsilon_r = 44.777$ ;  $\rho = 1000$  kg/m<sup>3</sup>

Ambient Temperature : 23.2 °C; Liquid Temperature : 22.1 °C

DASY5 Configuration:

- Probe: EX3DV4 - SN7608; ConvF(10.2, 10.2, 10.2) @ 707.5 MHz; Calibrated: 2022.01.12
- Sensor-Surface: 2mm (Mechanical Surface Detection)
- Electronics: DAE4 Sn1643; Calibrated: 2021.12.30
- Phantom: Twin-SAM; Type: QD 000 P41 Ax; Serial: 2020
- Measurement SW: DASY52, Version 52.10 (4); SEMCAD X Version 14.6.14 (7483)

**Ch23095/Area Scan (71x121x1):** Interpolated grid: dx=1.500 mm, dy=1.500 mm

Maximum value of SAR (interpolated) = 0.366 W/kg

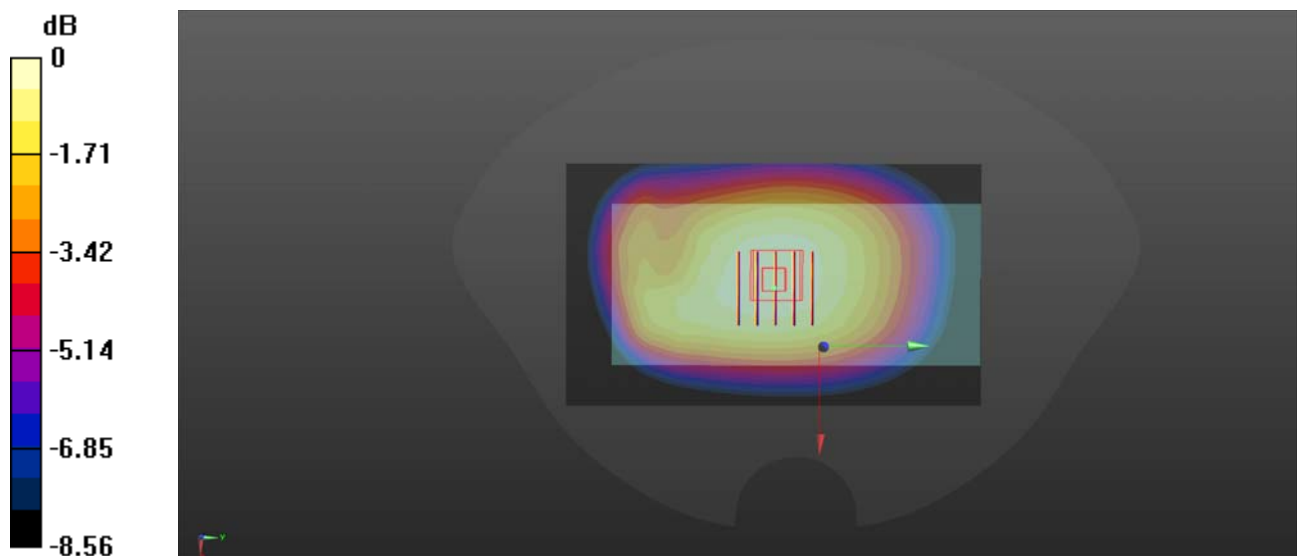
**Ch23095/Zoom Scan (5x5x7)/Cube 0:** Measurement grid: dx=8mm, dy=8mm, dz=5mm

Reference Value = 19.54 V/m; Power Drift = 0.03 dB

Peak SAR (extrapolated) = 0.419 W/kg

**SAR(1 g) = 0.325 W/kg; SAR(10 g) = 0.250 W/kg**

Maximum value of SAR (measured) = 0.376 W/kg



0 dB = 0.376 W/kg

## LTE Band 13\_10MHz\_QPSK\_1RB\_0Offset\_Back Side\_10mm\_Ch23230

Communication System: UID 0, LTE (0); Frequency: 782 MHz; Duty Cycle: 1:1

Medium: HSL\_750 Medium parameters used:  $f = 782$  MHz;  $\sigma = 0.885$  S/m;  $\epsilon_r = 43.316$ ;  $\rho = 1000$  kg/m<sup>3</sup>

Ambient Temperature : 23.2 °C; Liquid Temperature : 22.1 °C

DASY5 Configuration:

- Probe: EX3DV4 - SN7608; ConvF(10.2, 10.2, 10.2) @ 782 MHz; Calibrated: 2022.01.12
- Sensor-Surface: 2mm (Mechanical Surface Detection)
- Electronics: DAE4 Sn1643; Calibrated: 2021.12.30
- Phantom: Twin-SAM; Type: QD 000 P41 Ax; Serial: 2020
- Measurement SW: DASY52, Version 52.10 (4); SEMCAD X Version 14.6.14 (7483)

**Ch23230/Area Scan (71x121x1):** Interpolated grid: dx=1.500 mm, dy=1.500 mm

Maximum value of SAR (interpolated) = 0.297 W/kg

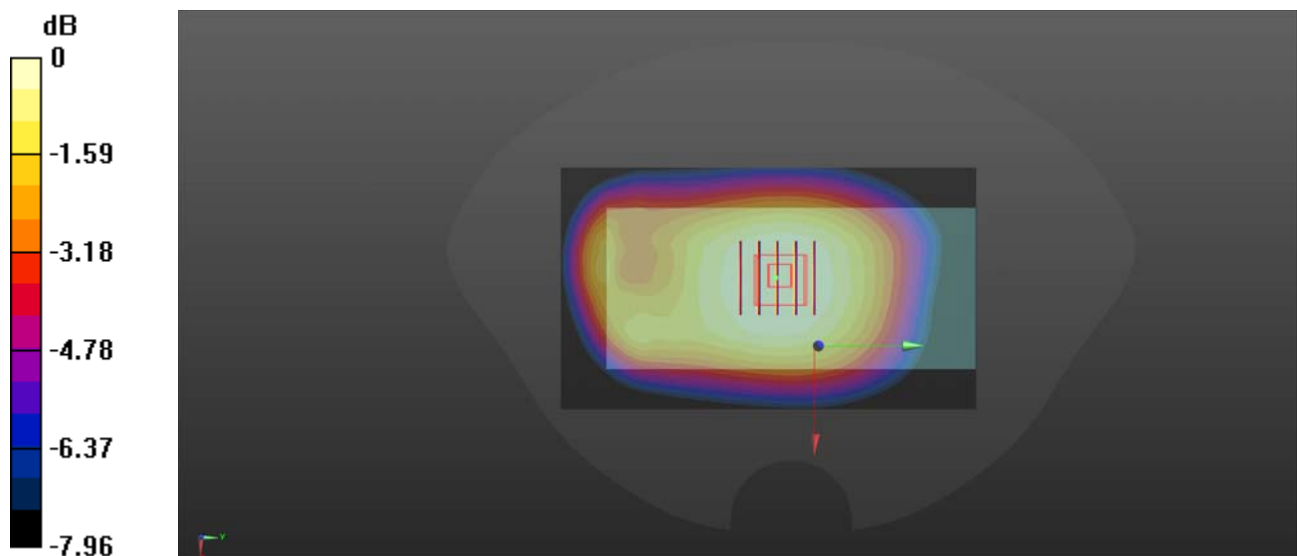
**Ch23230/Zoom Scan (5x5x7)/Cube 0:** Measurement grid: dx=8mm, dy=8mm, dz=5mm

Reference Value = 17.72 V/m; Power Drift = -0.06 dB

Peak SAR (extrapolated) = 0.321 W/kg

**SAR(1 g) = 0.248 W/kg; SAR(10 g) = 0.188 W/kg**

Maximum value of SAR (measured) = 0.288 W/kg



0 dB = 0.288 W/kg

## LTE Band 25\_20MHz\_QPSK\_1RB\_0Offset\_Back Side\_10mm\_Ch26365

Communication System: UID 0, LTE (0); Frequency: 1882.5 MHz; Duty Cycle: 1:1

Medium: HSL\_2000 Medium parameters used:  $f = 1882.5$  MHz;  $\sigma = 1.321$  S/m;  $\epsilon_r = 39.91$ ;  $\rho = 1000$  kg/m<sup>3</sup>

Ambient Temperature : 23.2 °C; Liquid Temperature : 22.2 °C

DASY5 Configuration:

- Probe: EX3DV4 - SN7608; ConvF(7.99, 7.99, 7.99) @ 1882.5 MHz; Calibrated: 2022.01.12
- Sensor-Surface: 2mm (Mechanical Surface Detection)
- Electronics: DAE4 Sn1643; Calibrated: 2021.12.30
- Phantom: Twin-SAM; Type: QD 000 P41 Ax; Serial: 2020
- Measurement SW: DASY52, Version 52.10 (4); SEMCAD X Version 14.6.14 (7483)

**Ch26365/Area Scan (71x91x1):** Interpolated grid: dx=1.500 mm, dy=1.500 mm

Maximum value of SAR (interpolated) = 0.659 W/kg

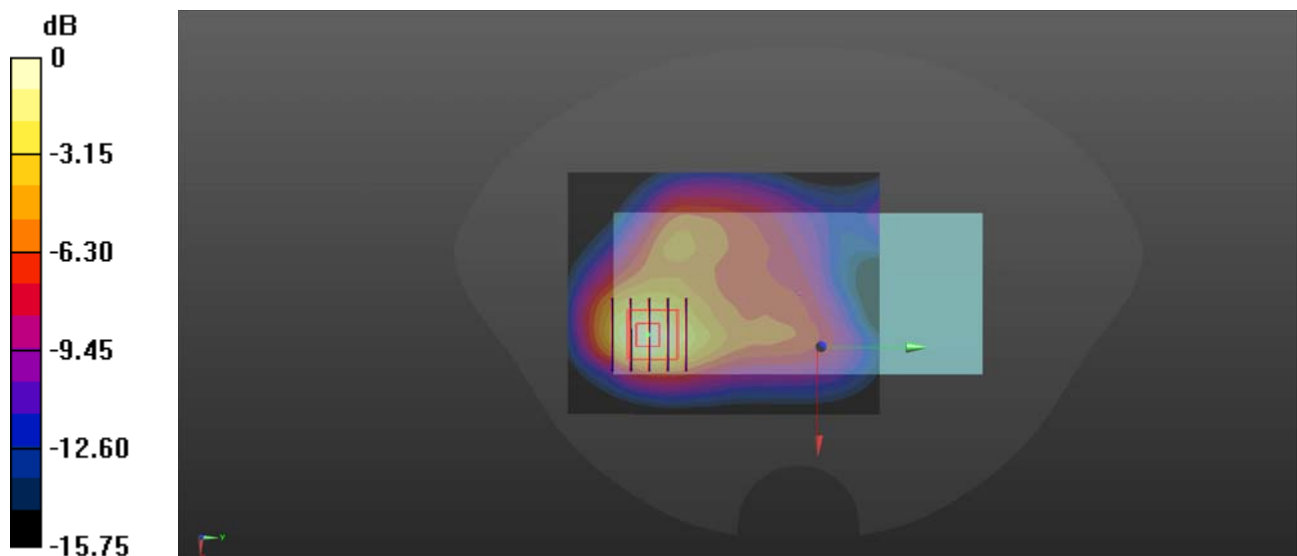
**Ch26365/Zoom Scan (5x5x7)/Cube 0:** Measurement grid: dx=8mm, dy=8mm, dz=5mm

Reference Value = 8.630 V/m; Power Drift = -0.02 dB

Peak SAR (extrapolated) = 0.857 W/kg

**SAR(1 g) = 0.466 W/kg; SAR(10 g) = 0.242 W/kg**

Maximum value of SAR (measured) = 0.671 W/kg



0 dB = 0.671 W/kg

## LTE Band 26\_15MHz\_QPSK\_1RB\_0Offset\_Back Side\_10mm\_Ch26865

Communication System: UID 0, LTE (0); Frequency: 831.5 MHz; Duty Cycle: 1:1

Medium: HSL\_900 Medium parameters used:  $f = 831.5$  MHz;  $\sigma = 0.956$  S/m;  $\epsilon_r = 40.861$ ;  $\rho = 1000$  kg/m<sup>3</sup>

Ambient Temperature : 23.2 °C; Liquid Temperature : 22.1 °C

DASY5 Configuration:

- Probe: EX3DV4 - SN7608; ConvF(9.81, 9.81, 9.81) @ 831.5 MHz; Calibrated: 2022.01.12
- Sensor-Surface: 2mm (Mechanical Surface Detection)
- Electronics: DAE4 Sn1643; Calibrated: 2021.12.30
- Phantom: Twin-SAM; Type: QD 000 P41 Ax; Serial: 2020
- Measurement SW: DASY52, Version 52.10 (4); SEMCAD X Version 14.6.14 (7483)

**Ch26865/Area Scan (71x121x1):** Interpolated grid: dx=1.500 mm, dy=1.500 mm

Maximum value of SAR (interpolated) = 0.299 W/kg

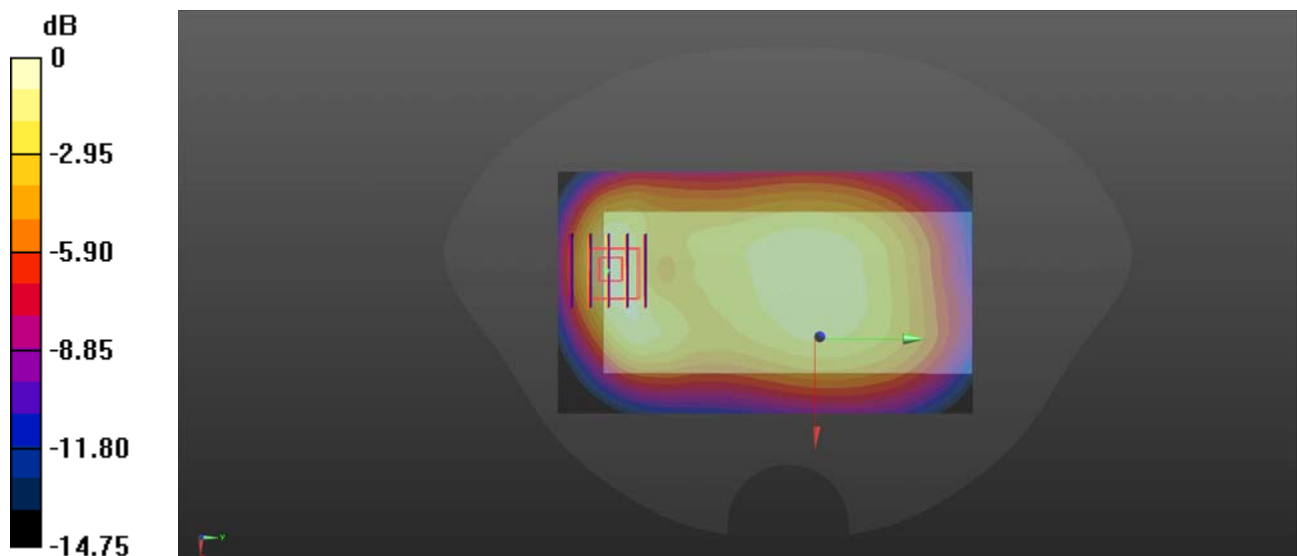
**Ch26865/Zoom Scan (5x5x7)/Cube 0:** Measurement grid: dx=8mm, dy=8mm, dz=5mm

Reference Value = 15.27 V/m; Power Drift = -0.05 dB

Peak SAR (extrapolated) = 0.447 W/kg

**SAR(1 g) = 0.243 W/kg; SAR(10 g) = 0.135 W/kg**

Maximum value of SAR (measured) = 0.331 W/kg



0 dB = 0.331 W/kg

## LTE Band 41\_20MHz\_QPSK\_1RB\_0Offset\_Back Side\_10mm\_Ch40620

Communication System: UID 0, LTE (0); Frequency: 2593 MHz; Duty Cycle: 1:1.59

Medium: HSL\_2600 Medium parameters used:  $f = 2593$  MHz;  $\sigma = 1.973$  S/m;  $\epsilon_r = 38.214$ ;  $\rho = 1000$  kg/m<sup>3</sup>

Ambient Temperature : 23.2 °C; Liquid Temperature : 22.1 °C

DASY5 Configuration:

- Probe: EX3DV4 - SN7608; ConvF(7.08, 7.08, 7.08) @ 2593 MHz; Calibrated: 2022.01.12
- Sensor-Surface: 2mm (Mechanical Surface Detection)
- Electronics: DAE4 Sn1643; Calibrated: 2021.12.30
- Phantom: Twin-SAM; Type: QD 000 P41 Ax; Serial: 2020
- Measurement SW: DASY52, Version 52.10 (4); SEMCAD X Version 14.6.14 (7483)

**Ch40620/Area Scan (71x91x1):** Interpolated grid: dx=1.200 mm, dy=1.200 mm

Maximum value of SAR (interpolated) = 0.920 W/kg

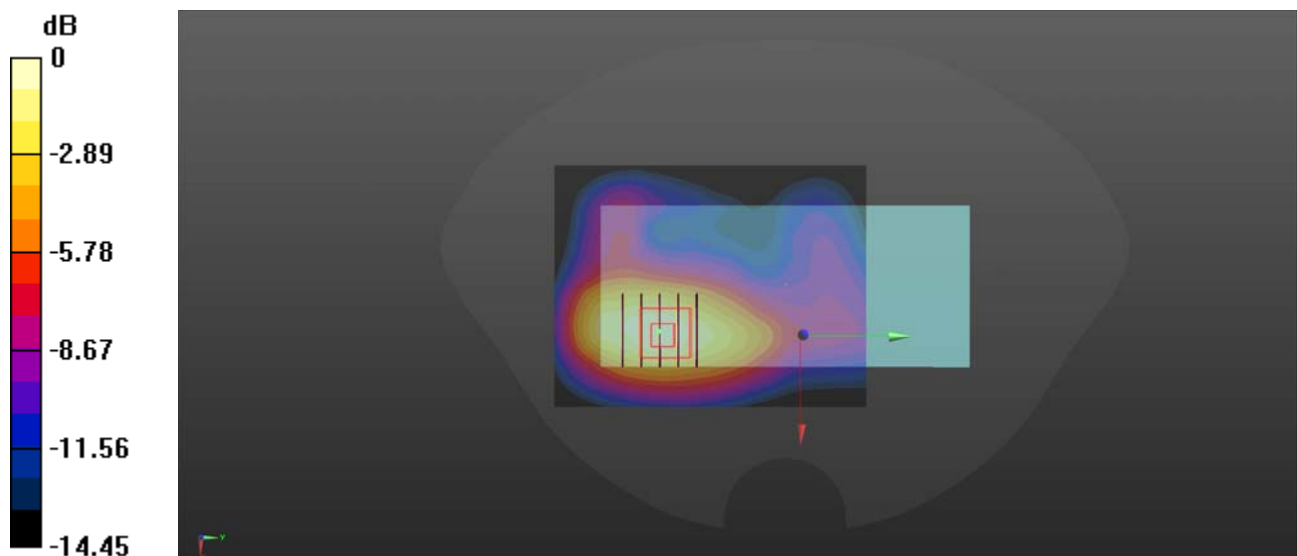
**Ch40620/Zoom Scan (5x5x7)/Cube 0:** Measurement grid: dx=5mm, dy=5mm, dz=5mm

Reference Value = 6.134 V/m; Power Drift = 0.03 dB

Peak SAR (extrapolated) = 1.17 W/kg

**SAR(1 g) = 0.624 W/kg; SAR(10 g) = 0.330 W/kg**

Maximum value of SAR (measured) = 0.889 W/kg





## LTE Band 66\_20MHz\_QPSK\_1RB\_0Offset\_Back Side\_10mm\_Ch132322

Communication System: UID 0, LTE (0); Frequency: 1745 MHz; Duty Cycle: 1:1

Medium: HSL\_1800 Medium parameters used:  $f = 1745$  MHz;  $\sigma = 1.382$  S/m;  $\epsilon_r = 41.164$ ;  $\rho = 1000$  kg/m<sup>3</sup>

Ambient Temperature : 23.2 °C; Liquid Temperature : 22.2 °C

DASY5 Configuration:

- Probe: EX3DV4 - SN7608; ConvF(8.26, 8.26, 8.26) @ 1745 MHz; Calibrated: 2022.01.12
- Sensor-Surface: 2mm (Mechanical Surface Detection)
- Electronics: DAE4 Sn1643; Calibrated: 2021.12.30
- Phantom: Twin-SAM; Type: QD 000 P41 Ax; Serial: 2020
- Measurement SW: DASY52, Version 52.10 (4); SEMCAD X Version 14.6.14 (7483)

**Ch132322/Area Scan (71x121x1):** Interpolated grid: dx=1.500 mm, dy=1.500 mm

Maximum value of SAR (interpolated) = 0.803 W/kg

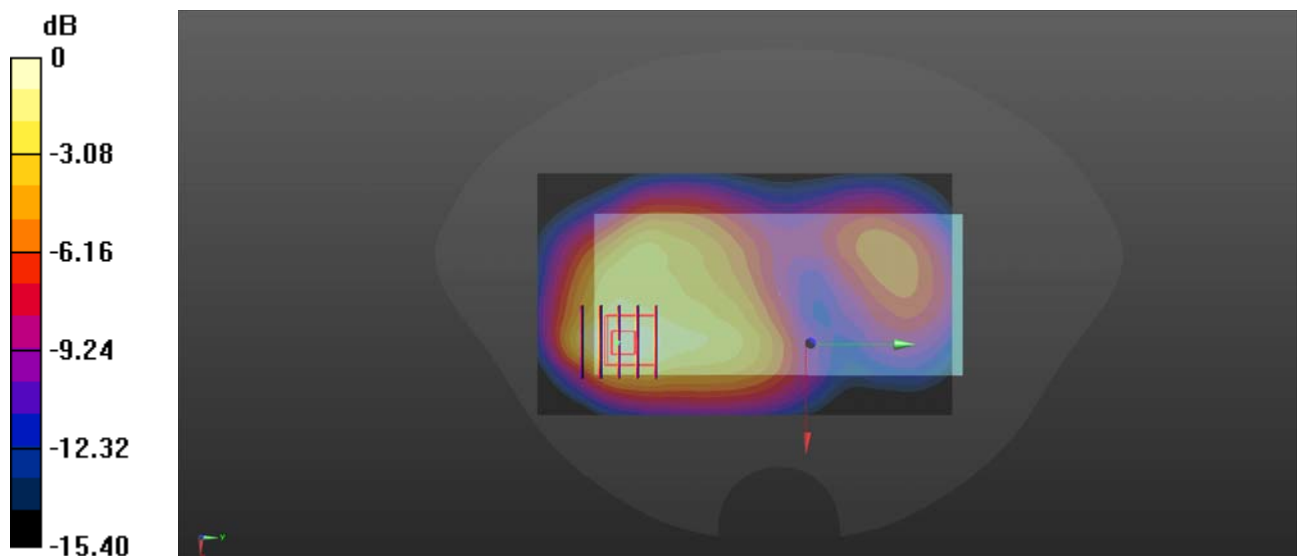
**Ch132322/Zoom Scan (5x5x7)/Cube 0:** Measurement grid: dx=8mm, dy=8mm, dz=5mm

Reference Value = 8.035 V/m; Power Drift = -0.04 dB

Peak SAR (extrapolated) = 0.893 W/kg

**SAR(1 g) = 0.505 W/kg; SAR(10 g) = 0.289 W/kg**

Maximum value of SAR (measured) = 0.692 W/kg



0 dB = 0.692 W/kg

## LTE Band 71\_20MHz\_QPSK\_1RB\_0Offset\_Back Side\_10mm\_Ch133322

Communication System: UID 0, LTE (0); Frequency: 683 MHz; Duty Cycle: 1:1

Medium: HSL\_750 Medium parameters used:  $f = 683$  MHz;  $\sigma = 0.825$  S/m;  $\epsilon_r = 44.876$ ;  $\rho = 1000$  kg/m<sup>3</sup>

Ambient Temperature : 23.2 °C; Liquid Temperature : 22.1 °C

DASY5 Configuration:

- Probe: EX3DV4 - SN7608; ConvF(10.2, 10.2, 10.2) @ 683 MHz; Calibrated: 2022.01.12
- Sensor-Surface: 2mm (Mechanical Surface Detection)
- Electronics: DAE4 Sn1643; Calibrated: 2021.12.30
- Phantom: Twin-SAM; Type: QD 000 P41 Ax; Serial: 2020
- Measurement SW: DASY52, Version 52.10 (4); SEMCAD X Version 14.6.14 (7483)

**Ch133322/Area Scan (71x121x1):** Interpolated grid: dx=1.500 mm, dy=1.500 mm

Maximum value of SAR (interpolated) = 0.300 W/kg

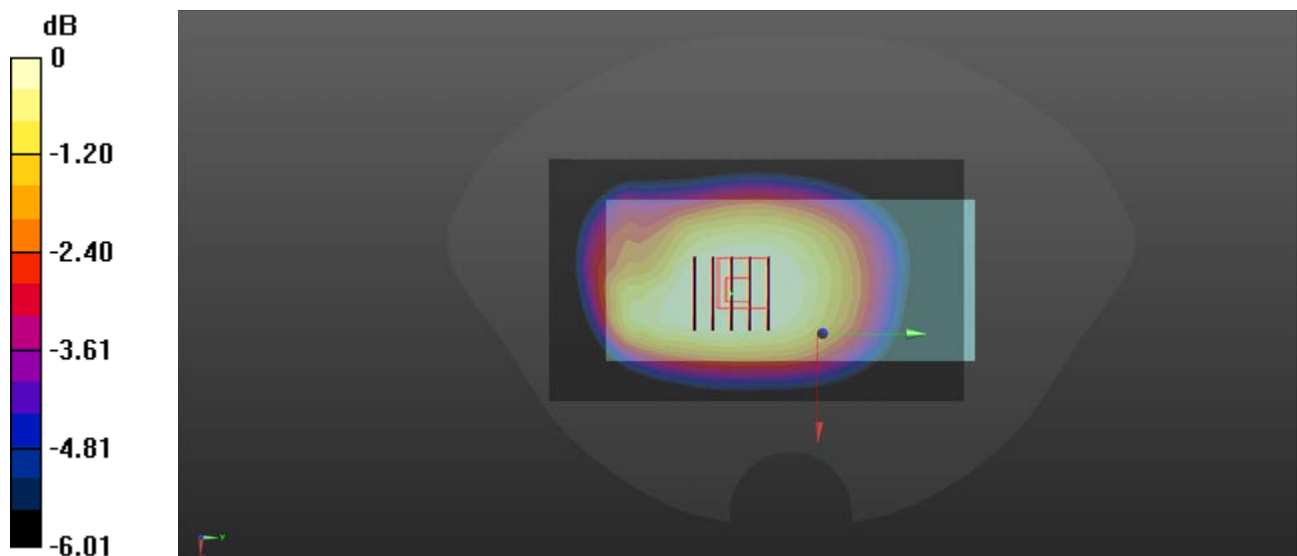
**Ch133322/Zoom Scan (5x5x7)/Cube 0:** Measurement grid: dx=8mm, dy=8mm, dz=5mm

Reference Value = 17.74 V/m; Power Drift = -0.06 dB

Peak SAR (extrapolated) = 0.306 W/kg

**SAR(1 g) = 0.238 W/kg; SAR(10 g) = 0.182 W/kg**

Maximum value of SAR (measured) = 0.275 W/kg



## WLAN 2.4GHz\_802.11b 1Mbps\_Back Side\_10mm\_Ch7

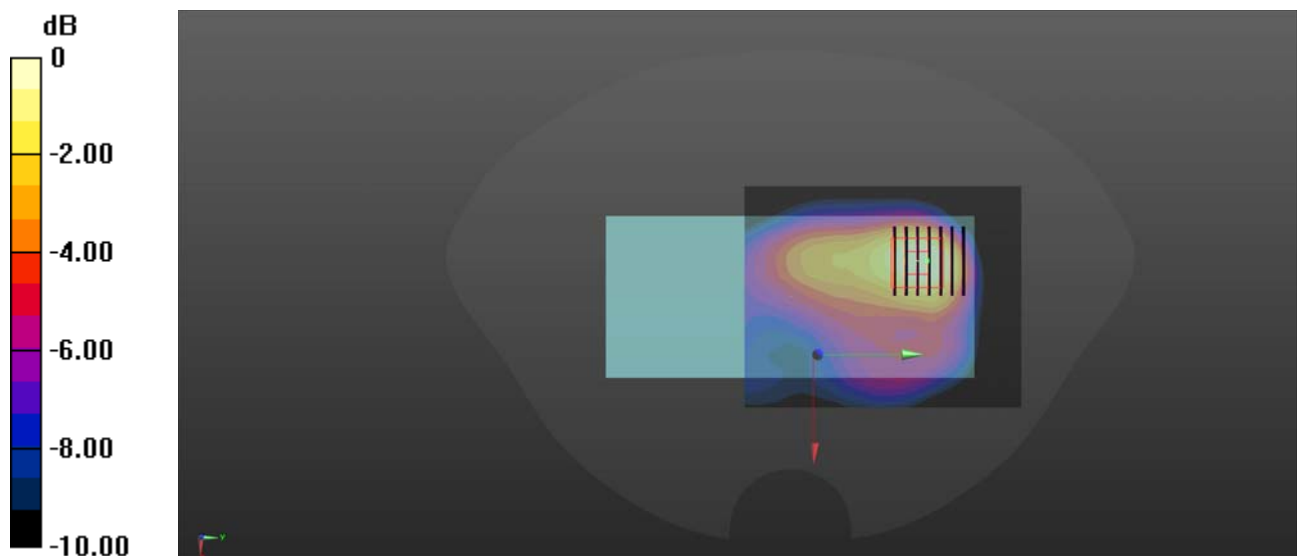
Communication System: UID 0, WLAN 2.4GHz 802.11b (0); Frequency: 2442 MHz; Duty Cycle: 1:1.012  
Medium: HSL\_2450 Medium parameters used:  $f = 2442$  MHz;  $\sigma = 1.808$  S/m;  $\epsilon_r = 38.829$ ;  $\rho = 1000$  kg/m<sup>3</sup>  
Ambient Temperature : 23.2 °C; Liquid Temperature : 22.1 °C

### DASY5 Configuration:

- Probe: EX3DV4 - SN7608; ConvF(7.42, 7.42, 7.42) @ 2450 MHz; Calibrated: 2022.01.12
- Sensor-Surface: 2mm (Mechanical Surface Detection)
- Electronics: DAE4 Sn1643; Calibrated: 2021.12.30
- Phantom: Twin-SAM; Type: QD 000 P41 Ax; Serial: 2020
- Measurement SW: DASY52, Version 52.10 (4); SEMCAD X Version 14.6.14 (7483)

**Ch7/Area Scan (81x101x1):** Interpolated grid: dx=1.200 mm, dy=1.200 mm  
Maximum value of SAR (interpolated) = 1.12 W/kg

**Ch7/Zoom Scan (7x7x7)/Cube 0:** Measurement grid: dx=5mm, dy=5mm, dz=5mm  
Reference Value = 11.80 V/m; Power Drift = -0.05 dB  
Peak SAR (extrapolated) = 1.31 W/kg  
**SAR(1 g) = 0.431 W/kg; SAR(10 g) = 0.329 W/kg**  
Maximum value of SAR (measured) = 0.995 W/kg



0 dB = 0.995 W/kg

## WLAN 5.2GHz\_802.11n-HT40 MCS0\_Back Side\_10mm\_Ch46

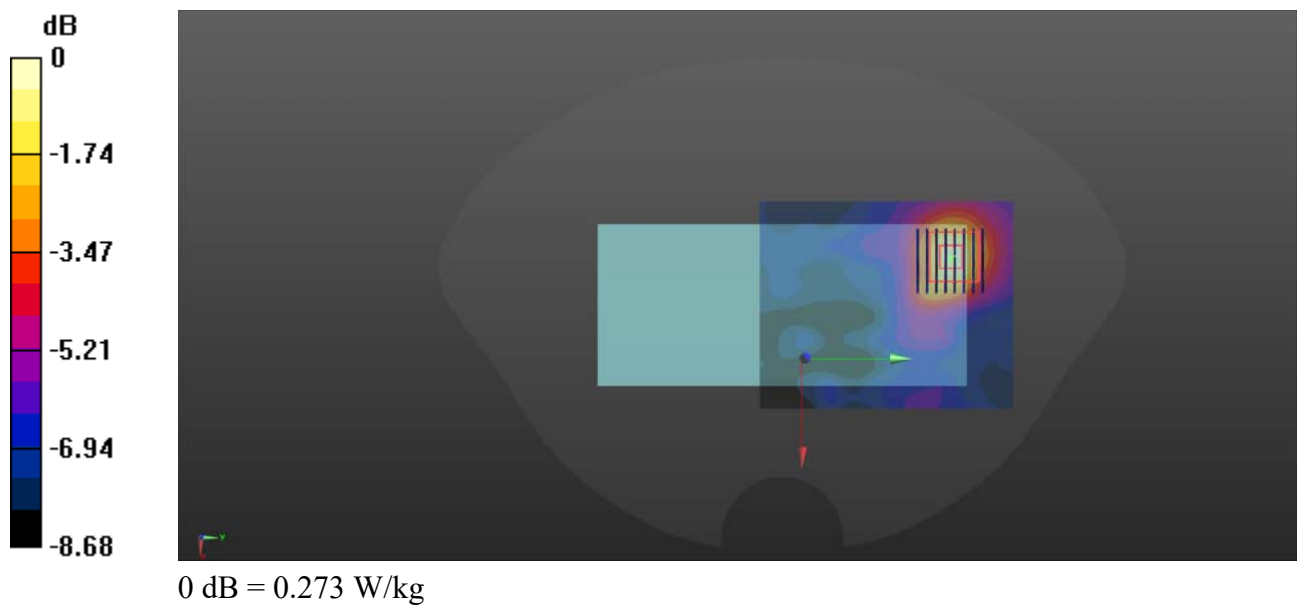
Communication System: UID 0, WLAN 5GHz (0); Frequency: 5230 MHz; Duty Cycle: 1:1.038  
Medium: HSL\_5250 Medium parameters used:  $f = 5230$  MHz;  $\sigma = 4.676$  S/m;  $\epsilon_r = 36.093$ ;  $\rho = 1000$  kg/m<sup>3</sup>  
Ambient Temperature : 23.2 °C; Liquid Temperature : 22.1 °C

### DASY5 Configuration:

- Probe: EX3DV4 - SN3753; ConvF(4.56, 4.56, 4.56) @ 5250 MHz; Calibrated: 2021.07.26
- Sensor-Surface: 2mm (Mechanical Surface Detection)
- Electronics: DAE4 Sn1643; Calibrated: 2021.12.30
- Phantom: Twin-SAM; Type: QD 000 P41 Ax; Serial: 2020
- Measurement SW: DASY52, Version 52.10 (4); SEMCAD X Version 14.6.14 (7483)

**Ch46/Area Scan (91x111x1):** Interpolated grid: dx=1.000 mm, dy=1.000 mm  
Maximum value of SAR (interpolated) = 0.296 W/kg

**Ch46/Zoom Scan (8x8x15)/Cube 0:** Measurement grid: dx=4mm, dy=4mm, dz=2mm  
Reference Value = 3.448 V/m; Power Drift = -0.04 dB  
Peak SAR (extrapolated) = 0.456 W/kg  
**SAR(1 g) = 0.170 W/kg; SAR(10 g) = 0.091 W/kg**  
Maximum value of SAR (measured) = 0.273 W/kg



## WLAN 5.8GHz\_802.11n-HT40 MCS0\_Back Side\_10mm\_Ch151

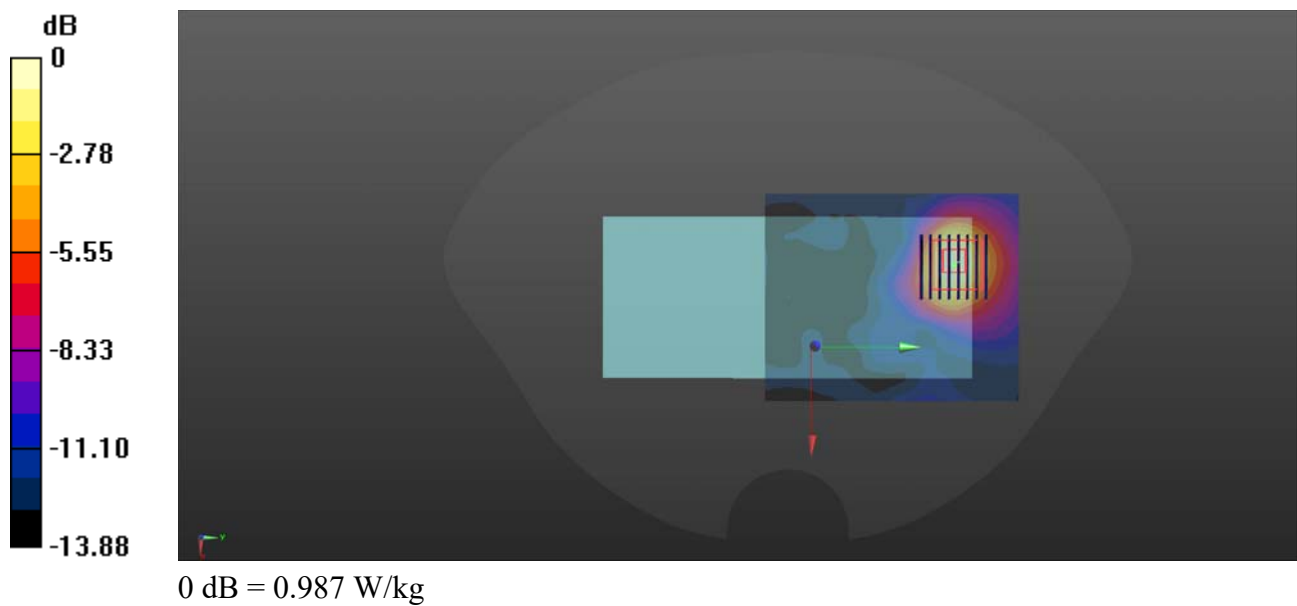
Communication System: UID 0, WLAN 5GHz (0); Frequency: 5755 MHz; Duty Cycle: 1:1.038  
Medium: HSL\_5750 Medium parameters used:  $f = 5755$  MHz;  $\sigma = 5.306$  S/m;  $\epsilon_r = 35.15$ ;  $\rho = 1000$  kg/m<sup>3</sup>  
Ambient Temperature : 23.2 °C; Liquid Temperature : 22.1 °C

### DASY5 Configuration:

- Probe: EX3DV4 - SN3753; ConvF(4.65, 4.65, 4.65) @ 5750 MHz; Calibrated: 2021.07.26
- Sensor-Surface: 2mm (Mechanical Surface Detection)
- Electronics: DAE4 Sn1643; Calibrated: 2021.12.30
- Phantom: Twin-SAM; Type: QD 000 P41 Ax; Serial: 2020
- Measurement SW: DASY52, Version 52.10 (4); SEMCAD X Version 14.6.14 (7483)

**Ch151/Area Scan (91x111x1):** Interpolated grid: dx=1.000 mm, dy=1.000 mm  
Maximum value of SAR (interpolated) = 1.03 W/kg

**Ch151/Zoom Scan (8x8x15)/Cube 0:** Measurement grid: dx=4mm, dy=4mm, dz=2mm  
Reference Value = 2.278 V/m; Power Drift = 0.01 dB  
Peak SAR (extrapolated) = 1.95 W/kg  
**SAR(1 g) = 0.548 W/kg; SAR(10 g) = 0.231 W/kg**  
Maximum value of SAR (measured) = 0.987 W/kg



## Bluetooth\_DH5\_Back Side\_10mm\_Ch0

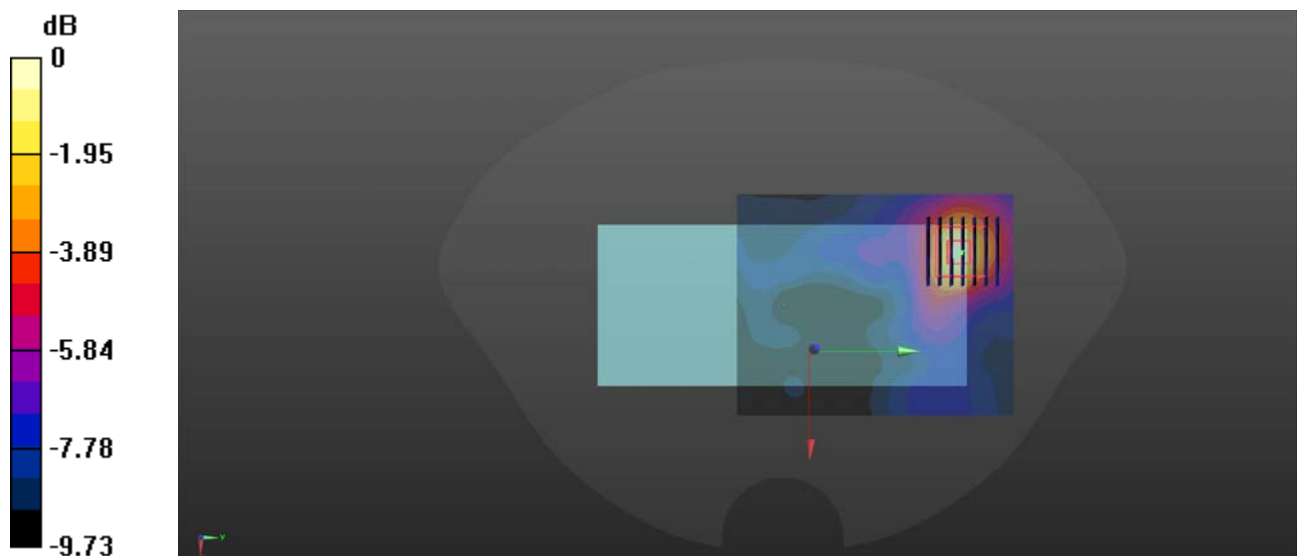
Communication System: UID 0, Bluetooth (0); Frequency: 2402 MHz; Duty Cycle: 1:1.079  
Medium: HSL\_2450 Medium parameters used:  $f = 2402$  MHz;  $\sigma = 1.749$  S/m;  $\epsilon_r = 38.922$ ;  $\rho = 1000$  kg/m<sup>3</sup>  
Ambient Temperature : 23.2 °C; Liquid Temperature : 22.1 °C

### DASY5 Configuration:

- Probe: EX3DV4 - SN7608; ConvF(7.42, 7.42, 7.42) @ 2450 MHz; Calibrated: 2022.01.12
- Sensor-Surface: 2mm (Mechanical Surface Detection)
- Electronics: DAE4 Sn1643; Calibrated: 2021.12.30
- Phantom: Twin-SAM; Type: QD 000 P41 Ax; Serial: 2020
- Measurement SW: DASY52, Version 52.10 (4); SEMCAD X Version 14.6.14 (7483)

**Ch0/Area Scan (81x101x1):** Interpolated grid: dx=1.200 mm, dy=1.200 mm  
Maximum value of SAR (interpolated) = 0.0995 W/kg

**Ch0/Zoom Scan (7x7x7)/Cube 0:** Measurement grid: dx=5mm, dy=5mm, dz=5mm  
Reference Value = 2.139 V/m; Power Drift = 0.08 dB  
Peak SAR (extrapolated) = 0.227 W/kg  
**SAR(1 g) = 0.059 W/kg; SAR(10 g) = 0.029 W/kg**  
Maximum value of SAR (measured) = 0.0970 W/kg



0 dB = 0.0970 W/kg