

# APPENDIX A: VERIFICATION PLOTS

# PCTEST

Date: 10/18/2021

30 GHz System Verification

## Device Under Test Properties

DUT	Serial Number
30 GHz Verification Source	1045

## Exposure Conditions

Phantom Section	Position	Test Distance [mm]	Band	Frequency [MHz]
5G	FRONT	5.55	Validation band	30000.0

## Hardware Setup

Probe, Calibration Date	DAE, Calibration Date
EUmmWV4 - SN9541_F1-55GHz, 2021-05-20	DAE4 Sn665, 2021-02-12

## Software Setup

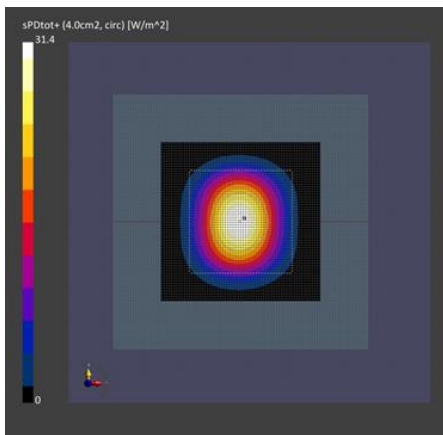
Software	Software Version
cDASY6 Module mmWave	2.4.2.62

## Scans Setup

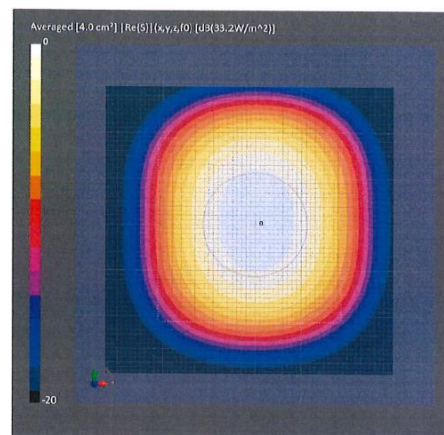
Scan Type	5G Scan
Grid Extents [mm]	60.0 x 60.0
Grid Steps [lambda]	0.25 x 0.25
Sensor Surface [mm]	5.55

## Measurement Results

Scan Type	5G Scan
Avg. Area [cm <sup>2</sup> ]	4.00
pS <sub>tot</sub> avg [W/m <sup>2</sup> ]	31.4
pS <sub>n</sub> avg [W/m <sup>2</sup> ]	31.0
E <sub>peak</sub> [V/m]	127
Deviation (dB)	-0.24



30GHz System Verification



Calibration Certificate

# PCTEST

Date: 10/21/2021

30 GHz System Verification

## Device Under Test Properties

DUT	Serial Number
30 GHz Verification Source	1045

## Exposure Conditions

Phantom Section	Position	Test Distance [mm]	Band	Frequency [MHz]
5G	FRONT	5.55	Validation band	30000.0

## Hardware Setup

Probe, Calibration Date	DAE, Calibration Date
EUmmWV4 - SN9541_F1-55GHz, 2021-05-20	DAE4 Sn665, 2021-02-12

## Software Setup

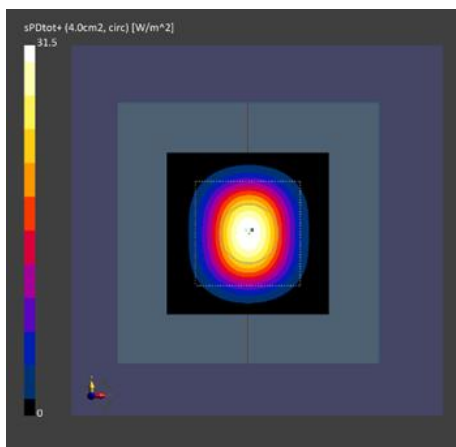
Software	Software Version
cDASY6 Module mmWave	2.4.2.62

## Scans Setup

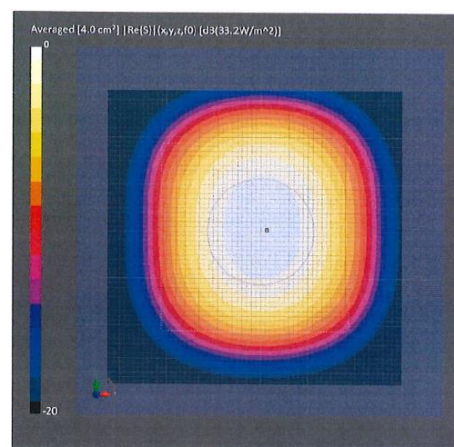
Scan Type	5G Scan
Grid Extents [mm]	60.0 x 60.0
Grid Steps [lambda]	0.25 x 0.25
Sensor Surface [mm]	5.55

## Measurement Results

Scan Type	5G Scan
Avg. Area [cm <sup>2</sup> ]	4.00
pS <sub>tot</sub> avg [W/m <sup>2</sup> ]	31.5
pS <sub>n</sub> avg [W/m <sup>2</sup> ]	31.0
E <sub>peak</sub> [V/m]	127
Deviation (dB)	-0.23



30GHz System Verification



Calibration Certificate