



REPORT No . : SZ22070205S01

## Annex D Plots of Maximum SAR Test Results

## GSM850\_GPRS(4 TX slots)\_Right Tilt\_Ch251\_Ant 2

Communication System: UID 0, GSM850(class 12) (0); Frequency: 848.8 MHz; Duty Cycle: 1:2.08  
Medium: HSL\_835 Medium parameters used:  $f = 849$  MHz;  $\sigma = 0.964$  S/m;  $\epsilon_r = 42.971$ ;  $\rho = 1000$  kg/m<sup>3</sup>

Ambient Temperature : 23.2 °C; Liquid Temperature : 22.3 °C

### DASY5 Configuration:

- Probe: EX3DV4 - SN7608; ConvF(9.57, 9.57, 9.57) @ 848.8 MHz; Calibrated: 2020.11.27
- Sensor-Surface: 2mm (Mechanical Surface Detection)
- Electronics: DAE4 Sn1643; Calibrated: 2020.11.30
- Phantom: Twin-SAM; Type: QD 000 P41 Ax; Serial: 2020
- Measurement SW: DASY52, Version 52.10 (4); SEMCAD X Version 14.6.14 (7483)

**Ch251/Area Scan (71x81x1):** Interpolated grid: dx=1.500 mm, dy=1.500 mm

Maximum value of SAR (interpolated) = 0.294 W/kg

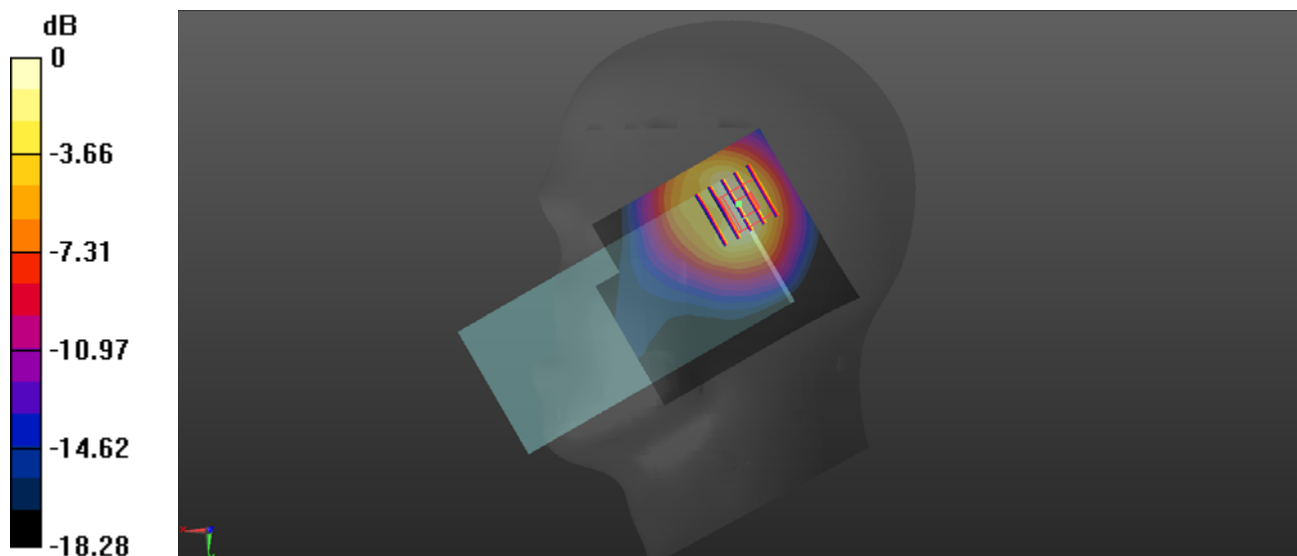
**Ch251/Zoom Scan (5x5x7)/Cube 0:** Measurement grid: dx=8mm, dy=8mm, dz=5mm

Reference Value = 12.53 V/m; Power Drift = -0.03 dB

Peak SAR (extrapolated) = 0.399 W/kg

**SAR(1 g) = 0.222 W/kg; SAR(10 g) = 0.091 W/kg**

Maximum value of SAR (measured) = 0.266 W/kg



0 dB = 0.266 W/kg

### GSM1900\_GPRS(4 TX slots)\_Right Tilt\_Ch661\_Ant 3

Communication System: UID 0, GSM1900(class 12) (0); Frequency: 1880 MHz; Duty Cycle: 1:2.08  
Medium: HSL\_1900 Medium parameters used:  $f = 1880$  MHz;  $\sigma = 1.321$  S/m;  $\epsilon_r = 39.882$ ;  $\rho = 1000$  kg/m<sup>3</sup>

Ambient Temperature : 23.2 °C; Liquid Temperature : 22.1 °C

#### DASY5 Configuration:

- Probe: EX3DV4 - SN7608; ConvF(8.04, 8.04, 8.04) @ 1880 MHz; Calibrated: 2020.11.27
- Sensor-Surface: 2mm (Mechanical Surface Detection)
- Electronics: DAE4 Sn1643; Calibrated: 2020.11.30
- Phantom: Twin-SAM; Type: QD 000 P41 Ax; Serial: 2020
- Measurement SW: DASY52, Version 52.10 (4); SEMCAD X Version 14.6.14 (7483)

**Ch661/Area Scan (71x81x1):** Interpolated grid: dx=1.500 mm, dy=1.500 mm

Maximum value of SAR (interpolated) = 0.837 W/kg

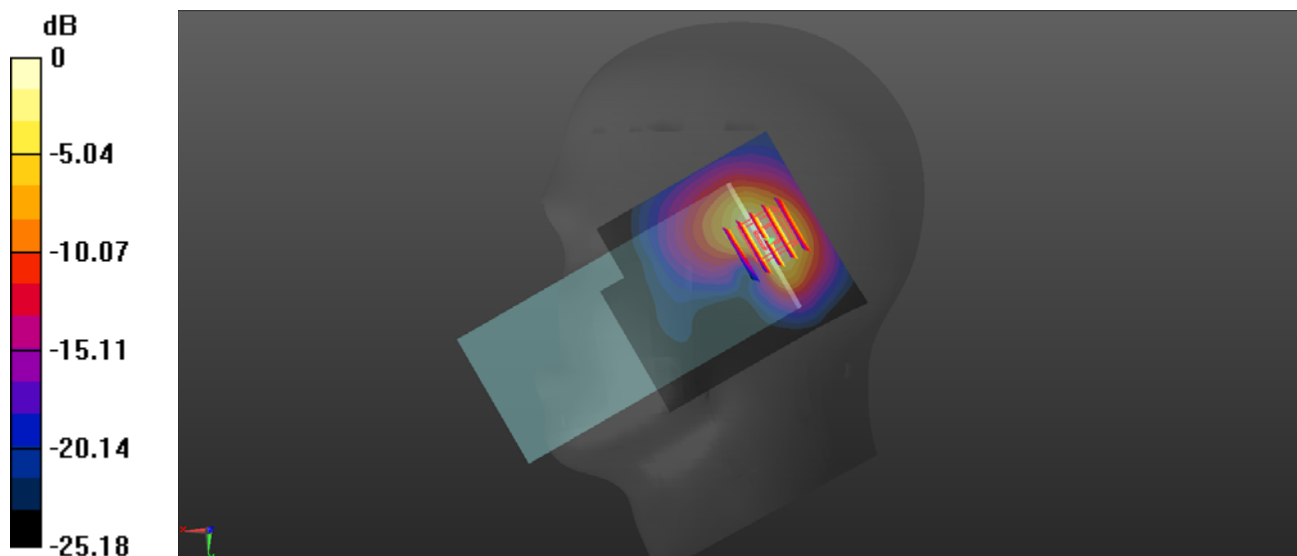
**Ch661/Zoom Scan (5x5x7)/Cube 0:** Measurement grid: dx=8mm, dy=8mm, dz=5mm

Reference Value = 15.58 V/m; Power Drift = -0.02 dB

Peak SAR (extrapolated) = 1.05 W/kg

**SAR(1 g) = 0.516 W/kg; SAR(10 g) = 0.247 W/kg**

Maximum value of SAR (measured) = 0.781 W/kg



0 dB = 0.781 W/kg

## WCDMA Band II\_RMC 12.2Kbps\_Right Tilt\_Ch9400\_Ant 3

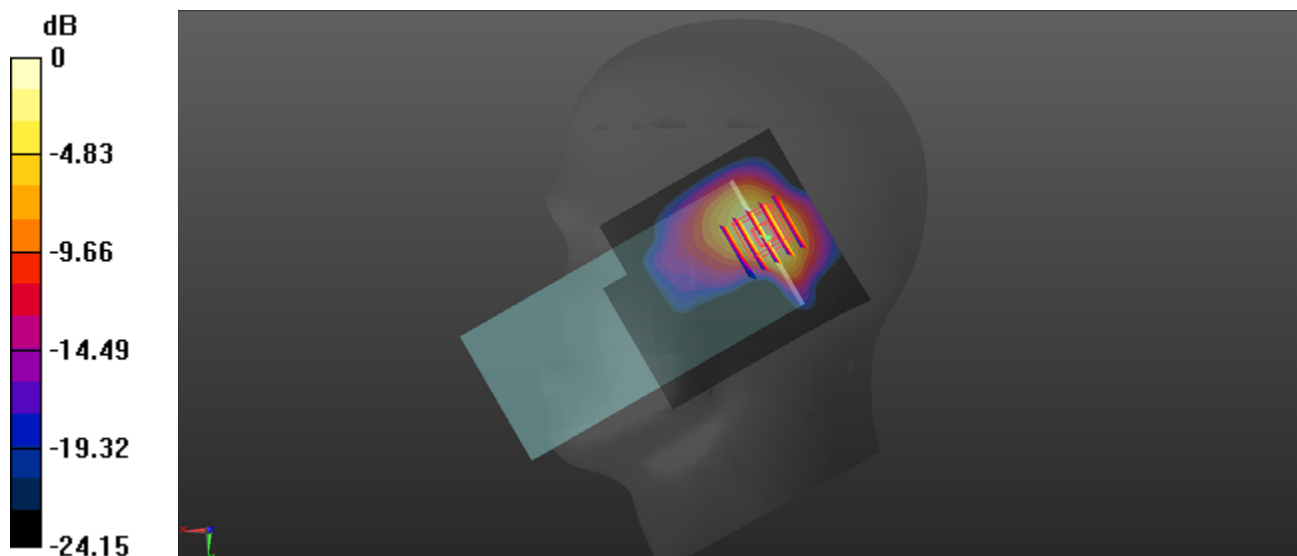
Communication System: UID 0, UMTS-FDD (0); Frequency: 1880 MHz; Duty Cycle: 1:1  
Medium: HSL\_1900 Medium parameters used:  $f = 1880$  MHz;  $\sigma = 1.321$  S/m;  $\epsilon_r = 39.882$ ;  $\rho = 1000$  kg/m<sup>3</sup>  
Ambient Temperature : 23.2 °C; Liquid Temperature : 22.1 °C

### DASY5 Configuration:

- Probe: EX3DV4 - SN7608; ConvF(8.04, 8.04, 8.04) @ 1880 MHz; Calibrated: 2020.11.27
- Sensor-Surface: 2mm (Mechanical Surface Detection)
- Electronics: DAE4 Sn1643; Calibrated: 2020.11.30
- Phantom: Twin-SAM; Type: QD 000 P41 Ax; Serial: 2020
- Measurement SW: DASY52, Version 52.10 (4); SEMCAD X Version 14.6.14 (7483)

**Ch9400/Area Scan (71x81x1):** Interpolated grid: dx=1.500 mm, dy=1.500 mm  
Maximum value of SAR (interpolated) = 0.432 W/kg

**Ch9400/Zoom Scan (5x5x7)/Cube 0:** Measurement grid: dx=8mm, dy=8mm, dz=5mm  
Reference Value = 12.34 V/m; Power Drift = 0.07 dB  
Peak SAR (extrapolated) = 0.568 W/kg  
**SAR(1 g) = 0.277 W/kg; SAR(10 g) = 0.134 W/kg**  
Maximum value of SAR (measured) = 0.425 W/kg



0 dB = 0.425 W/kg

### WCDMA Band IV\_RMC 12.2Kbps\_Right Tilt\_Ch1413\_Ant 3

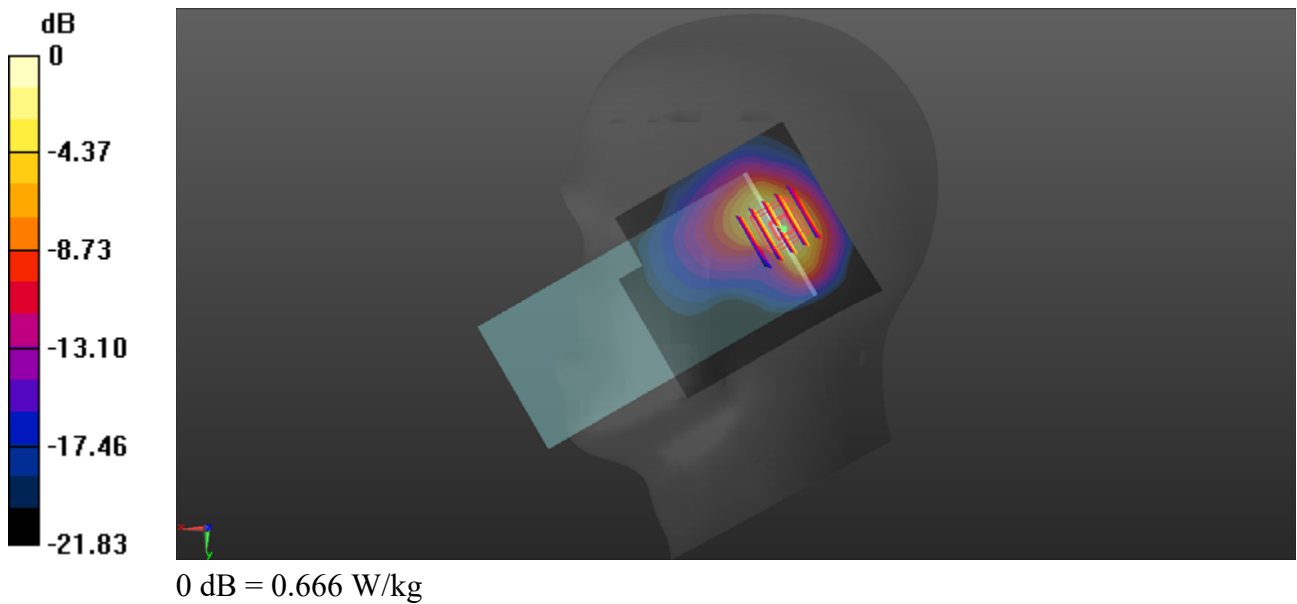
Communication System: UID 0, UMTS-FDD (0); Frequency: 1732.6 MHz; Duty Cycle: 1:1  
Medium: HSL\_1750 Medium parameters used:  $f = 1733$  MHz;  $\sigma = 1.412$  S/m;  $\epsilon_r = 39.814$ ;  $\rho = 1000$  kg/m<sup>3</sup>  
Ambient Temperature : 23.2 °C; Liquid Temperature : 22.1 °C

#### DASY5 Configuration:

- Probe: EX3DV4 - SN7608; ConvF(8.32, 8.32, 8.32) @ 1732.6 MHz; Calibrated: 2020.11.27
- Sensor-Surface: 2mm (Mechanical Surface Detection)
- Electronics: DAE4 Sn1643; Calibrated: 2020.11.30
- Phantom: Twin-SAM; Type: QD 000 P41 Ax; Serial: 2020
- Measurement SW: DASY52, Version 52.10 (4); SEMCAD X Version 14.6.14 (7483)

**Ch1413/Area Scan (71x81x1):** Interpolated grid: dx=1.500 mm, dy=1.500 mm  
Maximum value of SAR (interpolated) = 0.664 W/kg

**Ch1413/Zoom Scan (5x5x7)/Cube 0:** Measurement grid: dx=8mm, dy=8mm, dz=5mm  
Reference Value = 15.46 V/m; Power Drift = -0.04 dB  
Peak SAR (extrapolated) = 0.854 W/kg  
**SAR(1 g) = 0.444 W/kg; SAR(10 g) = 0.221 W/kg**  
Maximum value of SAR (measured) = 0.666 W/kg



## WCDMA Band V\_RMC 12.2Kbps\_Right Cheek\_Ch4233\_Ant 2

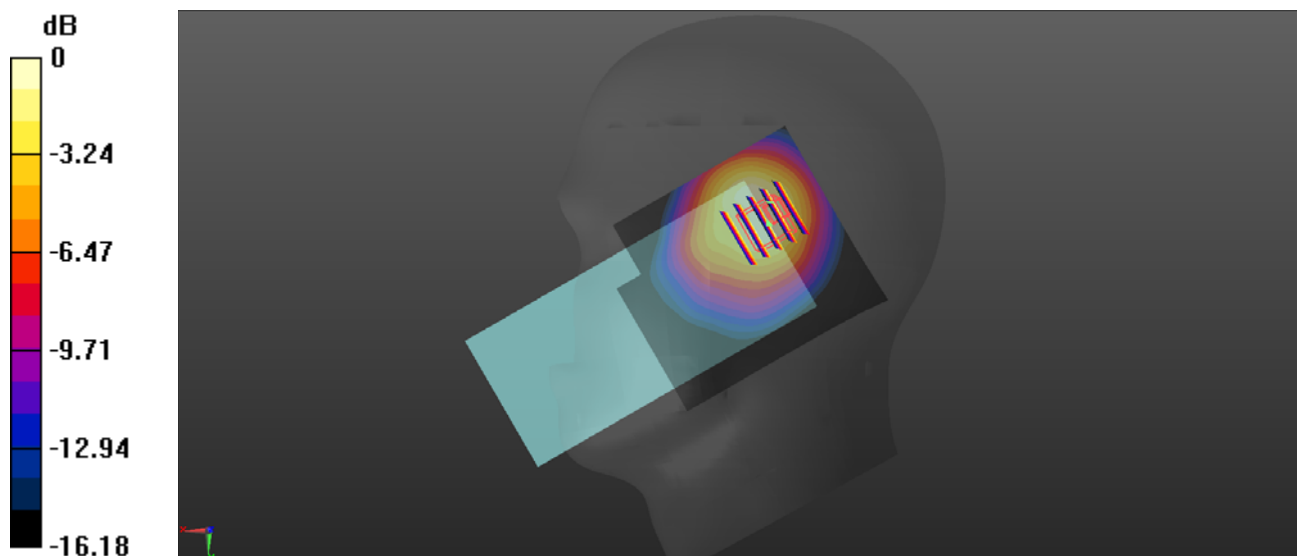
Communication System: UID 0, UMTS-FDD (0); Frequency: 846.6 MHz; Duty Cycle: 1:1  
Medium: HSL\_835 Medium parameters used:  $f = 847$  MHz;  $\sigma = 0.959$  S/m;  $\epsilon_r = 43.168$ ;  $\rho = 1000$  kg/m<sup>3</sup>  
Ambient Temperature : 23.2 °C; Liquid Temperature : 22.3 °C

### DASY5 Configuration:

- Probe: EX3DV4 - SN7608; ConvF(9.57, 9.57, 9.57) @ 846.6 MHz; Calibrated: 2020.11.27
- Sensor-Surface: 2mm (Mechanical Surface Detection)
- Electronics: DAE4 Sn1643; Calibrated: 2020.11.30
- Phantom: Twin-SAM; Type: QD 000 P41 Ax; Serial: 2020
- Measurement SW: DASY52, Version 52.10 (4); SEMCAD X Version 14.6.14 (7483)

**Ch4233/Area Scan (71x81x1):** Interpolated grid: dx=1.500 mm, dy=1.500 mm  
Maximum value of SAR (interpolated) = 0.619 W/kg

**Ch4233/Zoom Scan (5x5x7)/Cube 0:** Measurement grid: dx=8mm, dy=8mm, dz=5mm  
Reference Value = 18.98 V/m; Power Drift = -0.01 dB  
Peak SAR (extrapolated) = 0.819 W/kg  
**SAR(1 g) = 0.373 W/kg; SAR(10 g) = 0.203 W/kg**  
Maximum value of SAR (measured) = 0.587 W/kg



0 dB = 0.587 W/kg

## LTE Band 2\_20MHz\_QPSK\_1RB\_0Offset\_Right Tilt\_Ch18900\_Ant 3

Communication System: UID 0, LTE (0); Frequency: 1880 MHz; Duty Cycle: 1:1

Medium: HSL\_1900 Medium parameters used:  $f = 1880$  MHz;  $\sigma = 1.321$  S/m;  $\epsilon_r = 39.882$ ;  $\rho = 1000$  kg/m<sup>3</sup>

Ambient Temperature : 23.2 °C; Liquid Temperature : 22.1 °C

DASY5 Configuration:

- Probe: EX3DV4 - SN7608; ConvF(8.04, 8.04, 8.04) @ 1880 MHz; Calibrated: 2020.11.27
- Sensor-Surface: 2mm (Mechanical Surface Detection)
- Electronics: DAE4 Sn1643; Calibrated: 2020.11.30
- Phantom: Twin-SAM; Type: QD 000 P41 Ax; Serial: 2020
- Measurement SW: DASY52, Version 52.10 (4); SEMCAD X Version 14.6.14 (7483)

**Ch18900/Area Scan (71x81x1):** Interpolated grid: dx=1.500 mm, dy=1.500 mm

Maximum value of SAR (interpolated) = 0.416 W/kg

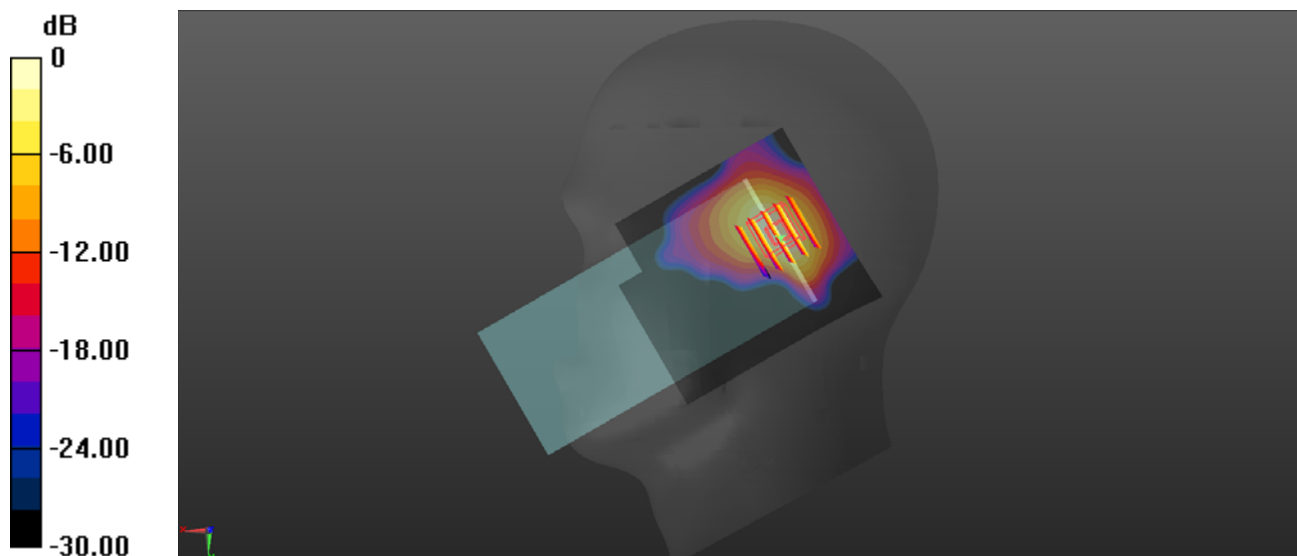
**Ch18900/Zoom Scan (5x5x7)/Cube 0:** Measurement grid: dx=8mm, dy=8mm, dz=5mm

Reference Value = 12.86 V/m; Power Drift = -0.03 dB

Peak SAR (extrapolated) = 0.535 W/kg

**SAR(1 g) = 0.267 W/kg; SAR(10 g) = 0.130 W/kg**

Maximum value of SAR (measured) = 0.399 W/kg



0 dB = 0.399 W/kg

## LTE Band 5\_10MHz\_QPSK\_1RB\_0Offset\_Right Cheek\_Ch20525\_Ant 2

Communication System: UID 0, LTE (0); Frequency: 836.5 MHz; Duty Cycle: 1:1

Medium: HSL\_835 Medium parameters used:  $f = 836.5$  MHz;  $\sigma = 0.943$  S/m;  $\epsilon_r = 42.967$ ;  $\rho = 1000$  kg/m<sup>3</sup>

Ambient Temperature : 23.2 °C; Liquid Temperature : 22.3 °C

DASY5 Configuration:

- Probe: EX3DV4 - SN7608; ConvF(9.57, 9.57, 9.57) @ 836.5 MHz; Calibrated: 2020.11.27
- Sensor-Surface: 2mm (Mechanical Surface Detection)
- Electronics: DAE4 Sn1643; Calibrated: 2020.11.30
- Phantom: Twin-SAM; Type: QD 000 P41 Ax; Serial: 2020
- Measurement SW: DASY52, Version 52.10 (4); SEMCAD X Version 14.6.14 (7483)

**Ch20525/Area Scan (71x81x1):** Interpolated grid: dx=1.500 mm, dy=1.500 mm

Maximum value of SAR (interpolated) = 0.539 W/kg

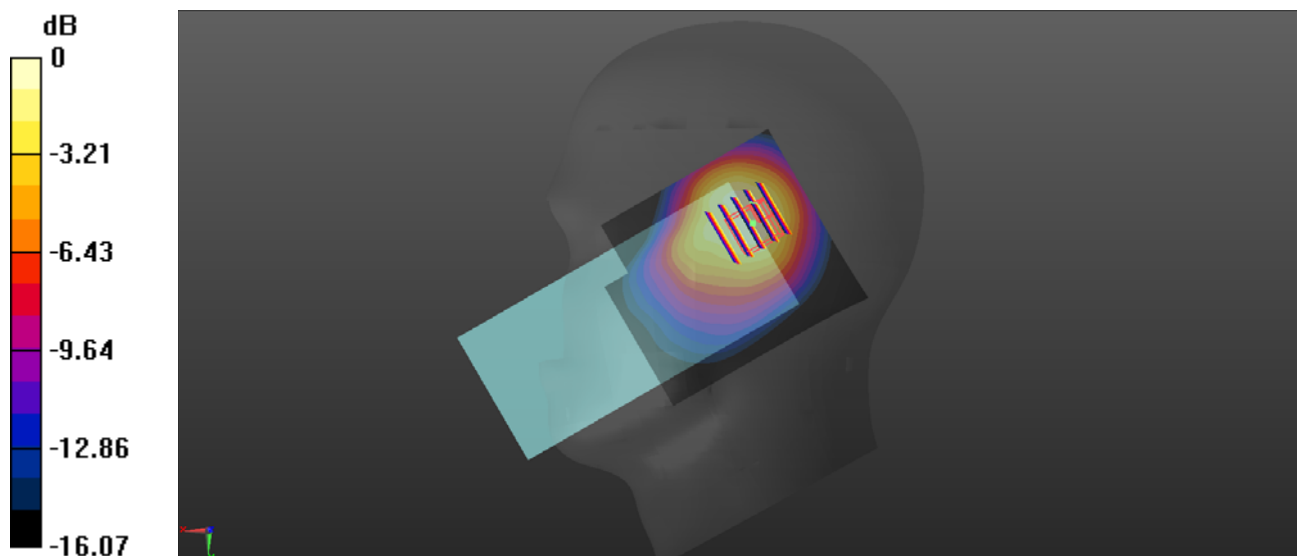
**Ch20525/Zoom Scan (5x5x7)/Cube 0:** Measurement grid: dx=8mm, dy=8mm, dz=5mm

Reference Value = 19.29 V/m; Power Drift = -0.05 dB

Peak SAR (extrapolated) = 0.748 W/kg

**SAR(1 g) = 0.345 W/kg; SAR(10 g) = 0.184 W/kg**

Maximum value of SAR (measured) = 0.538 W/kg



0 dB = 0.538 W/kg



### LTE Band 5B\_10MHz\_QPSK\_1RB\_0Offset\_Right Cheek\_Ch20525\_Ant 2

Communication System: UID 0, LTE (0); Frequency: 836.5 MHz; Duty Cycle: 1:1

Medium: HSL\_900 Medium parameters used:  $f = 836.5$  MHz;  $\sigma = 0.943$  S/m;  $\epsilon_r = 42.967$ ;  $\rho = 1000$  kg/m<sup>3</sup>

Ambient Temperature : 23.2 °C; Liquid Temperature : 22.3 °C

#### DASY5 Configuration:

- Probe: EX3DV4 - SN7608; ConvF(9.57, 9.57, 9.57) @ 836.5 MHz; Calibrated: 2020.11.27;
- Sensor-Surface: 2mm (Mechanical Surface Detection)
- Electronics: DAE4 Sn1643; Calibrated: 2020.11.30
- Phantom: Twin-SAM; Type: QD 000 P41 Ax; Serial: 2020
- Measurement SW: DASY52, Version 52.8 (8); SEMCAD X Version 14.6.10 (7331)

**Ch20525/Area Scan (81x91x1):** Interpolated grid: dx=1.500 mm, dy=1.500 mm

Maximum value of SAR (interpolated) = 0.430 W/kg

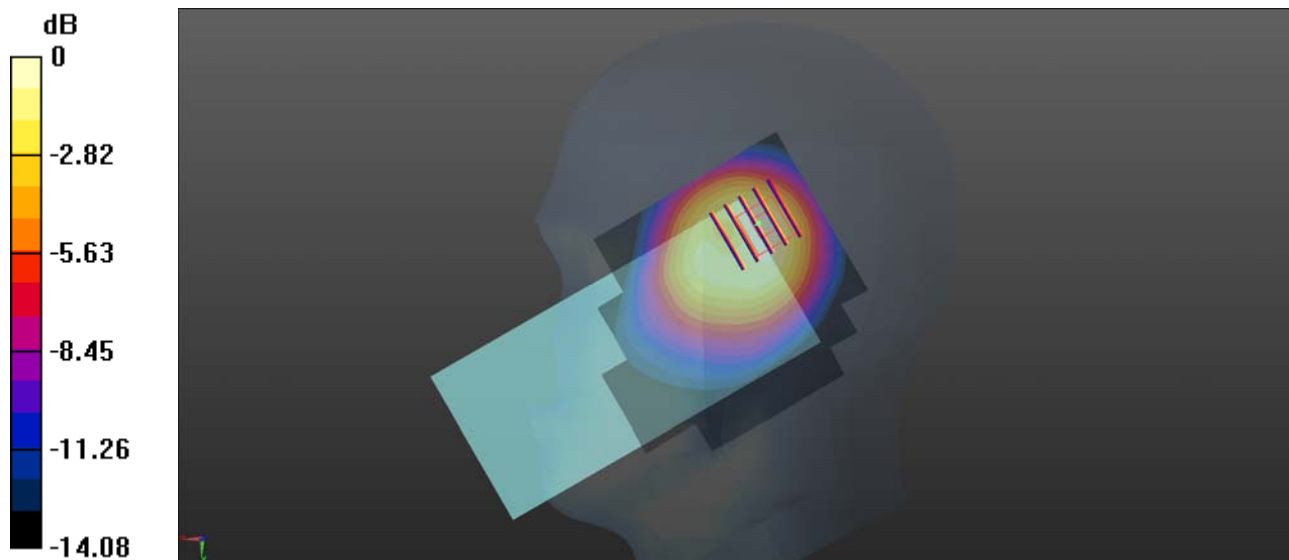
**Ch20525/Zoom Scan (5x5x7)/Cube 0:** Measurement grid: dx=8mm, dy=8mm, dz=5mm

Reference Value = 19.79 V/m; Power Drift = -0.04 dB

Peak SAR (extrapolated) = 0.850 W/kg

**SAR(1 g) = 0.266 W/kg; SAR(10 g) = 0.148 W/kg**

Maximum value of SAR (measured) = 0.422 W/kg



0 dB = 0.422 W/kg

## LTE Band 12\_10MHz\_QPSK\_1RB\_0Offset\_Right Cheek\_Ch23060\_Ant 2

Communication System: UID 0, LTE (0); Frequency: 704 MHz; Duty Cycle: 1:1

Medium: HSL\_750 Medium parameters used:  $f = 704$  MHz;  $\sigma = 0.917$  S/m;  $\epsilon_r = 42.279$ ;  $\rho = 1000$  kg/m<sup>3</sup>

Ambient Temperature : 23.2 °C; Liquid Temperature : 22.3 °C

DASY5 Configuration:

- Probe: EX3DV4 - SN7608; ConvF(9.76, 9.76, 9.76) @ 704 MHz; Calibrated: 2020.11.27
- Sensor-Surface: 2mm (Mechanical Surface Detection)
- Electronics: DAE4 Sn1643; Calibrated: 2020.11.30
- Phantom: Twin-SAM; Type: QD 000 P41 Ax; Serial: 2020
- Measurement SW: DASY52, Version 52.10 (4); SEMCAD X Version 14.6.14 (7483)

**Ch23060/Area Scan (71x81x1):** Interpolated grid: dx=1.500 mm, dy=1.500 mm

Maximum value of SAR (interpolated) = 0.285 W/kg

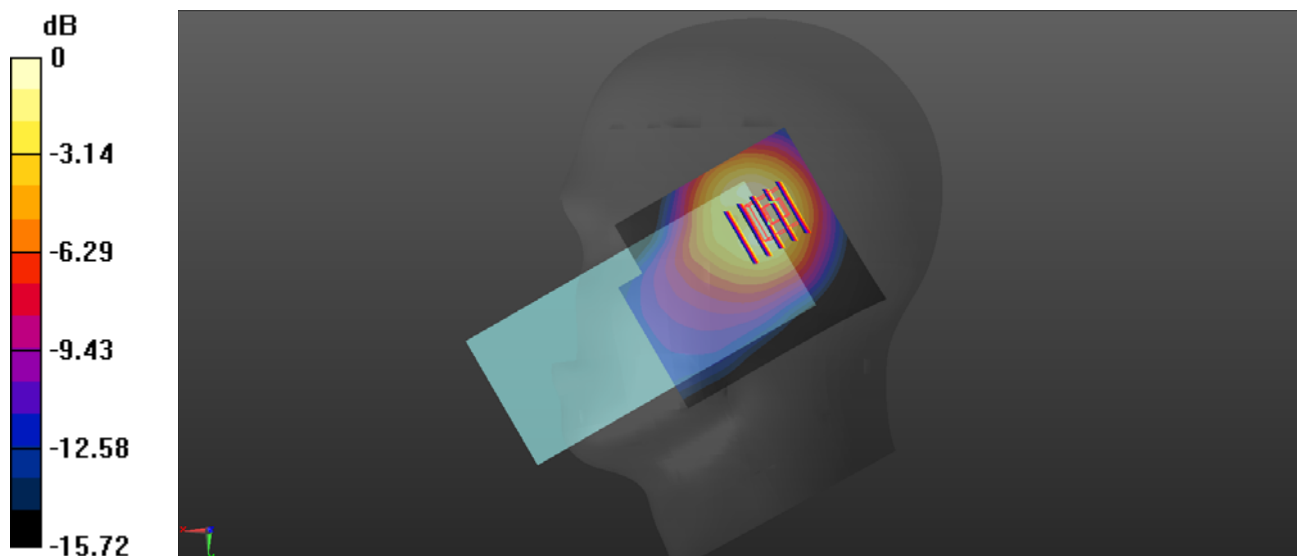
**Ch23060/Zoom Scan (5x5x7)/Cube 0:** Measurement grid: dx=8mm, dy=8mm, dz=5mm

Reference Value = 13.82 V/m; Power Drift = -0.06 dB

Peak SAR (extrapolated) = 0.383 W/kg

**SAR(1 g) = 0.190 W/kg; SAR(10 g) = 0.103 W/kg**

Maximum value of SAR (measured) = 0.275 W/kg



0 dB = 0.275 W/kg

## LTE Band 13\_10MHz\_QPSK\_1RB\_25Offset\_Right Tilt\_Ch23230\_Ant 2

Communication System: UID 0, LTE (0); Frequency: 782 MHz; Duty Cycle: 1:1

Medium: HSL\_750 Medium parameters used:  $f = 782$  MHz;  $\sigma = 0.885$  S/m;  $\epsilon_r = 43.316$ ;  $\rho = 1000$  kg/m<sup>3</sup>

Ambient Temperature : 23.2 °C; Liquid Temperature : 22.3 °C

DASY5 Configuration:

- Probe: EX3DV4 - SN7608; ConvF(9.76, 9.76, 9.76) @ 782 MHz; Calibrated: 2020.11.27
- Sensor-Surface: 2mm (Mechanical Surface Detection)
- Electronics: DAE4 Sn1643; Calibrated: 2020.11.30
- Phantom: Twin-SAM; Type: QD 000 P41 Ax; Serial: 2020
- Measurement SW: DASY52, Version 52.10 (4); SEMCAD X Version 14.6.14 (7483)

**Ch23230/Area Scan (71x81x1):** Interpolated grid: dx=1.500 mm, dy=1.500 mm

Maximum value of SAR (interpolated) = 0.344 W/kg

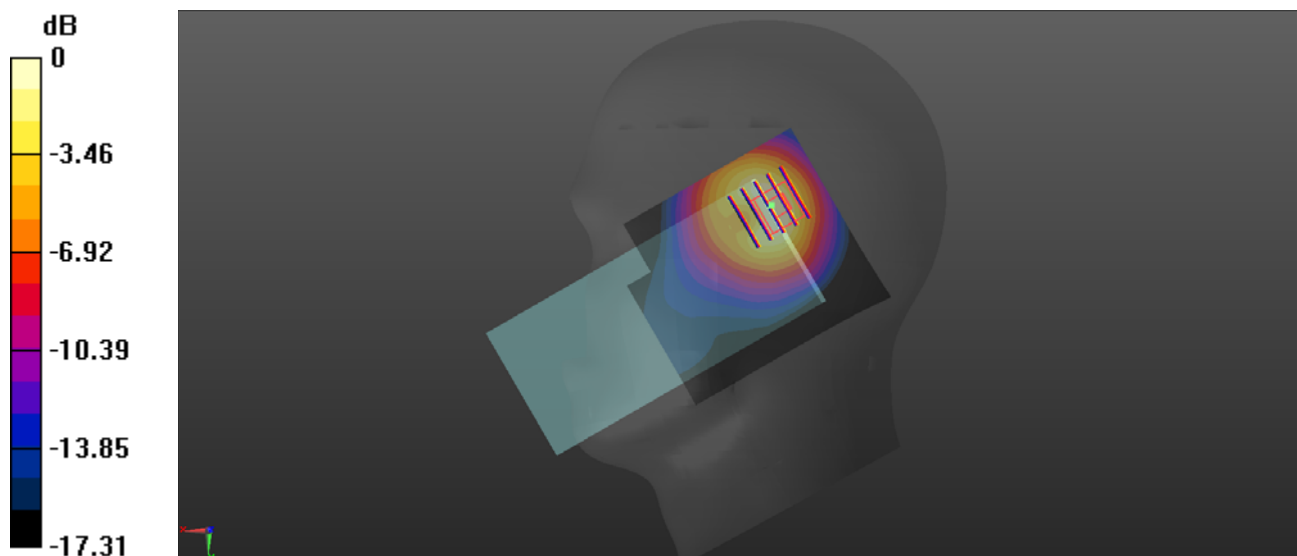
**Ch23230/Zoom Scan (5x5x7)/Cube 0:** Measurement grid: dx=8mm, dy=8mm, dz=5mm

Reference Value = 13.73 V/m; Power Drift = -0.09 dB

Peak SAR (extrapolated) = 0.489 W/kg

**SAR(1 g) = 0.229 W/kg; SAR(10 g) = 0.116 W/kg**

Maximum value of SAR (measured) = 0.337 W/kg



0 dB = 0.337 W/kg

### LTE Band 66\_20MHz\_QPSK\_1RB\_0Offset\_Right Tilt\_Ch132322\_Ant 3

Communication System: UID 0, LTE (0); Frequency: 1745 MHz; Duty Cycle: 1:1

Medium: HSL\_1750 Medium parameters used:  $f = 1745$  MHz;  $\sigma = 1.438$  S/m;  $\epsilon_r = 39.567$ ;  $\rho = 1000$  kg/m<sup>3</sup>

Ambient Temperature : 23.2 °C; Liquid Temperature : 22.1 °C

DASY5 Configuration:

- Probe: EX3DV4 - SN7608; ConvF(8.32, 8.32, 8.32) @ 1745 MHz; Calibrated: 2020.11.27
- Sensor-Surface: 2mm (Mechanical Surface Detection)
- Electronics: DAE4 Sn1643; Calibrated: 2020.11.30
- Phantom: Twin-SAM; Type: QD 000 P41 Ax; Serial: 2020
- Measurement SW: DASY52, Version 52.10 (4); SEMCAD X Version 14.6.14 (7483)

**Ch132322/Area Scan (71x81x1):** Interpolated grid: dx=1.500 mm, dy=1.500 mm

Maximum value of SAR (interpolated) = 0.527 W/kg

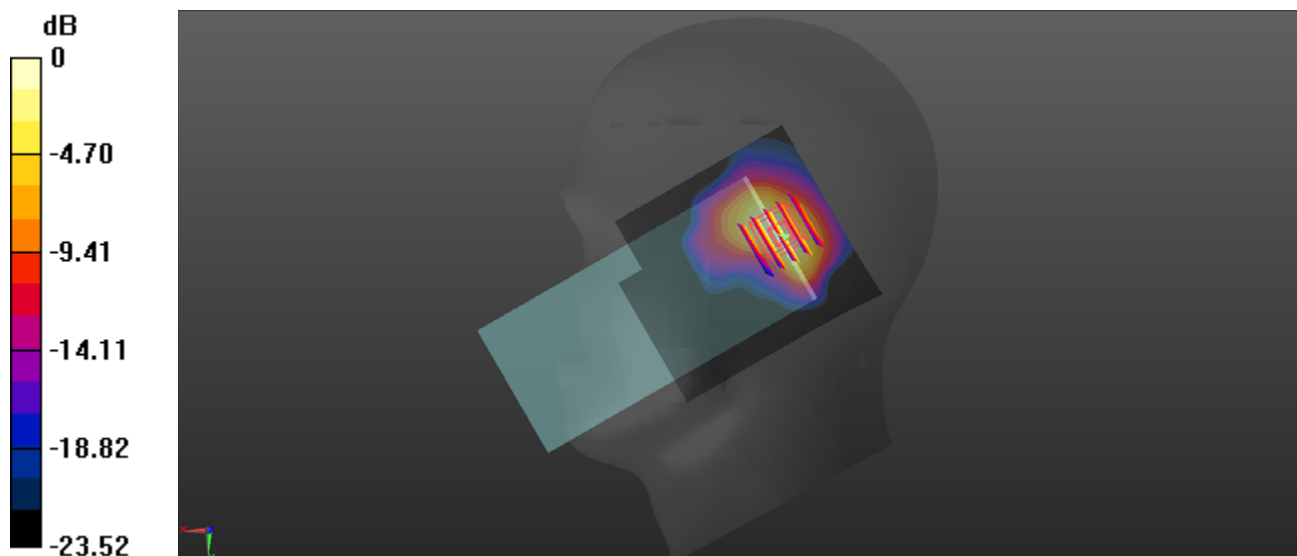
**Ch132322/Zoom Scan (5x5x7)/Cube 0:** Measurement grid: dx=8mm, dy=8mm, dz=5mm

Reference Value = 14.31 V/m; Power Drift = -0.07 dB

Peak SAR (extrapolated) = 0.679 W/kg

**SAR(1 g) = 0.350 W/kg; SAR(10 g) = 0.173 W/kg**

Maximum value of SAR (measured) = 0.509 W/kg



0 dB = 0.509 W/kg

### LTE Band 66E\_20MHz\_QPSK\_1RB\_0Offset\_Right Tilt\_Ch132294\_Ant 3

Communication System: UID 0, LTE (0); Frequency: 1742 MHz; Duty Cycle: 1:1

Medium: HSL\_1750 Medium parameters used:  $f = 1742$  MHz;  $\sigma = 1.5$ ;  $6$  S/m;  $\epsilon_r = 39$ ;  $8$ ;  $\rho = 1000$  kg/m<sup>3</sup>

Ambient Temperature : 23.2 °C; Liquid Temperature : 22.1 °C

DASY5 Configuration:

- Probe: EX3DV4 - SN7608; ConvF(8.32, 8.32, 8.32) @ 1720 MHz; Calibrated: 2020.11.27
- Sensor-Surface: 2mm (Mechanical Surface Detection)
- Electronics: DAE4 Sn1643; Calibrated: 2020.11.30
- Phantom: Twin-SAM; Type: QD 000 P41 Ax; Serial: 2020
- Measurement SW: DASY52, Version 52.10 (4); SEMCAD X Version 14.6.14 (7483)

**Ch132072/Area Scan (71x81x1):** Interpolated grid: dx=1.500 mm, dy=1.500 mm

Maximum value of SAR (interpolated) = 0.416 W/kg

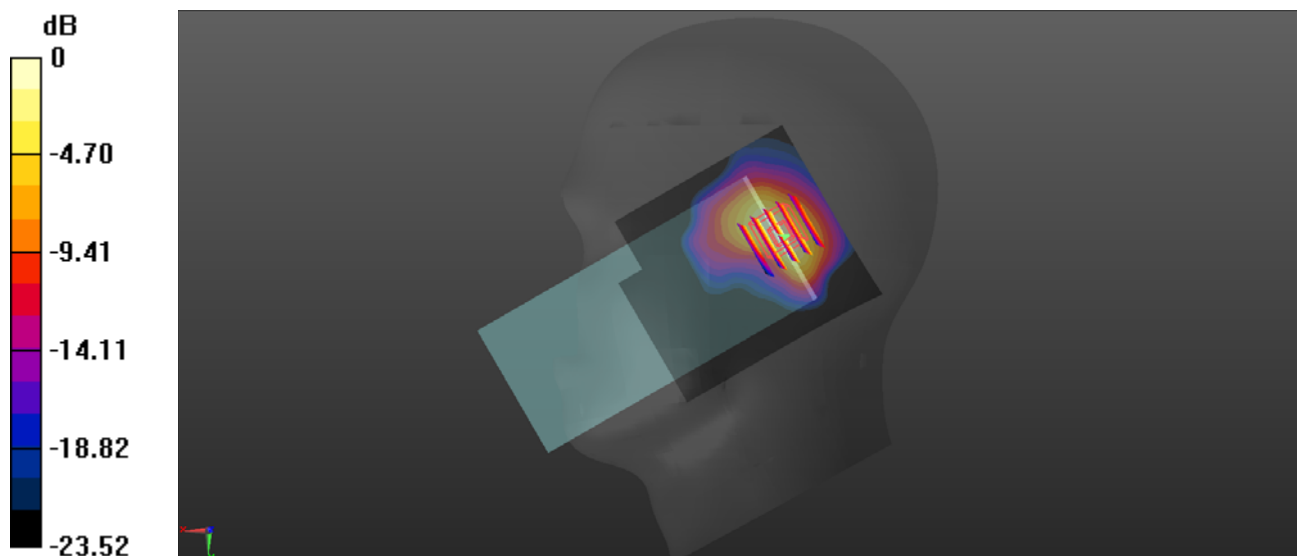
**Ch132072/Zoom Scan (5x5x7)/Cube 0:** Measurement grid: dx=8mm, dy=8mm, dz=5mm

Reference Value = 14.31 V/m; Power Drift = -0.07 dB

Peak SAR (extrapolated) = 0.0.594 W/kg

**SAR(1 g) = 0.237 W/kg; SAR(10 g) = 0.123 W/kg**

Maximum value of SAR (measured) = 0.415 W/kg



0 dB = 0.415 W/kg

### 5G NR n2\_20MHz\_DFT-S-QPSK\_1RB\_1Offset\_Right Cheek\_Ch376000\_Ant 3

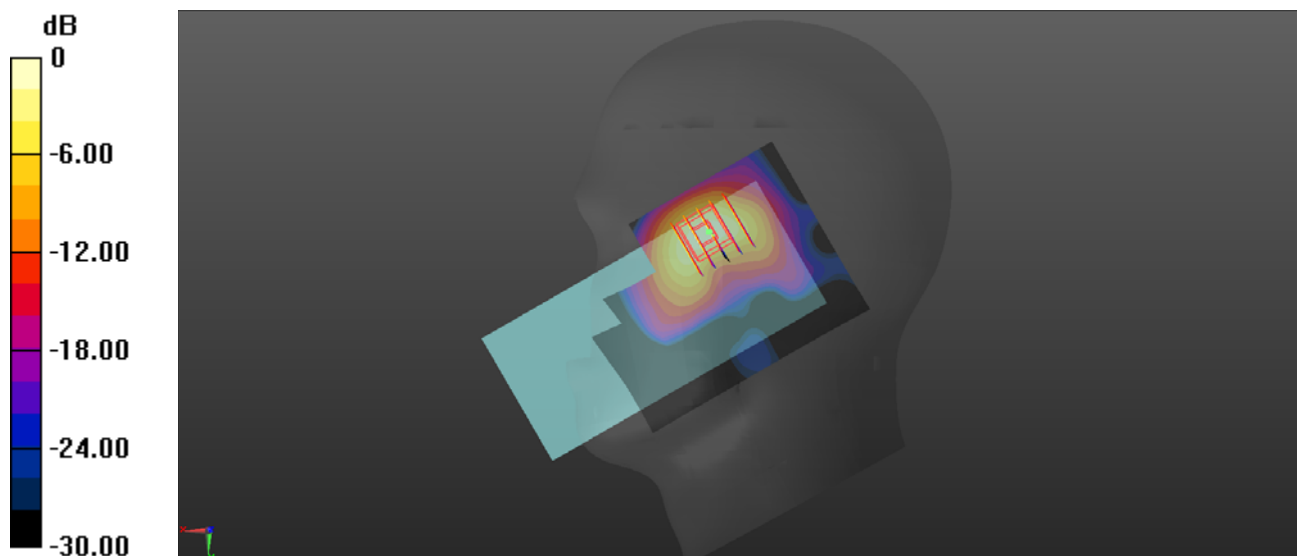
Communication System: UID 0, 5G NR (0); Frequency: 1880 MHz; Duty Cycle: 1:1  
Medium: HSL\_1900 Medium parameters used:  $f = 1880$  MHz;  $\sigma = 1.321$  S/m;  $\epsilon_r = 39.882$ ;  $\rho = 1000$  kg/m<sup>3</sup>  
Ambient Temperature : 23.2 °C; Liquid Temperature : 22.1 °C

#### DASY5 Configuration:

- Probe: EX3DV4 - SN7608; ConvF(8.04, 8.04, 8.04) @ 1880 MHz; Calibrated: 2020.11.27
- Sensor-Surface: 2mm (Mechanical Surface Detection)
- Electronics: DAE4 Sn1643; Calibrated: 2020.11.30
- Phantom: Twin-SAM; Type: QD 000 P41 Ax; Serial: 2020
- Measurement SW: DASY52, Version 52.10 (4); SEMCAD X Version 14.6.14 (7483)

**Ch376000/Area Scan (71x91x1):** Interpolated grid: dx=1.500 mm, dy=1.500 mm  
Maximum value of SAR (interpolated) = 0.702 W/kg

**Ch376000/Zoom Scan (5x5x7)/Cube 0:** Measurement grid: dx=8mm, dy=8mm, dz=5mm  
Reference Value = 3.193 V/m; Power Drift = 0.02 dB  
Peak SAR (extrapolated) = 1.07 W/kg  
**SAR(1 g) = 0.479 W/kg; SAR(10 g) = 0.208 W/kg**  
Maximum value of SAR (measured) = 0.787 W/kg



0 dB = 0.787 W/kg

## 5G NR n5\_20MHz\_DFT-S-QPSK\_1RB\_1Offset\_Right Cheek\_Ch167800\_Ant 2

Communication System: UID 0, 5G NR (0); Frequency: 839 MHz; Duty Cycle: 1:1

Medium: HSL\_835 Medium parameters used:  $f = 839$  MHz;  $\sigma = 0.948$  S/m;  $\epsilon_r = 43.016$ ;  $\rho = 1000$  kg/m<sup>3</sup>

Ambient Temperature : 23.2 °C; Liquid Temperature : 22.3 °C

DASY5 Configuration:

- Probe: EX3DV4 - SN7608; ConvF(9.57, 9.57, 9.57) @ 839 MHz; Calibrated: 2020.11.27
- Sensor-Surface: 2mm (Mechanical Surface Detection)
- Electronics: DAE4 Sn1643; Calibrated: 2020.11.30
- Phantom: Twin-SAM; Type: QD 000 P41 Ax; Serial: 2020
- Measurement SW: DASY52, Version 52.10 (4); SEMCAD X Version 14.6.14 (7483)

**Ch167800/Area Scan (71x81x1):** Interpolated grid: dx=1.500 mm, dy=1.500 mm

Maximum value of SAR (interpolated) = 0.455 W/kg

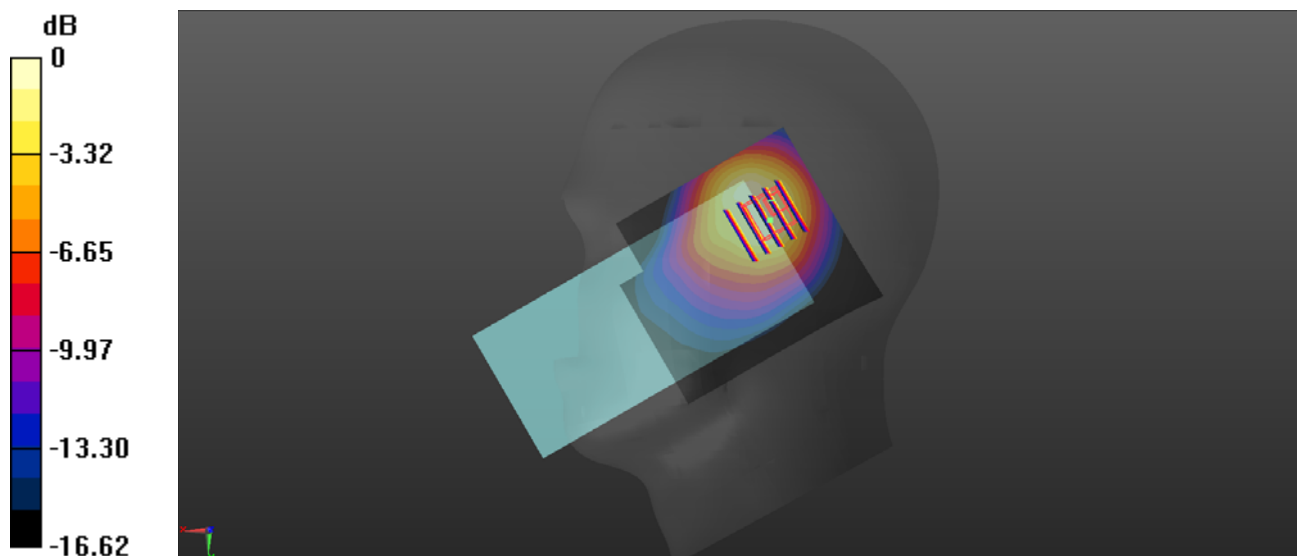
**Ch167800/Zoom Scan (5x5x7)/Cube 0:** Measurement grid: dx=8mm, dy=8mm, dz=5mm

Reference Value = 16.49 V/m; Power Drift = -0.03 dB

Peak SAR (extrapolated) = 0.655 W/kg

**SAR(1 g) = 0.292 W/kg; SAR(10 g) = 0.154 W/kg**

Maximum value of SAR (measured) = 0.464 W/kg



0 dB = 0.464 W/kg

### 5G NR n66\_20MHz\_DFT-S-QPSK\_1RB\_1Offset\_Right Cheek\_Ch349000\_Ant 3

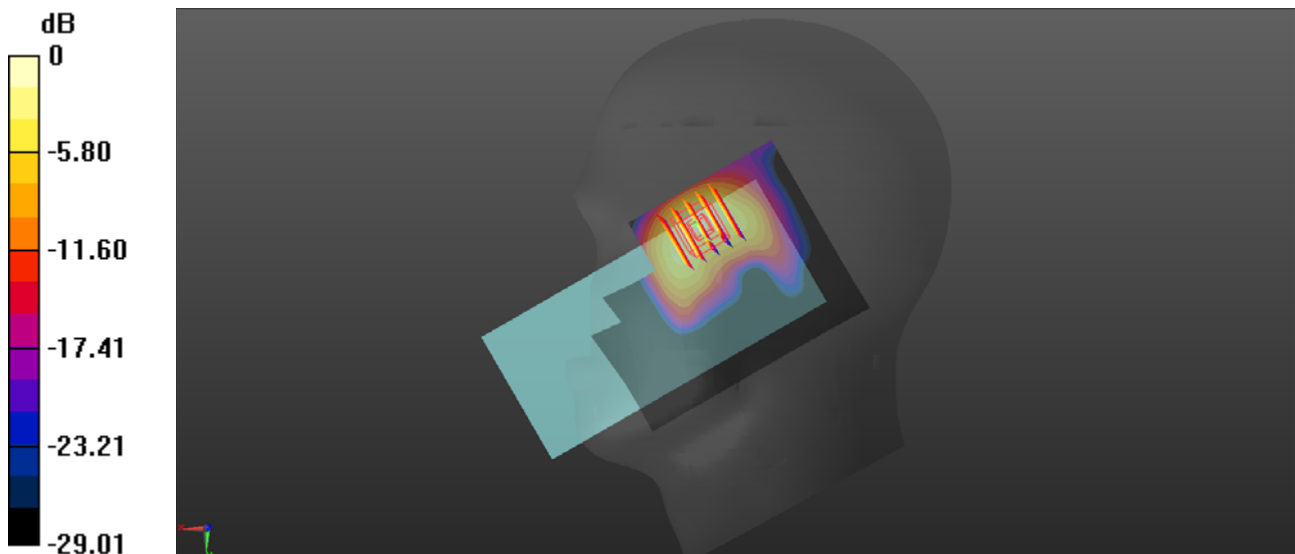
Communication System: UID 0, 5G NR (0); Frequency: 1745 MHz; Duty Cycle: 1:1  
Medium: HSL\_1750 Medium parameters used:  $f = 1745$  MHz;  $\sigma = 1.438$  S/m;  $\epsilon_r = 39.567$ ;  $\rho = 1000$  kg/m<sup>3</sup>  
Ambient Temperature : 23.2 °C; Liquid Temperature : 22.1 °C

#### DASY5 Configuration:

- Probe: EX3DV4 - SN7608; ConvF(8.32, 8.32, 8.32) @ 1745 MHz; Calibrated: 2020.11.27
- Sensor-Surface: 2mm (Mechanical Surface Detection)
- Electronics: DAE4 Sn1643; Calibrated: 2020.11.30
- Phantom: Twin-SAM; Type: QD 000 P41 Ax; Serial: 2020
- Measurement SW: DASY52, Version 52.10 (4); SEMCAD X Version 14.6.14 (7483)

**Ch349000/Area Scan (71x91x1):** Interpolated grid: dx=1.500 mm, dy=1.500 mm  
Maximum value of SAR (interpolated) = 0.368 W/kg

**Ch349000/Zoom Scan (5x5x7)/Cube 0:** Measurement grid: dx=8mm, dy=8mm, dz=5mm  
Reference Value = 3.703 V/m; Power Drift = -0.06 dB  
Peak SAR (extrapolated) = 0.717 W/kg  
**SAR(1 g) = 0.287 W/kg; SAR(10 g) = 0.124 W/kg**  
Maximum value of SAR (measured) = 0.383 W/kg



0 dB = 0.383 W/kg = -4.17 dBW/kg



### 5G NR n77\_100MHz\_DFT-S-QPSK\_1RB\_1Offset\_Right Tilt\_Ch654800\_Ant 3

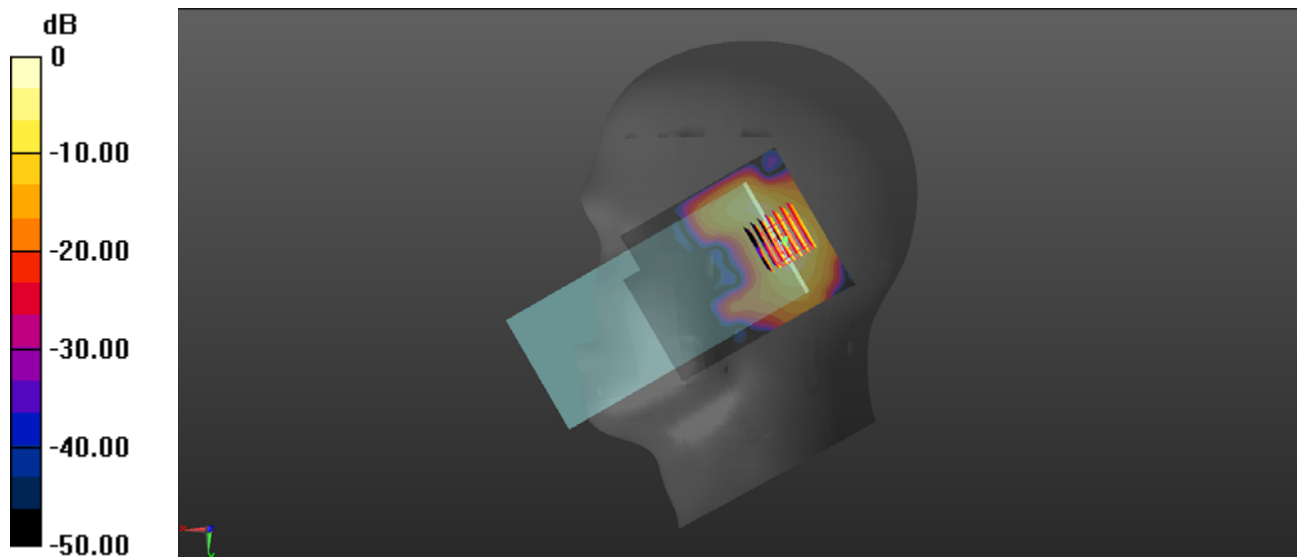
Communication System: UID 0, 5G NR (0); Frequency: 3822 MHz; Duty Cycle: 1:1  
Medium: HSL\_3900 Medium parameters used:  $f = 3822$  MHz;  $\sigma = 3.221$  S/m;  $\epsilon_r = 39.371$ ;  $\rho = 1000$  kg/m<sup>3</sup>  
Ambient Temperature : 23.2 °C; Liquid Temperature : 22.3 °C

#### DASY5 Configuration:

- Probe: EX3DV4 - SN7608; ConvF(6.12, 6.12, 6.12) @ 3822 MHz; Calibrated: 2020.11.27
- Sensor-Surface: 2mm (Mechanical Surface Detection)
- Electronics: DAE4 Sn1643; Calibrated: 2020.11.30
- Phantom: Twin-SAM; Type: QD 000 P41 Ax; Serial: 2020
- Measurement SW: DASY52, Version 52.10 (4); SEMCAD X Version 14.6.14 (7483)

**Ch654800/Area Scan (81x101x1):** Interpolated grid: dx=1.200 mm, dy=1.200 mm  
Maximum value of SAR (interpolated) = 0.812 W/kg

**Ch654800/Zoom Scan (7x7x7)/Cube 0:** Measurement grid: dx=5mm, dy=5mm, dz=5mm  
Reference Value = 7.863 V/m; Power Drift = 0.04 dB  
Peak SAR (extrapolated) = 1.29 W/kg  
**SAR(1 g) = 0.521 W/kg; SAR(10 g) = 0.175 W/kg**  
Smallest distance from peaks to all points 3 dB below = 6.7 mm  
Ratio of SAR at M2 to SAR at M1 = 38.6%  
Maximum value of SAR (measured) = 0.840 W/kg



0 dB = 0.840 W/kg

## WLAN 2.4GHz\_802.11b 1Mbps\_Left Cheek\_Ch11\_Ant 5

Communication System: UID 0, WLAN 2.4GHz 802.11b (0); Frequency: 2462 MHz; Duty Cycle: 1:1  
Medium: HSL\_2450 Medium parameters used:  $f = 2462$  MHz;  $\sigma = 1.826$  S/m;  $\epsilon_r = 38.806$ ;  $\rho = 1000$  kg/m<sup>3</sup>

Ambient Temperature : 23.2 °C; Liquid Temperature : 22.4 °C

### DASY5 Configuration:

- Probe: EX3DV4 - SN7608; ConvF(7.58, 7.58, 7.58) @ 2462 MHz; Calibrated: 2020.11.27
- Sensor-Surface: 2mm (Mechanical Surface Detection)
- Electronics: DAE4 Sn1643; Calibrated: 2020.11.30
- Phantom: Twin-SAM; Type: QD 000 P41 Ax; Serial: 2020
- Measurement SW: DASY52, Version 52.10 (4); SEMCAD X Version 14.6.14 (7483)

**Ch11/Area Scan (81x101x1):** Interpolated grid: dx=1.200 mm, dy=1.200 mm

Maximum value of SAR (interpolated) = 0.412 W/kg

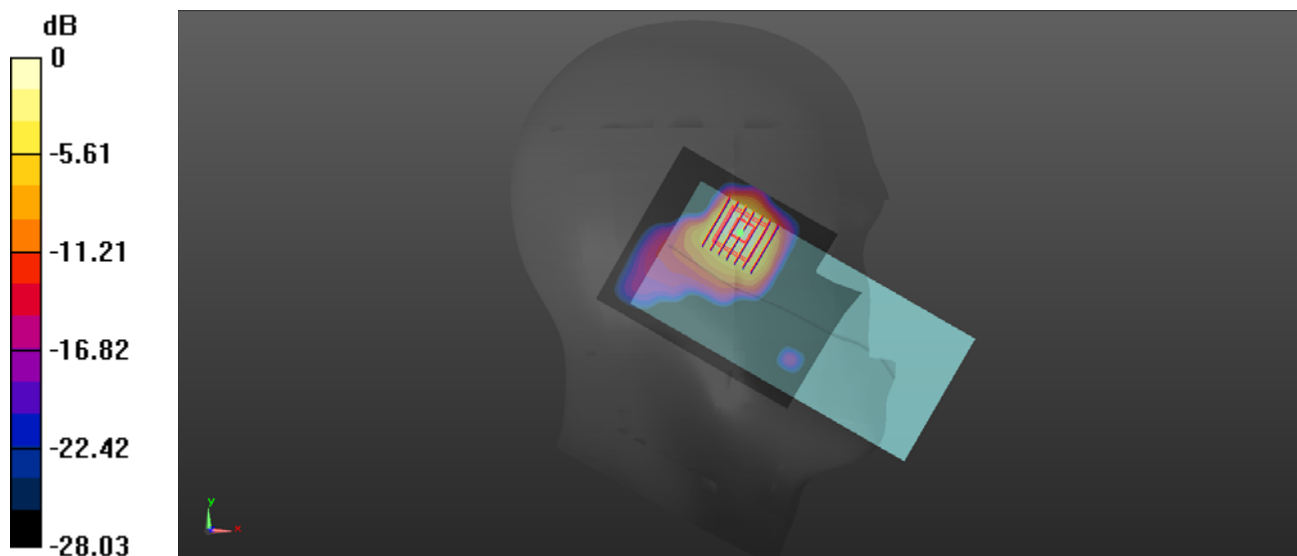
**Ch11/Zoom Scan (7x7x7)/Cube 0:** Measurement grid: dx=5mm, dy=5mm, dz=5mm

Reference Value = 2.888 V/m; Power Drift = 0.09 dB

Peak SAR (extrapolated) = 0.634 W/kg

**SAR(1 g) = 0.221 W/kg; SAR(10 g) = 0.085 W/kg**

Maximum value of SAR (measured) = 0.389 W/kg



0 dB = 0.389 W/kg

## WLAN 5.2GHz\_802.11a 6Mbps\_Left Tilt\_Ch44\_Ant 6

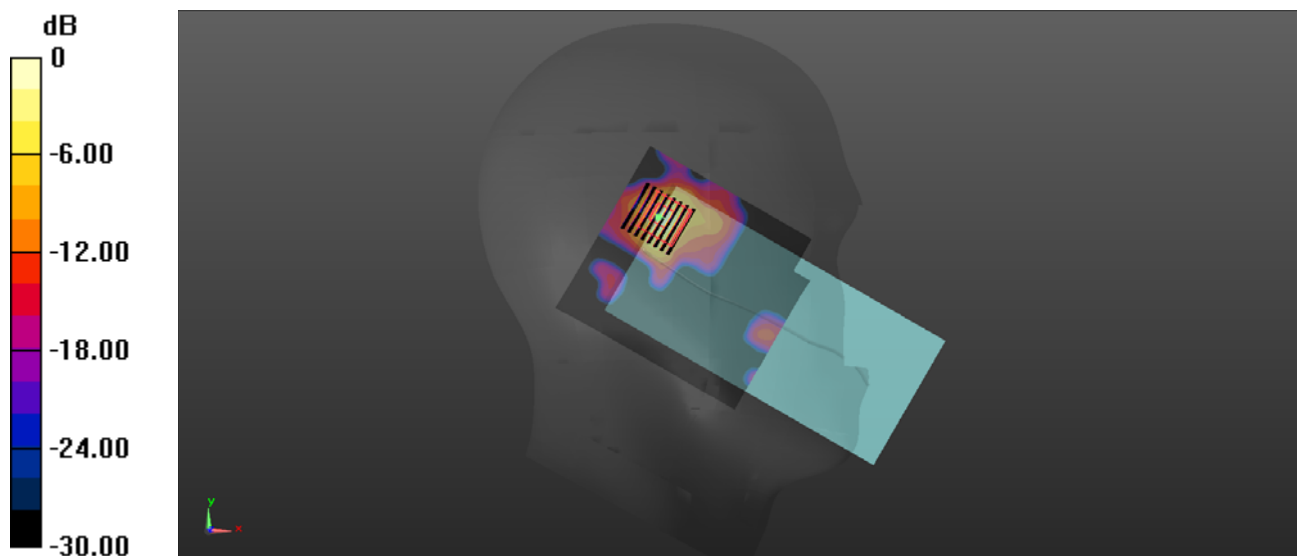
Communication System: UID 0, WLAN 5GHz (0); Frequency: 5220 MHz; Duty Cycle: 1:1  
Medium: HSL\_5250 Medium parameters used:  $f = 5220$  MHz;  $\sigma = 4.667$  S/m;  $\epsilon_r = 36.107$ ;  $\rho = 1000$  kg/m<sup>3</sup>  
Ambient Temperature : 23.2 °C; Liquid Temperature : 22.1 °C

### DASY5 Configuration:

- Probe: EX3DV4 - SN7608; ConvF(5.36, 5.36, 5.36) @ 5220 MHz; Calibrated: 2020.11.27
- Sensor-Surface: 2mm (Mechanical Surface Detection)
- Electronics: DAE4 Sn1643; Calibrated: 2020.11.30
- Phantom: Twin-SAM; Type: QD 000 P41 Ax; Serial: 2020
- Measurement SW: DASY52, Version 52.10 (4); SEMCAD X Version 14.6.14 (7483)

**Ch44/Area Scan (101x111x1):** Interpolated grid: dx=1.000 mm, dy=1.000 mm  
Maximum value of SAR (interpolated) = 0.710 W/kg

**Ch44/Zoom Scan (8x8x15)/Cube 0:** Measurement grid: dx=4mm, dy=4mm, dz=2mm  
Reference Value = 1.779 V/m; Power Drift = 0.08 dB  
Peak SAR (extrapolated) = 1.29 W/kg  
**SAR(1 g) = 0.322 W/kg; SAR(10 g) = 0.082 W/kg**  
Maximum value of SAR (measured) = 0.728 W/kg



0 dB = 0.728 W/kg

## WLAN 5.3GHz\_802.11a 6Mbps\_Left Tilt\_Ch52\_Ant 6

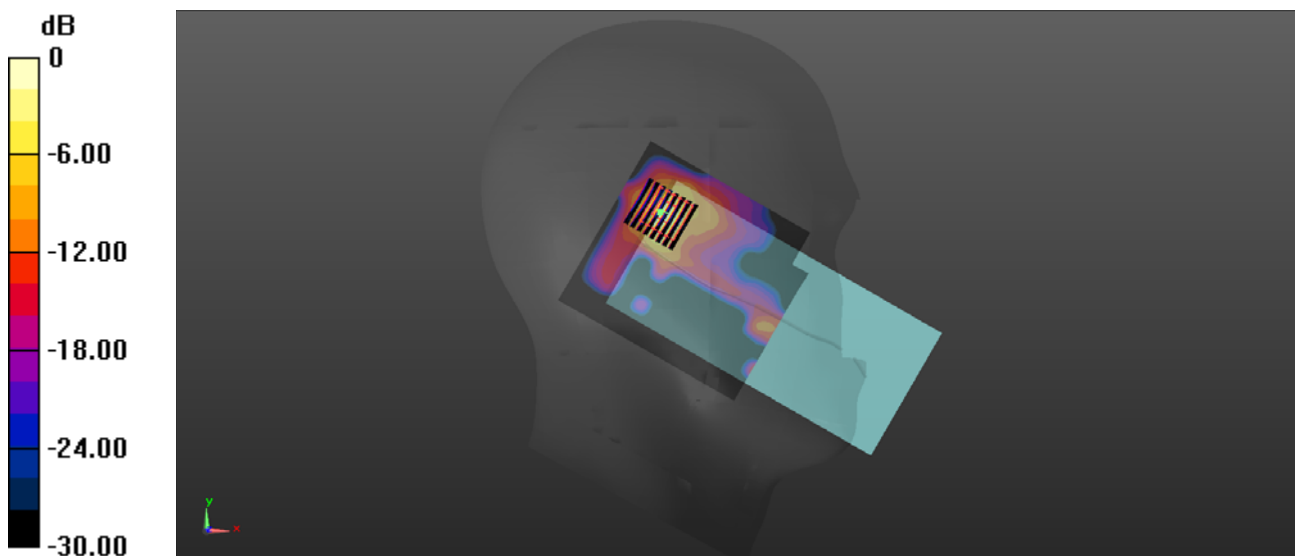
Communication System: UID 0, WLAN 5GHz (0); Frequency: 5260 MHz; Duty Cycle: 1:1  
Medium: HSL\_5250 Medium parameters used:  $f = 5260$  MHz;  $\sigma = 4.714$  S/m;  $\epsilon_r = 36.032$ ;  $\rho = 1000$  kg/m<sup>3</sup>  
Ambient Temperature : 23.2 °C; Liquid Temperature : 22.1 °C

### DASY5 Configuration:

- Probe: EX3DV4 - SN7608; ConvF(5.36, 5.36, 5.36) @ 5260 MHz; Calibrated: 2020.11.27
- Sensor-Surface: 2mm (Mechanical Surface Detection)
- Electronics: DAE4 Sn1643; Calibrated: 2020.11.30
- Phantom: Twin-SAM; Type: QD 000 P41 Ax; Serial: 2020
- Measurement SW: DASY52, Version 52.10 (4); SEMCAD X Version 14.6.14 (7483)

**Ch52/Area Scan (101x111x1):** Interpolated grid: dx=1.000 mm, dy=1.000 mm  
Maximum value of SAR (interpolated) = 0.699 W/kg

**Ch52/Zoom Scan (8x8x15)/Cube 0:** Measurement grid: dx=4mm, dy=4mm, dz=2mm  
Reference Value = 3.565 V/m; Power Drift = -0.06 dB  
Peak SAR (extrapolated) = 1.50 W/kg  
**SAR(1 g) = 0.339 W/kg; SAR(10 g) = 0.086 W/kg**  
Maximum value of SAR (measured) = 0.742 W/kg



0 dB = 0.742 W/kg

## WLAN 5.5GHz\_802.11a 6Mbps\_Left Tilt\_Ch100\_Ant 6

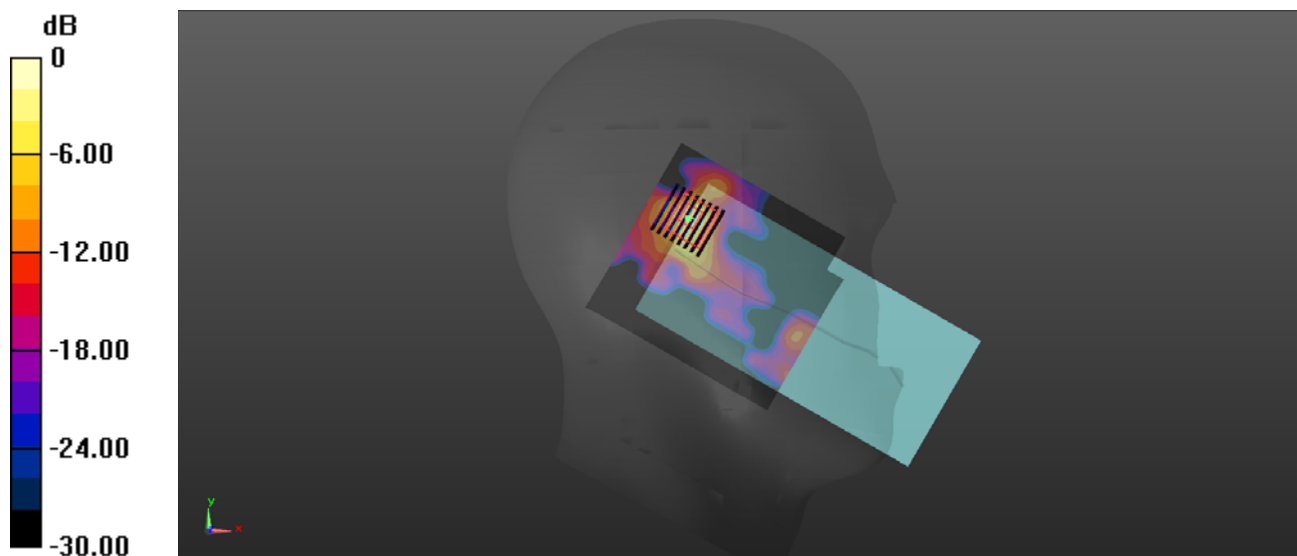
Communication System: UID 0, WLAN 5GHz (0); Frequency: 5500 MHz;Duty Cycle: 1:1  
Medium: HSL\_5600 Medium parameters used:  $f = 5500$  MHz;  $\sigma = 5.007$  S/m;  $\epsilon_r = 35.63$ ;  $\rho = 1000$  kg/m<sup>3</sup>  
Ambient Temperature : 23.2 °C; Liquid Temperature : 22.1 °C

### DASY5 Configuration:

- Probe: EX3DV4 - SN7608; ConvF(4.77, 4.77, 4.77) @ 5500 MHz; Calibrated: 2020.11.27
- Sensor-Surface: 2mm (Mechanical Surface Detection)
- Electronics: DAE4 Sn1643; Calibrated: 2020.11.30
- Phantom: Twin-SAM; Type: QD 000 P41 Ax; Serial: 2020
- Measurement SW: DASY52, Version 52.10 (4); SEMCAD X Version 14.6.14 (7483)

**Ch100/Area Scan (101x111x1):** Interpolated grid: dx=1.000 mm, dy=1.000 mm  
Maximum value of SAR (interpolated) = 0.831 W/kg

**Ch100/Zoom Scan (8x8x15)/Cube 0:** Measurement grid: dx=4mm, dy=4mm, dz=2mm  
Reference Value = 3.110 V/m; Power Drift = 0.02 dB  
Peak SAR (extrapolated) = 2.07 W/kg  
**SAR(1 g) = 0.317 W/kg; SAR(10 g) = 0.080 W/kg**  
Maximum value of SAR (measured) = 0.737 W/kg



0 dB = 0.737 W/kg

## WLAN 5.8GHz\_802.11a 6Mbps\_Left Tilt\_Ch149\_Ant6

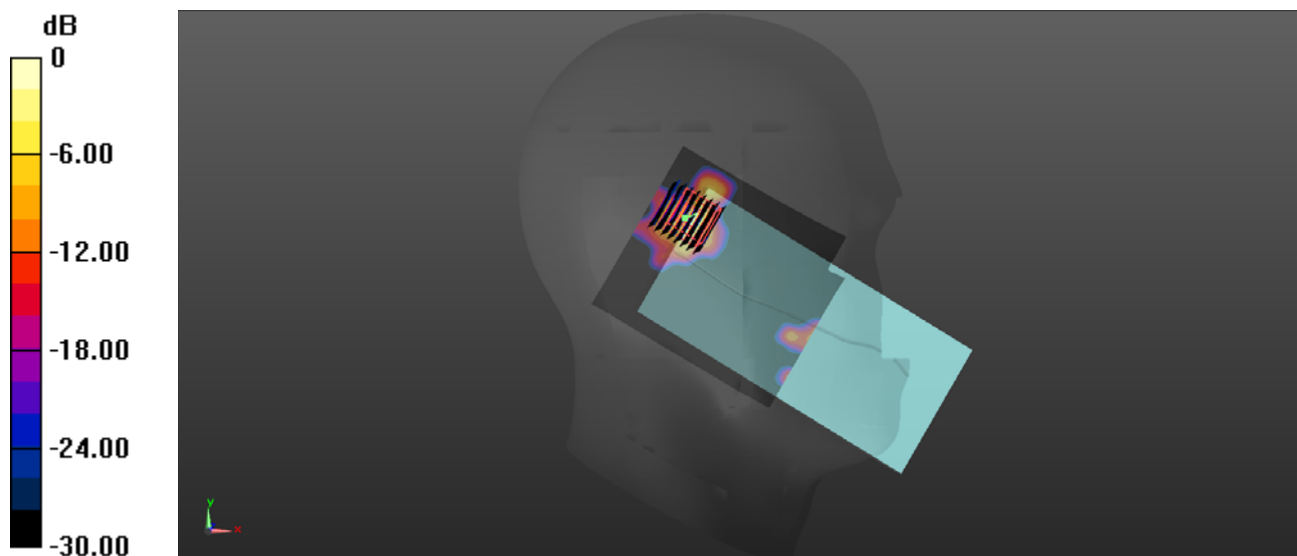
Communication System: UID 0, WLAN 5GHz (0); Frequency: 5745 MHz; Duty Cycle: 1:1  
Medium: HSL\_5750 Medium parameters used:  $f = 5745$  MHz;  $\sigma = 5.291$  S/m;  $\epsilon_r = 35.168$ ;  $\rho = 1000$  kg/m<sup>3</sup>  
Ambient Temperature : 23.2 °C; Liquid Temperature : 22.1 °C

### DASY5 Configuration:

- Probe: EX3DV4 - SN7608; ConvF(4.78, 4.78, 4.78) @ 5745 MHz; Calibrated: 2020.11.27
- Sensor-Surface: 2mm (Mechanical Surface Detection)
- Electronics: DAE4 Sn1643; Calibrated: 2020.11.30
- Phantom: Twin-SAM; Type: QD 000 P41 Ax; Serial: 2020
- Measurement SW: DASY52, Version 52.10 (4); SEMCAD X Version 14.6.14 (7483)

**Ch149/Area Scan (101x111x1):** Interpolated grid: dx=1.000 mm, dy=1.000 mm  
Maximum value of SAR (interpolated) = 0.561 W/kg

**Ch149/Zoom Scan (8x8x15)/Cube 0:** Measurement grid: dx=4mm, dy=4mm, dz=2mm  
Reference Value = 0.8090 V/m; Power Drift = 0.01 dB  
Peak SAR (extrapolated) = 0.979 W/kg  
**SAR(1 g) = 0.197 W/kg; SAR(10 g) = 0.045 W/kg**  
Maximum value of SAR (measured) = 0.523 W/kg



0 dB = 0.523 W/kg

## GSM850\_GPRS(4 TX slots)\_Back Side10mm\_Ch251\_Ant 2

Communication System: UID 0, GSM850(class 12) (0); Frequency: 848.8 MHz; Duty Cycle: 1:2.08  
 Medium: HSL\_835 Medium parameters used:  $f = 849$  MHz;  $\sigma = 0.964$  S/m;  $\epsilon_r = 42.971$ ;  $\rho = 1000$  kg/m<sup>3</sup>

Ambient Temperature : 23.2 °C; Liquid Temperature : 22.3 °C

### DASY5 Configuration:

- Probe: EX3DV4 - SN7608; ConvF(9.57, 9.57, 9.57) @ 848.8 MHz; Calibrated: 2020.11.27
- Sensor-Surface: 2mm (Mechanical Surface Detection)
- Electronics: DAE4 Sn1643; Calibrated: 2020.11.30
- Phantom: Twin-SAM; Type: QD 000 P41 Ax; Serial: 2020
- Measurement SW: DASY52, Version 52.10 (4); SEMCAD X Version 14.6.14 (7483)

**Ch251/Area Scan (71x81x1):** Interpolated grid: dx=1.500 mm, dy=1.500 mm

Maximum value of SAR (interpolated) = 0.150 W/kg

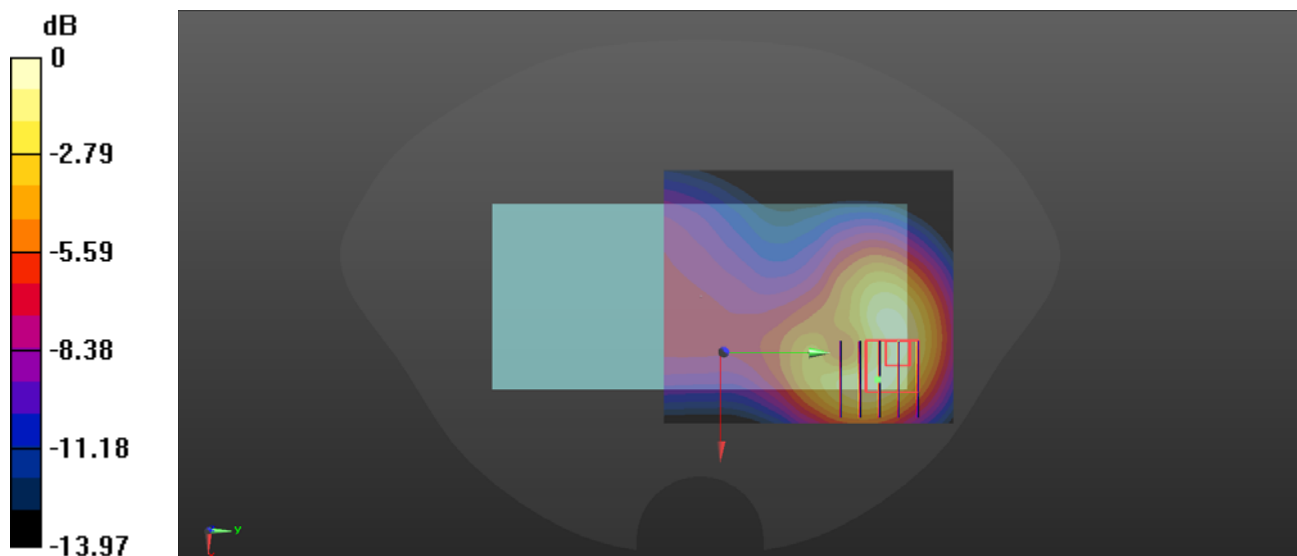
**Ch251/Zoom Scan (5x5x7)/Cube 0:** Measurement grid: dx=8mm, dy=8mm, dz=5mm

Reference Value = 5.230 V/m; Power Drift = -0.06 dB

Peak SAR (extrapolated) = 0.214 W/kg

**SAR(1 g) = 0.108 W/kg; SAR(10 g) = 0.056 W/kg**

Maximum value of SAR (measured) = 0.160 W/kg



0 dB = 0.160 W/kg

### GSM1900\_GPRS(4 TX slots)\_Back Side\_10mm\_Ch661\_Ant 3

Communication System: UID 0, GSM1900(class 12) (0); Frequency: 1880 MHz; Duty Cycle: 1:2.08  
Medium: HSL\_1900 Medium parameters used:  $f = 1880$  MHz;  $\sigma = 1.321$  S/m;  $\epsilon_r = 39.882$ ;  $\rho = 1000$  kg/m<sup>3</sup>

Ambient Temperature : 23.2 °C; Liquid Temperature : 22.1 °C

#### DASY5 Configuration:

- Probe: EX3DV4 - SN7608; ConvF(8.04, 8.04, 8.04) @ 1880 MHz; Calibrated: 2020.11.27
- Sensor-Surface: 2mm (Mechanical Surface Detection)
- Electronics: DAE4 Sn1643; Calibrated: 2020.11.30
- Phantom: Twin-SAM; Type: QD 000 P41 Ax; Serial: 2020
- Measurement SW: DASY52, Version 52.10 (4); SEMCAD X Version 14.6.14 (7483)

**Ch661/Area Scan (71x81x1):** Interpolated grid: dx=1.500 mm, dy=1.500 mm

Maximum value of SAR (interpolated) = 0.128 W/kg

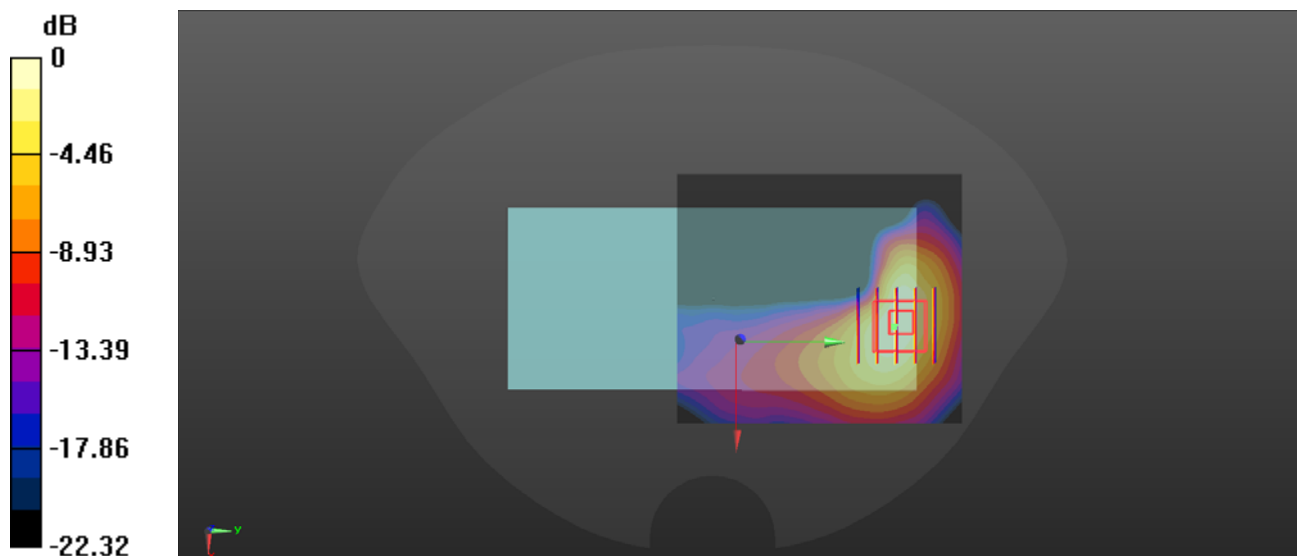
**Ch661/Zoom Scan (5x5x7)/Cube 0:** Measurement grid: dx=8mm, dy=8mm, dz=5mm

Reference Value = 0 V/m; Power Drift = 0.05 dB

Peak SAR (extrapolated) = 0.154 W/kg

**SAR(1 g) = 0.082 W/kg; SAR(10 g) = 0.042 W/kg**

Maximum value of SAR (measured) = 0.116 W/kg



0 dB = 0.116 W/kg



### GSM1900\_GPRS(4 TX slots)\_Top Side\_10mm\_Ch661\_Ant 3

Communication System: UID 0, GSM1900(class 12) (0); Frequency: 1880 MHz; Duty Cycle: 1:2.08  
Medium: HSL\_1900 Medium parameters used:  $f = 1880$  MHz;  $\sigma = 1.321$  S/m;  $\epsilon_r = 39.882$ ;  $\rho = 1000$  kg/m<sup>3</sup>

Ambient Temperature : 23.2 °C; Liquid Temperature : 22.1 °C

#### DASY5 Configuration:

- Probe: EX3DV4 - SN7608; ConvF(8.04, 8.04, 8.04) @ 1880 MHz; Calibrated: 2020.11.27
- Sensor-Surface: 2mm (Mechanical Surface Detection)
- Electronics: DAE4 Sn1643; Calibrated: 2020.11.30
- Phantom: Twin-SAM; Type: QD 000 P41 Ax; Serial: 2020
- Measurement SW: DASY52, Version 52.10 (4); SEMCAD X Version 14.6.14 (7483)

**Ch661/Area Scan (41x81x1):** Interpolated grid: dx=1.500 mm, dy=1.500 mm

Maximum value of SAR (interpolated) = 0.155 W/kg

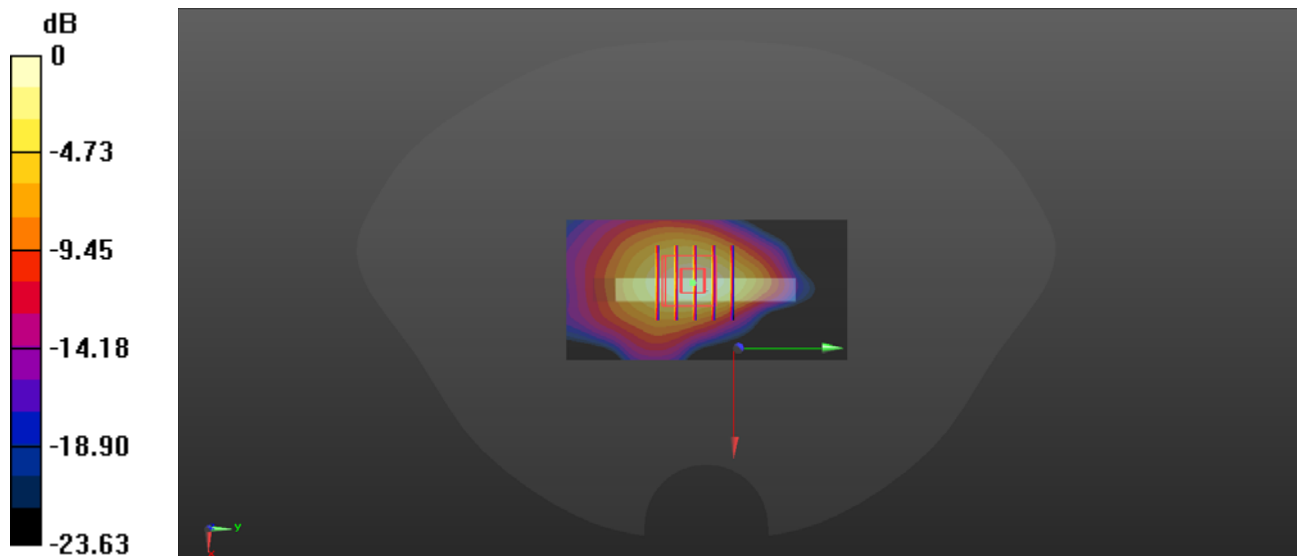
**Ch661/Zoom Scan (5x5x7)/Cube 0:** Measurement grid: dx=8mm, dy=8mm, dz=5mm

Reference Value = 8.403 V/m; Power Drift = -0.08 dB

Peak SAR (extrapolated) = 0.193 W/kg

**SAR(1 g) = 0.101 W/kg; SAR(10 g) = 0.051 W/kg**

Maximum value of SAR (measured) = 0.148 W/kg



0 dB = 0.148 W/kg

## WCDMA Band II\_RMC 12.2Kbps\_Back Side\_10mm\_Ch9400\_Ant 3

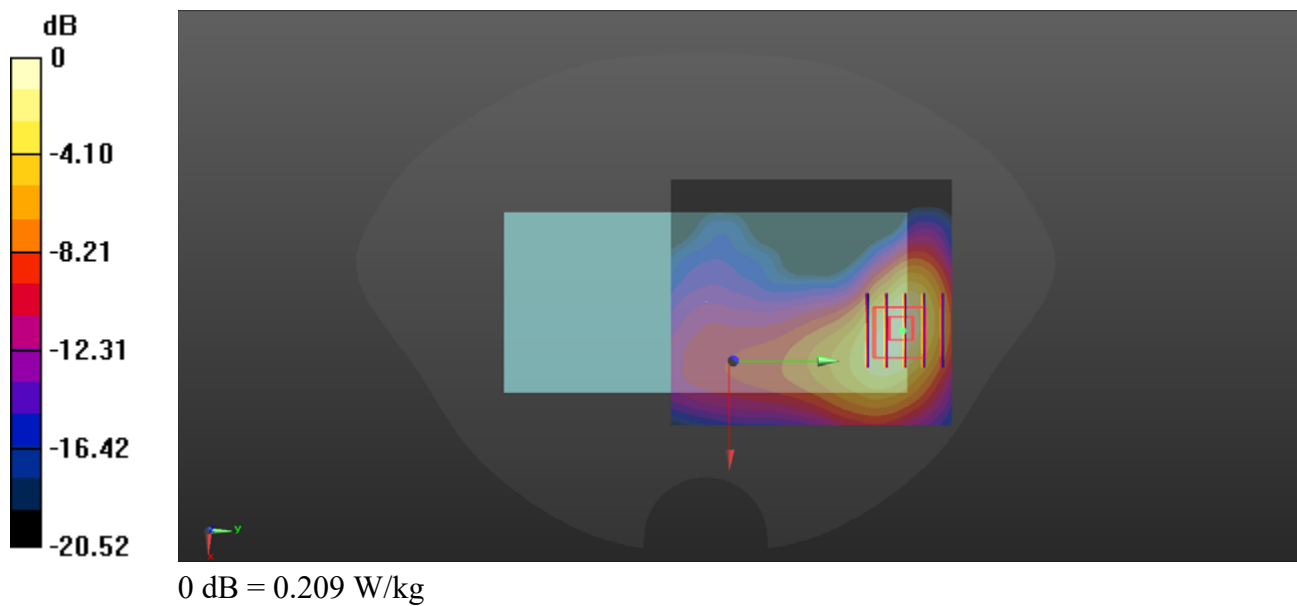
Communication System: UID 0, UMTS-FDD (0); Frequency: 1880 MHz; Duty Cycle: 1:1  
Medium: HSL\_1900 Medium parameters used:  $f = 1880$  MHz;  $\sigma = 1.321$  S/m;  $\epsilon_r = 39.882$ ;  $\rho = 1000$  kg/m<sup>3</sup>  
Ambient Temperature : 23.2 °C; Liquid Temperature : 22.1 °C

### DASY5 Configuration:

- Probe: EX3DV4 - SN7608; ConvF(8.04, 8.04, 8.04) @ 1880 MHz; Calibrated: 2020.11.27
- Sensor-Surface: 2mm (Mechanical Surface Detection)
- Electronics: DAE4 Sn1643; Calibrated: 2020.11.30
- Phantom: Twin-SAM; Type: QD 000 P41 Ax; Serial: 2020
- Measurement SW: DASY52, Version 52.10 (4); SEMCAD X Version 14.6.14 (7483)

**Ch9400/Area Scan (71x81x1):** Interpolated grid: dx=1.500 mm, dy=1.500 mm  
Maximum value of SAR (interpolated) = 0.206 W/kg

**Ch9400/Zoom Scan (5x5x7)/Cube 0:** Measurement grid: dx=8mm, dy=8mm, dz=5mm  
Reference Value = 2.185 V/m; Power Drift = 0.08 dB  
Peak SAR (extrapolated) = 0.272 W/kg  
**SAR(1 g) = 0.147 W/kg; SAR(10 g) = 0.077 W/kg**  
Maximum value of SAR (measured) = 0.209 W/kg



## WCDMA Band II\_RMC 12.2Kbps\_Top Side\_10mm\_Ch9400\_Ant 3

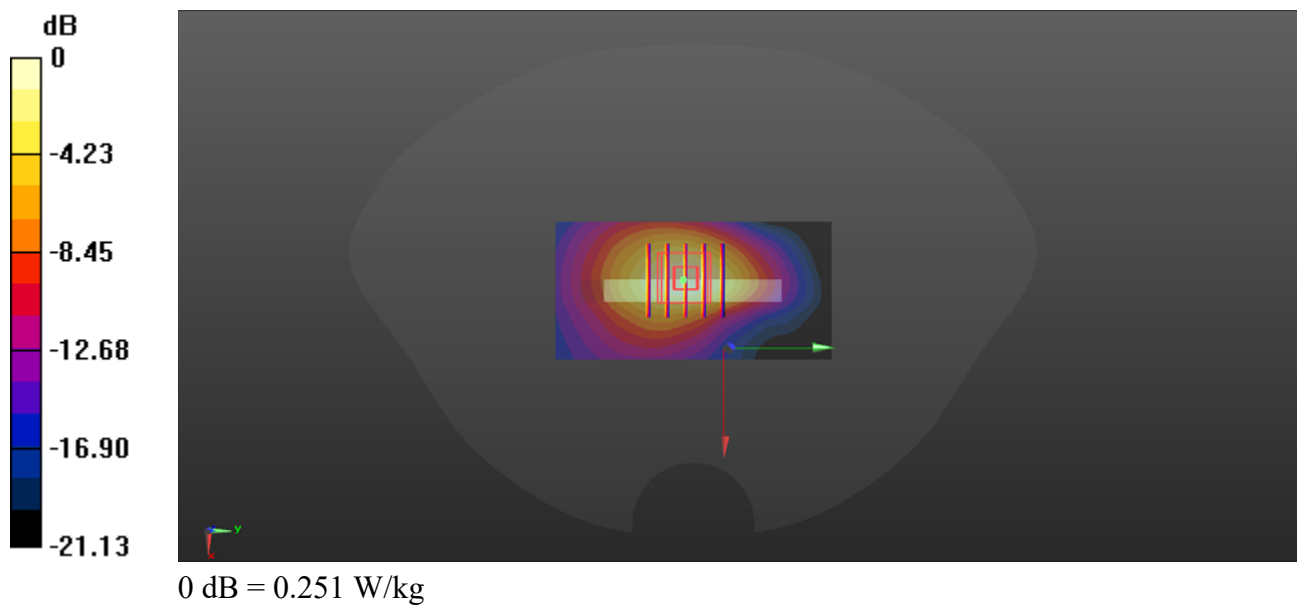
Communication System: UID 0, UMTS-FDD (0); Frequency: 1880 MHz; Duty Cycle: 1:1  
Medium: HSL\_1900 Medium parameters used:  $f = 1880$  MHz;  $\sigma = 1.321$  S/m;  $\epsilon_r = 39.882$ ;  $\rho = 1000$  kg/m<sup>3</sup>  
Ambient Temperature : 23.2 °C; Liquid Temperature : 22.1 °C

### DASY5 Configuration:

- Probe: EX3DV4 - SN7608; ConvF(8.04, 8.04, 8.04) @ 1880 MHz; Calibrated: 2020.11.27
- Sensor-Surface: 2mm (Mechanical Surface Detection)
- Electronics: DAE4 Sn1643; Calibrated: 2020.11.30
- Phantom: Twin-SAM; Type: QD 000 P41 Ax; Serial: 2020
- Measurement SW: DASY52, Version 52.10 (4); SEMCAD X Version 14.6.14 (7483)

**Ch9400/Area Scan (41x81x1):** Interpolated grid: dx=1.500 mm, dy=1.500 mm  
Maximum value of SAR (interpolated) = 0.261 W/kg

**Ch9400/Zoom Scan (5x5x7)/Cube 0:** Measurement grid: dx=8mm, dy=8mm, dz=5mm  
Reference Value = 11.29 V/m; Power Drift = -0.07 dB  
Peak SAR (extrapolated) = 0.326 W/kg  
**SAR(1 g) = 0.175 W/kg; SAR(10 g) = 0.090 W/kg**  
Maximum value of SAR (measured) = 0.251 W/kg



### WCDMA Band IV\_RMC 12.2Kbps\_Back Side\_10mm\_Ch1413\_Ant 3

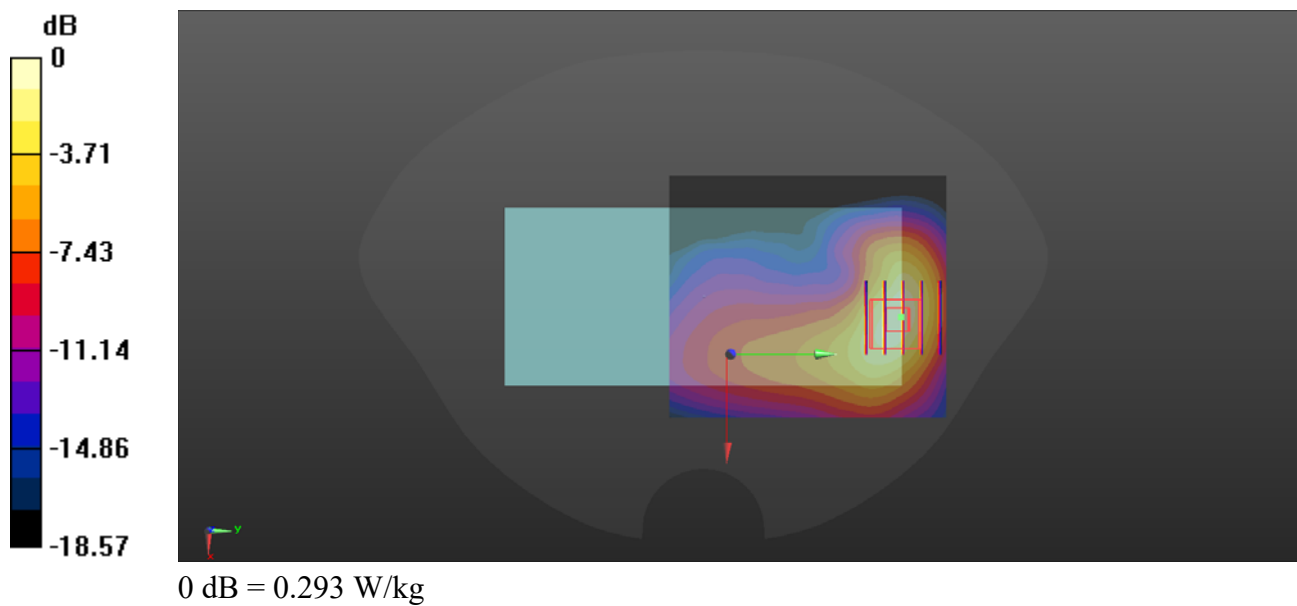
Communication System: UID 0, UMTS-FDD (0); Frequency: 1732.6 MHz; Duty Cycle: 1:1  
Medium: HSL\_1750 Medium parameters used:  $f = 1733$  MHz;  $\sigma = 1.412$  S/m;  $\epsilon_r = 39.814$ ;  $\rho = 1000$  kg/m<sup>3</sup>  
Ambient Temperature : 23.2 °C; Liquid Temperature : 22.1 °C

#### DASY5 Configuration:

- Probe: EX3DV4 - SN7608; ConvF(8.32, 8.32, 8.32) @ 1732.6 MHz; Calibrated: 2020.11.27
- Sensor-Surface: 2mm (Mechanical Surface Detection)
- Electronics: DAE4 Sn1643; Calibrated: 2020.11.30
- Phantom: Twin-SAM; Type: QD 000 P41 Ax; Serial: 2020
- Measurement SW: DASY52, Version 52.10 (4); SEMCAD X Version 14.6.14 (7483)

**Ch1413/Area Scan (71x81x1):** Interpolated grid: dx=1.500 mm, dy=1.500 mm  
Maximum value of SAR (interpolated) = 0.286 W/kg

**Ch1413/Zoom Scan (5x5x7)/Cube 0:** Measurement grid: dx=8mm, dy=8mm, dz=5mm  
Reference Value = 3.070 V/m; Power Drift = 0.01 dB  
Peak SAR (extrapolated) = 0.375 W/kg  
**SAR(1 g) = 0.212 W/kg; SAR(10 g) = 0.115 W/kg**  
Maximum value of SAR (measured) = 0.293 W/kg



## WCDMA Band IV\_RMC 12.2Kbps\_Top Side\_10mm\_Ch1413\_Ant 3

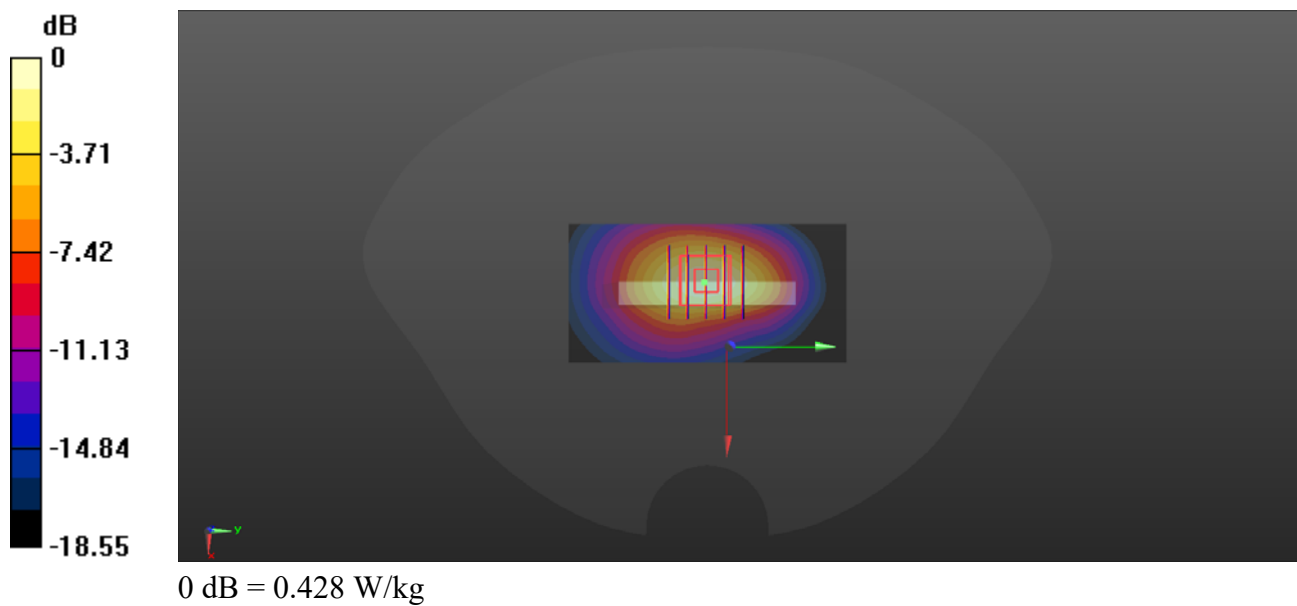
Communication System: UID 0, UMTS-FDD (0); Frequency: 1732.6 MHz; Duty Cycle: 1:1  
Medium: HSL\_1750 Medium parameters used:  $f = 1733$  MHz;  $\sigma = 1.412$  S/m;  $\epsilon_r = 39.814$ ;  $\rho = 1000$  kg/m<sup>3</sup>  
Ambient Temperature : 23.2 °C; Liquid Temperature : 22.1 °C

### DASY5 Configuration:

- Probe: EX3DV4 - SN7608; ConvF(8.32, 8.32, 8.32) @ 1732.6 MHz; Calibrated: 2020.11.27
- Sensor-Surface: 2mm (Mechanical Surface Detection)
- Electronics: DAE4 Sn1643; Calibrated: 2020.11.30
- Phantom: Twin-SAM; Type: QD 000 P41 Ax; Serial: 2020
- Measurement SW: DASY52, Version 52.10 (4); SEMCAD X Version 14.6.14 (7483)

**Ch1413/Area Scan (41x81x1):** Interpolated grid: dx=1.500 mm, dy=1.500 mm  
Maximum value of SAR (interpolated) = 0.432 W/kg

**Ch1413/Zoom Scan (5x5x7)/Cube 0:** Measurement grid: dx=8mm, dy=8mm, dz=5mm  
Reference Value = 14.60 V/m; Power Drift = -0.01 dB  
Peak SAR (extrapolated) = 0.540 W/kg  
**SAR(1 g) = 0.303 W/kg; SAR(10 g) = 0.161 W/kg**  
Maximum value of SAR (measured) = 0.428 W/kg



## WCDMA Band V\_RMC 12.2Kbps\_Back Side10mm\_Ch4233\_Ant 2

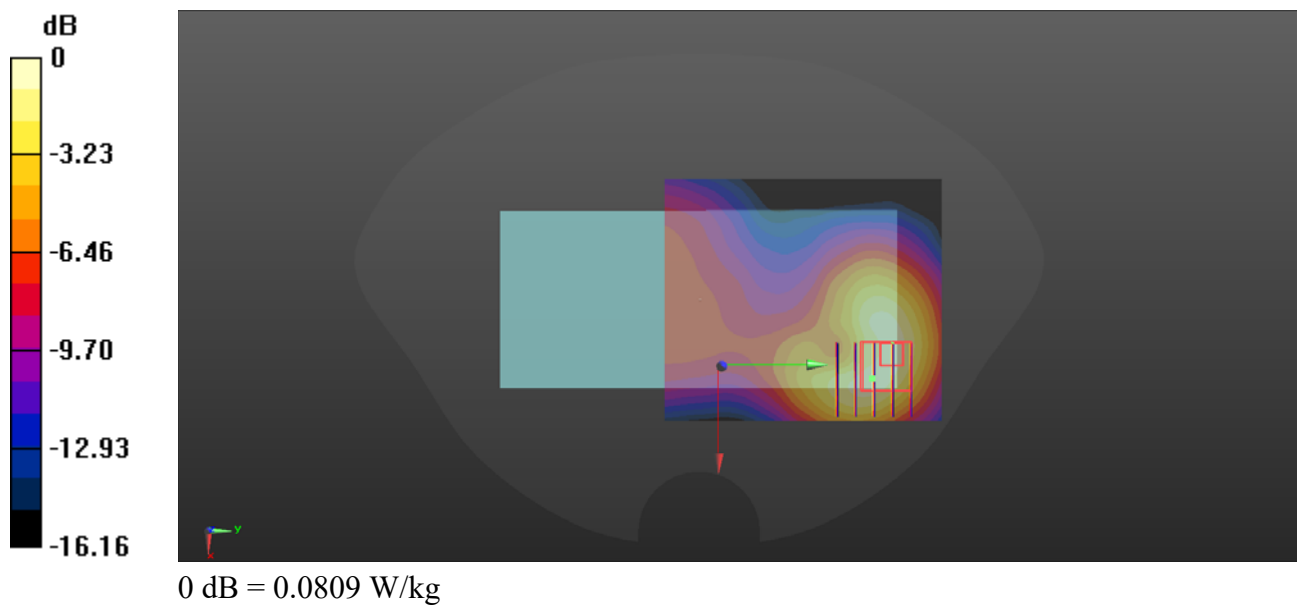
Communication System: UID 0, UMTS-FDD (0); Frequency: 846.6 MHz; Duty Cycle: 1:1  
Medium: HSL\_835 Medium parameters used:  $f = 847$  MHz;  $\sigma = 0.959$  S/m;  $\epsilon_r = 43.168$ ;  $\rho = 1000$  kg/m<sup>3</sup>  
Ambient Temperature : 23.2 °C; Liquid Temperature : 22.3 °C

### DASY5 Configuration:

- Probe: EX3DV4 - SN7608; ConvF(9.57, 9.57, 9.57) @ 846.6 MHz; Calibrated: 2020.11.27
- Sensor-Surface: 2mm (Mechanical Surface Detection)
- Electronics: DAE4 Sn1643; Calibrated: 2020.11.30
- Phantom: Twin-SAM; Type: QD 000 P41 Ax; Serial: 2020
- Measurement SW: DASY52, Version 52.10 (4); SEMCAD X Version 14.6.14 (7483)

**Ch4233/Area Scan (71x81x1):** Interpolated grid: dx=1.500 mm, dy=1.500 mm  
Maximum value of SAR (interpolated) = 0.0776 W/kg

**Ch4233/Zoom Scan (5x5x7)/Cube 0:** Measurement grid: dx=8mm, dy=8mm, dz=5mm  
Reference Value = 3.671 V/m; Power Drift = 0.05 dB  
Peak SAR (extrapolated) = 0.107 W/kg  
**SAR(1 g) = 0.057 W/kg; SAR(10 g) = 0.030 W/kg**  
Maximum value of SAR (measured) = 0.0809 W/kg



### LTE Band 2\_20MHz\_QPSK\_1RB\_0Offset\_Back Side\_10mm\_Ch18900\_Ant 3

Communication System: UID 0, LTE (0); Frequency: 1880 MHz; Duty Cycle: 1:1

Medium: HSL\_1900 Medium parameters used:  $f = 1880$  MHz;  $\sigma = 1.321$  S/m;  $\epsilon_r = 39.882$ ;  $\rho = 1000$  kg/m<sup>3</sup>

Ambient Temperature : 23.2 °C; Liquid Temperature : 22.1 °C

DASY5 Configuration:

- Probe: EX3DV4 - SN7608; ConvF(8.04, 8.04, 8.04) @ 1880 MHz; Calibrated: 2020.11.27
- Sensor-Surface: 2mm (Mechanical Surface Detection)
- Electronics: DAE4 Sn1643; Calibrated: 2020.11.30
- Phantom: Twin-SAM; Type: QD 000 P41 Ax; Serial: 2020
- Measurement SW: DASY52, Version 52.10 (4); SEMCAD X Version 14.6.14 (7483)

**Ch18900/Area Scan (71x81x1):** Interpolated grid: dx=1.500 mm, dy=1.500 mm

Maximum value of SAR (interpolated) = 0.0982 W/kg

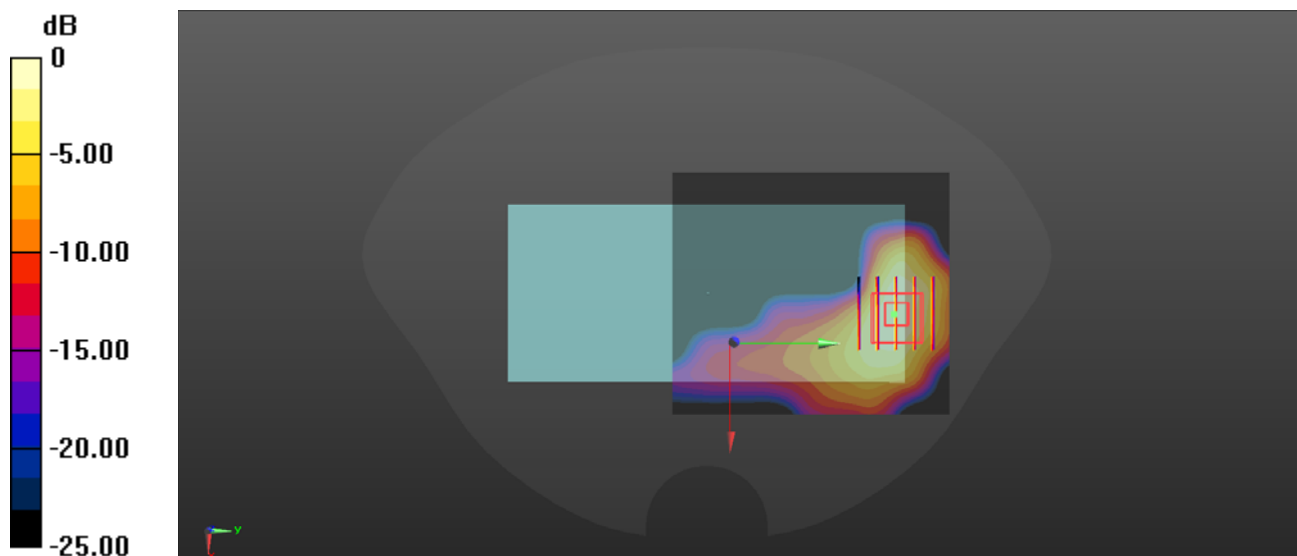
**Ch18900/Zoom Scan (5x5x7)/Cube 0:** Measurement grid: dx=8mm, dy=8mm, dz=5mm

Reference Value = 0 V/m; Power Drift = 0.02 dB

Peak SAR (extrapolated) = 0.118 W/kg

**SAR(1 g) = 0.062 W/kg; SAR(10 g) = 0.032 W/kg**

Maximum value of SAR (measured) = 0.0903 W/kg



0 dB = 0.0903 W/kg

## LTE Band 2\_20MHz\_QPSK\_1RB\_0Offset\_Top Side\_10mm\_Ch18900\_Ant 3

Communication System: UID 0, LTE (0); Frequency: 1880 MHz; Duty Cycle: 1:1

Medium: HSL\_1900 Medium parameters used:  $f = 1880$  MHz;  $\sigma = 1.321$  S/m;  $\epsilon_r = 39.882$ ;  $\rho = 1000$  kg/m<sup>3</sup>

Ambient Temperature : 23.2 °C; Liquid Temperature : 22.1 °C

DASY5 Configuration:

- Probe: EX3DV4 - SN7608; ConvF(8.04, 8.04, 8.04) @ 1880 MHz; Calibrated: 2020.11.27
- Sensor-Surface: 2mm (Mechanical Surface Detection)
- Electronics: DAE4 Sn1643; Calibrated: 2020.11.30
- Phantom: Twin-SAM; Type: QD 000 P41 Ax; Serial: 2020
- Measurement SW: DASY52, Version 52.10 (4); SEMCAD X Version 14.6.14 (7483)

**Ch18900/Area Scan (41x81x1):** Interpolated grid: dx=1.500 mm, dy=1.500 mm

Maximum value of SAR (interpolated) = 0.117 W/kg

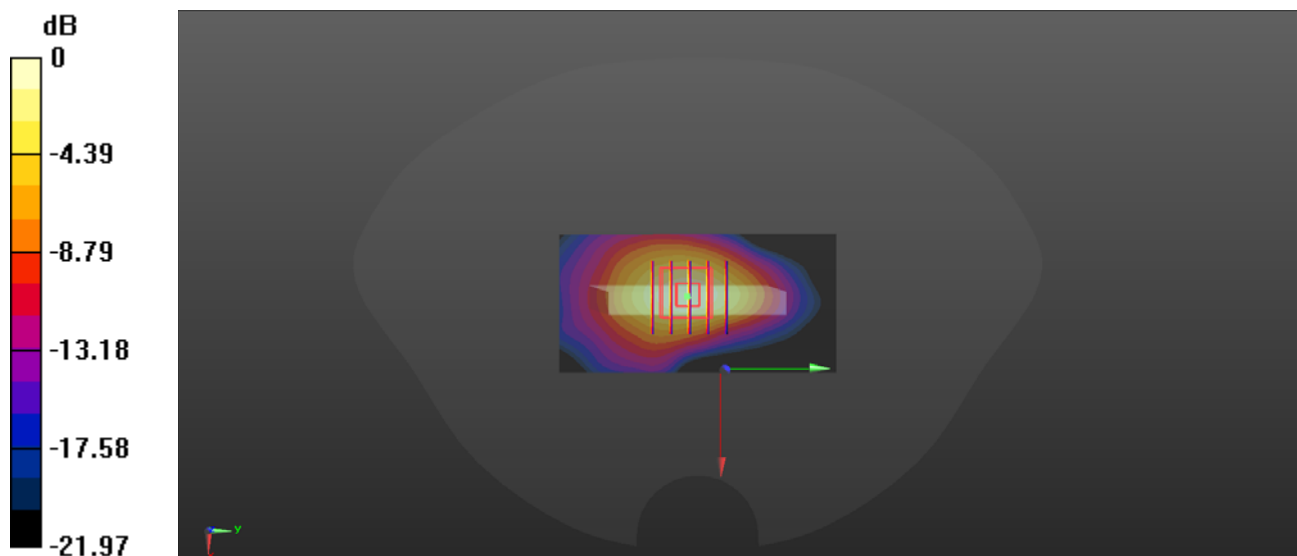
**Ch18900/Zoom Scan (5x5x7)/Cube 0:** Measurement grid: dx=8mm, dy=8mm, dz=5mm

Reference Value = 7.699 V/m; Power Drift = -0.07 dB

Peak SAR (extrapolated) = 0.144 W/kg

**SAR(1 g) = 0.077 W/kg; SAR(10 g) = 0.039 W/kg**

Maximum value of SAR (measured) = 0.111 W/kg



0 dB = 0.111 W/kg



## LTE Band 5\_10MHz\_QPSK\_1RB\_0Offset\_Back Side\_10mm\_Ch20525\_Ant 2

Communication System: UID 0, LTE (0); Frequency: 836.5 MHz; Duty Cycle: 1:1

Medium: HSL\_835 Medium parameters used:  $f = 836.5$  MHz;  $\sigma = 0.943$  S/m;  $\epsilon_r = 42.967$ ;  $\rho = 1000$  kg/m<sup>3</sup>

Ambient Temperature : 23.2 °C; Liquid Temperature : 22.3 °C

DASY5 Configuration:

- Probe: EX3DV4 - SN7608; ConvF(9.57, 9.57, 9.57) @ 836.5 MHz; Calibrated: 2020.11.27
- Sensor-Surface: 2mm (Mechanical Surface Detection)
- Electronics: DAE4 Sn1643; Calibrated: 2020.11.30
- Phantom: Twin-SAM; Type: QD 000 P41 Ax; Serial: 2020
- Measurement SW: DASY52, Version 52.10 (4); SEMCAD X Version 14.6.14 (7483)

**Ch20525/Area Scan (71x81x1):** Interpolated grid: dx=1.500 mm, dy=1.500 mm

Maximum value of SAR (interpolated) = 0.0700 W/kg

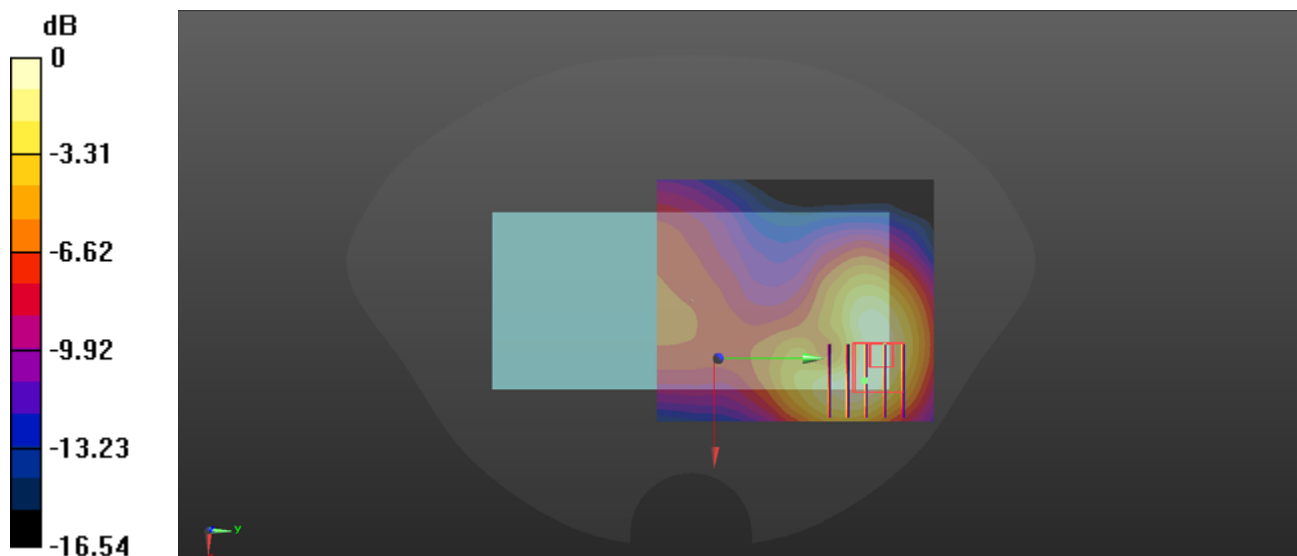
**Ch20525/Zoom Scan (5x5x7)/Cube 0:** Measurement grid: dx=8mm, dy=8mm, dz=5mm

Reference Value = 3.492 V/m; Power Drift = 0.02 dB

Peak SAR (extrapolated) = 0.0930 W/kg

**SAR(1 g) = 0.049 W/kg; SAR(10 g) = 0.026 W/kg**

Maximum value of SAR (measured) = 0.0686 W/kg



0 dB = 0.0686 W/kg

### LTE Band 5B\_10MHz\_QPSK\_1RB\_0Offset\_Back Side\_10mm\_Ch20525

Communication System: UID 0, LTE (0); Frequency: 836.5 MHz; Duty Cycle: 1:1

Medium: HSL\_835 Medium parameters used:  $f = 836.5$  MHz;  $\sigma = 0.943$  S/m;  $\epsilon_r = 42.967$ ;  $\rho = 1000$  kg/m<sup>3</sup>

Ambient Temperature : 23.2 °C; Liquid Temperature : 22.3 °C

#### DASY5 Configuration:

- Probe: EX3DV4 - SN7608; ConvF(9.57, 9.57, 9.57) @ 836.5 MHz; Calibrated: 2020.11.27;
- Sensor-Surface: 2mm (Mechanical Surface Detection)
- Electronics: DAE4 Sn1643; Calibrated: 2020.11.30
- Phantom: Twin-SAM; Type: QD 000 P41 Ax; Serial: 2020
- Measurement SW: DASY52, Version 52.8 (8); SEMCAD X Version 14.6.10 (7331)

**Ch20525/Area Scan (81x131x1):** Interpolated grid: dx=1.500 mm, dy=1.500 mm

Maximum value of SAR (interpolated) = 0.040 W/kg

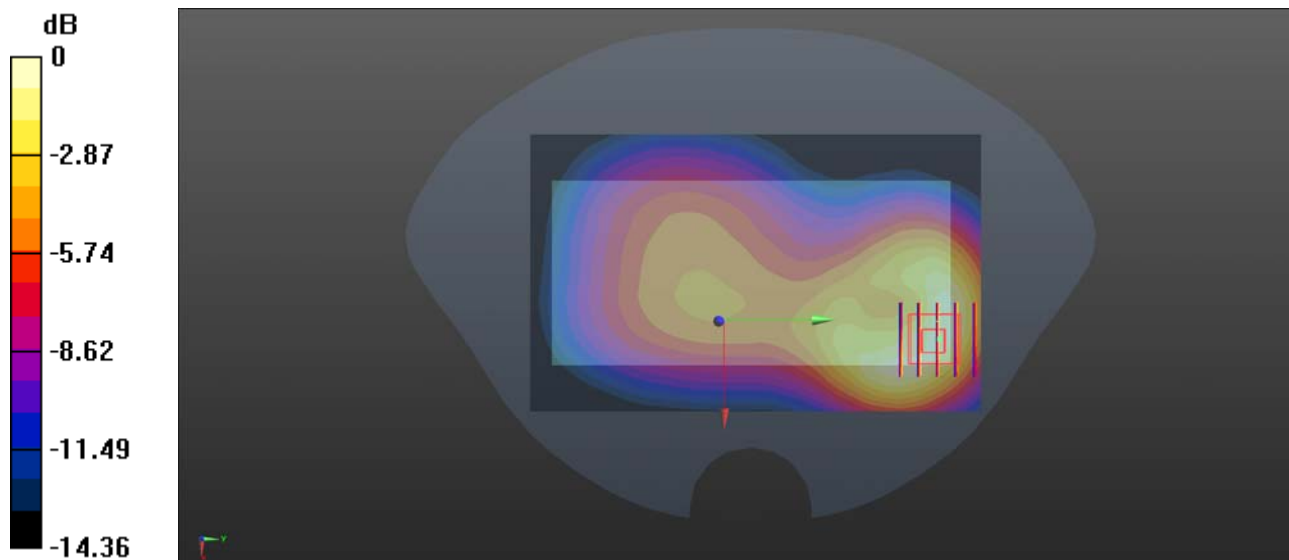
**Ch20525/Zoom Scan (5x5x7)/Cube 0:** Measurement grid: dx=8mm, dy=8mm, dz=5mm

Reference Value = 9.013 V/m; Power Drift = -0.12 dB

Peak SAR (extrapolated) = 0.397 W/kg

**SAR(1 g) = 0.027 W/kg; SAR(10 g) = 0.014 W/kg**

Maximum value of SAR (measured) = 0.050 W/kg



## LTE Band 12\_10MHz\_QPSK\_1RB\_0Offset\_Back Side\_10mm\_Ch23060\_Ant 2

Communication System: UID 0, LTE (0); Frequency: 704 MHz; Duty Cycle: 1:1

Medium: HSL\_750 Medium parameters used:  $f = 704$  MHz;  $\sigma = 0.917$  S/m;  $\epsilon_r = 42.279$ ;  $\rho = 1000$  kg/m<sup>3</sup>

Ambient Temperature : 23.2 °C; Liquid Temperature : 22.3 °C

DASY5 Configuration:

- Probe: EX3DV4 - SN7608; ConvF(9.76, 9.76, 9.76) @ 704 MHz; Calibrated: 2020.11.27
- Sensor-Surface: 2mm (Mechanical Surface Detection)
- Electronics: DAE4 Sn1643; Calibrated: 2020.11.30
- Phantom: Twin-SAM; Type: QD 000 P41 Ax; Serial: 2020
- Measurement SW: DASY52, Version 52.10 (4); SEMCAD X Version 14.6.14 (7483)

**Ch23060/Area Scan (71x81x1):** Interpolated grid: dx=1.500 mm, dy=1.500 mm

Maximum value of SAR (interpolated) = 0.115 W/kg

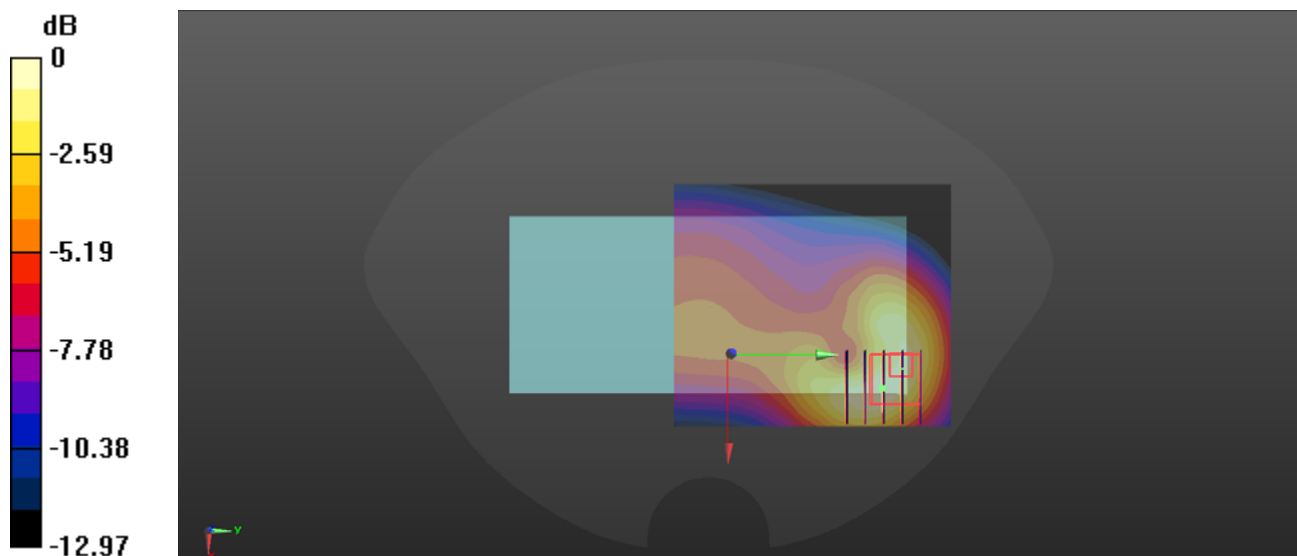
**Ch23060/Zoom Scan (5x5x7)/Cube 0:** Measurement grid: dx=8mm, dy=8mm, dz=5mm

Reference Value = 5.911 V/m; Power Drift = -0.07 dB

Peak SAR (extrapolated) = 0.152 W/kg

**SAR(1 g) = 0.079 W/kg; SAR(10 g) = 0.043 W/kg**

Maximum value of SAR (measured) = 0.114 W/kg



0 dB = 0.114 W/kg

## LTE Band 13\_10MHz\_QPSK\_1RB\_0Offset\_Back Side\_10mm\_Ch23230\_Ant 2

Communication System: UID 0, LTE (0); Frequency: 782 MHz; Duty Cycle: 1:1

Medium: HSL\_750 Medium parameters used:  $f = 782 \text{ MHz}$ ;  $\sigma = 0.885 \text{ S/m}$ ;  $\epsilon_r = 43.316$ ;  $\rho = 1000 \text{ kg/m}^3$

Ambient Temperature :  $23.2 \text{ }^\circ\text{C}$ ; Liquid Temperature :  $22.3 \text{ }^\circ\text{C}$

DASY5 Configuration:

- Probe: EX3DV4 - SN7608; ConvF(9.76, 9.76, 9.76) @ 782 MHz; Calibrated: 2020.11.27
- Sensor-Surface: 2mm (Mechanical Surface Detection)
- Electronics: DAE4 Sn1643; Calibrated: 2020.11.30
- Phantom: Twin-SAM; Type: QD 000 P41 Ax; Serial: 2020
- Measurement SW: DASY52, Version 52.10 (4); SEMCAD X Version 14.6.14 (7483)

**Ch23230/Area Scan (71x81x1):** Interpolated grid:  $dx=1.500 \text{ mm}$ ,  $dy=1.500 \text{ mm}$

Maximum value of SAR (interpolated) =  $0.193 \text{ W/kg}$

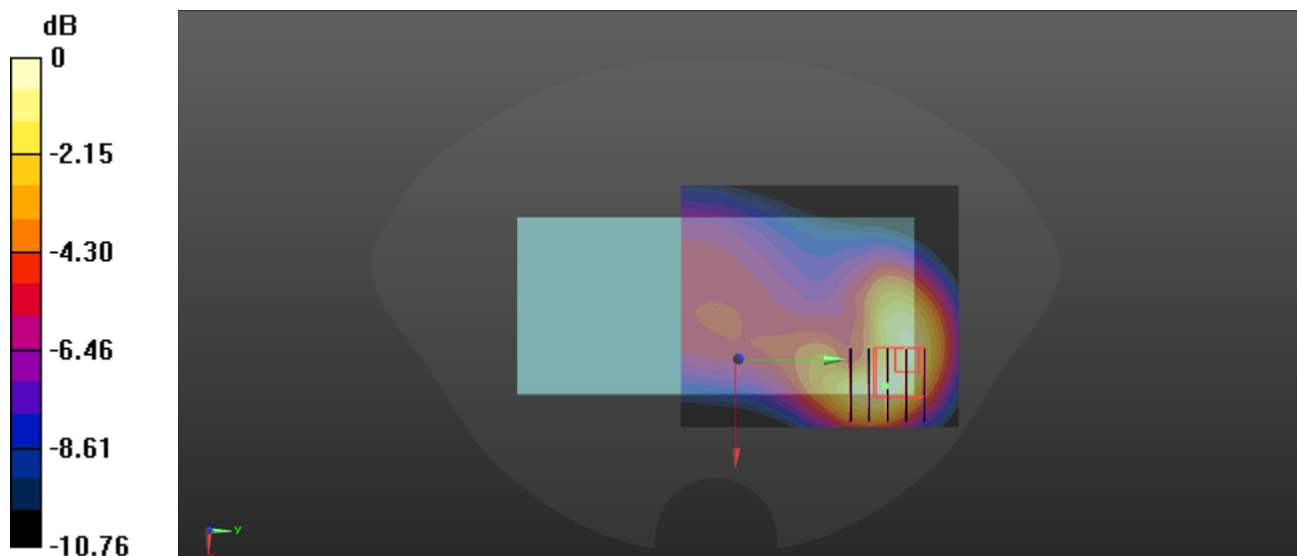
**Ch23230/Zoom Scan (5x5x7)/Cube 0:** Measurement grid:  $dx=8\text{mm}$ ,  $dy=8\text{mm}$ ,  $dz=5\text{mm}$

Reference Value =  $7.981 \text{ V/m}$ ; Power Drift =  $0.09 \text{ dB}$

Peak SAR (extrapolated) =  $0.263 \text{ W/kg}$

**SAR(1 g) =  $0.137 \text{ W/kg}$ ; SAR(10 g) =  $0.074 \text{ W/kg}$**

Maximum value of SAR (measured) =  $0.195 \text{ W/kg}$



0 dB =  $0.195 \text{ W/kg}$

### LTE Band 66\_20MHz\_QPSK\_1RB\_0Offset\_Back Side\_10mm\_Ch132322\_Ant 3

Communication System: UID 0, LTE (0); Frequency: 1745 MHz; Duty Cycle: 1:1

Medium: HSL\_1750 Medium parameters used:  $f = 1745$  MHz;  $\sigma = 1.438$  S/m;  $\epsilon_r = 39.567$ ;  $\rho = 1000$  kg/m<sup>3</sup>

Ambient Temperature : 23.2 °C; Liquid Temperature : 22.1 °C

DASY5 Configuration:

- Probe: EX3DV4 - SN7608; ConvF(8.32, 8.32, 8.32) @ 1745 MHz; Calibrated: 2020.11.27
- Sensor-Surface: 2mm (Mechanical Surface Detection)
- Electronics: DAE4 Sn1643; Calibrated: 2020.11.30
- Phantom: Twin-SAM; Type: QD 000 P41 Ax; Serial: 2020
- Measurement SW: DASY52, Version 52.10 (4); SEMCAD X Version 14.6.14 (7483)

**Ch132322/Area Scan (71x81x1):** Interpolated grid: dx=1.500 mm, dy=1.500 mm

Maximum value of SAR (interpolated) = 0.0402 W/kg

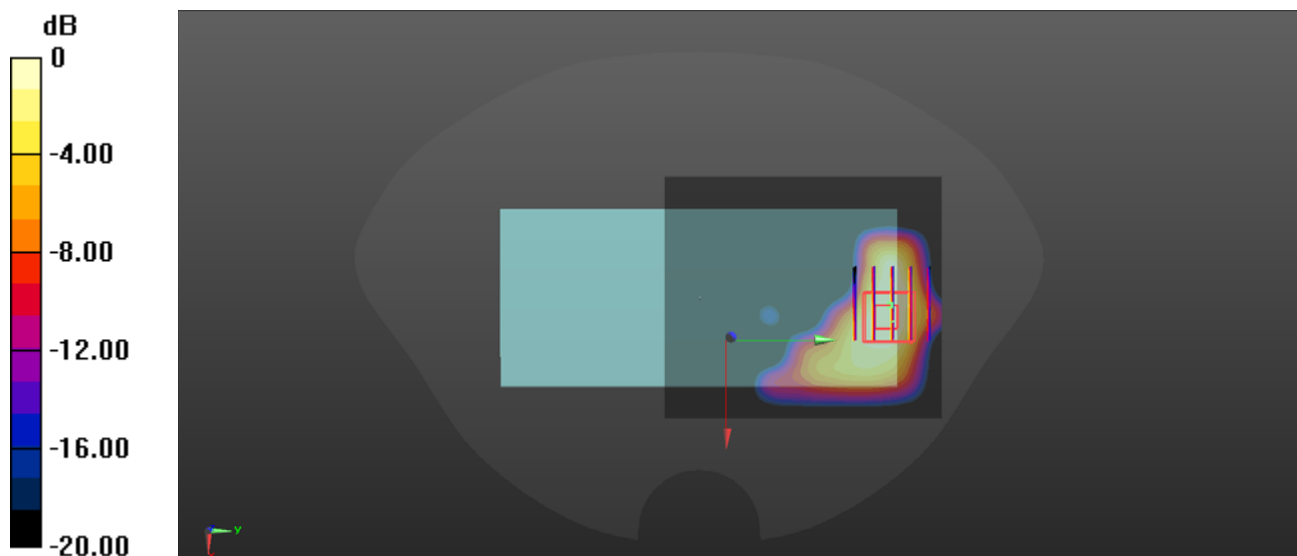
**Ch132322/Zoom Scan (5x5x7)/Cube 0:** Measurement grid: dx=8mm, dy=8mm, dz=5mm

Reference Value = 0 V/m; Power Drift = 0.07 dB

Peak SAR (extrapolated) = 0.0400 W/kg

**SAR(1 g) = 0.021 W/kg; SAR(10 g) = 0.010 W/kg**

Maximum value of SAR (measured) = 0.0284 W/kg



0 dB = 0.0284 W/kg

### LTE Band 66\_20MHz\_QPSK\_1RB\_0Offset\_Top Side\_10mm\_Ch132322\_Ant 3

Communication System: UID 0, LTE (0); Frequency: 1745 MHz; Duty Cycle: 1:1

Medium: HSL\_1750 Medium parameters used:  $f = 1745$  MHz;  $\sigma = 1.438$  S/m;  $\epsilon_r = 39.567$ ;  $\rho = 1000$  kg/m<sup>3</sup>

Ambient Temperature : 23.2 °C; Liquid Temperature : 22.1 °C

DASY5 Configuration:

- Probe: EX3DV4 - SN7608; ConvF(8.32, 8.32, 8.32) @ 1745 MHz; Calibrated: 2020.11.27
- Sensor-Surface: 2mm (Mechanical Surface Detection)
- Electronics: DAE4 Sn1643; Calibrated: 2020.11.30
- Phantom: Twin-SAM; Type: QD 000 P41 Ax; Serial: 2020
- Measurement SW: DASY52, Version 52.10 (4); SEMCAD X Version 14.6.14 (7483)

**Ch132322/Area Scan (41x81x1):** Interpolated grid: dx=1.500 mm, dy=1.500 mm

Maximum value of SAR (interpolated) = 0.0500 W/kg

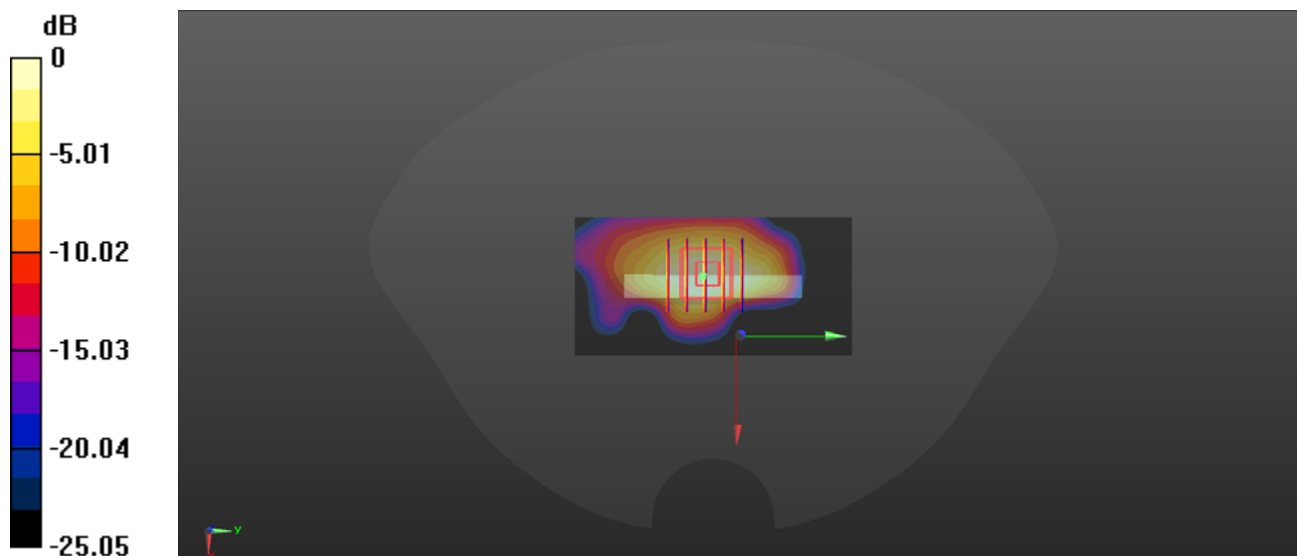
**Ch132322/Zoom Scan (5x5x7)/Cube 0:** Measurement grid: dx=8mm, dy=8mm, dz=5mm

Reference Value = 4.204 V/m; Power Drift = 0.08 dB

Peak SAR (extrapolated) = 0.0520 W/kg

**SAR(1 g) = 0.028 W/kg; SAR(10 g) = 0.014 W/kg**

Maximum value of SAR (measured) = 0.0401 W/kg



0 dB = 0.0401 W/kg

### LTE Band 66C\_20MHz\_QPSK\_1RB\_0Offset\_Top Side\_10mm\_Ch132072\_Ant 3

Communication System: UID 0, LTE (0); Frequency: 1720 MHz; Duty Cycle: 1:1

Medium: HSL\_1750 Medium parameters used:  $f = 1720$  MHz;  $\sigma = 1.394$  S/m;  $\epsilon_r = 39.868$ ;  $\rho = 1000$  kg/m<sup>3</sup>

Ambient Temperature : 23.2 °C; Liquid Temperature : 22.1 °C

DASY5 Configuration:

- Probe: EX3DV4 - SN7608; ConvF(8.32, 8.32, 8.32) @ 1720 MHz; Calibrated: 2020.11.27
- Sensor-Surface: 2mm (Mechanical Surface Detection)
- Electronics: DAE4 Sn1643; Calibrated: 2020.11.30
- Phantom: Twin-SAM; Type: QD 000 P41 Ax; Serial: 2020
- Measurement SW: DASY52, Version 52.10 (4); SEMCAD X Version 14.6.14 (7483)

**Ch132072/Area Scan (41x81x1):** Interpolated grid: dx=1.500 mm, dy=1.500 mm

Maximum value of SAR (interpolated) = 0.0300 W/kg

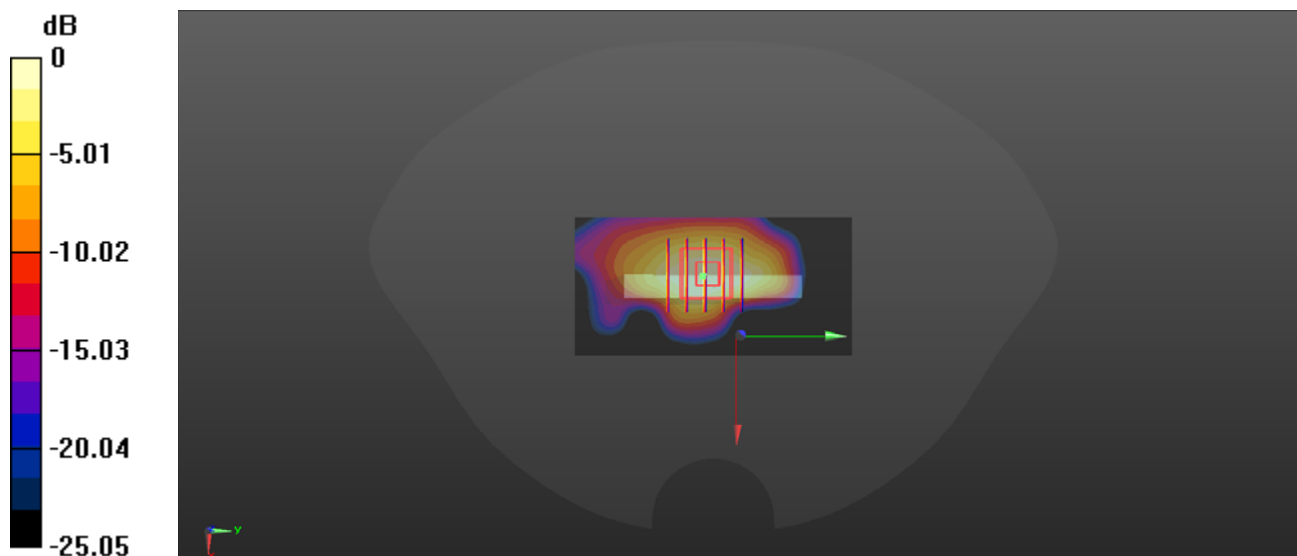
**Ch132072/Zoom Scan (5x5x7)/Cube 0:** Measurement grid: dx=8mm, dy=8mm, dz=5mm

Reference Value = 4.204 V/m; Power Drift = 0.01 dB

Peak SAR (extrapolated) = 0.0430 W/kg

**SAR(1 g) = 0.022 W/kg; SAR(10 g) = 0.011 W/kg**

Maximum value of SAR (measured) = 0.0401 W/kg



0 dB = 0.0301 W/kg

### 5G NR n2\_20MHz\_DFT-S-QPSK\_1RB\_1Offset\_Back Side\_10mm\_Ch376000\_Ant 3

Communication System: UID 0, 5G NR (0); Frequency: 1880 MHz; Duty Cycle: 1:1

Medium: HSL\_1900 Medium parameters used:  $f = 1880$  MHz;  $\sigma = 1.321$  S/m;  $\epsilon_r = 39.882$ ;  $\rho = 1000$  kg/m<sup>3</sup>

Ambient Temperature : 23.2 °C; Liquid Temperature : 22.1 °C

DASY5 Configuration:

- Probe: EX3DV4 - SN7608; ConvF(8.04, 8.04, 8.04) @ 1880 MHz; Calibrated: 2020.11.27
- Sensor-Surface: 2mm (Mechanical Surface Detection)
- Electronics: DAE4 Sn1643; Calibrated: 2020.11.30
- Phantom: Twin-SAM; Type: QD 000 P41 Ax; Serial: 2020
- Measurement SW: DASY52, Version 52.10 (4); SEMCAD X Version 14.6.14 (7483)

**Ch376000/Area Scan (71x81x1):** Interpolated grid: dx=1.500 mm, dy=1.500 mm

Maximum value of SAR (interpolated) = 0.262 W/kg

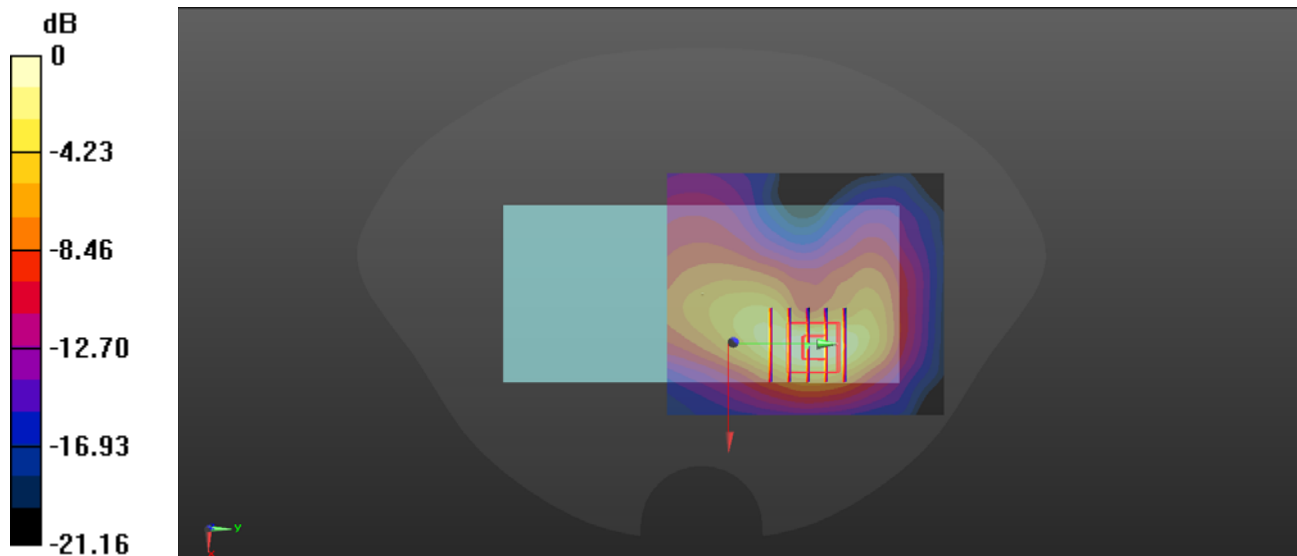
**Ch376000/Zoom Scan (5x5x7)/Cube 0:** Measurement grid: dx=8mm, dy=8mm, dz=5mm

Reference Value = 6.060 V/m; Power Drift = -0.03 dB

Peak SAR (extrapolated) = 0.341 W/kg

**SAR(1 g) = 0.181 W/kg; SAR(10 g) = 0.089 W/kg**

Maximum value of SAR (measured) = 0.258 W/kg



0 dB = 0.258 W/kg



## 5G NR n5\_20MHz\_DFT-S-QPSK\_1RB\_1Offset\_Back Side\_10mm\_Ch167800\_Ant 2

Communication System: UID 0, 5G NR (0); Frequency: 839 MHz; Duty Cycle: 1:1

Medium: HSL\_835 Medium parameters used:  $f = 839$  MHz;  $\sigma = 0.948$  S/m;  $\epsilon_r = 43.016$ ;  $\rho = 1000$  kg/m<sup>3</sup>

Ambient Temperature : 23.2 °C; Liquid Temperature : 22.3 °C

DASY5 Configuration:

- Probe: EX3DV4 - SN7608; ConvF(9.57, 9.57, 9.57) @ 839 MHz; Calibrated: 2020.11.27
- Sensor-Surface: 2mm (Mechanical Surface Detection)
- Electronics: DAE4 Sn1643; Calibrated: 2020.11.30
- Phantom: Twin-SAM; Type: QD 000 P41 Ax; Serial: 2020
- Measurement SW: DASY52, Version 52.10 (4); SEMCAD X Version 14.6.14 (7483)

**Ch167800/Area Scan (71x91x1):** Interpolated grid: dx=1.500 mm, dy=1.500 mm

Maximum value of SAR (interpolated) = 0.115 W/kg

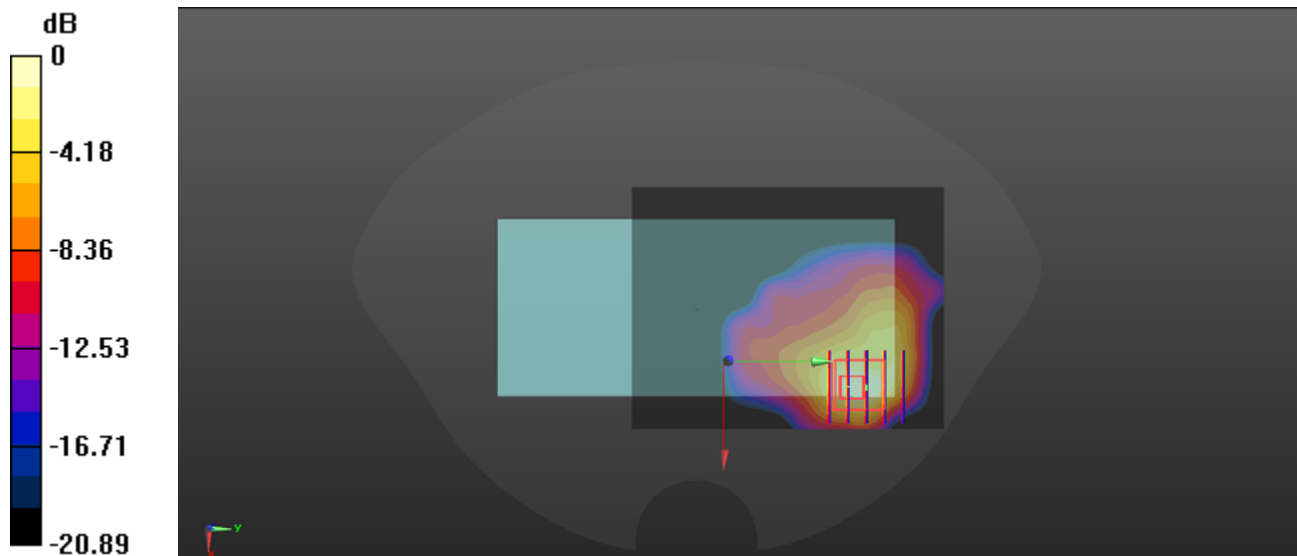
**Ch167800/Zoom Scan (5x5x7)/Cube 0:** Measurement grid: dx=8mm, dy=8mm, dz=5mm

Reference Value = 1.196 V/m; Power Drift = 0.02 dB

Peak SAR (extrapolated) = 0.166 W/kg

**SAR(1 g) = 0.149 W/kg; SAR(10 g) = 0.077 W/kg**

Maximum value of SAR (measured) = 0.109 W/kg



0 dB = 0.109 W/kg

### 5G NR n66\_20MHz\_DFT-S-QPSK\_1RB\_1Offset\_Back Side\_10mm\_Ch349000\_Ant 3

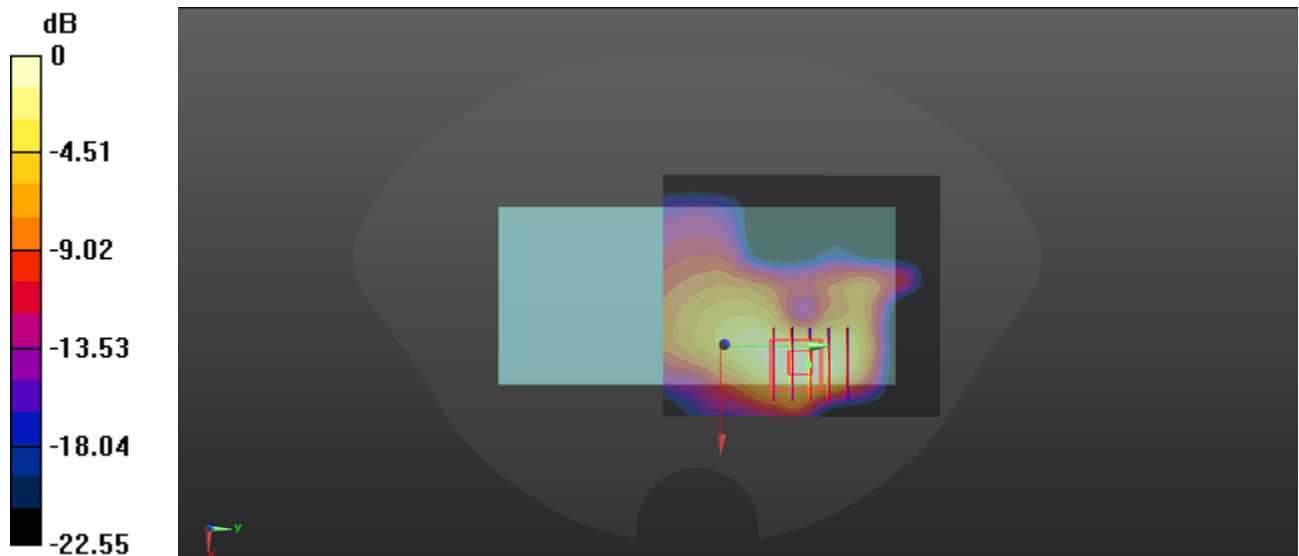
Communication System: UID 0, 5G NR (0); Frequency: 1745 MHz; Duty Cycle: 1:1  
Medium: HSL\_1750 Medium parameters used:  $f = 1745$  MHz;  $\sigma = 1.438$  S/m;  $\epsilon_r = 39.567$ ;  $\rho = 1000$  kg/m<sup>3</sup>  
Ambient Temperature : 23.2 °C; Liquid Temperature : 22.1 °C

#### DASY5 Configuration:

- Probe: EX3DV4 - SN7608; ConvF(8.32, 8.32, 8.32) @ 1745 MHz; Calibrated: 2020.11.27
- Sensor-Surface: 2mm (Mechanical Surface Detection)
- Electronics: DAE4 Sn1643; Calibrated: 2020.11.30
- Phantom: Twin-SAM; Type: QD 000 P41 Ax; Serial: 2020
- Measurement SW: DASY52, Version 52.10 (4); SEMCAD X Version 14.6.14 (7483)

**Ch349000/Area Scan (71x81x1):** Interpolated grid: dx=1.500 mm, dy=1.500 mm  
Maximum value of SAR (interpolated) = 0.106 W/kg

**Ch349000/Zoom Scan (5x5x7)/Cube 0:** Measurement grid: dx=8mm, dy=8mm, dz=5mm  
Reference Value = 3.328 V/m; Power Drift = 0.01 dB  
Peak SAR (extrapolated) = 0.148 W/kg  
**SAR(1 g) = 0.078 W/kg; SAR(10 g) = 0.038 W/kg**  
Maximum value of SAR (measured) = 0.109 W/kg



0 dB = 0.109 W/kg

### 5G NR n66\_20MHz\_DFT-S-QPSK\_1RB\_1Offset\_Left Side\_10mm\_Ch349000\_Ant 3

Communication System: UID 0, 5G NR (0); Frequency: 1745 MHz; Duty Cycle: 1:1

Medium: HSL\_1750 Medium parameters used:  $f = 1745$  MHz;  $\sigma = 1.438$  S/m;  $\epsilon_r = 39.567$ ;  $\rho = 1000$  kg/m<sup>3</sup>

Ambient Temperature : 23.2 °C; Liquid Temperature : 22.1 °C

DASY5 Configuration:

- Probe: EX3DV4 - SN7608; ConvF(8.32, 8.32, 8.32) @ 1745 MHz; Calibrated: 2020.11.27
- Sensor-Surface: 2mm (Mechanical Surface Detection)
- Electronics: DAE4 Sn1643; Calibrated: 2020.11.30
- Phantom: Twin-SAM; Type: QD 000 P41 Ax; Serial: 2020
- Measurement SW: DASY52, Version 52.10 (4); SEMCAD X Version 14.6.14 (7483)

**Ch349000/Area Scan (41x91x1):** Interpolated grid: dx=1.500 mm, dy=1.500 mm

Maximum value of SAR (interpolated) = 0.127 W/kg

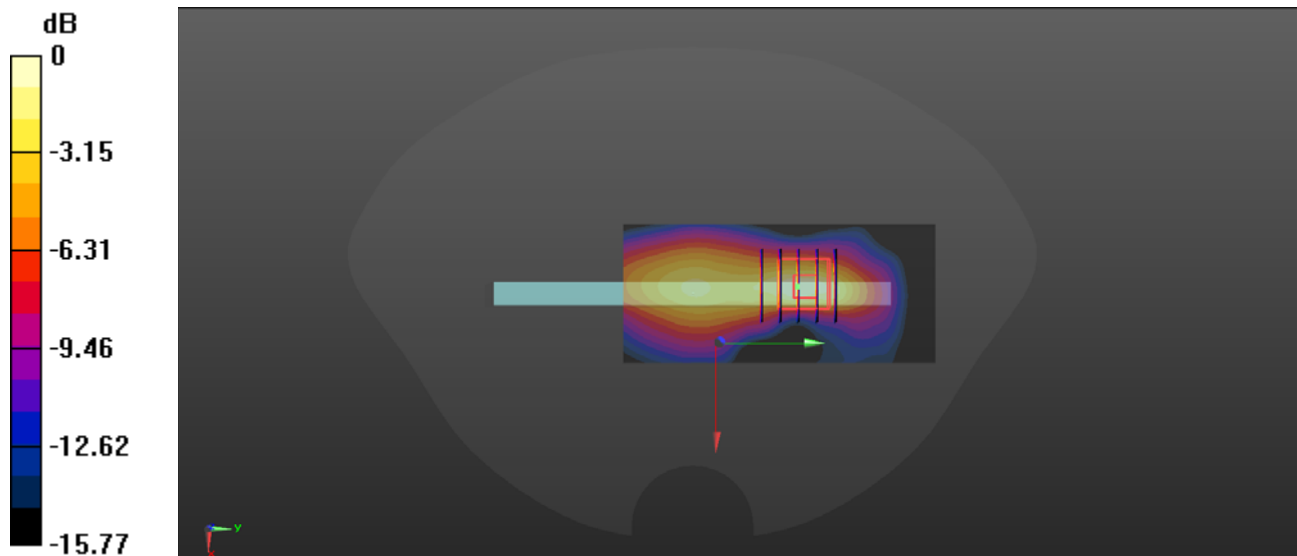
**Ch349000/Zoom Scan (5x5x7)/Cube 0:** Measurement grid: dx=8mm, dy=8mm, dz=5mm

Reference Value = 6.691 V/m; Power Drift = 0.03 dB

Peak SAR (extrapolated) = 0.169 W/kg

**SAR(1 g) = 0.086 W/kg; SAR(10 g) = 0.040 W/kg**

Maximum value of SAR (measured) = 0.126 W/kg



0 dB = 0.126 W/kg

### 5G NR n77\_100MHz\_DFT-S-QPSK\_1RB\_1Offset\_Back Side\_10mm\_Ch654800\_Ant 3

Communication System: UID 0, 5G NR (0); Frequency: 3822 MHz; Duty Cycle: 1:1

Medium: HSL\_3700 Medium parameters used:  $f = 3822$  MHz;  $\sigma = 3.221$  S/m;  $\epsilon_r = 39.371$ ;  $\rho = 1000$  kg/m<sup>3</sup>

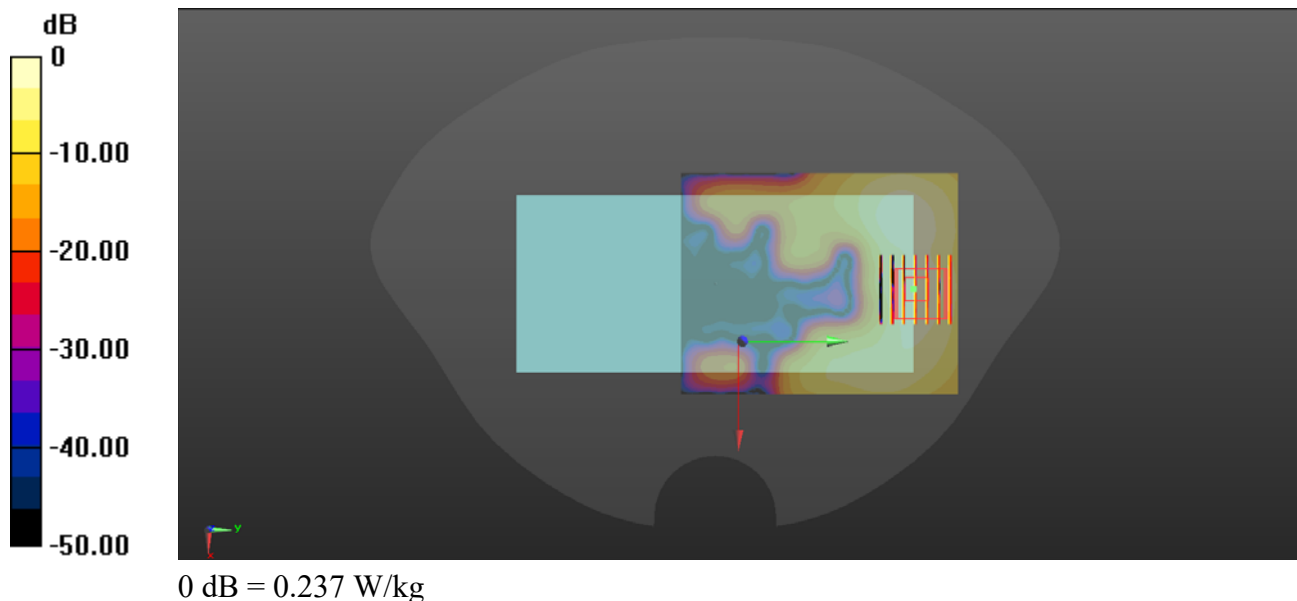
Ambient Temperature : 23.2 °C; Liquid Temperature : 22.3 °C

DASY5 Configuration:

- Probe: EX3DV4 - SN7608; ConvF(6.12, 6.12, 6.12) @ 3822 MHz; Calibrated: 2020.11.27
- Sensor-Surface: 2mm (Mechanical Surface Detection)
- Electronics: DAE4 Sn1643; Calibrated: 2020.11.30
- Phantom: Twin-SAM; Type: QD 000 P41 Ax; Serial: 2020
- Measurement SW: DASY52, Version 52.10 (4); SEMCAD X Version 14.6.14 (7483)

**Ch654800/Area Scan (81x101x1):** Interpolated grid: dx=1.200 mm, dy=1.200 mm  
Maximum value of SAR (interpolated) = 0.238 W/kg

**Ch654800/Zoom Scan (7x7x7)/Cube 0:** Measurement grid: dx=5mm, dy=5mm, dz=5mm  
Reference Value = 0 V/m; Power Drift = 999.00 dB  
Peak SAR (extrapolated) = 0.337 W/kg  
**SAR(1 g) = 0.148 W/kg; SAR(10 g) = 0.056 W/kg**  
Smallest distance from peaks to all points 3 dB below = 8.9 mm  
Ratio of SAR at M2 to SAR at M1 = 37.9%  
Maximum value of SAR (measured) = 0.237 W/kg



### 5G NR n77\_100MHz\_DFT-S-QPSK\_1RB\_1Offset\_Top Side\_10mm\_Ch650000\_Ant 3

Communication System: UID 0, 5G NR (0); Frequency: 3750 MHz; Duty Cycle: 1:1

Medium: HSL\_3700 Medium parameters used:  $f = 3750$  MHz;  $\sigma = 3.276$  S/m;  $\epsilon_r = 39.585$ ;  $\rho = 1000$  kg/m<sup>3</sup>

Ambient Temperature : 23.2 °C; Liquid Temperature : 22.3 °C

DASY5 Configuration:

- Probe: EX3DV4 - SN7608; ConvF(6.36, 6.36, 6.36) @ 3750 MHz; Calibrated: 2020.11.27
- Sensor-Surface: 2mm (Mechanical Surface Detection)
- Electronics: DAE4 Sn1643; Calibrated: 2020.11.30
- Phantom: Twin-SAM; Type: QD 000 P41 Ax; Serial: 2020
- Measurement SW: DASY52, Version 52.10 (4); SEMCAD X Version 14.6.14 (7483)

**Ch650000/Area Scan (41x91x1):** Interpolated grid: dx=1.200 mm, dy=1.200 mm

Maximum value of SAR (interpolated) = 0.519 W/kg

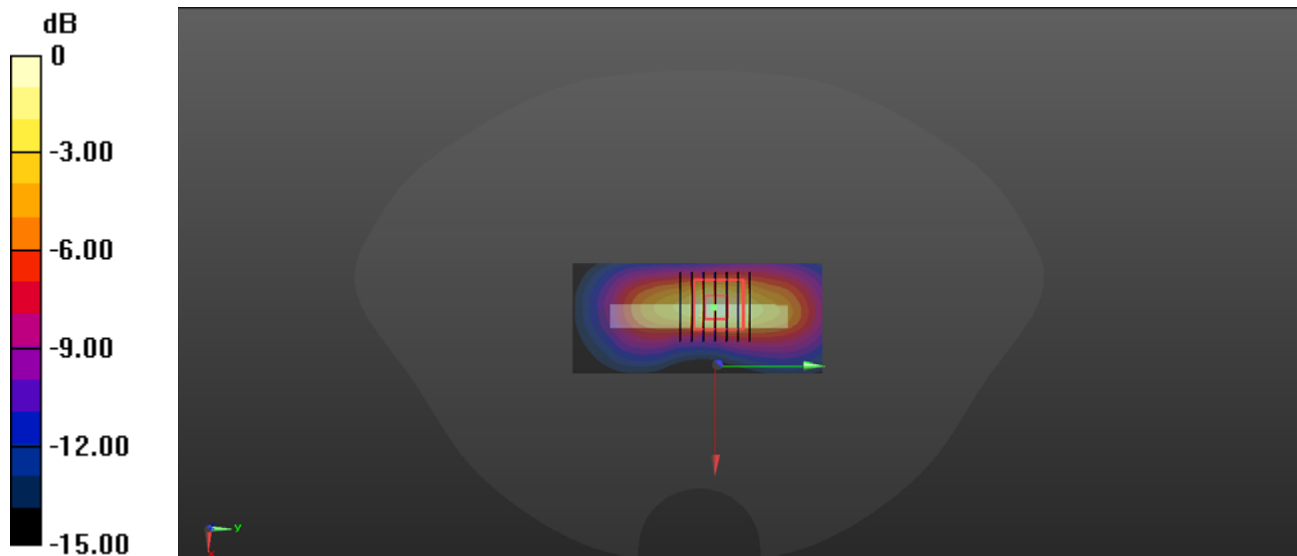
**Ch650000/Zoom Scan (7x7x7)/Cube 0:** Measurement grid: dx=5mm, dy=5mm, dz=5mm

Reference Value = 8.638 V/m; Power Drift = 0.02 dB

Peak SAR (extrapolated) = 0.798 W/kg

**SAR(1 g) = 0.301 W/kg; SAR(10 g) = 0.112 W/kg**

Maximum value of SAR (measured) = 0.524 W/kg



0 dB = 0.524 W/kg

## WLAN 2.4GHz\_802.11b 1Mbps\_Back Side\_10mm\_Ch1\_Ant 9

Communication System: UID 0, WLAN 2.4GHz 802.11b (0); Frequency: 2412 MHz; Duty Cycle: 1:1  
Medium: HSL\_2450 Medium parameters used:  $f = 2412$  MHz;  $\sigma = 1.762$  S/m;  $\epsilon_r = 38.862$ ;  $\rho = 1000$  kg/m<sup>3</sup>

Ambient Temperature : 23.2 °C; Liquid Temperature : 22.4 °C

### DASY5 Configuration:

- Probe: EX3DV4 - SN7608; ConvF(7.58, 7.58, 7.58) @ 2412 MHz; Calibrated: 2020.11.27
- Sensor-Surface: 2mm (Mechanical Surface Detection)
- Electronics: DAE4 Sn1643; Calibrated: 2020.11.30
- Phantom: Twin-SAM; Type: QD 000 P41 Ax; Serial: 2020
- Measurement SW: DASY52, Version 52.10 (4); SEMCAD X Version 14.6.14 (7483)

**Ch1/Area Scan (81x101x1):** Interpolated grid: dx=1.200 mm, dy=1.200 mm

Maximum value of SAR (interpolated) = 2.68 W/kg

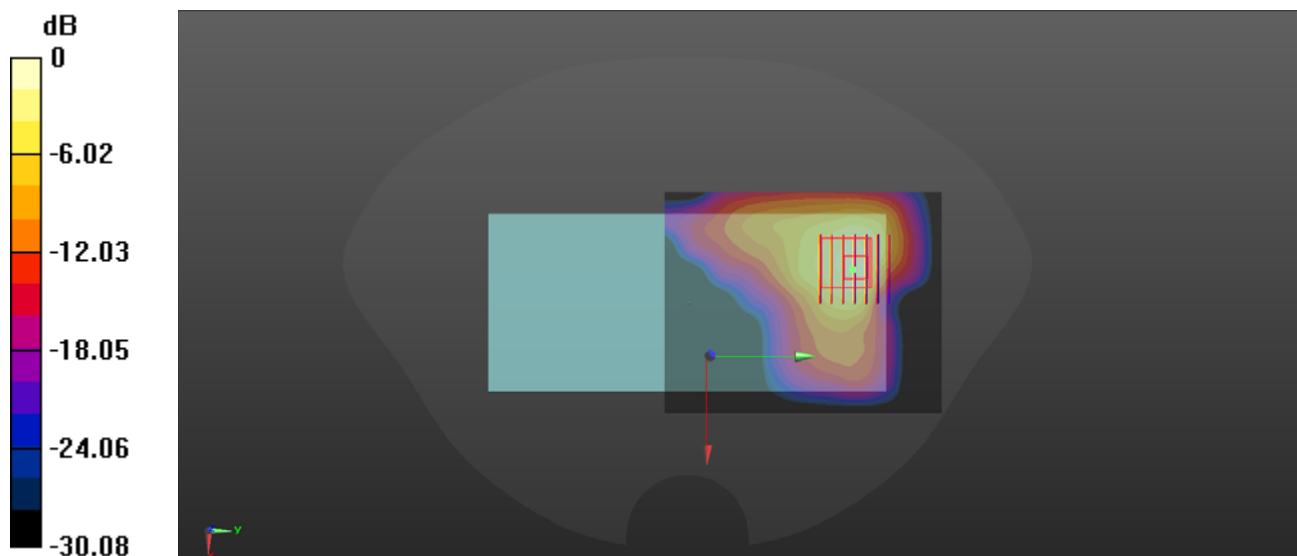
**Ch1/Zoom Scan (7x7x7)/Cube 0:** Measurement grid: dx=5mm, dy=5mm, dz=5mm

Reference Value = 0 V/m; Power Drift = 0.03 dB

Peak SAR (extrapolated) = 4.43 W/kg

**SAR(1 g) = 0.122 W/kg; SAR(10 g) = 0.066 W/kg**

Maximum value of SAR (measured) = 2.19 W/kg



0 dB = 2.19 W/kg

## WLAN 5.2GHz\_802.11a 6Mbps\_Back Side\_10mm\_Ch44\_Ant 6

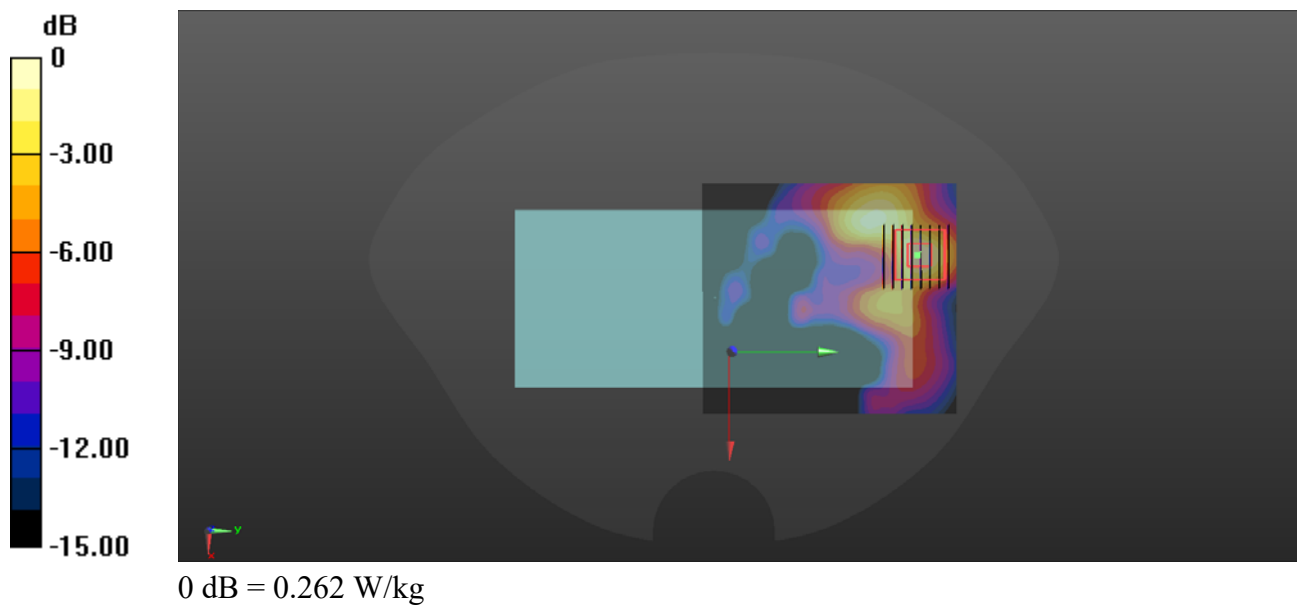
Communication System: UID 0, WLAN 5GHz (0); Frequency: 5220 MHz; Duty Cycle: 1:1  
Medium: HSL\_5250 Medium parameters used:  $f = 5220$  MHz;  $\sigma = 4.667$  S/m;  $\epsilon_r = 36.107$ ;  $\rho = 1000$  kg/m<sup>3</sup>  
Ambient Temperature : 23.2 °C; Liquid Temperature : 22.1 °C

### DASY5 Configuration:

- Probe: EX3DV4 - SN7608; ConvF(5.36, 5.36, 5.36) @ 5220 MHz; Calibrated: 2020.11.27
- Sensor-Surface: 2mm (Mechanical Surface Detection)
- Electronics: DAE4 Sn1643; Calibrated: 2020.11.30
- Phantom: Twin-SAM; Type: QD 000 P41 Ax; Serial: 2020
- Measurement SW: DASY52, Version 52.10 (4); SEMCAD X Version 14.6.14 (7483)

**Ch44/Area Scan (101x111x1):** Interpolated grid: dx=1.000 mm, dy=1.000 mm  
Maximum value of SAR (interpolated) = 0.259 W/kg

**Ch44/Zoom Scan (8x8x15)/Cube 0:** Measurement grid: dx=4mm, dy=4mm, dz=2mm  
Reference Value = 0 V/m; Power Drift = 0.03 dB  
Peak SAR (extrapolated) = 0.506 W/kg  
**SAR(1 g) = 0.136 W/kg; SAR(10 g) = 0.044 W/kg**  
Maximum value of SAR (measured) = 0.262 W/kg



## WLAN 5.2GHz\_802.11a 6Mbps\_Top Side\_10mm\_Ch44\_Ant 6

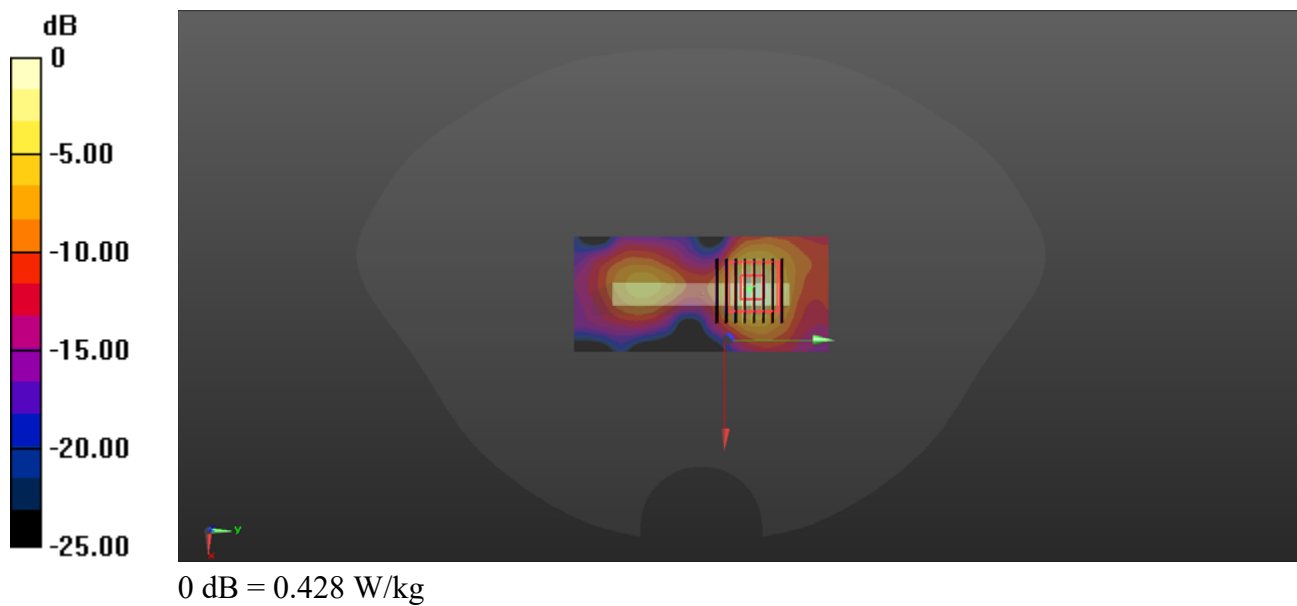
Communication System: UID 0, WLAN 5GHz (0); Frequency: 5220 MHz;Duty Cycle: 1:1  
Medium: HSL\_5250 Medium parameters used:  $f = 5220$  MHz;  $\sigma = 4.667$  S/m;  $\epsilon_r = 36.107$ ;  $\rho = 1000$  kg/m<sup>3</sup>  
Ambient Temperature : 23.2 °C; Liquid Temperature : 22.1 °C

### DASY5 Configuration:

- Probe: EX3DV4 - SN7608; ConvF(5.36, 5.36, 5.36) @ 5220 MHz; Calibrated: 2020.11.27
- Sensor-Surface: 2mm (Mechanical Surface Detection)
- Electronics: DAE4 Sn1643; Calibrated: 2020.11.30
- Phantom: Twin-SAM; Type: QD 000 P41 Ax; Serial: 2020
- Measurement SW: DASY52, Version 52.10 (4); SEMCAD X Version 14.6.14 (7483)

**Ch44/Area Scan (51x111x1):** Interpolated grid: dx=1.000 mm, dy=1.000 mm  
Maximum value of SAR (interpolated) = 0.459 W/kg

**Ch44/Zoom Scan (8x8x15)/Cube 0:** Measurement grid: dx=4mm, dy=4mm, dz=2mm  
Reference Value = 1.145 V/m; Power Drift = 0.09 dB  
Peak SAR (extrapolated) = 0.798 W/kg  
**SAR(1 g) = 0.222 W/kg; SAR(10 g) = 0.069 W/kg**  
Maximum value of SAR (measured) = 0.428 W/kg





## WLAN 5.3GHz\_802.11a 6Mbps\_Back Side\_10mm\_Ch52\_Ant 6

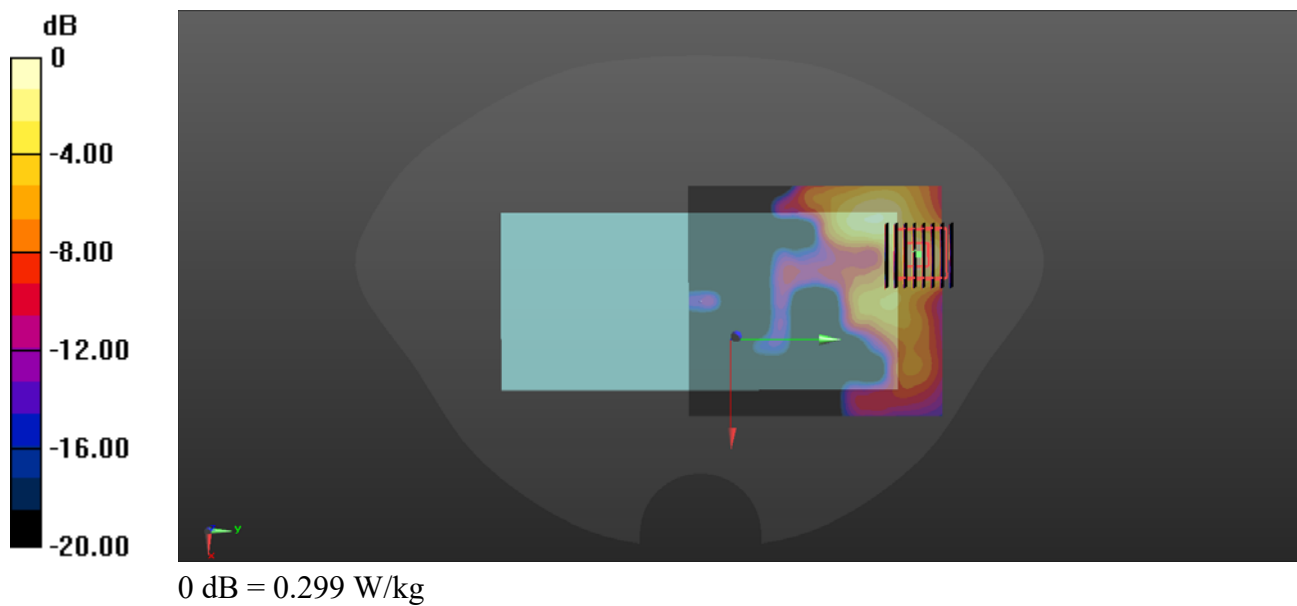
Communication System: UID 0, WLAN 5GHz (0); Frequency: 5260 MHz; Duty Cycle: 1:1  
Medium: HSL\_5250 Medium parameters used:  $f = 5260$  MHz;  $\sigma = 4.714$  S/m;  $\epsilon_r = 36.032$ ;  $\rho = 1000$  kg/m<sup>3</sup>  
Ambient Temperature : 23.2 °C; Liquid Temperature : 22.1 °C

### DASY5 Configuration:

- Probe: EX3DV4 - SN7608; ConvF(5.36, 5.36, 5.36) @ 5260 MHz; Calibrated: 2020.11.27
- Sensor-Surface: 2mm (Mechanical Surface Detection)
- Electronics: DAE4 Sn1643; Calibrated: 2020.11.30
- Phantom: Twin-SAM; Type: QD 000 P41 Ax; Serial: 2020
- Measurement SW: DASY52, Version 52.10 (4); SEMCAD X Version 14.6.14 (7483)

**Ch52/Area Scan (101x111x1):** Interpolated grid: dx=1.000 mm, dy=1.000 mm  
Maximum value of SAR (interpolated) = 0.306 W/kg

**Ch52/Zoom Scan (8x8x15)/Cube 0:** Measurement grid: dx=4mm, dy=4mm, dz=2mm  
Reference Value = 0 V/m; Power Drift = 0.02 dB  
Peak SAR (extrapolated) = 0.595 W/kg  
**SAR(1 g) = 0.154 W/kg; SAR(10 g) = 0.048 W/kg**  
Maximum value of SAR (measured) = 0.299 W/kg



## WLAN 5.5GHz\_802.11a 6Mbps\_Back Side\_10mm\_Ch100\_Ant 6

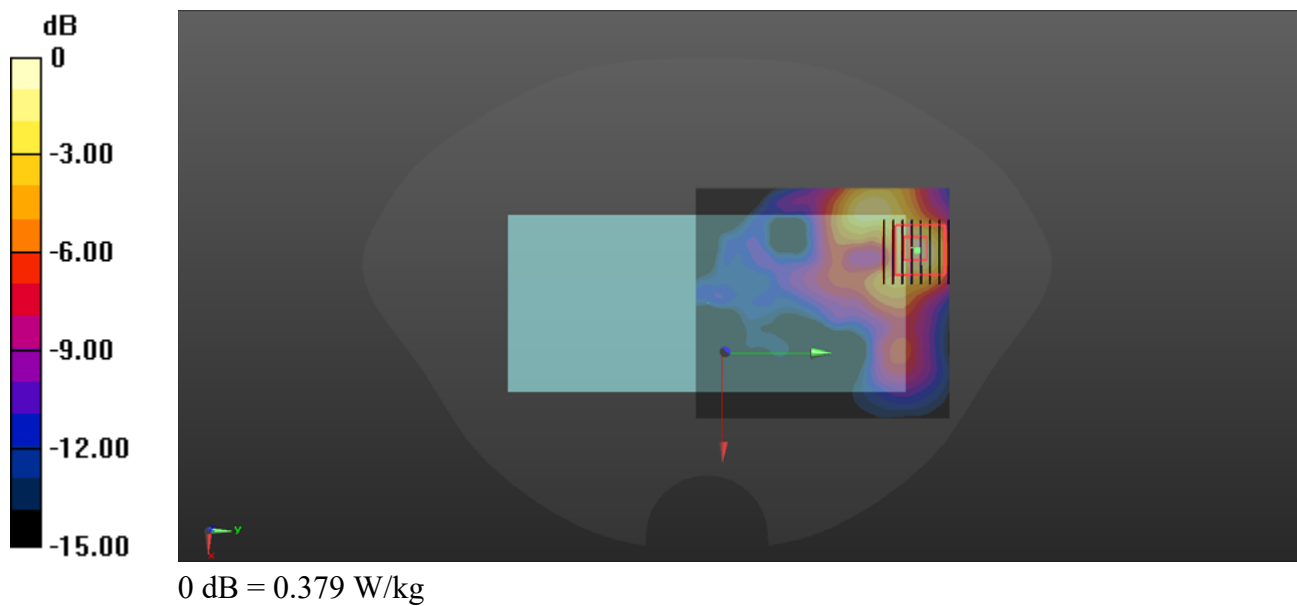
Communication System: UID 0, WLAN 5GHz (0); Frequency: 5500 MHz;Duty Cycle: 1:1  
Medium: HSL\_5600 Medium parameters used:  $f = 5500$  MHz;  $\sigma = 5.007$  S/m;  $\epsilon_r = 35.63$ ;  $\rho = 1000$  kg/m<sup>3</sup>  
Ambient Temperature : 23.2 °C; Liquid Temperature : 22.1 °C

### DASY5 Configuration:

- Probe: EX3DV4 - SN7608; ConvF(4.77, 4.77, 4.77) @ 5500 MHz; Calibrated: 2020.11.27
- Sensor-Surface: 2mm (Mechanical Surface Detection)
- Electronics: DAE4 Sn1643; Calibrated: 2020.11.30
- Phantom: Twin-SAM; Type: QD 000 P41 Ax; Serial: 2020
- Measurement SW: DASY52, Version 52.10 (4); SEMCAD X Version 14.6.14 (7483)

**Ch100/Area Scan (101x111x1):** Interpolated grid: dx=1.000 mm, dy=1.000 mm  
Maximum value of SAR (interpolated) = 0.344 W/kg

**Ch100/Zoom Scan (8x8x15)/Cube 0:** Measurement grid: dx=4mm, dy=4mm, dz=2mm  
Reference Value = 0 V/m; Power Drift = 0.01 dB  
Peak SAR (extrapolated) = 0.776 W/kg  
**SAR(1 g) = 0.196 W/kg; SAR(10 g) = 0.063 W/kg**  
Maximum value of SAR (measured) = 0.379 W/kg



## WLAN 5.8GHz\_802.11a 6Mbps\_Back Side\_10mm\_Ch149\_Ant 6

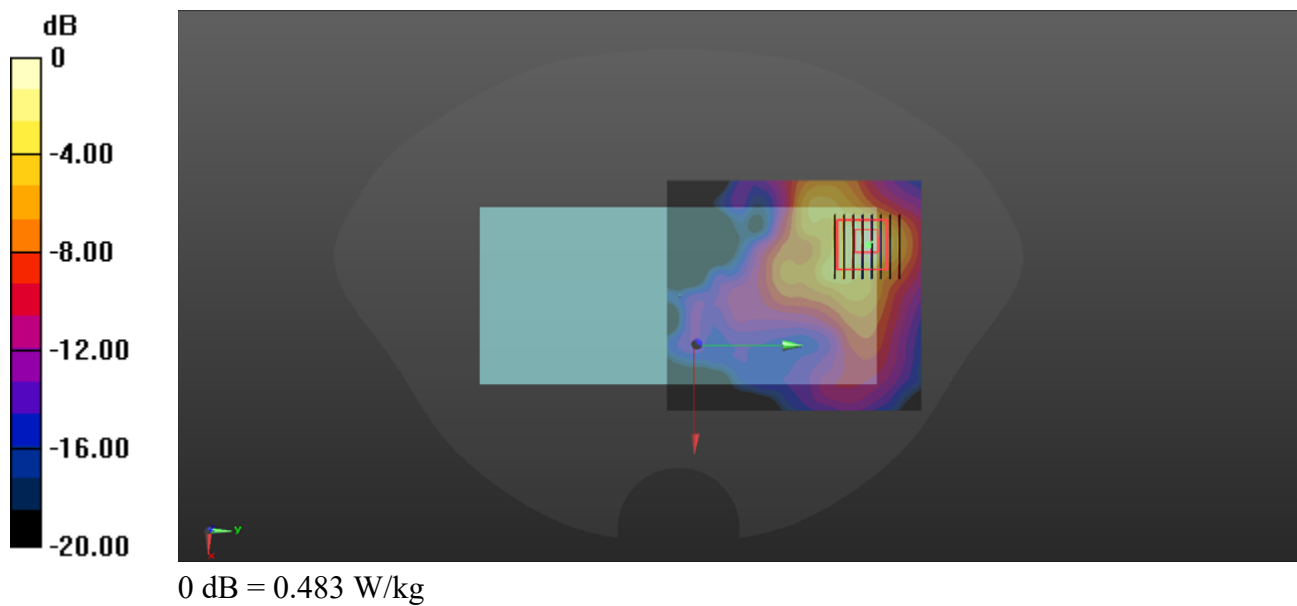
Communication System: UID 0, WLAN 5GHz (0); Frequency: 5745 MHz; Duty Cycle: 1:1  
Medium: HSL\_5750 Medium parameters used:  $f = 5745$  MHz;  $\sigma = 5.291$  S/m;  $\epsilon_r = 35.168$ ;  $\rho = 1000$  kg/m<sup>3</sup>  
Ambient Temperature : 23.2 °C; Liquid Temperature : 22.1 °C

### DASY5 Configuration:

- Probe: EX3DV4 - SN7608; ConvF(4.78, 4.78, 4.78) @ 5745 MHz; Calibrated: 2020.11.27
- Sensor-Surface: 2mm (Mechanical Surface Detection)
- Electronics: DAE4 Sn1643; Calibrated: 2020.11.30
- Phantom: Twin-SAM; Type: QD 000 P41 Ax; Serial: 2020
- Measurement SW: DASY52, Version 52.10 (4); SEMCAD X Version 14.6.14 (7483)

**Ch149/Area Scan (101x111x1):** Interpolated grid: dx=1.000 mm, dy=1.000 mm  
Maximum value of SAR (interpolated) = 0.447 W/kg

**Ch149/Zoom Scan (8x8x15)/Cube 0:** Measurement grid: dx=4mm, dy=4mm, dz=2mm  
Reference Value = 0 V/m; Power Drift = 0.07 dB  
Peak SAR (extrapolated) = 1.03 W/kg  
**SAR(1 g) = 0.238 W/kg; SAR(10 g) = 0.076 W/kg**  
Maximum value of SAR (measured) = 0.483 W/kg



## WLAN 5.3GHz\_802.11a 6Mbps\_Back Side\_0mm\_Ch52\_Ant 6

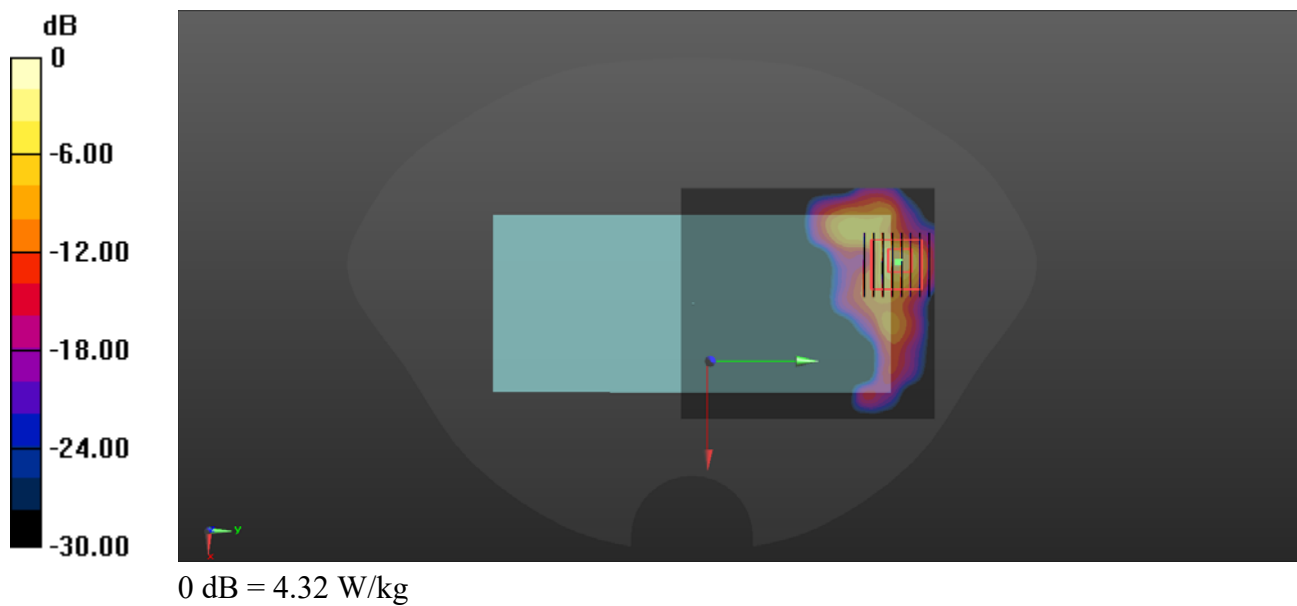
Communication System: UID 0, WLAN 5GHz (0); Frequency: 5260 MHz; Duty Cycle: 1:1  
Medium: HSL\_5250 Medium parameters used:  $f = 5260$  MHz;  $\sigma = 4.714$  S/m;  $\epsilon_r = 36.032$ ;  $\rho = 1000$  kg/m<sup>3</sup>  
Ambient Temperature : 23.2 °C; Liquid Temperature : 22.1 °C

### DASY5 Configuration:

- Probe: EX3DV4 - SN7608; ConvF(5.36, 5.36, 5.36) @ 5260 MHz; Calibrated: 2020.11.27
- Sensor-Surface: 2mm (Mechanical Surface Detection)
- Electronics: DAE4 Sn1643; Calibrated: 2020.11.30
- Phantom: Twin-SAM; Type: QD 000 P41 Ax; Serial: 2020
- Measurement SW: DASY52, Version 52.10 (4); SEMCAD X Version 14.6.14 (7483)

**Ch52/Area Scan (101x111x1):** Interpolated grid: dx=1.000 mm, dy=1.000 mm  
Maximum value of SAR (interpolated) = 2.92 W/kg

**Ch52/Zoom Scan (8x8x15)/Cube 0:** Measurement grid: dx=4mm, dy=4mm, dz=2mm  
Reference Value = 0 V/m; Power Drift = 0.04 dB  
Peak SAR (extrapolated) = 10.0 W/kg  
**SAR(1 g) = 1.75 W/kg; SAR(10 g) = 0.382 W/kg**  
Maximum value of SAR (measured) = 4.32 W/kg



## WLAN 5.5GHz\_802.11a 6Mbps\_Back Side\_0mm\_Ch100\_Ant 6

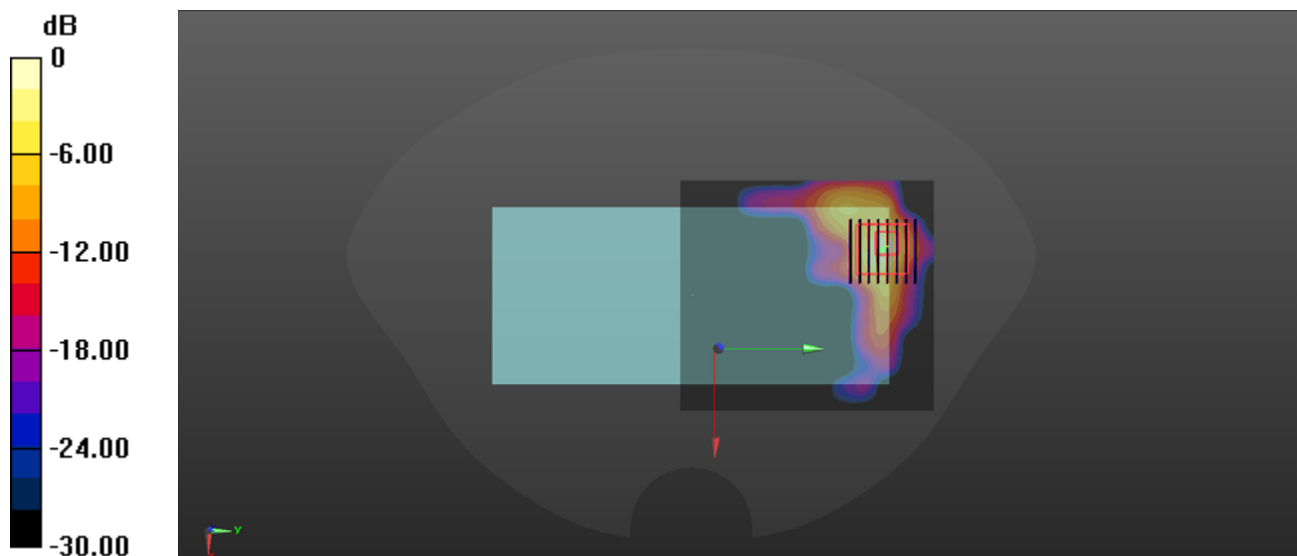
Communication System: UID 0, WLAN 5GHz (0); Frequency: 5500 MHz; Duty Cycle: 1:1  
Medium: HSL\_5600 Medium parameters used:  $f = 5500$  MHz;  $\sigma = 5.007$  S/m;  $\epsilon_r = 35.63$ ;  $\rho = 1000$  kg/m<sup>3</sup>  
Ambient Temperature : 23.2 °C; Liquid Temperature : 22.1 °C

### DASY5 Configuration:

- Probe: EX3DV4 - SN7608; ConvF(4.77, 4.77, 4.77) @ 5500 MHz; Calibrated: 2020.11.27
- Sensor-Surface: 2mm (Mechanical Surface Detection)
- Electronics: DAE4 Sn1643; Calibrated: 2020.11.30
- Phantom: Twin-SAM; Type: QD 000 P41 Ax; Serial: 2020
- Measurement SW: DASY52, Version 52.10 (4); SEMCAD X Version 14.6.14 (7483)

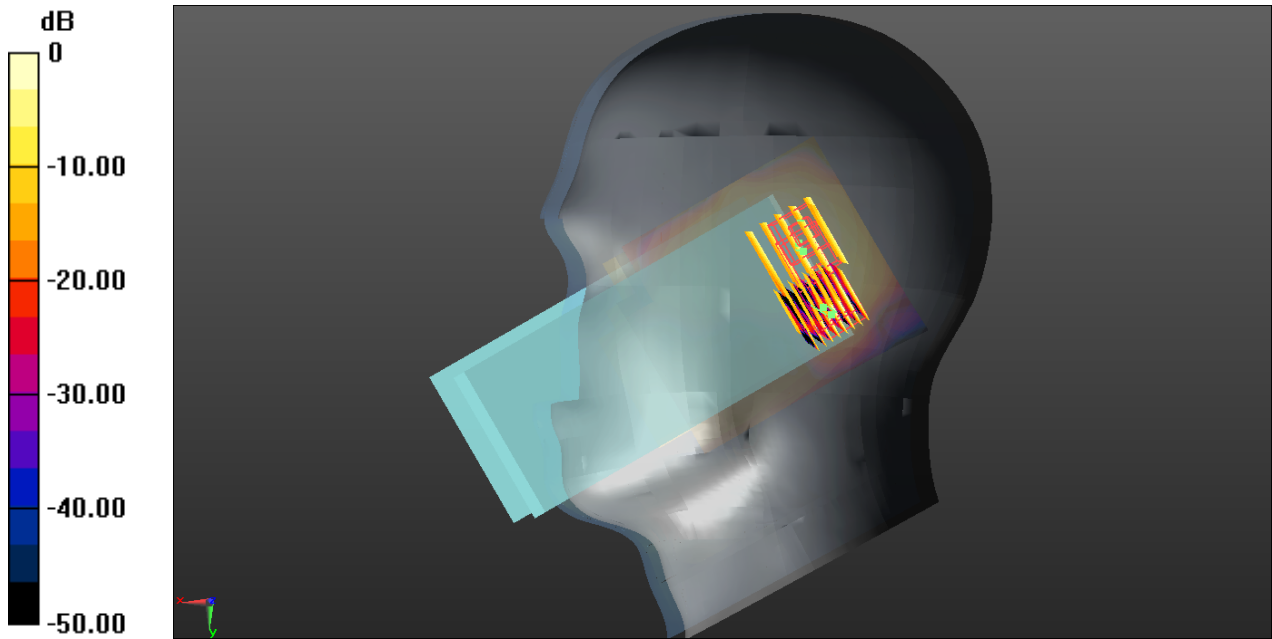
**Ch100/Area Scan (101x111x1):** Interpolated grid: dx=1.000 mm, dy=1.000 mm  
Maximum value of SAR (interpolated) = 6.42 W/kg

**Ch100/Zoom Scan (8x8x15)/Cube 0:** Measurement grid: dx=4mm, dy=4mm, dz=2mm  
Reference Value = 0 V/m; Power Drift = 0.00 dB  
Peak SAR (extrapolated) = 15.1 W/kg  
**SAR(1 g) = 2.48 W/kg; SAR(10 g) = 0.596 W/kg**  
Maximum value of SAR (measured) = 5.99 W/kg



0 dB = 5.99 W/kg

# DC\_12A\_66A\_66A\_N2 + WLAN 5GHz MIMO



0 dB = 0.386 W/kg