

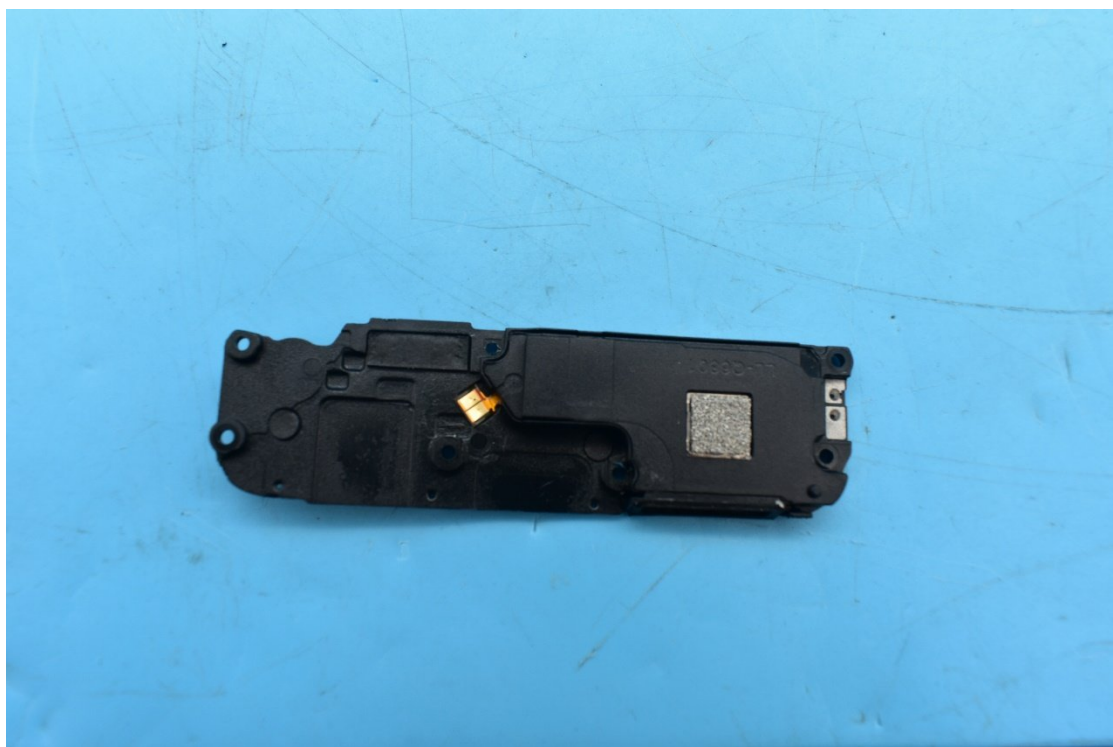
FCC ID:2ABGH-R678L5S6

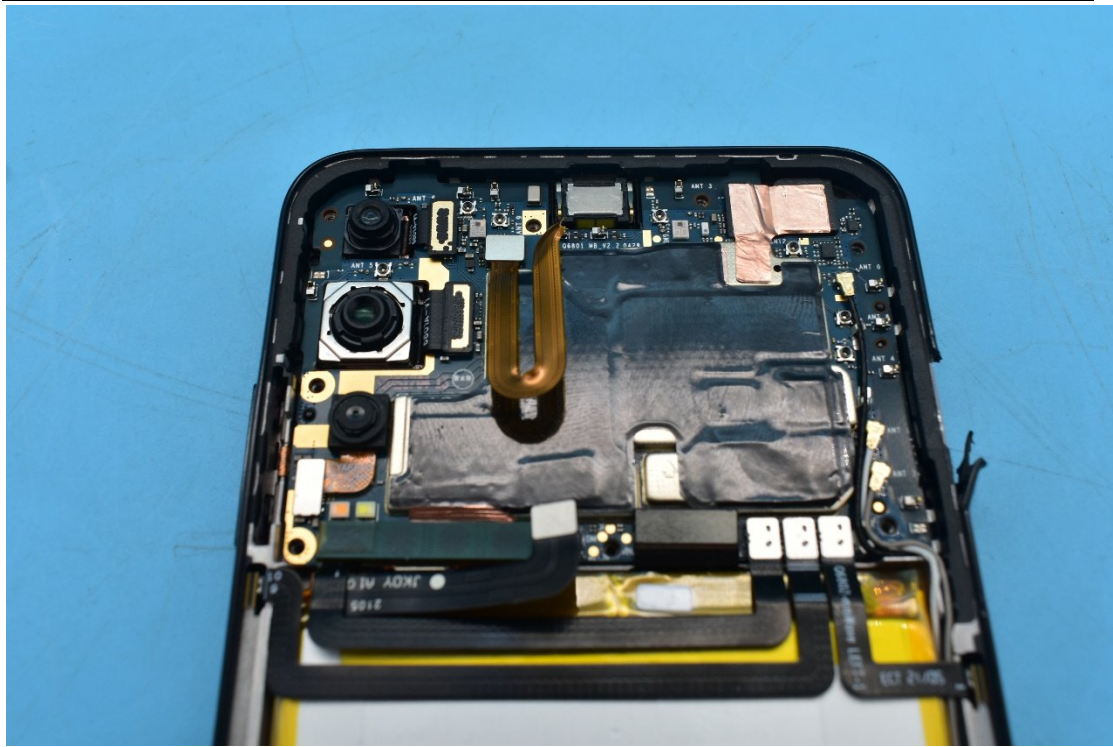
Internal Photos

1. EUT uncover view







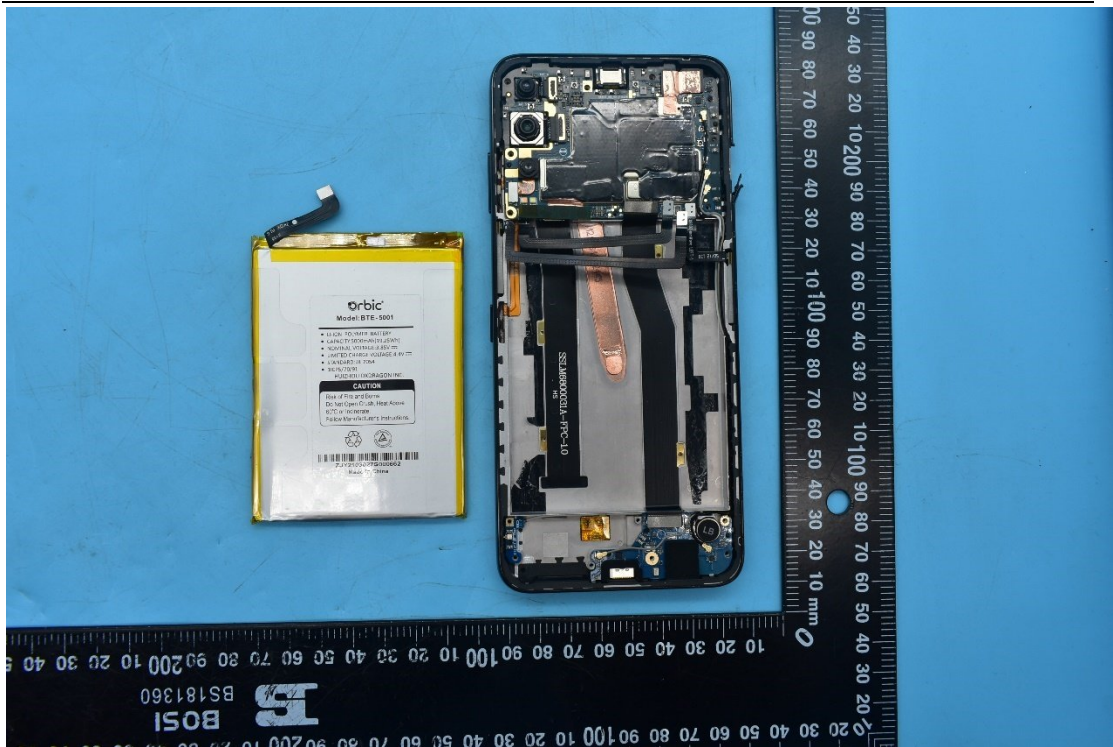




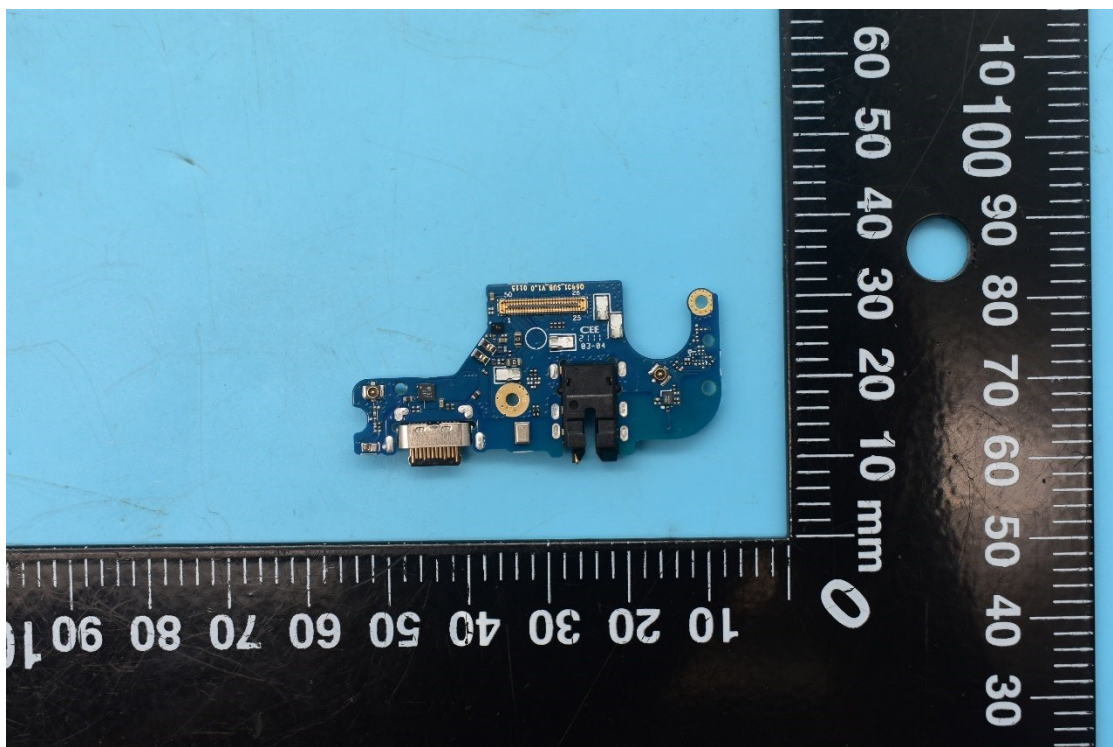
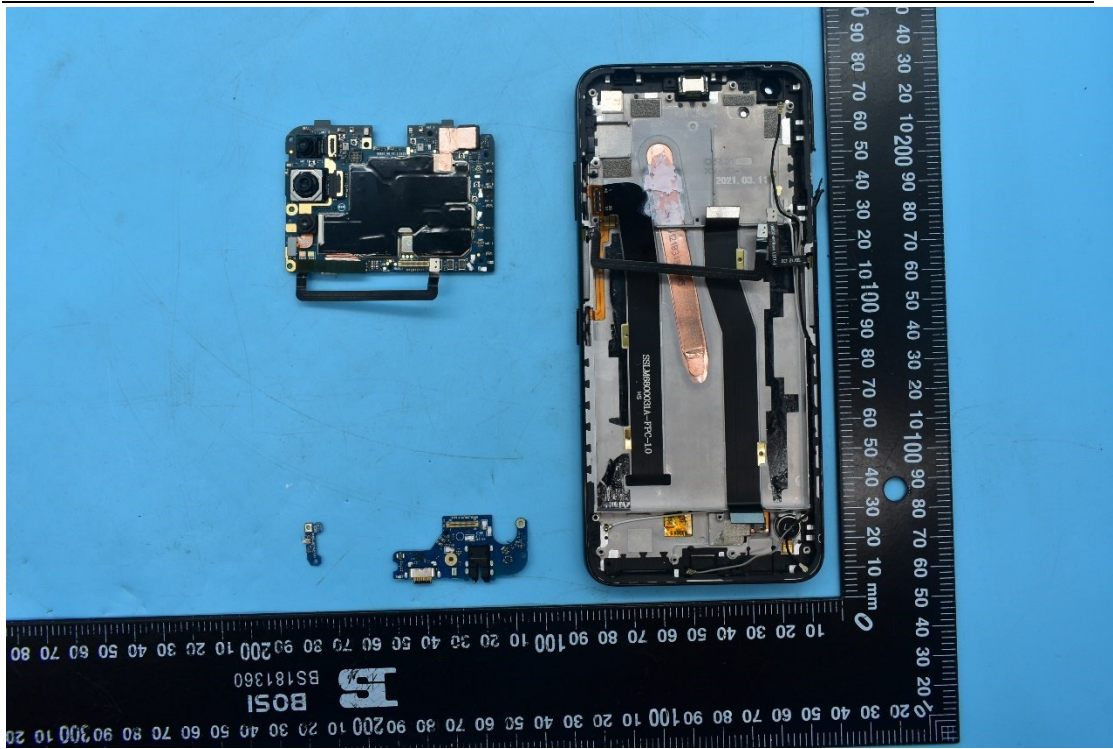
Risk of Fire and Burns.
Do Not Open, Crush, Heat Above
60°C or Incinerate.
Follow Manufacturer's Instructions.

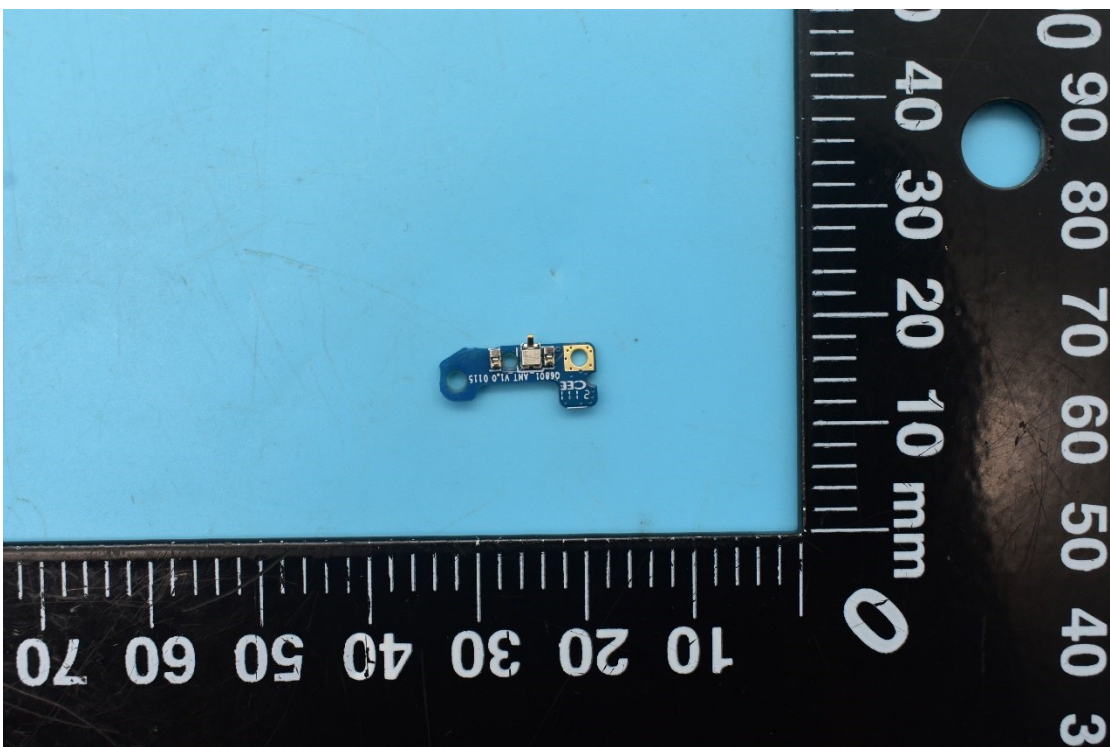
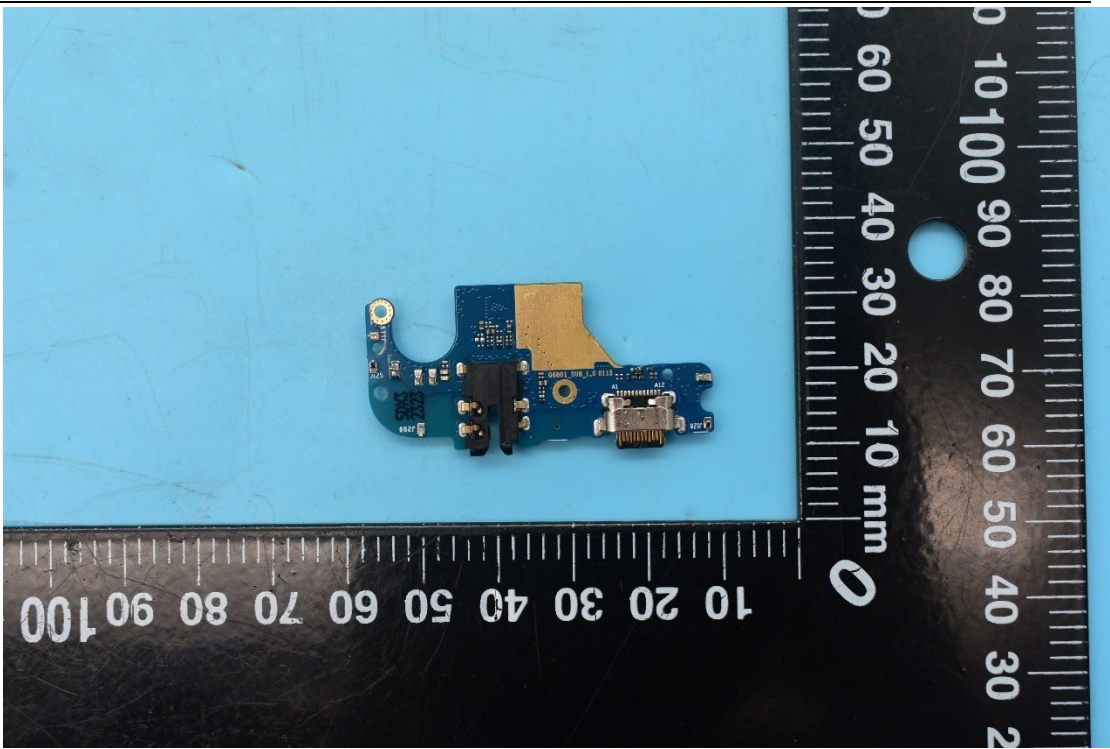


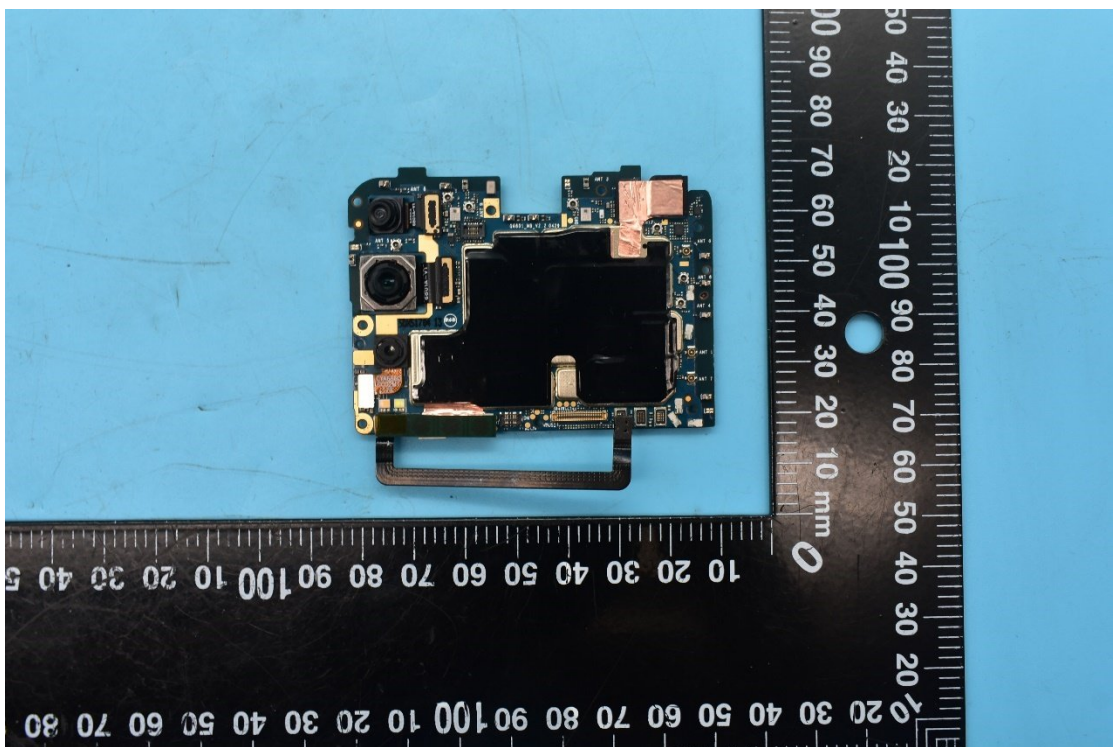
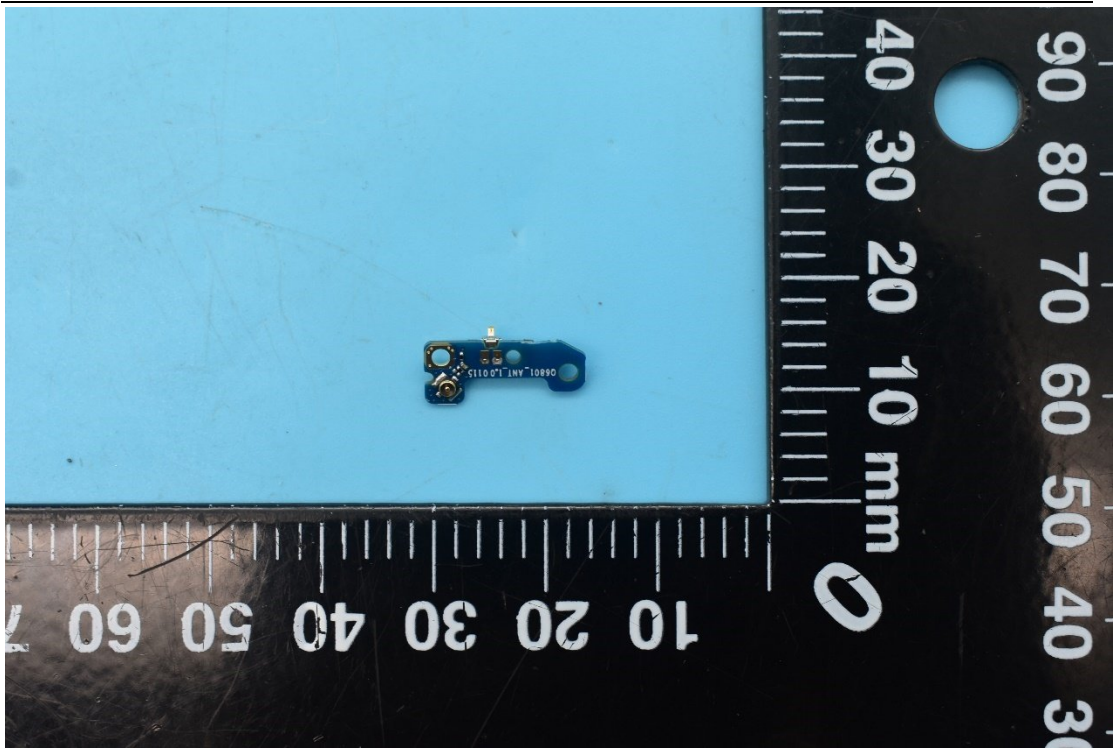
ZJY2103027G000662
Made in China

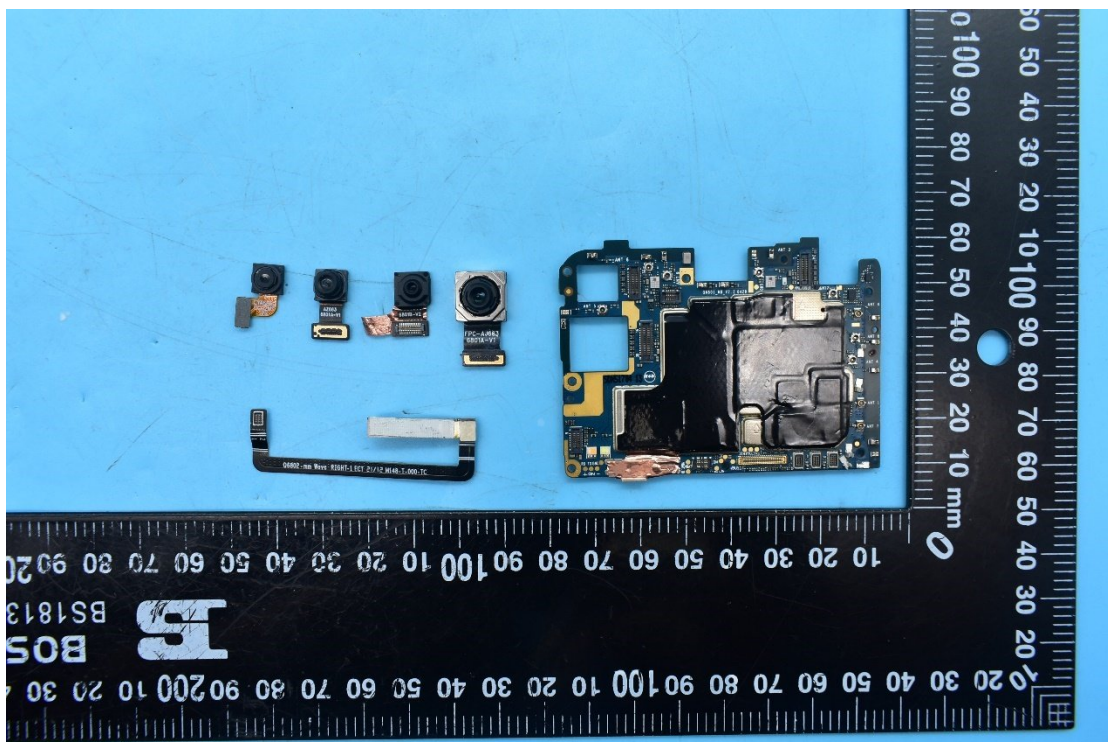
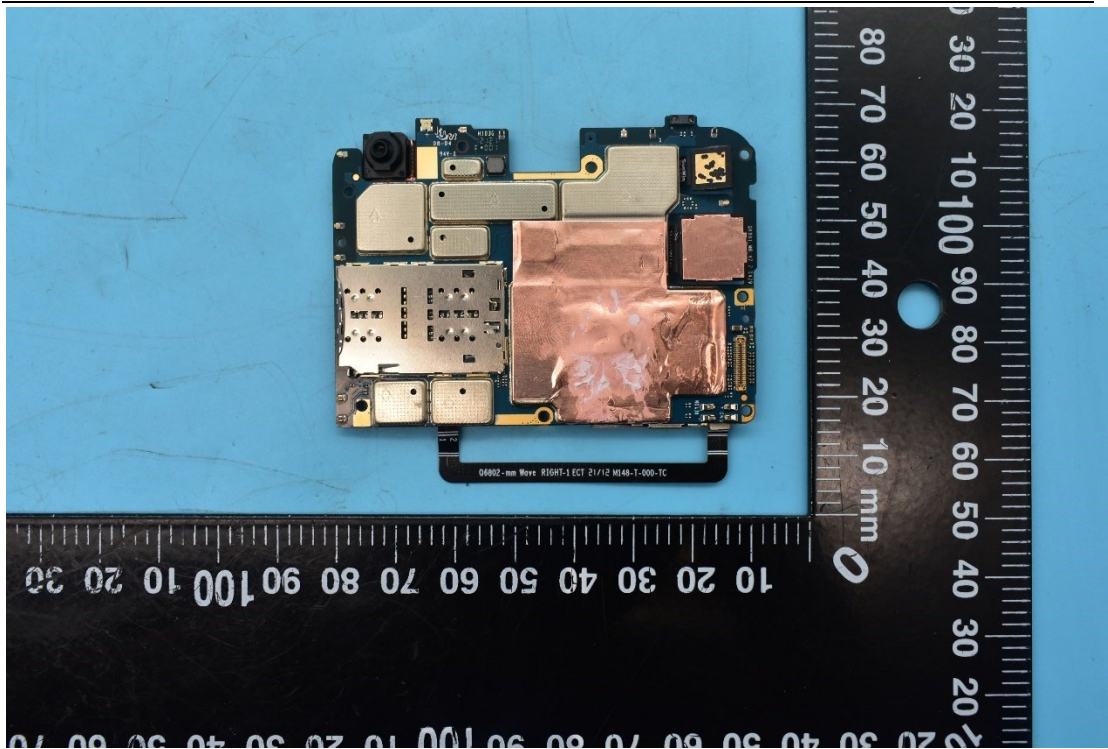


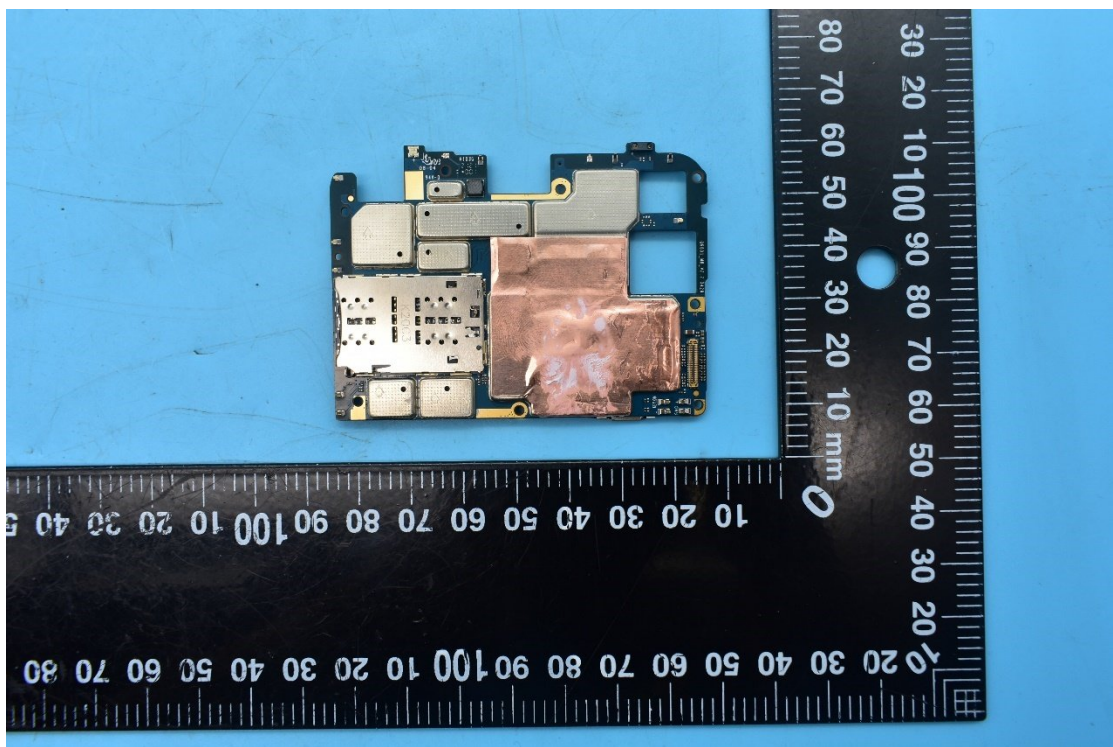
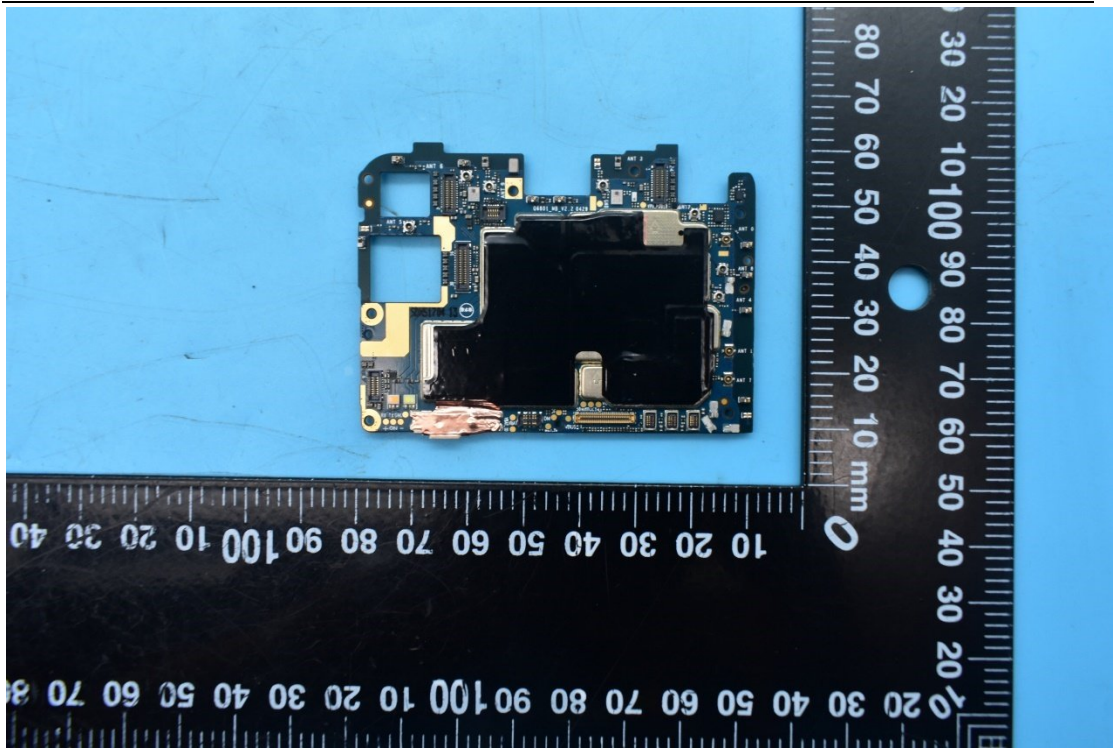


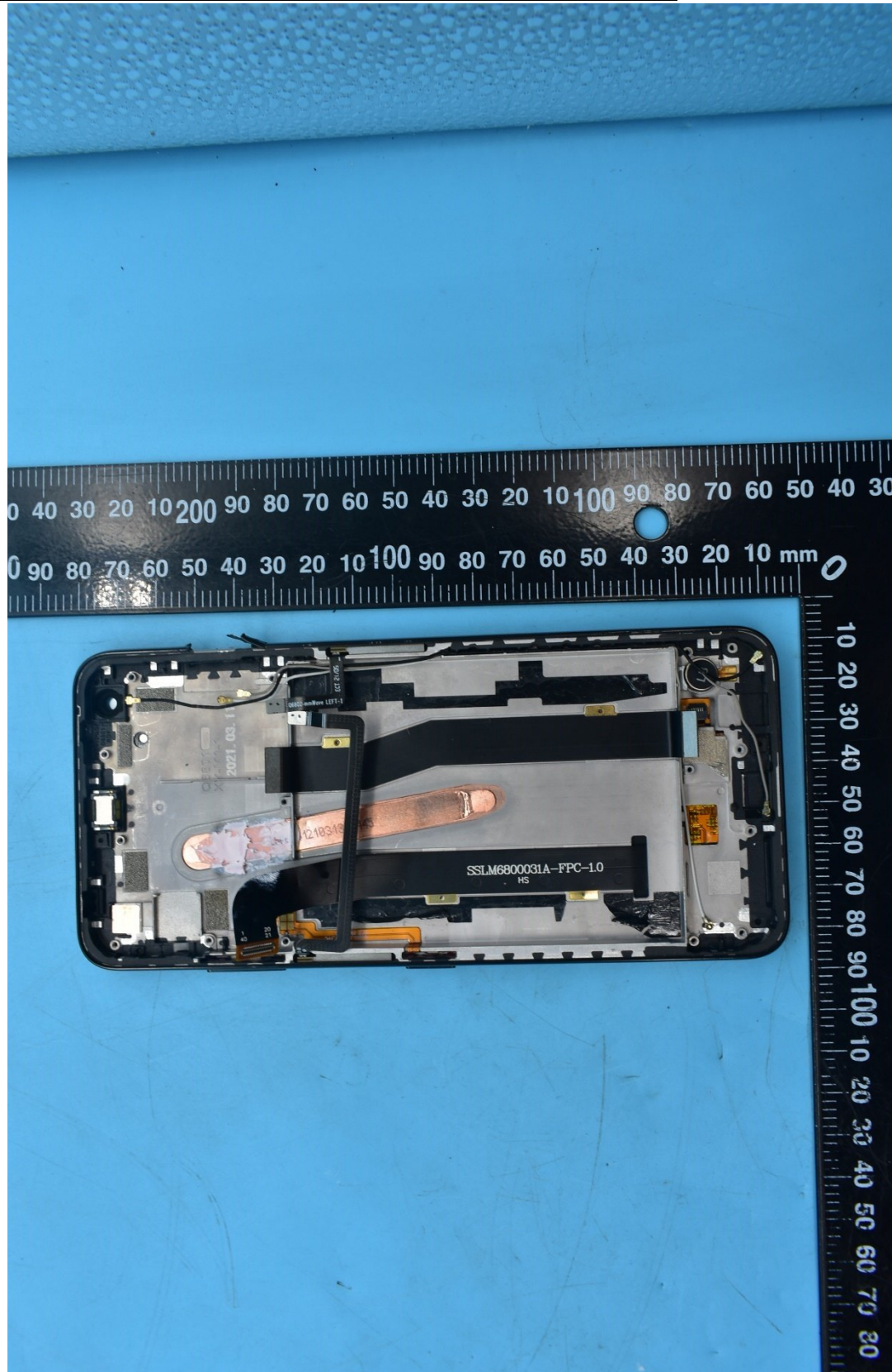


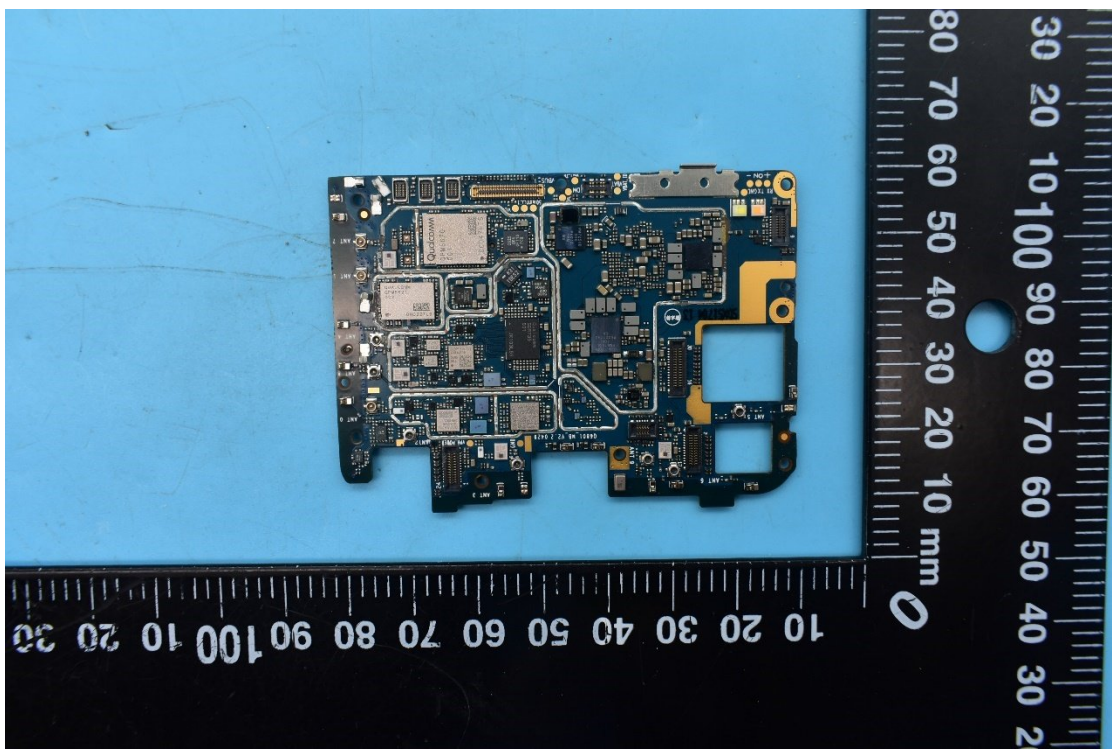
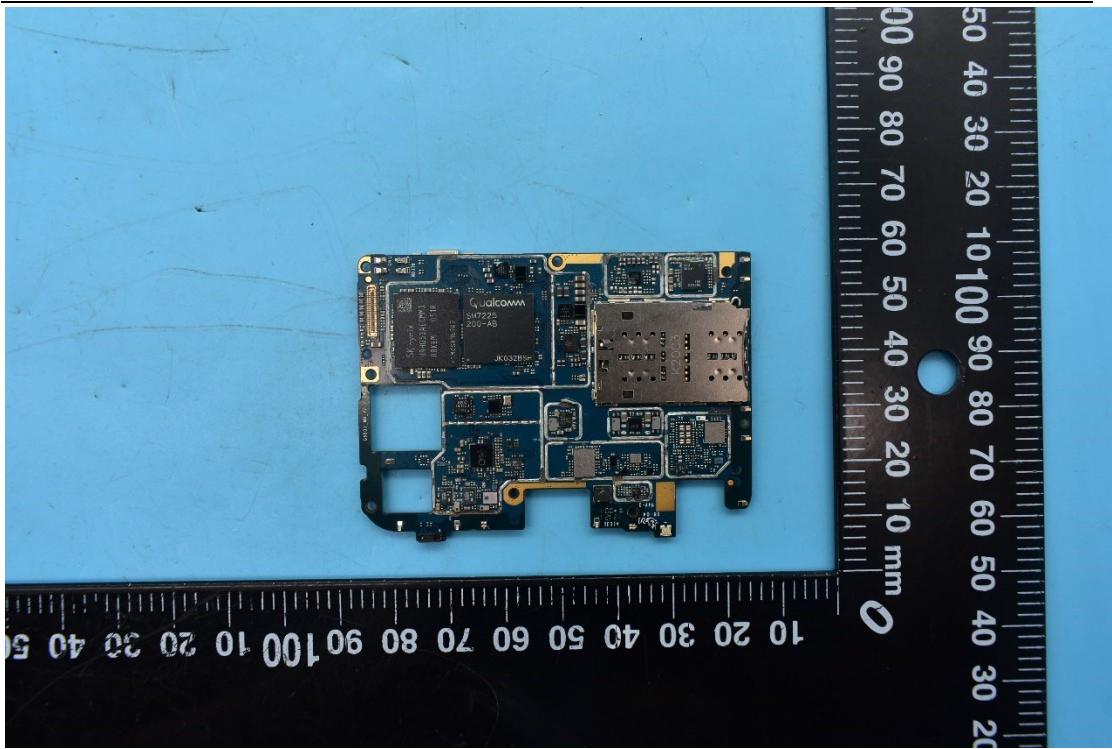


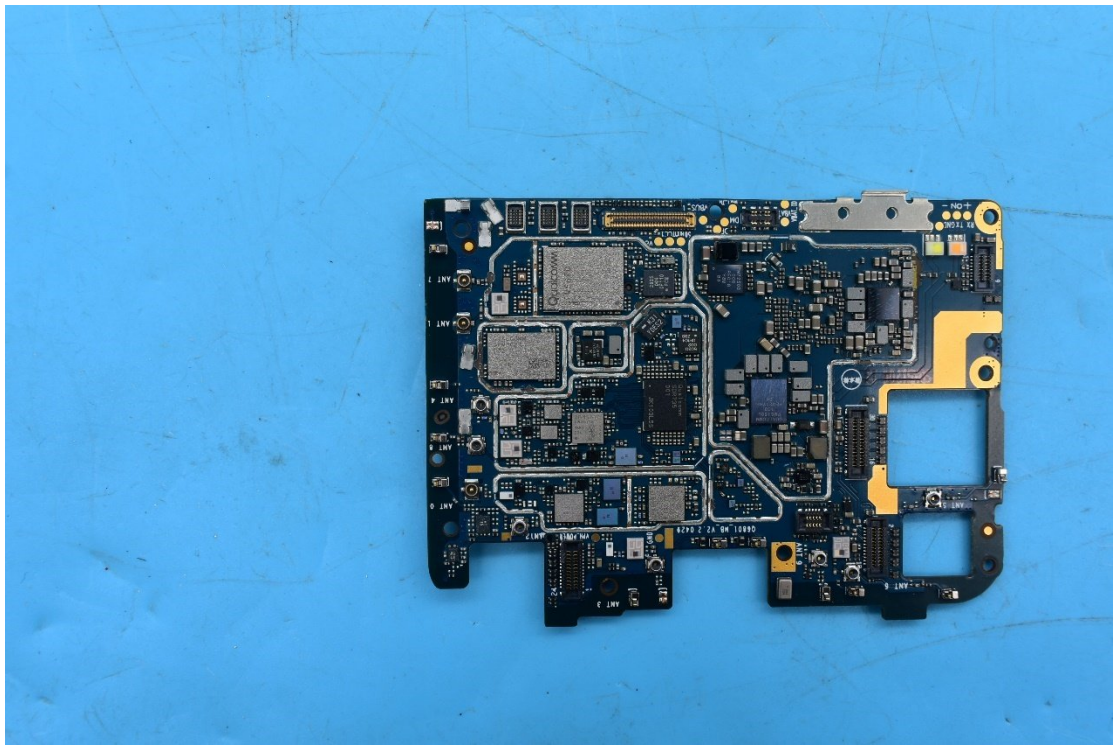
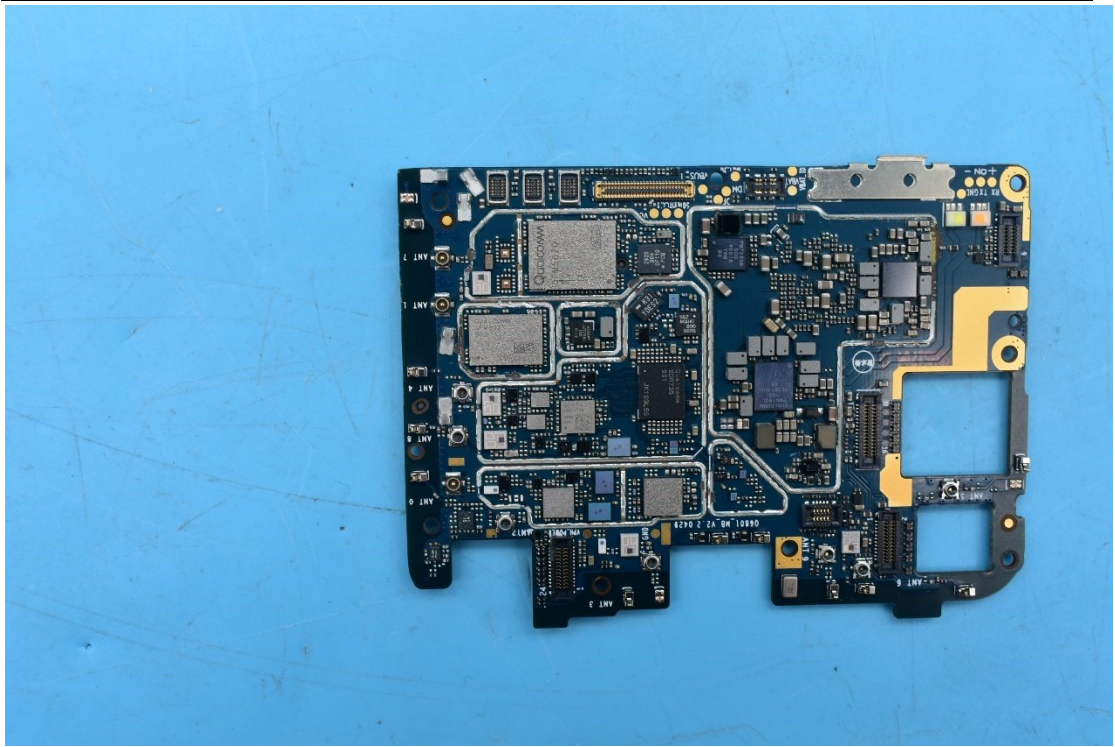


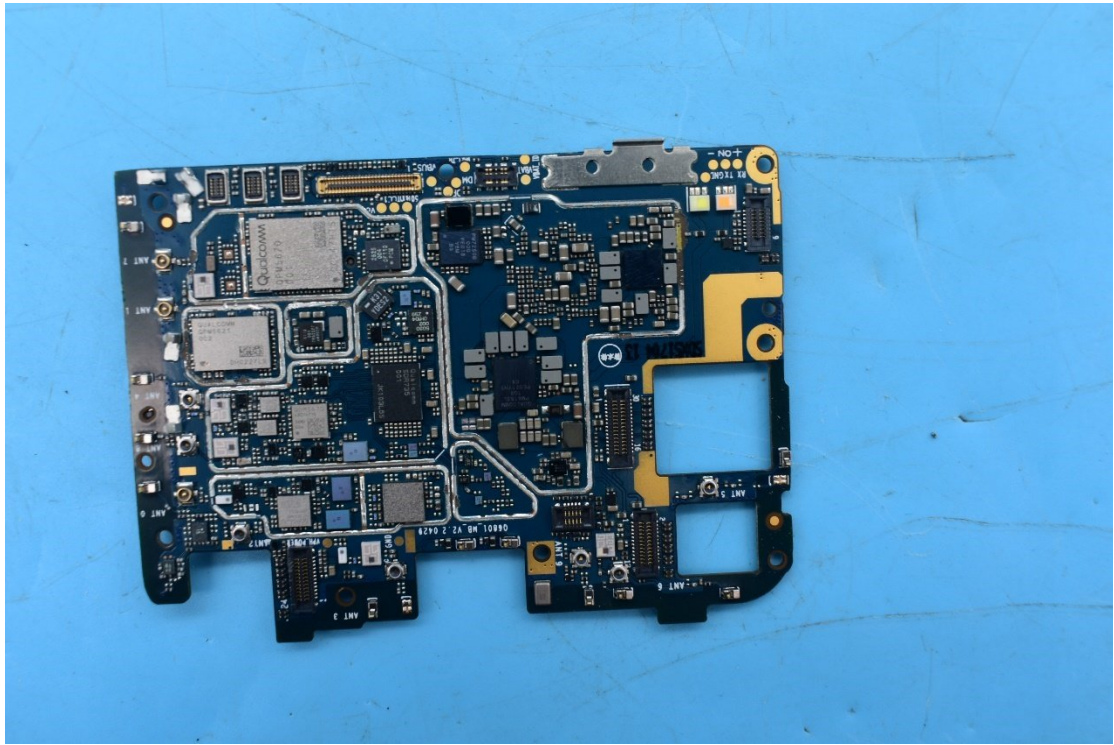




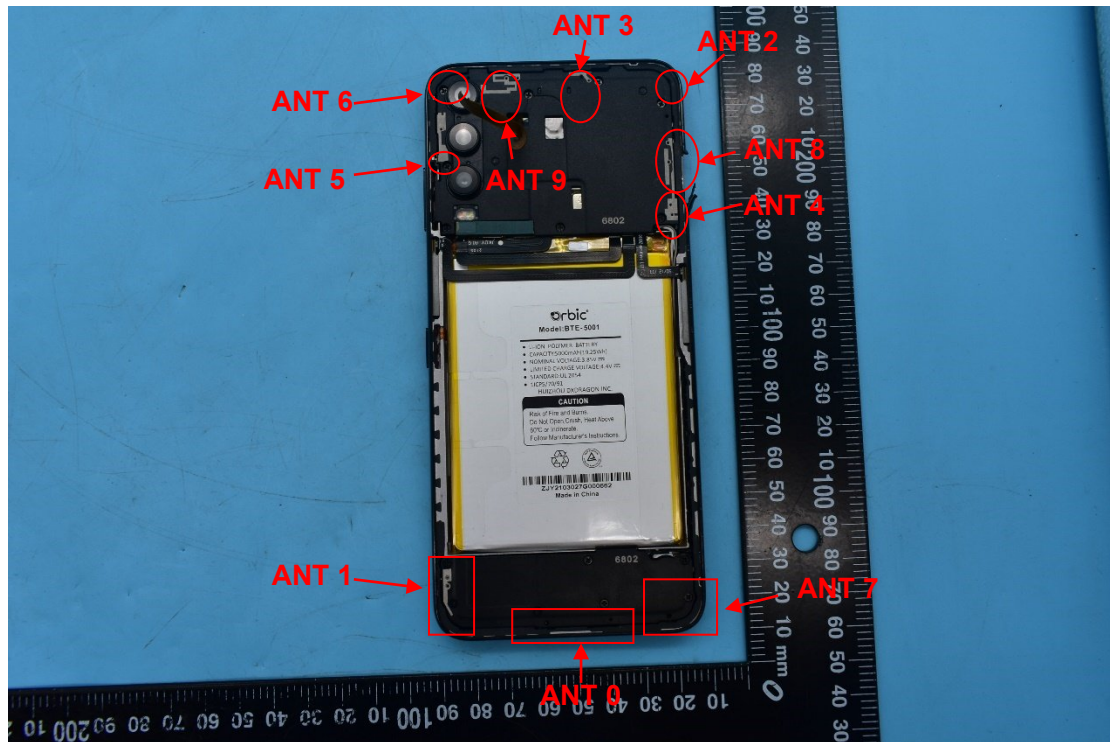








2. Antenna view



Antenna supports TX bands:

ANT 0: GSM 850, UMTS Band V, LTE Band 5/12/13/17, 5G N5;

ANT 2: GSM 850, UMTS Band V, LTE Band 5/12/13/17, 5G N5;

ANT 3: GSM1900,WCDMA Band 2/4, LTE Band 2/4/66, 5G N77;

ANT 8: 5G N2/66;

ANT 5: WLAN 2.4GHz CH0, WLAN 5GHz CH0, Bluetooth;

ANT 6: WLAN 5GHz CH1

ANT 9: WLAN 2.4GHz CH1;

Antenna supports RX bands:

ANT 0: GSM 850, UMTS Band V, LTE Band 5/12/13/17, 5G N5;

ANT 1: LTE Band 2/4/66, 5G N2/77/66;

ANT 2: GSM 850, UMTS Band V, LTE Band 5/12/13/17, 5G N5;

ANT 3: LTE Band 2/4/66, 5G N2/66/77;

ANT 4: 5G N77

ANT 5: WLAN 2.4GHz CH0, WLAN 5GHz CH0, Bluetooth;LTE B46



ANT 6: GPS L1/L5; WLAN 5GHz CH1, LTE B46
ANT 7: LTE Band 2/4/66, 5G N2/66/77;
ANT 8: GSM1900,WCDMA Band 2/4, LTE B 2/4/66, 5G N2/66;