

APPENDIX A: VERIFICATION PLOTS

PCTEST

Date: 11/22/2021

30 GHz System Verification

Device Under Test Properties

DUT	Serial Number
30 GHz Verification Source	1045

Exposure Conditions

Phantom Section	Position	Test Distance [mm]	Band	Frequency [MHz]
5G	FRONT	5.55	Validation band	30000.0

Hardware Setup

Probe, Calibration Date	DAE, Calibration Date
EUmmWV4 - SN9541_F1-55GHz, 2021-05-20	DAE4 Sn665, 2021-02-12

Software Setup

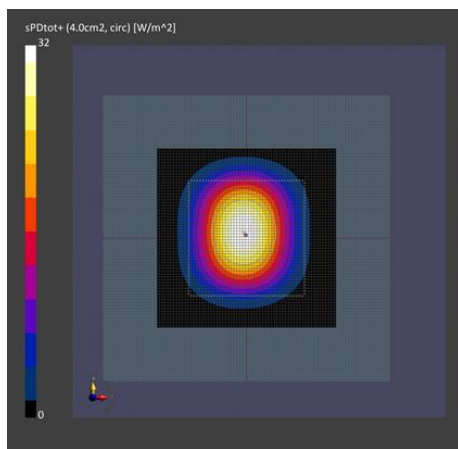
Software	Software Version
cDASY6 Module mmWave	2.4.2.62

Scans Setup

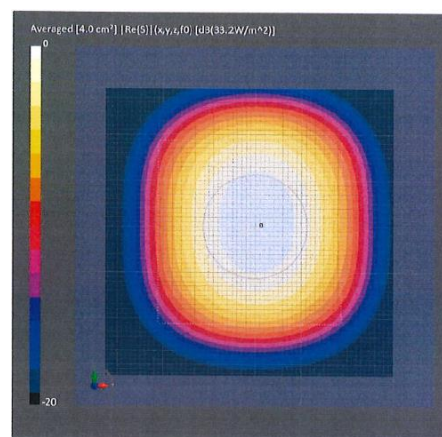
Scan Type	5G Scan
Grid Extents [mm]	60.0 x 60.0
Grid Steps [lambda]	0.25 x 0.25
Sensor Surface [mm]	5.55

Measurement Results

Scan Type	5G Scan
Avg. Area [cm ²]	4.00
pS _{tot} avg [W/m ²]	32.0
pS _n avg [W/m ²]	31.5
E _{peak} [V/m]	127
Deviation (dB)	-0.16



30GHz System Verification



Calibration Certificate

PCTEST

Date: 12/02/2021

30 GHz System Verification

Device Under Test Properties

DUT	Serial Number
30 GHz Verification Source	1035

Exposure Conditions

Phantom Section	Position	Test Distance [mm]	Band	Frequency [MHz]
5G	FRONT	5.55	Validation band	30000.0

Hardware Setup

Probe, Calibration Date	DAE, Calibration Date
EUmmWV4 - SN9541_F1-55GHz, 2021-05-20	DAE4 Sn665, 2021-02-12

Software Setup

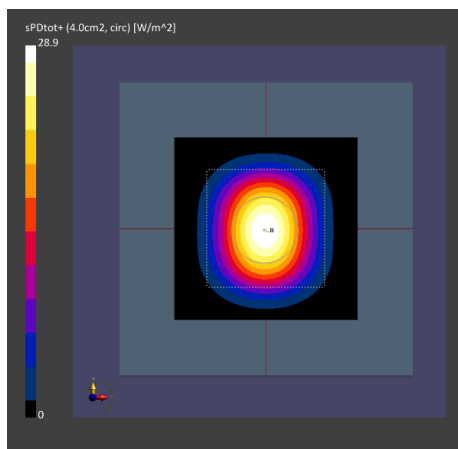
Software	Software Version
cDASY6 Module mmWave	2.4.2.62

Scans Setup

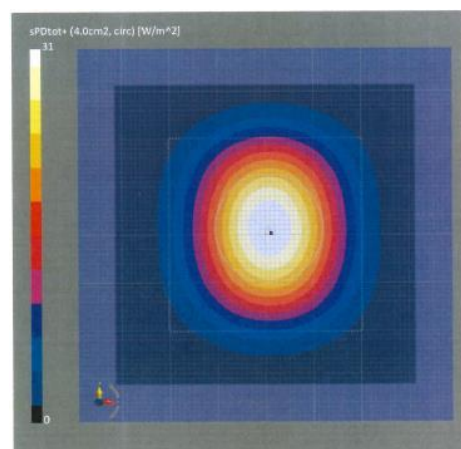
Scan Type	5G Scan
Grid Extents [mm]	60.0 x 60.0
Grid Steps [lambda]	0.25 x 0.25
Sensor Surface [mm]	5.55

Measurement Results

Scan Type	5G Scan
Avg. Area [cm ²]	4.00
pS _{tot} avg [W/m ²]	28.9
pS _n avg [W/m ²]	28.6
E _{peak} [V/m]	122
Deviation (dB)	-0.30



30GHz System Verification



Calibration Certificate