



REPORT No.: SZ21010412S02

Annex C Plots of System Check Performance

Measurement Report for 30G Sources, FRONT, Validation band, CW, Channel 30000 (30000.0 MHz)

Device Under Test Properties

Name, Manufacturer	Dimensions [mm]	IMEI	DUT Type
30G Sources,	100.0 x 100.0 x 100.0		Phone

Exposure Conditions

Phantom Section	Position, Test Distance [mm]	Band	Group, UID	Frequency [MHz], Channel Number	Conversion Factor
5G	FRONT, 5.55	Validation band	CW, 0--	30000.0, 30000	1.0

Hardware Setup

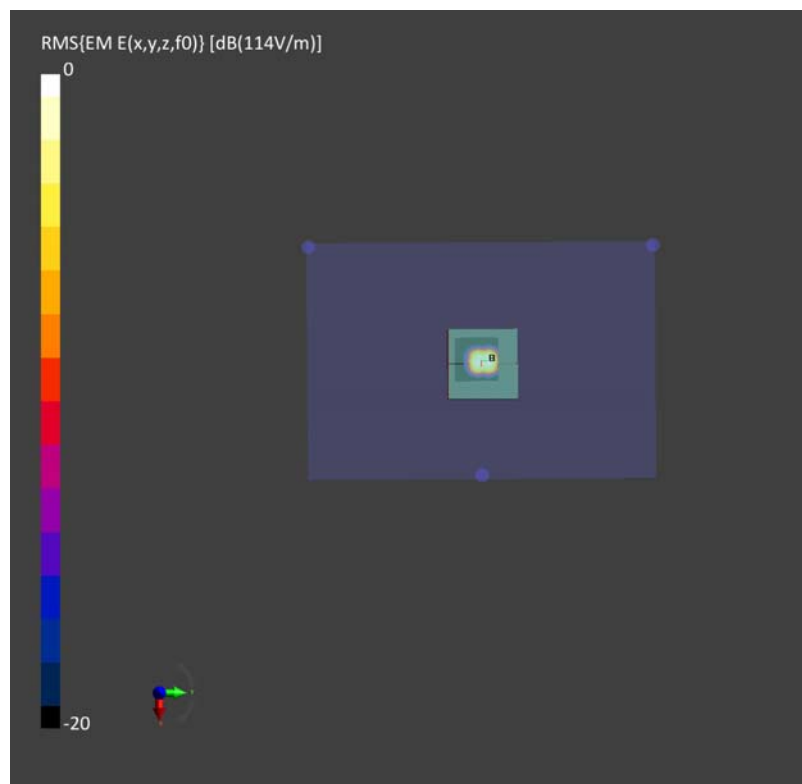
Phantom	Medium	Probe, Calibration Date	DAE, Calibration Date
mmWave - xxxx	Air -	EUmmWV4 - SN9512_F1-78GHz, 2020-12-02	DAE4 Sn1643, 2020-11-30

Scans Setup

Scan Type	5G Scan
Grid Extents [mm]	60.0 x 60.0
Grid Steps [lambda]	0.25 x 0.25
Sensor Surface [mm]	5.55
MAIA	N/A

Measurement Results

Scan Type	5G Scan
Date	2021-04-13, 10:43
Avg. Area [cm ²]	1.00
pS _{tot} avg [W/m ²]	28.0
pS _n avg [W/m ²]	27.6
E _{peak} [V/m]	114
Power Drift [dB]	-0.06



Measurement Report for Device, FRONT, Validation band, CW, Channel 30000 (30000.0 MHz)

Device Under Test Properties

Name, Manufacturer	Dimensions [mm]	IMEI	DUT Type
Device,	100.0 x 100.0 x 100.0		Phone

Exposure Conditions

Phantom Section	Position, Test Distance [mm]	Band	Group, UID	Frequency [MHz], Channel Number	Conversion Factor
5G	FRONT, 5.55	Validation band	CW, 0--	30000.0, 30000	1.0

Hardware Setup

Phantom	Medium	Probe, Calibration Date	DAE, Calibration Date
mmWave - xxxx	Air -	EUmmWV4 - SN9512_F1-78GHz, 2020-12-02	DAE4 Sn1643, 2020-11-30

Scans Setup

Scan Type	5G Scan
Grid Extents [mm]	60.0 x 60.0
Grid Steps [lambda]	0.25 x 0.25
Sensor Surface [mm]	5.55
MAIA	N/A

Measurement Results

Scan Type	5G Scan
Date	2021-04-22, 12:38
Avg. Area [cm ²]	1.00
pS _{tot} avg [W/m ²]	27.8
pS _n avg [W/m ²]	27.5
E _{peak} [V/m]	114
Power Drift [dB]	-0.08

