



REPORT No.: SZ23040391S02

Annex D Plots of Maximum SAR Test Results

Laboratory Name: Morlab Grop
 Measurement Report for Device, EDGE RIGHT, Band n260, 5G NR (DFT-s-OFDM, 1 RB, 100 MHz, QPSK, 120 kHz) RBPosition:Mid
 AntennaCfg:SISO, Channel 2254166 (38500.0 MHz)

Device Under Test Properties

Model, Manufacturer	Dimensions [mm]	IMEI	DUT Type
Device,	165.0 x 75.0 x 7.0		Phone

Exposure Conditions

Phantom Section	Position, Test Distance [mm]	Band	Group, UID	Frequency [MHz], Channel Number	Conversion Factor
5G	EDGE RIGHT, 2.00	Band n260	5G NR FR2 TDD, 10869-AAD	38500.0, 2254166	1.0

Hardware Setup

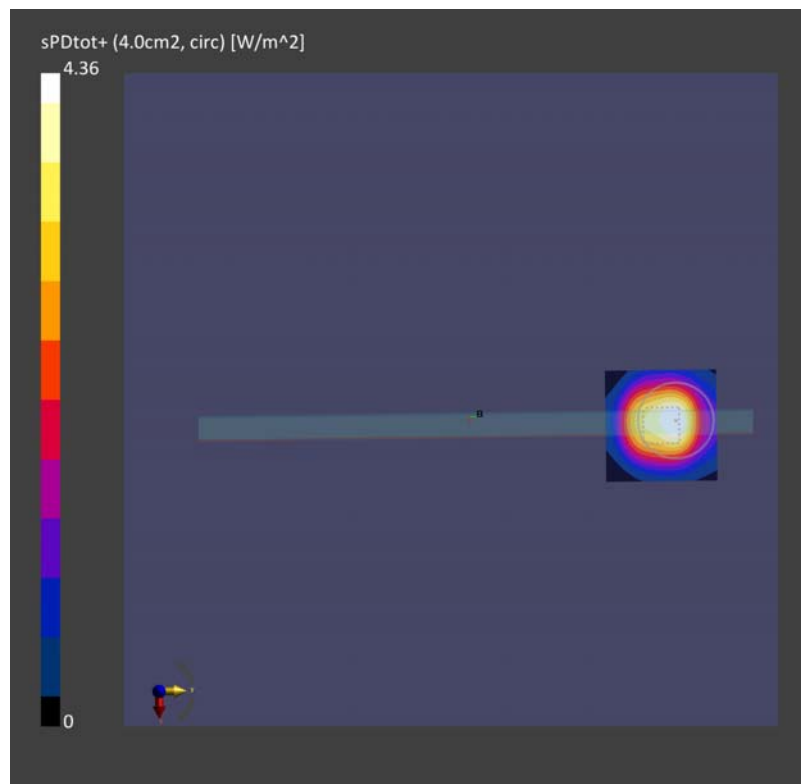
Phantom	Medium	Probe, Calibration Date	DAE, Calibration Date
mmWave - xxxx	Air -	EUmmWV4 - SN9602_F1-55GHz, 2023-11-02	DAE4 Sn480, 2023-09-19

Scans Setup

Scan Type	5G Scan
Grid Extents [mm]	60.0 x 60.0
Grid Steps [lambda]	0.25 x 0.25
Sensor Surface [mm]	2.0
MAIA	N/A

Measurement Results

Scan Type	5G Scan
Date	2024-02-18, 10:47
Avg. Area [cm ²]	4.00
psPDtot+ [W/m ²]	4.36
psPDmod+ [W/m ²]	4.52
E _{max} [V/m]	93.8



Laboratory Name: Morlab Grop
Measurement Report for Device, EDGE RIGHT, Band n260, 5G NR (DFT-s-OFDM, 1 RB, 100 MHz, QPSK, 120 kHz) RBPosition:Mid
AntennaCfg:SISO, Channel 2254166 (38500.0 MHz)

Device Under Test Properties

Model, Manufacturer	Dimensions [mm]	IMEI	DUT Type
Device,	165.0 x 75.0 x 7.0		Phone

Exposure Conditions

Phantom Section	Position, Test Distance [mm]	Band	Group, UID	Frequency [MHz], Channel Number	Conversion Factor
5G	EDGE RIGHT, 2.00	Band n260	5G NR FR2 TDD, 10869-AAD	38500.0, 2254166	1.0

Hardware Setup

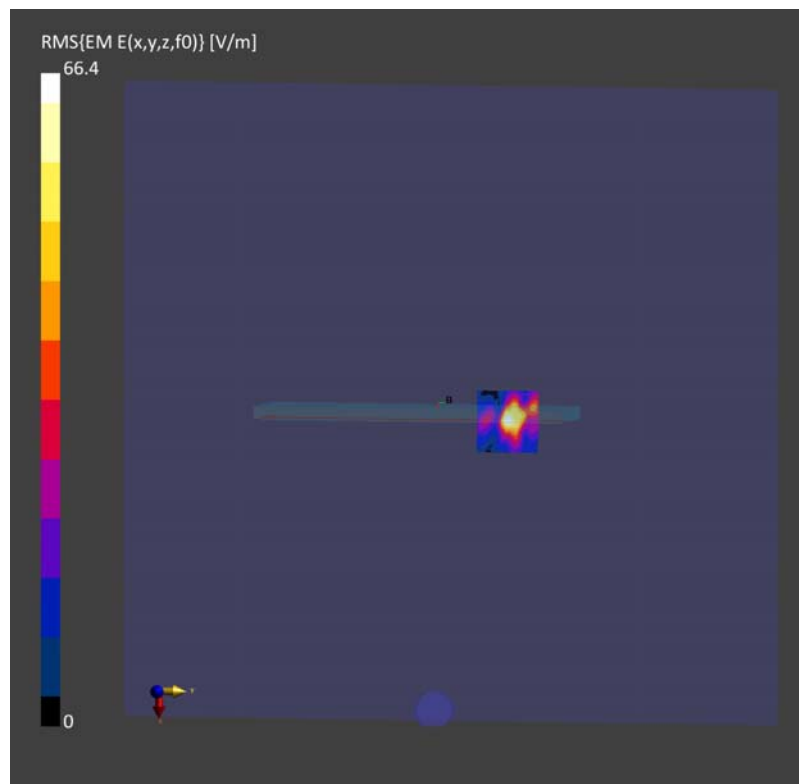
Phantom	Medium	Probe, Calibration Date	DAE, Calibration Date
mmWave - xxxx	Air -	EUmmWV4 - SN9602_F1-55GHz, 2024-03-12	DAE4 Sn480, 2023-09-19

Scans Setup

Scan Type	5G Scan
Grid Extents [mm]	60.0 x 60.0
Grid Steps [lambda]	0.25 x 0.25
Sensor Surface [mm]	2.0
MAIA	N/A

Measurement Results

Scan Type	5G Scan
Date	2024-06-07, 14:26
Avg. Area [cm ²]	4.00
psPDtot+ [W/m ²]	3.27
psPDmod+ [W/m ²]	3.47
E _{max} [V/m]	66.4



Laboratory Name: Morlab Grop

 Measurement Report for Device, EDGE RIGHT, Band n260, 5G NR (DFT-s-OFDM, 1 RB, 100 MHz, QPSK, 120 kHz) RBPosition:Mid
 AntennaCfg:SISO, Channel 2254166 (38500.0 MHz)

Device Under Test Properties

Model, Manufacturer	Dimensions [mm]	IMEI	DUT Type
Device,	165.0 x 75.0 x 7.0		Phone

Exposure Conditions

Phantom Section	Position, Test Distance [mm]	Band	Group, UID	Frequency [MHz], Channel Number	Conversion Factor
5G	EDGE RIGHT, 2.00	Band n260	5G NR FR2 TDD, 10869-AAD	38500.0, 2254166	1.0

Hardware Setup

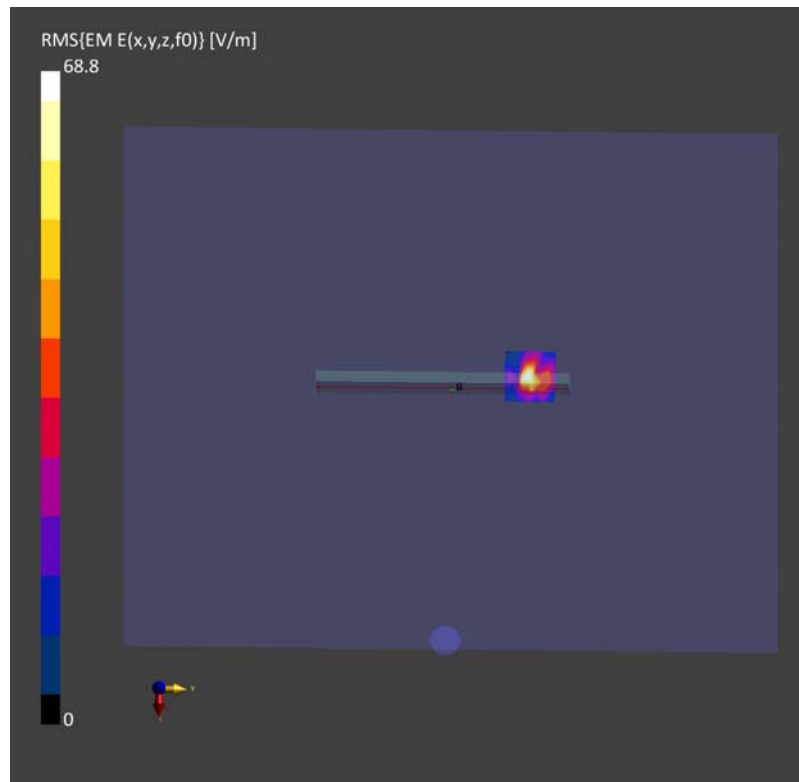
Phantom	Medium	Probe, Calibration Date	DAE, Calibration Date
mmWave - xxxx	Air -	EUmmWV4 - SN9602_F1-55GHz, 2024-03-12	DAE4 Sn480, 2023-09-19

Scans Setup

Scan Type	5G Scan
Grid Extents [mm]	60.0 x 60.0
Grid Steps [lambda]	0.25 x 0.25
Sensor Surface [mm]	2.0
MAIA	N/A

Measurement Results

Scan Type	5G Scan
Date	2024-06-07, 13:16
Avg. Area [cm ²]	4.00
psPDtot+ [W/m ²]	4.14
psPDmod+ [W/m ²]	4.26
E _{max} [V/m]	68.8



Laboratory Name: Morlab Grop

Measurement Report for Device, EDGE RIGHT, Band n261, 5G NR (DFT-s-OFDM, 1 RB, 100 MHz, QPSK, 120 kHz) RBPosition:Mid
AntennaCfg:SISO, Channel 2077915 (27924.9 MHz)

Device Under Test Properties

Model, Manufacturer	Dimensions [mm]	IMEI	DUT Type
Device,	165.0 x 75.0 x 7.0		Phone

Exposure Conditions

Phantom Section	Position, Test Distance [mm]	Band	Group, UID	Frequency [MHz], Channel Number	Conversion Factor
5G	EDGE RIGHT, 2.00	Band n261	5G NR FR2 TDD, 10869-AAD	27924.9, 2077915	1.0

Hardware Setup

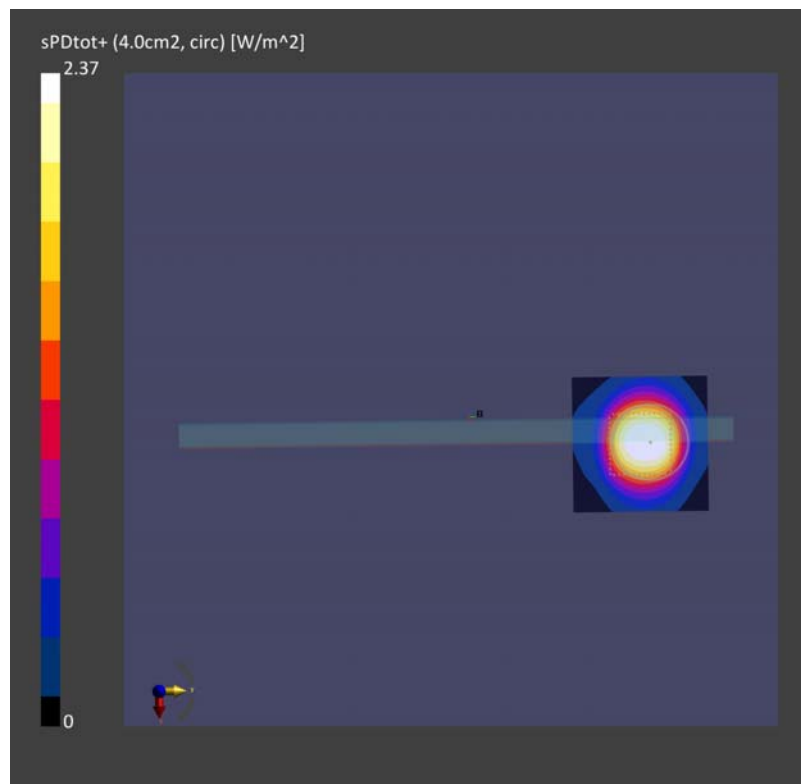
Phantom	Medium	Probe, Calibration Date	DAE, Calibration Date
mmWave - xxxx	Air -	EUmmWV4 - SN9602_F1-55GHz, 2023-11-02	DAE4 Sn480, 2023-09-19

Scans Setup

Scan Type	5G Scan
Grid Extents [mm]	60.0 x 60.0
Grid Steps [lambda]	0.25 x 0.25
Sensor Surface [mm]	2.0
MAIA	N/A

Measurement Results

Scan Type	5G Scan
Date	2024-02-19, 11:15
Avg. Area [cm ²]	4.00
psPDtot+ [W/m ²]	2.37
psPDmod+ [W/m ²]	2.49
E _{max} [V/m]	61.6



Laboratory Name: Morlab Grop

Measurement Report for Device, EDGE RIGHT, Band n261, 5G NR (DFT-s-OFDM, 1 RB, 100 MHz, QPSK, 120 kHz) RBPosition:Mid
AntennaCfg:SISO, Channel 2077915 (27924.9 MHz)

Device Under Test Properties

Model, Manufacturer	Dimensions [mm]	IMEI	DUT Type
Device,	165.0 x 75.0 x 7.0		Phone

Exposure Conditions

Phantom Section	Position, Test Distance [mm]	Band	Group, UID	Frequency [MHz], Channel Number	Conversion Factor
5G	EDGE RIGHT, 2.00	Band n261	5G NR FR2 TDD, 10869-AAD	27924.9, 2077915	1.0

Hardware Setup

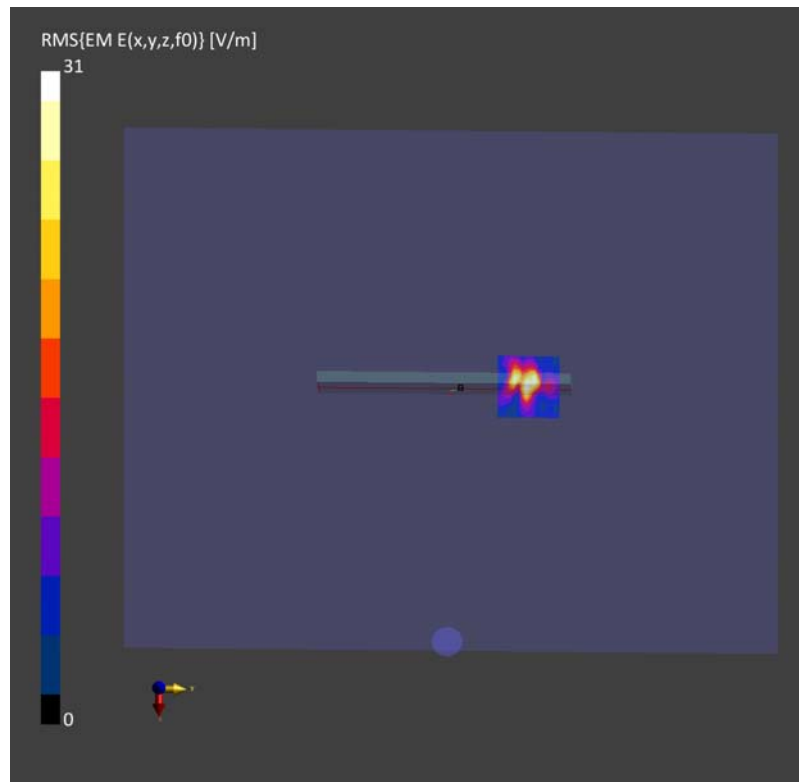
Phantom	Medium	Probe, Calibration Date	DAE, Calibration Date
mmWave - xxxx	Air -	EUmmWV4 - SN9602_F1-55GHz, 2024-03-12	DAE4 Sn480, 2023-09-19

Scans Setup

Scan Type	5G Scan
Grid Extents [mm]	60.0 x 60.0
Grid Steps [lambda]	0.25 x 0.25
Sensor Surface [mm]	2.0
MAIA	N/A

Measurement Results

Scan Type	5G Scan
Date	2024-06-07, 17:01
Avg. Area [cm ²]	4.00
psPDtot+ [W/m ²]	0.840
psPDmod+ [W/m ²]	0.901
E _{max} [V/m]	31.0



Laboratory Name: Morlab Grop
Measurement Report for Device, EDGE RIGHT, Band n261, 5G NR (DFT-s-OFDM, 1 RB, 100 MHz, QPSK, 120 kHz) RBPosition:Mid
AntennaCfg:SISO, Channel 2077915 (27924.9 MHz)

Device Under Test Properties

Model, Manufacturer	Dimensions [mm]	IMEI	DUT Type
Device,	165.0 x 75.0 x 7.0		Phone

Exposure Conditions

Phantom Section	Position, Test Distance [mm]	Band	Group, UID	Frequency [MHz], Channel Number	Conversion Factor
5G	EDGE RIGHT, 2.00	Band n261	5G NR FR2 TDD, 10869-AAD	27924.9, 2077915	1.0

Hardware Setup

Phantom	Medium	Probe, Calibration Date	DAE, Calibration Date
mmWave - xxxx	Air -	EUmmWV4 - SN9602_F1-55GHz, 2024-03-12	DAE4 Sn480, 2023-09-19

Scans Setup

Scan Type	5G Scan
Grid Extents [mm]	60.0 x 60.0
Grid Steps [lambda]	0.25 x 0.25
Sensor Surface [mm]	2.0
MAIA	N/A

Measurement Results

Scan Type	5G Scan
Date	2024-06-07, 15:11
Avg. Area [cm ²]	4.00
psPDtot+ [W/m ²]	1.49
psPDmod+ [W/m ²]	1.62
E _{max} [V/m]	45.0

