



REPORT No.: SZ23040391S02

## Annex C Plots of System Performance Check

Laboratory Name: Morlab Grop  
 Measurement Report for Device, FRONT, Validation band, CW, Channel 30000 (30000.0 MHz)

**Device Under Test Properties**

Model, Manufacturer	Dimensions [mm]	IMEI	DUT Type
Device,	100.0 x 100.0 x 100.0		Phone

**Exposure Conditions**

Phantom Section	Position, Test Distance [mm]	Band	Group, UID	Frequency [MHz], Channel Number	Conversion Factor
5G	FRONT, 5.55	Validation band	CW, 0--	30000.0, 30000	1.0

**Hardware Setup**

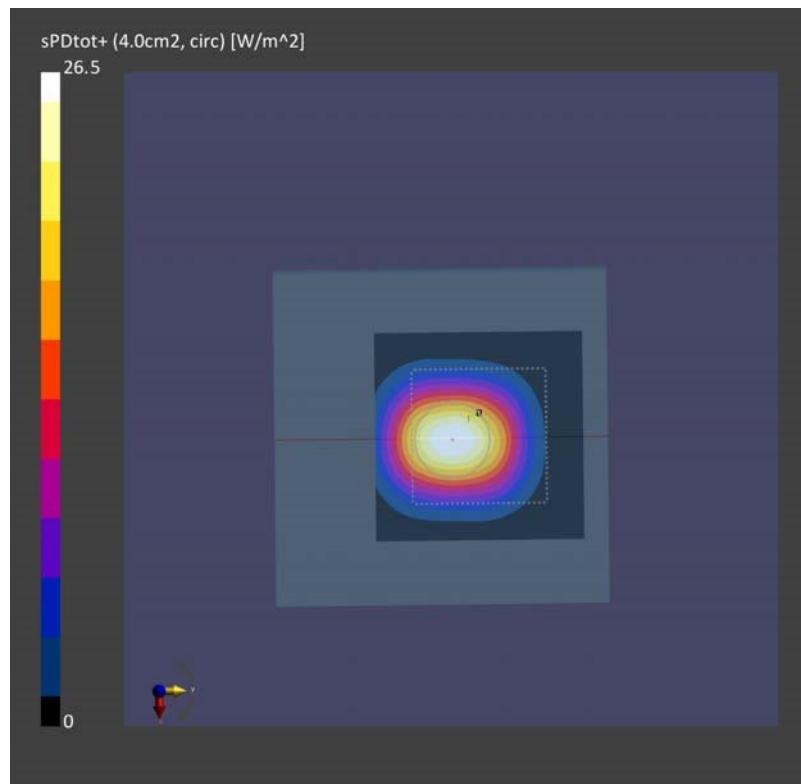
Phantom	Medium	Probe, Calibration Date	DAE, Calibration Date
mmWave - xxxx	Air -	EUmmWV4 - SN9602_F1-55GHz, 2023-11-02	DAE4 Sn480, 2023-09-19

**Scans Setup**

Scan Type	5G Scan
Grid Extents [mm]	60.0 x 60.0
Grid Steps [lambda]	0.25 x 0.25
Sensor Surface [mm]	5.55
MAIA	N/A

**Measurement Results**

Scan Type	5G Scan
Date	2024-02-18, 09:15
Avg. Area [cm <sup>2</sup> ]	4.00
psPDtot+ [W/m <sup>2</sup> ]	26.5
psPDmod+ [W/m <sup>2</sup> ]	26.6
E <sub>max</sub> [V/m]	112



Laboratory Name: Morlab Grop  
 Measurement Report for 3G Sources, FRONT, Validation band, CW, Channel 30000 (30000.0 MHz)

**Device Under Test Properties**

Model, Manufacturer	Dimensions [mm]	IMEI	DUT Type
Device,	100.0 x 100.0 x 100.0		Phone

**Exposure Conditions**

Phantom Section	Position, Test Distance [mm]	Band	Group, UID	Frequency [MHz], Channel Number	Conversion Factor
5G	FRONT, 5.55	Validation band	CW, 0--	30000.0, 30000	1.0

**Hardware Setup**

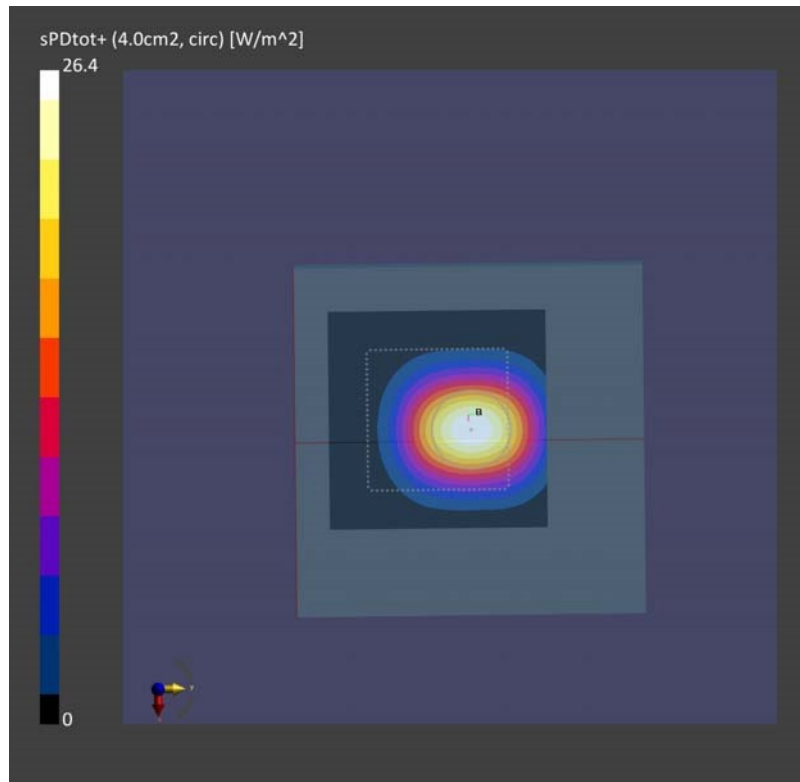
Phantom	Medium	Probe, Calibration Date	DAE, Calibration Date
mmWave - xxxx	Air -	EUmmWV4 - SN9602_F1-55GHz, 2023-11-02	DAE4 Sn480, 2023-09-19

**Scans Setup**

Scan Type	5G Scan
Grid Extents [mm]	60.0 x 60.0
Grid Steps [lambda]	0.25 x 0.25
Sensor Surface [mm]	5.55
MAIA	N/A

**Measurement Results**

Scan Type	5G Scan
Date	2024-02-19, 10:43
Avg. Area [cm <sup>2</sup> ]	4.00
psPDtot+ [W/m <sup>2</sup> ]	26.4
psPDmod+ [W/m <sup>2</sup> ]	26.4
E <sub>max</sub> [V/m]	111



Laboratory Name: Morlab Grop  
 Measurement Report for Device, FRONT, Validation band, CW, Channel 30000 (30000.0 MHz)

**Device Under Test Properties**

Model, Manufacturer	Dimensions [mm]	IMEI	DUT Type
Device,	100.0 x 100.0 x 100.0		Phone

**Exposure Conditions**

Phantom Section	Position, Test Distance [mm]	Band	Group, UID	Frequency [MHz], Channel Number	Conversion Factor
5G	FRONT, 5.55	Validation band	CW, 0--	30000.0, 30000	1.0

**Hardware Setup**

Phantom	Medium	Probe, Calibration Date	DAE, Calibration Date
mmWave - xxxx	Air -	EUmmWV4 - SN9602_F1-55GHz, 2024-03-12	DAE4 Sn 480, 2023-09-19

**Scans Setup**

Scan Type	5G Scan
Grid Extents [mm]	60.0 x 60.0
Grid Steps [lambda]	0.25 x 0.25
Sensor Surface [mm]	5.55
MAIA	N/A

**Measurement Results**

Scan Type	5G Scan
Date	2022-06-07, 09:02
Avg. Area [cm <sup>2</sup> ]	4.00
psPDtot+ [W/m <sup>2</sup> ]	27.2
psPDmod+ [W/m <sup>2</sup> ]	27.5
E <sub>max</sub> [V/m]	115

