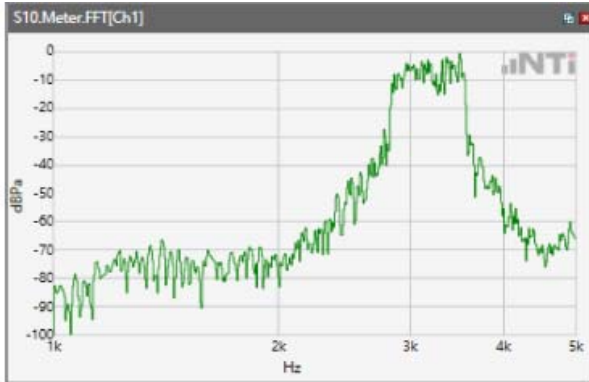
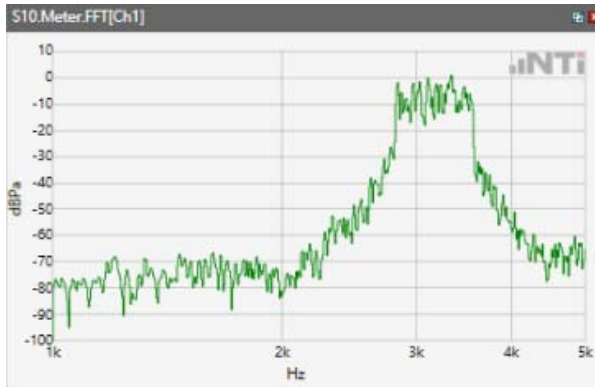


ANSI/TIA 5050-2018 \ 2N HAC ON \ WB 12.65kbps\ 5.2 Receive path – distortion and noise\ WLAN 5.5GHz

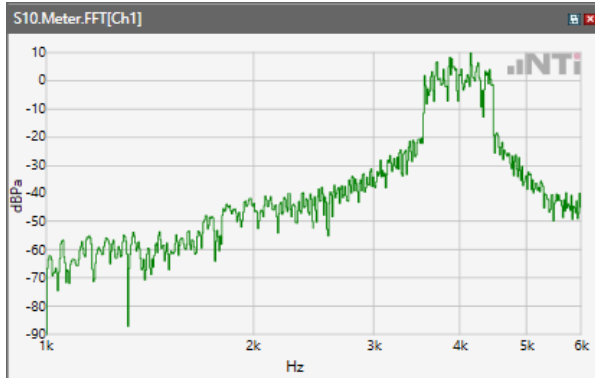


ANSI/TIA 5050-2018 \ 2N HAC ON \ WB 12.65kbps\ 5.2 Receive path – distortion and noise\ WLAN 5.8GHz

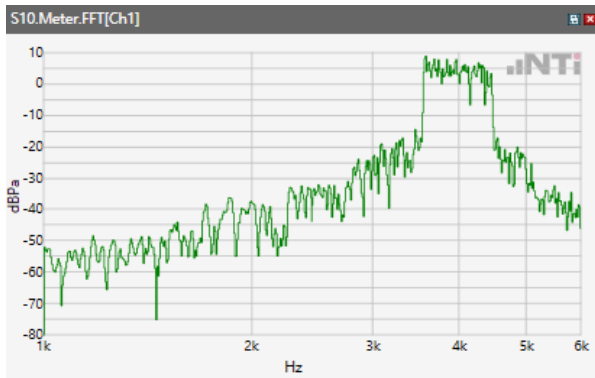


Receive path - distortion and noise 4000Hz WB only

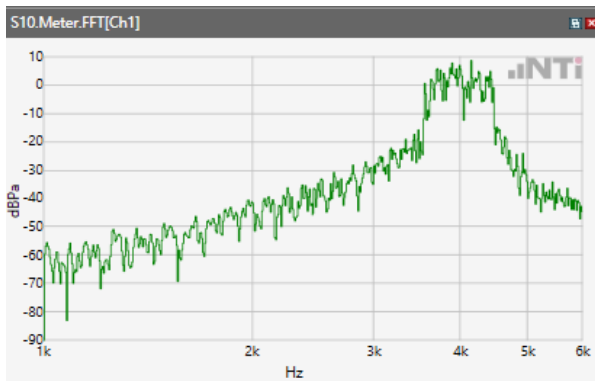
ANSI/TIA 5050-2018 \ 2N HAC ON \ WB 12.65kbps\ 5.2 Receive path – distortion and noise\GSM 850



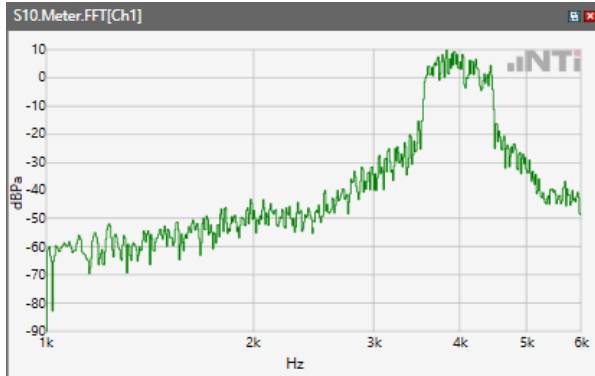
ANSI/TIA 5050-2018 \ 2N HAC ON \ WB 12.65kbps\ 5.2 Receive path – distortion and noise\GSM 1900



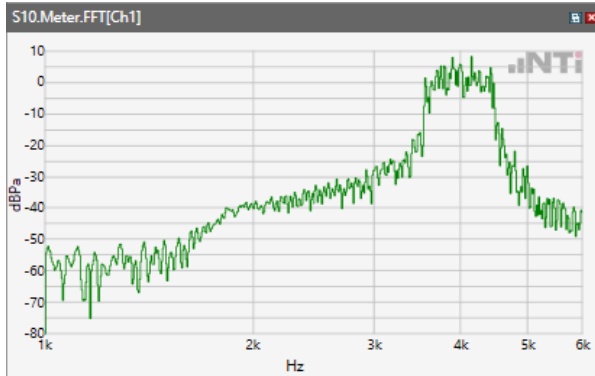
ANSI/TIA 5050-2018 \ 2N HAC ON \ WB 12.65kbps\ 5.2 Receive path – distortion and noise\WCDM Band II



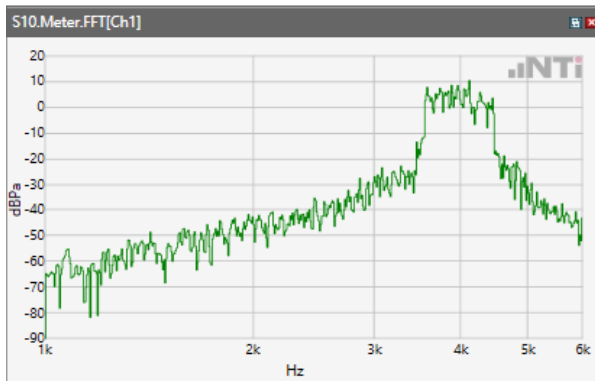
ANSI/TIA 5050-2018 \ 2N HAC ON \ WB 12.65kbps\ 5.2 Receive path – distortion and noise\ WCDM Band IV



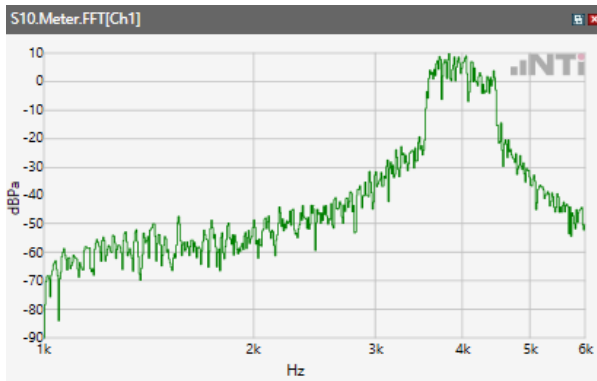
ANSI/TIA 5050-2018 \ 2N HAC ON \ WB 12.65kbps\ 5.2 Receive path – distortion and noise\ WCDM Band V



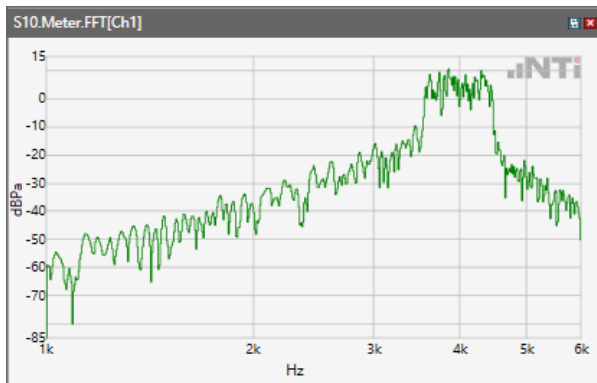
ANSI/TIA 5050-2018 \ 2N HAC ON \ WB 12.65kbps\ 5.2 Receive path – distortion and noise\LTE Band 2



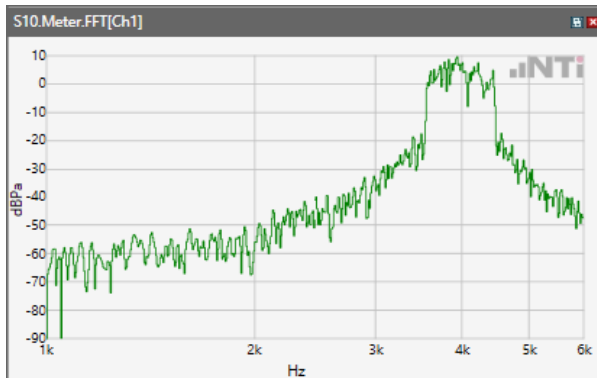
ANSI/TIA 5050-2018 \ 2N HAC ON \ WB 12.65kbps\ 5.2 Receive path – distortion and noise\ LTE Band 4



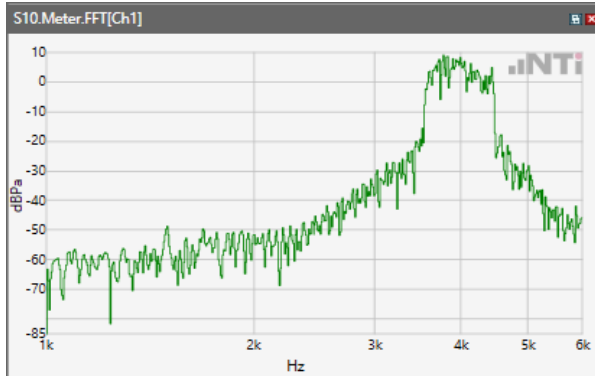
ANSI/TIA 5050-2018 \ 2N HAC ON \ WB 12.65kbps\ 5.2 Receive path – distortion and noise\ LTE Band 5



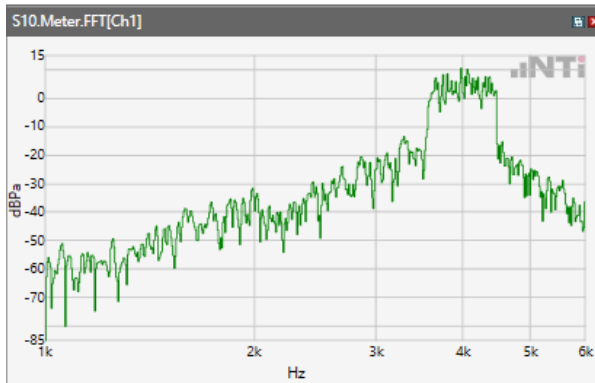
ANSI/TIA 5050-2018 \ 2N HAC ON \ WB 12.65kbps\ 5.2 Receive path – distortion and noise\ LTE Band 7



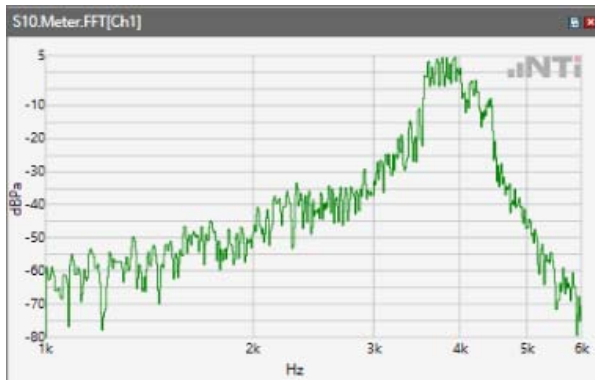
ANSI/TIA 5050-2018 \ 2N HAC ON \ WB 12.65kbps\ 5.2 Receive path – distortion and noise\ LTE Band 12



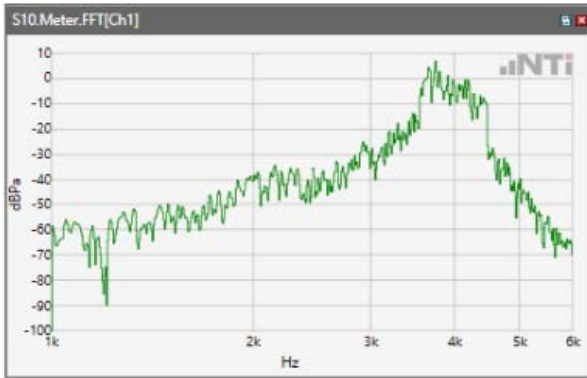
ANSI/TIA 5050-2018 \ 2N HAC ON \ WB 12.65kbps\ 5.2 Receive path – distortion and noise\ LTE Band 13



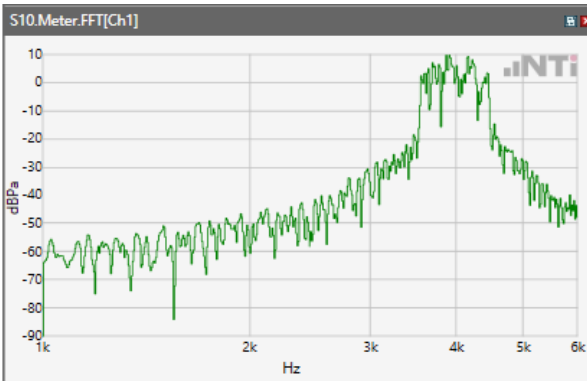
ANSI/TIA 5050-2018 \ 2N HAC ON \ WB 12.65kbps\ 5.2 Receive path – distortion and noise\ LTE Band 17



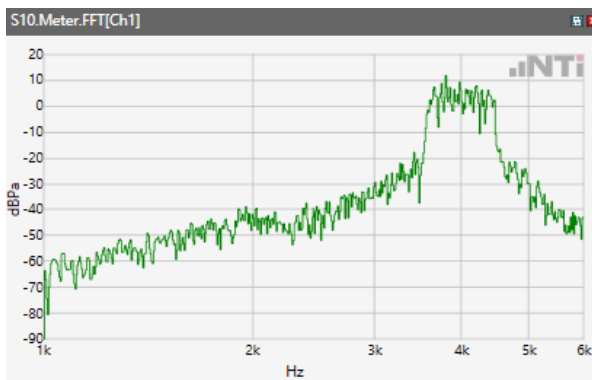
ANSI/TIA 5050-2018 \ 2N HAC ON \ WB 12.65kbps\ 5.2 Receive path – distortion and noise\ LTE Band 25



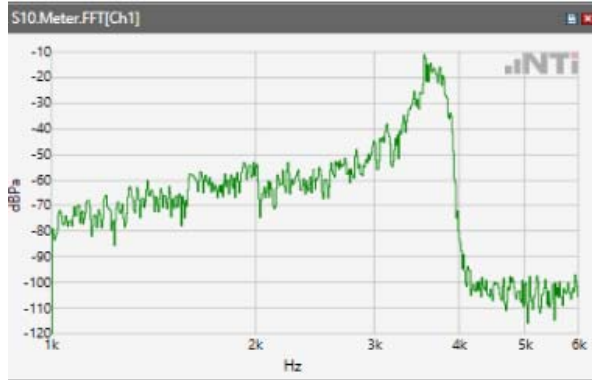
ANSI/TIA 5050-2018 \ 2N HAC ON \ WB 12.65kbps\ 5.2 Receive path – distortion and noise\ LTE Band 66



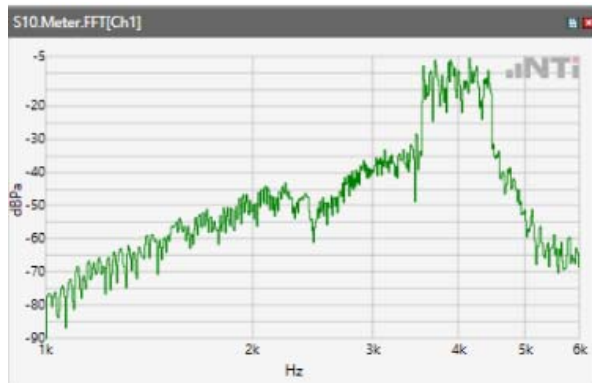
ANSI/TIA 5050-2018 \ 2N HAC ON \ WB 12.65kbps\ 5.2 Receive path – distortion and noise\ LTE Band 71



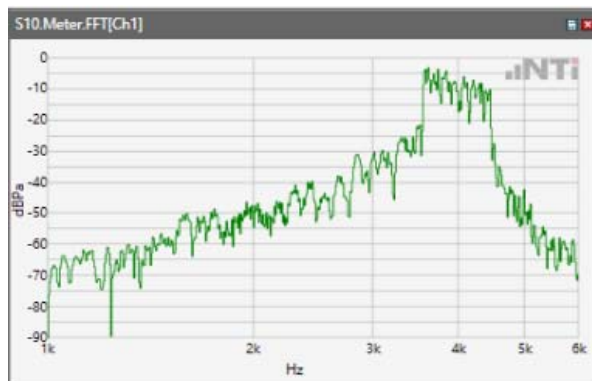
ANSI/TIA 5050-2018 \ 2N HAC ON \ WB 12.65kbps\ 5.2 Receive path – distortion and noise\WLAN
2.4GHz



ANSI/TIA 5050-2018 \ 2N HAC ON \ WB 12.65kbps\ 5.2 Receive path – distortion and noise\ WLAN
5.2GHz



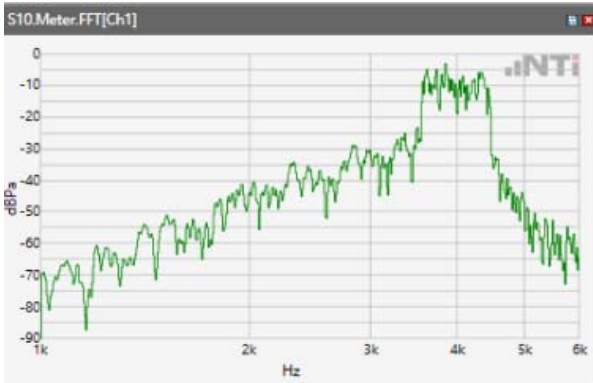
ANSI/TIA 5050-2018 \ 2N HAC ON \ WB 12.65kbps\ 5.2 Receive path – distortion and noise\ WLAN
5.3GHz



ANSI/TIA 5050-2018 \ 2N HAC ON \ WB 12.65kbps\ 5.2 Receive path – distortion and noise\ WLAN 5.5GHz

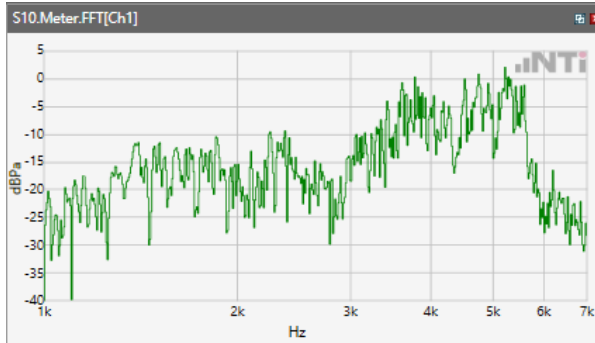


ANSI/TIA 5050-2018 \ 2N HAC ON \ WB 12.65kbps\ 5.2 Receive path – distortion and noise\ WLAN 5.8GHz

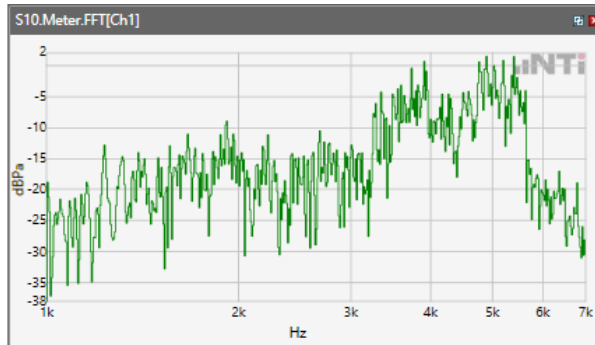


Receive path - distortion and noise 5000Hz WB only

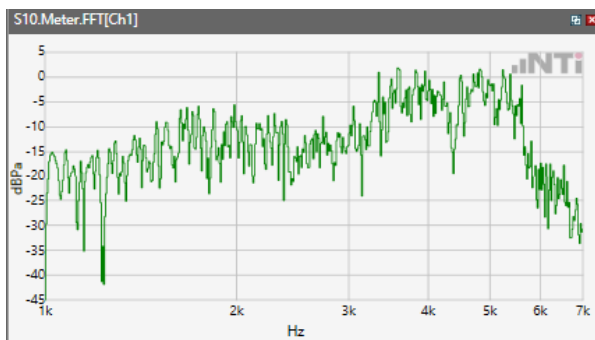
ANSI/TIA 5050-2018 \ 2N HAC ON \ WB 12.65kbps\ 5.2 Receive path – distortion and noise\GSM 850



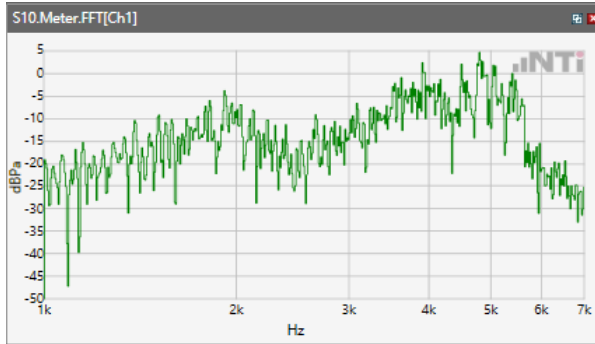
ANSI/TIA 5050-2018 \ 2N HAC ON \ WB 12.65kbps\ 5.2 Receive path – distortion and noise\GSM 1900



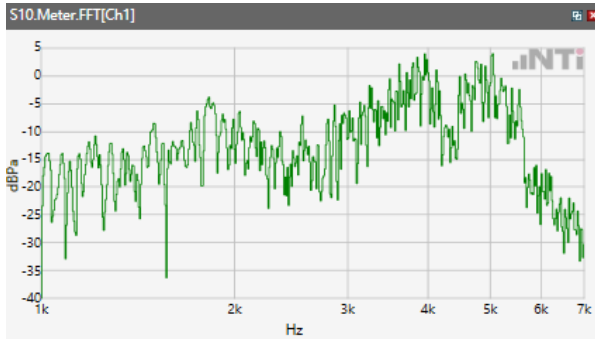
ANSI/TIA 5050-2018 \ 2N HAC ON \ WB 12.65kbps\ 5.2 Receive path – distortion and noise\WCDM Band II



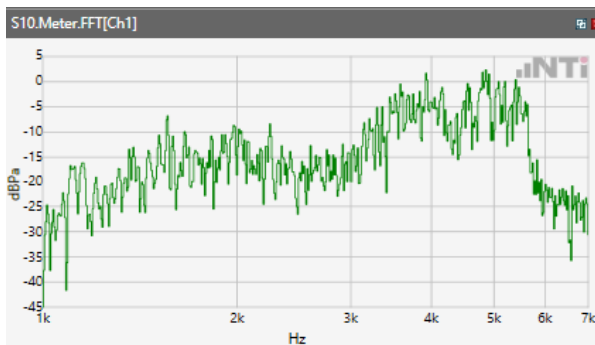
ANSI/TIA 5050-2018 \ 2N HAC ON \ WB 12.65kbps\ 5.2 Receive path – distortion and noise\ WCDM Band IV



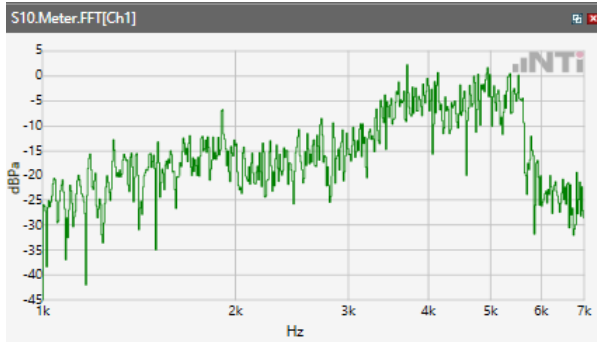
ANSI/TIA 5050-2018 \ 2N HAC ON \ WB 12.65kbps\ 5.2 Receive path – distortion and noise\ WCDM Band V



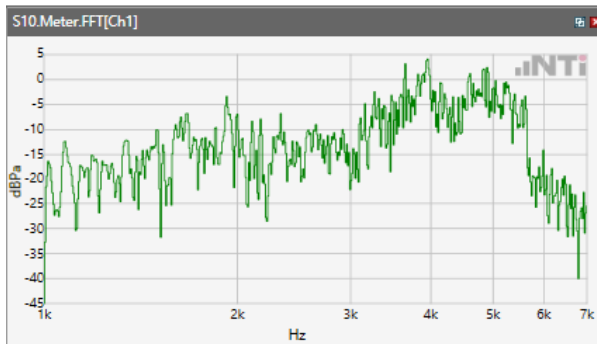
ANSI/TIA 5050-2018 \ 2N HAC ON \ WB 12.65kbps\ 5.2 Receive path – distortion and noise\ LTE Band 2



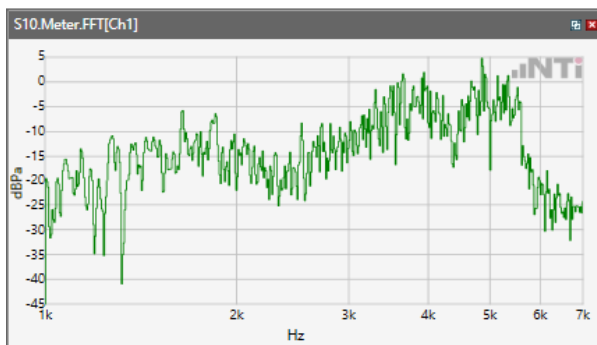
ANSI/TIA 5050-2018 \ 2N HAC ON \ WB 12.65kbps\ 5.2 Receive path – distortion and noise\ LTE Band 4



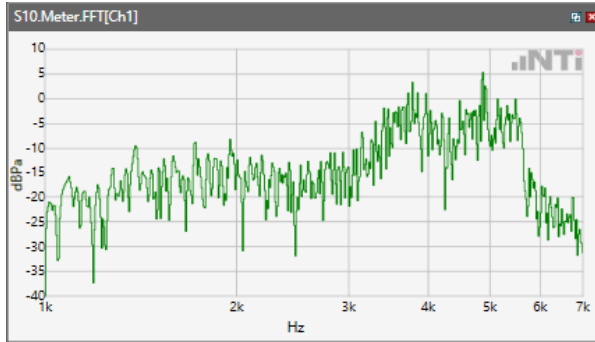
ANSI/TIA 5050-2018 \ 2N HAC ON \ WB 12.65kbps\ 5.2 Receive path – distortion and noise\ LTE Band 5



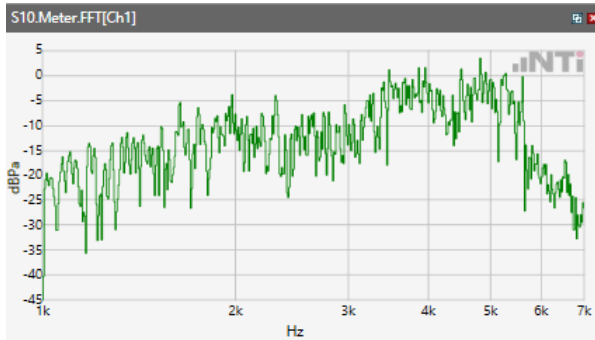
ANSI/TIA 5050-2018 \ 2N HAC ON \ WB 12.65kbps\ 5.2 Receive path – distortion and noise\ LTE Band 7



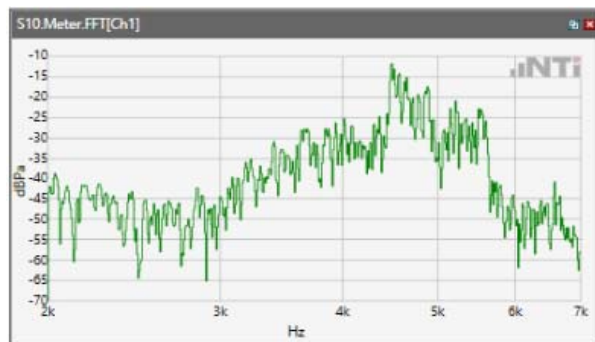
ANSI/TIA 5050-2018 \ 2N HAC ON \ WB 12.65kbps\ 5.2 Receive path – distortion and noise\ LTE Band 12



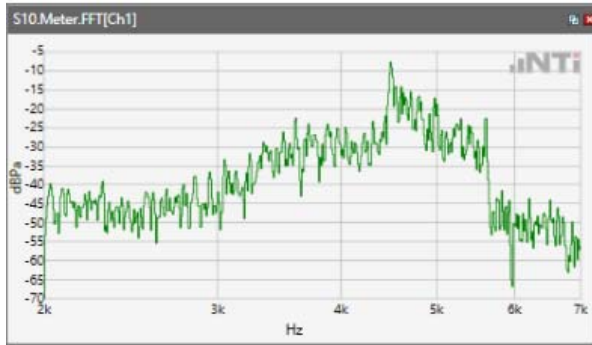
ANSI/TIA 5050-2018 \ 2N HAC ON \ WB 12.65kbps\ 5.2 Receive path – distortion and noise\ LTE Band 13



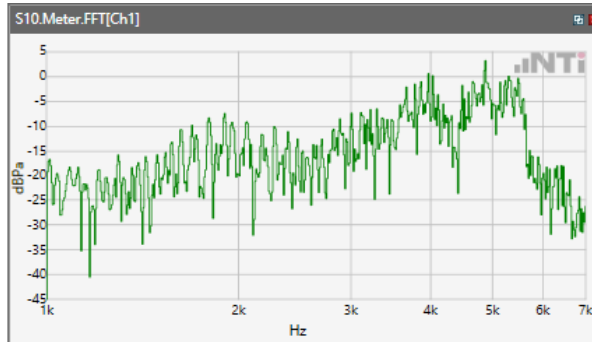
ANSI/TIA 5050-2018 \ 2N HAC ON \ WB 12.65kbps\ 5.2 Receive path – distortion and noise\ LTE Band 17



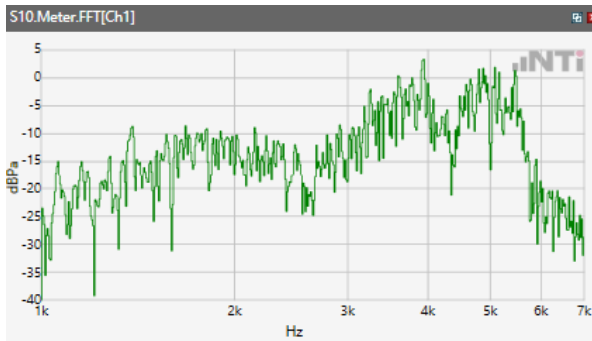
ANSI/TIA 5050-2018 \ 2N HAC ON \ WB 12.65kbps\ 5.2 Receive path – distortion and noise\ LTE Band 25



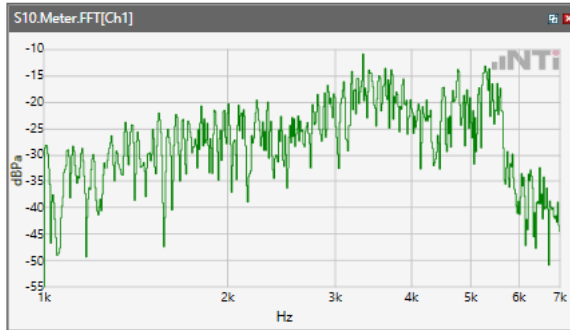
ANSI/TIA 5050-2018 \ 2N HAC ON \ WB 12.65kbps\ 5.2 Receive path – distortion and noise\ LTE Band 66



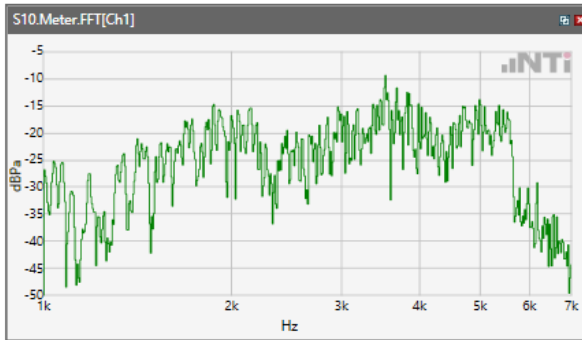
ANSI/TIA 5050-2018 \ 2N HAC ON \ WB 12.65kbps\ 5.2 Receive path – distortion and noise\ LTE Band 71



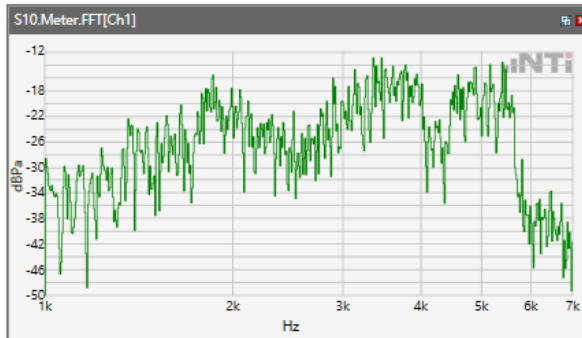
ANSI/TIA 5050-2018 \ 2N HAC ON \ WB 12.65kbps\ 5.2 Receive path – distortion and noise\WLAN
2.4GHz



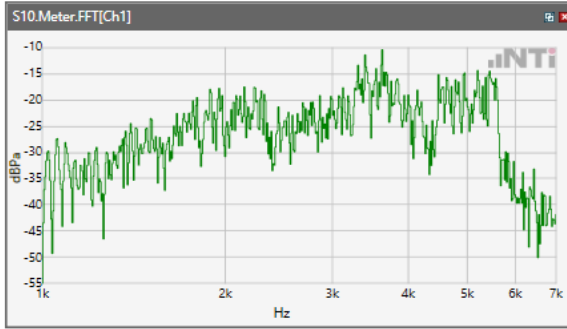
ANSI/TIA 5050-2018 \ 2N HAC ON \ WB 12.65kbps\ 5.2 Receive path – distortion and noise\ WLAN
5.2GHz



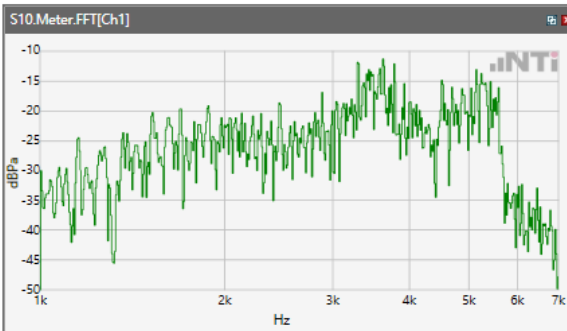
ANSI/TIA 5050-2018 \ 2N HAC ON \ WB 12.65kbps\ 5.2 Receive path – distortion and noise\ WLAN
5.3GHz



ANSI/TIA 5050-2018 \ 2N HAC ON \ WB 12.65kbps\ 5.2 Receive path – distortion and noise\ WLAN
5.5GHz



ANSI/TIA 5050-2018 \ 2N HAC ON \ WB 12.65kbps\ 5.2 Receive path – distortion and noise\ WLAN
5.8GHz

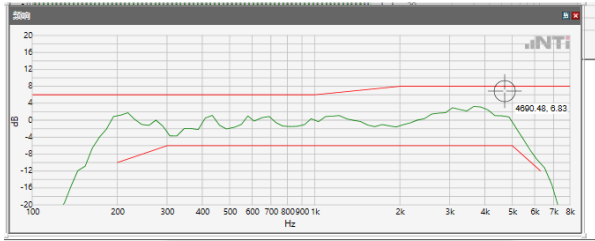


5.2 Receive path – distortion and noise

The distortion and noise test results data are referred to Annex C.

5.3 Receive Acoustic Frequency response Performance

ANSI/TIA 5050-2018 \ 2N HAC ON \ WB 12.65kbps \ GSM 850



Absolute minimal distance

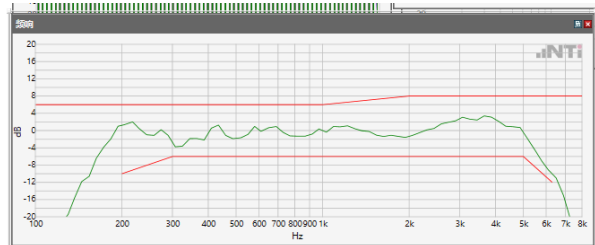
OK

OK

Limits

	lower
Run 1	Fit into tolerance

ANSI/TIA 5050-2018 \ 2N HAC ON \ WB 12.65kbps \ GSM 1900



Absolute minimal distance

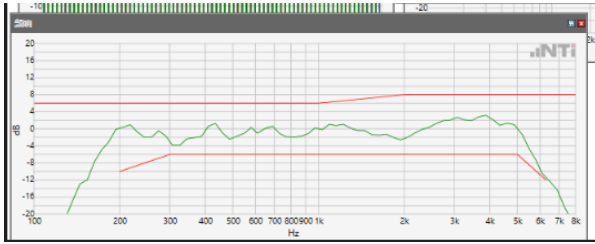
OK

OK

Limits

	lower
Run 1	Fit into tolerance

ANSI/TIA 5050-2018 \ 2N HAC ON \ WB 12.65kbps \ WCDMA Band II



Absolute minimal distance

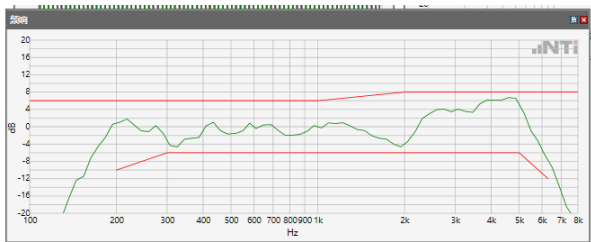
OK

OK

Limits

	lower
Run 1	Fit into tolerance

ANSI/TIA 5050-2018 \ 2N HAC ON \ WB 12.65kbps \ WCDMA Band IV



Absolute minimal distance

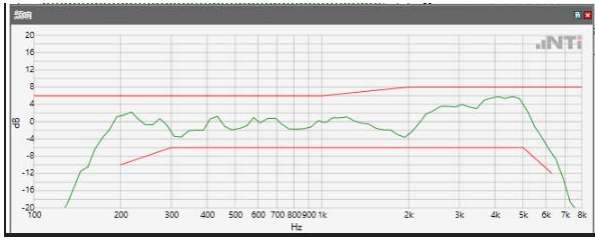
OK

OK

Limits

	lower
Run 1	Fit into tolerance

ANSI/TIA 5050-2018 \ 2N HAC ON \ WB 12.65kbps \ WCDMA Band V



Absolute minimal distance

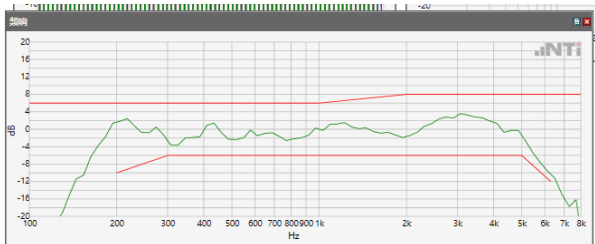
OK

OK

Limits

	lower
Run 1	Fit into tolerance

ANSI/TIA 5050-2018 \ 2N HAC ON \ WB 12.65kbps \ LTE Band 2



Absolute minimal distance

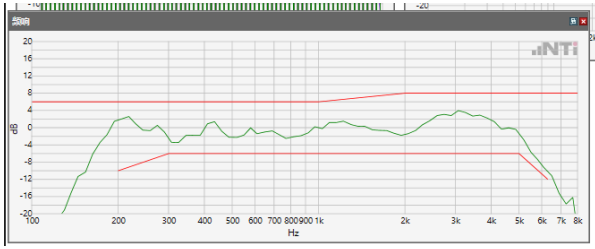
OK

OK

Limits

	lower
Run 1	Fit into tolerance

ANSI/TIA 5050-2018 \ 2N HAC ON \ WB 12.65kbps \ LTE Band 4



Absolute minimal distance

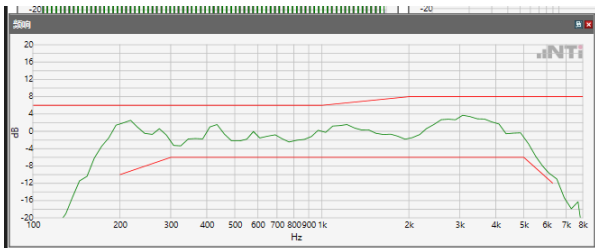
OK

OK

Limits

	lower
Run 1	Fit into tolerance

ANSI/TIA 5050-2018 \ 2N HAC ON \ WB 12.65kbps \ LTE Band 5



Absolute minimal distance

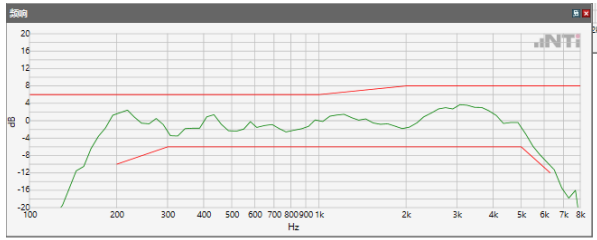
OK

OK

Limits

	lower
Run 1	Fit into tolerance

ANSI/TIA 5050-2018 \ 2N HAC ON \ WB 12.65kbps \ LTE Band 7



Absolute minimal distance

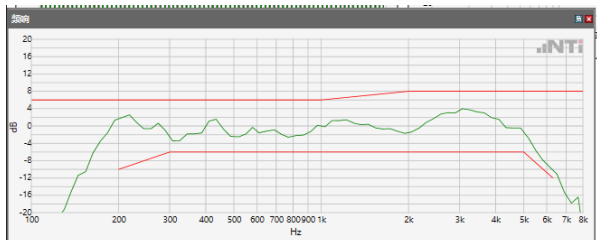
OK

OK

Limits

	lower
Run 1	Fit into tolerance

ANSI/TIA 5050-2018 \ 2N HAC ON \ WB 12.65kbps \ LTE Band 12



Absolute minimal distance

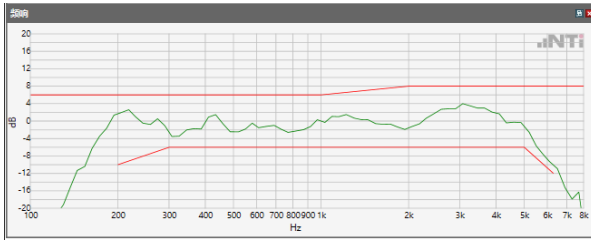
OK

OK

Limits

	lower
Run 1	Fit into tolerance

ANSI/TIA 5050-2018 \ 2N HAC ON \ WB 12.65kbps \ LTE Band 13



Absolute minimal distance

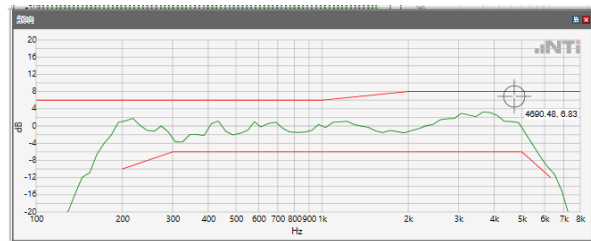
OK

OK

Limits

	lower
Run 1	Fit into tolerance

ANSI/TIA 5050-2018 \ 2N HAC ON \ WB 12.65kbps \ LTE Band 17



Absolute minimal distance

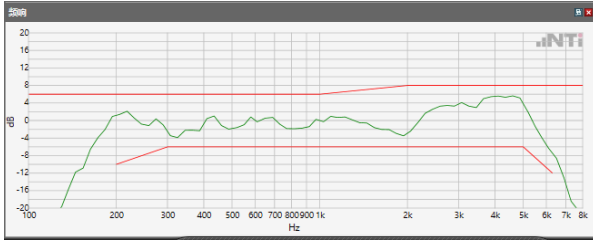
OK

OK

Limits

	lower
Run 1	Fit into tolerance

ANSI/TIA 5050-2018 \ 2N HAC ON \ WB 12.65kbps \ LTE Band 25



Absolute minimal distance

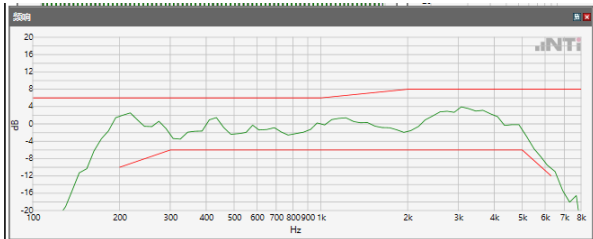
OK

OK

Limits

	lower
Run 1	Fit into tolerance

ANSI/TIA 5050-2018 \ 2N HAC ON \ WB 12.65kbps \ LTE Band 66



Absolute minimal distance

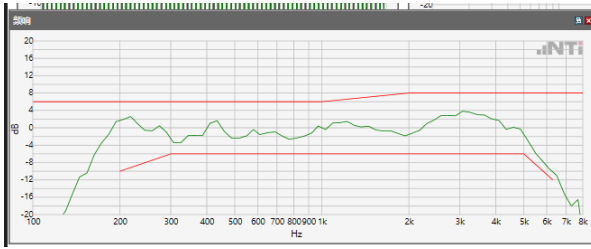
OK

OK

Limits

	lower
Run 1	Fit into tolerance

ANSI/TIA 5050-2018 \ 2N HAC ON \ WB 12.65kbps \ LTE Band 71



Absolute minimal distance

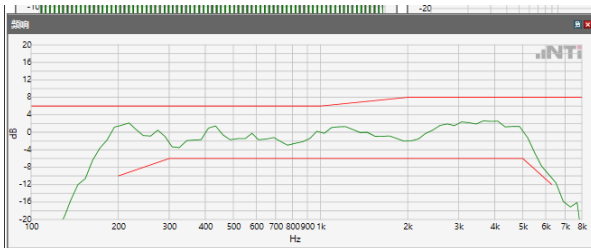
OK

OK

Limits

	lower
Run 1	Fit into tolerance

ANSI/TIA 5050-2018 \ 2N HAC ON \ WB 12.65kbps \ WLAN 2.4GHz



Absolute minimal distance

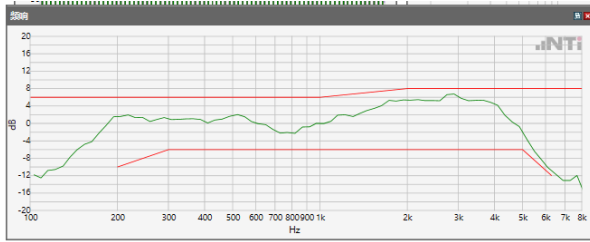
OK

OK

Limits

	lower
Run 1	Fit into tolerance

ANSI/TIA 5050-2018 \ 2N HAC ON \ WB 12.65kbps \ WLAN 5.2GHz



Absolute minimal distance

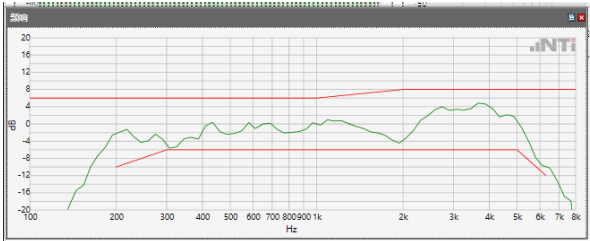
OK

OK

Limits

	lower
Run 1	Fit into tolerance

ANSI/TIA 5050-2018 \ 2N HAC ON \ WB 12.65kbps \ WLAN 5.3GHz



Absolute minimal distance

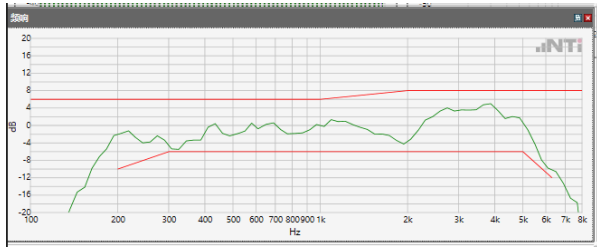
OK

OK

Limits

	lower
Run 1	Fit into tolerance

ANSI/TIA 5050-2018 \ 2N HAC ON \ WB 12.65kbps \ WLAN 5.5GHz



Absolute minimal distance

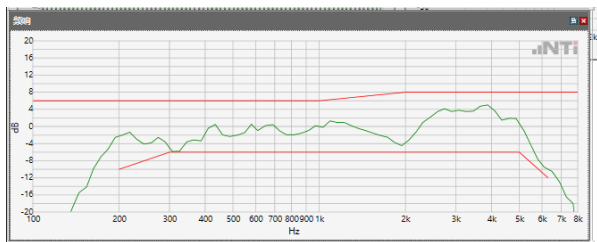
OK

OK

Limits

	lower
Run 1	Fit into tolerance

ANSI/TIA 5050-2018 \ 2N HAC ON \ WB 12.65kbps \ WLAN 5.8GHz



Absolute minimal distance

OK

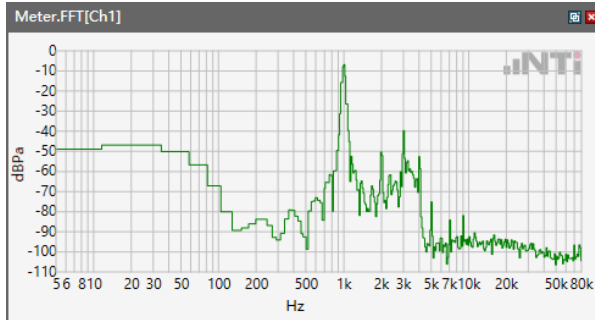
OK

Limits

	lower
Run 1	Fit into tolerance

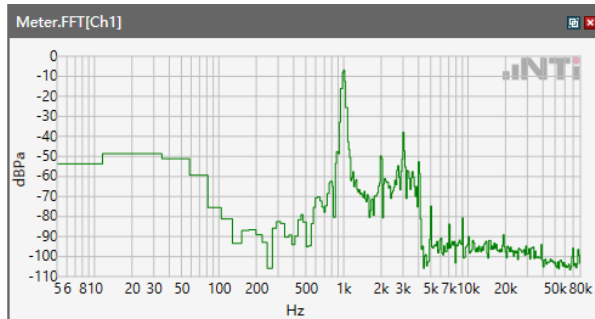
5.1 Receive Volume Control Performance 2N---EVS NB

ANSI/TIA 5050-2018 \ 2N HAC ON \ EVS NB 24.4 kbps\LTE Band 2



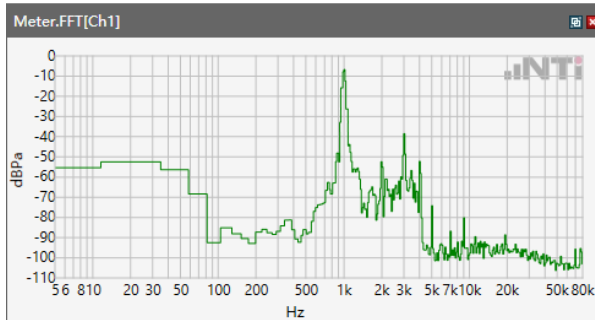
Speech Level RCV: 86.64 dB[SPL]

ANSI/TIA 5050-2018 \ 2N HAC ON \ EVS NB 24.4 kbps\ LTE Band 4



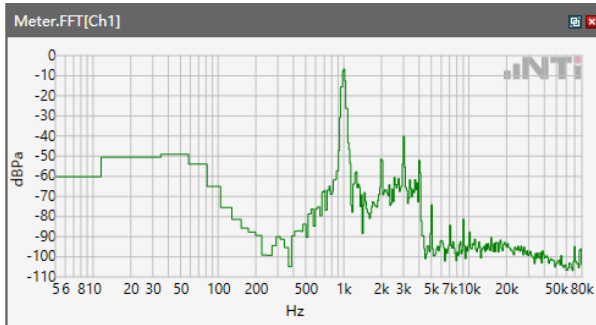
Speech Level RCV: 86.83 dB[SPL]

ANSI/TIA 5050-2018 \ 2N HAC ON \ EVS NB 24.4 kbps\LTE Band 5



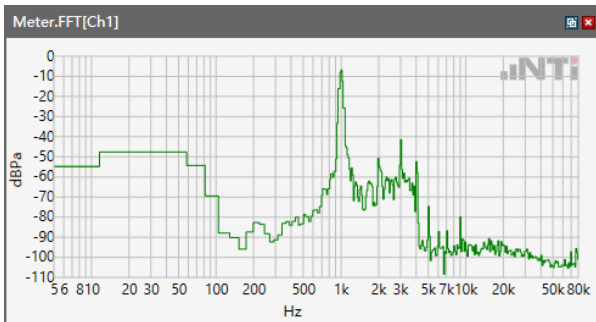
Speech Level RCV: 86.48 dB[SPL]

ANSI/TIA 5050-2018 \ 2N HAC ON \ EVS NB 24.4 kbps\LTE Band 7



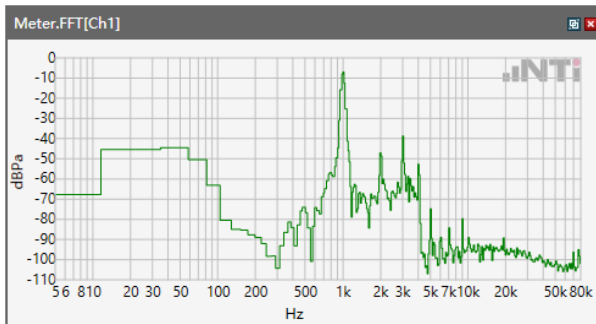
Speech Level RCV: 86.69 dB[SPL]

ANSI/TIA 5050-2018 \ 2N HAC ON \ EVS NB 24.4 kbps\ LTE Band 12



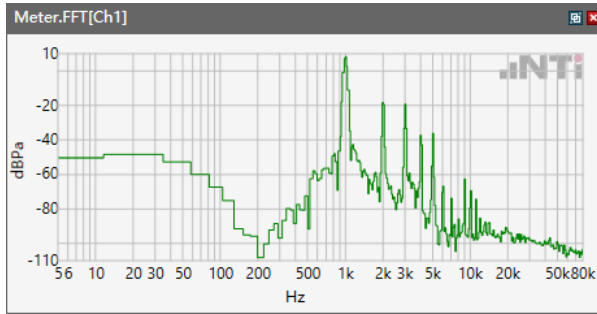
Speech Level RCV: 86.55 dB[SPL]

ANSI/TIA 5050-2018 \ 2N HAC ON \ EVS NB 24.4 kbps\LTE Band 13



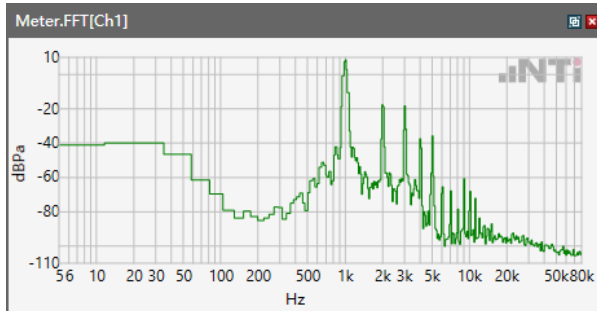
Speech Level RCV: 86.58 dB[SPL]

ANSI/TIA 5050-2018 \ 2N HAC ON \ EVS NB 24.4 kbps\ LTE Band 17



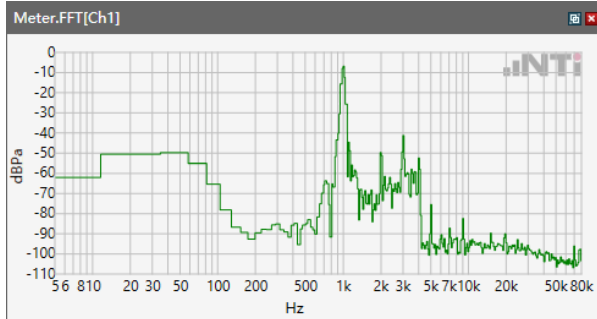
Speech Level RCV: 86.54 dB[SPL]

ANSI/TIA 5050-2018 \ 2N HAC ON \ EVS NB 24.4 kbps\ LTE Band 25



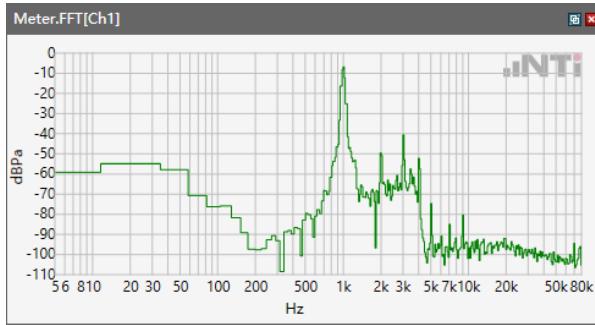
Speech Level RCV: 86.43 dB[SPL]

ANSI/TIA 5050-2018 \ 2N HAC ON \ EVS NB 24.4 kbps\ LTE Band 66



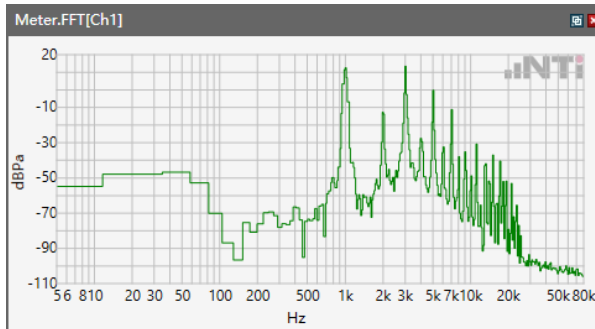
Speech Level RCV: 86.75 dB[SPL]

ANSI/TIA 5050-2018 \ 2N HAC ON \ EVS NB 24.4 kbps\LTE Band 71



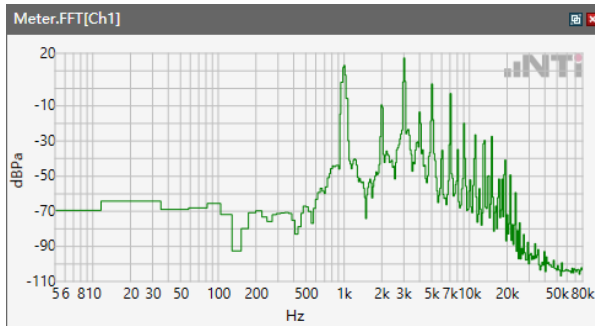
Speech Level RCV: 86.23 dB[SPL]

ANSI/TIA 5050-2018 \ 2N HAC ON \ EVS NB 24.4 kbps\WLAN 2.4GHz



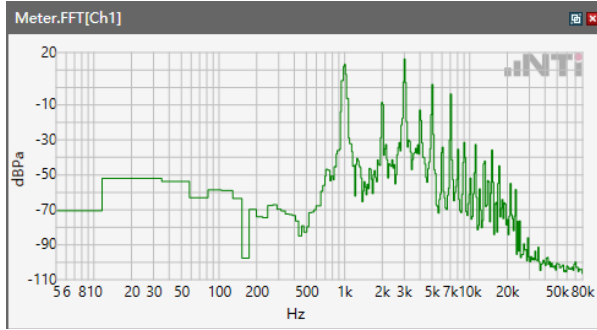
Speech Level RCV: 106.2 dB[SPL]

ANSI/TIA 5050-2018 \ 2N HAC ON \ EVS NB 24.4 kbps\WLAN 5.2GHz



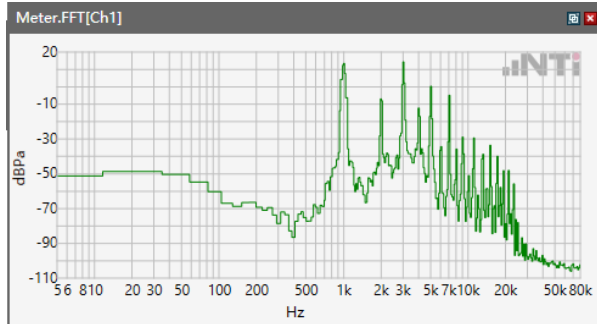
Speech Level RCV: 106.8 dB[SPL]

ANSI/TIA 5050-2018 \ 2N HAC ON \ EVS NB 24.4 kbps\WLAN 5.3 GHz



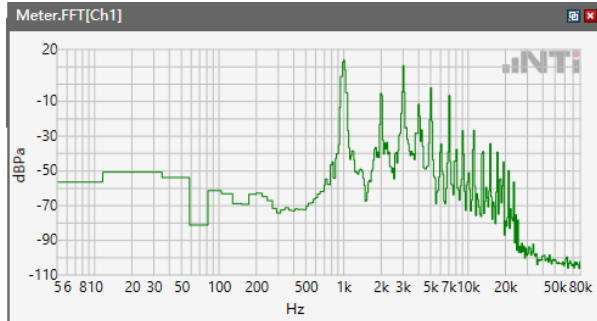
Speech Level RCV: 106.2 dB[SPL]

ANSI/TIA 5050-2018 \ 2N HAC ON \ EVS NB 24.4 kbps\WLAN 5.5 GHz



Speech Level RCV: 105.7 dB[SPL]

ANSI/TIA 5050-2018 \ 2N HAC ON \ EVS NB 24.4 kbps\WLAN 5.8 GHz



Speech Level RCV: 106.2 dB[SPL]

5.1.1 -1 Conversation Gain 2N

ANSI/TIA 5050-2018 \ 2N HAC ON \ EVS NB 24.4 kbps\LTE Band 2

Correction

rcv_vol_wb	86.64 dB[SPL]	2024.03.20	Measured	5.1 Receive Volume Control Performance 2N
------------	---------------	------------	----------	---

rcv_vol_wb-70

Calculated Value: 16.64 dB OK

Ok

Limits

	lower
Run 1	6.00 dB

ANSI/TIA 5050-2018 \ 2N HAC ON \ EVS NB 24.4 kbps\ LTE Band 4

Correction

rcv_vol_wb	86.83 dB[SPL]	2024.03.20	Measured	5.1 Receive Volume Control Performance 2N
------------	---------------	------------	----------	---

rcv_vol_wb-70

Calculated Value: 16.83 dB OK

Ok

Limits

	lower
Run 1	6.00 dB

ANSI/TIA 5050-2018 \ 2N HAC ON \ EVS NB 24.4 kbps\ LTE Band 5

Correction

rcv_vol_wb	86.48 dB[SPL]	2024.03.20	Measured	5.1 Receive Volume Control Performance 2N
------------	---------------	------------	----------	---

rcv_vol_wb-70

Calculated Value: 16.48 dB OK

Ok**Limits**

	lower
Run 1	6.00 dB

ANSI/TIA 5050-2018 \ 2N HAC ON \ EVS NB 24.4 kbps\ LTE Band 7

Correction

rcv_vol_wb	86.69 dB[SPL]	2024.03.20	Measured	5.1 Receive Volume Control Performance 2N
------------	---------------	------------	----------	---

rcv_vol_wb-70

Calculated Value: 16.69 dB OK

Ok**Limits**

	lower
Run 1	6.00 dB

ANSI/TIA 5050-2018 \ 2N HAC ON \ EVS NB 24.4 kbps\LTE Band 12

Correction

rcv_vol_wb	86.55 dB[SPL]	2024.03.20	Measured	5.1 Receive Volume Control Performance 2N
------------	---------------	------------	----------	---

rcv_vol_wb-70

Calculated Value: 16.55 dB OK

Ok**Limits**

	lower
Run 1	6.00 dB

ANSI/TIA 5050-2018 \ 2N HAC ON \ EVS NB 24.4 kbps\LTE Band 13

Correction

rcv_vol_wb	86.58 dB[SPL]	2024.03.20	Measured	5.1 Receive Volume Control Performance 2N
------------	---------------	------------	----------	---

rcv_vol_wb-70

Calculated Value: 16.58 dB OK

Ok**Limits**

	lower
Run 1	6.00 dB



ANSI/TIA 5050-2018 \ 2N HAC ON \ EVS NB 24.4 kbps\LTE Band 17

Correction

rcv_vol_wb	86.54 dB[SPL]	2024.04.03	Measured	5.1 Receive Volume Control Performance 2N
------------	---------------	------------	----------	---

rcv_vol_wb-70

Calculated Value: 16.54 dB OK

Ok

Limits

	lower
Run 1	6.00 dB

ANSI/TIA 5050-2018 \ 2N HAC ON \ EVS NB 24.4 kbps\LTE Band 25

Correction

rcv_vol_wb	86.43 dB[SPL]	2024.04.03	Measured	5.1 Receive Volume Control Performance 2N
------------	---------------	------------	----------	---

rcv_vol_wb-70

Calculated Value: 16.43 dB OK

Ok

Limits

	lower
Run 1	6.00 dB

ANSI/TIA 5050-2018 \ 2N HAC ON \ EVS NB 24.4 kbps\LTE Band 66

Correction

rcv_vol_wb	86.75 dB[SPL]	2024.03.20	Measured	5.1 Receive Volume Control Performance 2N
------------	---------------	------------	----------	---

rcv_vol_wb-70

Calculated Value: 16.75 dB OK

Ok**Limits**

	lower
Run 1	6.00 dB

ANSI/TIA 5050-2018 \ 2N HAC ON \ EVS NB 24.4 kbps\LTE Band 71

Correction

rcv_vol_wb	86.23 dB[SPL]	2024.03.22	Measured	5.1 Receive Volume Control Performance 2N
------------	---------------	------------	----------	---

rcv_vol_wb-70

Calculated Value: 16.23 dB OK

Ok**Limits**

	lower
Run 1	6.00 dB



ANSI/TIA 5050-2018 \ 2N HAC ON \ EVS NB 24.4 kbps\WLAN 2.4GHz

Correction

rcv_vol_wb	106.3 dB[SPL]	2024.03.26	Measured	5.1 Receive Volume Control Performance 2N
------------	---------------	------------	----------	---

rcv_vol_wb-70

Calculated Value: 36.3 dB OK

Ok

Limits

	lower
Run 1	6.00 dB

ANSI/TIA 5050-2018 \ 2N HAC ON \ EVS NB 24.4 kbps\WLAN 5.2GHz

Correction

rcv_vol_wb	106.8 dB[SPL]	2024.03.27	Measured	5.1 Receive Volume Control Performance 2N
------------	---------------	------------	----------	---

rcv_vol_wb-70

Calculated Value: 36.8 dB OK

Ok

Limits

	lower
Run 1	6.00 dB

ANSI/TIA 5050-2018 \ 2N HAC ON \ EVS NB 24.4 kbps\WLAN 5.3GHz

Correction

rcv_vol_wb	106.2 dB[SPL]	2024.03.27	Measured	5.1 Receive Volume Control Performance 2N
------------	---------------	------------	----------	---

rcv_vol_wb-70

Calculated Value: 36.2dB OK

Ok**Limits**

	lower
Run 1	6.00 dB

ANSI/TIA 5050-2018 \ 2N HAC ON \ EVS NB 24.4 kbps\WLAN 5.5GHz

Correction

rcv_vol_wb	105.7 dB[SPL]	2024.03.27	Measured	5.1 Receive Volume Control Performance 2N
------------	---------------	------------	----------	---

rcv_vol_wb-70

Calculated Value: 35.7 dB OK

Ok**Limits**

	lower
Run 1	6.00 dB



ANSI/TIA 5050-2018 \ 2N HAC ON \ EVS NB 24.4 kbps\WLAN 5.8GHz

Correction

rcv_vol_wb	106.2 dB[SPL]	2024.03.27	Measured	5.1 Receive Volume Control Performance 2N
------------	---------------	------------	----------	---

rcv_vol_wb-70

Calculated Value: 36.2 dB OK

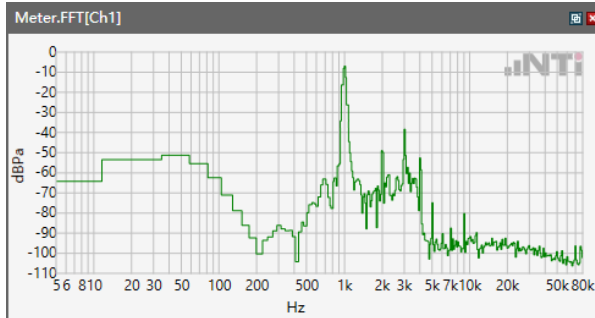
Ok

Limits

	lower
Run 1	6.00 dB

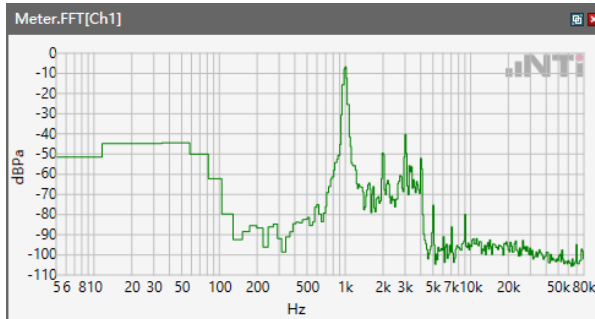
5.1 Receive Volume Control Performance 2N---EVS WB

ANSI/TIA 5050-2018 \ 2N HAC ON \ EVS WB 24.4 kbps\LTE Band 2



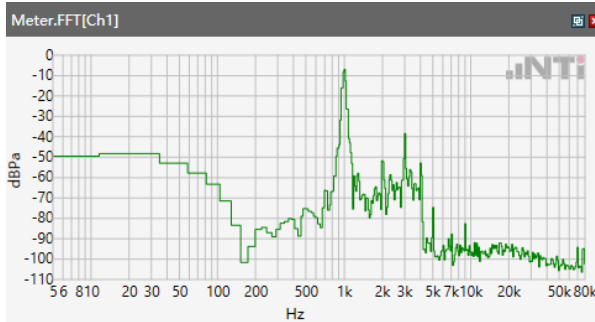
Speech Level RCV: 85.83 dB[SPL]

ANSI/TIA 5050-2018 \ 2N HAC ON \ EVS WB 24.4 kbps\ LTE Band 4



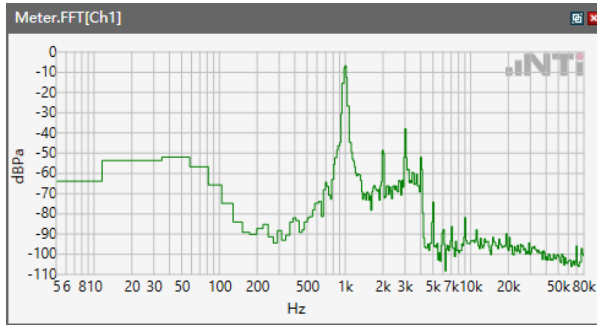
Speech Level RCV: 85.86 dB[SPL]

ANSI/TIA 5050-2018 \ 2N HAC ON \ EVS WB 24.4 kbps\LTE Band 5



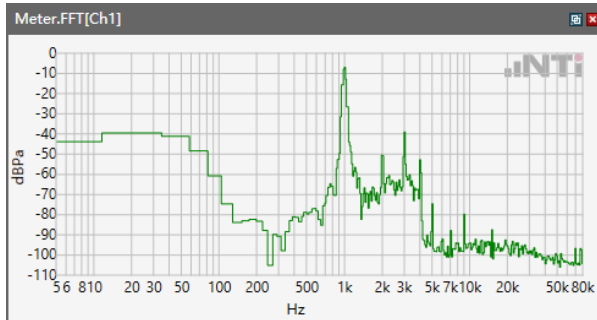
Speech Level RCV: 85.77 dB[SPL]

ANSI/TIA 5050-2018 \ 2N HAC ON \ EVS WB 24.4 kbps\LTE Band 7



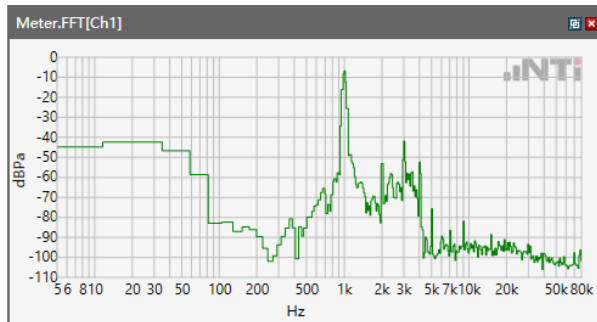
Speech Level RCV: 85.89 dB[SPL]

ANSI/TIA 5050-2018 \ 2N HAC ON \ EVS WB 24.4 kbps\ LTE Band 12



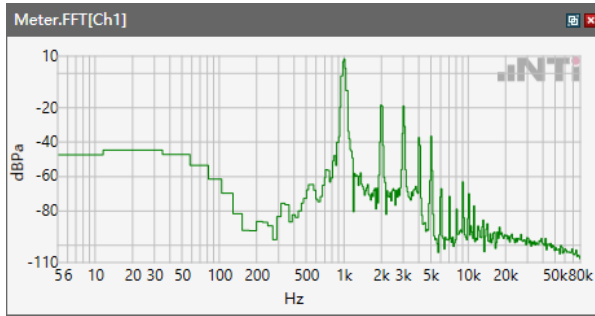
Speech Level RCV: 85.8 dB[SPL]

ANSI/TIA 5050-2018 \ 2N HAC ON \ EVS WB 24.4 kbps\LTE Band 13



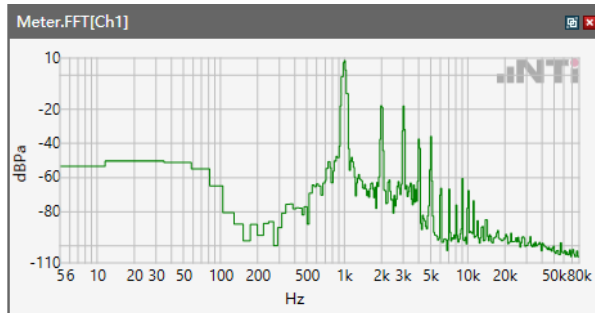
Speech Level RCV: 85.81 dB[SPL]

ANSI/TIA 5050-2018 \ 2N HAC ON \ EVS WB 24.4 kbps\ LTE Band 17



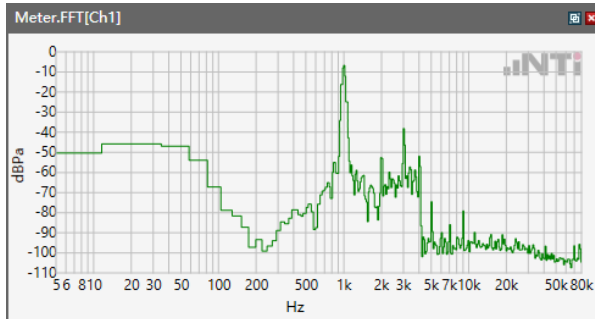
Speech Level RCV: 85.68 dB[SPL]

ANSI/TIA 5050-2018 \ 2N HAC ON \ EVS WB 24.4 kbps\ LTE Band 25



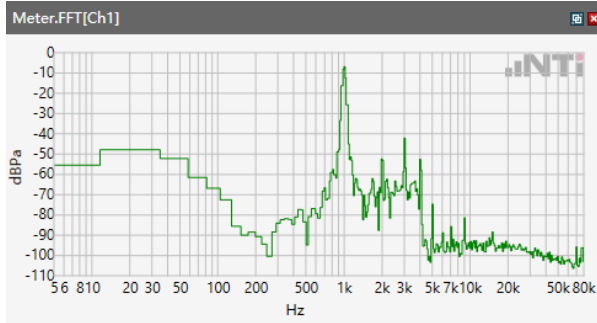
Speech Level RCV: 85.79 dB[SPL]

ANSI/TIA 5050-2018 \ 2N HAC ON \ EVS WB 24.4 kbps\ LTE Band 66



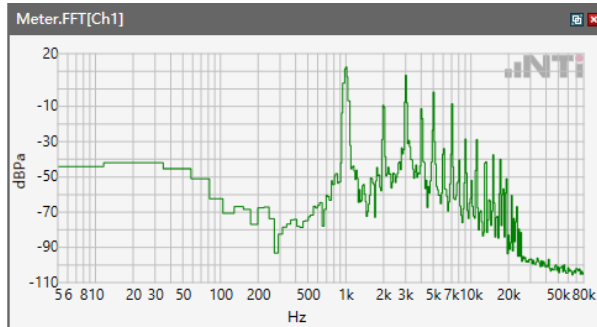
Speech Level RCV: 85.85 dB[SPL]

ANSI/TIA 5050-2018 \ 2N HAC ON \ EVS WB 24.4 kbps\LTE Band 71



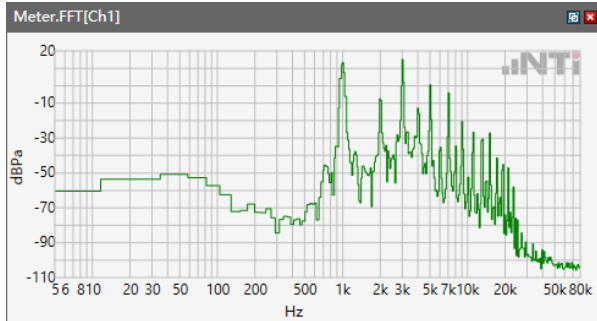
Speech Level RCV: 86.41 dB[SPL]

ANSI/TIA 5050-2018 \ 2N HAC ON \ EVS WB 24.4 kbps \WLAN 2.4GHz



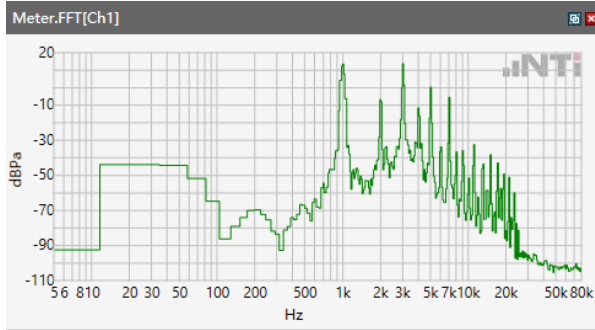
Speech Level RCV: 106.3 dB[SPL]

ANSI/TIA 5050-2018 \ 2N HAC ON \ EVS WB 24.4 kbps \WLAN 5.2GHz



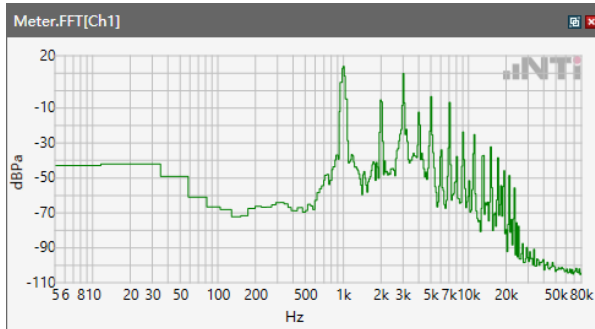
Speech Level RCV: 106.9 dB[SPL]

ANSI/TIA 5050-2018 \ 2N HAC ON \ EVS WB 24.4 kbps \ WLAN 5.3 GHz



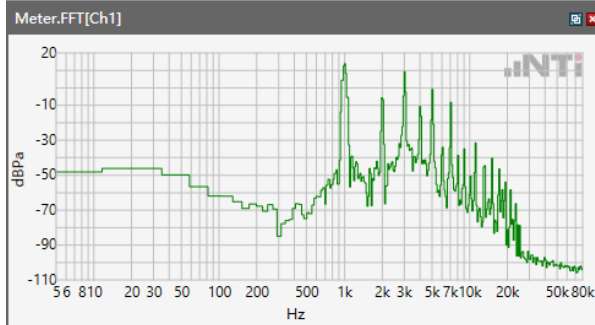
Speech Level RCV: 106.5 dB[SPL]

ANSI/TIA 5050-2018 \ 2N HAC ON \ EVS WB 24.4 kbps \ WLAN 5.5 GHz



Speech Level RCV: 105.8 dB[SPL]

ANSI/TIA 5050-2018 \ 2N HAC ON \ EVS WB 24.4 kbps \ WLAN 5.8 GHz



Speech Level RCV: 106.4 dB[SPL]

5.1.1 -1 Conversation Gain 2N

ANSI/TIA 5050-2018 \ 2N HAC ON \ EVS WB 24.4 kbps\LTE Band 2

Correction

rcv_vol_wb	85.83 dB[SPL]	2024.03.20	Measured	5.1 Receive Volume Control Performance 2N
------------	---------------	------------	----------	---

rcv_vol_wb-70

Calculated Value: 15.83 dB OK

Ok

Limits

	lower
Run 1	6.00 dB

ANSI/TIA 5050-2018 \ 2N HAC ON \ EVS WB 24.4 kbps\LTE Band 4

Correction

rcv_vol_wb	85.86 dB[SPL]	2024.03.20	Measured	5.1 Receive Volume Control Performance 2N
------------	---------------	------------	----------	---

rcv_vol_wb-70

Calculated Value: 15.86 dB OK

Ok

Limits

	lower
Run 1	6.00 dB

ANSI/TIA 5050-2018 \ 2N HAC ON \ EVS WB 24.4 kbps\LTE Band 5

Correction

rcv_vol_wb	85.77 dB[SPL]	2024.03.20	Measured	5.1 Receive Volume Control Performance 2N
------------	---------------	------------	----------	---

rcv_vol_wb-70

Calculated Value: 15.77 dB OK

Ok**Limits**

	lower
Run 1	6.00 dB

ANSI/TIA 5050-2018 \ 2N HAC ON \ EVS WB 24.4 kbps\LTE Band 7

Correction

rcv_vol_wb	85.89 dB[SPL]	2024.03.20	Measured	5.1 Receive Volume Control Performance 2N
------------	---------------	------------	----------	---

rcv_vol_wb-70

Calculated Value: 15.89 dB OK

Ok**Limits**

	lower
Run 1	6.00 dB

ANSI/TIA 5050-2018 \ 2N HAC ON \ EVS WB 24.4 kbps\LTE Band 12

Correction

rcv_vol_wb	85.8 dB[SPL]	2024.03.20	Measured	5.1 Receive Volume Control Performance 2N
------------	--------------	------------	----------	---

rcv_vol_wb-70

Calculated Value: 15.8 dB OK

Ok**Limits**

	lower
Run 1	6.00 dB

ANSI/TIA 5050-2018 \ 2N HAC ON \ EVS WB 24.4 kbps\LTE Band 13

Correction

rcv_vol_wb	85.81 dB[SPL]	2024.03.20	Measured	5.1 Receive Volume Control Performance 2N
------------	---------------	------------	----------	---

rcv_vol_wb-70

Calculated Value: 15.81 dB OK

Ok**Limits**

	lower
Run 1	6.00 dB



ANSI/TIA 5050-2018 \ 2N HAC ON \ EVS WB 24.4 kbps\LTE Band 17

Correction

rcv_vol_wb	85.68 dB[SPL]	2024.04.03	Measured	5.1 Receive Volume Control Performance 2N
------------	---------------	------------	----------	---

rcv_vol_wb-70

Calculated Value: 15.68 dB OK

Ok

Limits

	lower
Run 1	6.00 dB

ANSI/TIA 5050-2018 \ 2N HAC ON \ EVS WB 24.4 kbps\LTE Band 25

Correction

rcv_vol_wb	85.79 dB[SPL]	2024.04.03	Measured	5.1 Receive Volume Control Performance 2N
------------	---------------	------------	----------	---

rcv_vol_wb-70

Calculated Value: 15.79 dB OK

Ok

Limits

	lower
Run 1	6.00 dB

ANSI/TIA 5050-2018 \ 2N HAC ON \ EVS WB 24.4 kbps\LTE Band 66

Correction

rcv_vol_wb	85.85 dB[SPL]	2024.03.20	Measured	5.1 Receive Volume Control Performance 2N
------------	---------------	------------	----------	---

rcv_vol_wb-70

Calculated Value: 15.85 dB OK

Ok

Limits

	lower
Run 1	6.00 dB

ANSI/TIA 5050-2018 \ 2N HAC ON \ EVS WB 24.4 kbps\LTE Band 71

Correction

rcv_vol_wb	86.41 dB[SPL]	2024.03.22	Measured	5.1 Receive Volume Control Performance 2N
------------	---------------	------------	----------	---

rcv_vol_wb-70

Calculated Value: 16.41 dB OK

Ok

Limits

	lower
Run 1	6.00 dB

ANSI/TIA 5050-2018 \ 2N HAC ON \ EVS WB 24.4 kbps\WLAN 2.4GHz

Correction

rcv_vol_wb	106.3 dB[SPL]	2024.03.26	Measured	5.1 Receive Volume Control Performance 2N
------------	---------------	------------	----------	---

rcv_vol_wb-70

Calculated Value: 36.3 dB OK

Ok

Limits

	lower
Run 1	6.00 dB

ANSI/TIA 5050-2018 \ 2N HAC ON \ EVS WB 24.4 kbps\WLAN 5.2GHz

Correction

rcv_vol_wb	106.9 dB[SPL]	2024.03.27	Measured	5.1 Receive Volume Control Performance 2N
------------	---------------	------------	----------	---

rcv_vol_wb-70

Calculated Value: 36.9 dB OK

Ok

Limits

	lower
Run 1	6.00 dB



ANSI/TIA 5050-2018 \ 2N HAC ON \ EVS WB 24.4 kbps\WLAN 5.3GHz

Correction

rcv_vol_wb	106.5 dB[SPL]	2024.03.27	Measured	5.1 Receive Volume Control Performance 2N
------------	---------------	------------	----------	---

rcv_vol_wb-70

Calculated Value: 36.5 dB OK

Ok

Limits

	lower
Run 1	6.00 dB

ANSI/TIA 5050-2018 \ 2N HAC ON \ EVS WB 24.4 kbps\WLAN 5.5GHz

Correction

rcv_vol_wb	105.8 dB[SPL]	2024.03.27	Measured	5.1 Receive Volume Control Performance 2N
------------	---------------	------------	----------	---

rcv_vol_wb-70

Calculated Value: 35.8 dB OK

Ok

Limits

	lower
Run 1	6.00 dB

ANSI/TIA 5050-2018 \ 2N HAC ON \ EVS WB 24.4 kbps\WLAN 5.8GHz

Correction

rcv_vol_wb	106.4 dB[SPL]	2024.03.27	Measured	5.1 Receive Volume Control Performance 2N
------------	---------------	------------	----------	---

rcv_vol_wb-70

Calculated Value: 36.4 dB OK

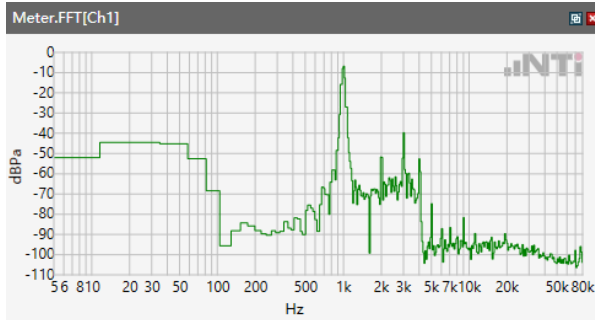
Ok

Limits

	lower
Run 1	6.00 dB

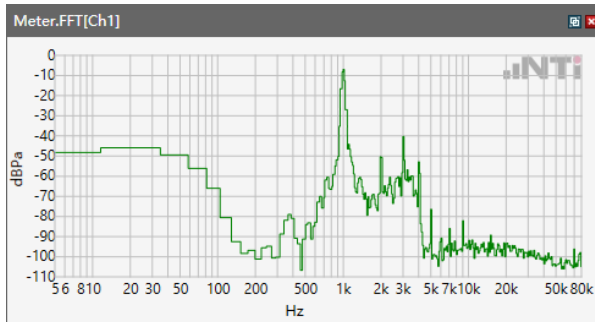
5.1 Receive Volume Control Performance 2N---EVS SWB

ANSI/TIA 5050-2018 \ 2N HAC ON \ EVS SWB 24.4 kbps\LTE Band 2



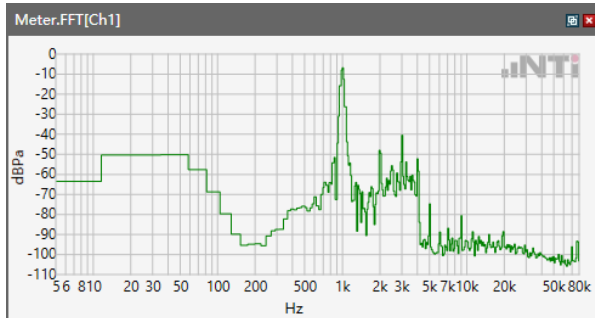
Speech Level RCV: 85.85 dB[SPL]

ANSI/TIA 5050-2018 \ 2N HAC ON \ EVS SWB 24.4 kbps\ LTE Band 4



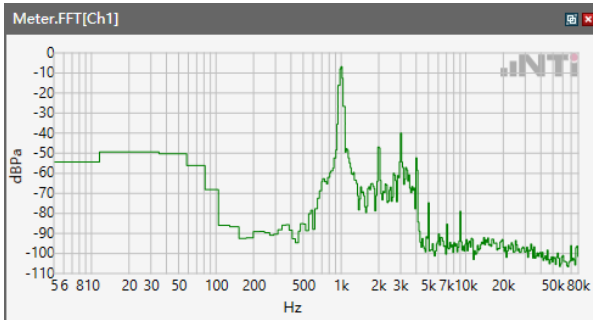
Speech Level RCV: 85.9 dB[SPL]

ANSI/TIA 5050-2018 \ 2N HAC ON \ EVS SWB 24.4 kbps\LTE Band 5



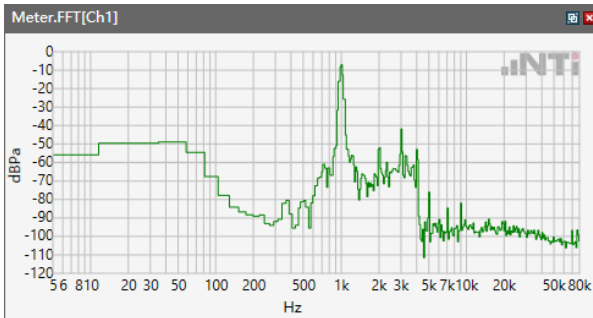
Speech Level RCV: 85.84 dB[SPL]

ANSI/TIA 5050-2018 \ 2N HAC ON \ EVS SWB 24.4 kbps\LTE Band 7



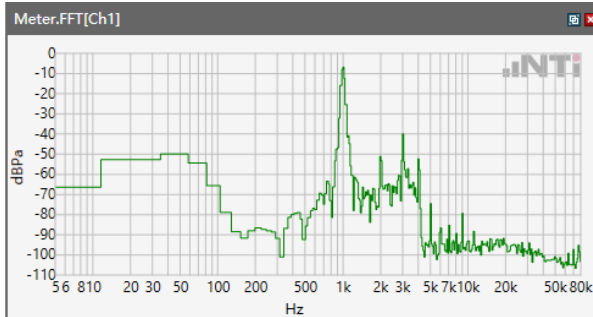
Speech Level RCV: 85.87 dB[SPL]

ANSI/TIA 5050-2018 \ 2N HAC ON \ EVS SWB 24.4 kbps\ LTE Band 12



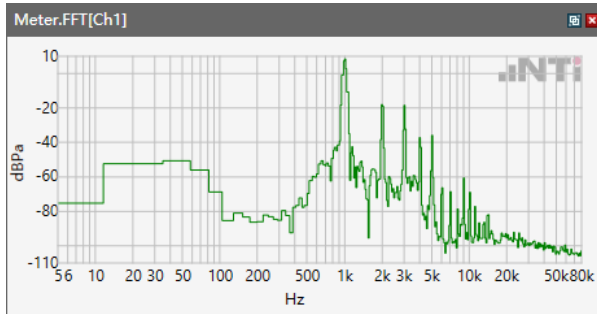
Speech Level RCV: 85.82 dB[SPL]

ANSI/TIA 5050-2018 \ 2N HAC ON \ EVS SWB 24.4 kbps\LTE Band 13



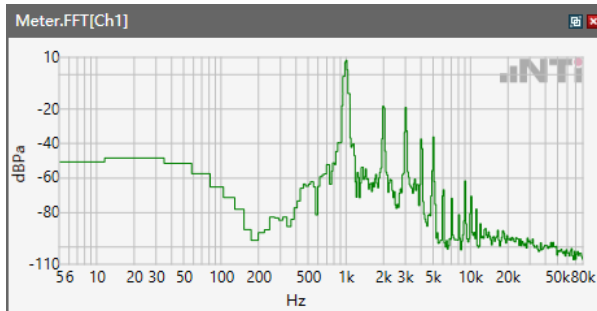
Speech Level RCV: 85.79 dB[SPL]

ANSI/TIA 5050-2018 \ 2N HAC ON \ EVS SWB 24.4 kbps\ LTE Band 17



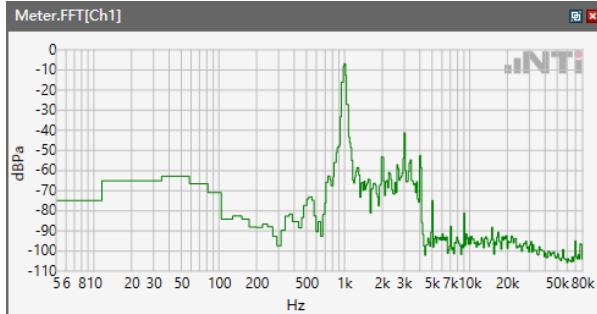
Speech Level RCV: 85.64 dB[SPL]

ANSI/TIA 5050-2018 \ 2N HAC ON \ EVS SWB 24.4 kbps\LTE Band 25



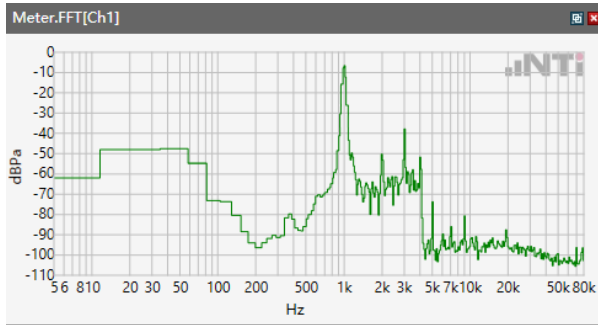
Speech Level RCV: 85.74 dB[SPL]

ANSI/TIA 5050-2018 \ 2N HAC ON \ EVS SWB 24.4 kbps\LTE Band 66



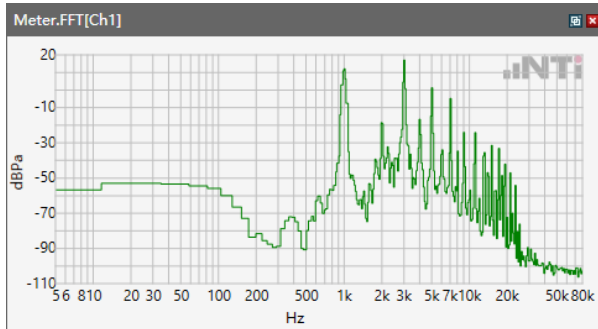
Speech Level RCV: 85.95 dB[SPL]

ANSI/TIA 5050-2018 \ 2N HAC ON \ EVS SWB 24.4 kbps\LTE Band 71



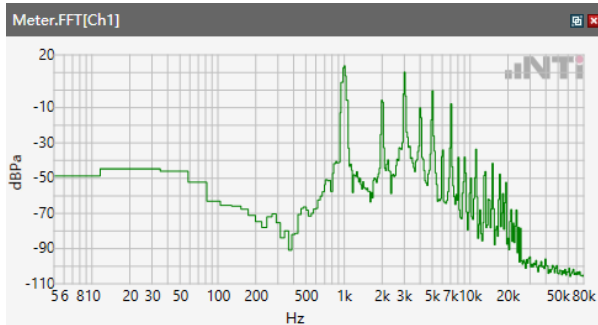
Speech Level RCV: 86.35 dB[SPL]

ANSI/TIA 5050-2018 \ 2N HAC ON \ EVS SWB 24.4 kbps\WLAN 2.4GHz



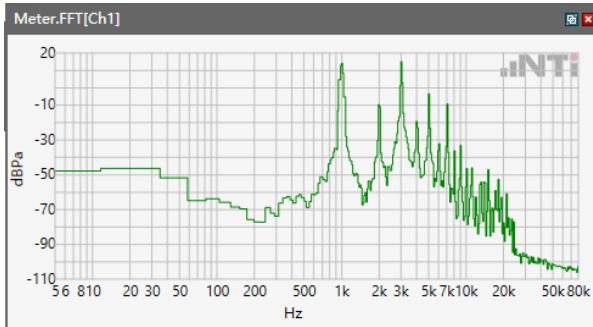
Speech Level RCV: 105.9 dB[SPL]

ANSI/TIA 5050-2018 \ 2N HAC ON \ EVS SWB 24.4 kbps\WLAN 5.2GHz



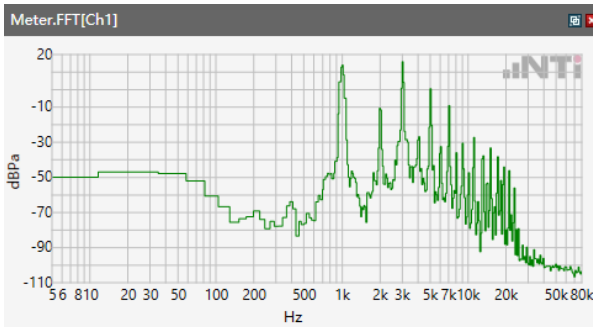
Speech Level RCV: 106.5 dB[SPL]

ANSI/TIA 5050-2018 \ 2N HAC ON \ EVS SWB 24.4 kbps\WLAN 5.3 GHz



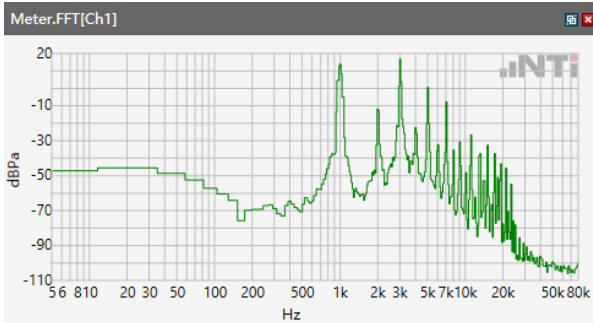
Speech Level RCV: 106.4 dB[SPL]

ANSI/TIA 5050-2018 \ 2N HAC ON \ EVS SWB 24.4 kbps\WLAN 5.5 GHz



Speech Level RCV: 105.5 dB[SPL]

ANSI/TIA 5050-2018 \ 2N HAC ON \ EVS SWB 24.4 kbps\WLAN 5.8 GHz



Speech Level RCV: 106 dB[SPL]

5.1.1 -1 Conversation Gain 2N

ANSI/TIA 5050-2018 \ 2N HAC ON \ EVS SWB 24.4 kbps\LTE Band 2

Correction

rcv_vol_wb	85.85 dB[SPL]	2024.03.20	Measured	5.1 Receive Volume Control Performance 2N
------------	---------------	------------	----------	---

rcv_vol_wb-70

Calculated Value: 15.85 dB OK

Ok

Limits

	lower
Run 1	6.00 dB

ANSI/TIA 5050-2018 \ 2N HAC ON \ EVS SWB 24.4 kbps\LTE Band 4

Correction

rcv_vol_wb	85.9 dB[SPL]	2024.03.20	Measured	5.1 Receive Volume Control Performance 2N
------------	--------------	------------	----------	---

rcv_vol_wb-70

Calculated Value: 15.9 dB OK

Ok

Limits

	lower
Run 1	6.00 dB

ANSI/TIA 5050-2018 \ 2N HAC ON \ EVS SWB 24.4 kbps\LTE Band 5

Correction

rcv_vol_wb	85.84 dB[SPL]	2024.03.20	Measured	5.1 Receive Volume Control Performance 2N
------------	---------------	------------	----------	---

rcv_vol_wb-70

Calculated Value: 15.84 dB OK

Ok

Limits

	lower
Run 1	6.00 dB

ANSI/TIA 5050-2018 \ 2N HAC ON \ EVS SWB 24.4 kbps\LTE Band 7

Correction

rcv_vol_wb	85.87 dB[SPL]	2024.03.20	Measured	5.1 Receive Volume Control Performance 2N
------------	---------------	------------	----------	---

rcv_vol_wb-70

Calculated Value: 15.87 dB OK

Ok

Limits

	lower
Run 1	6.00 dB

ANSI/TIA 5050-2018 \ 2N HAC ON \ EVS SWB 24.4 kbps\LTE Band 12

Correction

rcv_vol_wb	85.82 dB[SPL]	2024.03.20	Measured	5.1 Receive Volume Control Performance 2N
------------	---------------	------------	----------	---

rcv_vol_wb-70

Calculated Value: 15.82 dB OK

Ok**Limits**

	lower
Run 1	6.00 dB

ANSI/TIA 5050-2018 \ 2N HAC ON \ EVS SWB 24.4 kbps\LTE Band 13

Correction

rcv_vol_wb	85.79 dB[SPL]	2024.03.20	Measured	5.1 Receive Volume Control Performance 2N
------------	---------------	------------	----------	---

rcv_vol_wb-70

Calculated Value: 15.79 dB OK

Ok**Limits**

	lower
Run 1	6.00 dB



ANSI/TIA 5050-2018 \ 2N HAC ON \ EVS SWB 24.4 kbps\LTE Band 17

Correction

rcv_vol_wb	85.64 dB[SPL]	2024.04.03	Measured	5.1 Receive Volume Control Performance 2N
------------	---------------	------------	----------	---

rcv_vol_wb-70

Calculated Value: 15.64 dB OK

Ok

Limits

	lower
Run 1	6.00 dB

ANSI/TIA 5050-2018 \ 2N HAC ON \ EVS SWB 24.4 kbps\LTE Band 25

Correction

rcv_vol_wb	85.74 dB[SPL]	2024.04.03	Measured	5.1 Receive Volume Control Performance 2N
------------	---------------	------------	----------	---

rcv_vol_wb-70

Calculated Value: 15.74 dB OK

Ok

Limits

	lower
Run 1	6.00 dB

ANSI/TIA 5050-2018 \ 2N HAC ON \ EVS SWB 24.4 kbps\LTE Band 66

Correction

rcv_vol_wb	85.95 dB[SPL]	2024.03.20	Measured	5.1 Receive Volume Control Performance 2N
------------	---------------	------------	----------	---

rcv_vol_wb-70

Calculated Value: 15.95 dB OK

Ok**Limits**

	lower
Run 1	6.00 dB

ANSI/TIA 5050-2018 \ 2N HAC ON \ EVS SWB 24.4 kbps\LTE Band 71

Correction

rcv_vol_wb	86.35 dB[SPL]	2024.03.22	Measured	5.1 Receive Volume Control Performance 2N
------------	---------------	------------	----------	---

rcv_vol_wb-70

Calculated Value: 16.35 dB OK

Ok**Limits**

	lower
Run 1	6.00 dB

ANSI/TIA 5050-2018 \ 2N HAC ON \ EVS SWB 24.4 kbps\WLAN 2.4GHz

Correction

rcv_vol_wb	105.9 dB[SPL]	2024.03.26	Measured	5.1 Receive Volume Control Performance 2N
------------	---------------	------------	----------	---

rcv_vol_wb-70

Calculated Value: 35.9 dB OK

Ok**Limits**

	lower
Run 1	6.00 dB

ANSI/TIA 5050-2018 \ 2N HAC ON \ EVS SWB 24.4 kbps\WLAN 5.2GHz

Correction

rcv_vol_wb	106.5 dB[SPL]	2024.03.27	Measured	5.1 Receive Volume Control Performance 2N
------------	---------------	------------	----------	---

rcv_vol_wb-70

Calculated Value: 36.5 dB OK

Ok**Limits**

	lower
Run 1	6.00 dB



ANSI/TIA 5050-2018 \ 2N HAC ON \ EVS SWB 24.4 kbps\WLAN 5.3GHz

Correction

rcv_vol_wb	106.4 dB[SPL]	2024.03.27	Measured	5.1 Receive Volume Control Performance 2N
------------	---------------	------------	----------	---

rcv_vol_wb-70

Calculated Value: 36.4 dB OK

Ok

Limits

	lower
Run 1	6.00 dB

ANSI/TIA 5050-2018 \ 2N HAC ON \ EVS SWB 24.4 kbps\WLAN 5.5GHz

Correction

rcv_vol_wb	105.5 dB[SPL]	2024.03.27	Measured	5.1 Receive Volume Control Performance 2N
------------	---------------	------------	----------	---

rcv_vol_wb-70

Calculated Value: 35.5 dB OK

Ok

Limits

	lower
Run 1	6.00 dB



ANSI/TIA 5050-2018 \ 2N HAC ON \ EVS SWB 24.4 kbps\WLAN 5.8GHz

Correction

rcv_vol_wb	106 dB[SPL]	2024.03.27	Measured	5.1 Receive Volume Control Performance 2N
------------	-------------	------------	----------	---

rcv_vol_wb-70

Calculated Value: 36 dB OK

Ok

Limits

	lower
Run 1	6.00 dB