



REPORT No.: SZ23070206S02

Annex C Plots of System Performance Check

Laboratory Name: Morlab Grop
 Measurement Report for Device, FRONT, Validation band, CW, Channel 30000 (30000.0 MHz)

Device Under Test Properties

Model, Manufacturer	Dimensions [mm]	IMEI	DUT Type
Device,	100.0 x 100.0 x 100.0		Phone

Exposure Conditions

Phantom Section	Position, Test Distance [mm]	Band	Group, UID	Frequency [MHz], Channel Number	Conversion Factor
5G	FRONT, 5.5	Validation band	CW, 0--	30000.0, 30000	1.0

Hardware Setup

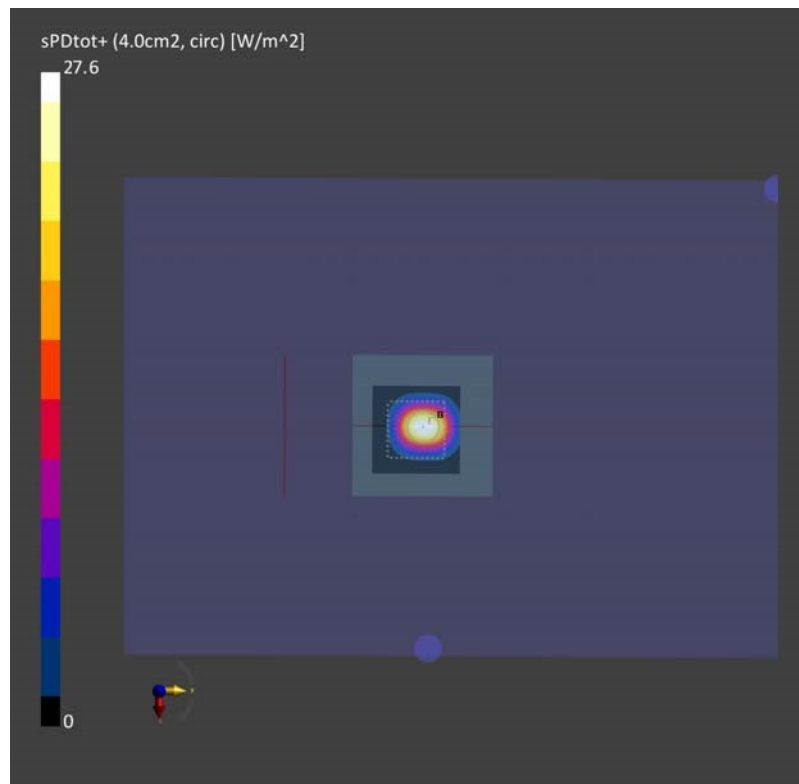
Phantom	Medium	Probe, Calibration Date	DAE, Calibration Date
mmWave - xxxx	Air -	EUmmWV4 - SN9602_F1-55GHz, 2023-11-02	DAE4 Sn480, 2023-09-19

Scans Setup

Scan Type	5G Scan
Grid Extents [mm]	60.0 x 60.0
Grid Steps [lambda]	0.25 x 0.25
Sensor Surface [mm]	5.55
MAIA	N/A

Measurement Results

Scan Type	5G Scan
Date	2024-03-03, 09:02
Avg. Area [cm ²]	4.00
psPDtot+ [W/m ²]	27.6
psPDmod+ [W/m ²]	27.8
E _{max} [V/m]	113



Laboratory Name: Morlab Grop
 Measurement Report for Device, FRONT, Validation band, CW, Channel 30000 (30000.0 MHz)

Device Under Test Properties

Model, Manufacturer	Dimensions [mm]	IMEI	DUT Type
Device,	100.0 x 100.0 x 100.0		Phone

Exposure Conditions

Phantom Section	Position, Test Distance [mm]	Band	Group, UID	Frequency [MHz], Channel Number	Conversion Factor
5G	FRONT, 5.5	Validation band	CW, 0--	30000.0, 30000	1.0

Hardware Setup

Phantom	Medium	Probe, Calibration Date	DAE, Calibration Date
mmWave - xxxx	Air -	EUmmWV4 - SN9602_F1-55GHz, 2023-11-02	DAE4 Sn480, 2023-09-19

Scans Setup

Scan Type	5G Scan
Grid Extents [mm]	60.0 x 60.0
Grid Steps [lambda]	0.25 x 0.25
Sensor Surface [mm]	5.55
MAIA	N/A

Measurement Results

Scan Type	5G Scan
Date	2024-03-04, 06:11
Avg. Area [cm ²]	4.00
psPDtot+ [W/m ²]	27.2
psPDmod+ [W/m ²]	27.3
E _{max} [V/m]	115

