



REPORT No.: SZ21100132S01

## Annex D Plots of Maximum PD Test Results

Laboratory Name: Morlab Grop  
 5G NR n260\_100MHz\_QPSK\_22RB 20offset\_Beam ID 161\_Left Side\_2mm\_Ch2254165\_QTM0

**Device Under Test Properties**

Model, Manufacturer	Dimensions [mm]	IMEI	DUT Type
Device,	258.0 x 172.0 x 12.0		Tablet

**Exposure Conditions**

Phantom Section	Position, Test Distance [mm]	Band	Group, UID	Frequency [MHz], Channel Number	Conversion Factor
5G	EDGE LEFT, 2.00	Band n260	5G NR FR2 TDD, 10869-AAD	38499.9, 2254165	1.0

**Hardware Setup**

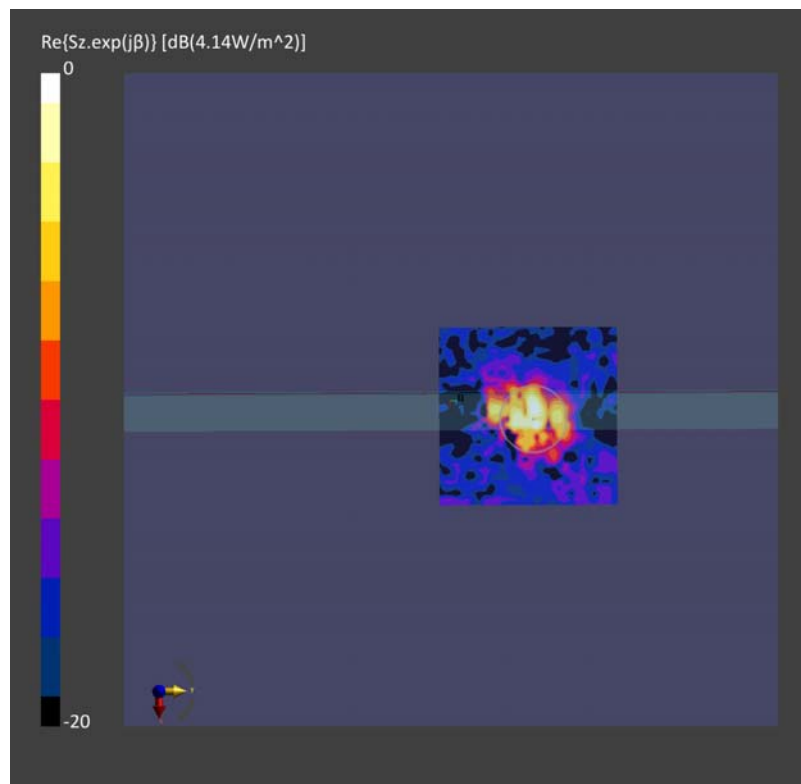
Phantom	Medium	Probe, Calibration Date	DAE, Calibration Date
mmWave - xxxx	Air -	EUmmWV4 - SN9602_F1-55GHz, 2021-11-02	DAE4 Sn1353, 2021-10-19

**Scans Setup**

Scan Type	5G Scan
Grid Extents [mm]	60.0 x 60.0
Grid Steps [lambda]	0.25 x 0.25
Sensor Surface [mm]	2.0
MAIA	N/A

**Measurement Results**

Scan Type	5G Scan
Date	2022-01-29, 13:12
Avg. Area [cm <sup>2</sup> ]	4.00
psPDtot+ [W/m <sup>2</sup> ]	1.36
psPDmod+ [W/m <sup>2</sup> ]	1.52
E <sub>max</sub> [V/m]	43.6



Laboratory Name: Morlab Grop  
 5G NR n260\_100MHz\_QPSK\_22RB 20offset\_Beam ID 29 157\_Right Side\_2mm\_Ch2254165\_QTM1\_TAV OFF

**Device Under Test Properties**

Model, Manufacturer	Dimensions [mm]	IMEI	DUT Type
Device,	258.0 x 172.0 x 12.0		Tablet

**Exposure Conditions**

Phantom Section	Position, Test Distance [mm]	Band	Group, UID	Frequency [MHz], Channel Number	Conversion Factor
5G	EDGE LEFT, 2.00	Band n260	5G NR FR2 TDD, 10869-AAD	38499.9, 2254165	1.0

**Hardware Setup**

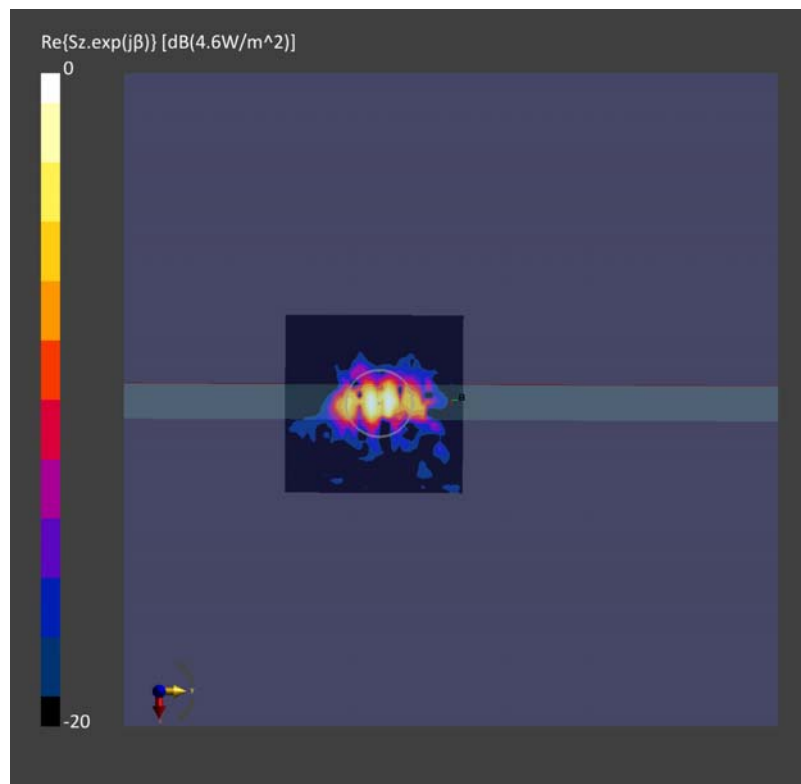
Phantom	Medium	Probe, Calibration Date	DAE, Calibration Date
mmWave - xxxx	Air -	EUmmWV4 - SN9602_F1-55GHz, 2021-11-02	DAE4 Sn1353, 2021-10-19

**Scans Setup**

Scan Type	5G Scan
Grid Extents [mm]	60.0 x 60.0
Grid Steps [lambda]	0.25 x 0.25
Sensor Surface [mm]	2.0
MAIA	N/A

**Measurement Results**

Scan Type	5G Scan
Date	2022-01-29, 18:33
Avg. Area [cm <sup>2</sup> ]	4.00
psPDtot+ [W/m <sup>2</sup> ]	1.04
psPDmod+ [W/m <sup>2</sup> ]	1.16
E <sub>max</sub> [V/m]	45.7



Laboratory Name: Morlab Grop  
 5G NR n261\_100MHz\_QPSK\_22RB 20offset\_Beam ID 24 152\_Left Side\_2mm\_Ch2077915\_QTM0\_TAV ON

**Device Under Test Properties**

Model, Manufacturer	Dimensions [mm]	IMEI	DUT Type
Device,	258.0 x 172.0 x 12.0		Tablet

**Exposure Conditions**

Phantom Section	Position, Test Distance [mm]	Band	Group, UID	Frequency [MHz], Channel Number	Conversion Factor
5G	EDGE LEFT, 2.00	Band n261	5G NR FR2 TDD, 10869-AAD	27924.9, 2077915	1.0

**Hardware Setup**

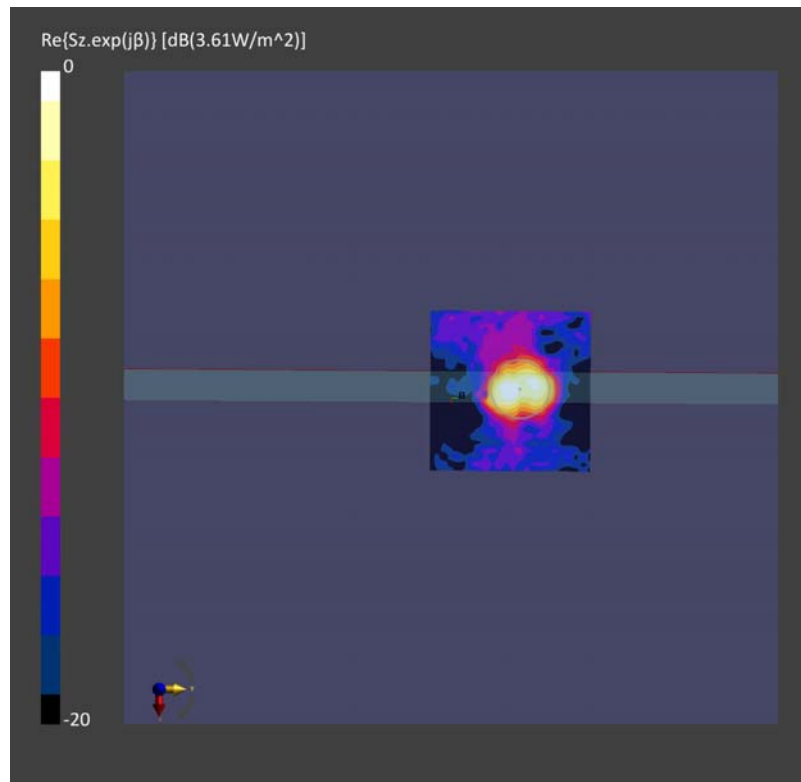
Phantom	Medium	Probe, Calibration Date	DAE, Calibration Date
mmWave - xxxx	Air -	EUmmWV4 - SN9602_F1-55GHz, 2021-11-02	DAE4 Sn1353, 2020-10-19

**Scans Setup**

Scan Type	5G Scan
Grid Extents [mm]	60.0 x 60.0
Grid Steps [lambda]	0.25 x 0.25
Sensor Surface [mm]	2.0
MAIA	N/A

**Measurement Results**

Scan Type	5G Scan
Date	2022-01-28, 21:01
Avg. Area [cm <sup>2</sup> ]	4.00
psPDtot+ [W/m <sup>2</sup> ]	1.67
psPDmod+ [W/m <sup>2</sup> ]	1.74
E <sub>max</sub> [V/m]	38.2



Laboratory Name: Morlab Grop  
 5G NR n261\_100MHz\_QPSK\_22RB 20offset\_Beam ID 28\_Right Side\_2mm\_Ch2077915\_QTM1

**Device Under Test Properties**

Model, Manufacturer	Dimensions [mm]	IMEI	DUT Type
Device,	258.0 x 172.0 x 12.0		Tablet

**Exposure Conditions**

Phantom Section	Position, Test Distance [mm]	Band	Group, UID	Frequency [MHz], Channel Number	Conversion Factor
5G	EDGE LEFT, 2.00	Band n261	5G NR FR2 TDD, 10869-AAD	27924.9, 2077915	1.0

**Hardware Setup**

Phantom	Medium	Probe, Calibration Date	DAE, Calibration Date
mmWave - xxxx	Air -	EUmmWV4 - SN9602_F1-55GHz, 2021-11-02	DAE4 Sn1353, 2021-10-19

**Scans Setup**

Scan Type	5G Scan
Grid Extents [mm]	60.0 x 60.0
Grid Steps [lambda]	0.25 x 0.25
Sensor Surface [mm]	2.0
MAIA	N/A

**Measurement Results**

Scan Type	5G Scan
Date	2022-01-28, 15:27
Avg. Area [cm <sup>2</sup> ]	4.00
psPDtot+ [W/m <sup>2</sup> ]	2.41
psPDmod+ [W/m <sup>2</sup> ]	2.51
E <sub>max</sub> [V/m]	49.2

