

FCC TEST REPORT

for

PC Smart S.A.

Mobile Phone

Model Number: TouchSmart Phone

FCC ID: 2ABFV-TOUCH

Prepared for : PC Smart S.A.
Address : Carrera 116 no. 15 – 25 Bogota - Colombia

Prepared by : Keyway Testing Technology Co., Ltd.
Address : Baishun Industrial Zone, Zhangmutou Town,
Dongguan, Guangdong, China

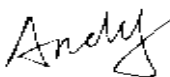
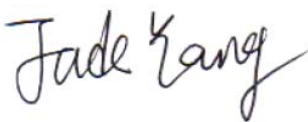

Tel: 86-769-8718 2258
Fax: 86-769-8718 1058

Report No. : 13KWE11102612R
Date of Test : Nov. 20~Dec.09, 2013
Date of Report : Dec. 10, 2013

TABLE OF CONTENTS

	Page
Test Report Declaration	Page
1. TEST SUMMARY	4
2. GENERAL PRODUCT INFORMATION	5
2.1. Product Function	5
2.2. Description of Device (EUT).....	5
2.3. Difference between Model Numbers	6
2.4. Independent Operation Modes	6
2.5. Test Supporting System	6
3. TEST SITES	7
3.1. Test Facilities.....	7
3.2. List of Test and Measurement Instruments	8
4. TEST SET-UP AND OPERATION MODES	9
4.1. Principle of Configuration Selection	9
4.2. Block Diagram of Test Set-up	9
4.3. Test Operation Mode and Test Software	9
4.4. Special Accessories and Auxiliary Equipment	9
4.5. Countermeasures to Achieve EMC Compliance	9
5. EMISSION TEST RESULTS.....	10
5.1. Conducted Emission at the Mains Terminals Test	10
5.2. Radiated Emission Test	12
6. PHOTOGRAPHS OF TEST SET-UP	14
6.1. Set-up for Conducted Emission Test	14
6.2. Set-up for Radiated Emission Test	15
7. PHOTOGRAPHS OF THE EUT	16

Keyway Testing Technology Co., Ltd.

Applicant:	PC Smart S.A.		
Address:	Carrera 116 no. 15 – 25 Bogota - Colombia		
Manufacturer:	PC Smart S.A.		
Address:	Planta de Produccion, Carrera 106 No. 15A – 25 Mzn 4, Int 11 Bodega 4, Fontibon-Bogota, Colombia		
Factor:	SHENZHEN PERFECT TECHNOLOGY CO.,LTD		
Address:	The 2nd Floor, Xinlong Science And Technology Park, Industry Number One Road, Dawang Shan Community, Shajing Street, Bao'an, Shenzhen, China		
E.U.T:	Mobile Phone		
Model Number:	TouchSmart Phone		
Trade Name:	PCSMART	Serial No.:	-----
Date of Receipt:	Nov. 20, 2013	Date of Test:	Nov. 20~Dec.09, 2013
Test Specification:	FCC Part 15, Subpart B: Oct. 1, 2013 ANSI C63.4:2003		
Test Result:	The equipment under test was found to be compliance with the requirements of the standards applied.		
	Issue Date: Dec. 10, 2013		
Tested by:	Reviewed by:	Approved by:	
			
Andy Gao / Engineer	Jade Yang / Supervisor	Chris Du / Manager	
Other Aspects:	None.		
<i>Abbreviations: OK/P=passed fail/F=failed n.a/N=not applicable E.U.T=equipment under tested</i>			
<i>This test report is based on a single evaluation of one sample of above mentioned products. It is not permitted to be duplicated in extracts without written approval of Keyway Testing Technology Co., Ltd.</i>			

1. TEST SUMMARY

Test Items	Test Requirement	Uncertainty	Result
Conducted Emissions	15.107 ANSI C63.4	$\pm 2.6\text{dB}$	PASS
Radiated Emissions	15.109 ANSI C63.4	$\pm 3.6\text{dB}$	PASS

2. GENERAL PRODUCT INFORMATION

2.1. Product Function

Refer to Technical Construction Form and User Manual.

2.2. Description of Device (EUT)

Product Name:	Mobile Phone
Model No.:	TouchSmart Phone
Operation Frequency:	Bluetooth:2402~2480MHz WIFI:2412MHz~2462MHz (802.11b/802.11g/802.11n(H20)) 2422MHz~2452MHz (802.11n(H40)) GSM 850MHz: Tx: 824.20 - 848.80MHz (at intervals of 200kHz); Rx: 869.20 - 893.80MHz (at intervals of 200kHz) GSM 1900MHz: Tx: 1850.20 - 1909.80MHz (at intervals of 200kHz); Rx: 1930.20 - 1989.80MHz (at intervals of 200kHz) WCDMA Band II: TX: 1852.4MHz - 1907.6MHz, RX: 1932.4MHz - 1987.6MHz
Channel numbers:	Bluetooth:79 Channels WIFI:11Channel for 802.11b/g/n(HT20), 7 Channel for 802.11n(HT40)
Channel separation:	Bluetooth:1M WIFI:5M
Modulation technology:	Bluetooth: FHSS(GFSK 1Mbps),Pi/4DQPSK(EDR 2Mbps), 8-DQPSK(EDR 3Mbps) WIFI DBPSK/ DQPSK/CCK/BPSK/ QPSK/ 16QAM/ 64QAM GSM/GPRS Mode with GMSK Modulation WCDMA Mode with BPSK Modulation HSDPA Mode with QPSK, 16QAM Modulation HSUPA Mode with QPSK, 16QAM Modulation
Antenna Type:	PIFA Antenna
Antenna gain:	-1dBi (BT &WIFI) 0dBi (GSM&WCDMA)
Power supply:	DC 5V from adapter
Multislot Class:	12
EGPRS Class:	12
Adapter	Model : JK060501000V Input: AC 100-240V, 50/60Hz, 0.15A Output: DC 5V 1000mA

2.3. Difference between Model Numbers

None.

2.4. Independent Operation Modes

Test mode:	
Playing mode	Keep the EUT in Playing mode
Video Record mode	Keep the EUT in Video Recording mode
PC mode	Keep the EUT in exchanging data mode.
FM mode	Keep the EUT in FM receive mode
GPS mode	Keep the EUT in GPS receive mode
Pre-scan all modes, and found the PC mode which is the worst mode, so only the data of worst mode was show on the test report.	

2.5. Test Supporting System

2.5.1. Earphone Cable

Manufacturer: SAMSUNG
 M/N: KW Cable 12#
 Data Cable: Unshielded, Undetachable, 1.0m

2.5.2. TF card

Manufacturer: HC
 M/N: 11089060470CV

2.5.3. PC

Manufacturer: Lenovo
 M/N: Lenovo G475
 FCC Approve: FCC DOC

2.5.4. Modem

Manufacturer: Keyway
 Model Number: MS14
 FCC Approve: FCC DOC

2.5.5. Mouse

Manufacturer: SHENGLIAN
 Model Number: MS111-L
 FCC Approve: FCC DOC

2.5.6. Keyboard

Manufacturer: DELL
 Model Number: KB212-B
 FCC Approve: FCC DOC

3. TEST SITES

3.1. Test Facilities

Lab Qualifications : 944 Shielded Room built by ETS-Lindgren, USA
Date of completion: March 28, 2011

966 Chamber built by ETS-Lindgren, USA
Date of completion: March 28, 2011

Certificated by TUV Rheinland, Germany.
Registration No.: UA 50207153
Date of registration: July 13, 2011

Certificated by UL, USA
Registration No.: 100567237
Date of registration: September 5, 2012

Certificated by Intertek
Registration No.: 2011-RTL-L1-31
Date of registration: October 11, 2011

Certificated by Industry Canada
Registration No.: 9868A
Date of registration: December 8, 2011

Certificated by FCC, USA
Registration No.: 370994
Date of registration: February 21, 2012

Certificated by CNAS China
Registration No.: CNAS L5783
Date of registration: August 8, 2012

Name of Firm : Keyway Testing Technology Co., Ltd.

Site Location : Baishun Industrial Zone, Zhangmutou Town,
Dongguan, Guangdong, China

3.2. List of Test and Measurement Instruments

3.2.1. For conducted emission at the mains terminals test

Equipment	Manufacturer	Model No.	Serial No.	Last Cal.	Next Cal.
EMI Test Receiver	Rohde&Schwarz	ESCI	101156	May 9,13	May 9,14
Artificial Mains Network	Rohde&Schwarz	ENV216	101315	May 9,13	May 9,14
Artificial Mains Network (AUX)	Rohde&Schwarz	ENV216	101314	May 9,13	May 9,14
RF Cable	FUJIKURA	3D-2W	944 Cable	May 9,13	May 9,14

3.2.2. For radiated emission test

Equipment	Manufacturer	Model No.	Serial No.	Last Cal.	Next Cal.
EMI Test Receiver	Rohde&Schwarz	ESCI	101156	May 9,13	May 9,14
System Simulator	Agilent	E5515C	GB43130245	May 9,13	May 9,14
Power Splitter	Weinschel	1506A	NW425	May 9,13	May 9,14
Bilog Antenna	ETS-LINDGREEN	3142D	135452	May 20,13	May 20,14
Spectrum Analyzer	Agilent	E4411B	MY4511304	May 9,13	May 9,14
3m Semi-anechoic Chamber	ETS-LINDGREEN	966	KW01	May 9,13	May 9,14
Signal Amplifier	SONOMA	310	187016	May 9,13	May 9,14
Signal Amplifier	Agilent	8449B	3008A00251	May 9,13	May 9,14
RF Cable	IMRO	IMRO-400	966 Cable 1#	N/A	N/A
MULTI-DEVICE Controller	ETS-LINDGREEN	2090	126913	N/A	N/A
Horn Antenna	DAZE	ZN30701	11003	May. 11,13	May. 11,14
Horn Antenna	SCHWARZBECK	BBHA9170	9170-068	May. 11,13	May. 11,14
Spectrum Analyzer	Agilent	8593E	3911A04271	May. 9,13	May. 9,14
Spectrum Analyzer	Agilent	E4408B	MY44211125	May. 9,13	May. 9,14
Signal Amplifier	DAZE	ZN3380C	11001	May. 9,13	May. 9,14
High Pass filter	Micro	HPM50111	324216	May. 9,13	May. 9,14
Filter	COM-MW	ZBSF-C836.5-25-X	KW032	May. 9,13	May. 9,14
Filter	COM-MW	ZBSF-C1747.5-75-X2	KW035	May. 9,13	May. 9,14
Filter	COM-MW	ZBSF-C1880-60-X2	KW037	May. 9,13	May. 9,14
Power Meter	R&S	NRVS	101824	May. 9,13	May. 9,14
Peak and Avg Power Sensor	Rohde&Schwarz	URV5-Z2	100655	May. 9,13	May. 9,14
DC Power Supply	LongWei	PS-305D	010964729	May 9,13	May 9,14
Constant temperature and humidity box	GF	GTH-800-40-1P	MAA9906-005	May 9,13	May 9,14

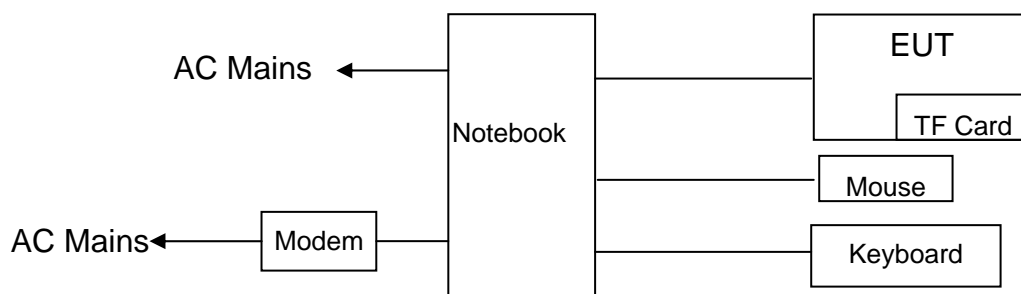
4. TEST SET-UP AND OPERATION MODES

4.1. Principle of Configuration Selection

Emission: The equipment under test (EUT) was configured to measure its highest possible radiation level. The test modes were adapted accordingly in reference to the Operating Instructions.

4.2. Block Diagram of Test Set-up

System Diagram of Connections between EUT and Simulators



(EUT: TouchSmart Phone)

4.3. Test Operation Mode and Test Software

Refer to Test Setup in clause 4.

4.4. Special Accessories and Auxiliary Equipment

None.

4.5. Countermeasures to Achieve EMC Compliance

None.

5. EMISSION TEST RESULTS

5.1. Conducted Emission at the Mains Terminals Test

Result	: Pass
Test Procedure	: ANSI C63.4:2003
Frequency Range	: 0.15 to 30 MHz
Test Site	: 944 Shielded Room
Limits	: FCC Part 15, Subpart B: Oct. 1, 2013

Test Setup

M/N	: TouchSmart Phone
Input Voltage	: DC 5V from PC input AC 120V/60Hz
Operation Mode	: Data transmitting

The EUT was put on a wooden table which was 0.8 m high above the ground and connected to the AC mains through the Artificial Mains Network (AMN). Where the mains cable supplied by the manufacture was longer than 1 m, the excess was folded back and forth parallel to the cable at the centre so as to form a bundle no longer than 0.4 m.

The EUT was kept 0.4 m from any other earthed conducting surface. Both sides of AC line were checked to find out the maximum conducted emission levels according to the test procedure during the conducted emission test.

The frequency range from 150 kHz to 30 MHz was investigated.

The bandwidth of the test receiver was set at 9 kHz.

The test data of the worst case condition(s) was reported on the following page.

Test Data**Line**

	Freq	Level	Limit	Over	Remark
	MHz	dBuV	dBuV	dB	
1	0.171	38.02	54.90	-16.88	Average
2	0.171	50.02	64.90	-14.88	QP
3	0.285	34.26	50.68	-16.42	Average
4	0.285	41.02	60.68	-19.66	QP
5	0.573	33.12	46.00	-12.88	Average
6	0.573	35.60	56.00	-20.40	QP
7	1.716	23.72	46.00	-22.28	Average
8	1.716	28.30	56.00	-27.70	QP
9	5.305	18.81	50.00	-31.19	Average
10	5.305	32.80	60.00	-27.20	QP
11	10.733	15.11	50.00	-34.89	Average
12	10.733	28.90	60.00	-31.10	QP

Neutral

	Freq	Level	Limit	Over	Remark
	MHz	dBuV	dBuV	dB	
1	0.171	41.51	54.90	-13.39	Average
2	0.171	50.01	64.90	-14.89	QP
3	0.341	37.83	49.18	-11.35	Average
4	0.341	40.20	59.18	-18.98	QP
5	0.627	35.77	46.00	-10.23	Average
6	0.627	38.60	56.00	-17.40	QP
7	1.495	31.71	46.00	-14.29	Average
8	1.495	35.60	56.00	-20.40	QP
9	3.547	27.72	46.00	-18.28	Average
10	3.547	34.30	56.00	-21.70	QP
11	12.582	15.86	50.00	-34.14	Average
12	12.582	30.02	60.00	-29.98	QP

5.2. Radiated Emission Test

Result	: Pass
Test Procedure	: ANSI C63.4:2003
Frequency Range	: 30 to 1000 MHz
Test Site	: 966 Chamber
Limits	: FCC Part 15, Subpart B: Oct. 1, 2013

Test Setup

M/N	: TouchSmart Phone
Input Voltage	: DC 5V from PC input AC 120V/60Hz
Operation Mode	: Data transmitting

The EUT was placed on a turn table which was 0.8 m above the ground. The turn table can rotate 360 degrees to determine the position of the maximum emission level. The EUT was set 3 m away from the receiving antenna which was mounted on an antenna tower. The measuring antenna moved up and down to find out the maximum emission level. It moved from 1 m to 4 m for both horizontal and vertical polarizations.

The EUT was tested in the Chamber Site. It was pre-scanned with a Peak detector from the spectrum, and all the final readings from the test receiver were measured with the Quasi-Peak detector.

The bandwidth of the EMI test receiver is set at 120kHz for frequency range from 30MHz to 1000 MHz.

The bandwidth of the Spectrum's VBW is set at 3MHz and RBW is set at 1MHz for peak emissions measurement above 1GHz.

Notes:

1. Emission Level = Antenna Factor + Cable Loss + Meter Reading-Preamp Factor.
2. Measurement Uncertainty: ± 3.6 dB at a level of confidence of 95%.
3. For above 1GHz test, the peak level below the average limit, no data will be presented.

Test Data

Data transmitting	Horizontal polarizations								
	Preamp	Read	CableAntenna		Limit	Over	Remark		
	Freq	Factor	Level	Loss	Factor	Level		Line	Limit
MHz	dB	dBuV	dB	dB/m	dBuV/m	dBuV/m	dB		
1	86.12	31.35	47.76	0.94	8.67	26.02	40.00	-13.98	QP
2	248.15	30.96	41.35	1.70	12.85	24.94	46.00	-21.06	QP
3	522.19	30.68	38.96	2.94	19.14	30.36	46.00	-15.64	QP
4	611.94	30.62	35.95	3.38	20.93	29.64	46.00	-16.36	QP
5	733.31	30.66	35.97	4.04	22.67	32.02	46.00	-13.98	QP
6	902.06	30.05	36.81	4.84	24.06	35.66	46.00	-10.34	QP

Data transmitting	Vertical polarizations								
	Preamp	Read	CableAntenna		Limit	Over	Remark		
	Freq	Factor	Level	Loss	Factor	Level		Line	Limit
MHz	dB	dBuV	dB	dB/m	dBuV/m	dBuV/m	dB		
1 !	34.67	31.38	50.80	0.56	16.04	36.02	40.00	-3.98	QP
2	49.36	31.38	51.82	0.75	9.06	30.25	40.00	-9.75	QP
3	76.65	31.33	50.97	0.85	7.83	28.32	40.00	-11.68	QP
4	203.61	31.09	42.04	1.46	11.17	23.58	43.50	-19.92	QP
5	257.58	30.96	36.97	1.70	12.93	20.64	46.00	-25.36	QP
6	484.69	30.59	32.51	2.77	18.46	23.15	46.00	-22.85	QP

6. PHOTOGRAPHS OF TEST SET-UP

6.1. Set-up for Conducted Emission Test

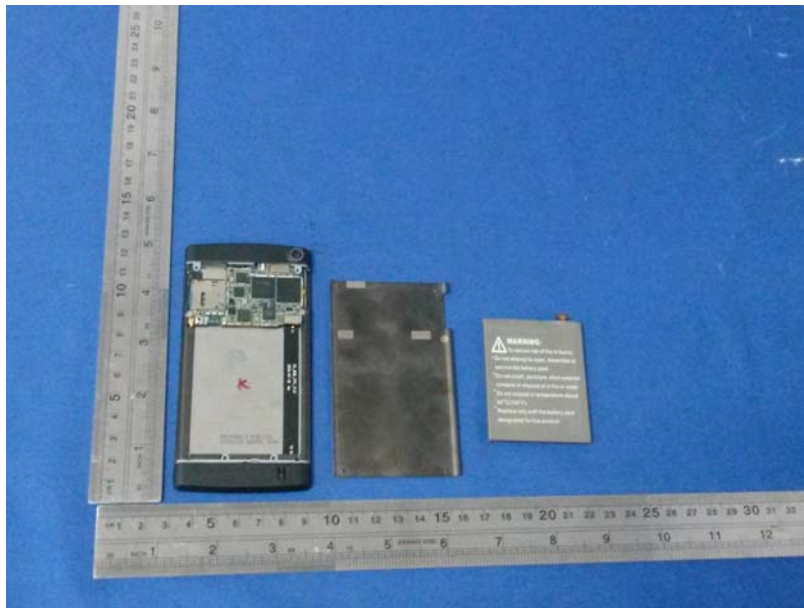


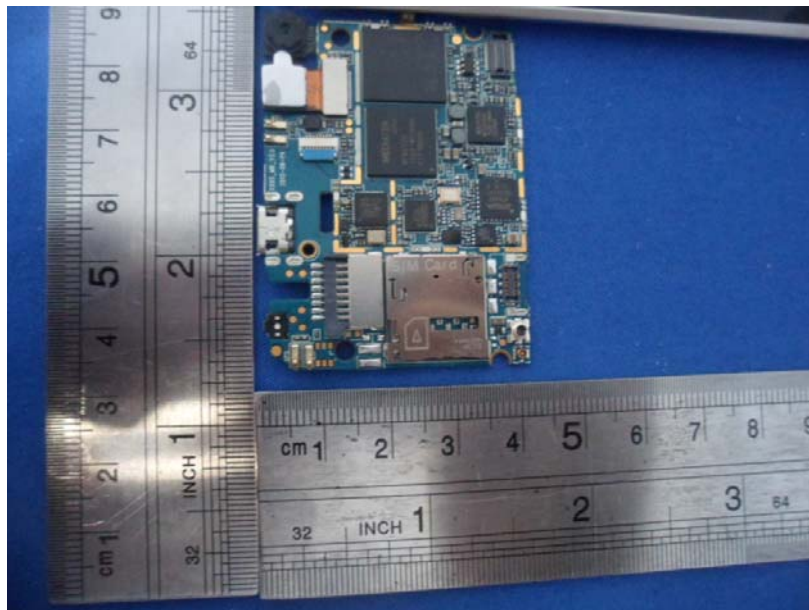
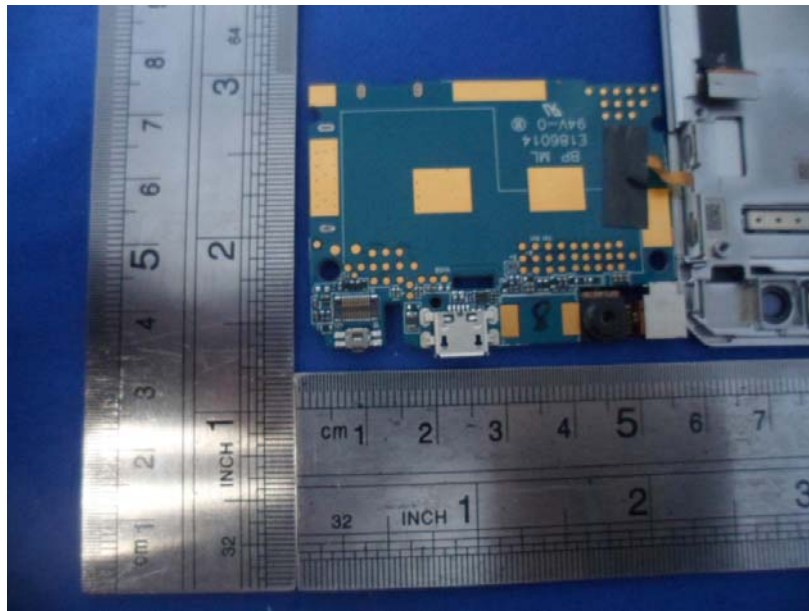
6.2. Set-up for Radiated Emission Test

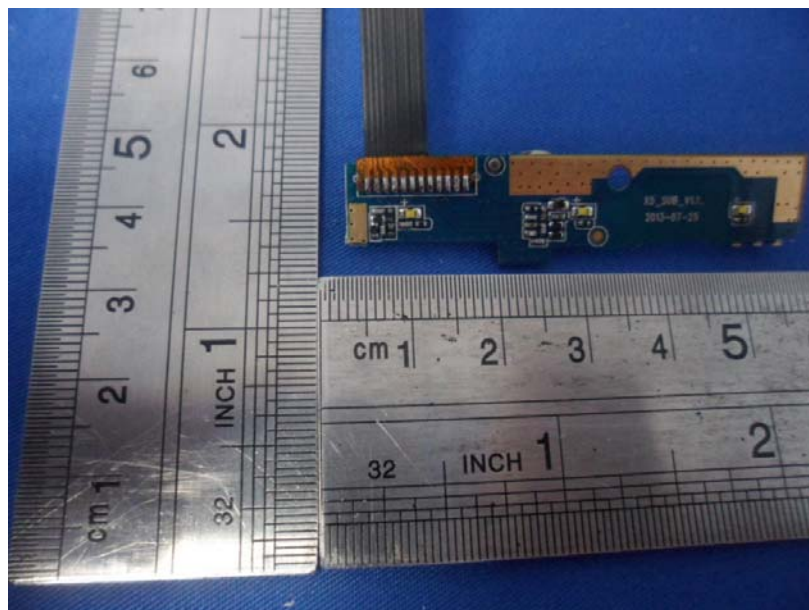
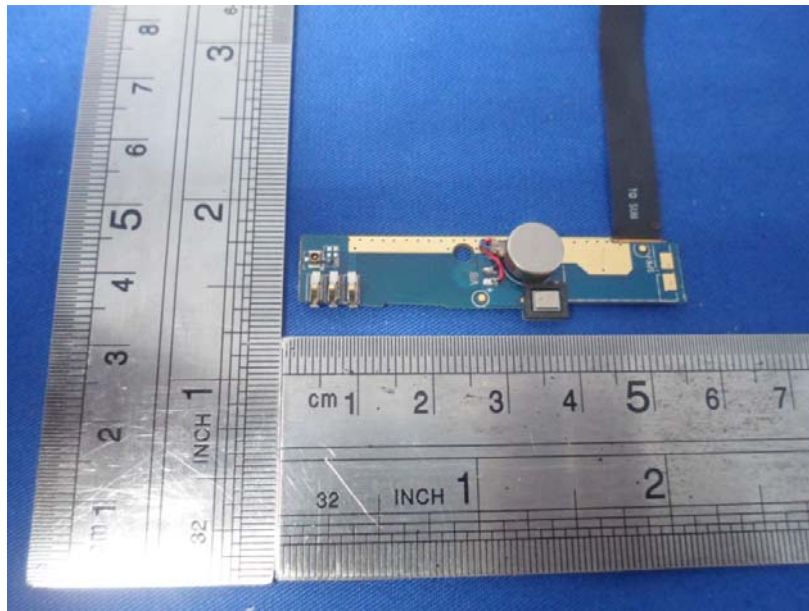


7. PHOTOGRAPHS OF THE EUT











-----end-----