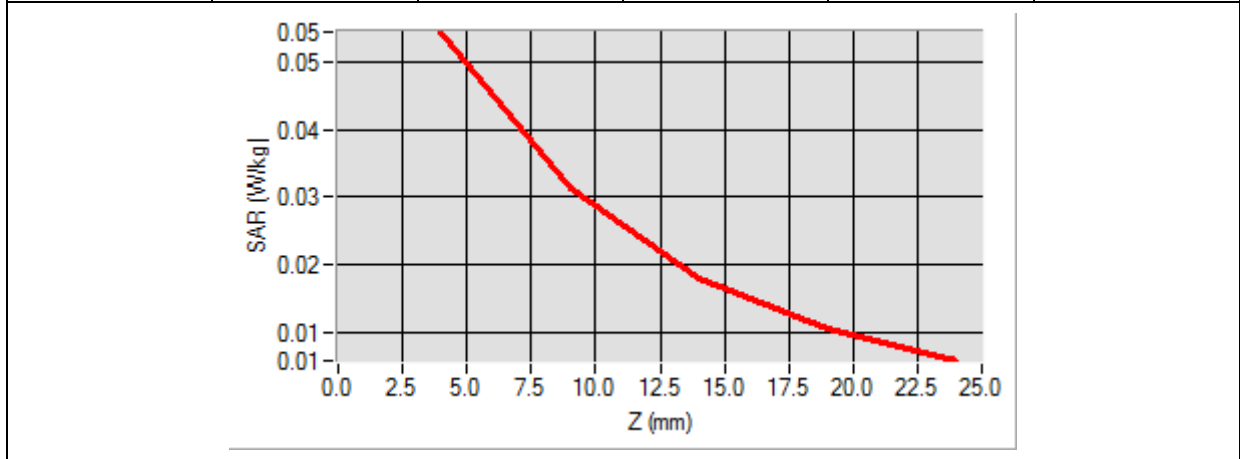


Maximum location: X=-29.00, Y=-7.00

SAR 10g (W/Kg)	0.028229
SAR 1g (W/Kg)	0.050865

Z (mm)	0.00	4.00	9.00	14.00	19.00
SAR (W/Kg)	0.0000	0.0545	0.0313	0.0179	0.0104



<p>3D screen shot</p>	<p>Hot spot position</p>

MEASUREMENT 24

Type: Phone measurement (Complete)

Date of measurement: 06/03/2014

Measurement duration: 12 minutes 3 seconds

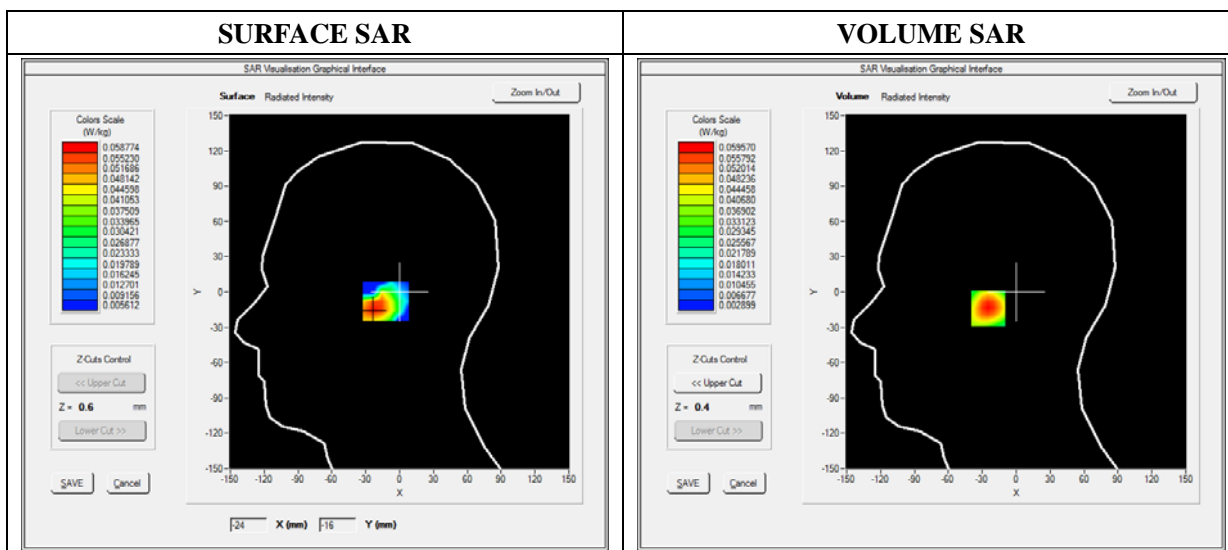
E-field Probe: SSE5 - SN 09/13 EP168; ConvF: 6.25; Calibrated: 03/21/2014

A. Experimental conditions

Area Scan	sam_direct_droit2_surf8mm.txt
Phantom	Right head
Device Position	Tilt
Band	WCDMA850_RMC
Channels	High
Signal	Duty Cycle: 1.00 (Crest factor: 1.0)

B. SAR Measurement Results

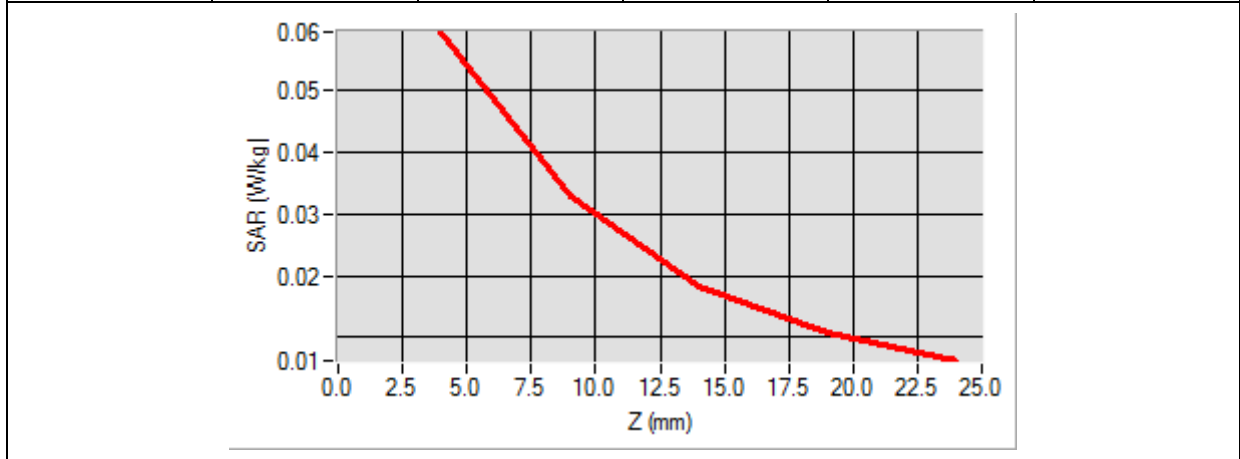
Frequency (MHz)	846.600000
Relative Permittivity (real part)	40.0200000
Conductivity (S/m)	0.910000
Power Variation (%)	1.810000
Ambient Temperature	21.1
Liquid Temperature	21.3



Maximum location: X=-22.00, Y=-14.00

SAR 10g (W/Kg)	0.030857
SAR 1g (W/Kg)	0.055619

Z (mm)	0.00	4.00	9.00	14.00	19.00
SAR (W/Kg)	0.0000	0.0596	0.0329	0.0184	0.0107



3D screen shot	Hot spot position

MEASUREMENT 25

Type: Phone measurement (Complete)

Date of measurement: 06/03/2014

Measurement duration: 12 minutes 3 seconds

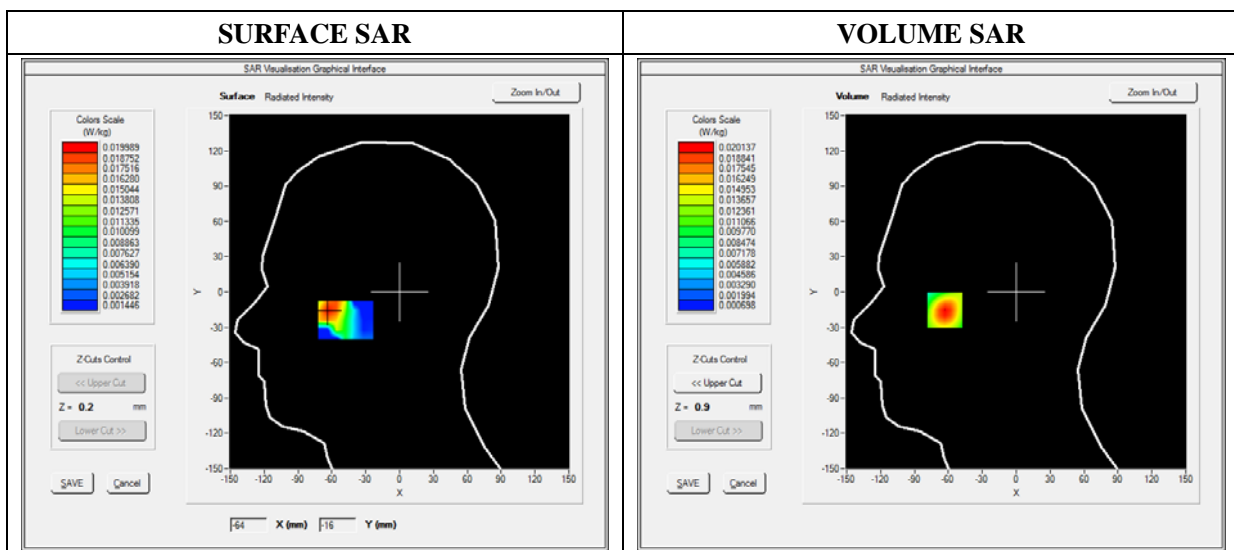
E-field Probe: SSE5 - SN 09/13 EP168; ConvF: 6.25; Calibrated: 03/21/2014

A. Experimental conditions

Area Scan	sam_direct_droit2_surf8mm.txt
Phantom	Left head
Device Position	Cheek
Band	WCDMA850_RMC
Channels	High
Signal	Duty Cycle: 1.00 (Crest factor: 1.0)

B. SAR Measurement Results

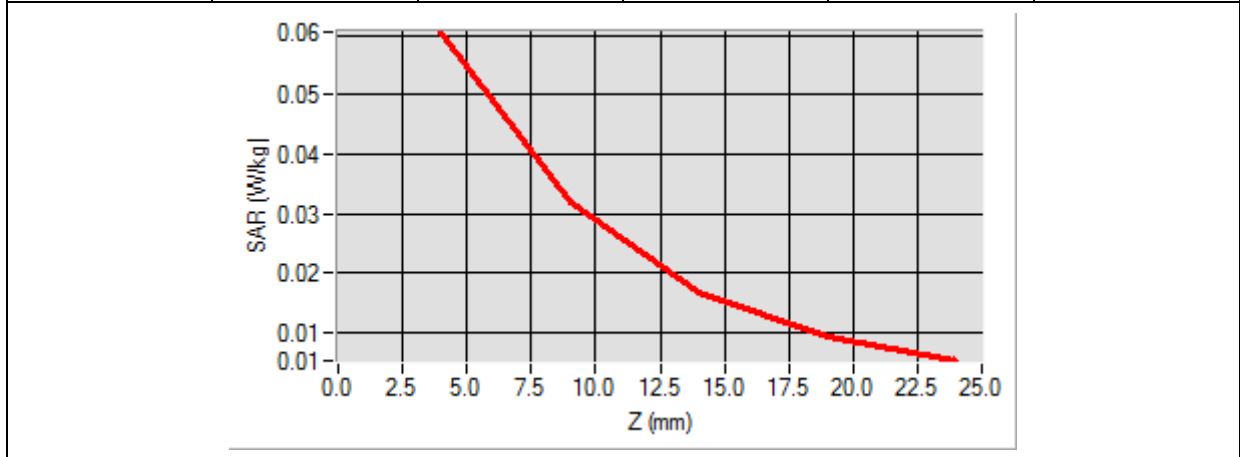
Frequency (MHz)	846.600000
Relative Permittivity (real part)	40.0200000
Conductivity (S/m)	0.910000
Power Variation (%)	1.810000
Ambient Temperature	21.1
Liquid Temperature	21.3



Maximum location: X=-10.00, Y=12.00

SAR 10g (W/Kg)	0.029937
SAR 1g (W/Kg)	0.056167

Z (mm)	0.00	4.00	9.00	14.00	19.00
SAR (W/Kg)	0.0000	0.0606	0.0319	0.0169	0.0095



<p>3D screen shot</p>	<p>Hot spot position</p>

MEASUREMENT 26

Type: Phone measurement (Complete)

Date of measurement: 06/03/2014

Measurement duration: 12 minutes 3 seconds

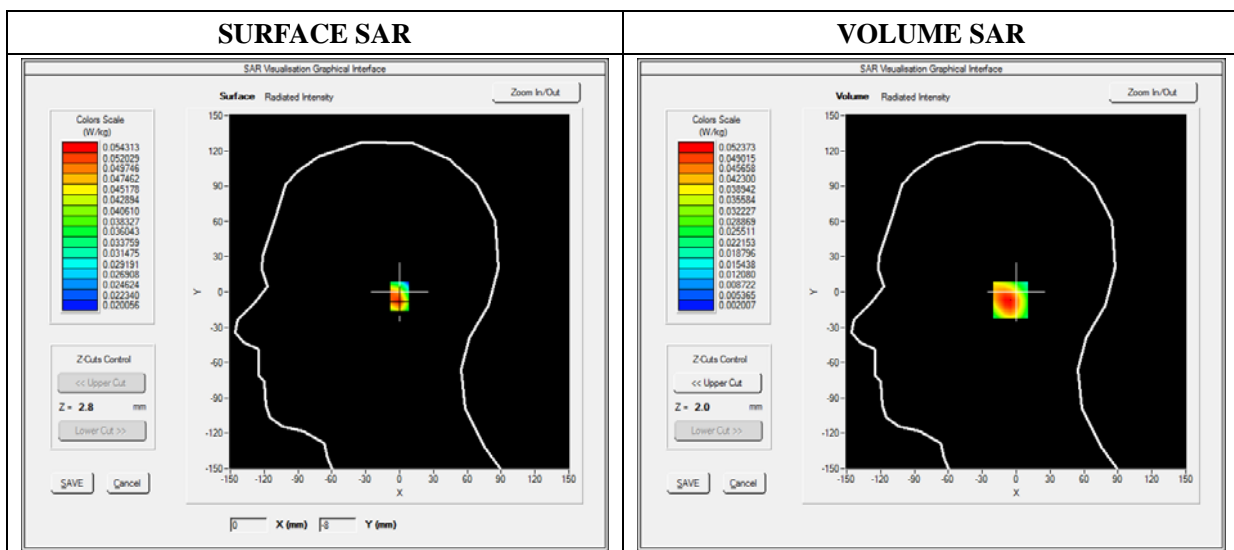
E-field Probe: SSE5 - SN 09/13 EP168; ConvF: 6.25; Calibrated: 03/21/2014

A. Experimental conditions

Area Scan	sam_direct_droit2_surf8mm.txt
Phantom	Left head
Device Position	Tilt
Band	WCDMA850_RMC
Channels	High
Signal	Duty Cycle: 1.00 (Crest factor: 1.0)

B. SAR Measurement Results

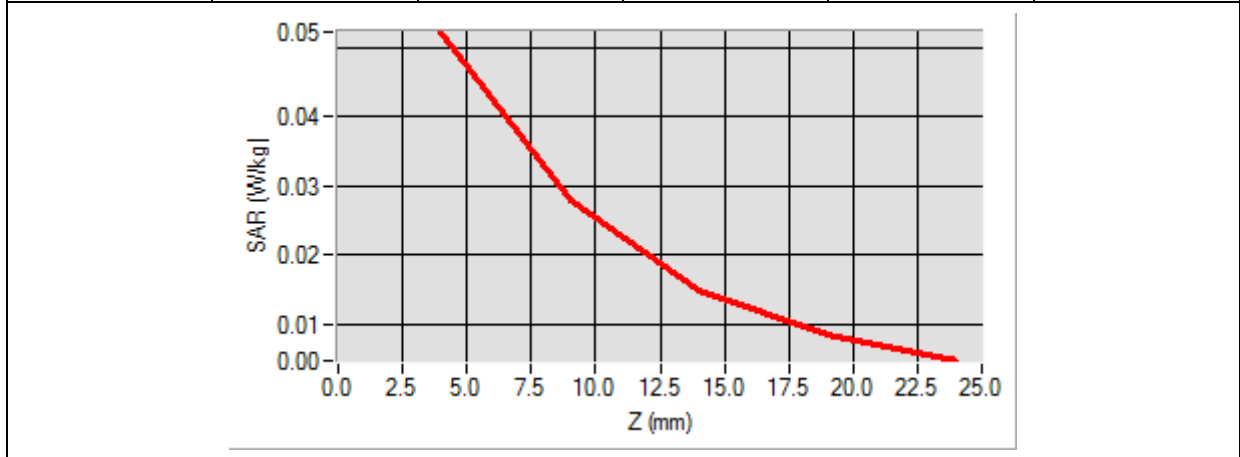
Frequency (MHz)	846.600000
Relative Permittivity (real part)	40.0200000
Conductivity (S/m)	0.910000
Power Variation (%)	1.810000
Ambient Temperature	21.1
Liquid Temperature	21.3



Maximum location: X=-2.00, Y=-7.00

SAR 10g (W/Kg)	0.026827
SAR 1g (W/Kg)	0.049301

Z (mm)	0.00	4.00	9.00	14.00	19.00
SAR (W/Kg)	0.0000	0.0524	0.0279	0.0149	0.0083



<p>3D screen shot</p>	<p>Hot spot position</p>

MEASUREMENT 27

Type: Phone measurement (Complete)

Date of measurement: 06/03/2014

Measurement duration: 12 minutes 3 seconds

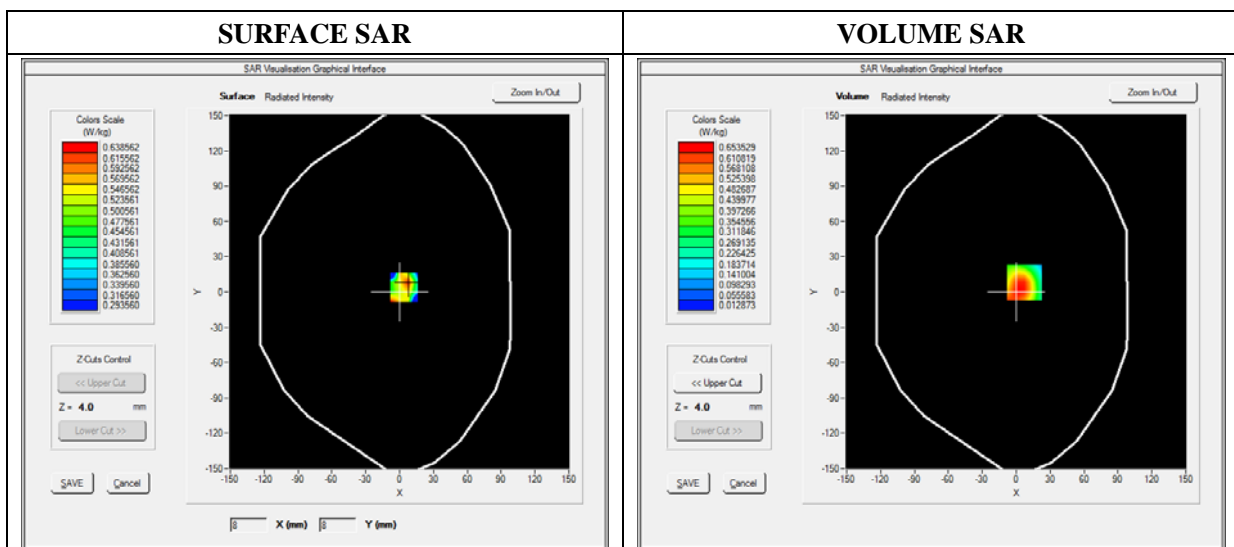
E-field Probe: SSE5 - SN 09/13 EP168; ConvF: 6.50; Calibrated: 03/21/2014

A. Experimental conditions

Area Scan	sam_direct_droit2_surf8mm.txt
Phantom	Flat Plane
Device Position	Back
Band	WCDMA850_RMC
Channels	High
Signal	Duty Cycle: 1.00 (Crest factor: 1.00)

B. SAR Measurement Results

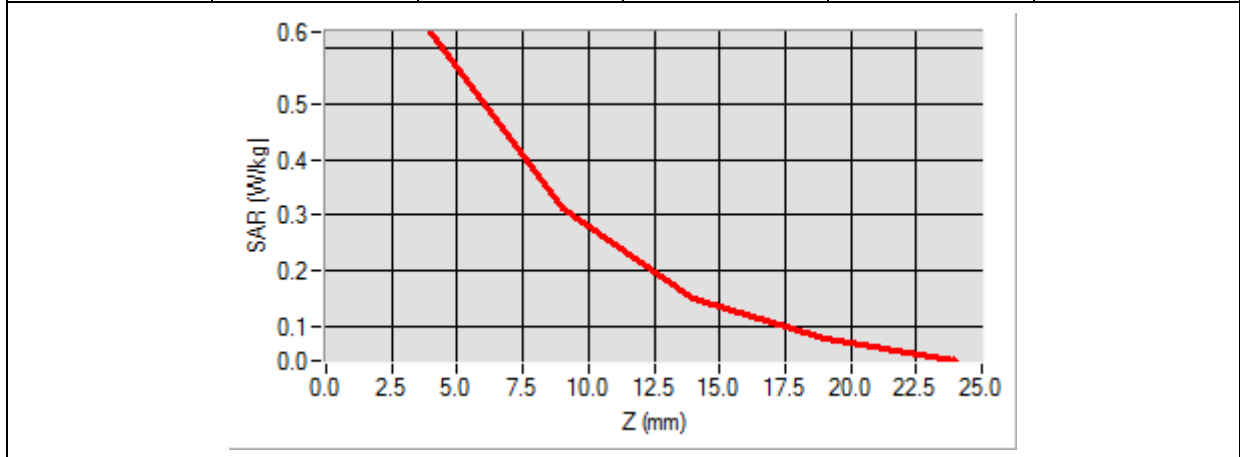
Frequency (MHz)	846.600000
Relative Permittivity (real part)	52.124510
Conductivity (S/m)	0.960000
Power Variation (%)	0.800000
Ambient Temperature	21.1
Liquid Temperature	21.3



Maximum location: X=7.00, Y=8.00

SAR 10g (W/Kg)	0.321405
SAR 1g (W/Kg)	0.419191

Z (mm)	0.00	4.00	9.00	14.00	19.00
SAR (W/Kg)	0.0000	0.5300	0.3112	0.1513	0.0770



<p>3D screen shot</p>	<p>Hot spot position</p>

MEASUREMENT 28

Type: Phone measurement (Complete)

Date of measurement: 06/03/2014

Measurement duration: 12 minutes 3 seconds

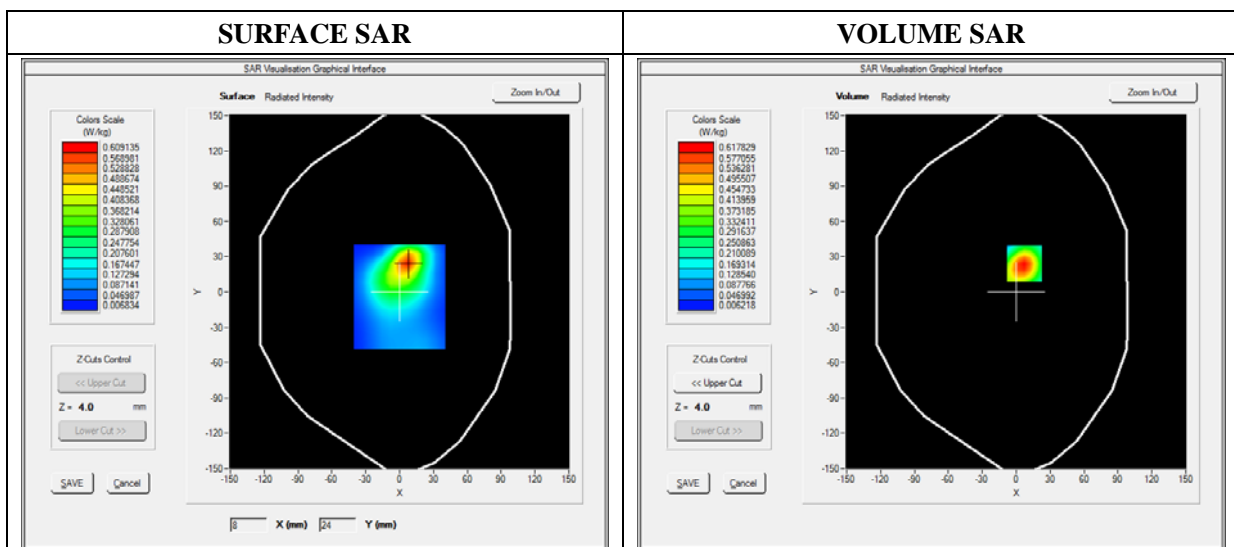
E-field Probe: SSE5 - SN 09/13 EP168; ConvF: 6.50; Calibrated: 03/21/2014

A. Experimental conditions

Area Scan	sam_direct_droit2_surf8mm.txt
Phantom	Flat Plane
Device Position	Bottom
Band	WCDMA850_RMC
Channels	High
Signal	Duty Cycle: 1.00 (Crest factor: 1.00)

B. SAR Measurement Results

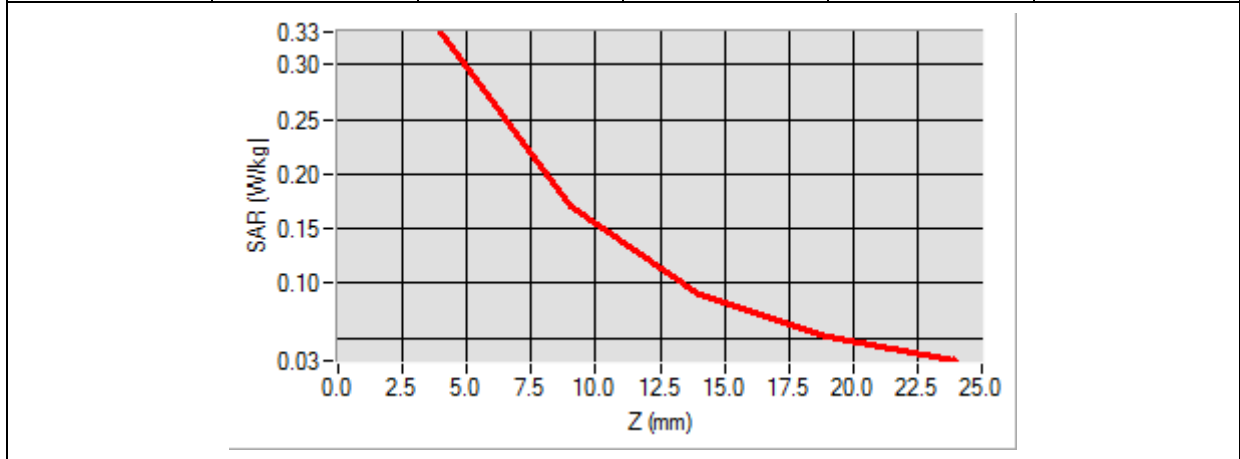
Frequency (MHz)	846.600000
Relative Permittivity (real part)	52.124510
Conductivity (S/m)	0.960000
Power Variation (%)	0.800000
Ambient Temperature	21.1
Liquid Temperature	21.3



Maximum location: X=10.00, Y=-1.00

SAR 10g (W/Kg)	0.149500
SAR 1g (W/Kg)	0.298271

Z (mm)	0.00	4.00	9.00	14.00	19.00
SAR (W/Kg)	0.0000	0.3303	0.1709	0.0894	0.0506



3D screen shot	Hot spot position

MEASUREMENT 29

Type: Phone measurement (Complete)

Date of measurement: 06/03/2014

Measurement duration: 12 minutes 3 seconds

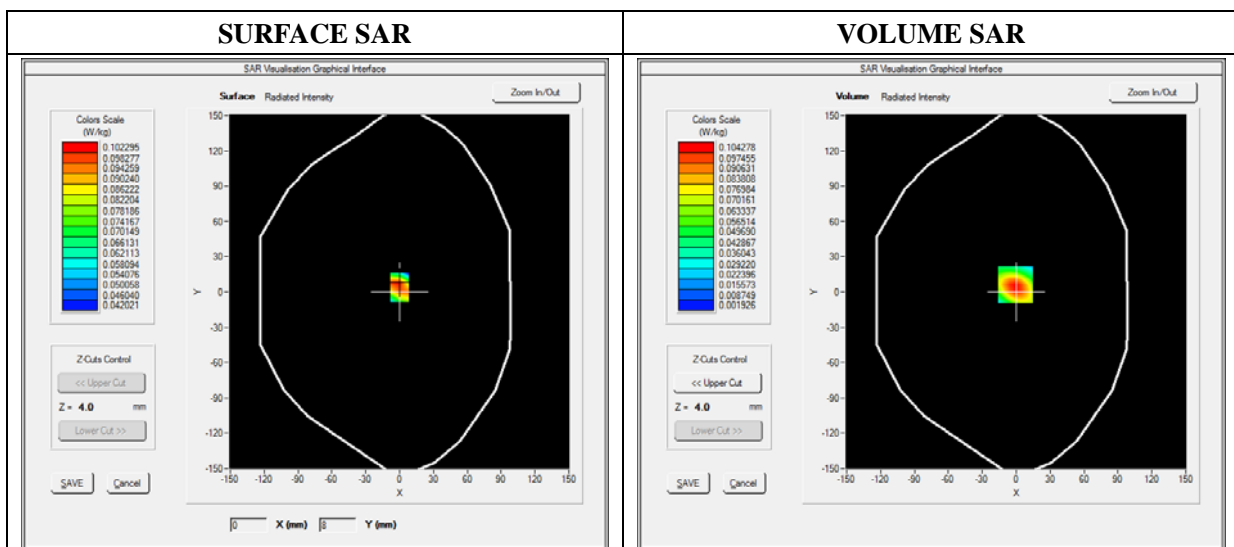
E-field Probe: SSE5 - SN 09/13 EP168; ConvF: 6.50; Calibrated: 03/21/2014

A. Experimental conditions

Area Scan	sam_direct_droit2_surf8mm.txt
Phantom	Flat Plane
Device Position	Right side
Band	WCDMA850_RMC
Channels	High
Signal	Duty Cycle: 1.00 (Crest factor: 1.00)

B. SAR Measurement Results

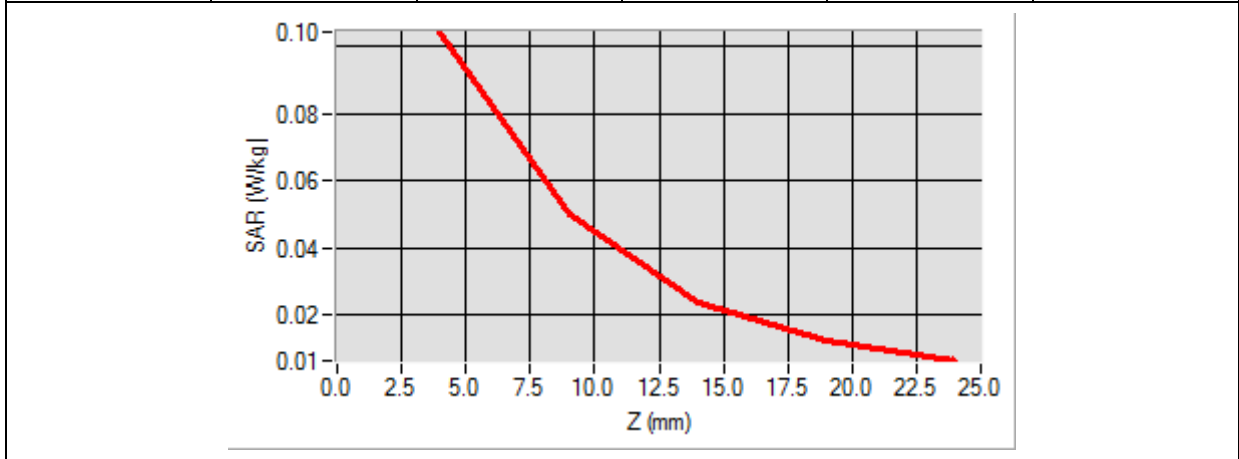
Frequency (MHz)	846.600000
Relative Permittivity (real part)	52.124510
Conductivity (S/m)	0.960000
Power Variation (%)	0.800000
Ambient Temperature	21.1
Liquid Temperature	21.3



Maximum location: X=-1.00, Y=6.00

SAR 10g (W/Kg)	0.048637
SAR 1g (W/Kg)	0.097261

Z (mm)	0.00	4.00	9.00	14.00	19.00
SAR (W/Kg)	0.0000	0.1043	0.0499	0.0238	0.0123



<p>3D screen shot</p>	<p>Hot spot position</p>

MEASUREMENT 30

Type: Phone measurement (Complete)

Date of measurement: 06/03/2014

Measurement duration: 12 minutes 3 seconds

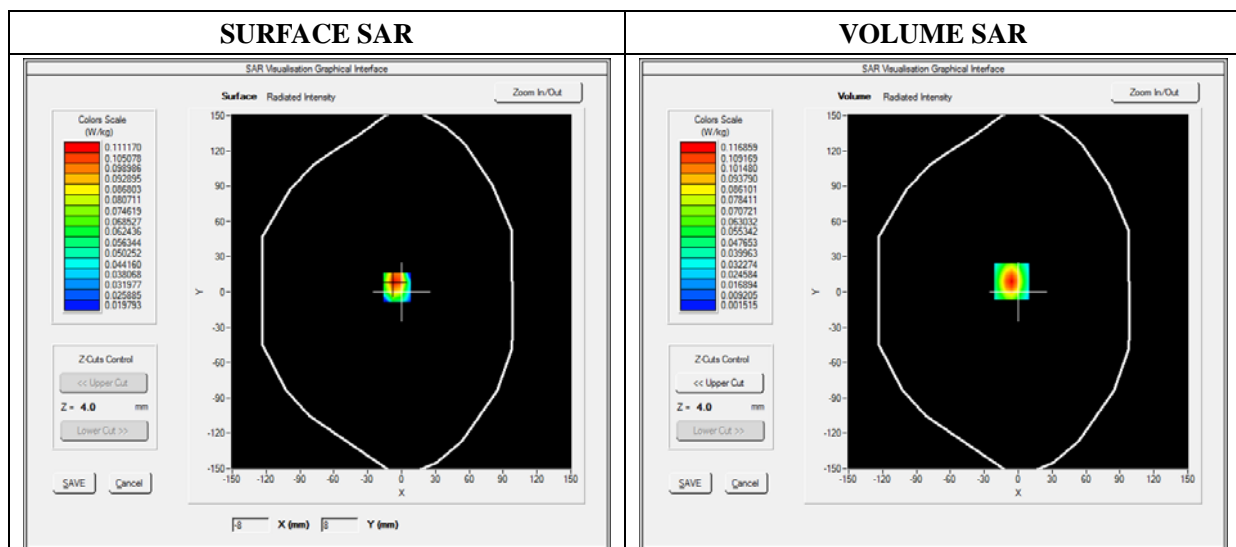
E-field Probe: SSE5 - SN 09/13 EP168; ConvF: 6.50; Calibrated: 03/21/2014

A. Experimental conditions

Area Scan	sam_direct_droit2_surf8mm.txt
Phantom	Flat Plane
Device Position	Left side
Band	WCDMA850_RMC
Channels	High
Signal	Duty Cycle: 1.00 (Crest factor: 1.00)

B. SAR Measurement Results

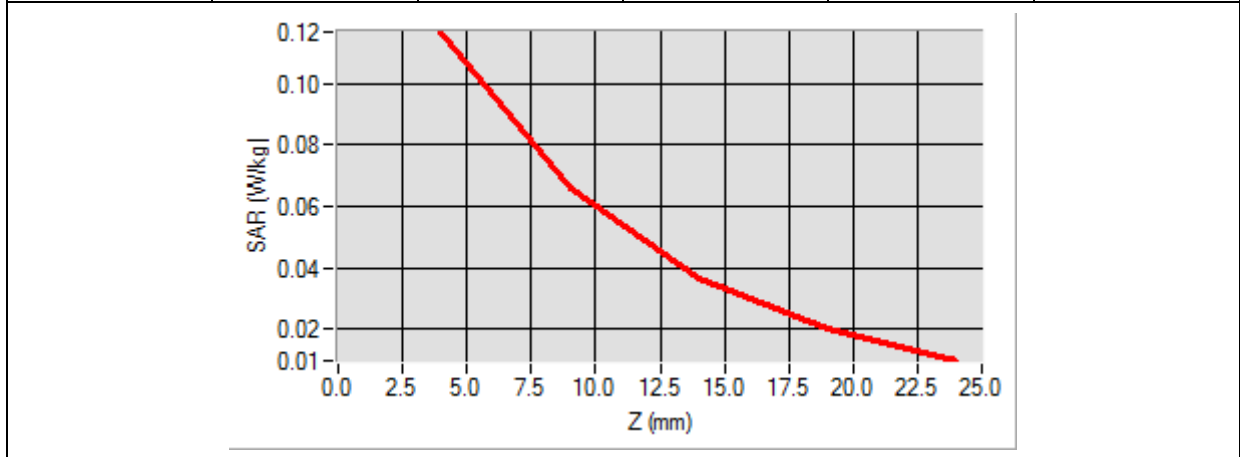
Frequency (MHz)	846.600000
Relative Permittivity (real part)	52.124510
Conductivity (S/m)	0.960000
Power Variation (%)	0.800000
Ambient Temperature	21.1
Liquid Temperature	21.3



Maximum location: X=-6.00, Y=9.00

SAR 10g (W/Kg)	0.034642
SAR 1g (W/Kg)	0.081510

Z (mm)	0.00	4.00	9.00	14.00	19.00
SAR (W/Kg)	0.0000	0.0915	0.0512	0.0216	0.0102



<p>3D screen shot</p>	<p>Hot spot position</p>

MEASUREMENT 31

Type: Phone measurement (Complete)

Date of measurement: 06/03/2014

Measurement duration: 12 minutes 3 seconds

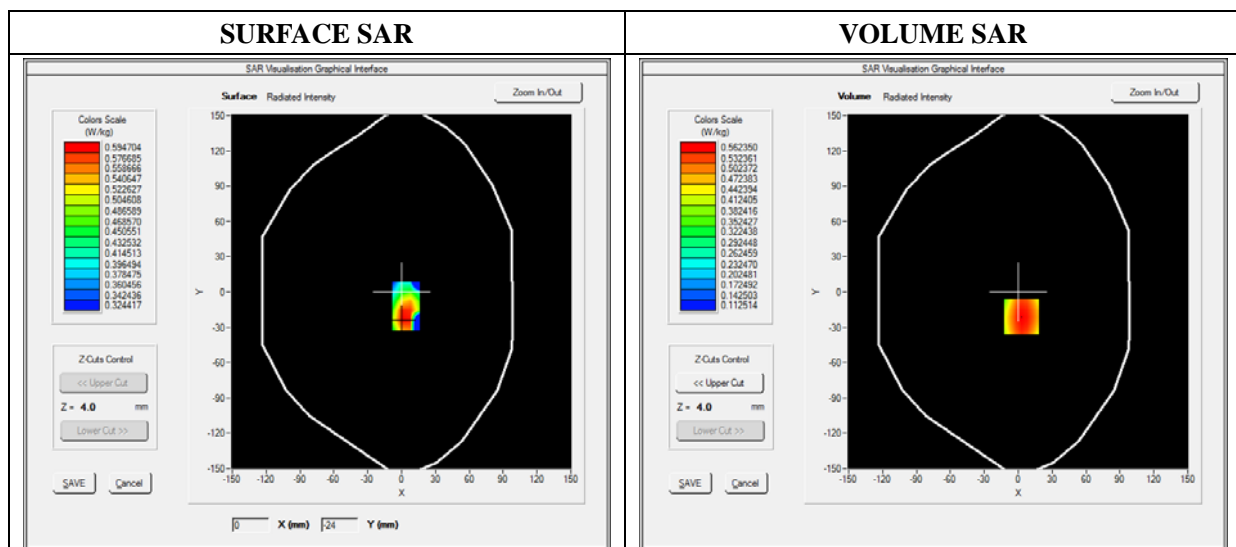
E-field Probe: SSE5 - SN 09/13 EP168; ConvF: 6.50; Calibrated: 03/21/2014

A. Experimental conditions

Area Scan	sam_direct_droit2_surf8mm.txt
Phantom	Flat Plane
Device Position	Back(Body with headset)
Band	WCDMA850_RMC
Channels	High
Signal	Duty Cycle: 1.00 (Crest factor: 1.00)

B. SAR Measurement Results

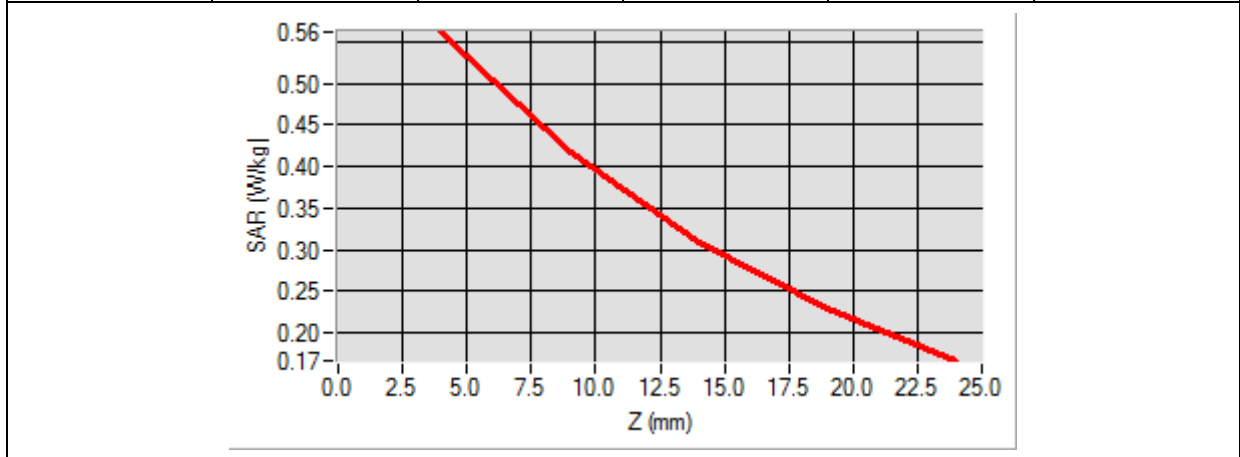
Frequency (MHz)	846.600000
Relative Permittivity (real part)	52.124510
Conductivity (S/m)	0.960000
Power Variation (%)	0.800000
Ambient Temperature	21.1
Liquid Temperature	21.3



Maximum location: X=3.00, Y=-21.00

SAR 10g (W/Kg)	0.380206
SAR 1g (W/Kg)	0.538877

Z (mm)	0.00	4.00	9.00	14.00	19.00
SAR (W/Kg)	0.0000	0.5624	0.4173	0.3095	0.2293



3D screen shot	Hot spot position

MEASUREMENT 32

Type: Phone measurement (Complete)

Date of measurement: 06/03/2014

Measurement duration: 12 minutes 3 seconds

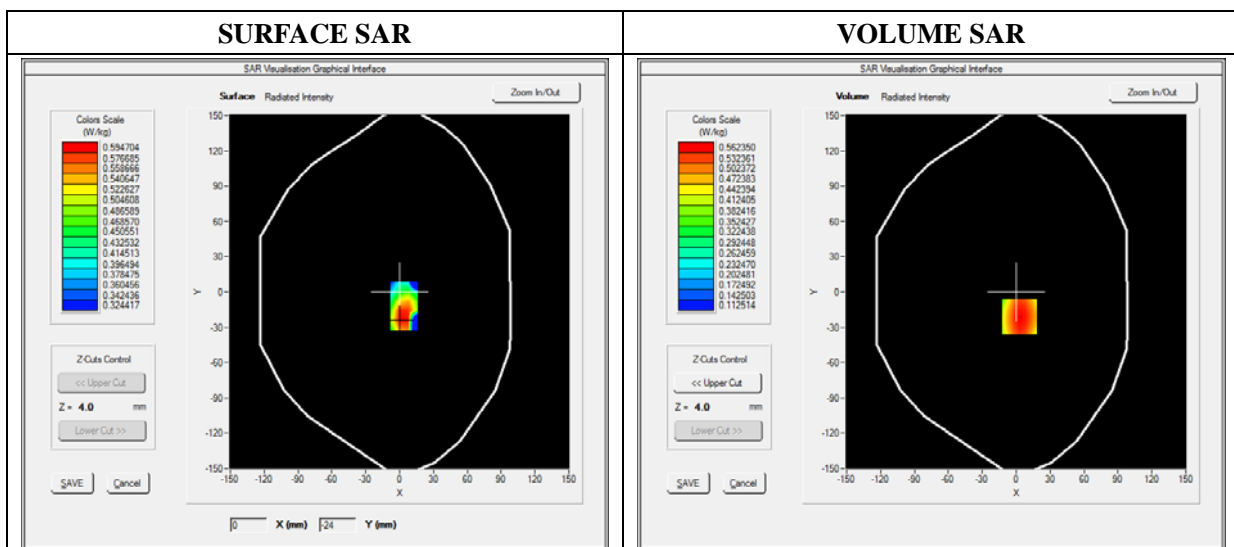
E-field Probe: SSE5 - SN 09/13 EP168; ConvF: 6.50; Calibrated: 03/21/2014

A. Experimental conditions

Area Scan	sam_direct_droit2_surf8mm.txt
Phantom	Flat Plane
Device Position	Front(Body with headset)
Band	WCDMA850_RMC
Channels	High
Signal	Duty Cycle: 1.00 (Crest factor: 1.00)

B. SAR Measurement Results

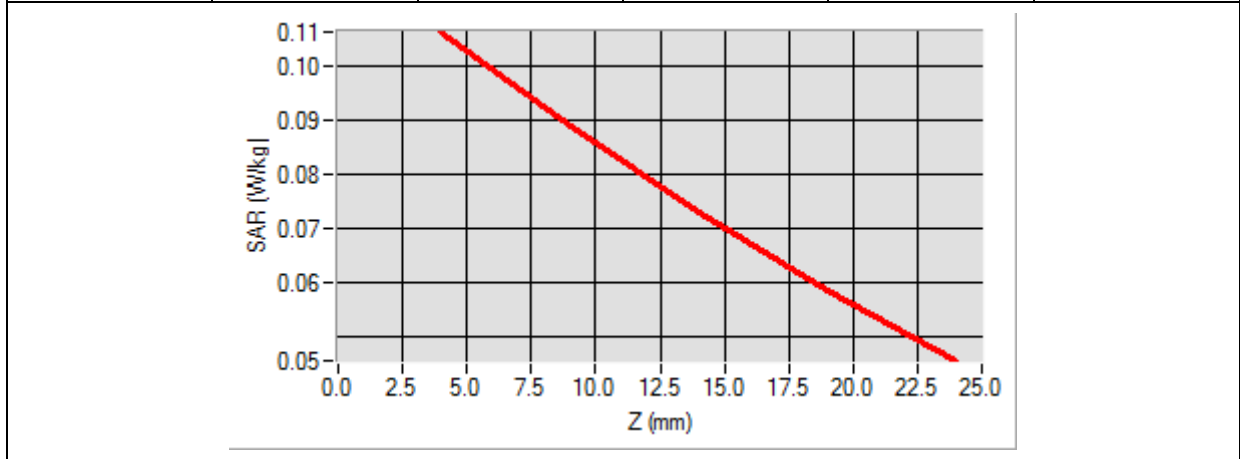
Frequency (MHz)	846.600000
Relative Permittivity (real part)	52.124510
Conductivity (S/m)	0.960000
Power Variation (%)	0.800000
Ambient Temperature	21.1
Liquid Temperature	21.3



Maximum location: X=3.00, Y=-21.00

SAR 10g (W/Kg)	0.083333
SAR 1g (W/Kg)	0.108304

Z (mm)	0.00	4.00	9.00	14.00	19.00
SAR (W/Kg)	0.0000	0.1063	0.0889	0.0729	0.0585



3D screen shot	Hot spot position

MEASUREMENT 33

Type: Phone measurement (Complete)

Date of measurement: 06/03/2014

Measurement duration: 12 minutes 3 seconds

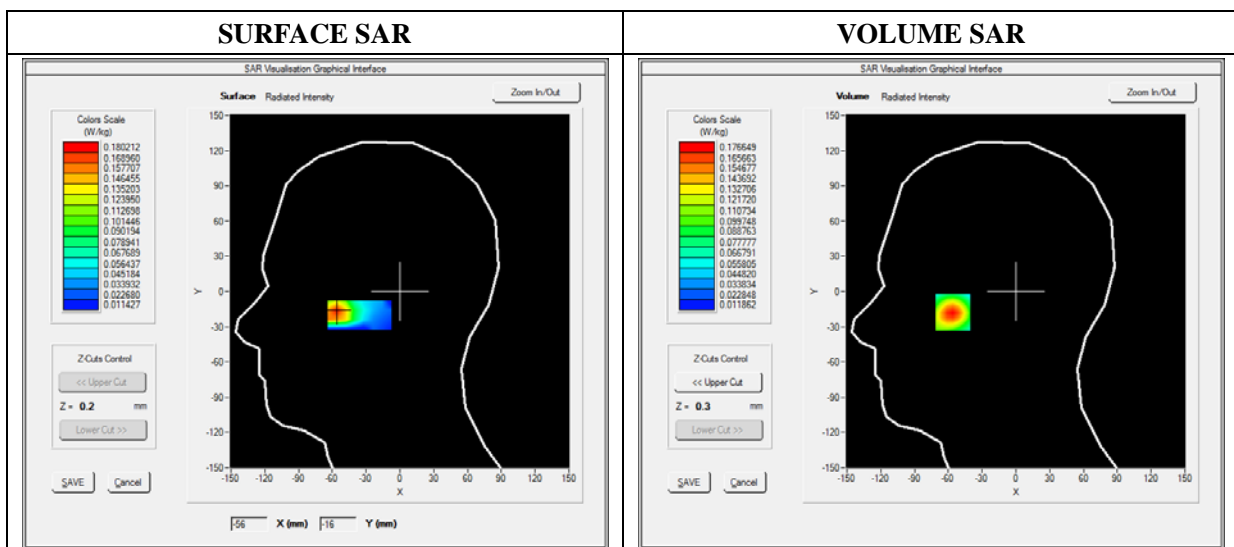
E-field Probe: SSE5 - SN 09/13 EP168; ConvF: 6.25; Calibrated: 03/21/2014

A. Experimental conditions

Area Scan	sam_direct_droit2_surf8mm.txt
Phantom	Right head
Device Position	Cheek
Band	WCDMA1900_RMC
Channels	Low
Signal	Duty Cycle: 1.00 (Crest factor: 1.0)

B. SAR Measurement Results

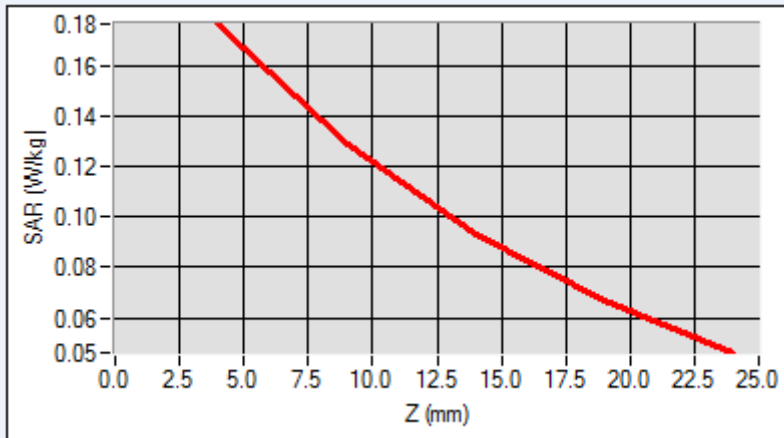
Frequency (MHz)	1852.400000
Relative Permittivity (real part)	38.762140
Conductivity (S/m)	1.781240
Power Variation (%)	1.144120
Ambient Temperature	21.1
Liquid Temperature	21.2



Maximum location: X=-64.00, Y=-18.00

SAR 10g (W/Kg)	0.103194
SAR 1g (W/Kg)	0.162663

Z (mm)	0.00	4.00	9.00	14.00	19.00
SAR (W/Kg)	0.0000	0.1766	0.1289	0.0933	0.0668



<p>3D screen shot</p>	<p>Hot spot position</p>

MEASUREMENT 34

Type: Phone measurement (Complete)

Date of measurement: 06/03/2014

Measurement duration: 12 minutes 3 seconds

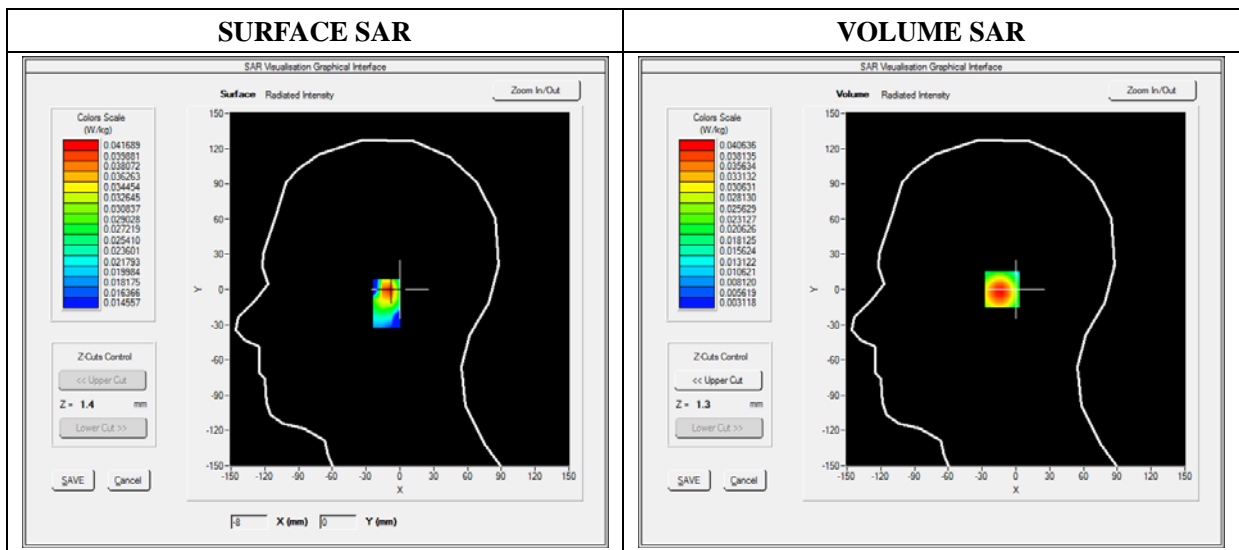
E-field Probe: SSE5 - SN 09/13 EP168; ConvF: 6.25; Calibrated: 03/21/2014

A. Experimental conditions

Area Scan	sam_direct_droit2_surf8mm.txt
Phantom	Right head
Device Position	Tilt
Band	WCDMA1900_RMC
Channels	Low
Signal	Duty Cycle: 1.00 (Crest factor: 1.0)

B. SAR Measurement Results

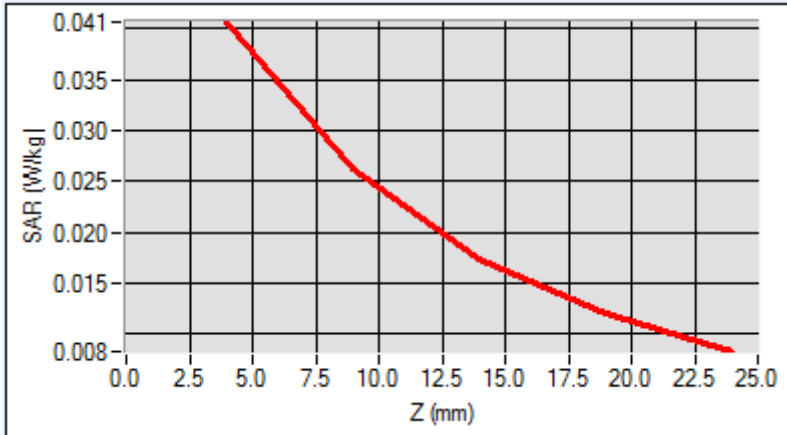
Frequency (MHz)	1852.400000
Relative Permittivity (real part)	38.762140
Conductivity (S/m)	1.781240
Power Variation (%)	1.144120
Ambient Temperature	21.1
Liquid Temperature	21.2



Maximum location: X=-1.00, Y=7.00

SAR 10g (W/Kg)	0.023931
SAR 1g (W/Kg)	0.038222

Z (mm)	0.00	4.00	9.00	14.00	19.00
SAR (W/Kg)	0.0000	0.0406	0.0262	0.0173	0.0173



<p>3D screen shot</p>	<p>Hot spot position</p>

MEASUREMENT 35

Type: Phone measurement (Complete)

Date of measurement: 06/03/2014

Measurement duration: 12 minutes 3 seconds

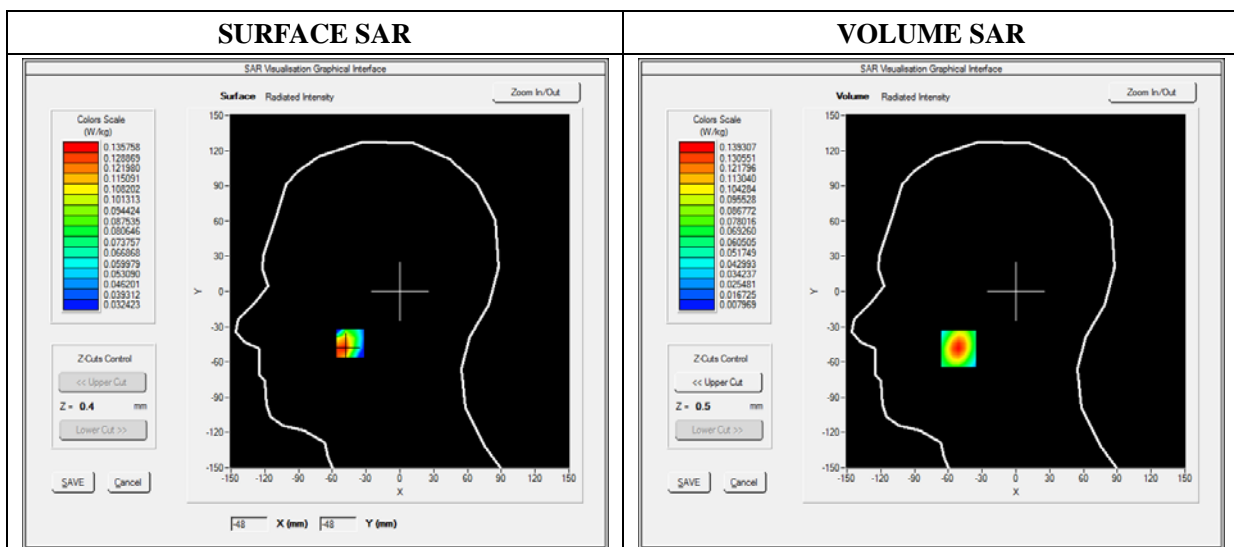
E-field Probe: SSE5 - SN 09/13 EP168; ConvF: 6.25; Calibrated: 03/21/2014

A. Experimental conditions

Area Scan	sam_direct_droit2_surf8mm.txt
Phantom	Left head
Device Position	Cheek
Band	WCDMA1900_RMC
Channels	Low
Signal	Duty Cycle: 1.00 (Crest factor: 1.0)

B. SAR Measurement Results

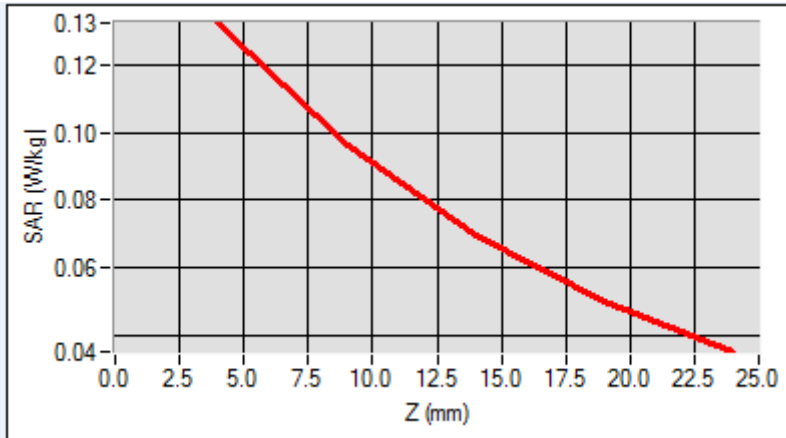
Frequency (MHz)	1852.400000
Relative Permittivity (real part)	38.762140
Conductivity (S/m)	1.781240
Power Variation (%)	1.144120
Ambient Temperature	21.1
Liquid Temperature	21.2



Maximum location: X=-56.00, Y=-32.00

SAR 10g (W/Kg)	0.075071
SAR 1g (W/Kg)	0.121241

Z (mm)	0.00	4.00	9.00	14.00	19.00
SAR (W/Kg)	0.0000	0.1324	0.0962	0.0697	0.0502



<p>3D screen shot</p>	<p>Hot spot position</p>

MEASUREMENT 36

Type: Phone measurement (Complete)

Date of measurement: 06/03/2014

Measurement duration: 12 minutes 3 seconds

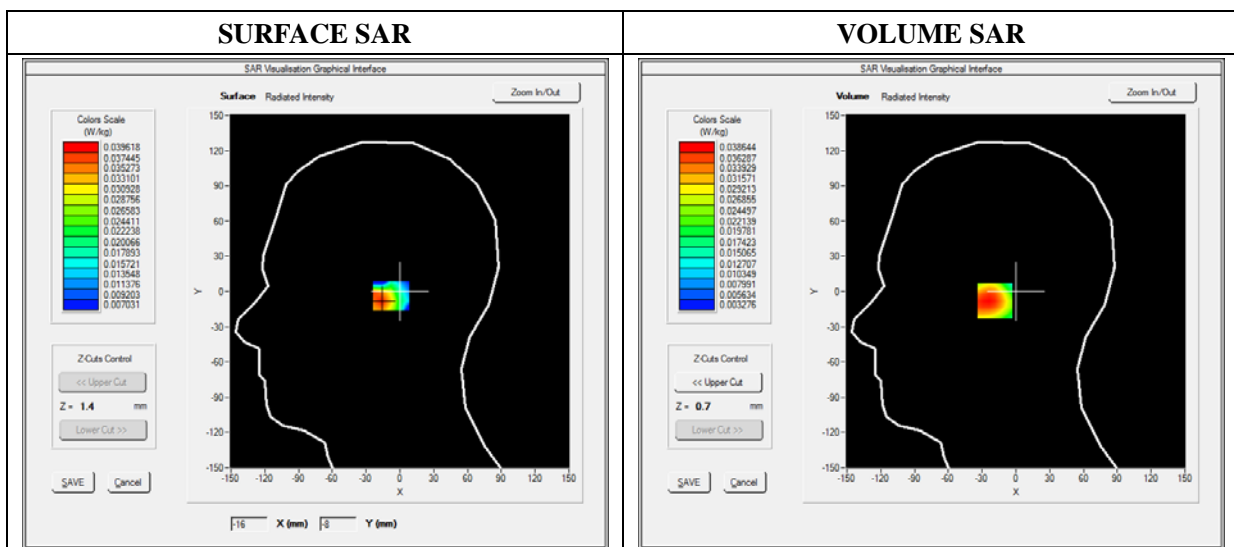
E-field Probe: SSE5 - SN 09/13 EP168; ConvF: 6.25; Calibrated: 03/21/2014

A. Experimental conditions

Area Scan	sam_direct_droit2_surf8mm.txt
Phantom	Left head
Device Position	Tilt
Band	WCDMA1900_RMC
Channels	Low
Signal	Duty Cycle: 1.00 (Crest factor: 1.0)

B. SAR Measurement Results

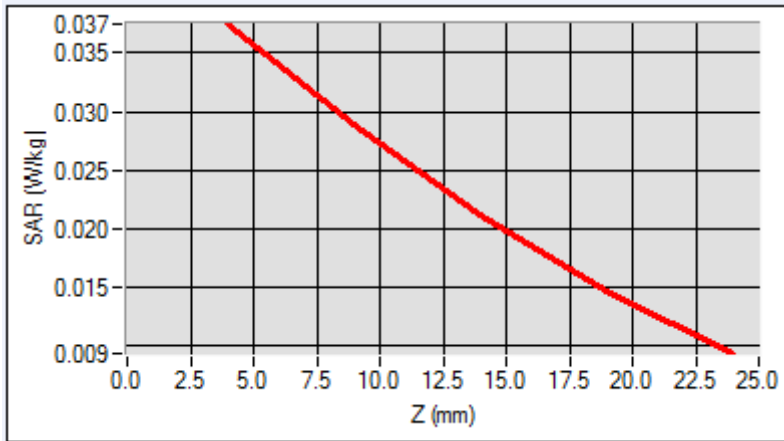
Frequency (MHz)	1852.400000
Relative Permittivity (real part)	38.762140
Conductivity (S/m)	1.781240
Power Variation (%)	1.144120
Ambient Temperature	21.1
Liquid Temperature	21.2



Maximum location: X=-2.00, Y=2.00

SAR 10g (W/Kg)	0.024926
SAR 1g (W/Kg)	0.036646

Z (mm)	0.00	4.00	9.00	14.00	19.00
SAR (W/Kg)	0.0000	0.0374	0.0288	0.0212	0.0147



3D screen shot	Hot spot position

MEASUREMENT 37

Type: Phone measurement (Complete)

Date of measurement: 06/03/2014

Measurement duration: 12 minutes 3 seconds

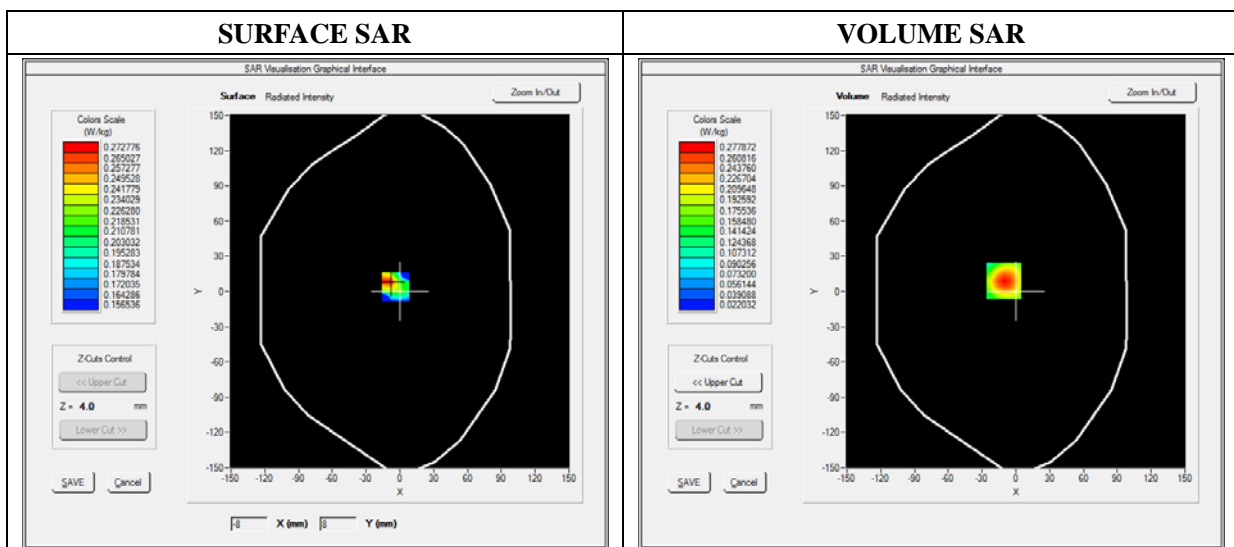
E-field Probe: SSE5 - SN 09/13 EP168; ConvF: 6.30; Calibrated: 03/21/2014

A. Experimental conditions

Area Scan	sam_direct_droit2_surf8mm.txt
Phantom	Flat Plane
Device Position	Back
Band	WCDMA1900_RMC
Channels	Low
Signal	Duty Cycle: 1.00 (Crest factor: 1.00)

B. SAR Measurement Results

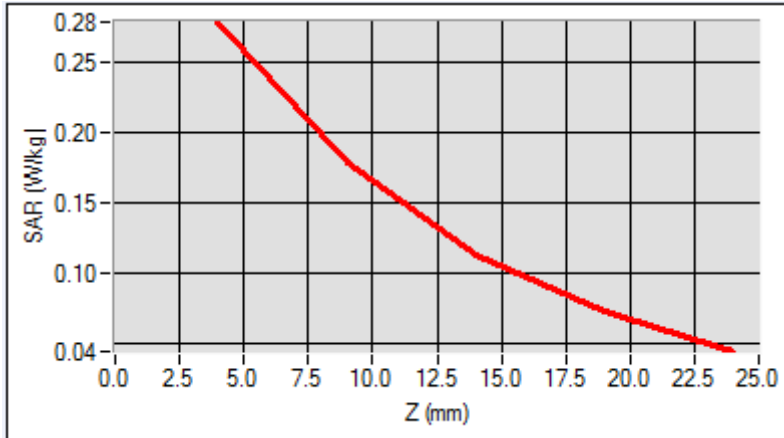
Frequency (MHz)	1852.400000
Relative Permittivity (real part)	51.361240
Conductivity (S/m)	1.510000
Power Variation (%)	0.752100
Ambient Temperature	21.1
Liquid Temperature	21.3



Maximum location: X=-11.00, Y=-34.00

SAR 10g (W/Kg)	0.153271
SAR 1g (W/Kg)	0.257619

Z (mm)	0.00	4.00	9.00	14.00	19.00
SAR (W/Kg)	0.0000	0.2778	0.1771	0.1125	0.0716



3D screen shot	Hot spot position

MEASUREMENT 38

Type: Phone measurement (Complete)

Date of measurement: 06/03/2014

Measurement duration: 12 minutes 3 seconds

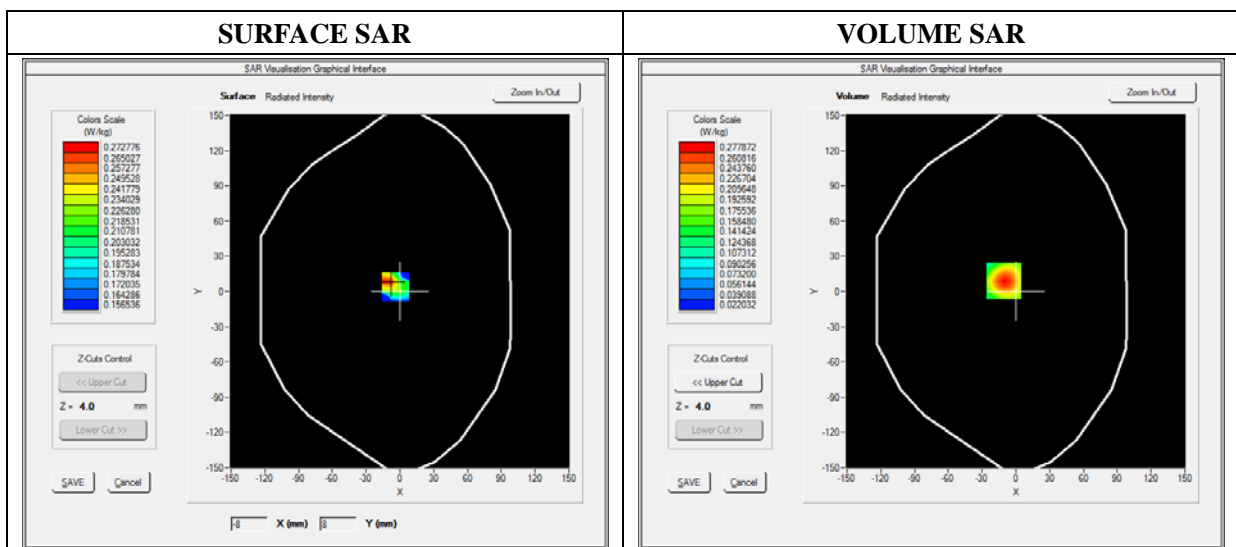
E-field Probe: SSE5 - SN 09/13 EP168; ConvF: 6.30; Calibrated: 03/21/2014

A. Experimental conditions

Area Scan	sam_direct_droit2_surf8mm.txt
Phantom	Flat Plane
Device Position	Bottom
Band	WCDMA1900_RMC
Channels	Low
Signal	Duty Cycle: 1.00 (Crest factor: 1.00)

B. SAR Measurement Results

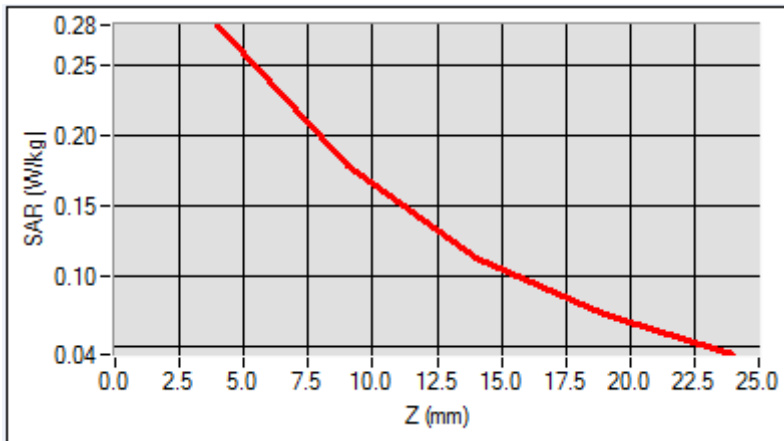
Frequency (MHz)	1852.400000
Relative Permittivity (real part)	51.361240
Conductivity (S/m)	1.510000
Power Variation (%)	0.752100
Ambient Temperature	21.1
Liquid Temperature	21.3



Maximum location: X=-11.00, Y=-34.00

SAR 10g (W/Kg)	0.079120
SAR 1g (W/Kg)	0.101359

Z (mm)	0.00	4.00	9.00	14.00	19.00
SAR (W/Kg)	0.0000	0.2523	0.1123	0.0859	0.0759



<p>3D screen shot</p>	<p>Hot spot position</p>

MEASUREMENT 39

Type: Phone measurement (Complete)

Date of measurement: 06/03/2014

Measurement duration: 12 minutes 3 seconds

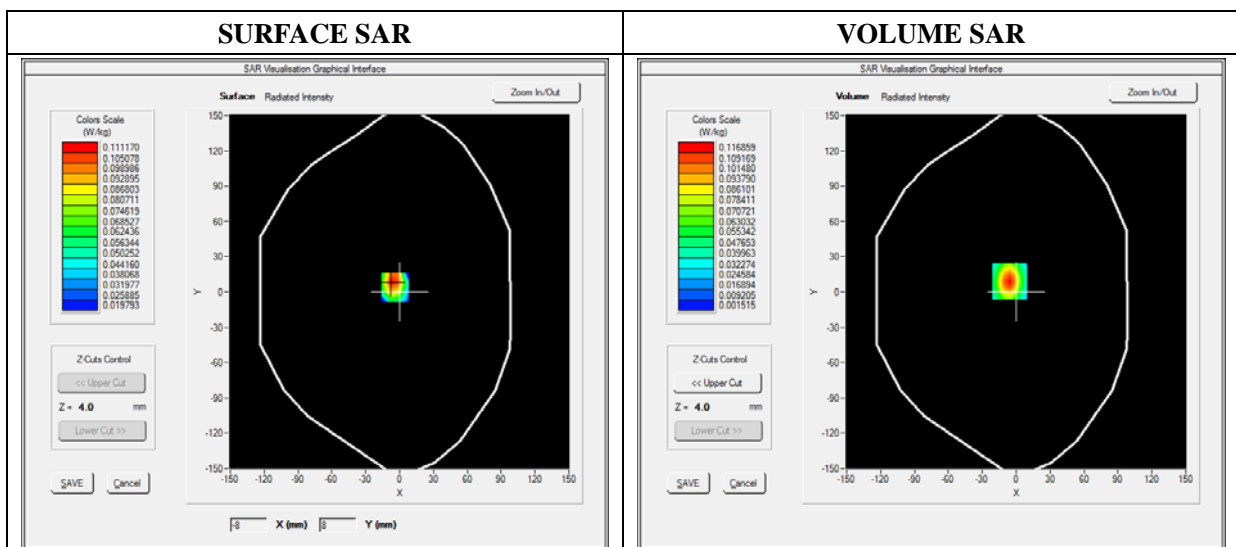
E-field Probe: SSE5 - SN 09/13 EP168; ConvF: 6.30; Calibrated: 03/21/2014

A. Experimental conditions

Area Scan	sam_direct_droit2_surf8mm.txt
Phantom	Flat Plane
Device Position	Right side
Band	WCDMA1900_RMC
Channels	Low
Signal	Duty Cycle: 1.00 (Crest factor: 1.00)

B. SAR Measurement Results

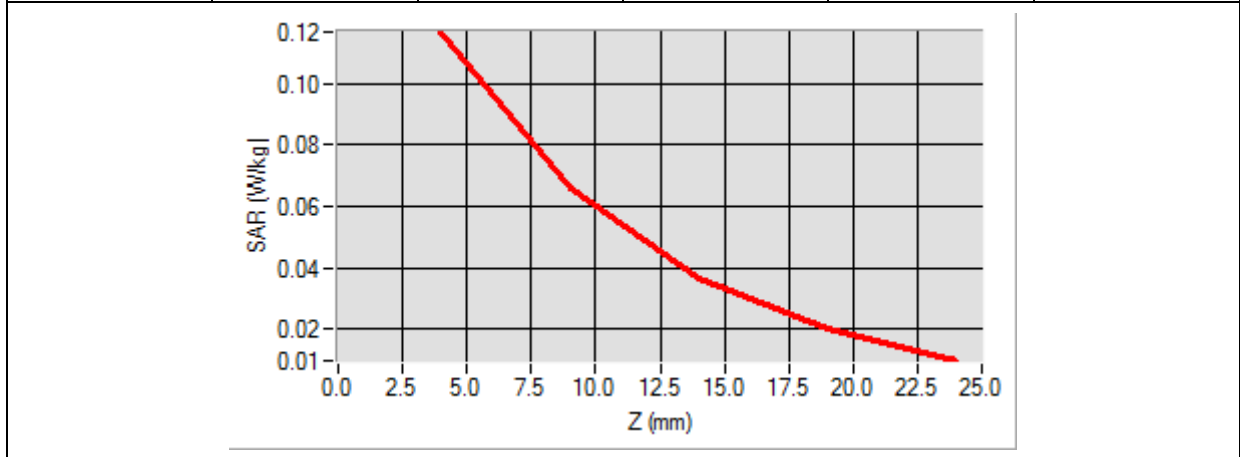
Frequency (MHz)	1852.400000
Relative Permittivity (real part)	51.361240
Conductivity (S/m)	1.510000
Power Variation (%)	0.752100
Ambient Temperature	21.1
Liquid Temperature	21.3



Maximum location: X=-6.00, Y=9.00

SAR 10g (W/Kg)	0.034642
SAR 1g (W/Kg)	0.081510

Z (mm)	0.00	4.00	9.00	14.00	19.00
SAR (W/Kg)	0.0000	0.0915	0.0512	0.0216	0.0102



<p>3D screen shot</p>	<p>Hot spot position</p>

MEASUREMENT 40

Type: Phone measurement (Complete)

Date of measurement: 06/03/2014

Measurement duration: 12 minutes 3 seconds

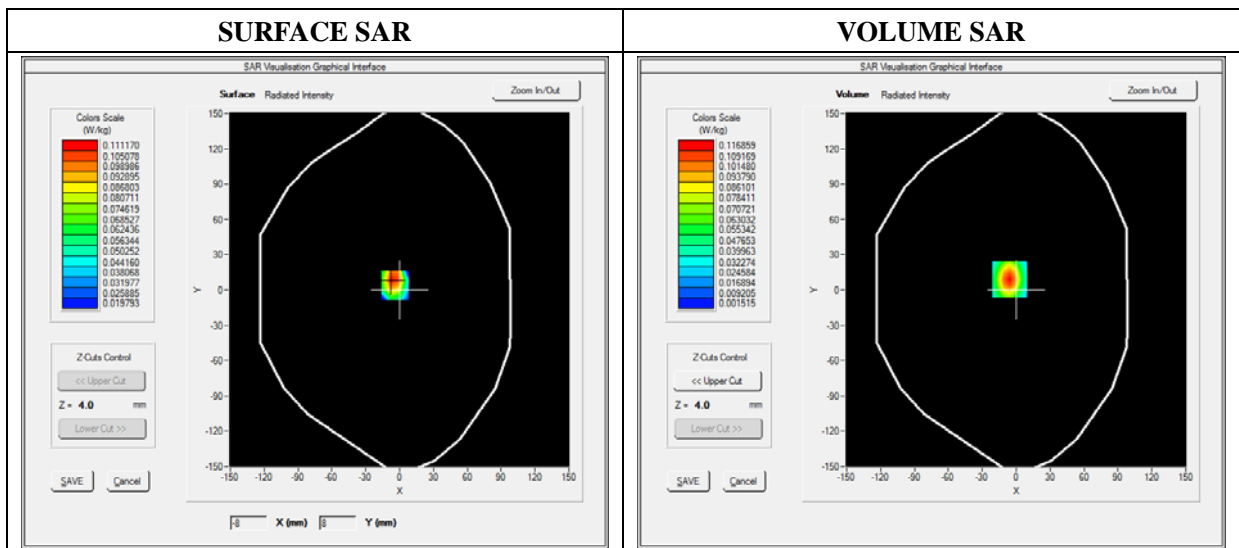
E-field Probe: SSE5 - SN 09/13 EP168; ConvF: 6.30; Calibrated: 03/21/2014

A. Experimental conditions

Area Scan	sam_direct_droit2_surf8mm.txt
Phantom	Flat Plane
Device Position	Left side
Band	WCDMA1900_RMC
Channels	Low
Signal	Duty Cycle: 1.00 (Crest factor: 1.00)

B. SAR Measurement Results

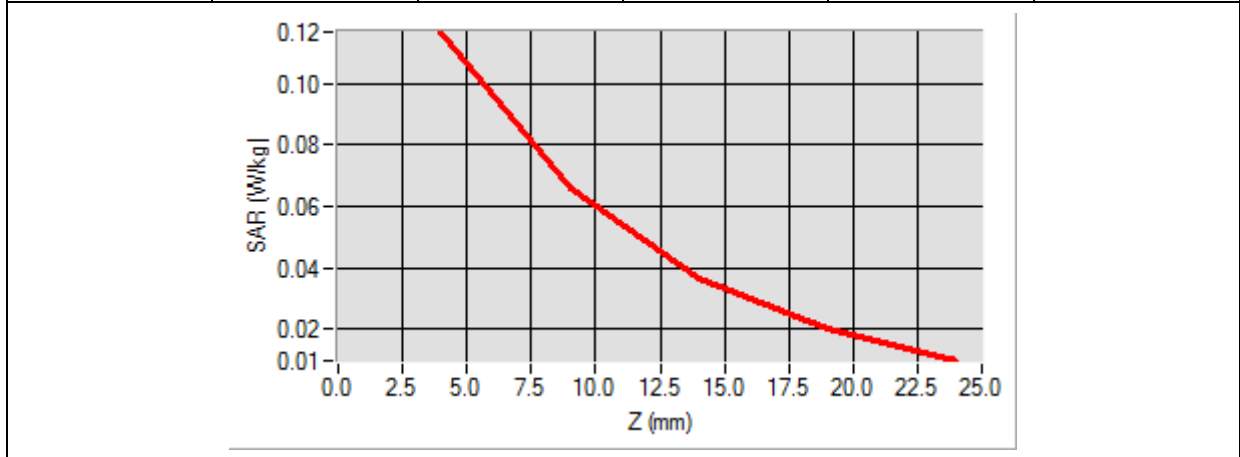
Frequency (MHz)	1852.400000
Relative Permittivity (real part)	51.361240
Conductivity (S/m)	1.510000
Power Variation (%)	0.752100
Ambient Temperature	21.1
Liquid Temperature	21.3



Maximum location: X=-6.00, Y=9.00

SAR 10g (W/Kg)	0.03447
SAR 1g (W/Kg)	0.081421

Z (mm)	0.00	4.00	9.00	14.00	19.00
SAR (W/Kg)	0.0000	0.0912	0.0510	0.0211	0.0100



MEASUREMENT 41

Type: Phone measurement (Complete)

Date of measurement: 06/03/2014

Measurement duration: 12 minutes 3 seconds

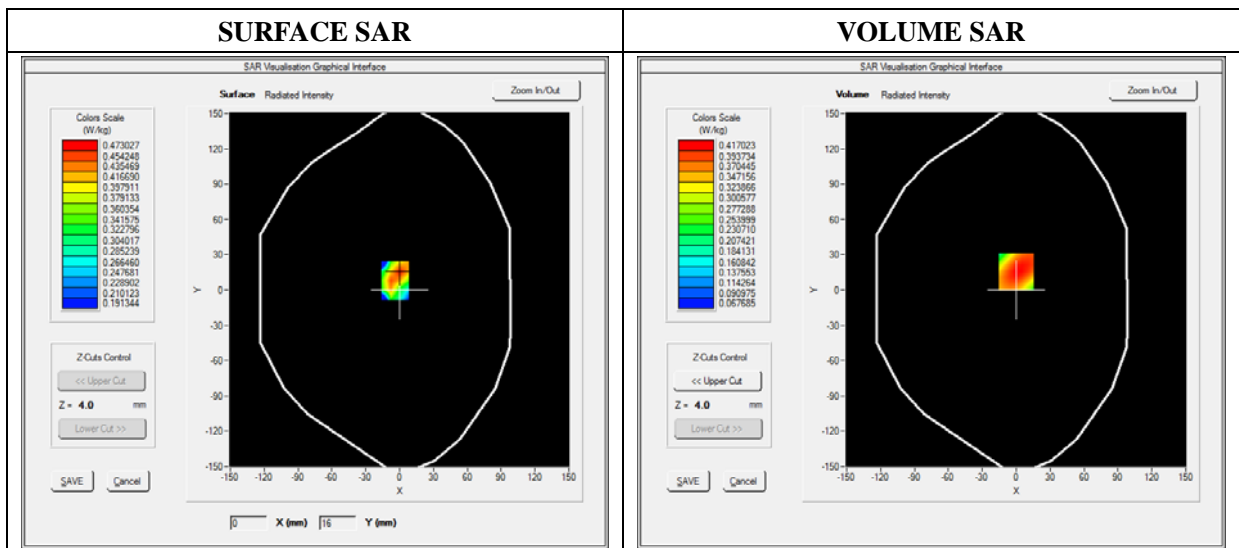
E-field Probe: SSE5 - SN 09/13 EP168; ConvF: 6.30; Calibrated: 03/21/2014

A. Experimental conditions

Area Scan	sam_direct_droit2_surf8mm.txt
Phantom	Flat Plane
Device Position	Back(Body with headset)
Band	WCDMA1900_RMC
Channels	Low
Signal	Duty Cycle: 1.00 (Crest factor: 1.00)

B. SAR Measurement Results

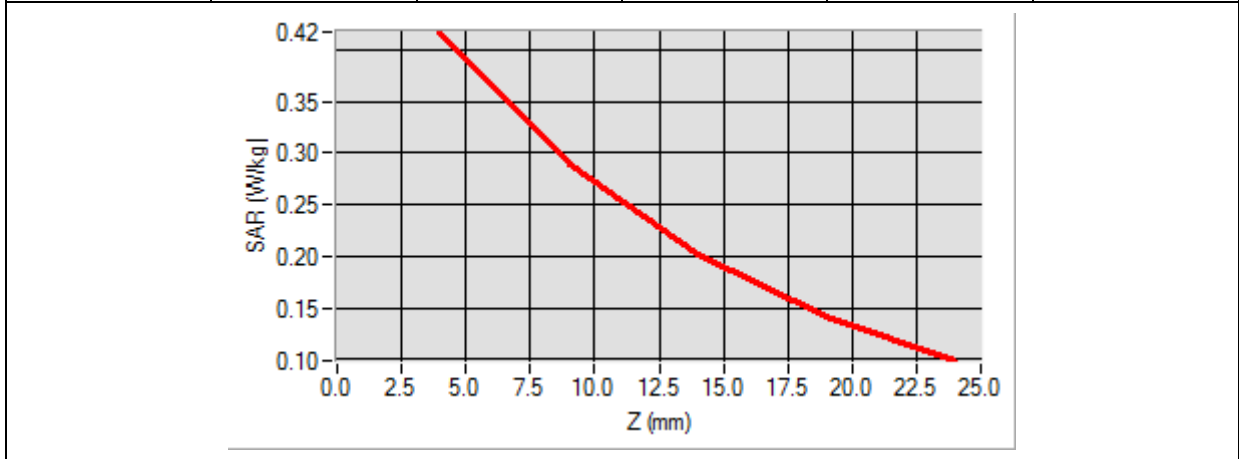
Frequency (MHz)	1852.400000
Relative Permittivity (real part)	51.361240
Conductivity (S/m)	1.510000
Power Variation (%)	0.752100
Ambient Temperature	21.1
Liquid Temperature	21.3



Maximum location: X=0.00, Y=16.00

SAR 10g (W/Kg)	0.292160
SAR 1g (W/Kg)	0.432370

Z (mm)	0.00	4.00	9.00	14.00	19.00
SAR (W/Kg)	0.0000	0.4170	0.2887	0.2014	0.1425



<p>3D screen shot</p>	<p>Hot spot position</p>

MEASUREMENT 42

Type: Phone measurement (Complete)

Date of measurement: 06/03/2014

Measurement duration: 12 minutes 3 seconds

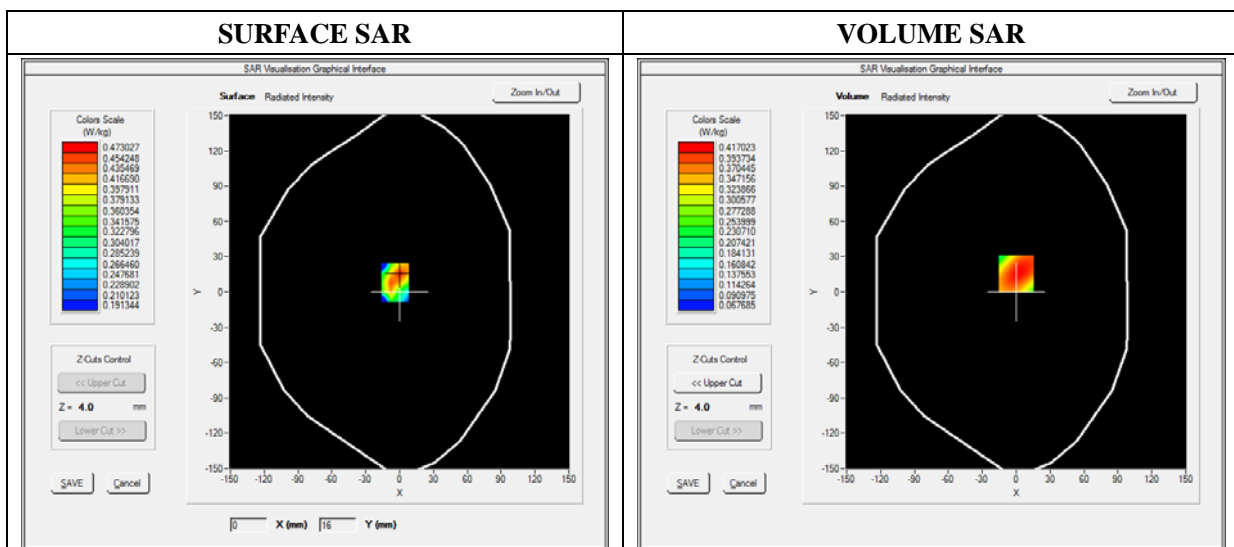
E-field Probe: SSE5 - SN 09/13 EP168; ConvF: 6.30; Calibrated: 03/21/2014

A. Experimental conditions

Area Scan	sam_direct_droit2_surf8mm.txt
Phantom	Flat Plane
Device Position	Front(Body with headset)
Band	WCDMA1900_RMC
Channels	Low
Signal	Duty Cycle: 1.00 (Crest factor: 1.00)

B. SAR Measurement Results

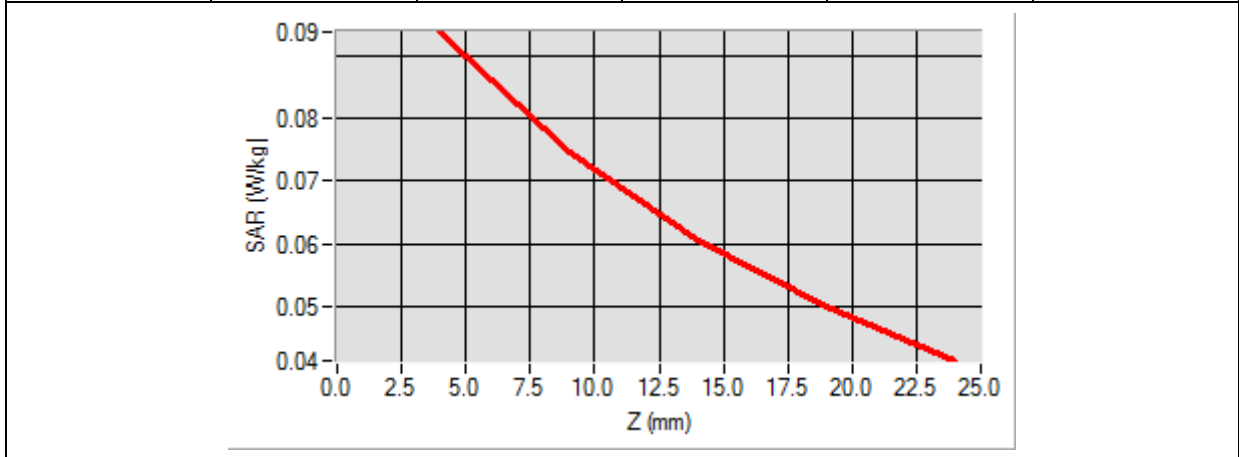
Frequency (MHz)	1852.400000
Relative Permittivity (real part)	51.361240
Conductivity (S/m)	1.510000
Power Variation (%)	0.752100
Ambient Temperature	21.1
Liquid Temperature	21.3



Maximum location: X=0.00, Y=16.00

SAR 10g (W/Kg)	0.070756
SAR 1g (W/Kg)	0.092774

Z (mm)	0.00	4.00	9.00	14.00	19.00
SAR (W/Kg)	0.0000	0.0938	0.0746	0.0604	0.0499



<p>3D screen shot</p>	<p>Hot spot position</p>

MEASUREMENT 43

Type: Phone measurement (Complete)

Date of measurement: 06/03/2014

Measurement duration: 12 minutes 3 seconds

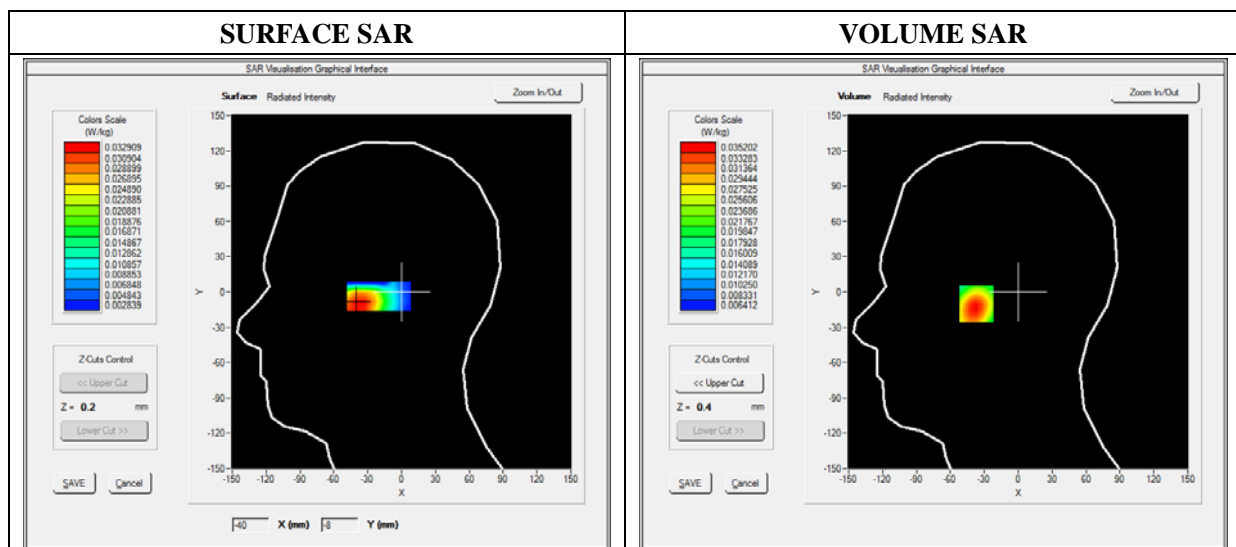
E-field Probe: SSE5 - SN 09/13 EP168; ConvF: 5.51; Calibrated: 2013/03/21

A. Experimental conditions

Area Scan	sam_direct_droit2_surf8mm.txt
Phantom	Right head
Device Position	Cheek
Band	WiFi_802.11b
Channels	High
Signal	Duty Cycle: 1.00 (Crest factor: 1.00)

B. SAR Measurement Results

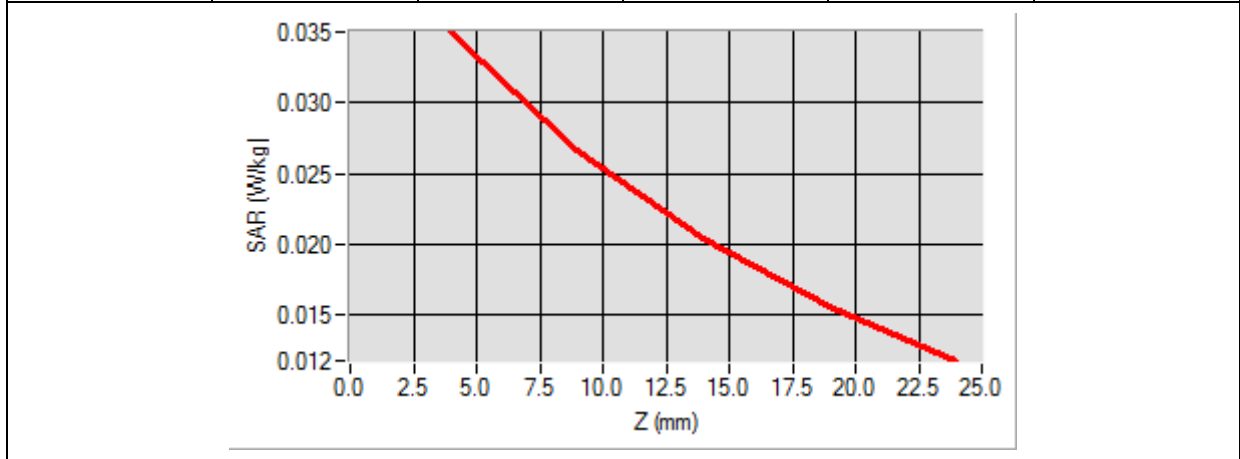
Frequency (MHz)	2472.000000
Relative Permittivity (real part)	38.762140
Conductivity (S/m)	1.781240
Power Variation (%)	1.144120
Ambient Temperature	21.1
Liquid Temperature	21.2



Maximum location: X=-37.00, Y=-10.00

SAR 10g (W/Kg)	0.023521
SAR 1g (W/Kg)	0.033561

Z (mm)	0.00	4.00	9.00	14.00	19.00
SAR (W/Kg)	0.0000	0.0350	0.0267	0.0204	0.0156



3D screen shot	Hot spot position

MEASUREMENT 44

Type: Phone measurement (Complete)

Date of measurement: 06/03/2014

Measurement duration: 12 minutes 3 seconds

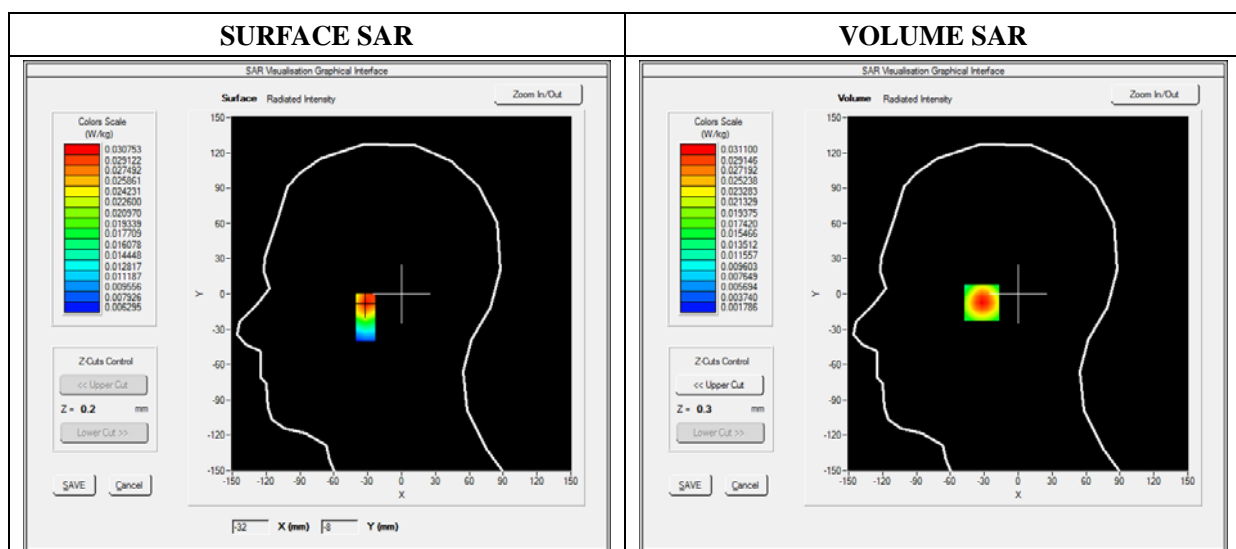
E-field Probe: SSE5 - SN 09/13 EP168; ConvF: 5.51; Calibrated: 2013/03/21

A. Experimental conditions

Area Scan	sam_direct_droit2_surf8mm.txt
Phantom	Right head
Device Position	Tilt
Band	WiFi_802.11b
Channels	High
Signal	Duty Cycle: 1.00 (Crest factor: 1.00)

B. SAR Measurement Results

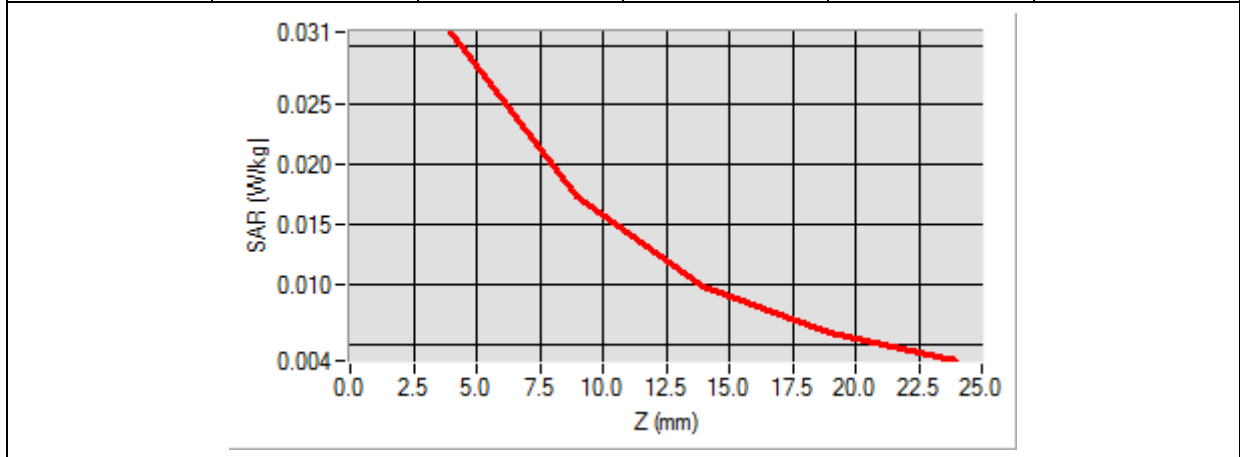
Frequency (MHz)	2472.000000
Relative Permittivity (real part)	38.762140
Conductivity (S/m)	1.781240
Power Variation (%)	1.144120
Ambient Temperature	21.1
Liquid Temperature	21.2



Maximum location: X=-31.00, Y=-7.00

SAR 10g (W/Kg)	0.016004
SAR 1g (W/Kg)	0.028947

Z (mm)	0.00	4.00	9.00	14.00	19.00
SAR (W/Kg)	0.0000	0.0311	0.0174	0.0099	0.0060



3D screen shot	Hot spot position

MEASUREMENT 45

Type: Phone measurement (Complete)

Date of measurement: 06/03/2014

Measurement duration: 12 minutes 3 seconds

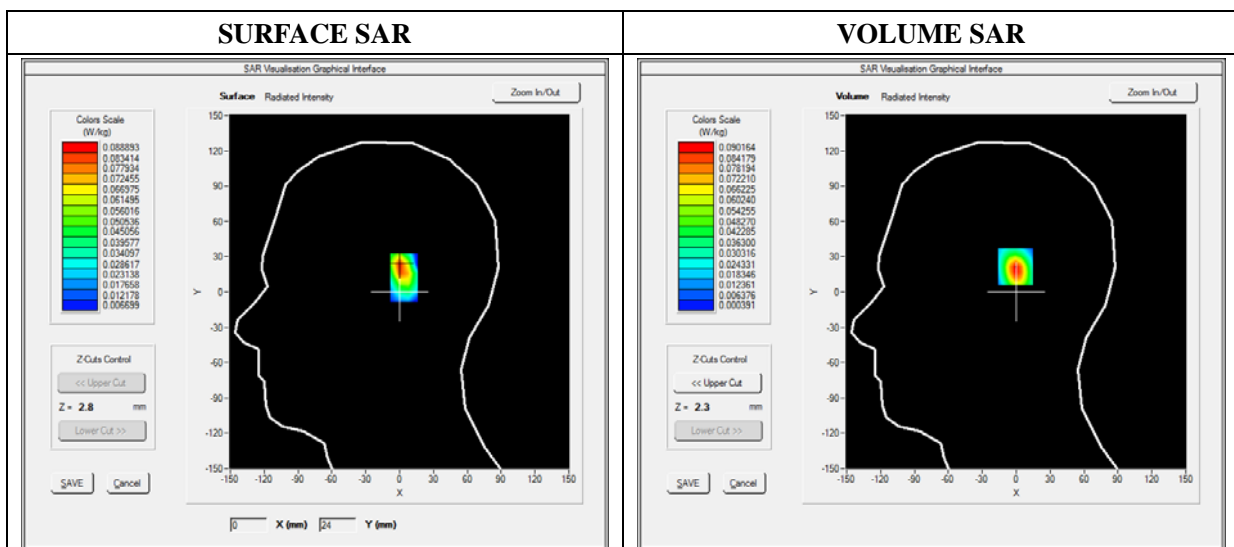
E-field Probe: SSE5 - SN 09/13 EP168; ConvF: 5.51; Calibrated: 2013/03/21

A. Experimental conditions

Area Scan	sam_direct_droit2_surf8mm.txt
Phantom	Left head
Device Position	Cheek
Band	WiFi_802.11b
Channels	High
Signal	Duty Cycle: 1.00 (Crest factor: 1.00)

B. SAR Measurement Results

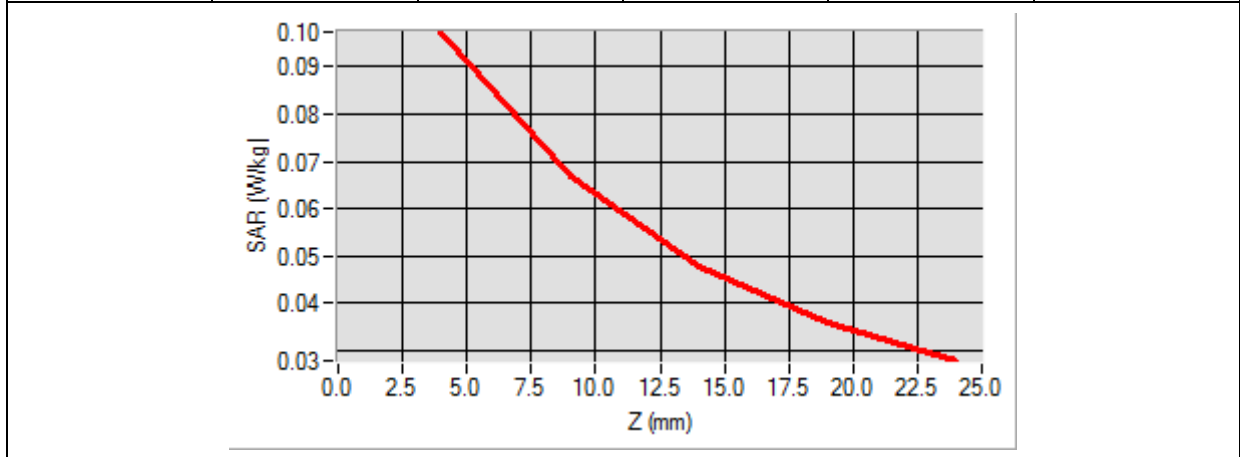
Frequency (MHz)	2472.000000
Relative Permittivity (real part)	38.762140
Conductivity (S/m)	1.781240
Power Variation (%)	1.144120
Ambient Temperature	21.1
Liquid Temperature	21.2



Maximum location: X=1.00, Y=22.00

SAR 10g (W/Kg)	0.060204
SAR 1g (W/Kg)	0.073029

Z (mm)	0.00	4.00	9.00	14.00	19.00
SAR (W/Kg)	0.0000	0.0973	0.0670	0.0479	0.0361



<p>3D screen shot</p>	<p>Hot spot position</p>

MEASUREMENT 46

Type: Phone measurement (Complete)

Date of measurement: 06/03/2014

Measurement duration: 12 minutes 3 seconds

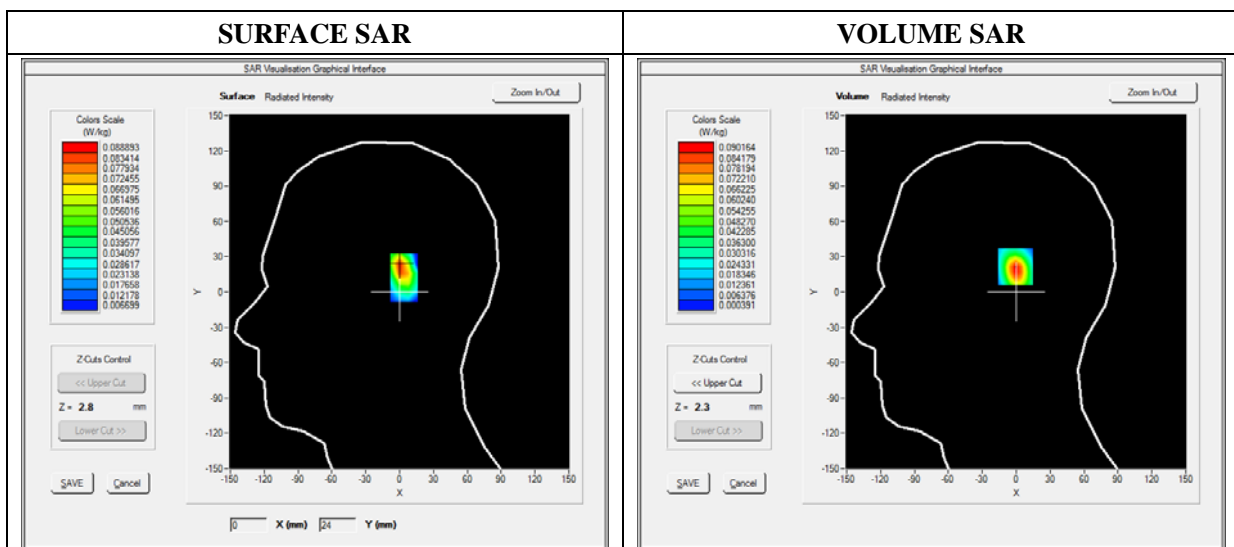
E-field Probe: SSE5 - SN 09/13 EP168; ConvF: 5.51; Calibrated: 2013/03/21

A. Experimental conditions

Area Scan	sam_direct_droit2_surf8mm.txt
Phantom	Left head
Device Position	Tilt
Band	WiFi_802.11b
Channels	High
Signal	Duty Cycle: 1.00 (Crest factor: 1.00)

B. SAR Measurement Results

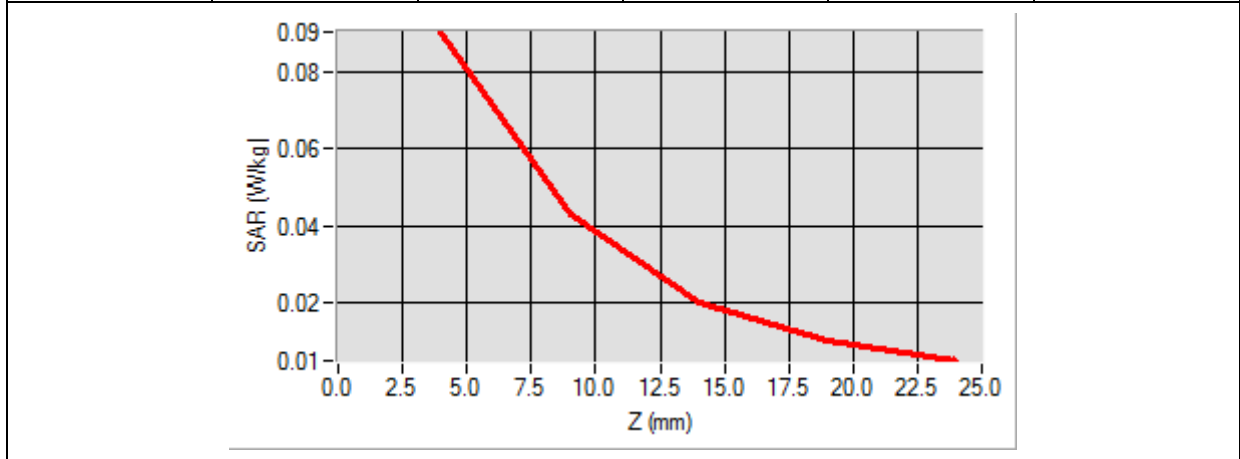
Frequency (MHz)	2472.000000
Relative Permittivity (real part)	38.762140
Conductivity (S/m)	1.781240
Power Variation (%)	1.144120
Ambient Temperature	21.1
Liquid Temperature	21.2



Maximum location: X=1.00, Y=22.00

SAR 10g (W/Kg)	0.031254
SAR 1g (W/Kg)	0.072710

Z (mm)	0.00	4.00	9.00	14.00	19.00
SAR (W/Kg)	0.0000	0.0901	0.0414	0.0186	0.0100



3D screen shot	Hot spot position

MEASUREMENT 47

Type: Phone measurement (Complete)

Date of measurement: 06/03/2014

Measurement duration: 12 minutes 3 seconds

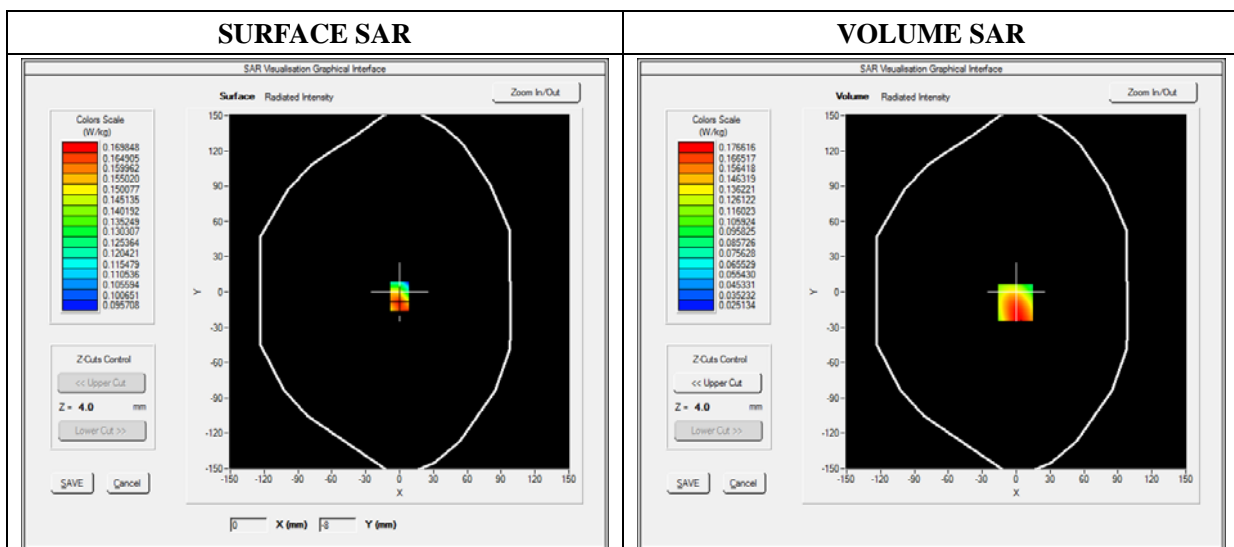
E-field Probe: SSE5 - SN 09/13 EP168; ConvF: 5.70; Calibrated: 03/21/2014

A. Experimental conditions

Area Scan	sam_direct_droit2_surf8mm.txt
Phantom	Flat Plane
Device Position	Back
Band	WiFi_802.11b
Channels	High
Signal	Duty Cycle: 1.00 (Crest factor: 1.00)

B. SAR Measurement Results

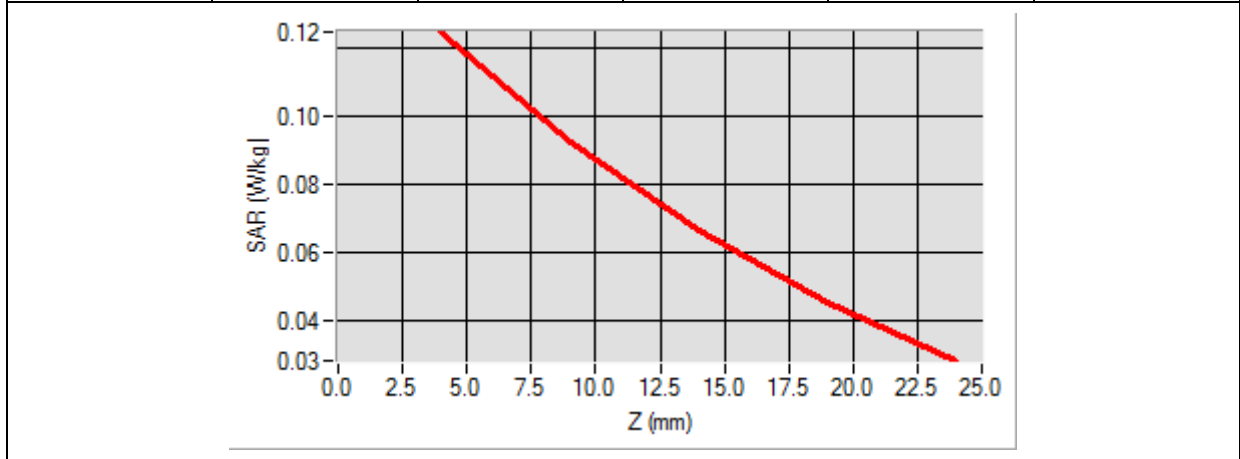
Frequency (MHz)	2472.000000
Relative Permittivity (real part)	51.082401
Conductivity (S/m)	1.910245
Power Variation (%)	0.542660
Ambient Temperature	21.1
Liquid Temperature	21.2



Maximum location: X=-1.00, Y=-9.00

SAR 10g (W/Kg)	0.055752
SAR 1g (W/Kg)	0.080556

Z (mm)	0.00	4.00	9.00	14.00	19.00
SAR (W/Kg)	0.0000	0.1249	0.0926	0.0661	0.0448



3D screen shot	Hot spot position

MEASUREMENT 48

Type: Phone measurement (Complete)

Date of measurement: 06/03/2014

Measurement duration: 12 minutes 3 seconds

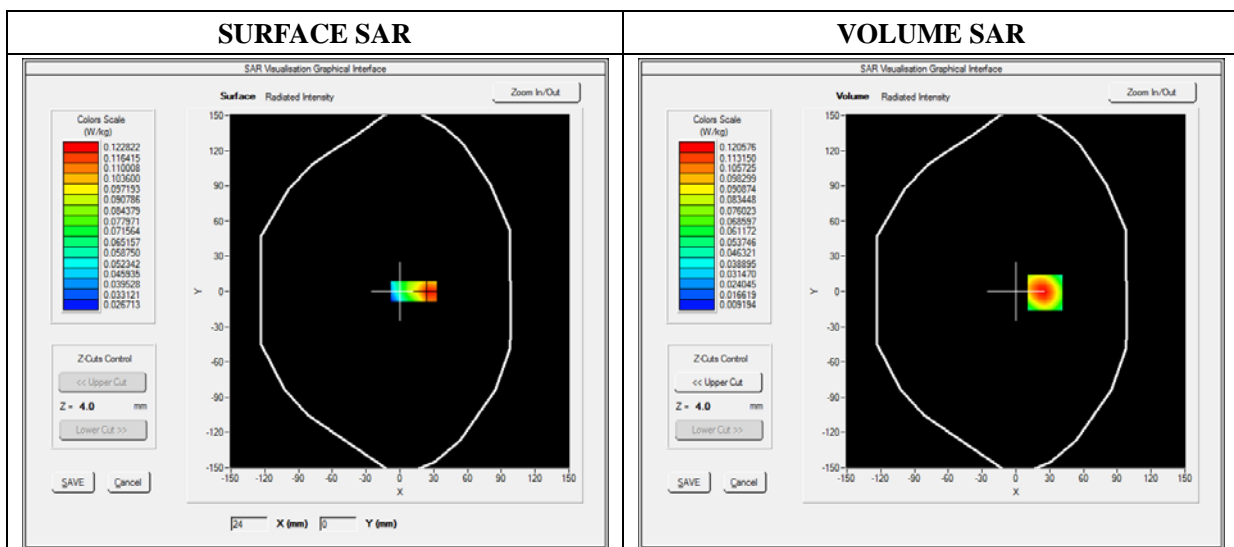
E-field Probe: SSE5 - SN 09/13 EP168; ConvF: 5.70; Calibrated: 03/21/2014

A. Experimental conditions

Area Scan	sam_direct_droit2_surf8mm.txt
Phantom	Flat Plane
Device Position	Top Side
Band	WiFi_802.11b
Channels	High
Signal	Duty Cycle: 1.00 (Crest factor: 1.00)

B. SAR Measurement Results

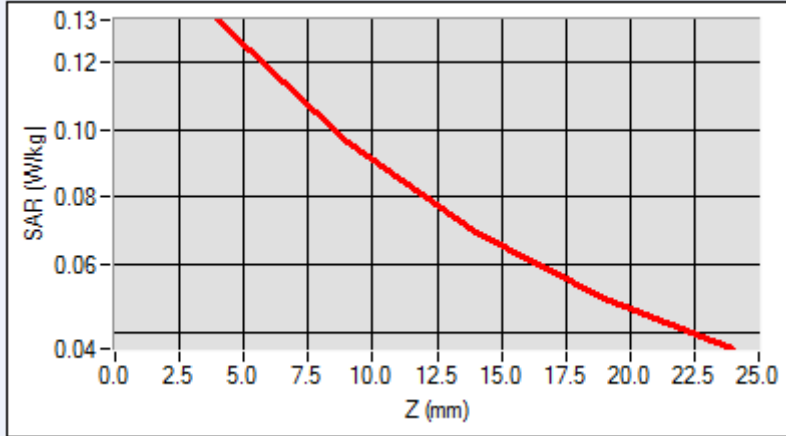
Frequency (MHz)	2472.000000
Relative Permittivity (real part)	51.082401
Conductivity (S/m)	1.910245
Power Variation (%)	0.542660
Ambient Temperature	21.1
Liquid Temperature	21.2



Maximum location: X=-56.00, Y=-32.00

SAR 10g (W/Kg)	0.056982
SAR 1g (W/Kg)	0.071255

Z (mm)	0.00	4.00	9.00	14.00	19.00
SAR (W/Kg)	0.0000	0.1224	0.0962	0.0697	0.0502



3D screen shot	Hot spot position

MEASUREMENT 49

Type: Phone measurement (Complete)

Date of measurement: 06/03/2014

Measurement duration: 12 minutes 3 seconds

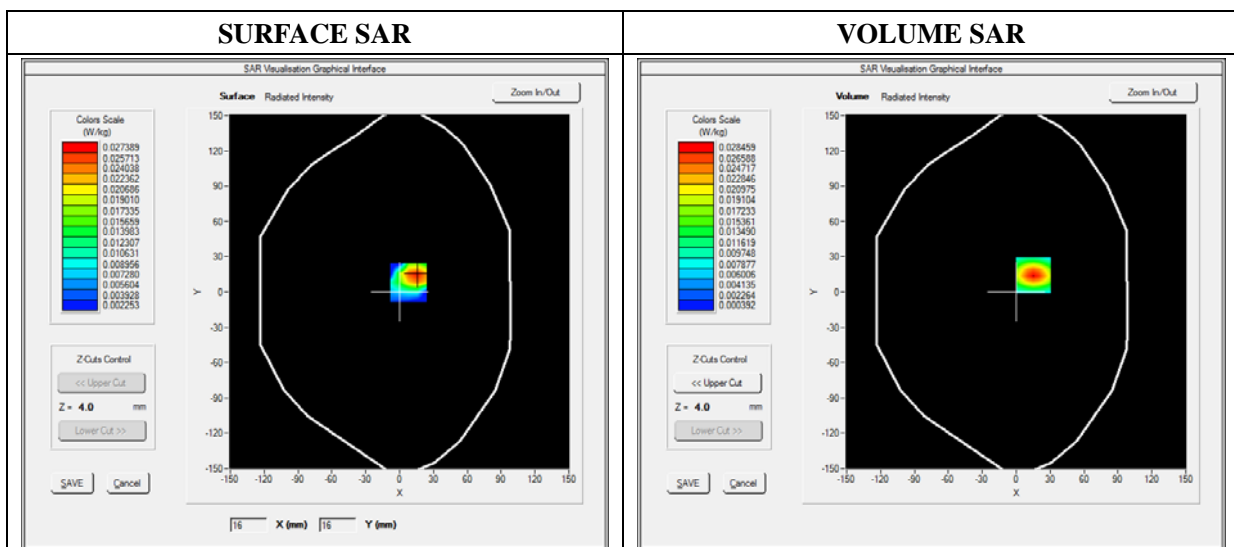
E-field Probe: SSE5 - SN 09/13 EP168; ConvF: 5.70; Calibrated: 03/21/2014

A. Experimental conditions

Area Scan	sam_direct_droit2_surf8mm.txt
Phantom	Flat Plane
Device Position	Right Side
Band	WiFi_802.11b
Channels	High
Signal	Duty Cycle: 1.00 (Crest factor: 1.00)

B. SAR Measurement Results

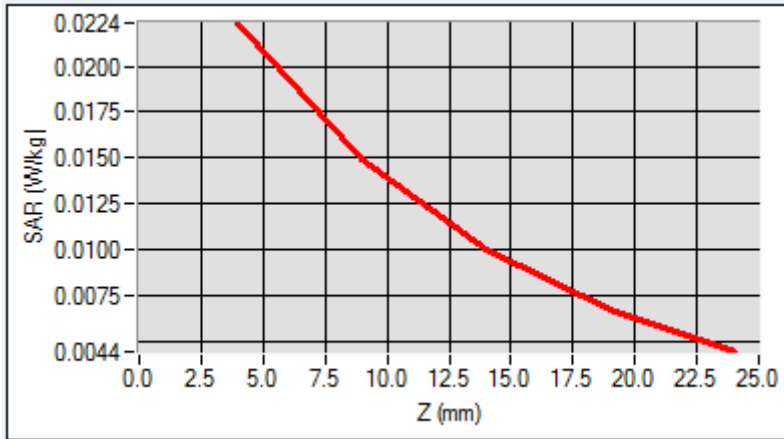
Frequency (MHz)	2472.000000
Relative Permittivity (real part)	51.082401
Conductivity (S/m)	1.910245
Power Variation (%)	0.542660
Ambient Temperature	21.1
Liquid Temperature	21.2



Maximum location: X=15.00, Y=14.00

SAR 10g (W/Kg)	0.013582
SAR 1g (W/Kg)	0.021280

Z (mm)	0.00	4.00	9.00	14.00	19.00
SAR (W/Kg)	0.0000	0.0224	0.0149	0.0100	0.0067



<p>3D screen shot</p>	<p>Hot spot position</p>

MEASUREMENT 50

Type: Phone measurement (Complete)

Date of measurement: 06/03/2014

Measurement duration: 12 minutes 3 seconds

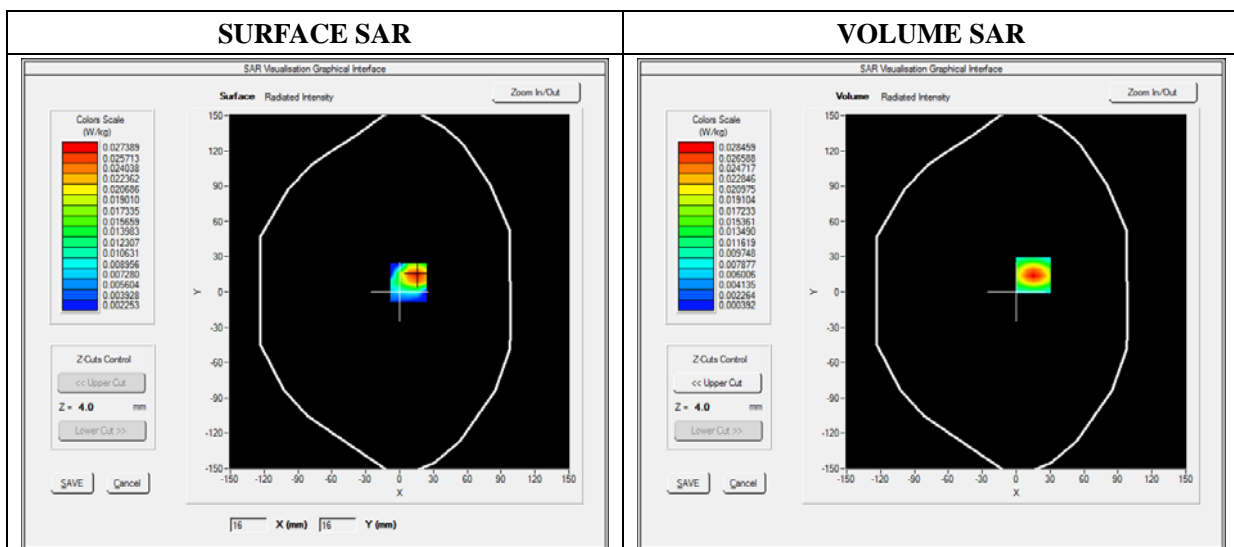
E-field Probe: SSE5 - SN 09/13 EP168; ConvF: 5.70; Calibrated: 03/21/2014

A. Experimental conditions

Area Scan	sam_direct_droit2_surf8mm.txt
Phantom	Flat Plane
Device Position	Left Side
Band	WiFi_802.11b
Channels	High
Signal	Duty Cycle: 1.00 (Crest factor: 1.00)

B. SAR Measurement Results

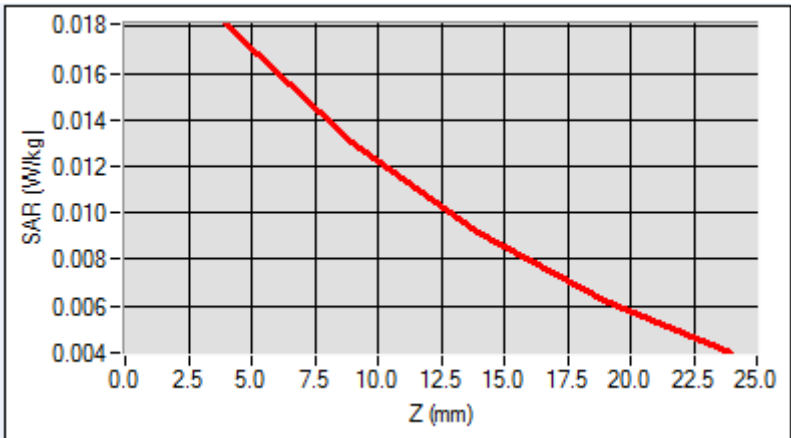
Frequency (MHz)	2472.000000
Relative Permittivity (real part)	51.082401
Conductivity (S/m)	1.910245
Power Variation (%)	0.542660
Ambient Temperature	21.1
Liquid Temperature	21.2



Maximum location: X=15.00, Y=14.00

SAR 10g (W/Kg)	0.011245
SAR 1g (W/Kg)	0.017106

Z (mm)	0.00	4.00	9.00	14.00	19.00
SAR (W/Kg)	0.0000	0.0181	0.0130	0.0092	0.0062



<p>3D screen shot</p>	<p>Hot spot position</p>

MEASUREMENT 51

Type: Phone measurement (Complete)

Date of measurement: 06/03/2014

Measurement duration: 12 minutes 3 seconds

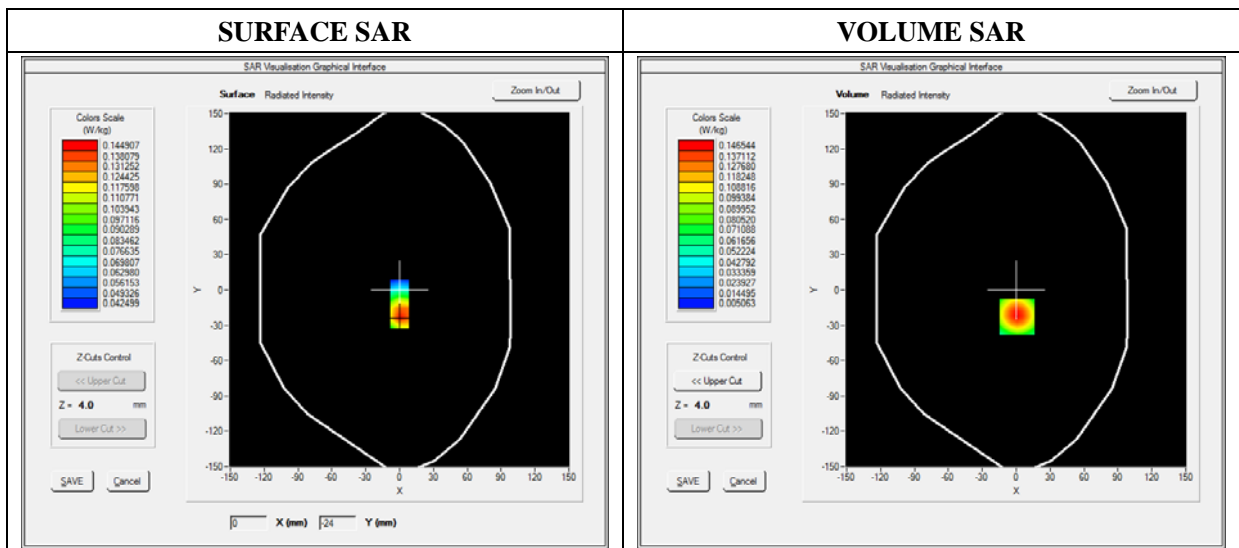
E-field Probe: SSE5 - SN 09/13 EP168; ConvF: 5.70; Calibrated: 03/21/2014

A. Experimental conditions

Area Scan	sam_direct_droit2_surf8mm.txt
Phantom	Flat Plane
Device Position	Back(Body with headset)
Band	WiFi_802.11b
Channels	High
Signal	Duty Cycle: 1.00 (Crest factor: 1.00)

B. SAR Measurement Results

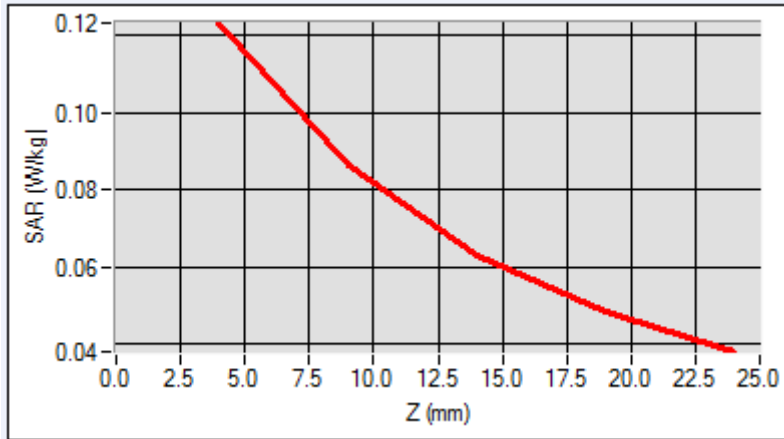
Frequency (MHz)	2472.000000
Relative Permittivity (real part)	51.082401
Conductivity (S/m)	1.910245
Power Variation (%)	0.542660
Ambient Temperature	21.1
Liquid Temperature	21.2



Maximum location: X=1.00, Y=-23.00

SAR 10g (W/Kg)	0.082928
SAR 1g (W/Kg)	0.118113

Z (mm)	0.00	4.00	9.00	14.00	19.00
SAR (W/Kg)	0.0000	0.1232	0.0865	0.0631	0.0485



3D screen shot	Hot spot position

MEASUREMENT 52

Type: Phone measurement (Complete)

Date of measurement: 06/03/2014

Measurement duration: 12 minutes 3 seconds

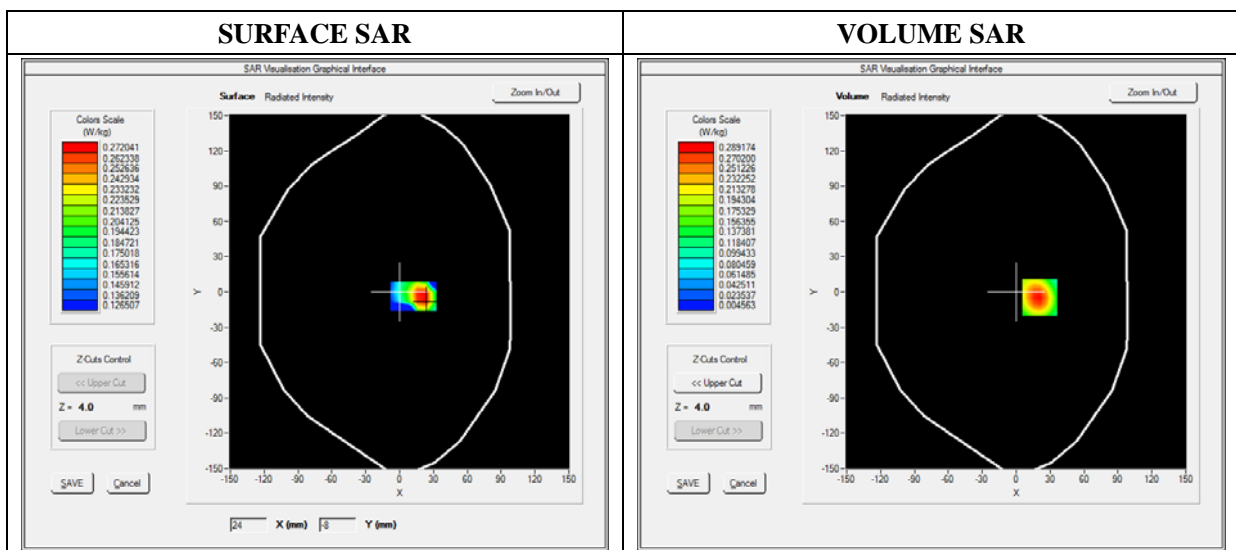
E-field Probe: SSE5 - SN 09/13 EP168; ConvF: 5.70; Calibrated: 03/21/2014

A. Experimental conditions

Area Scan	sam_direct_droit2_surf8mm.txt
Phantom	Flat Plane
Device Position	Front(Body with headset)
Band	WiFi_802.11b
Channels	High
Signal	Duty Cycle: 1.00 (Crest factor: 1.00)

B. SAR Measurement Results

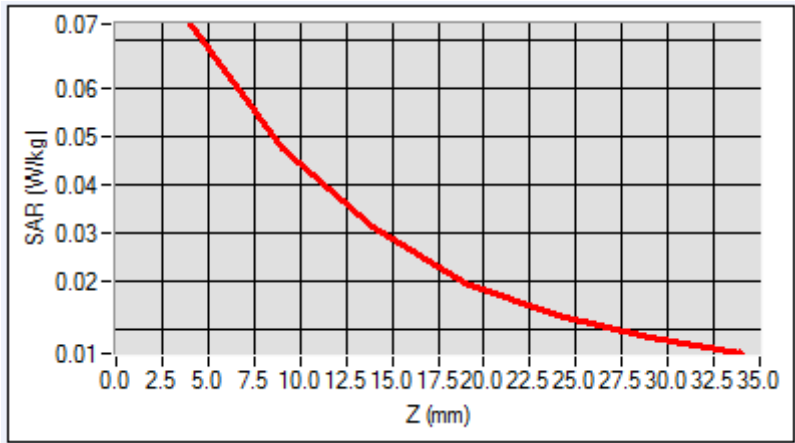
Frequency (MHz)	2472.000000
Relative Permittivity (real part)	51.082401
Conductivity (S/m)	1.910245
Power Variation (%)	0.542660
Ambient Temperature	21.1
Liquid Temperature	21.2



Maximum location: X=15.00, Y=14.00

SAR 10g (W/Kg)	0.034888
SAR 1g (W/Kg)	0.060548

Z (mm)	0.00	4.00	9.00	14.00	19.00
SAR (W/Kg)	0.0000	0.0712	0.0473	0.0312	0.0196



3D screen shot	Hot spot position

MEASUREMENT 53

Type: Phone measurement (Complete)

Date of measurement: 06/03/2014

Measurement duration: 12 minutes 3 seconds

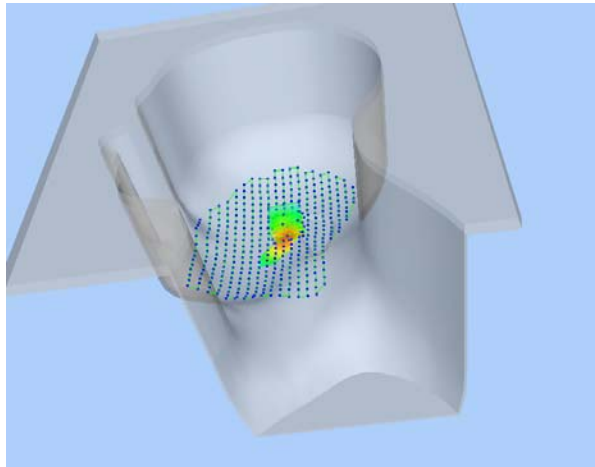

E-field Probe: SSE5 - SN 09/13 EP168; ConvF: 5.51; Calibrated: 2013/03/21

A. Experimental conditions

Area Scan	sam_direct_droit2_surf8mm.txt
Phantom	Right head
Device Position	Cheek
Band	WiFi_802.11n-HT20
Channels	High
Signal	Duty Cycle: 1.00 (Crest factor: 1.00)

B. SAR Measurement Results

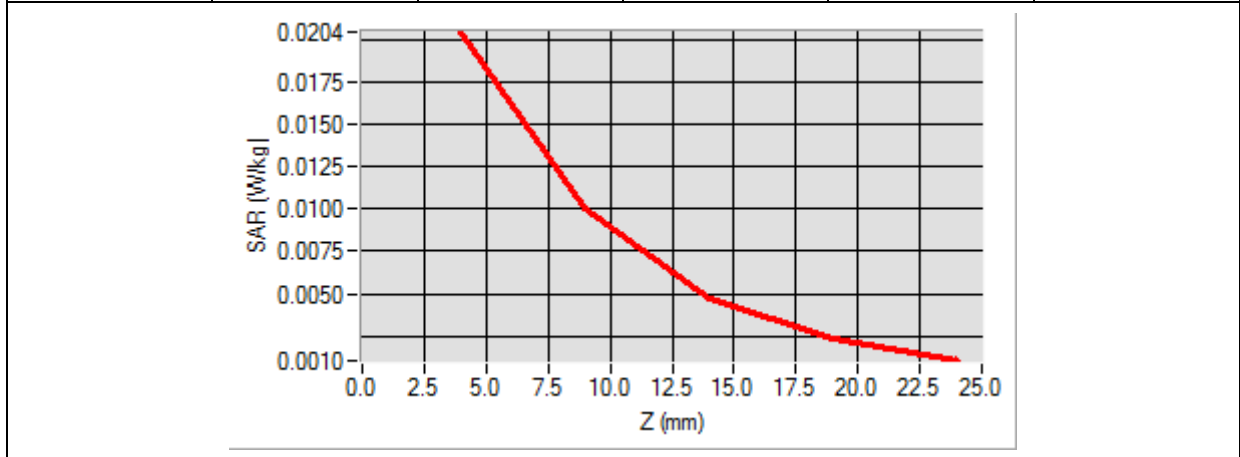
Frequency (MHz)	2472.000000
Relative Permittivity (real part)	38.762140
Conductivity (S/m)	1.781240
Power Variation (%)	1.144120
Ambient Temperature	21.1
Liquid Temperature	21.2

3D screen shot	Hot spot position
	

Maximum location: X=1.00, Y=17.00

SAR 10g (W/Kg)	0.008954
SAR 1g (W/Kg)	0.018600

Z (mm)	0.00	4.00	9.00	14.00	19.00
SAR (W/Kg)	0.0000	0.0204	0.0100	0.0048	0.0023



3D screen shot	Hot spot position

MEASUREMENT 54

Type: Phone measurement (Complete)

Date of measurement: 06/03/2014

Measurement duration: 12 minutes 3 seconds

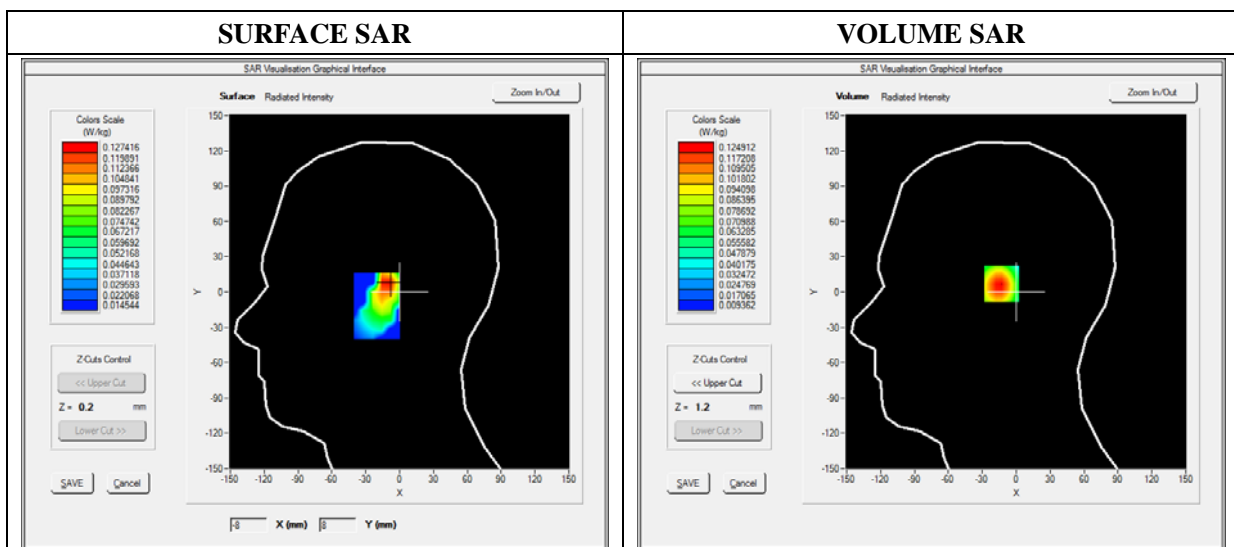
E-field Probe: SSE5 - SN 09/13 EP168; ConvF: 5.51; Calibrated: 2013/03/21

A. Experimental conditions

Area Scan	sam_direct_droit2_surf8mm.txt
Phantom	Right head
Device Position	Tilt
Band	WiFi_802.11n-HT20
Channels	High
Signal	Duty Cycle: 1.00 (Crest factor: 1.00)

B. SAR Measurement Results

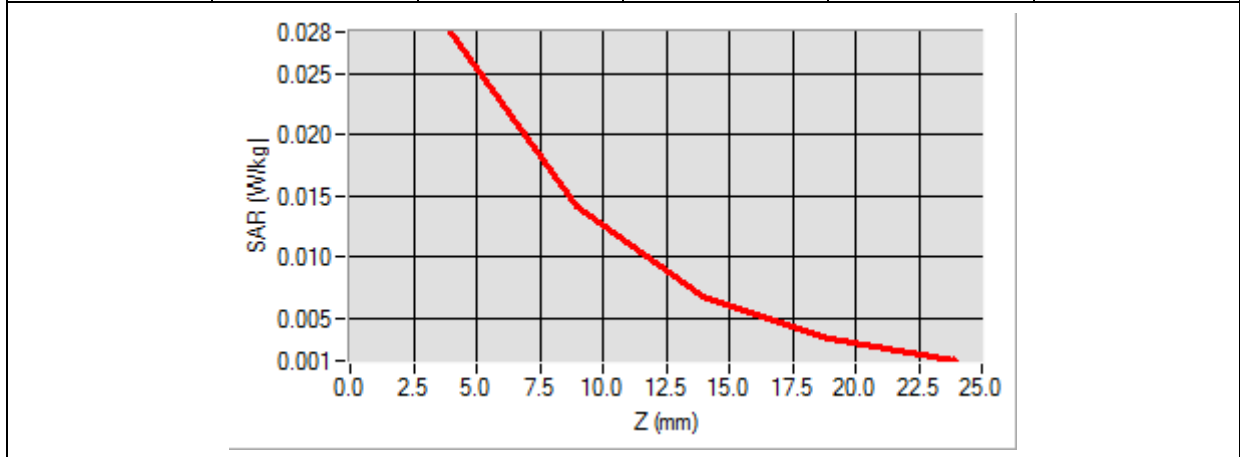
Frequency (MHz)	2472.000000
Relative Permittivity (real part)	38.762140
Conductivity (S/m)	1.781240
Power Variation (%)	1.144120
Ambient Temperature	21.1
Liquid Temperature	21.2



Maximum location: X=15.00, Y=14.00

SAR 10g (W/Kg)	0.012440
SAR 1g (W/Kg)	0.025811

Z (mm)	0.00	4.00	9.00	14.00	19.00
SAR (W/Kg)	0.0000	0.0285	0.0141	0.0068	0.0033



3D screen shot	Hot spot position

MEASUREMENT 55

Type: Phone measurement (Complete)

Date of measurement: 06/03/2014

Measurement duration: 12 minutes 3 seconds

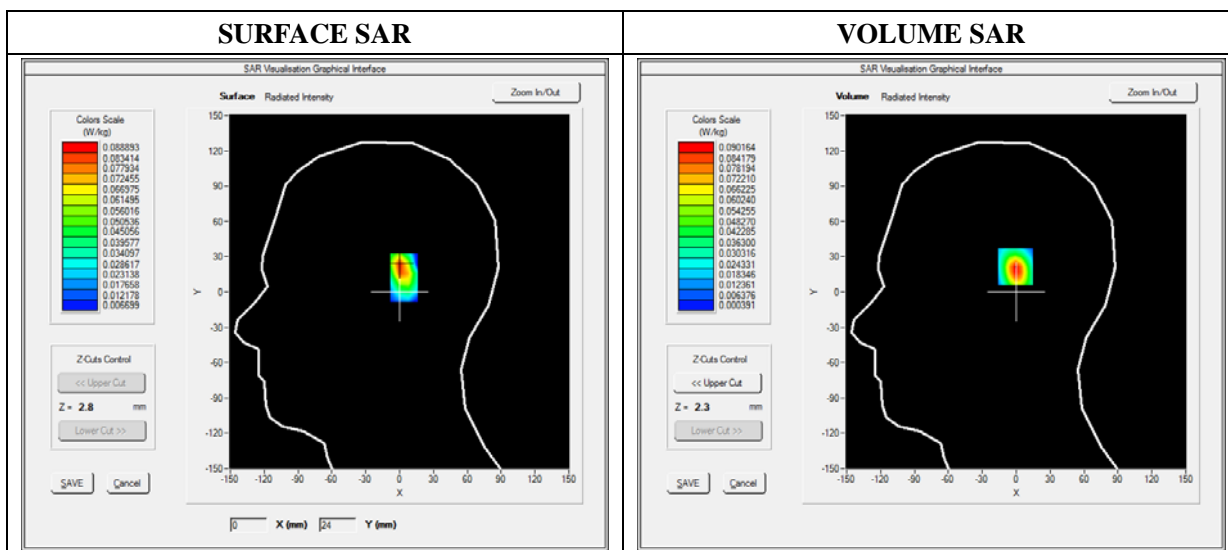
E-field Probe: SSE5 - SN 09/13 EP168; ConvF: 5.51; Calibrated: 2013/03/21

A. Experimental conditions

Area Scan	sam_direct_droit2_surf8mm.txt
Phantom	Left head
Device Position	Cheek
Band	WiFi_802.11n-HT20
Channels	High
Signal	Duty Cycle: 1.00 (Crest factor: 1.00)

B. SAR Measurement Results

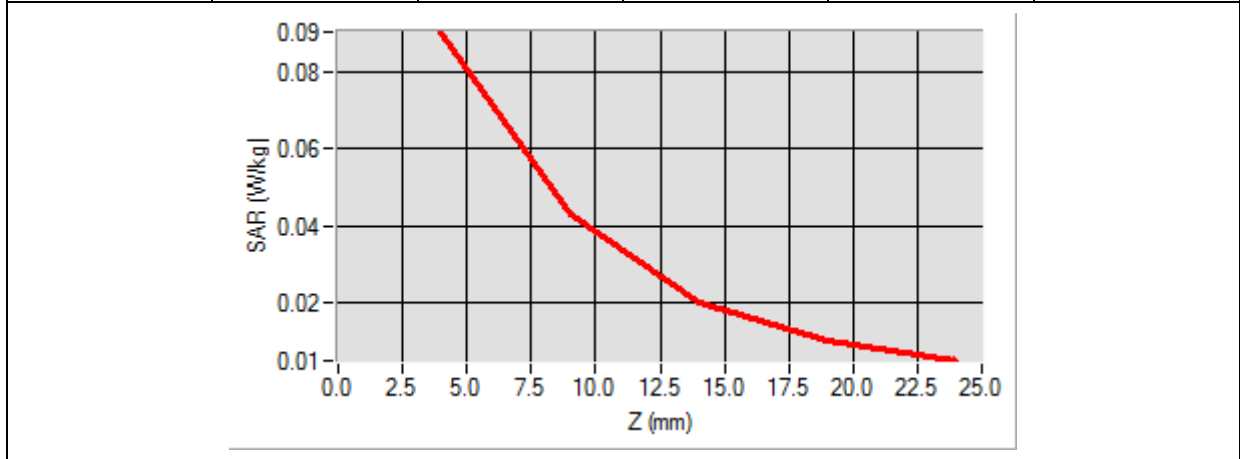
Frequency (MHz)	2472.000000
Relative Permittivity (real part)	38.762140
Conductivity (S/m)	1.781240
Power Variation (%)	1.144120
Ambient Temperature	21.1
Liquid Temperature	21.2



Maximum location: X=1.00, Y=22.00

SAR 10g (W/Kg)	0.037486
SAR 1g (W/Kg)	0.081975

Z (mm)	0.00	4.00	9.00	14.00	19.00
SAR (W/Kg)	0.0000	0.0902	0.0430	0.0202	0.0101



<p>3D screen shot</p>	<p>Hot spot position</p>

MEASUREMENT 56

Type: Phone measurement (Complete)

Date of measurement: 06/03/2014

Measurement duration: 12 minutes 3 seconds

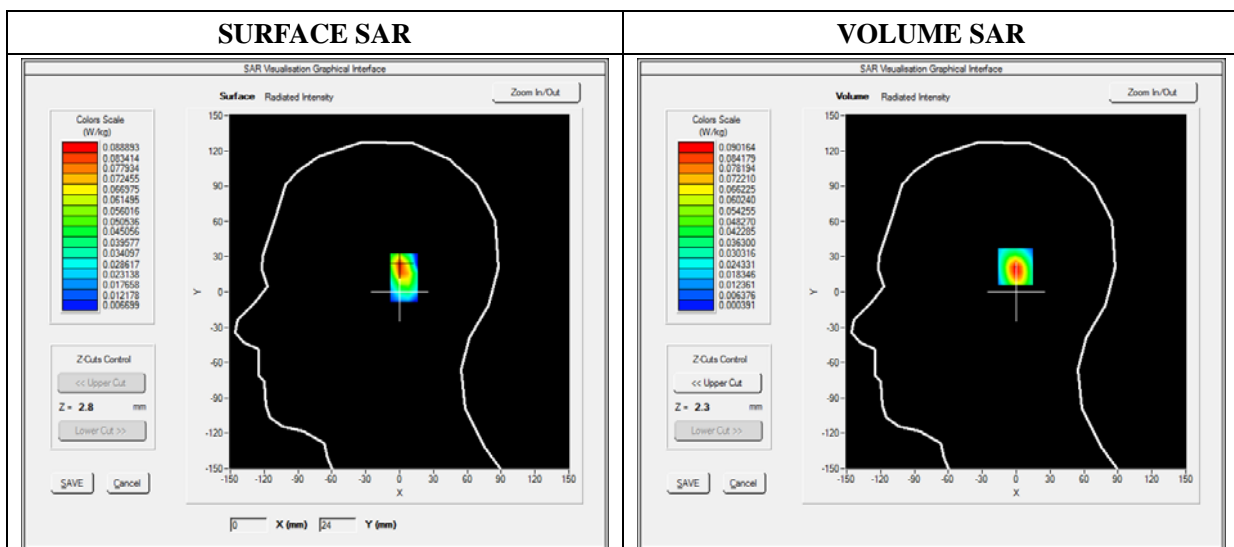
E-field Probe: SSE5 - SN 09/13 EP168; ConvF: 5.51; Calibrated: 2013/03/21

A. Experimental conditions

Area Scan	sam_direct_droit2_surf8mm.txt
Phantom	Left head
Device Position	Tilt
Band	WiFi_802.11n-HT20
Channels	High
Signal	Duty Cycle: 1.00 (Crest factor: 1.00)

B. SAR Measurement Results

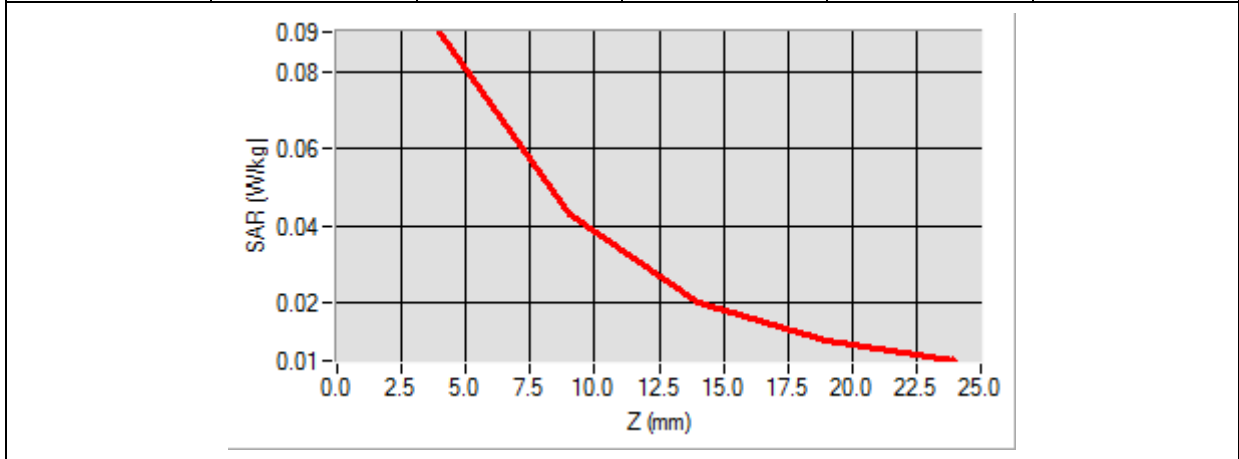
Frequency (MHz)	2472.000000
Relative Permittivity (real part)	38.762140
Conductivity (S/m)	1.781240
Power Variation (%)	1.144120
Ambient Temperature	21.1
Liquid Temperature	21.2



Maximum location: X=1.00, Y=22.00

SAR 10g (W/Kg)	0.034282
SAR 1g (W/Kg)	0.074120

Z (mm)	0.00	4.00	9.00	14.00	19.00
SAR (W/Kg)	0.0000	0.0912	0.0452	0.0200	0.0100



<p>3D screen shot</p>	<p>Hot spot position</p>

MEASUREMENT 57

Type: Phone measurement (Complete)

Date of measurement: 06/03/2014

Measurement duration: 12 minutes 3 seconds

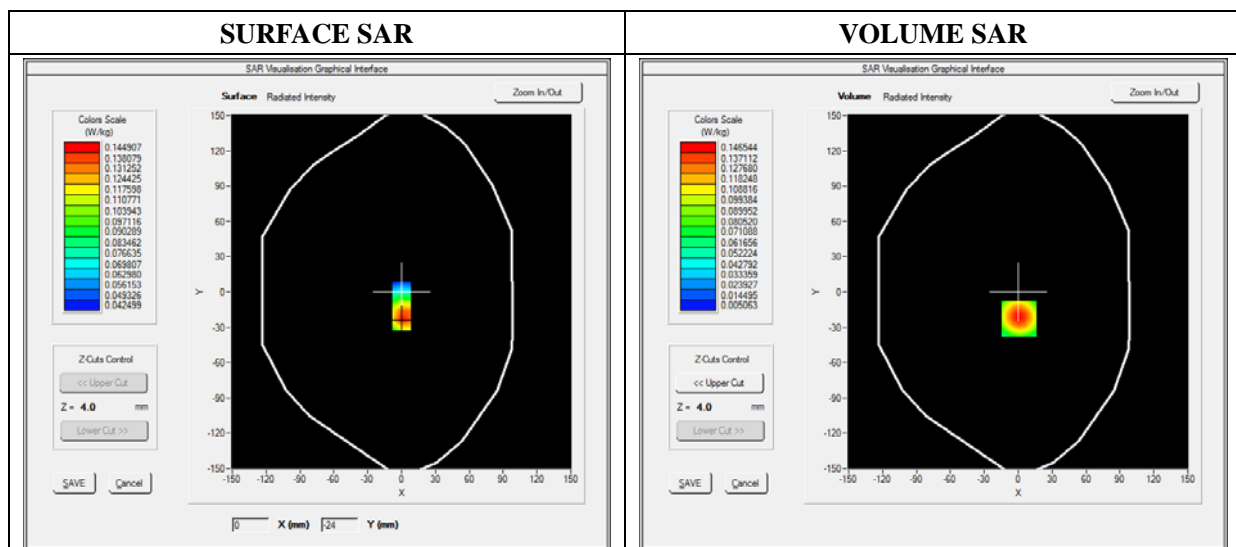
E-field Probe: SSE5 - SN 09/13 EP168; ConvF: 5.70; Calibrated: 03/21/2014

A. Experimental conditions

Area Scan	sam_direct_droit2_surf8mm.txt
Phantom	Flat Plane
Device Position	Back
Band	WiFi_802.11n-HT20
Channels	High
Signal	Duty Cycle: 1.00 (Crest factor: 1.00)

B. SAR Measurement Results

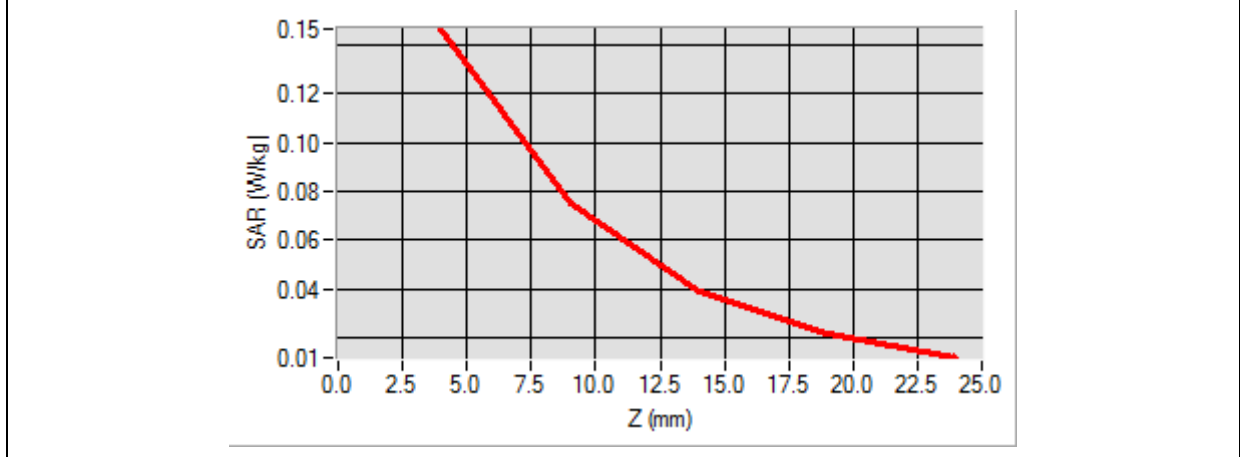
Frequency (MHz)	2472.000000
Relative Permittivity (real part)	51.082401
Conductivity (S/m)	1.910245
Power Variation (%)	0.542660
Ambient Temperature	21.1
Liquid Temperature	21.2



Maximum location: X=1.00, Y=-23.00

SAR 10g (W/Kg)	0.073009
SAR 1g (W/Kg)	0.137327

Z (mm)	0.00	4.00	9.00	14.00	19.00
SAR (W/Kg)	0.0000	0.1465	0.0752	0.0388	0.0214



3D screen shot	Hot spot position

MEASUREMENT 58

Type: Phone measurement (Complete)

Date of measurement: 06/03/2014

Measurement duration: 12 minutes 3 seconds

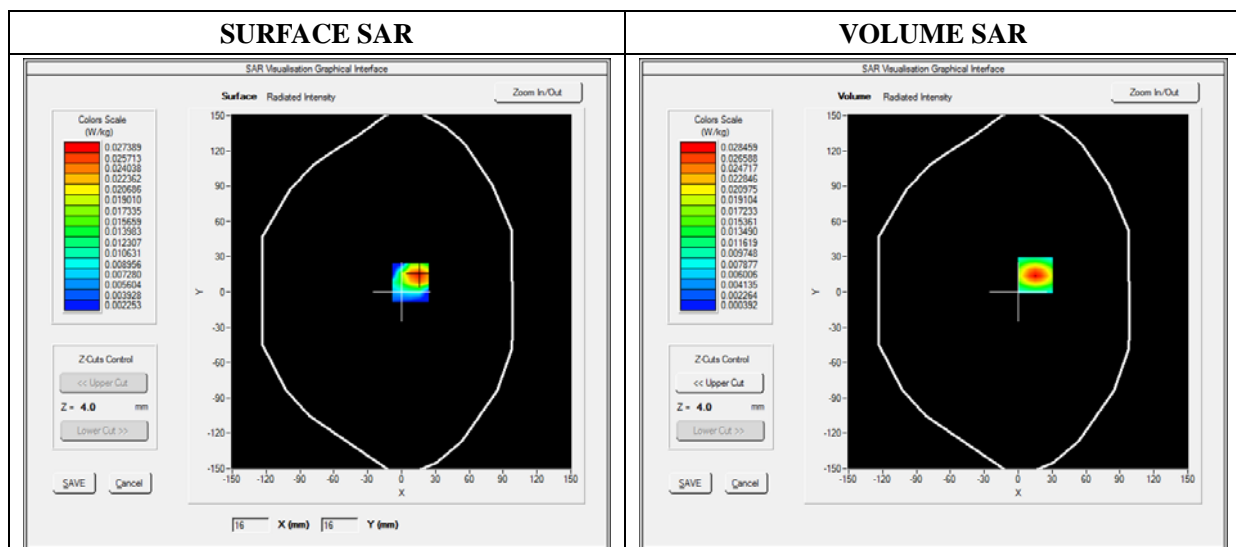
E-field Probe: SSE5 - SN 09/13 EP168; ConvF: 5.70; Calibrated: 03/21/2014

A. Experimental conditions

Area Scan	sam_direct_droit2_surf8mm.txt
Phantom	Flat Plane
Device Position	Top Side
Band	WiFi_802.11n-HT20
Channels	High
Signal	Duty Cycle: 1.00 (Crest factor: 1.00)

B. SAR Measurement Results

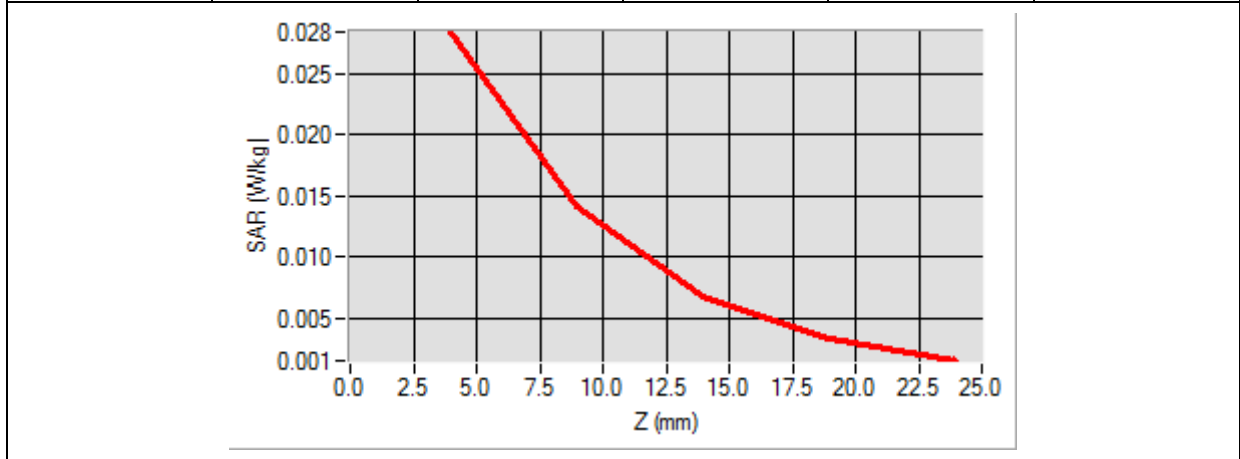
Frequency (MHz)	2472.000000
Relative Permittivity (real part)	51.082401
Conductivity (S/m)	1.910245
Power Variation (%)	0.542660
Ambient Temperature	21.1
Liquid Temperature	21.2



Maximum location: X=15.00, Y=14.00

SAR 10g (W/Kg)	0.009194
SAR 1g (W/Kg)	0.015691

Z (mm)	0.00	4.00	9.00	14.00	19.00
SAR (W/Kg)	0.0000	0.0175	0.0117	0.0058	0.0061



3D screen shot	Hot spot position

MEASUREMENT 59

Type: Phone measurement (Complete)

Date of measurement: 06/03/2014

Measurement duration: 12 minutes 3 seconds

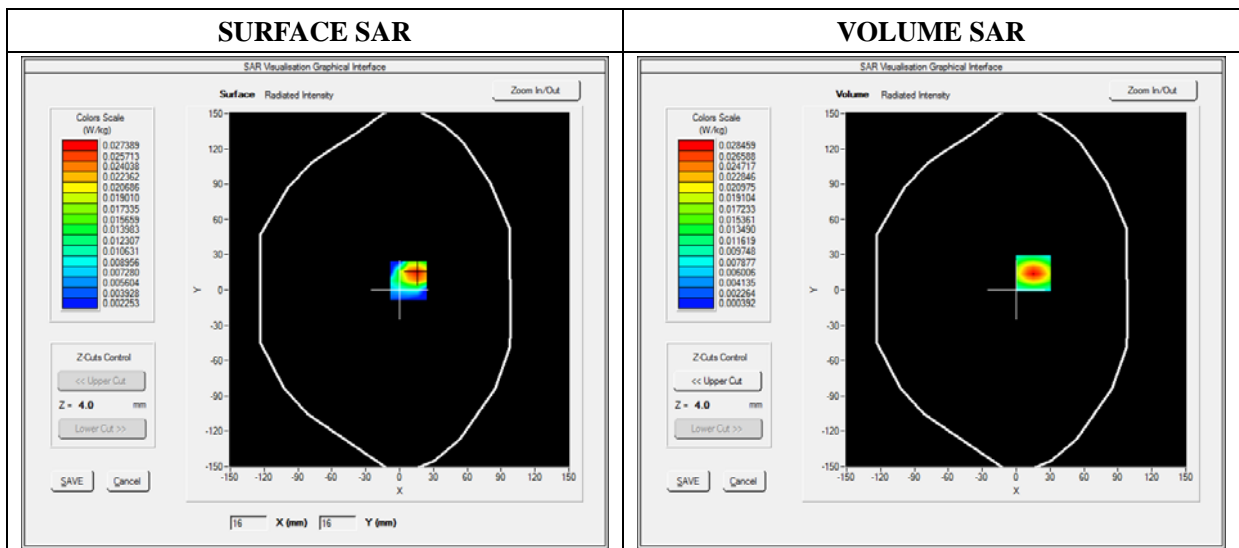
E-field Probe: SSE5 - SN 09/13 EP168; ConvF: 5.70; Calibrated: 03/21/2014

A. Experimental conditions

Area Scan	sam_direct_droit2_surf8mm.txt
Phantom	Flat Plane
Device Position	Right Side
Band	WiFi_802.11n-HT20
Channels	High
Signal	Duty Cycle: 1.00 (Crest factor: 1.00)

B. SAR Measurement Results

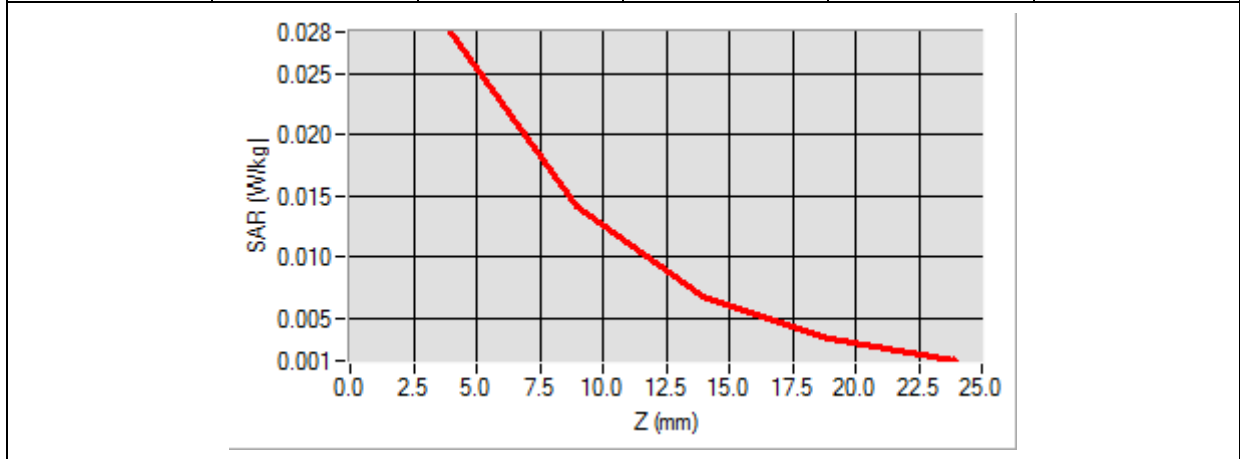
Frequency (MHz)	2472.000000
Relative Permittivity (real part)	51.082401
Conductivity (S/m)	1.910245
Power Variation (%)	0.542660
Ambient Temperature	21.1
Liquid Temperature	21.2



Maximum location: X=15.00, Y=14.00

SAR 10g (W/Kg)	0.011245
SAR 1g (W/Kg)	0.025488

Z (mm)	0.00	4.00	9.00	14.00	19.00
SAR (W/Kg)	0.0000	0.0291	0.0100	0.0046	0.0026



3D screen shot	Hot spot position

MEASUREMENT 60

Type: Phone measurement (Complete)

Date of measurement: 06/03/2014

Measurement duration: 12 minutes 3 seconds

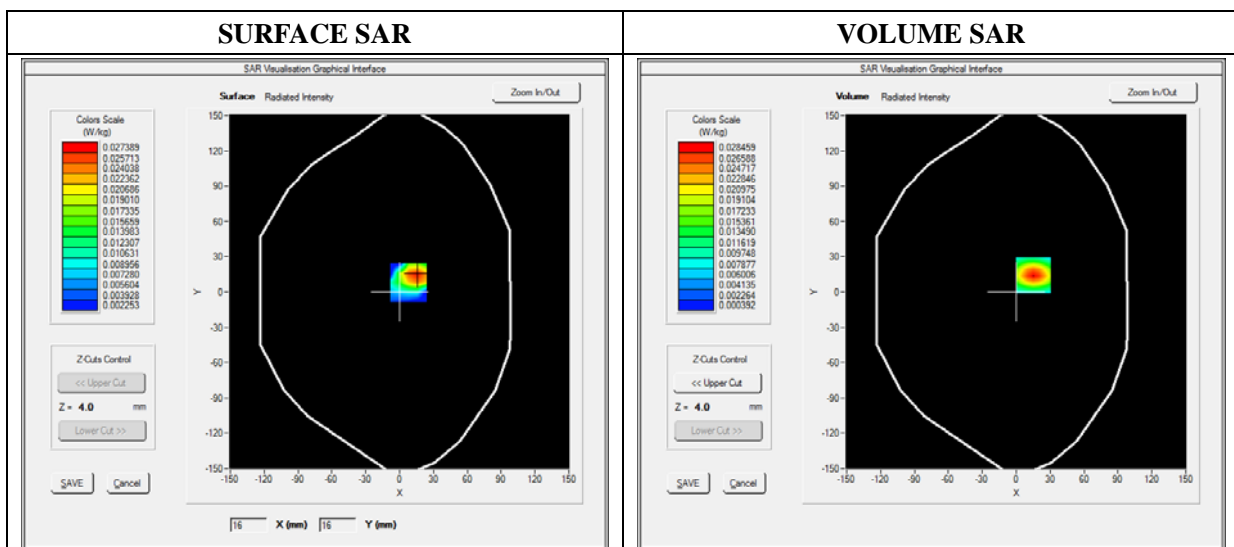
E-field Probe: SSE5 - SN 09/13 EP168; ConvF: 5.70; Calibrated: 03/21/2014

A. Experimental conditions

Area Scan	sam_direct_droit2_surf8mm.txt
Phantom	Flat Plane
Device Position	Left Side
Band	WiFi_802.11n-HT20
Channels	High
Signal	Duty Cycle: 1.00 (Crest factor: 1.00)

B. SAR Measurement Results

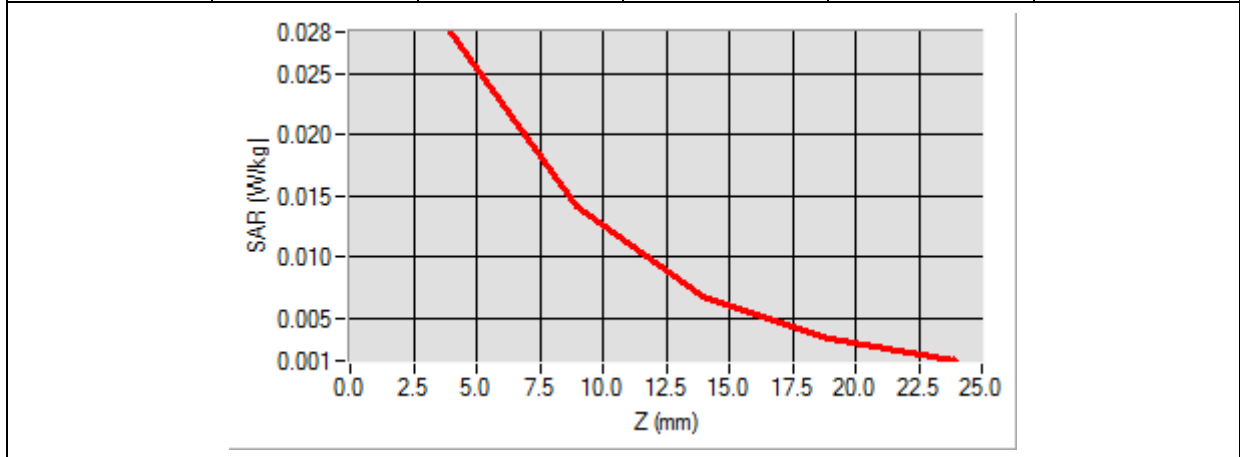
Frequency (MHz)	2472.000000
Relative Permittivity (real part)	51.082401
Conductivity (S/m)	1.910245
Power Variation (%)	0.542660
Ambient Temperature	21.1
Liquid Temperature	21.2



Maximum location: X=15.00, Y=14.00

SAR 10g (W/Kg)	0.011159
SAR 1g (W/Kg)	0.025047

Z (mm)	0.00	4.00	9.00	14.00	19.00
SAR (W/Kg)	0.0000	0.0285	0.0100	0.0044	0.0024



3D screen shot	Hot spot position

MEASUREMENT 61

Type: Phone measurement (Complete)

Date of measurement: 06/03/2014

Measurement duration: 12 minutes 3 seconds

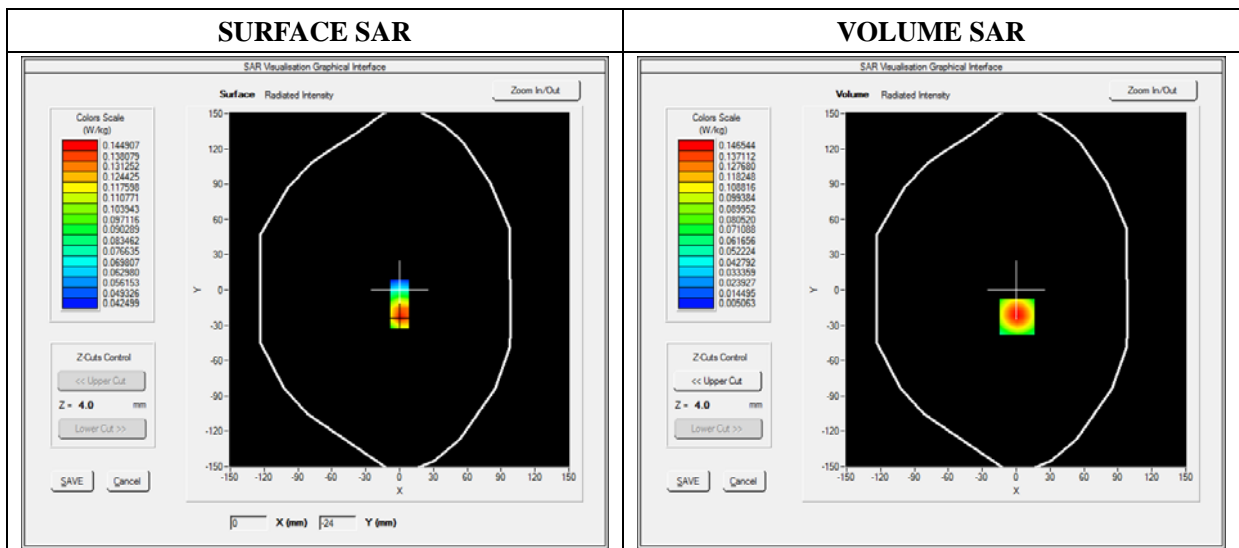
E-field Probe: SSE5 - SN 09/13 EP168; ConvF: 5.70; Calibrated: 03/21/2014

A. Experimental conditions

Area Scan	sam_direct_droit2_surf8mm.txt
Phantom	Flat Plane
Device Position	Back(Body with headset)
Band	WiFi_802.11n-HT20
Channels	High
Signal	Duty Cycle: 1.00 (Crest factor: 1.00)

B. SAR Measurement Results

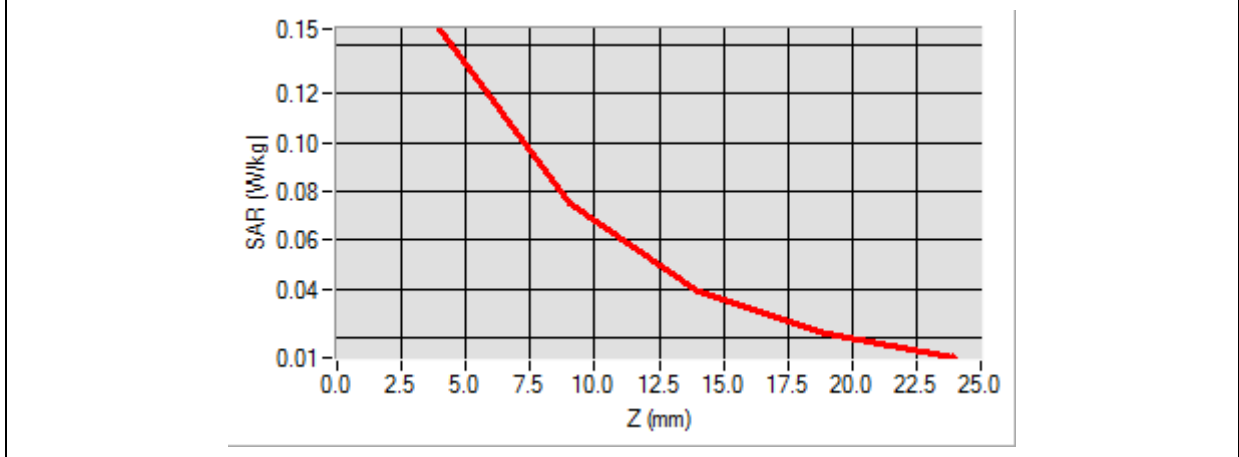
Frequency (MHz)	2472.000000
Relative Permittivity (real part)	51.082401
Conductivity (S/m)	1.910245
Power Variation (%)	0.542660
Ambient Temperature	21.1
Liquid Temperature	21.2



Maximum location: X=1.00, Y=-23.00

SAR 10g (W/Kg)	0.071140
SAR 1g (W/Kg)	0.136258

Z (mm)	0.00	4.00	9.00	14.00	19.00
SAR (W/Kg)	0.0000	0.1465	0.0752	0.0388	0.0214



3D screen shot	Hot spot position

MEASUREMENT 62

Type: Phone measurement (Complete)

Date of measurement: 06/03/2014

Measurement duration: 12 minutes 3 seconds

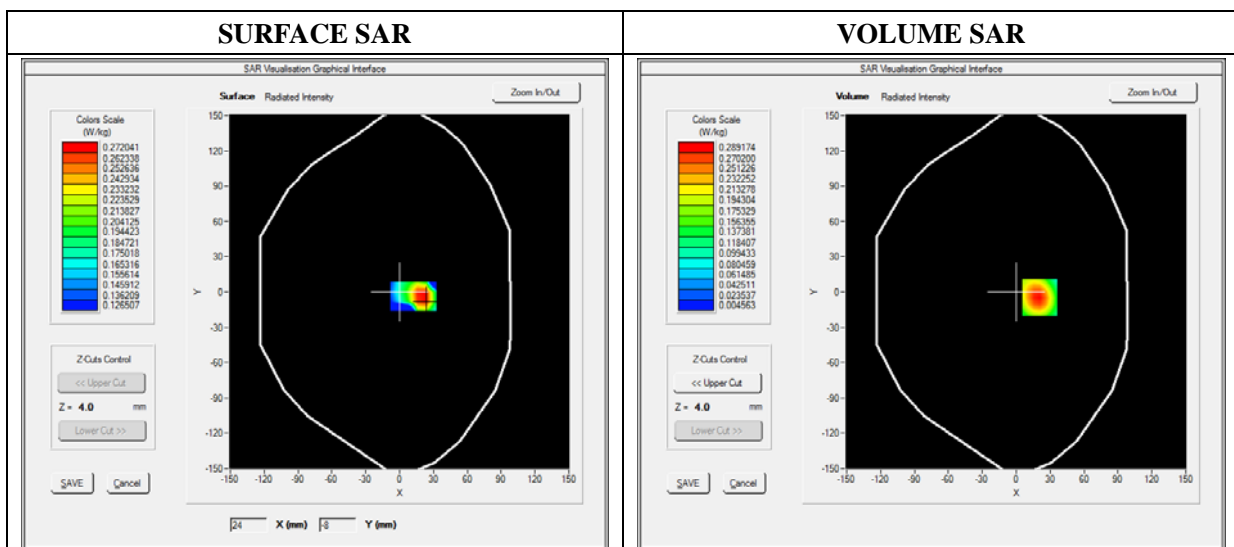
E-field Probe: SSE5 - SN 09/13 EP168; ConvF: 5.70; Calibrated: 03/21/2014

A. Experimental conditions

Area Scan	sam_direct_droit2_surf8mm.txt
Phantom	Flat Plane
Device Position	Front(Body with headset)
Band	WiFi_802.11n-HT20
Channels	High
Signal	Duty Cycle: 1.00 (Crest factor: 1.00)

B. SAR Measurement Results

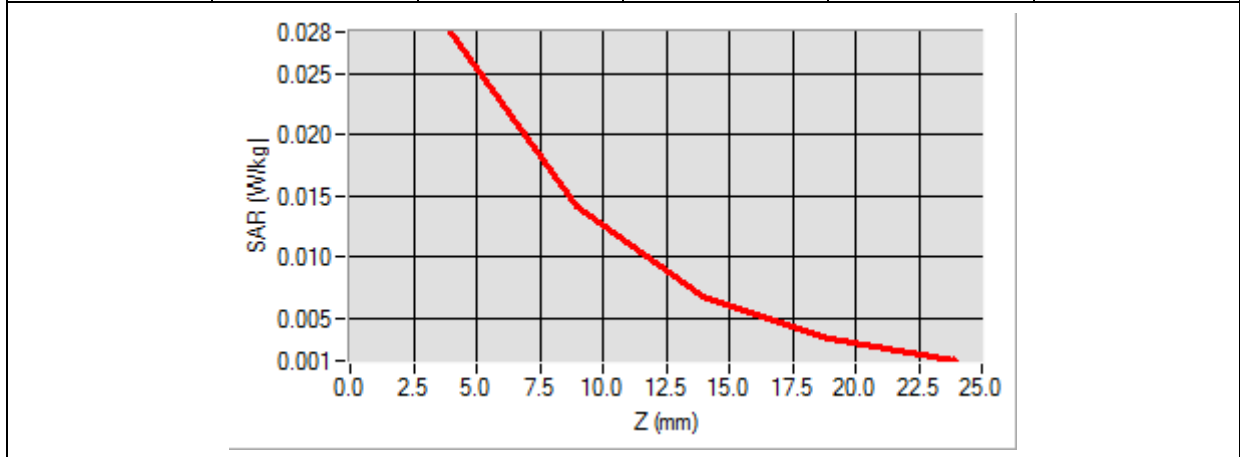
Frequency (MHz)	2472.000000
Relative Permittivity (real part)	51.082401
Conductivity (S/m)	1.910245
Power Variation (%)	0.542660
Ambient Temperature	21.1
Liquid Temperature	21.2



Maximum location: X=15.00, Y=14.00

SAR 10g (W/Kg)	0.014266
SAR 1g (W/Kg)	0.031251

Z (mm)	0.00	4.00	9.00	14.00	19.00
SAR (W/Kg)	0.0000	0.0352	0.0212	0.0101	0.0092



<p>3D screen shot</p>	<p>Hot spot position</p>

Annex C. EUT Photos

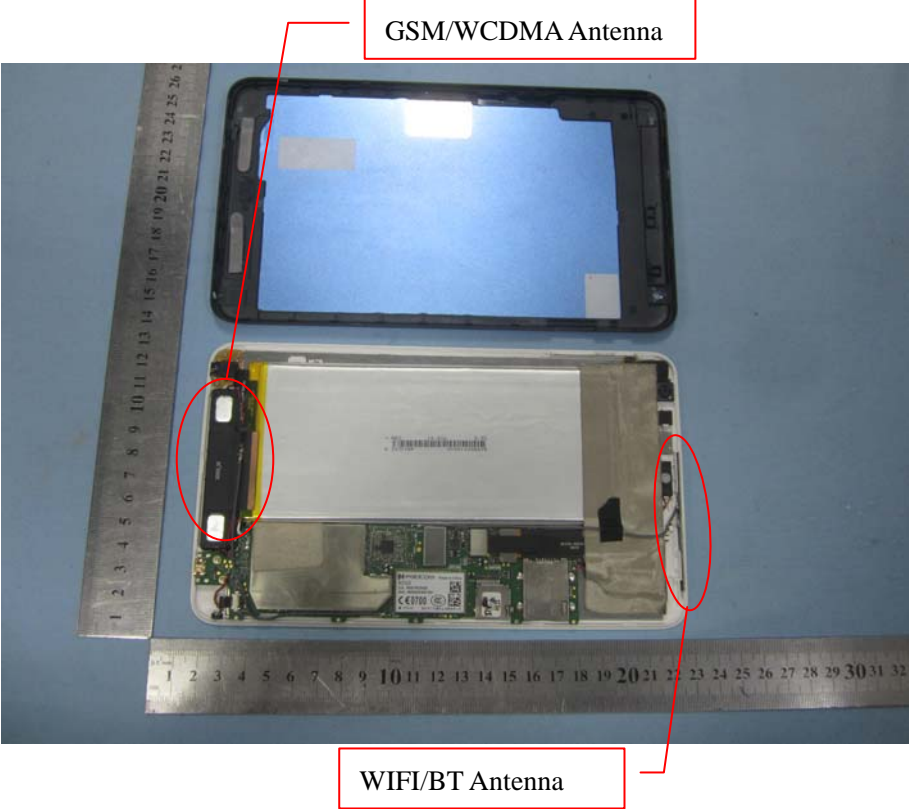
EUT View_Front



EUT View_Back



Antenna View



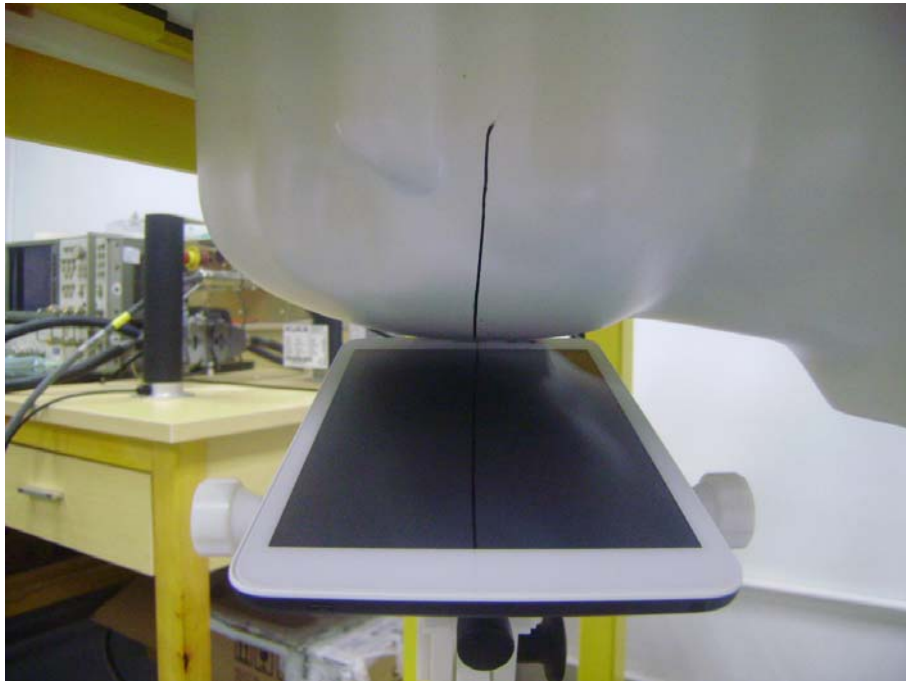
Annex D. Test Setup Photos

Test View 1 (Right Head)

Cheek

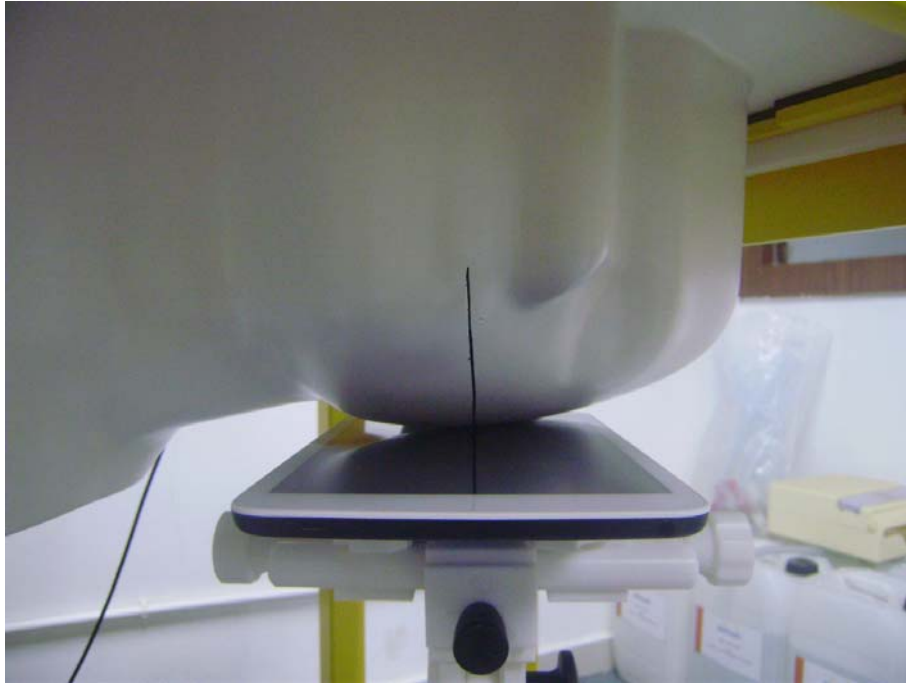


Tilt

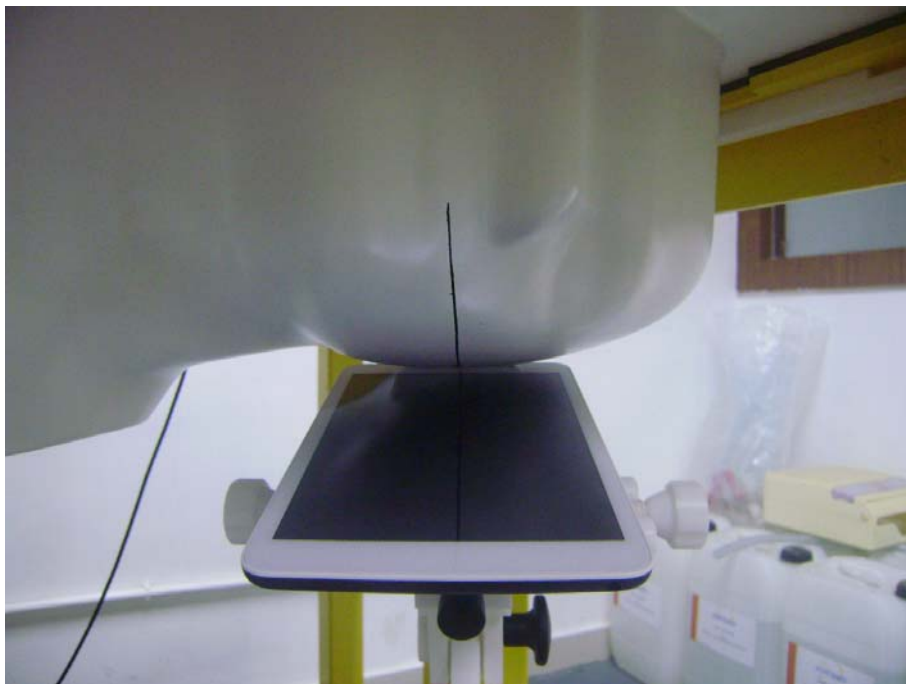


Test View 2 (Left Head)

Cheek



Tilt



Test View 3

Body Back



Right side



Left side



Top side



Bottom Side



Body-worn



Annex E. Calibration Certificate

Please refer to the exhibit for the calibration certificate

******* END OF REPORT *******