

6.8.3. Test Data

Test Result of Temperature Variation

Band :	GSM 850	Channel:	190
Limit (ppm) :	2.5	Frequency:	836.6MHz
Temperature (°C)	GPRS Class8 Deviation (ppm)		Result
50	0.010		PASS
40	0.013		
30	0.011		
20	0.009		
10	0.010		
0	0.012		
-10	0.008		
-20	0.012		
-30	0.009		

Band :	GSM 1900	Channel:	661
Limit (ppm) :	Note	Frequency:	1880MHz
Temperature (°C)	GPRS Class8 Deviation (ppm)		Result
50	0.022		PASS
40	0.021		
30	0.019		
20	0.018		
10	0.017		
0	0.016		
-10	0.017		
-20	0.020		
-30	0.018		

Note: The frequency fundamental emissions stay within the authorized frequency block based on the frequency deviation measured is small.

Test Result of Voltage Variation

Band & Channel	Mode	Voltage (Volt)	Deviation (ppm)	Limit (ppm)	Result
GSM 850 CH189	GPRS Class 12	4.2	0.026	2.5	PASS
		3.7	0.023		
		BEP	0.019		
GSM 1900 CH661	GPRS Class 12	4.2	0.012	(Note 3.)	
		3.7	0.009		
		BEP	0.007		

Note:

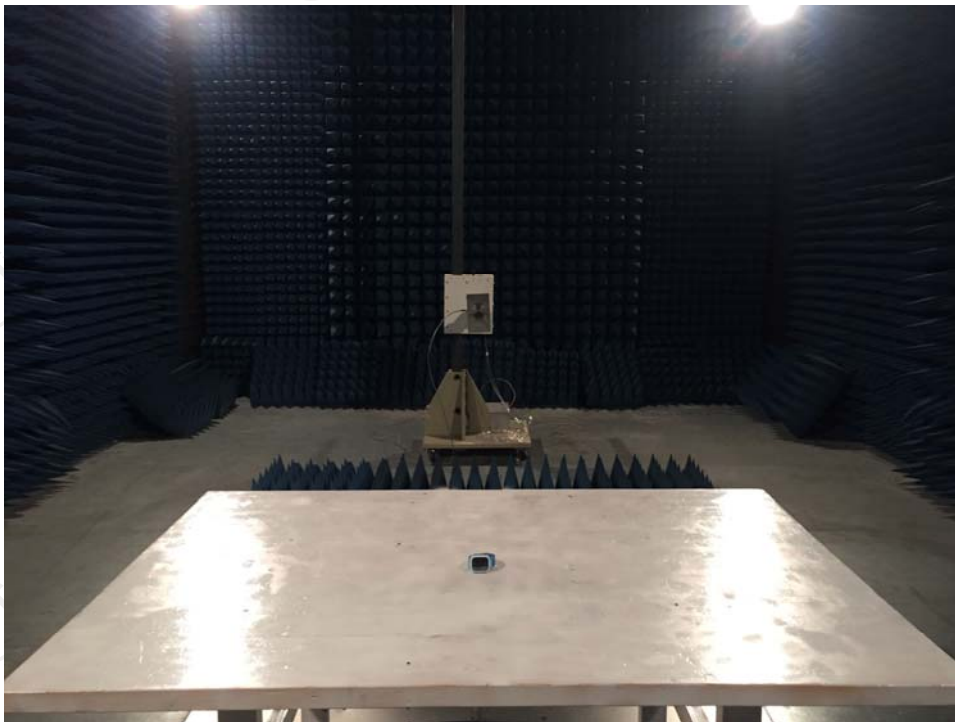
1. Normal Voltage = 3.7V.
2. Battery End Point (BEP) = 3.5V.
3. The frequency fundamental emissions stay within the authorized frequency block based on the frequency deviation measured is small.

Appendix A: Photographs of Test Setup

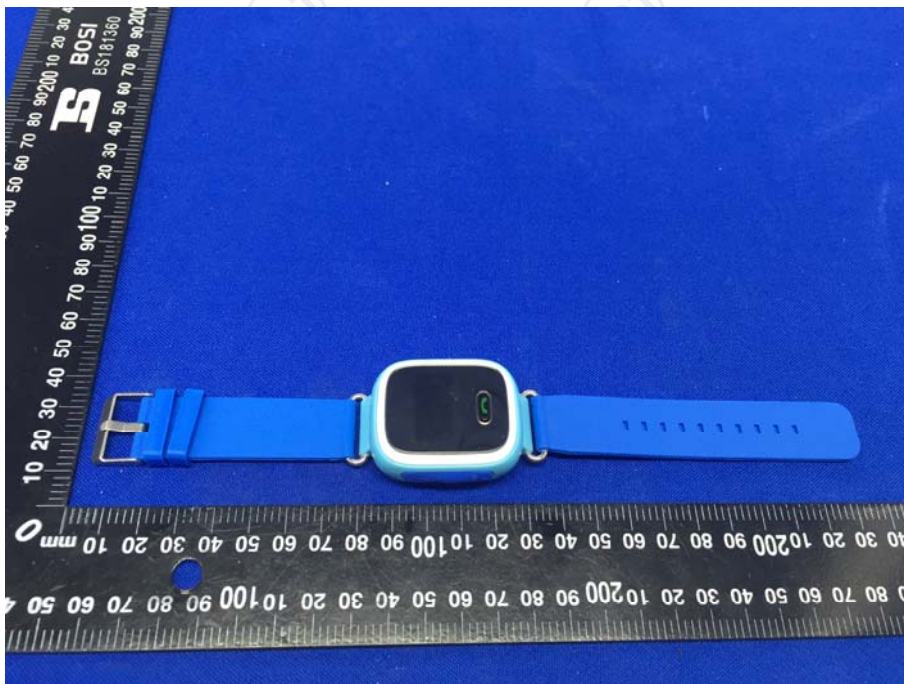
Product: ClicClock

Model: Q50

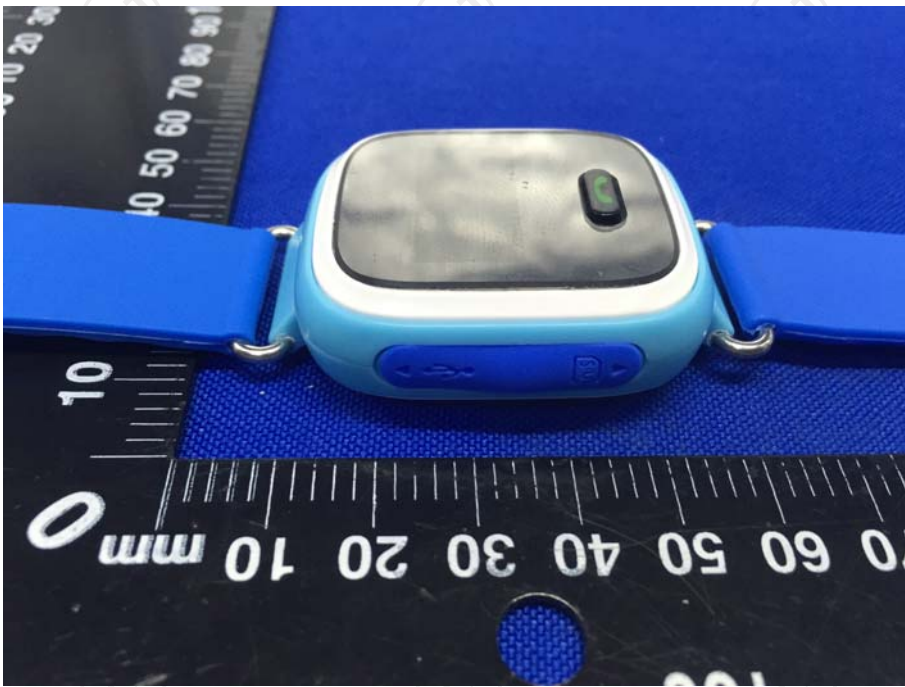
Radiated Emission



Appendix B: Photographs of EUT
Product: ClicClock
Model: Q50
External Photos

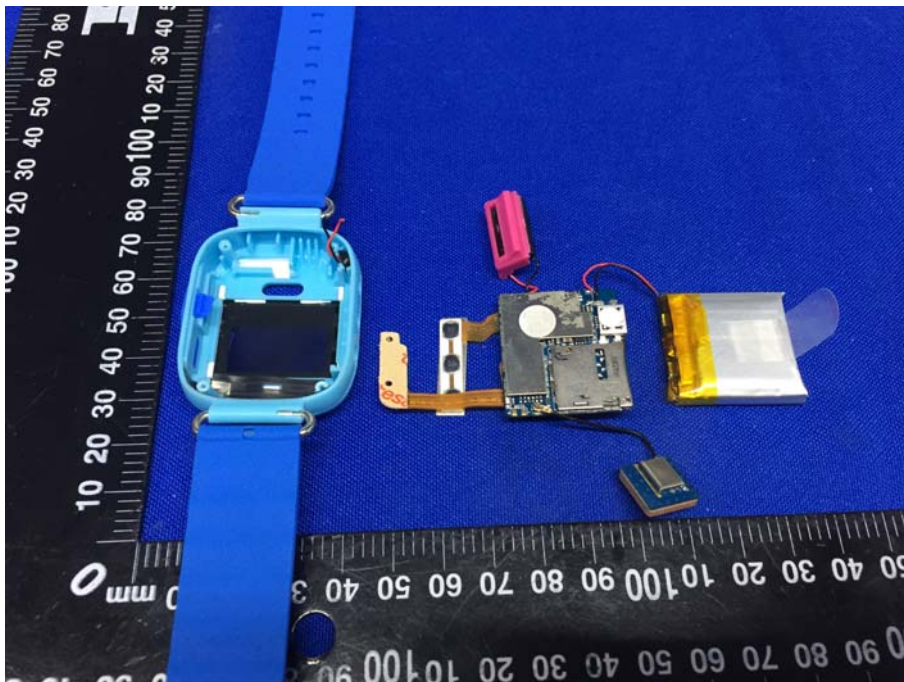


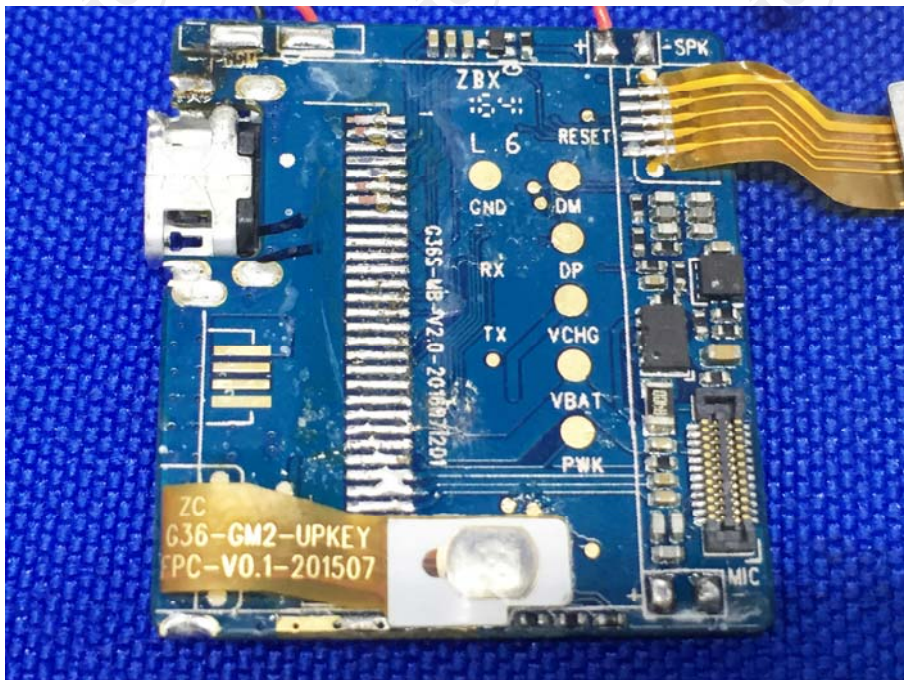
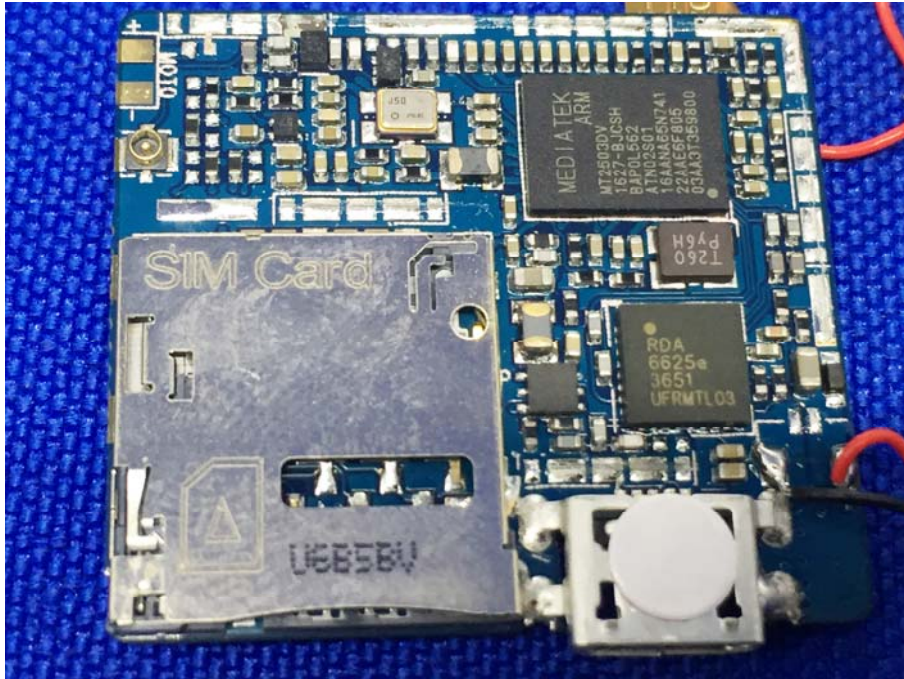


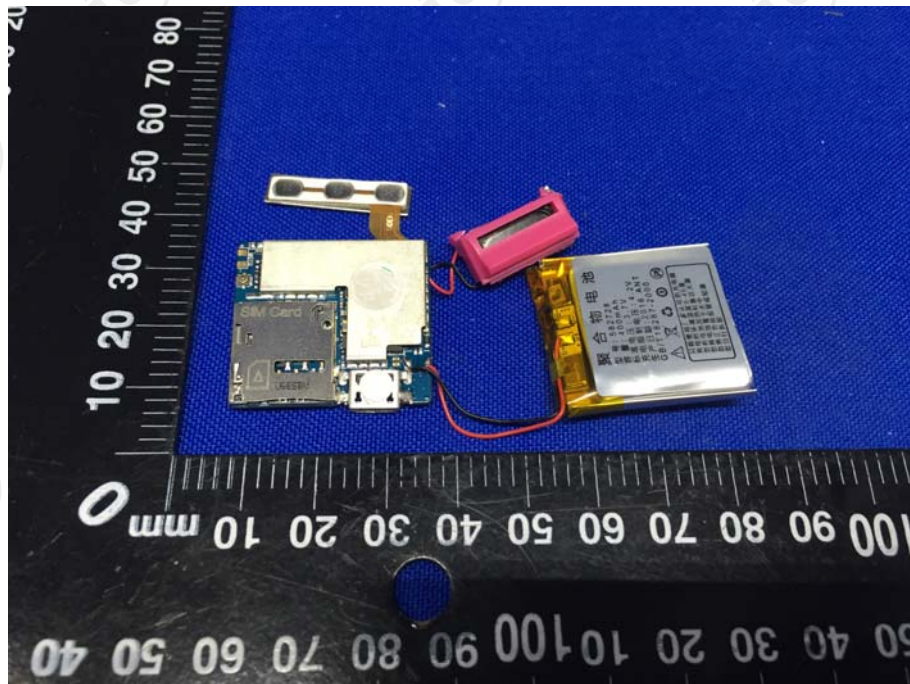
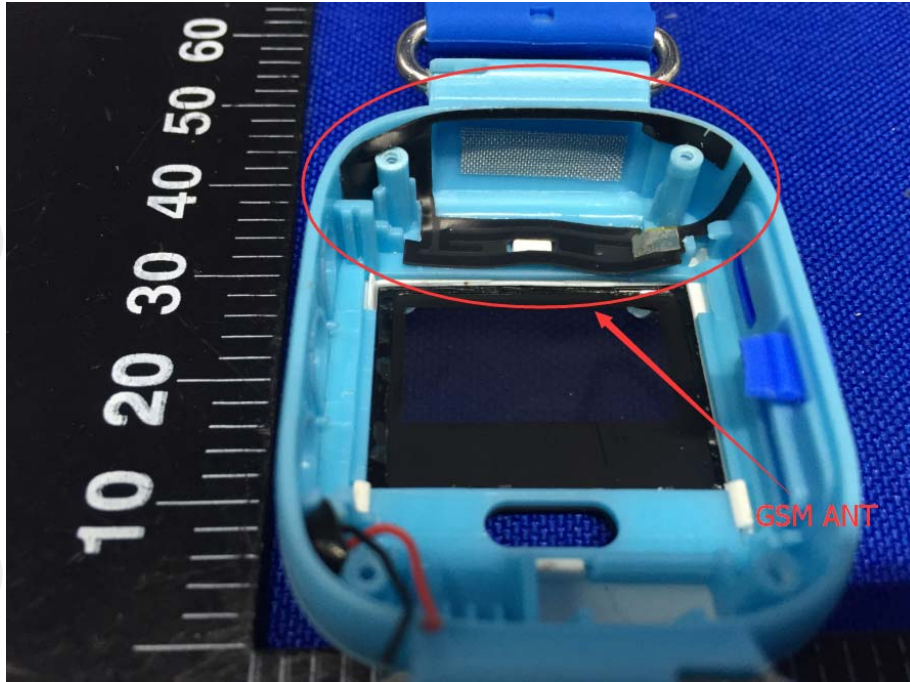


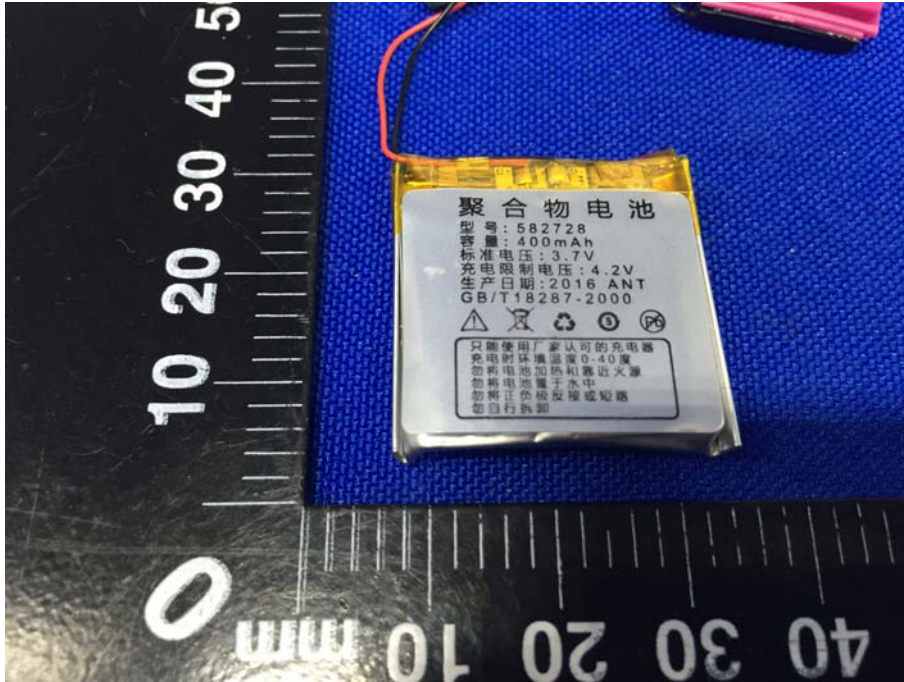


Product: ClicClock
Model: ClicClock
Internal Photos









*******END OF REPORT*******