

FCC Test Report

Report No.: AGC01765150501FE03

FCC ID : 2ABFHVT-9512TX

APPLICATION PURPOSE : Original Equipment

PRODUCT DESIGNATION : wireless camera panner

BRAND NAME : 

MODEL NAME : VT-9512TX, 857224002651

CLIENT : VIDEOTEK COMPANY LIMITED

DATE OF ISSUE : Jun.25, 2015

STANDARD(S) : FCC Part 15 Rules

REPORT VERSION : V1.0

Attestation of Global Compliance (Shenzhen) Co., Ltd

CAUTION:

This report shall not be reproduced except in full without the written permission of the test laboratory and shall not be quoted out of context.






Report Revise Record

Report Version	Revise Time	Issued Date	Valid Version	Notes
V1.0	/	Jun.25, 2015	Valid	Original Report

TABLE OF CONTENTS

1. VERIFICATION OF CONFORMITY	4
2. GENERAL INFORMATION	5
2.1. PRODUCT DESCRIPTION	5
2.2. RELATED SUBMITTAL(S) / GRANT (S)	5
2.3. TEST METHODOLOGY	5
2.4. SPECIAL ACCESSORIES	5
2.5. EQUIPMENT MODIFICATIONS	5
3. MEASUREMENT UNCERTAINTY	6
4. DESCRIPTION OF TEST MODES	6
5. SYSTEM TEST CONFIGURATION	6
5.1. EQUIPMENT USED IN EUT SYSTEM	6
5.2. SUMMARY OF TEST RESULTS	6
6. TEST FACILITY	7
7. ANTENNA REQUIREMENT	7
8. PROVISION FOR MOMENTARY OPERATION	9
8.1 MEASUREMENT PROCEDURE	9
8.2 TEST SETUP	9
8.3 TEST RESULT	10
9. DUTY CYCLE CORRECTION FACTOR	11
9.1 MEASUREMENT PROCEDURE	11
9.2 TEST SETUP	11
9.3 TEST RESULT	12
Test Mode: EUT @ 315MHz for RF Transmitter	12
10. RADIATED EMISSION	15
10.1. MEASUREMENT PROCEDURE	15
10.2. TEST SETUP	17
10.3. TEST RESULT	18
11. BANDWIDTH	20
11.1. MEASUREMENT PROCEDURE	20
11.2. TEST SETUP	20
11.3. TEST RESULT	21
APPENDIX A: PHOTOGRAPHS OF TEST SETUP	22
APPENDIX B: PHOTOGRAPHS OF EUT	23

1. VERIFICATION OF CONFORMITY

Applicant	VIDEOTEK COMPANY LIMITED
Address	Bldg, 12, Section B, Baosheng Industrial Area, Bainikeng, Pinghu town, Shenzhen, CN
Manufacturer	VIDEOTEK COMPANY LIMITED
Address	Bldg, 12, Section B, Baosheng Industrial Area, Bainikeng, Pinghu town, Shenzhen, CN
Product Designation	wireless camera panner
Brand Name	  
Test Model:	VT-9512TX
Series Model	857224002651
Model Difference	All the same except for the model name.
Date of test	Jun.18, 2015 to Jun.24, 2015
Deviation	None
Condition of Test Sample	Normal
Report Template	AGCRT-US-BR/RF (2013-03-01)

We hereby certify that:

The above equipment was tested by Compliance Certification Services(Shenzhen) Inc. The test data, data evaluation, test procedures, and equipment configurations shown in this report were made in accordance with the procedures given in ANSI C63.4 (2003) and the energy emitted by the sample EUT tested as described in this report is in compliance with radiated emission limits of FCC Rules Part 15.231.

Prepared By

Sally Wu

Sally Wu

Jun.25, 2015

Checked By

Max Zhang

Max Zhang

Jun.25, 2015

Authorized By

Solger Zhang

Solger Zhang

Jun.25, 2015

2. GENERAL INFORMATION

2.1. PRODUCT DESCRIPTION

A major technical description of EUT is described as following

Operation Frequency	315MHz
Field Strength(3m)	38.99dBuV/m(AV)@3m
Modulation	ASK
Number of channels	1
Hardware Version	N/A
Software Version	N/A
Antenna Designation	Fixed antenna
Power Supply	DC12.0V by Battery

2.2. RELATED SUBMITTAL(S) / GRANT (S)

This submittal(s) (test report) is intended for **FCC ID: 2ABFHVT-9512TX** filing to comply with Section 15.231 of the FCC Part 15, Subpart C Rules.

2.3. TEST METHODOLOGY

Both conducted and radiated testing was performed according to the procedures in ANSI C63.4 (2003). Radiated testing was performed at an antenna to EUT distance 3 meters.

2.4. SPECIAL ACCESSORIES

Refer to section 5.1.

2.5. EQUIPMENT MODIFICATIONS

Not available for this EUT intended for grant.

3. MEASUREMENT UNCERTAINTY

The reported uncertainty of measurement $y \pm U$, where expanded uncertainty U is based on a standard uncertainty multiplied by a coverage factor of $k=2$, providing a level of confidence of approximately 95 %.

No.	Item	Uncertainty
1	Conducted Emission Test	$\pm 3.18\text{dB}$
2	All emissions, radiated	$\pm 3.91\text{dB}$
3	Temperature	$\pm 0.5^\circ\text{C}$
4	Humidity	$\pm 2\%$

4. DESCRIPTION OF TEST MODES

NO.	TEST MODE DESCRIPTION
1	Transmitting mode
Note: 1. All buttons of the EUT have been pre-tested, and only the data of the worst case recorded in the test report. 2. For Radiated Emission, 3axis were chosen for testing for each applicable mode. 3. After releasing the button, the device will automatically deactivate within 5 seconds no matter how long the button you pressed.	

5. SYSTEM TEST CONFIGURATION

5.1. EQUIPMENT USED IN EUT SYSTEM

Item	Equipment	Model No.	ID or Specification	Remark
1	wireless camera panner	VT-9512TX	N/A	N/A

5.2. SUMMARY OF TEST RESULTS

FCC RULES	DESCRIPTION OF TEST	RESULT
§15.203	Antenna Requirement	Compliant
§15.231(a)(1)	Manually	Compliant
§15.231(a)(2)	automatically	N/A
§15.231(a)(3)	periodic	N/A
§15.231(a)(4)	emergency(alarm)	N/A
§15.231(a)(5)	security	N/A

§15.231(b)	Average Factor	Compliant
§15.231(b) & §15.209	Field Strength of Fundamental and Spurious Emission	Compliant
§15.231(c)	Bandwidth	Compliant
§15.231(d)	Frequency Tolerance	N/A
§15.231(e)	Field Strength(periodic transmitter)	N/A
§15.207	Conducted Emission	N/A

6. TEST FACILITY

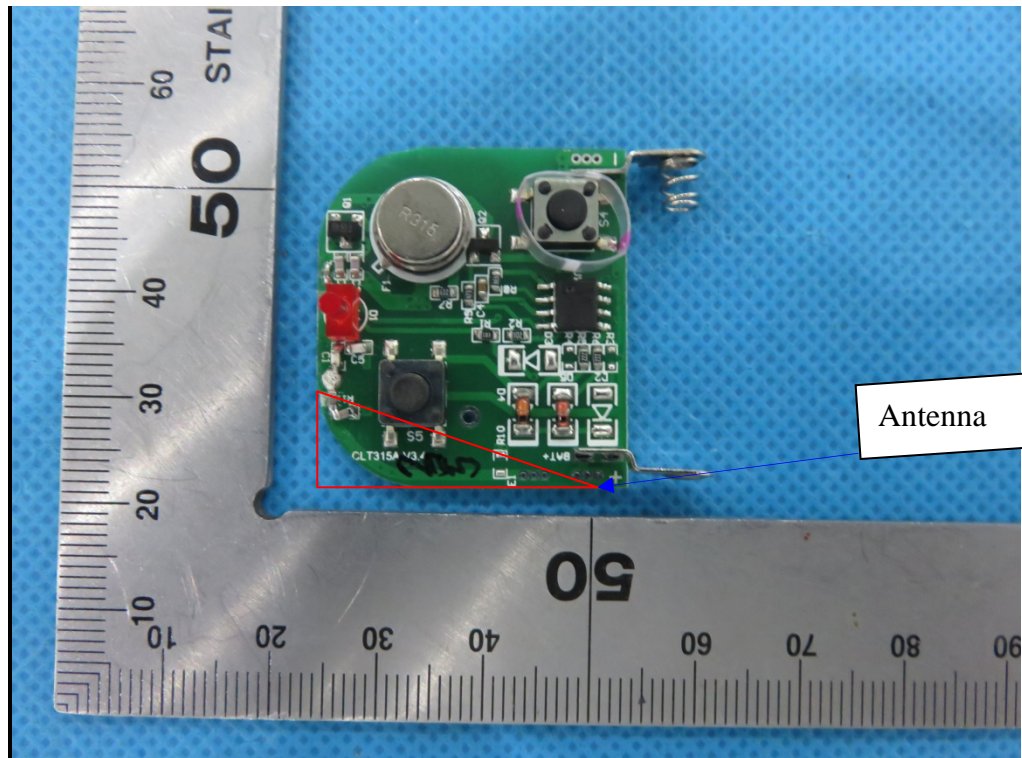
Site	Compliance Certification Services (Shenzhen) Inc.
Location	No.10-1 Mingkeda Logistics park, No.18, Huanguan South Rd.,Guan Lan Town, Baoan District, Shenzhen, China
Description	Test Firm Registration Number: 441872

Radiated Emission Test Site 966(2)					
Name of Equipment	Manufacturer	Model Number	Serial Number	Last Calibration	Due Calibration
PSA Series Spectrum Analyzer	Agilent	E4446A	US44300399	03/01/2015	03/01/2016
EMI TEST RECEIVER	ROHDE&SCHWARZ	ESCI	100783	03/09/2015	03/08/2016
Amplifier	MITEQ	AM-1604-3000	1123808	03/18/2015	03/17/2016
High Noise Amplifier	Agilent	8449B	3008A01838	03/18/2015	03/17/2016
Board-Band Horn Antenna	Schwarzbeck	BBHA 9170	9170-497	07/10/2014	07/09/2015
Bilog Antenna	SCHAFFNER	CBL6143	5082	03/01/2015	03/01/2016
Horn Antenna	SCHWARZBECK	BBHA9120	D286	03/01/2015	03/01/2016
Loop Antenna	COM-POWER	AL-130	121044	09/27/2014	09/26/2015
Turn Table	N/A	N/A	N/A	N.C.R	N.C.R
Controller	Sunol Sciences	SC104V	022310-1	N.C.R	N.C.R
Controller	CT	N/A	N/A	N.C.R	N.C.R
Temp. / Humidity Meter	Anymetre	JR913	N/A	02/28/2015	02/27/2016
Antenna Tower	SUNOL	TLT2	N/A	N.C.R	N.C.R
Test S/W	FARAD	LZ-RF / CCS-SZ-3A2			

7. ANTENNA REQUIREMENT

According to §15.203, an intentional radiator shall be designed to ensure that no antenna other than that furnished by the responsible party shall be used with the device.

The EuT has fixed antenna, which accordance to the above sections, is considered sufficient to comply with the provisions of these sections. Please see EuT photo for details.



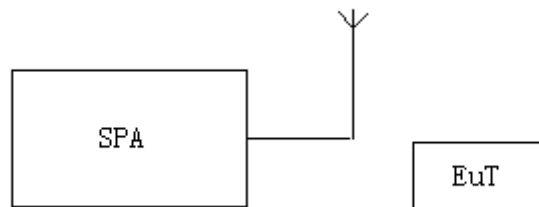
The requirements of section 15.203 are **FULFILLED**.

8. PROVISION FOR MOMENTARY OPERATION

8.1 MEASUREMENT PROCEDURE

1. Set the parameters of SPA as below:
Centre frequency = Operation Frequency
RBW=VBW=3MHz
Span: 0Hz
Sweep time: 10S
2. Set the EUT to transmit by manually operated. Use the “View” function of SPA to find the transmission time of being released.
3. Record the data and Reported.

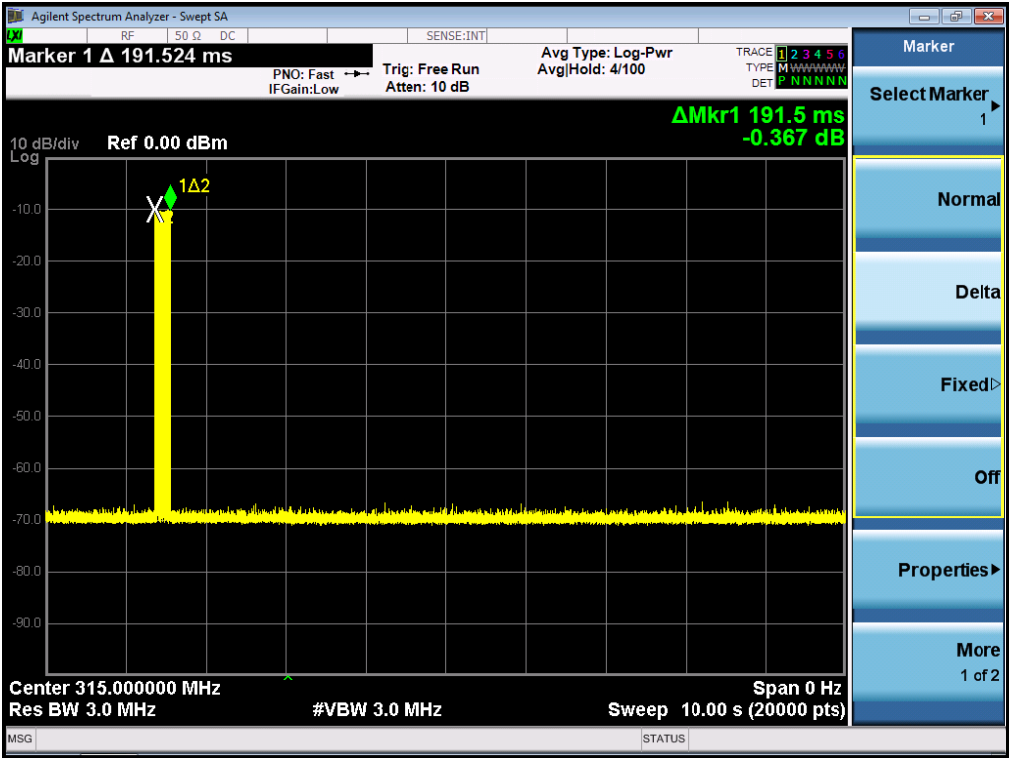
8.2 TEST SETUP



8.3 TEST RESULT

Test Mode: EUT @ 315MHz for RF Transmitter

The time of stopping transmission after switch releasing (s)	Limit (s)
0.19	5.00



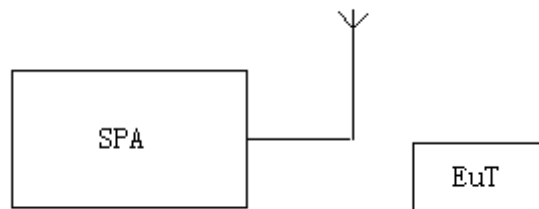
RESULT: PASS

9. DUTY CYCLE CORRECTION FACTOR

9.1 MEASUREMENT PROCEDURE

1. Set the parameters of SPA as below:
Centre frequency = Operation Frequency
RBW=VBW=3MHz
Span: 0Hz
Sweep time: more than two pulse trains or more than each type of pulse occupancy time
2. Set the EUT to transmit by manually operated. Use the “Delta mark” function of SPA to find the period time between two pulse trains and each type of pulse occupancy time.
3. Record the plots and Reported.

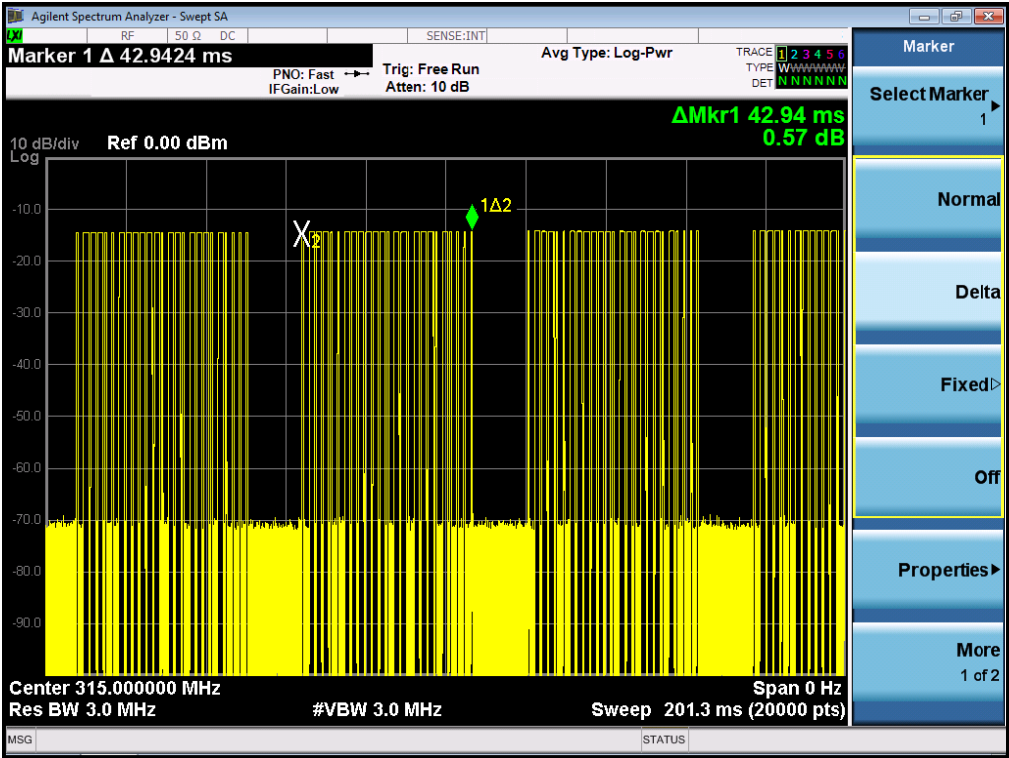
9.2 TEST SETUP

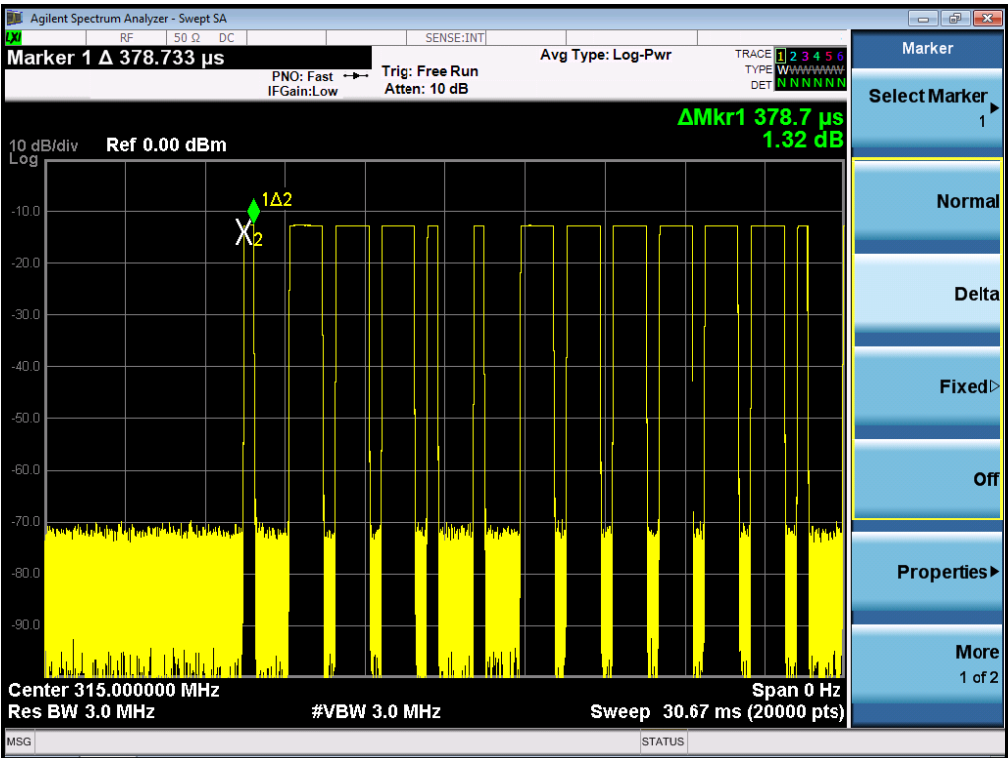
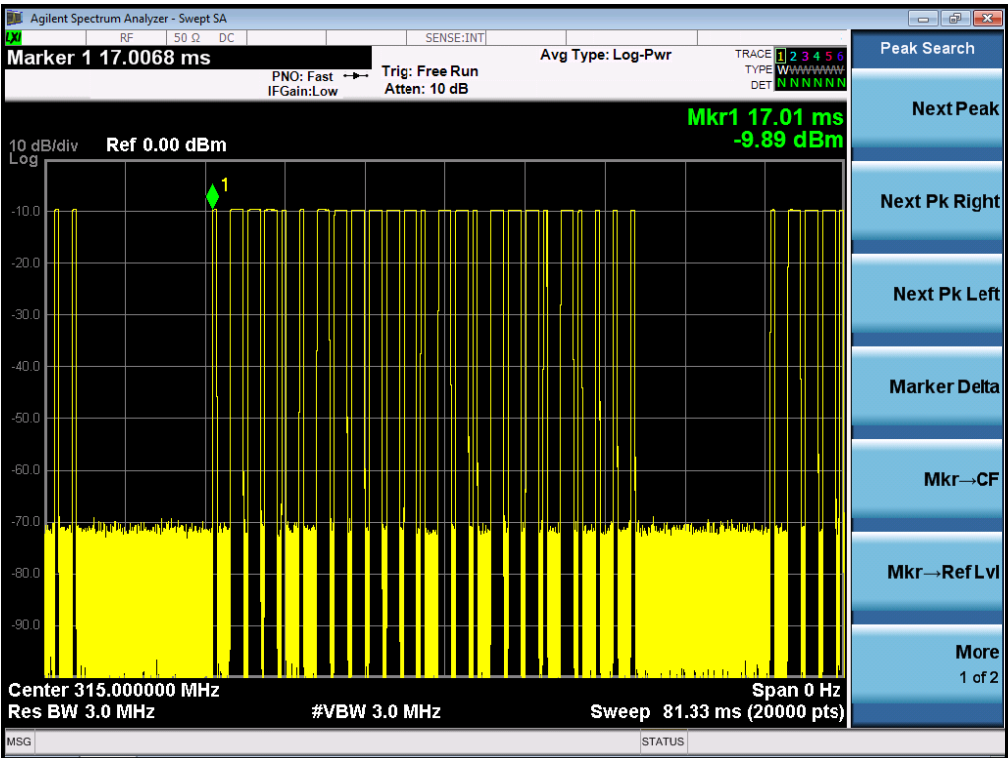


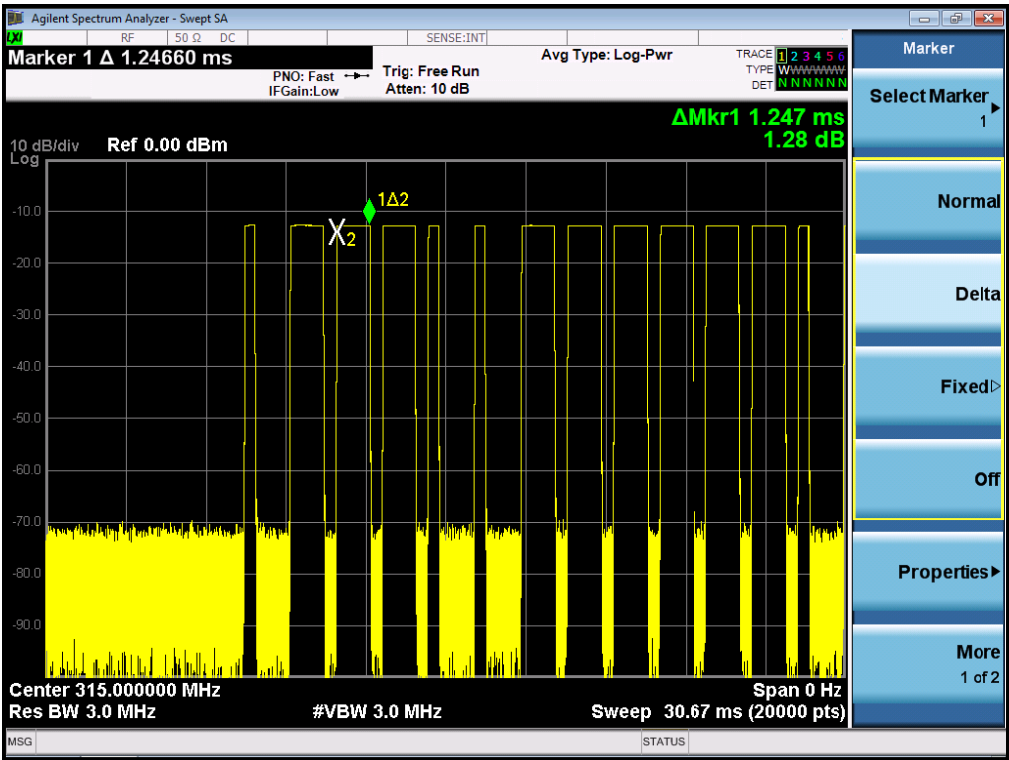
9.3 TEST RESULT

Test Mode: EUT @ 315MHz for RF Transmitter

Duty Cycle:	$(0.3787\text{ms} \cdot 10 + 1.247\text{ms} \cdot 15) / 42.94\text{ms} = 0.5238$
Duty Cycle Correction Factor:	$20\lg(0.5663) = -5.62\text{dB}$







10. RADIATED EMISSION

10.1. MEASUREMENT PROCEDURE

1. Configure the EUT according to ANSI C63.4. The EUT was placed on the top of the turntable 0.8 meter above ground. The phase center of the receiving antenna mounted on the top of a height-variable antenna tower was placed 3 meters far away from the turntable.
2. Power on the EUT and all the supporting units. The turntable was rotated by 360 degrees to determine the position of the highest radiation.
3. The height of the broadband receiving antenna was varied between one meter and four meters above ground to find the maximum emissions field strength of both horizontal and vertical polarization.
4. For each suspected emissions, the antenna tower was scan (from 1 M to 4 M) and then the turntable was rotated (from 0 degree to 360 degrees) to find the maximum reading.
5. Set the test-receiver system to Peak or CISPR quasi-peak Detect Function with specified bandwidth under Maximum Hold Mode.
6. For emissions below 1GHz, use 120KHz RBW and VBW \geq 3RBW for QP reading.
7. For emissions above 1GHz, use 1MHz VBW and RBW for peak reading. Then 1MHz RBW and 10Hz VBW for average reading in spectrum analyzer.
8. When the radiated emissions limits are expressed in terms of the average value of the emissions, and pulsed operation is employed, the measurement field strength shall be determined by averaging over one complete pulse train, including blanking intervals, as long as the pulse train does not exceed 0.1 seconds. As an alternative (provided the transmitter operates for longer than 0.1 seconds) or in cases where the pulse train exceeds 0.1 seconds, the measured field strength shall be determined from the average absolute voltage during a 0.1 second interval during which the field strength is at its maximum values.
9. If the emissions level of the EUT in peak mode was 3 dB lower than the average limit specified, then testing will be stopped and peak values of EUT will be reported, otherwise, the emissions which do not have 3 dB margin will be repeated one by one using the quasi-peak method for below 1GHz.
10. For testing above 1GHz, the emissions level of the EUT in peak mode was lower than average limit (that means the emissions level in peak mode also complies with the limit in average mode), then testing will be stopped and peak values of EUT will be reported, otherwise, the emissions will be measured in average mode again and reported.
11. In case the emission is lower than 30MHz, loop antenna has to be used for measurement and the recorded data should be QP measured by receiver. High - Low scan is not required in this case.
12. Only the worst case is reported.

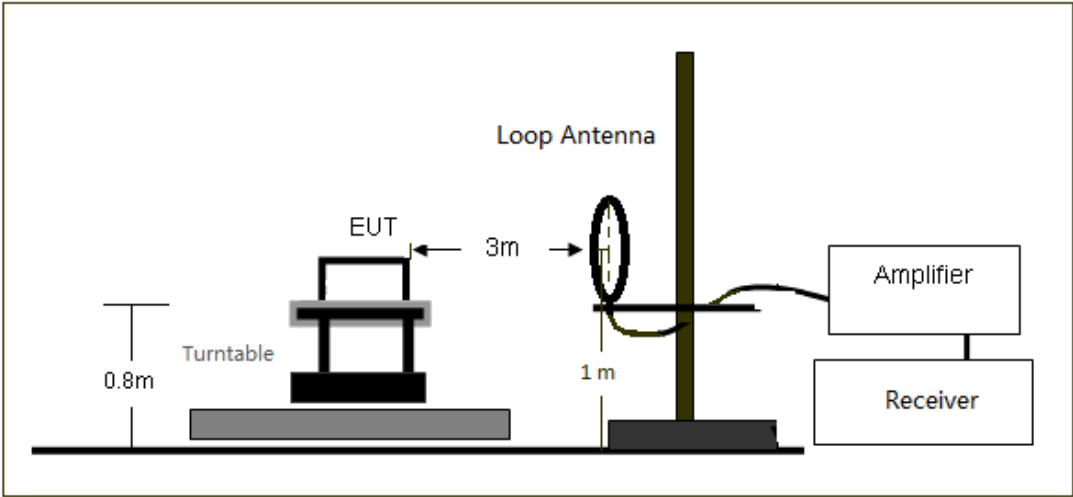
The following table is the setting of spectrum analyzer and receiver.

Spectrum Parameter	Setting
Start ~Stop Frequency	9KHz~150KHz/RBW 200Hz for QP
Start ~Stop Frequency	150KHz~30MHz/RBW 9KHz for QP
Start ~Stop Frequency	30MHz~1000MHz/RBW 120KHz for QP
Start ~Stop Frequency	1GHz~26.5GHz 1MHz/1MHz for Peak, 1MHz/10Hz for Average

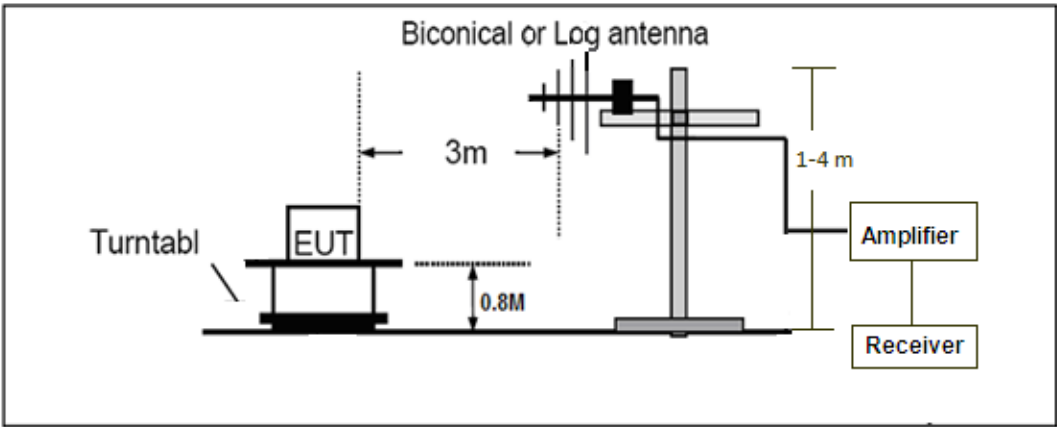
Receiver Parameter	Setting
Start ~Stop Frequency	9KHz~150KHz/RBW 200Hz for QP
Start ~Stop Frequency	150KHz~30MHz/RBW 9KHz for QP
Start ~Stop Frequency	30MHz~1000MHz/RBW 120KHz for QP

10.2. TEST SETUP

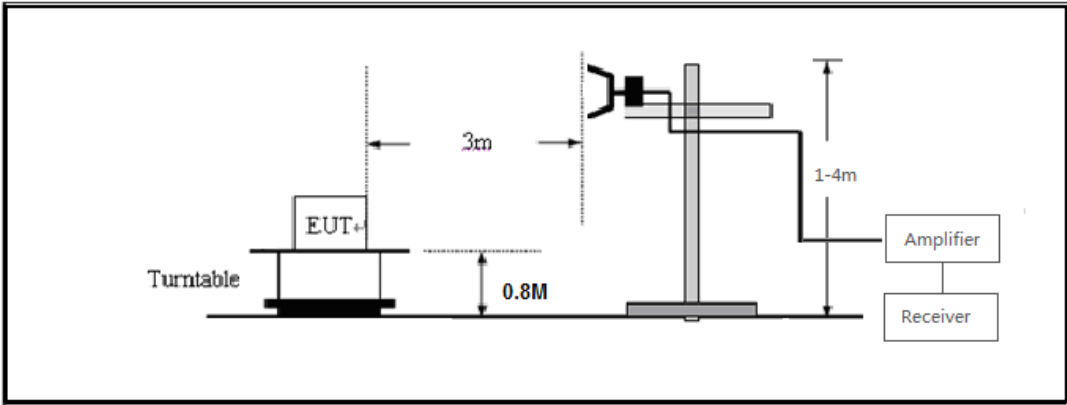
RADIATED EMISSION TEST SETUP BELOW 30MHz



RADIATED EMISSION TEST SETUP 30MHz-1000MHz



RADIATED EMISSION TEST SETUP ABOVE 1000MHz



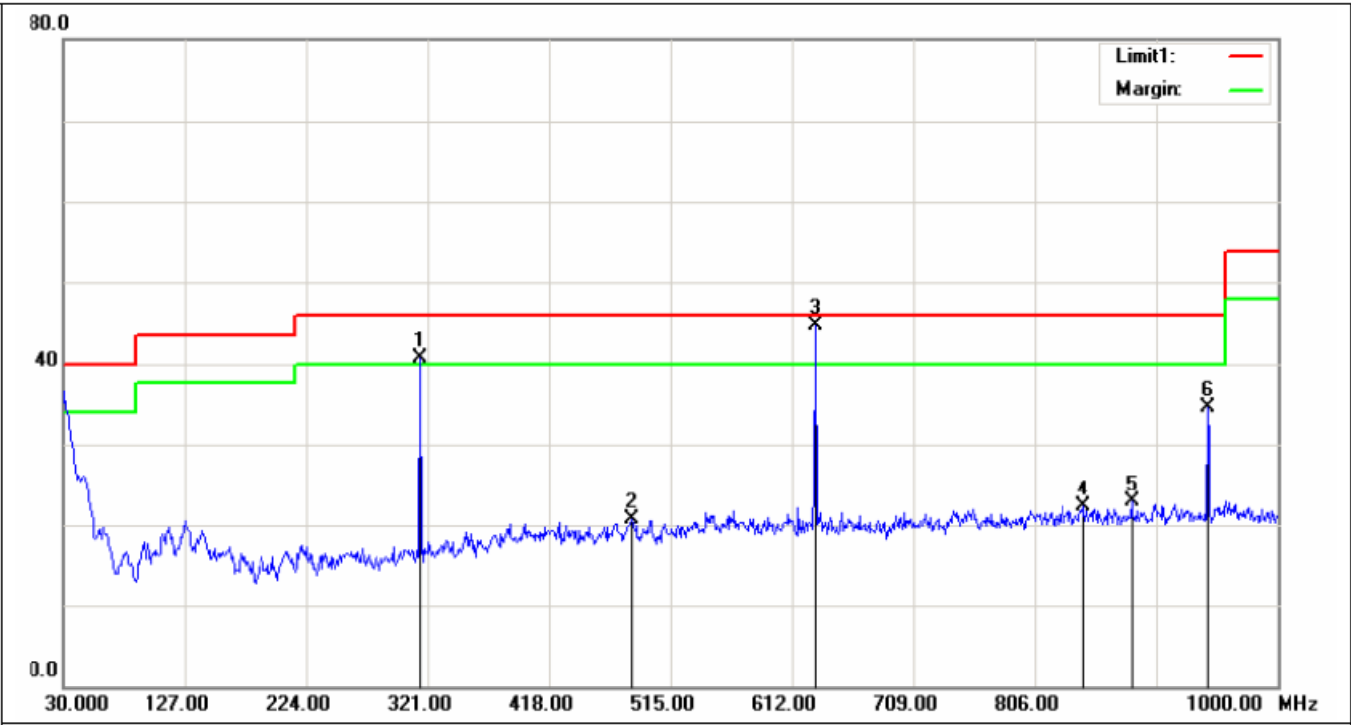
10.3. TEST RESULT

Test Mode: EUT @ 315MHz for RF Transmitter

RADIATED EMISSION BELOW 30MHz

No emission found between lowest internal used/generated frequencies to 30MHz.

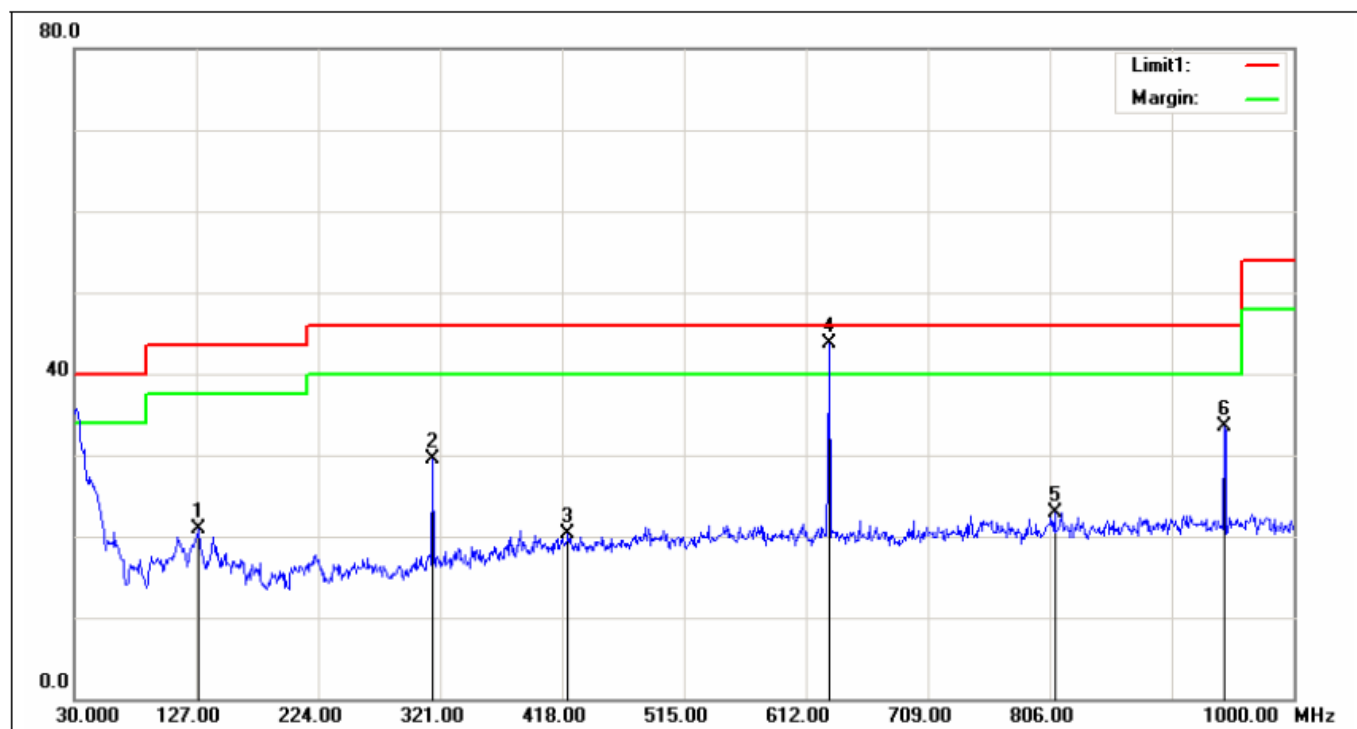
RADIATED EMISSION BELOW 1GHZ-Horizontal



Frequency MHz	Polarization	Reading dB(uV)	Factor dB(1/m)	PK Level dB(uV/m)	Limit dB(uV/m) PK	Margin dB	Pass/Fail	Detector	Remark
314.695	H	59.66	-19.05	40.61	95.6	-54.99	Pass	PK	Fundamental
629.945	H	57.11	-12.50	44.61	75.6	-30.99	Pass	PK	Harmonic
945.195	H	44.03	-9.62	40.61	75.6	-34.99	Pass	PK	Harmonic

Frequency MHz	Polarization	PK Level dB(uV/m)	Duty Cycle Correction Factor: dB	AV Level dB(uV/m)	Limit dB(uV/m) AV	Margin dB	Pass/Fail	Remark
314.695	H	40.61	-5.62	34.99	75.6	-40.61	Fail	Fundamental
629.945	H	44.61	-5.62	38.99	55.6	-16.61	Fail	Harmonic
945.195	H	34.41	-5.62	28.79	55.6	-26.81	Fail	Harmonic

RADIATED EMISSION BELOW 1GHZ-Vertical



Frequency MHz	Polarization	Reading dB(uV)	Factor dB(1/m)	PK Level dB(uV/m)	Limit dB(uV/m) PK	Margin dB	Pass/Fail	Detector	Remark
314.695	V	48.61	-19.05	29.56	95.6	-66.04	Pass	PK	Fundamental
629.945	V	56.24	-12.50	43.74	75.6	-31.86	Pass	PK	Harmonic
945.195	V	43.09	-9.62	33.47	75.6	-42.13	Pass	PK	Harmonic

Frequency MHz	Polarization	PK Level dB(uV/m)	Duty Cycle Correction Factor: dB	AV Level dB(uV/m)	Limit dB(uV/m) AV	Margin dB	Pass/Fail	Remark
314.695	V	29.56	-5.62	23.94	75.6	-51.66	Fail	Fundamental
629.945	V	43.74	-5.62	38.12	55.6	-17.48	Fail	Harmonic
945.195	V	33.47	-5.62	27.85	55.6	-27.75	Fail	Harmonic

RESULT: PASS

Note: 1. Factor=Antenna Factor + Cable loss - Amplifier gain, Margin=Measurement-Limit.

2. AV Level = PK Level + Duty cycle correction factor.

3. The "Factor" value can be calculated automatically by software of measurement system.

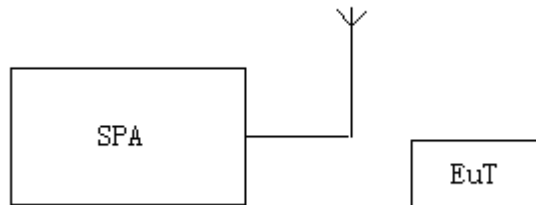
4. Emissions above 1G have 20dB margin. No recording in the test report.

11. BANDWIDTH

11.1. MEASUREMENT PROCEDURE

1. Set the parameters of SPA as below:
Centre frequency = Operation Frequency
RBW=10KHz
VBW=30KHz
Span: 3MHz
Sweep time: Auto
2. Set the EUT to continue transmitting mode. Allow the trace to stabilize. Use the “N dB down” function of SPA to define the bandwidth.
3. Record the plots and Reported.

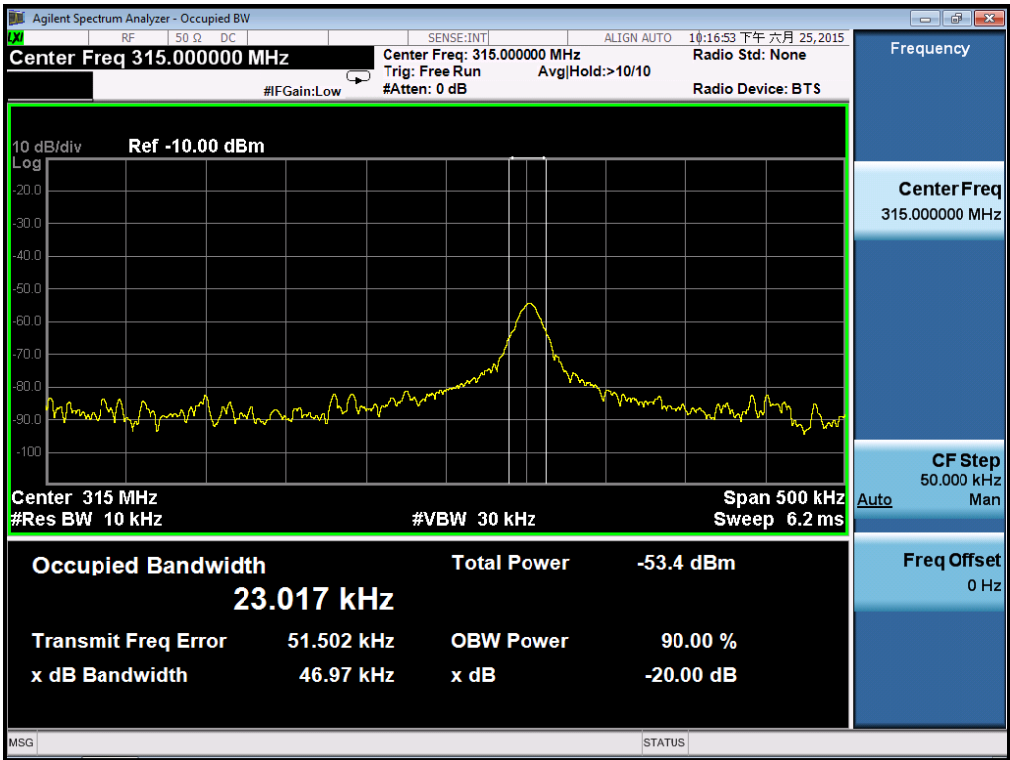
11.2. TEST SETUP



11.3. TEST RESULT

Test Mode: EUT @ 315MHz for RF Transmitter

OBW	LIMIT	RESULT
46.97kHz	787.5	Pass
Note: Limit= Operation Frequency x0.25%		



APPENDIX A: PHOTOGRAPHS OF TEST SETUP
RADIATED EMISSION TEST SETUP



APPENDIX B: PHOTOGRAPHS OF EUT

TOP VIEW OF EUT



BOTTOM VIEW OF EUT



FRONT VIEW OF EUT



BACK VIEW OF EUT



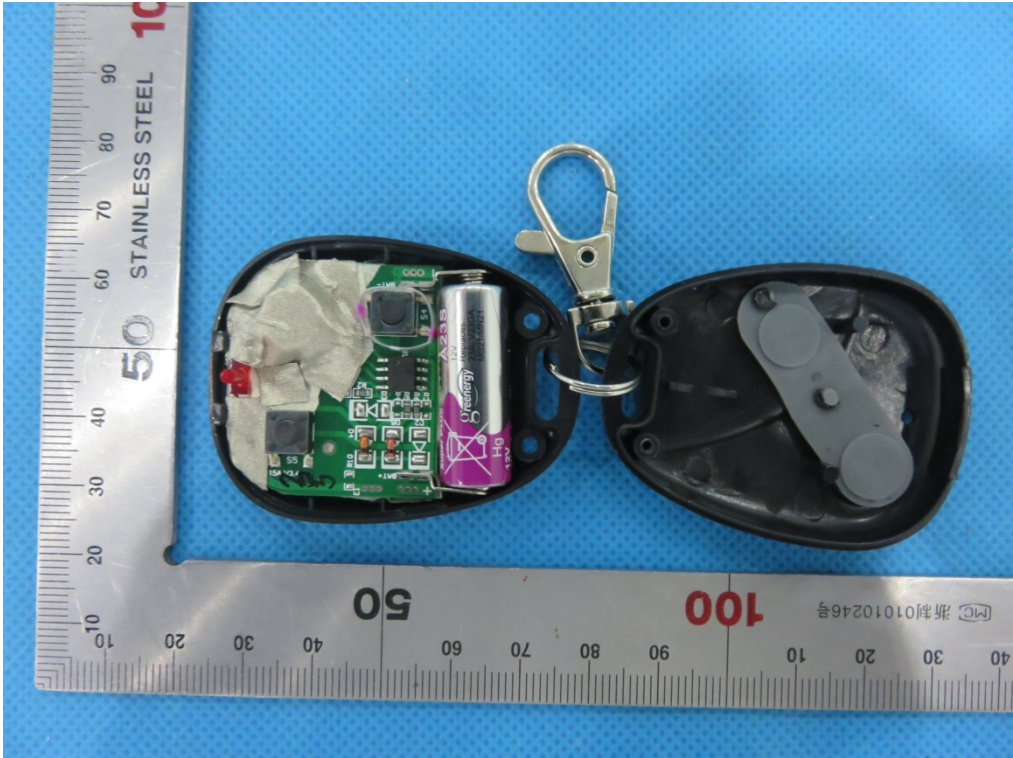
LEFT VIEW OF EUT



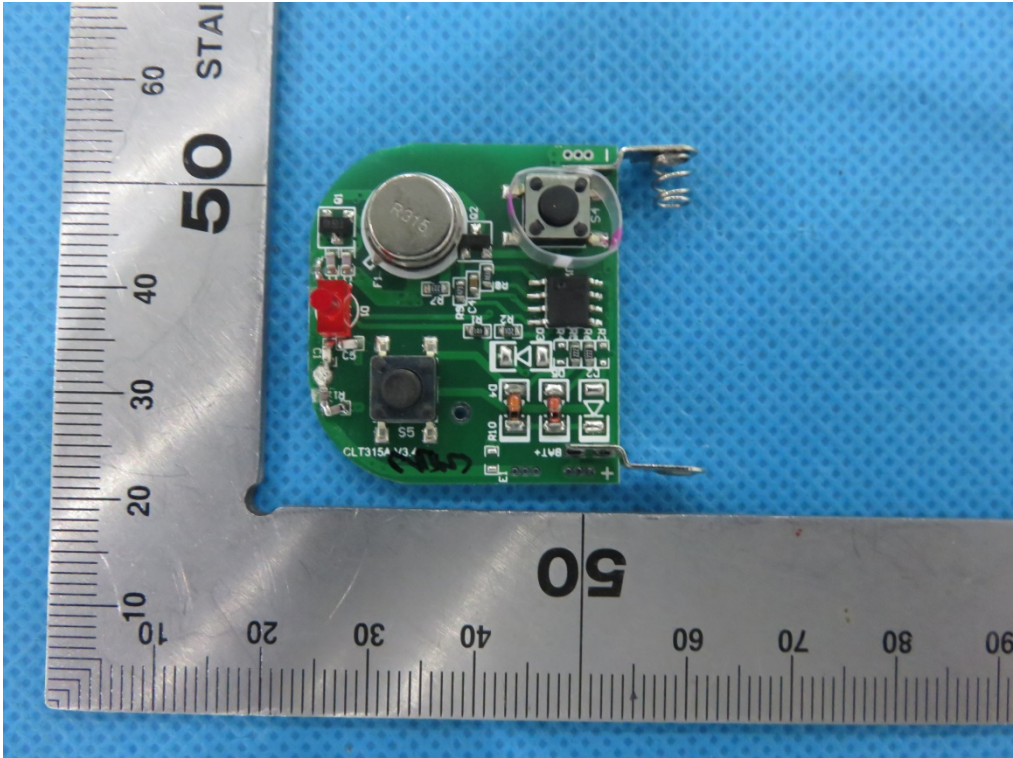
RIGHT VIEW OF EUT



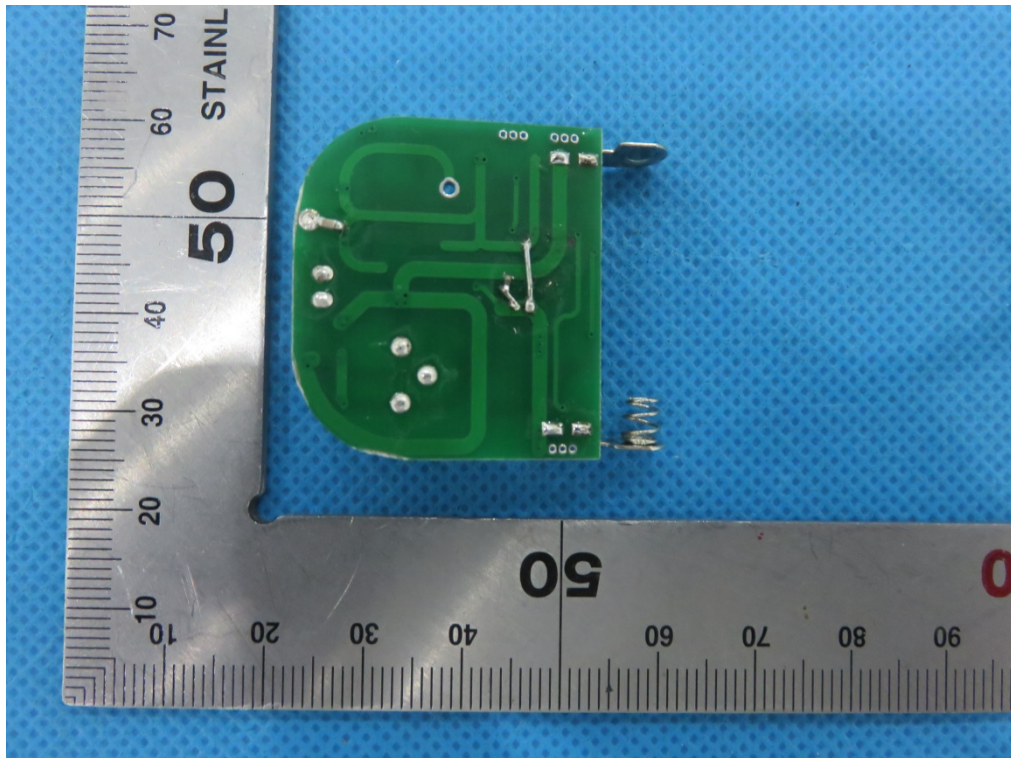
OPEN VIEW OF EUT



INTERNAL VIEW OF EUT-1



INTERNAL VIEW OF EUT-2



-----END OF REPORT-----