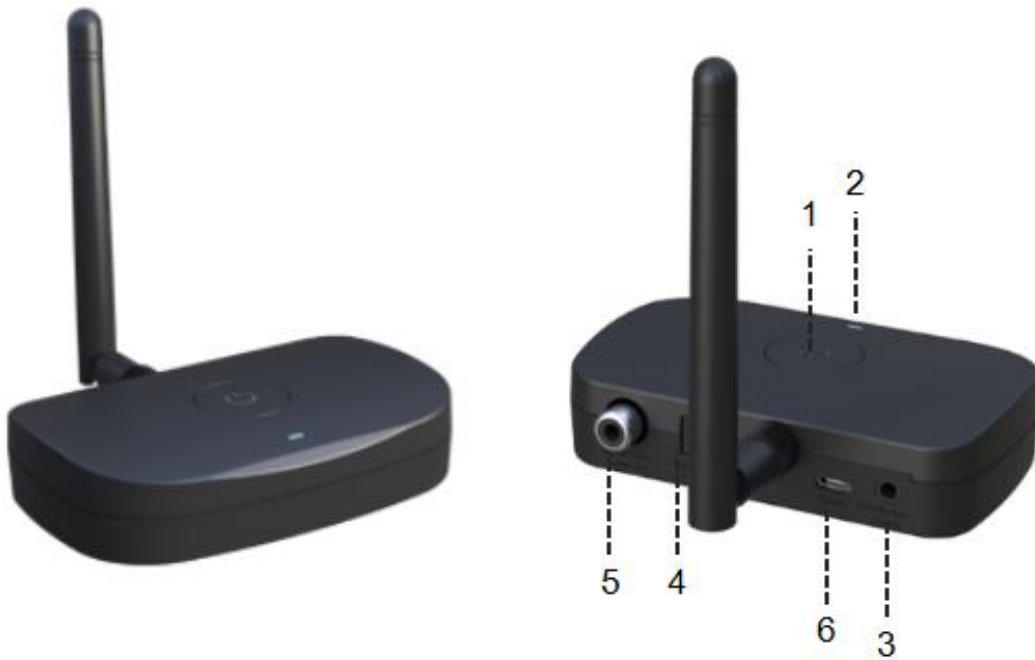


BTC21
Bluetooth Transmitter and Receiver

Product Diagram

1. Multi-function Button
2. LED Indicator
3. 3.5mm Audio Port
4. Optical Audio Port
5. Coaxial Audio Port
6. Micro USB Charging Port



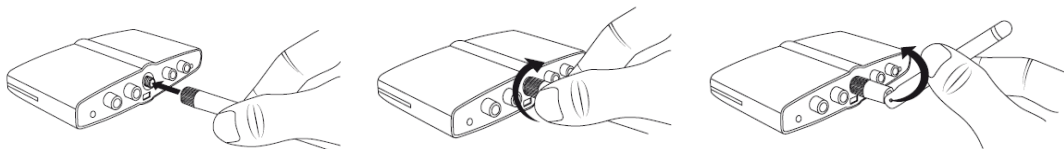
LED Indicator
Flashing Red and Blue
Solid Blue LED

Status
Pairing mode
Successfully paired

How to Use

Attach the antenna

Screw the package included antenna on to the rear of the BTC21R antenna terminal by firmly turning it to the right. Set up the antenna and set it to the desired position.



Note: Different antenna positions can affect wireless working range. Check which position gives you the best result.

Connect the AC adapter (DC 5V)

Plug the AC adapter into the wall socket. Connect the other end of the USB cable to the rear side of the BTC21R.

Setting Up Your Bluetooth Music Receiver

Connect the Bluetooth Music Receiver to an audio input on your home music system. You can either connect with a standard connection or use one with a higher definition.

- Standard options
 - i. RCA-style Right/Left connections
 - ii. Direct connect from 3.5mm to an auxiliary input (a 3.5mm Audio cable is included)

- HD options
 - i. Coaxial cable (included);
 - ii. Optical cable (not included)

Please consult your home music system's manual for more information on which connections make sense with your system.

Important notice:

Take out the 3.5mm Audio cable from 3.5mm Audio Port of this BTC21R receiver when you choose these HD options.

Turning the BTC21R Receiver On/Off

Turn on

Press and hold the multi-function button for 3 seconds, the Blue LED indicator will stay on for 1 seconds.

Turn off

Press and hold the multi-function button for 2 seconds, the Red LED indicator will stay on for 1 seconds.

Note:

- The BTC21R adapter will automatically turn off if no connection within 5 minutes.

Pairing

- 1. Connect your BTC21R Receiver to your non-Bluetooth audio receiving device.**
2. When powered off, press and hold the multifunction button for 6 seconds until the red and blue LED light flashes alternately, then this BTC21R Receiver is in the pairing mode and ready for connection.
3. Activate the Bluetooth function on your transmitting device –phone / tablet, and search for the nearby Bluetooth devices:
 - For iOS: Settings > Bluetooth > On
 - For Android: Settings > Bluetooth > On > Scan for devices
4. Find "BTC21R" in the search results and tap on it to connect. Once connected, the LED indicator will turn solid blue.

5. If a code or pin is required for pairing, please enter "0000".

Note:

- The adapter can remember previously paired devices and will attempt to pair with devices automatically, without going into pairing mode.
- The BTC21R adapter will be automatically out of pairing mode in 5 minutes and turn off if no connection within 5 minutes.

Troubleshooting

My BTC21R Receiver will not power on.

Check the power connection and make sure you pressed the multifunction button for at least 3 seconds.

Wireless working range to low

Make sure you attached the antenna correctly and no obstacles between the BTC21R and your connected devices.

Changing Connected Bluetooth Device

If you want to switch from one device to another, follow these steps:

- End the existing Bluetooth connection with the connected device by either disconnecting within your "settings" or turning off Bluetooth.
- The HD Bluetooth Music Receiver can now be connected to a different smart mobile device.
- Follow the instruction in "Pairing" to connect a different device.

My music is not coming out of the stereo speakers.

- Make sure the BTC21R is powered on.
- Make sure an audio cable is correctly and firmly connected to the BTC21R and no other audio cable plugged in the BTC21R another input jack.
- Make sure that your audio system is powered on and turned to the proper input.
- Make sure the stereo volume is set to a comfortable listening level.
- Make sure you are within range of the receiver, and that your smart device is connected via Bluetooth with this receiver.
- Make sure your audio device is playing music via Bluetooth. Some devices (such as computer) require manually selecting the music output mode.

I am having trouble pairing and connecting to my Bluetooth device.

Please check the following:

- Your Bluetooth device supports the Bluetooth profiles listed in the specifications.
- This Receiver and your device are next to each other or within 3 feet / 1 meter.
- This Receiver is in pairing mode; this is indicated by the LED flashing in red and blue alternately.

NOTE: This equipment has been tested and found to comply with the limits for a Class B digital device, pursuant to part 15 of the FCC Rules. These limits are designed to provide reasonable protection against harmful interference in a residential installation. This equipment generates uses and can radiate radio frequency energy and, if not installed and used in accordance with the instructions, may cause harmful interference to radio communications. However, there is no guarantee that interference will not occur in a particular installation. If this equipment does cause harmful interference to radio or television reception, which can be determined by turning the equipment off and on, the user is encouraged to try to correct the interference by one or more of the following measures:

- Reorient or relocate the receiving antenna.
- Increase the separation between the equipment and receiver.
- Connect the equipment into an outlet on a circuit different from that to which the receiver is connected.
- Consult the dealer or an experienced radio/TV technician for help

Changes or modifications not expressly approved by the party responsible for compliance could void the user's authority to operate the equipment.

This device complies with Part 15 of the FCC Rules. Operation is subject to the following two conditions:

(1) this device may not cause harmful interference, and (2) this device must accept any interference received, including interference that may cause undesired operation.

This device contains licence-exempt transmitter(s)/receiver(s) that comply with Innovation, Science and Economic Development Canada's licence-exempt RSS(s). Operation is subject to the following two conditions:

- (1) This device may not cause interference.
- (2) This device must accept any interference, including interference that may cause undesired operation of the device.

L'émetteur/récepteur exempt de licence contenu dans le présent appareil est conforme aux CNR d'Innovation, Sciences et Développement économique Canada applicables aux appareils radio exempts de licence. L'exploitation est autorisée aux deux conditions suivantes :

- (1) L' appareil ne doit pas produire de brouillage;
- (2) L' appareil doit accepter tout brouillage radioélectrique subi, même si le brouillage est susceptible d' en compromettre le fonctionnement.