

Front

Remote Control Drone Car

Instruction Manual
7198-22



Main Characteristics

- Four-axis structure is applied, which makes the flying car more flexible and rapid when flying. It has the characteristics of wind-resistant and can be flied indoor or outdoor.
- Car and aircraft are integrated as one, which only can fly but also move on the land.
- Built-in 6-axis gyroscope for precise hovering in the sky.
- Modular design structure is applied, more simple for assembly and convenient for maintenance.
- 360° flip & rolls function.
- Added Headless functions, enables the flying car to be recalled back with ease. The materials and specifications mentioned in this instruction manual or the parts inside this package is for reference only.

Safety Precautions

- Please keep the small parts of the drone where children cannot reach, so as to avoid accidents.
- The drone is very powerful, take care when adjusting the speed joystick in the first flight in case of collision.
- After initial flight, please turn off the transmitter before turning off the drone.
- Keep the drone battery out of high temperature conditions.
- Make sure to fly the drone in an open area away from people, animals, etc.
- If children operate the drone, always have an adult there to consult and take care of the situation if need be.

Maintenance

- Use a clean soft cloth to clean this product.
- Avoid from exposure or heating in the sun.
- Don't put the toy in the water. Otherwise, it'll damage the electrical parts.
- Please check the plug and other accessories at regular intervals.
- If there is any damage, please stop using it immediately until it is repaired completely.

Contents

- Remote Control Drone Car
- 2.4G remote controller
- USB charging wire
- Instruction Manual
- Propellers
- Screwdriver



Remote Control Button Functions



1. Left Joystick (rise, fall, turn left, right)

2. Speed shift key

3. Power ON/OFF

4. Forward Fine-tuning

5. Roll

6. Right Joystick (forward, back, left, right, side flying)
7. Headless Mode

8. Take Off

9. Landing

10.LED Indicator

11. Left Fine-tuning

12.Backward Fine-tuning

13.Right Fine-tuning

14.Return

How to Begin Flying/Driving the Drone

1. Turn on the remote.
2. Once ON, place the drone the ground (remote control indicator light and the car LED light will flash).
3. Push the throttle lever to the top and then pull it back to the lowest point, a sound will indicate success.
4. At the same time: push the left joystick to the left corner, and the right into the right corner to initiate the flight.



Note: if you did not unlock the flight mode, it is only the operation of land mode.

Stop Flight, Enter Car Mode

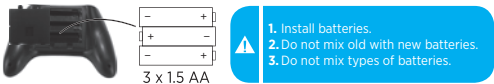
1. Hold the left throttle down to stop the propellers.
2. In case of special circumstances or in need for emergency land, the left joystick should be directed to the right corner, and the right joystick to be directed to the left corner.
3. The car will stop and lock flight mode.



Key Points in Flight

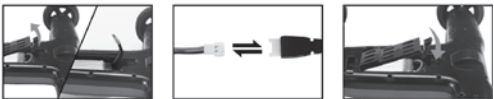
1. When flying under the headless mode, the antenna of the remote control must e pointed in the flying car. When the flying car is moving, the remote control should move synchronously.
2. When the indicator light of the car is flashing, that means low battery, please return and land as soon as possible.

Battery Installation for Remote Control



Battery installation for the remote control: Open the battery cover on the back of the control, according to the polarity instruction on the battery box, loaded 3 AAA batteries correctly (batteries are not included).

Drone Battery Replacement & Charging

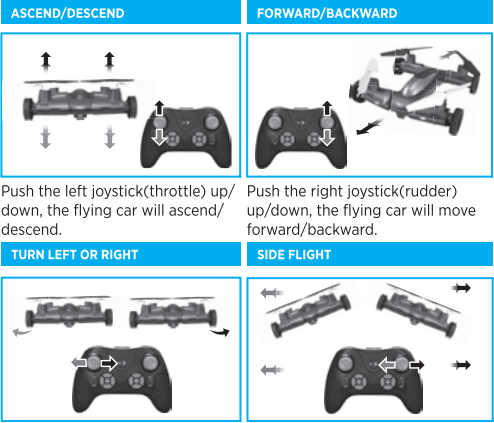


Open up the battery cover at the back of the remote control. Pull the battery out of the power port.

Connect the power line of the battery with USB. Then connect the USB port with computer (the indicator will light up while charging, and it will turn off it is fully charged.)

After the replacement of the battery, clasp the battery cover again.

The Operation Illustration of the Flying Car



Push the left joystick(throttle) up/down, the flying car will ascend/descend.

Push the right joystick(rudder) up/down, the flying car will move forward/backward.

Push the left joystick(throttle) to the left/right, the flying car will turn to left/right.

Push the right joystick(rudder) to the left/right, the flying car will fly sideways to the left/right.

Fine-tuning Operation



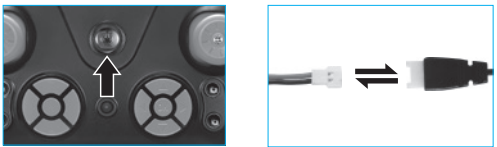
If the flying car fly forward/backward automatically while hovering, you can push the forward/backward fine tuning button accordingly to correct the error.

If the flying car fly to the left/right side automatically while hovering, you can push the left/right side flight fine tuning button accordingly to correct the error.

If the flying car turn to the left/right automatically while hovering, you can push the left/right fine tuning button accordingly to correct the error.

Drone Flying

1. Low Voltage Protection: When the battery capacity is low, the control system of flying car will protect the battery by cutting off the power supply of the rotor wings. The flying car should be recharged to fly again after low-voltage protection.
2. Reset Function: When flight disorder or side flight occurs, you can restore factory settings by operating as follows



1. Turn on the remote controller
2. After loaded the battery to flying car, please connect the connecting lines and then pull the switch of flying car to "NO".



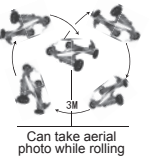
3. Place the flying car on a level surface, push the throttle joystick to the highest point and then pull back to the lowest point when the indicator light of the flying car becomes slowly flashing from quickly flashing. Then the indicator light of flying car would becomes normally on from slowly flashing.
4. Place the flying car on a level surface, push the left joystick to the lower right corner, then push the right joystick to the lower right corner for 2 to 3 seconds, the indicator light of the flying car would become flashing quickly from normally on. Then it would become normally on again for another 2 to 3 seconds, that means the reset has succeeded.

Throwing the Drone into Flight

- The adoption of six-axis gyro has greatly increase the playability of flying car. If you push the throttle joystick when you throw the flying car out or flip it upward, the flying car can hovering in air stably.

3D Flips & Rolls:

- When the basic functions can be skillful operated, you can play some adventurous flips and rolls. Fly the flying car above the ground more than 3 meters, hovering, then push the rolling button on the controller. At this moment,when you can hear a beep from the controller, please push the left joystick to the highest point of forward/ backward/ left/ right within 3 seconds, the flying car would flips forward/ backward/ leftward/ rightward. And it will recover to normal after 3 seconds.



Note: When the battery is fully charged, the rolling performance would be best.

Headless Mode

- When you cannot recognize which direction the flying car head to(the controller would ringing continuously when the headless mode button is pressed), shift to headless mode, the flying car would take the position of the operator as its destination, so no matter which direction the flying car head to, you can recall the flying car easily. If you press the headless mode button again, the controller would ring several times, and then the headless mode is canceled.

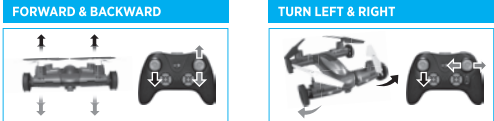


One Key Return Mode

- When you cannot recognize which direction the flying car head to(the controller would ringing continuously when the headless mode button is pressed), shift to headless mode, the flying car would take the position of the operator as its destination, so no matter which direction the flying car head to, you can recall the flying car easily. If you press the headless mode button again, the controller would ring several times, and then the headless mode is canceled.
1. Headless Mode toggle
 2. One Key Return function
 3. Randomly push the right joystick to cancel the auto return



Transition Between Car and Drone Modes



When the flying car is on the land, operate the right joystick up or down, the flying car moves forward or backwards accordingly.

When the flying car is on the land, operate the right joystick to left or right, the flying car turns left or right accordingly.

Note: When operating in land mode, please pull the left joystick to the end, or the land mode cannot be operated.

FCC Statement

This device complies with Part 15 of the FCC Rules. Operation is subject to the following two conditions:

- This device may not cause harmful interference, and
- This device must accept any interference received, including interference that may cause undesired operation.

WARNING: Changes or modifications not expressly approved by the party responsible for compliance could void the user's authority to operate the equipment.

- NOTE: This equipment has been tested and found to comply with the limits for a Class B digital device, pursuant to Part 15 of the FCC Rules. These limits are designed to provide reasonable protection against harmful interference in a residential installation. This equipment generates uses and can radiate radio frequency energy and, if not installed and used in accordance with the instructions, may cause harmful interference to radio communications. However, there is no guarantee that interference will not occur in a particular installation. If this equipment does cause harmful interference to radio or television reception, which can be determined by turning the equipment off and on, the user is encouraged to try to correct the interference by one or more of the following measures:

- Reorient or relocate the receiving antenna.
- Increase the separation between the equipment and receiver.
- Connect the equipment into an outlet on a circuit different from that

- to which the receiver is connected.
- Consult the dealer or an experienced radio/TV technician for help.

Safety Notes

- ! Important Notes: Ages +14
- This drone is not a toy, it can be fun but must be taken seriously. Any improper use of this product will result in serious injury. Be aware of your personal safety, safety of others and your surrounding environment.
 - We recommend beginners learn to fly with more experienced pilots playing nearby before attempting to fly the Remote Control WiFi Drone with Camera in the same environment.
 - This Wifi Drone has parts the move at high speed, which poses a certain degree of danger.
 - Choose a wide open space without obstacles. Do not operate this Wifi Drone near buildings, crowds of people, high voltage cables, or trees to ensure the safety of yourself, others and your drone.
 - Keep small parts out of reach of children, to avoid choking hazards. Adult supervision is advised.
 - Prevent Moisture: This Wifi Drone contains many precise electrical components. Store the battery and the Wifi Drone in a dry area at room temperature. Exposure to water or moisture may cause malfunction resulting in loss of responsiveness, or a crash.
 - Proper Operation: For safety only use the included spare parts for replacements.
 - Always be aware of the Rotating Blades: When in operation, the main and tail rotor blades will be spinning at high speed. The blades are capable of inflicting serious body injury or property damage. Be careful to keep your body and loose clothing away from the blades. Never take your eyes off the Wifi Drone or leave it unattended while it is turned on. Stop operating immediately if the Wifi Drone flies out of your view. Once landed, immediately turn off the Wifi Drone and remote control.
 - Avoid Flying Alone: Beginners should avoid flying alone when learning flight skills. We recommend flying with an experienced pilot nearby in case you need help.