

Digital²

8" PAD

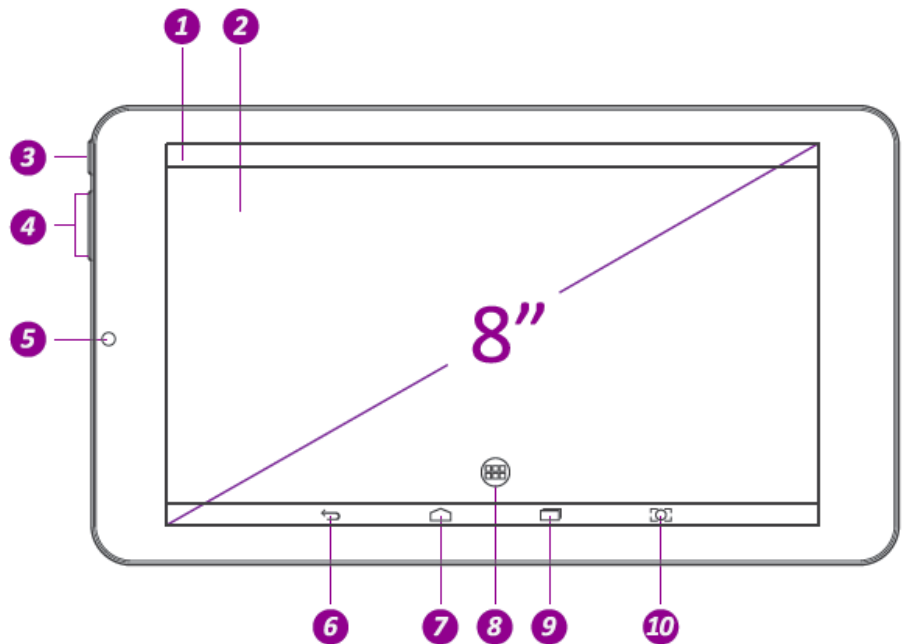
PLATINUM

Quick Start Guide

U.S Service Hotline : 1-888-863-0138
More support at www.d2pad.info

Overview

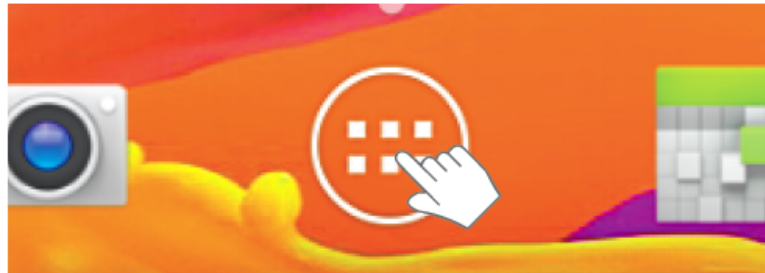
- 1 Notification Bar
- 2 Touch Screen
- 3 Power Button
- 4 Volume Buttons
- 5 Front Camera
- 6 Back Key
- 7 Home Key
- 8 Apps Menu
- 9 History Key
- 10 Screen Capture
- 11 Micro SD Slot
(Need to remove cover)
- 12 Micro USB Port
- 13 Rear Camera
- 14 Earphone Jack
- 15 Speaker



Basic Functions - App Menu

1 Touch Apps Menu.

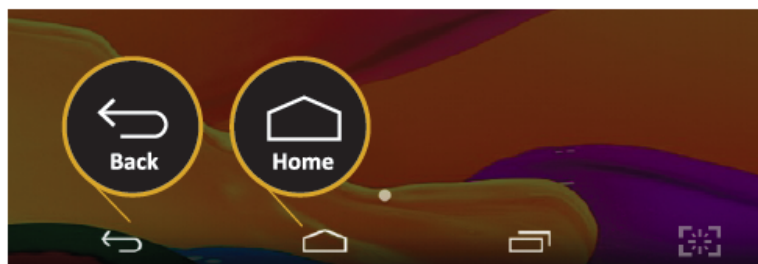
From the Home screen, select Apps Menu icon at the center bottom to access the application list.



2 Select the application you'd like to open.



3 Select the Back Key to return to the previous screen; Select the Home Key to return to the Home screen.



Basic Functions - Charging

Prior to using the Digital2® Tablet for the first time, fully charge the battery. Digital2® Tablet has a built-in Lithium battery that uses only the designated charger to charge.

In order to prolong the service life of the product, on the first couple occasions, use the device until the battery is fully depleted for the first two times before charging the battery again.

To charge the battery, connect the Micro USB cable to the included charger head to form a charger cable. Then connect the charger cable to the tablet and a wall charger.



NOTE:

- For the first two times of recharging the battery, the charge time may be up to 10 hours; following times may take up to 5 hours.
- While charging, the battery icon on the screen will scroll.
- When charging is complete, the battery icon will turn green and stop scrolling.
- When charger is plugged in after the product shuts down due to low power, it may take a few moments before the product enters the home screen and begins charging.
- The lithium battery cells in the battery pack are not user-serviceable.

When the device is not in use, be sure to turn it off to extend usage time.

If the device will not be used for a long period of time, be sure to deplete and then recharge the battery at least once a month.

The built-in lithium battery must be recharged regularly. Battery damage caused by depletion or the use of unauthorized charger is not covered by the warranty.

Personalize Your D2 PAD

1 From the Home screen select “Email”.

2 Enter your email address, password and tap “Next”.



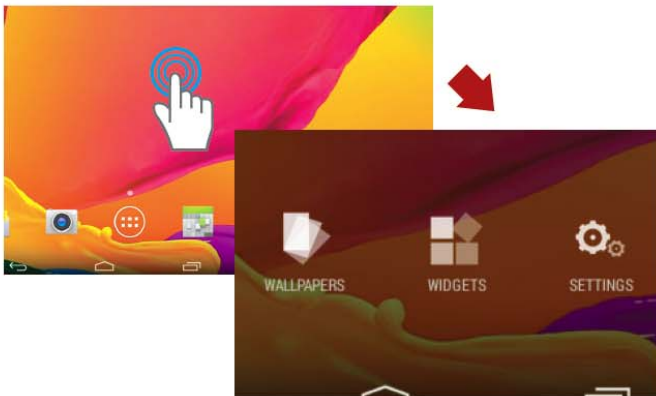
3 Select which type of email account you are setting up and complete settings. (POP3 / IMAP / Microsoft Exchange Account)

You will need to enter your user name, password, and server information depending on the type of email account or you can change the settings by tapping Manual setup at the top right corner screen. Tap “Next” and select “OK” to accept the activation notification.

Set Up Email

Change Wallpaper

1 Press and hold on a blank spot on the home screen and a menu will show up.



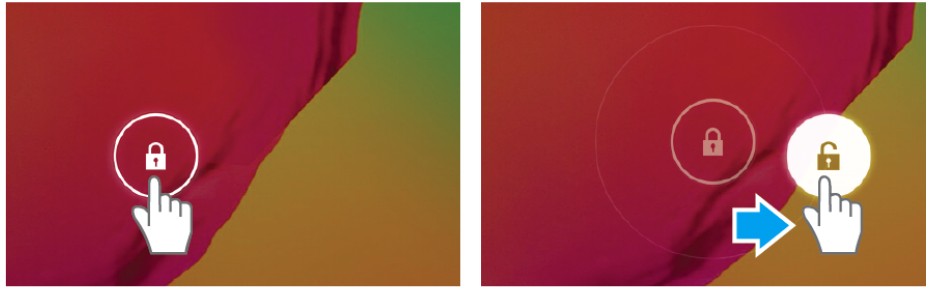
Choose between wallpapers, widgets, or settings options. In the wallpapers menu, click “Pick image” to pick from the photos you took with the camera. In the widgets menu, click and hold on to a widget, and place it onto the home page, then let go when finished positioning the widget.

Basic Functions - Power On

1 Press the power button to power on.

To power on your Digital2® Tablet, press and hold the power button for a few seconds until the Android logo appears.

2 Slide the Unlock icon to awaken screen.



3 Press and hold the Power button for 5 seconds, then a dialog box will pop up.

4 Select "Power off" to turn off your tablet.



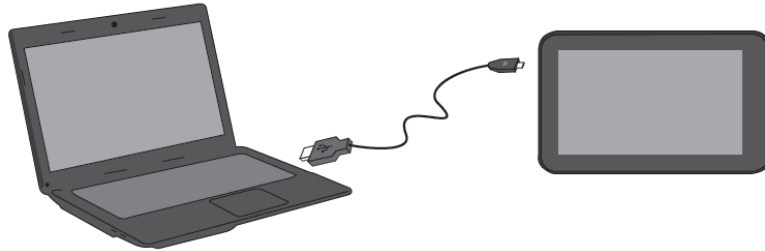
Troubleshooting:

If your device is frozen and unresponsive, press and hold the POWER Key for 10-15 seconds to turn off the power.

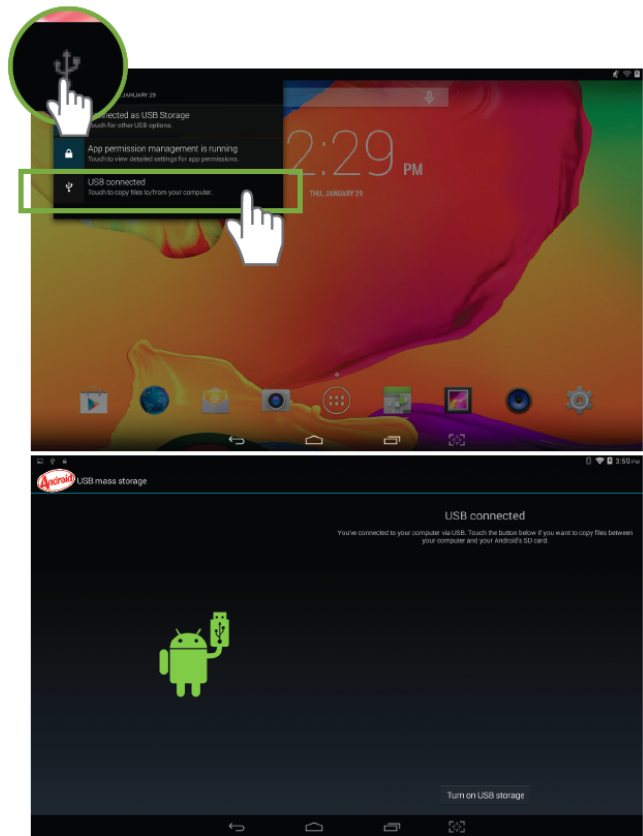


Connect Between Tablet & Computer

- 1 Connect the enclosed Micro USB to USB cable to your tablet and computer.



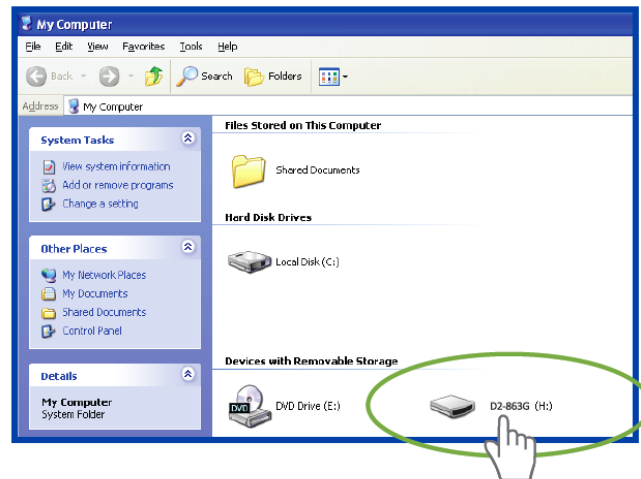
- 2 Touch "USB" icon on top left corner and select "USB Connected".



- 3 Select "Turn on USB storage" for your PC to recognize your tablet.

Connect Between Tablet & Computer

- 4 Once connected successfully, select “D2-863G” on your computer to review files in tablet or transfer documents in between.



- 5 To disconnect, simply click “Turn off USB storage” and unplug the USB cable from your tablet and PC.

Troubleshooting:

There's no driver required to connect your tablet with PC.

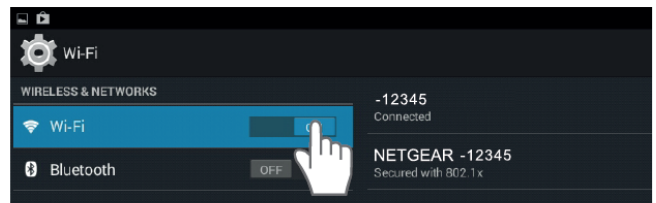
Basic Functions - WiFi

1 Select “ Settings” on Home screen.



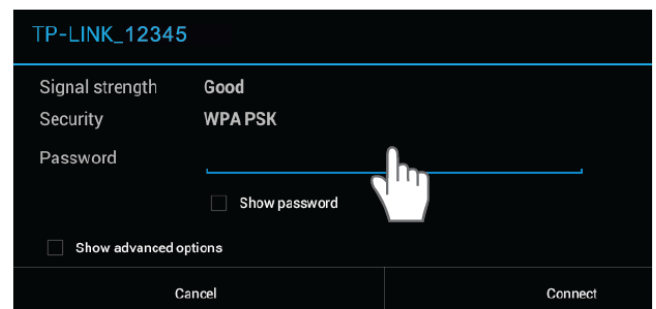
2 Touch Wi-Fi “OFF” to “ON”.

3 Select your designated Wi-Fi connection on list.



4 Enter the required Wi-Fi password*.

*If you need help finding your wireless network password, please contact your network provider.



5 Once connected, Wi-Fi connectivity icon will show at the top right corner.



FCC Statement

This device complies with Part 15 of the FCC Rules. Operation is subject to the following two conditions:

- (1) This device may not cause harmful interference, and
- (2) This device must accept any interference received, including interference that may cause undesired operation.

NOTE 1:

This equipment has been tested and found to comply with the limits for a Class B digital device, pursuant to part 15 of the FCC Rules. These limits are designed to provide reasonable protection against harmful interference in a residential installation. This equipment generates uses and can radiate radio frequency energy and, if not installed and used in accordance with the instructions, may cause harmful interference to radio communications. However, there is no guarantee that interference will not occur in a particular installation. If this equipment does cause harmful interference to radio or television reception, which can be determined by turning the equipment off and on, the user is encouraged to try to correct the interference by one or more of the following measures:

- Reorient or relocate the receiving antenna.
- Increase the separation between the equipment and receiver.
- Connect the equipment into an outlet on a circuit different from that to which the receiver is connected.
- Consult the dealer or an experienced radio/TV technician for help.

NOTE 2:

The manufacturer is not responsible for any radio or TV interference caused by unauthorized modifications to this equipment. Such modifications could void the user' s authority to operate the equipment.

Precautions

- Avoid drop or strong collision of the product or heavy vibration of the IPS screen, as it may cause damage or abnormal display of the IPSscreen.
- Some storage capacity may not be available for data storage.
- This product cannot be used with any unauthorized charger, otherwise it may burn the product, which is not covered by warranty. For any additional original charger, please contact customer service.
- To avoid any accidents, please do not use the product when driving or walking on the street.

Digital2® shall not be held liable for any loss of data caused by damage or repair of the product or any other reason. Please operate the product properly following the guidelines.

***NOTE: Pictures in this Quick Start Guide are for reference only.*