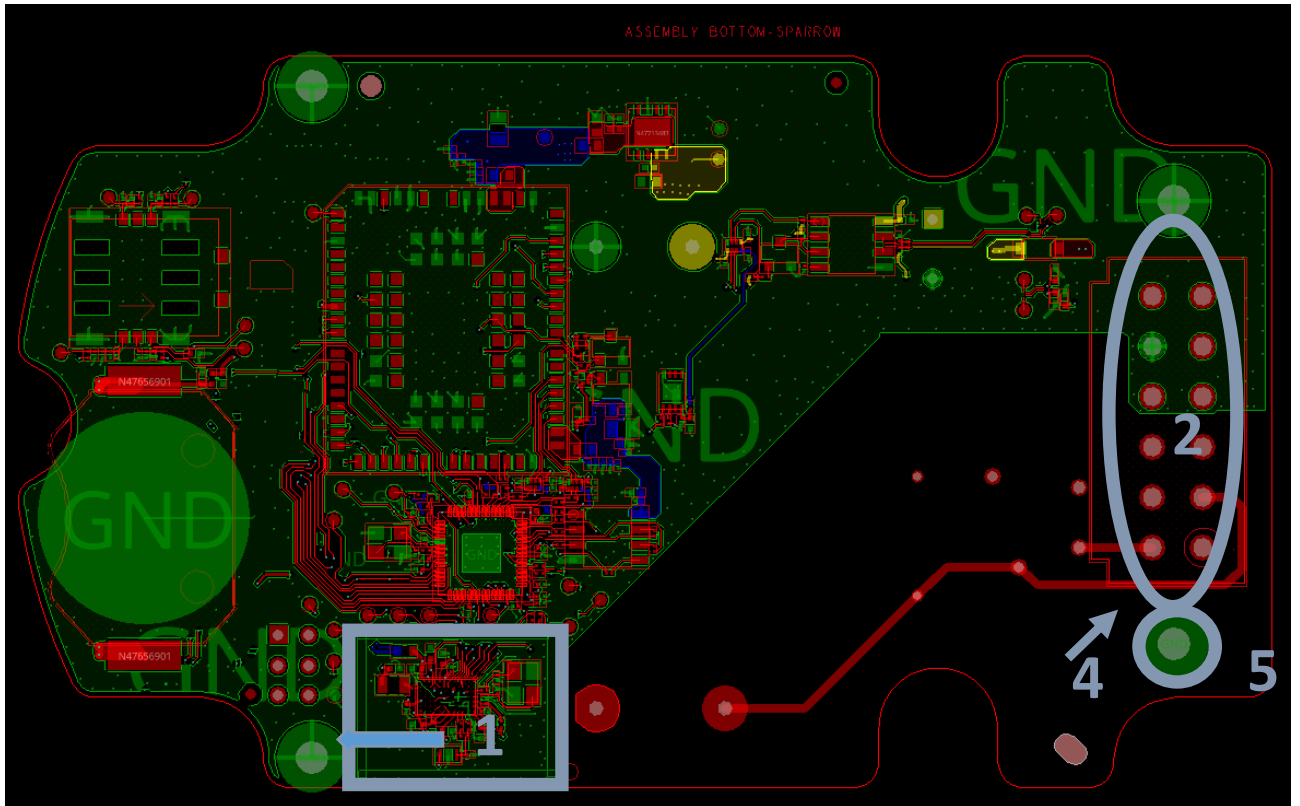
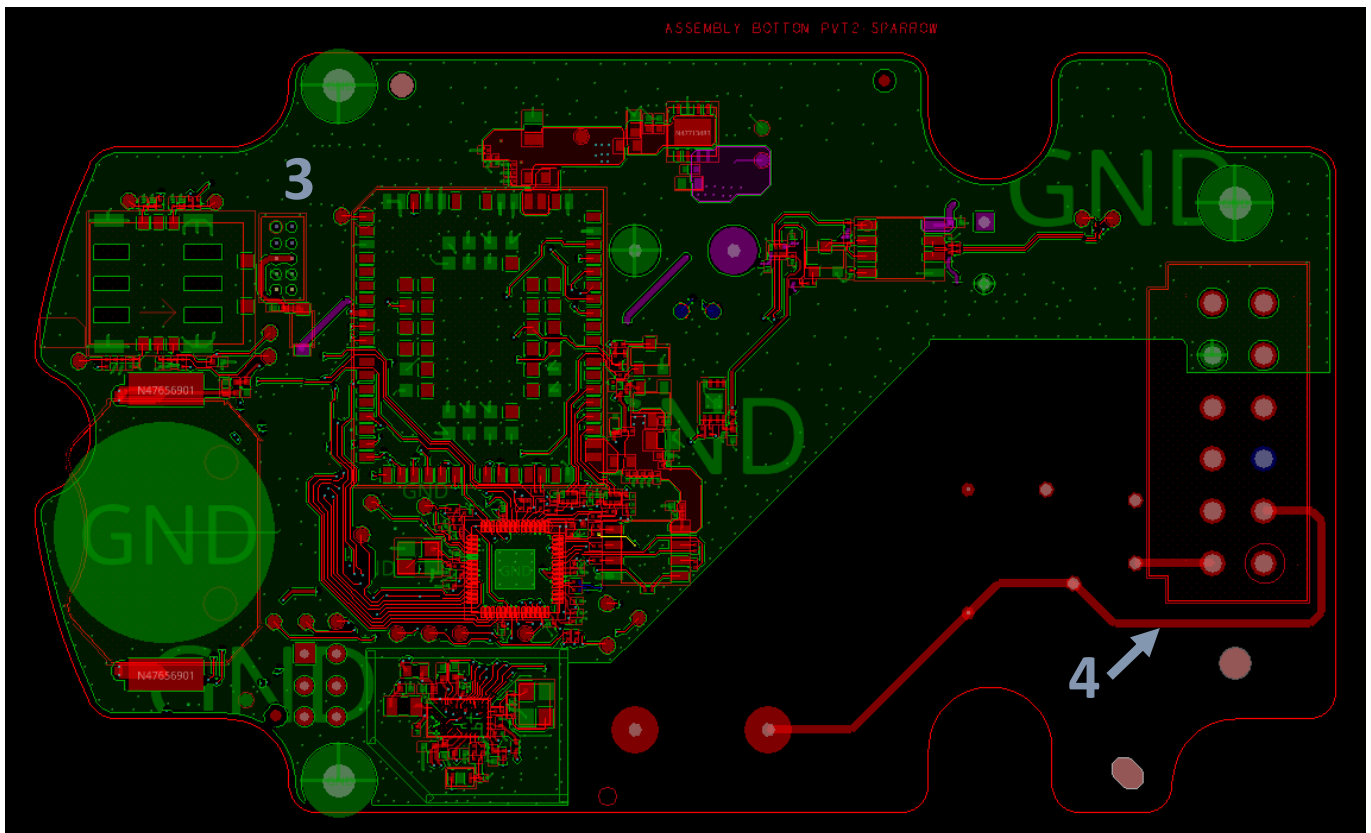


Appendix 1:

(1) .DVT Layout- Affected Areas



(2) .PVT Layout



(3) Differences Between DVT and PVT

- ✓ The group of components at Area 1 are moved to the left by about 2 mm to increase the gap to the AC supply pin on the right.
- ✓ USB connections in connector 2 are moved to a dedicated header 3.
 - ✧ USB is only used for flashing SW when the device is not in operation.
 - ✧ New Header is closer to the MCU and thus USB traces are shorter.
- ✓ Trace 4 (AC supply) is moved slightly away from connector 2
- ✓ Mounting hole at 5 changed to Non Plated Through hole.