

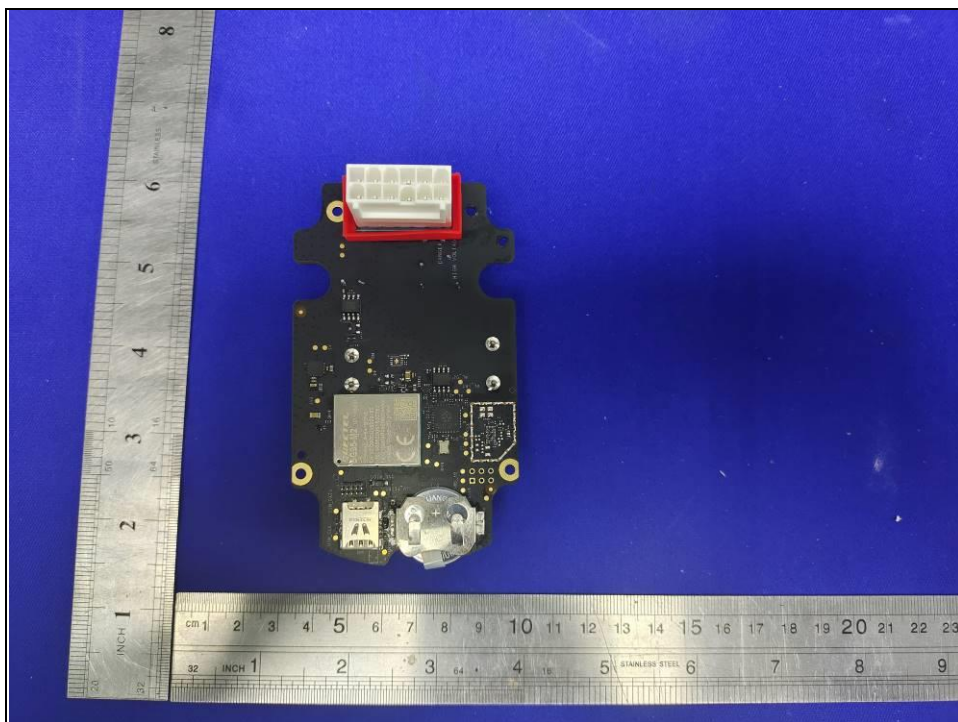
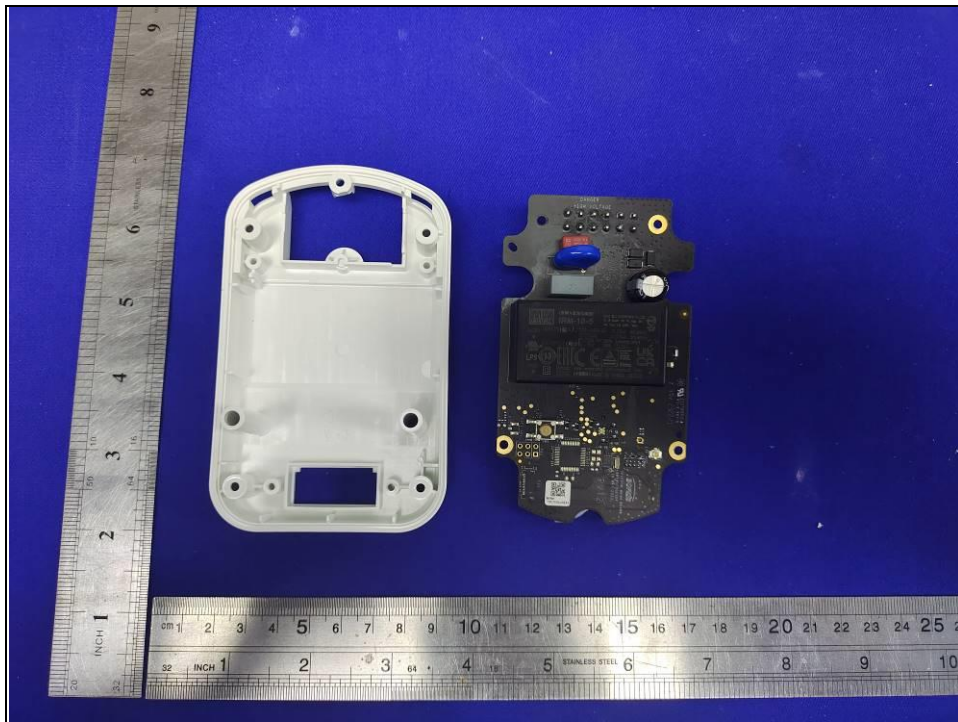
PHOTOGRAPHS OF THE EUT

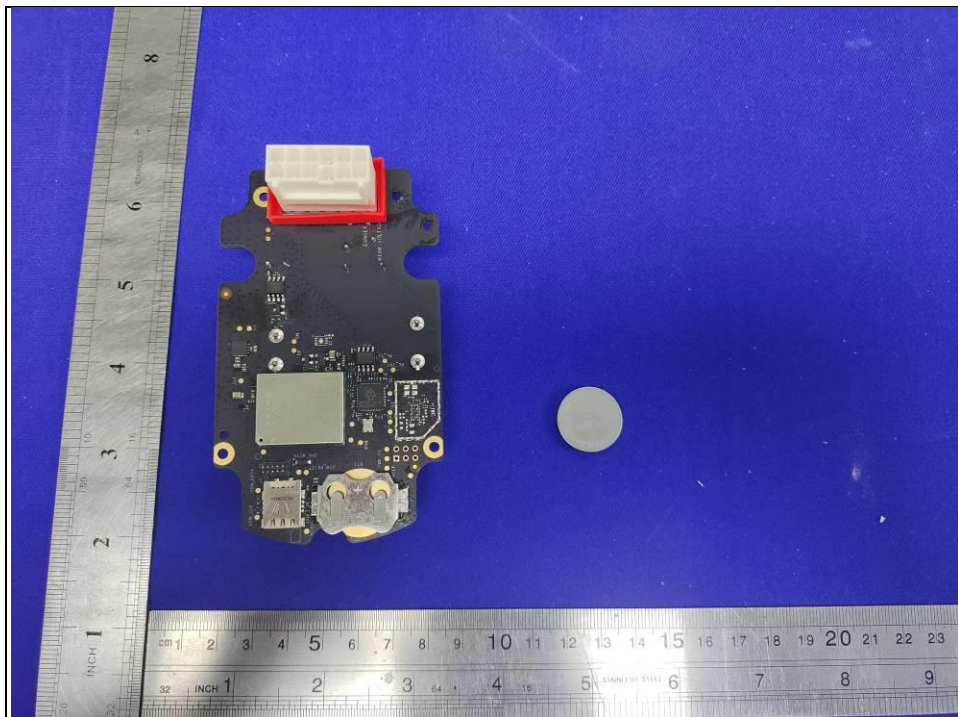
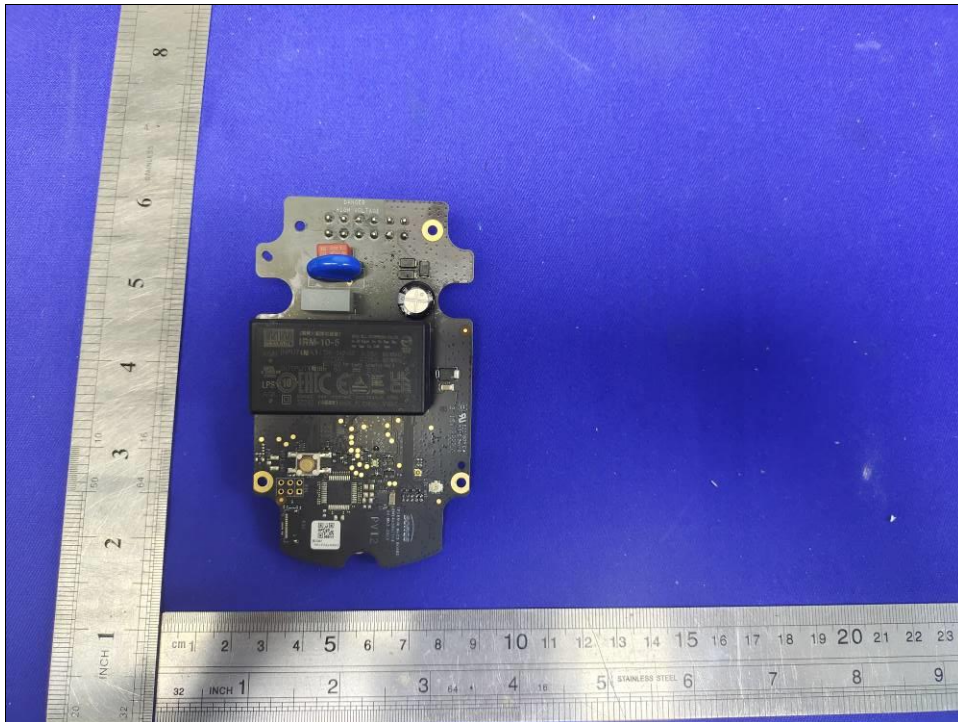
NOTE: US08Ba and US08B Difference description:

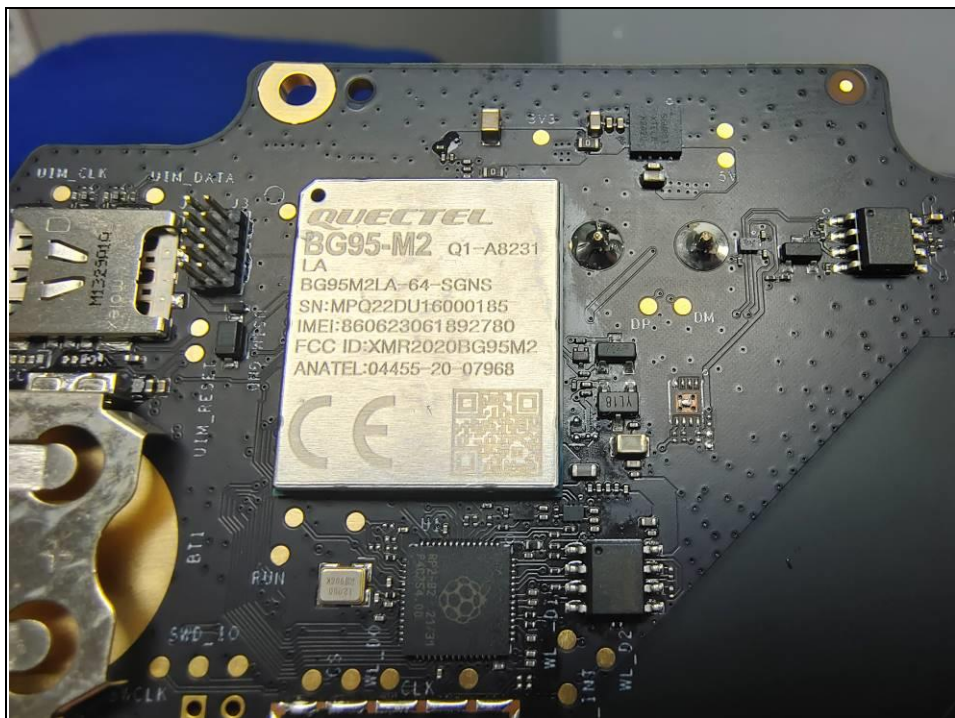
No	Model ID	Difference Description
1	US08B	Only supports Internal Antenna
2	US08Ba	Supports both Internal Antenna and External Antenna There is an additional Sub board which is connected with main board by RF cable for External antenna assembly.

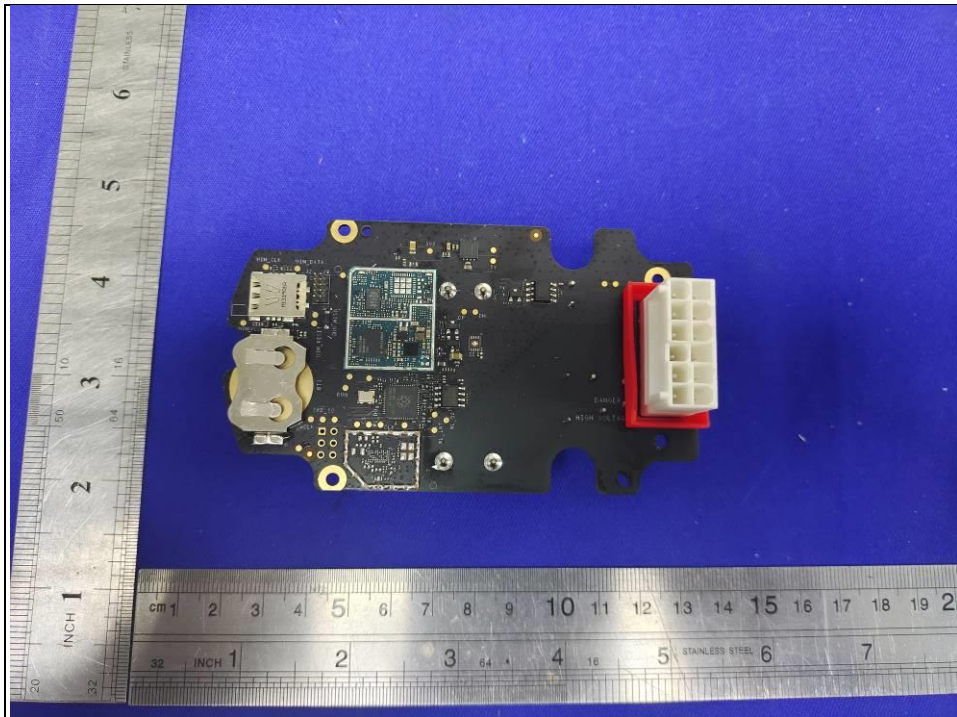
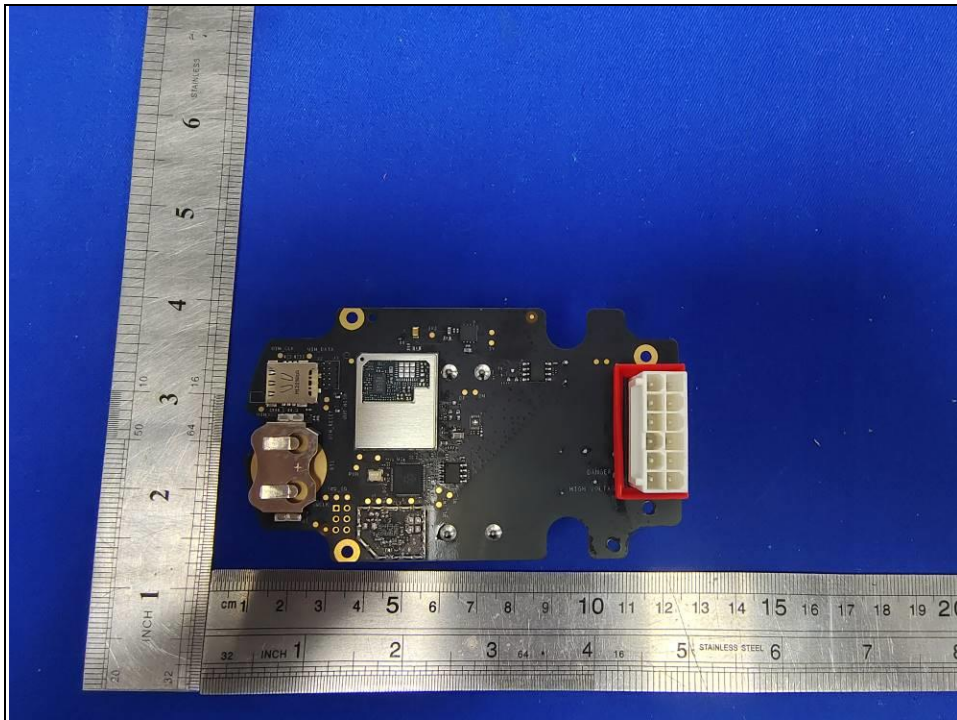
US08B

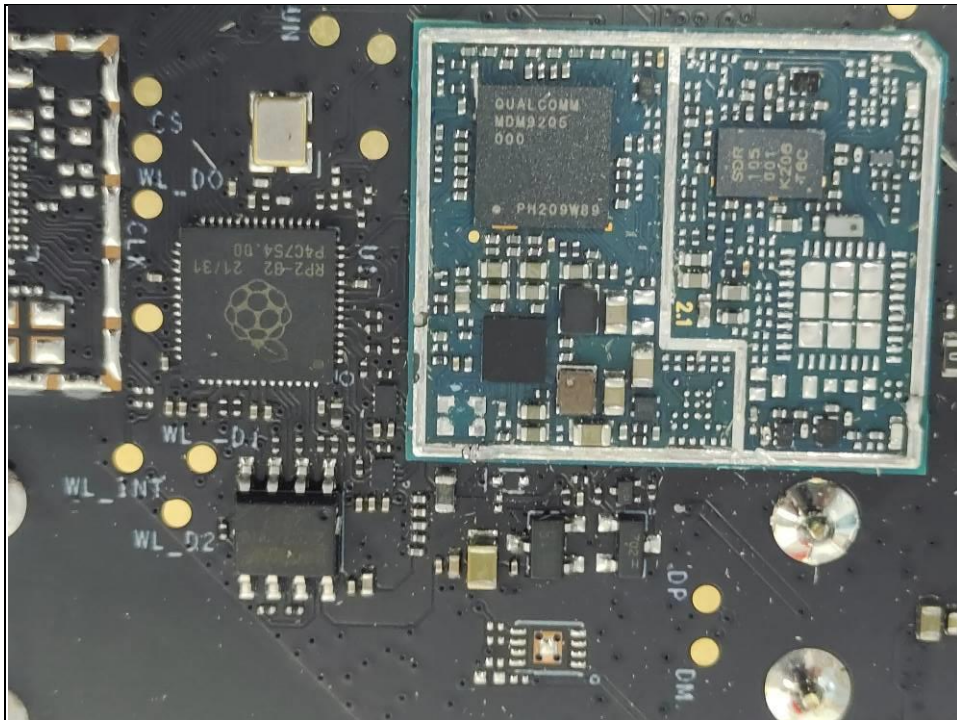














US08Ba

