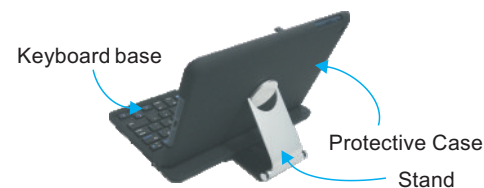


Wireless Keyboard



Caution: to properly operate this product please read the user manual thoroughly.

Schematic diagram

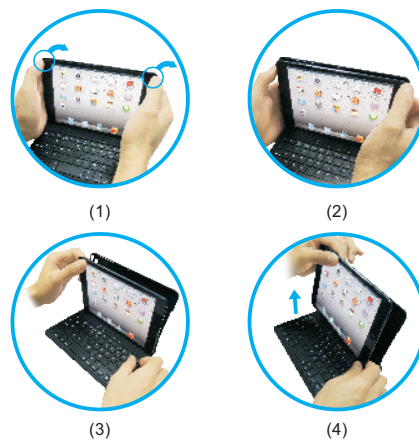


Using



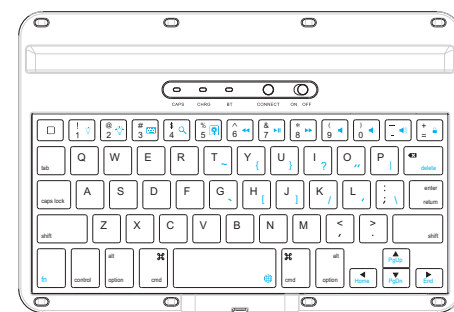
- 1) Open the protective case
- 2) Pull out the stand
- 3) Adjust the stand angle
- 4) Put the case on the groove of keyboard base

Installation and removal



- 1) Removing back protective piece. Hold tablet PC on both sides (picture) gently push back cover off the tablet PC with thumb (back piece held in place by two tabs.)
- 2) Proceed to "peel" cover away from tablet PC
- 3) Take tablet PC out
- 4) Take tablet PC out upwards.

Keyboard



Welcome

Congratulations on selecting the Bluetooth Wireless Keyboard for your high tech devices. The super slim keyboard is quiet and crafted out of high grade plastic. In this present age of portable tech gadgets this is an ideal product for your iPad.

Overview

- ☐ Main screen/Esc
- ⬅ PrevTrack
- ⏸ Play/pause
- ➡ NextTrack
- 🔇 Mute
- 🔊 Volume -
- 🔊 Volume +
- 🔒 Lock screen
- 🌐 Change Language
- ⌨ Function
- ⌫ Delete
- ⌘ Command

- **fn-combination key**, press FN key can input the blue characters above on the keyboard or control the blue keys.

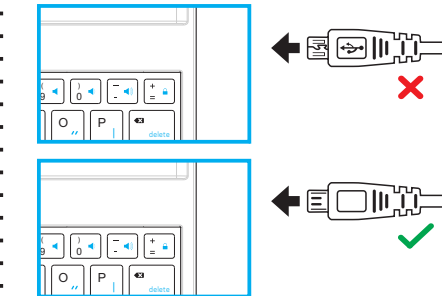
Prompted

- Blue LED blinking: Pairing
- Red LED on: Charging
- Green LED on: Battery is fully charged
- Green LED blinking: Low in Battery
- Yellow LED on: Caps lock

Installation Guide

Step 1. Charging the battery

1. For the first time user, Please charge the keyboard for at least 6 hours before using it. Thereafter, charge for at least 2 hours when the battery runs low.
2. The LED (green) will blink when battery is low. The LED (green) will stay solid when fully charged.
3. Connect the charging cable (included) to charge keyboard.



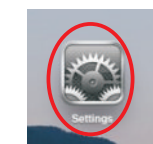
How to Charge the battery:

To charge the keyboard, connect the 5V.DC input from the keyboard into the computer USB port with the connector cable provided. The keyboard can function while charging.

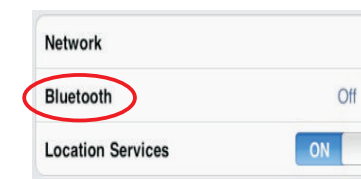
Step 2. Pairing your Bluetooth Keyboard with your iPad/iMac/iPhone or other Bluetooth enabled device.

The following sample shows how to pair the Bluetooth keyboard with your iPad. Before you can use your keyboard, you have to pair it with your iPad. Pairing allows your keyboard to communicate wirelessly with your iPad. You only have to perform the pairing once.

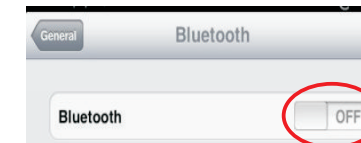
1. Turn on the keyboard and press the CONNECT key on the keyboard. The LED light will blink blue. Then on the screen of the iPad, you search for Settings-->Bluetooth.
2. Enable the Bluetooth function, and it will search for the Bluetooth keyboard automatically. When the Bluetooth keyboard is discovered, select the "Bluetooth keyboard" from the iPad screen, a passkey will appear on the screen of the iPad. Type in the passkey provided and press the ENTER key on the keyboard. Your Bluetooth keyboard will then be successfully paired with your iPad.



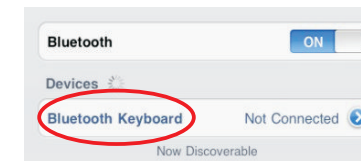
(1)



(2)



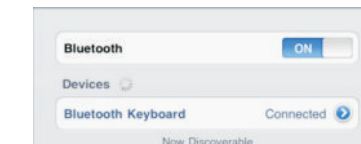
(3)



(4)



(5)



(6)

Troubleshooting

- If the keyboard is not working with the iPad (or other Bluetooth devices) make sure:
 - 1) The Bluetooth function on the iPad (or other Bluetooth devices) is enabled.
 - 2) The Bluetooth keyboard is within 33 feet of the iPad.
 - 3) The passkey is entered correctly.
 - 4) Restart your device.
 - 5) Make sure the keyboard is charged, recharge if low.
 - 6) If you press the CONNECT button when both devices have been connected already it will disrupt the established connection. The keyboard will exhibit as though it not connected with the keyboard. To solve the issue simply restart the keyboard by turning it OFF and then ON again. You do not need to repair the device if it was done previously.

Note: Keyboard should always remain on. No need to power off. Because keyboard has battery saving feature it will go to sleep when not in use. This way connection will never be lost. Keyboard will need to 5 seconds to wake up. Press a key and wait 5 seconds before using.

Product Specifications

- 1) Transmit Range: up to 10 meters
- 2) Range of Frequency: 2.4GHz Spectrum
- 3) Operating Voltage: 3.7Vdc (powered by Li-ion)
- 4) Operation current: <5mA
- 5) Standby current: 1.0mA
- 6) Sleep current: <0.25mA

Federal Communications Commission (FCC) Statement

This device complies with part 15 of the FCC Rules. Operation is subject to the following two conditions: (1) This device may not cause harmful interference, and (2) this device must accept any interference received, including interference that may cause undesired operation.

Note: This equipment has been tested and found to comply with the limits for a Class B digital device, pursuant to part 15 of the FCC Rules. These limits are designed to provide reasonable protection against harmful interference in a residential installation. This equipment generates, uses and can radiate radio frequency energy and, if not installed and used in accordance with the instructions, may cause harmful interference to radio communications. However, there is no guarantee that interference will not occur in a particular installation. If this equipment does cause harmful interference to radio or television reception, which can be determined by turning the equipment off and on, the user is encouraged to try to correct the interference by one or more of the following measures:

- Reorient or relocate the receiving antenna.
- Increase the separation between the equipment and receiver.
- Connect the equipment into an outlet on a circuit different from that to which the receiver is connected.
- Consult the dealer or an experienced radio/TV technician for help.

Warning: Changes or modifications made to this device not expressly approved by **Dov Enterprises Inc / SHARKK** may void the FCC authorization to operate this device.

Note: The manufacturer is not responsible for any radio or tv interference caused by unauthorized modifications to this equipment. Such modifications could void the user's authority to operate the equipment.