

深圳市亿圣邦科技有限公司

The Holy bond Electronics Co., Ltd 样品承认书

SPECIFICATION FOR APPROVAL

公司名称 (客户填写): 深圳市亿莱顿科技有限公司

物料代码 (客户填写): _____

规格型号 (客户填写): BC2718T

承认日期 (客户填写): _____

供应商名称 (SLK填写): The Holy bond Electronics Co., Ltd

供应商规格型号 (SLK填写): WIFI1:SLK-YLD-P10212-R-140I-B

WIFI2:SLK-YLD-P10212-L-190I-G

承 认 签 章

供 应 商 承 认 (SLK 填写栏)			深圳市亿莱顿科技有限公司		
工 程 师	审 核	批 准	工 程 师	审 核	批 准
陈仕联	黄震	林美财	刘建红		
盖章签署		盖章签署			
日 期	2023-10-18	日 期			
批示: <input type="checkbox"/> 接受 <input type="checkbox"/> 有条件接受					
备注 (客户填写):					

供应商名称: 深圳市亿圣邦科技有限公司

供应商地址: 东莞市塘厦镇蛟乙塘银园街 5 号厂房 2 楼

电 话: 0755-294140882

传 真: 0755-29163512

WiFi1 Antenna (P10212)

1. Explanation of Product number :

S L K - Y L D - P 1 0 2 1 2 - L - 1 4 0 I - B

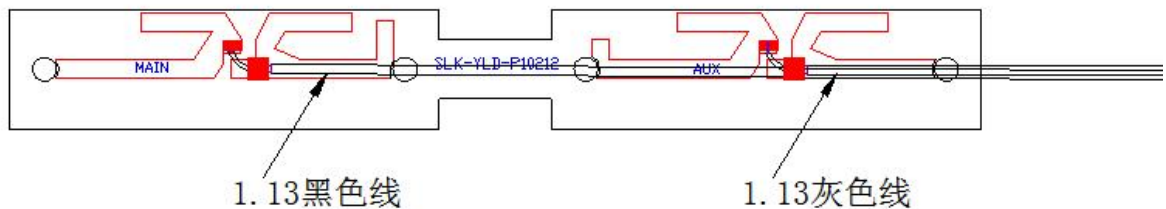
1

2

3

4

5



Product Code:

(1) Customer:

YLD:亿莱顿

(2) Project:

P10212: SLK-YLD-P10212 (WiFi1 antenna)

(3) Welding Position

R: Right

(4) Cable Length:

140I: 140*1.13MM一代端子

(5) Cable Color

B: Black

2. Features

*Stable and reliable in performances

*Compact size

*RoHS compliance

3. Applications

- * IEEE802.11 (a/b/g/n)
- * Hand-held devices when WIFI (802.11a/b/g/n) functions are needed

4. Description

Holy bond's FPC antenna series are specially designed for WIFI (802.11a/b/g/n) applications. Based on Holy bond's proprietary design and processes, this FPC antenna has excellent stability and sensitivity to consistently provide high signal reception efficiency.

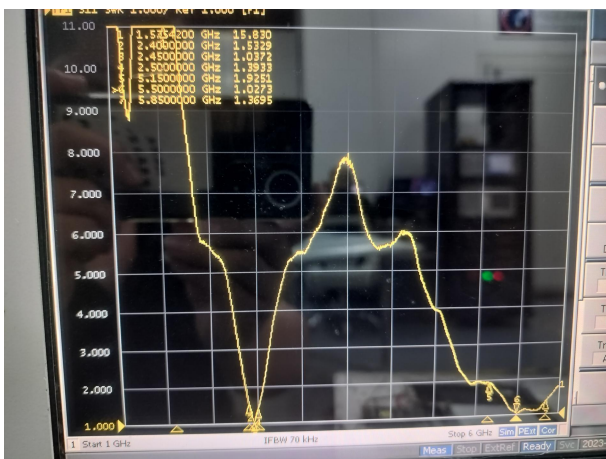
5. Electrical Specifications

5-1

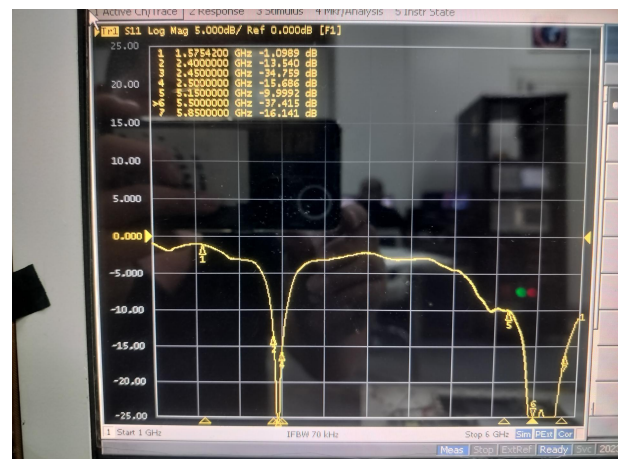
Characteristics	Specifications	Unit
Outline Dimensions	102*12.6*0.2	mm
Center Frequency	2.4-2.5-5.15-5.85	GHz
Bandwidth(under-10dB return loss)	130min	MHz
VSWR	3max	

5-2.

VSWR

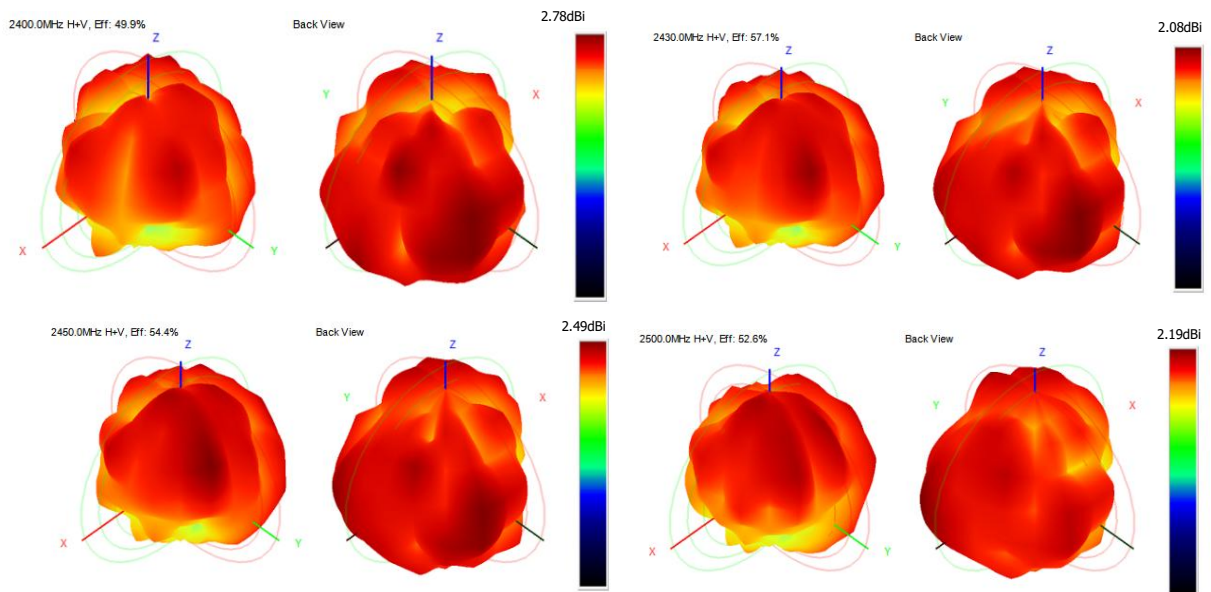


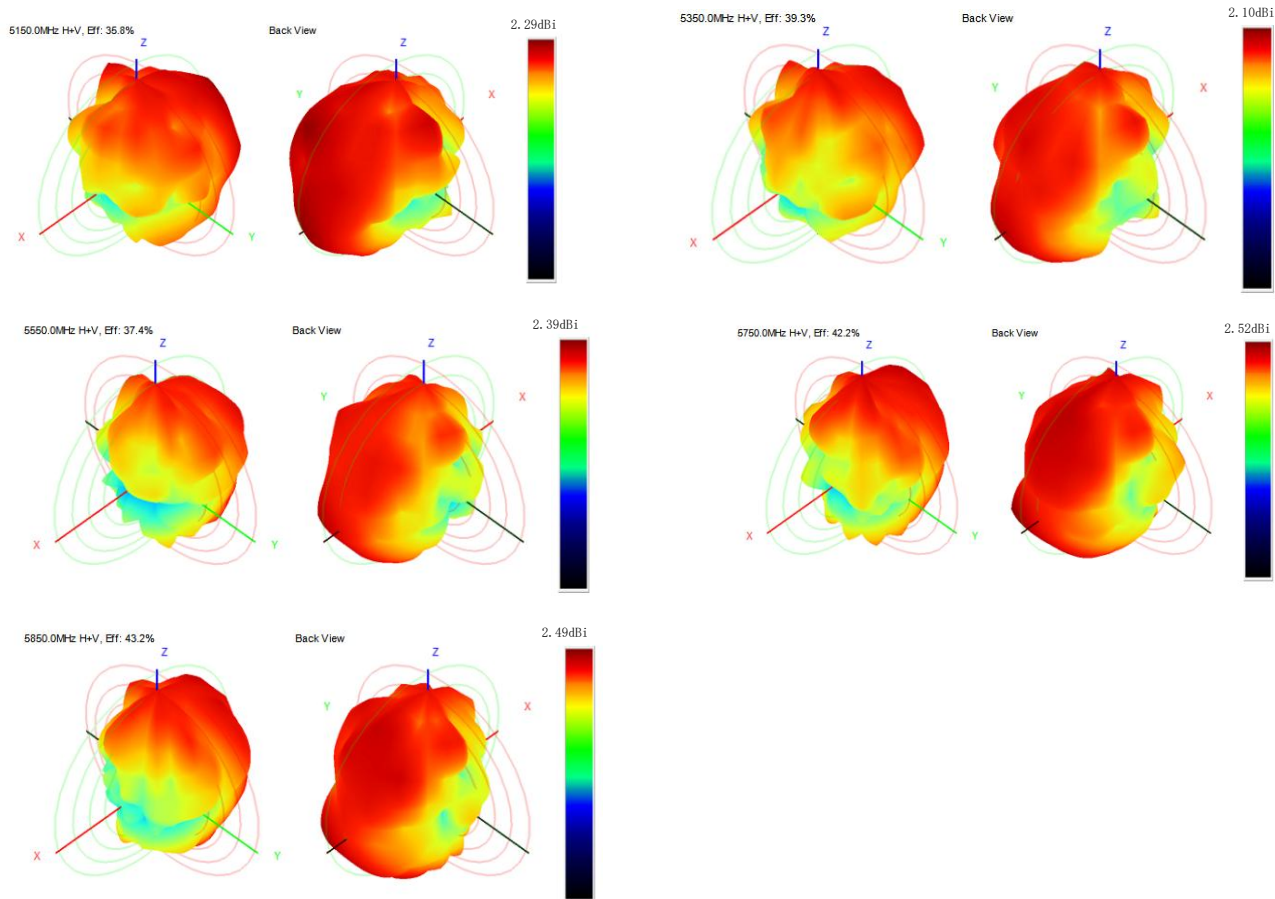
S11



5-3.WIFI +BT Antenna Gain/Efficiency/Radiation Pattern of 3D

Frequency (MHz)	Efficiency (dBi)	Gain (dBi)	Efficiency (%)
2400.0	-3.02	2.78	49.87
2410.0	-2.75	2.14	53.06
2420.0	-2.63	2.14	54.52
2430.0	-2.44	2.08	57.06
2440.0	-2.65	2.71	54.37
2450.0	-2.65	2.49	54.37
2460.0	-2.46	2.58	56.73
2470.0	-2.73	2.43	53.35
2480.0	-2.73	2.39	53.36
2490.0	-2.76	2.55	52.96
2500.0	-2.79	2.19	52.65
5150.0	-4.46	2.29	35.78
5350.0	-4.05	2.10	39.33
5550.0	-4.27	2.39	37.37
5750.0	-3.75	2.52	42.16
5850.0	-3.65	2.49	43.18

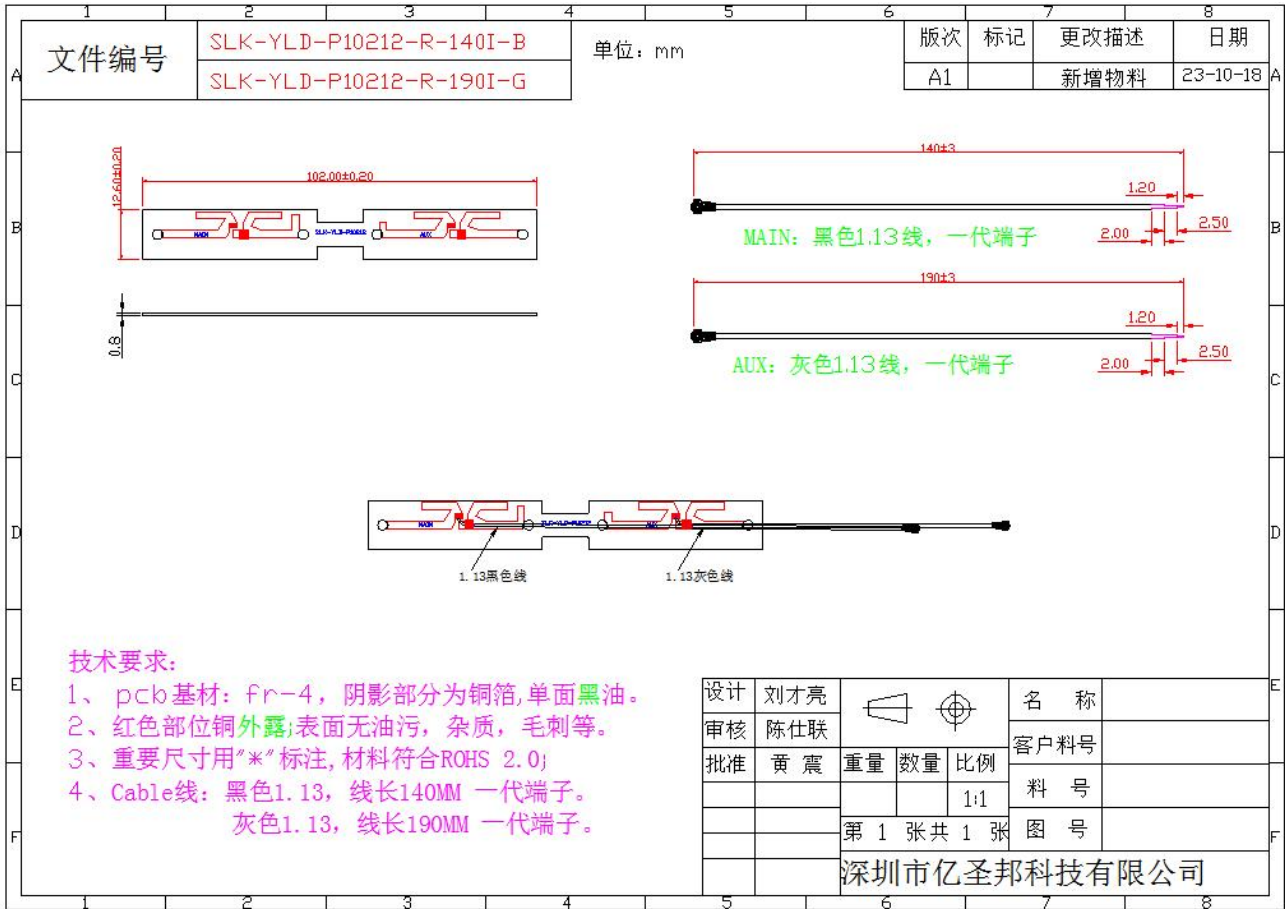




WIFI 有源测试

频段	1	6	11
B-TRP-11Mbps	16.28	17.58	17.2
B-TIS-11Mbps	-81.2	-81.36	-82.29
G-TRP-54Mbps	16.21	17.18	17.49
G-TIS-54Mbps	-68.55	-68.06	-68.24
N-TRP-MCS7	15.88	16.61	17.69
N-TIS-MCS7	-70.64	-70.15	-70.79
频段	36	149	165
A-TRP-54Mbps	15.31	14.33	15.46
A-TIS-54Mbps	-70.3	-71.14	-71.4

6. Antenna Dimensions (unit: mm)

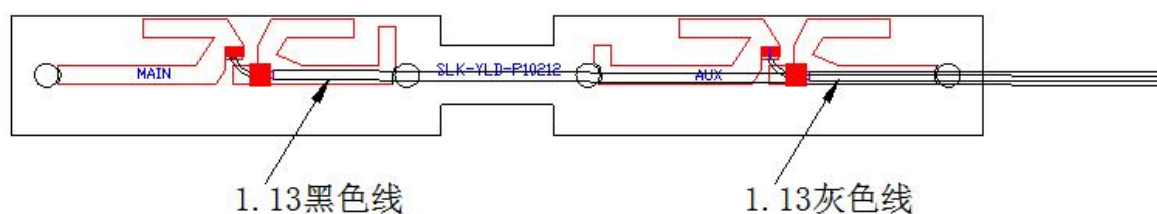


WiFi2 Antenna (P10212)

1. Explanation of Product number :

S L K - Y L D - P 1 0 2 1 2 - L - 1 9 0 I - G

1 2 3 4 5



Product Code:

(1) Customer:

YLD:亿莱顿

(2) Project:

P10212: SLK-YLD-P10212 (WiFi2 antenna)

(3) Welding Position

R: Right

(4) Cable Length:

190I: 190*1.13MM一代端子

(5) Cable Color

G: Gray

2. Features

*Stable and reliable in performances

*Compact size

*RoHS compliance

3. Applications

- * IEEE802.11 (a/b/g/n)
- * Hand-held devices when WIFI (802.11a/b/g/n) functions are needed

4. Description

Holy bond's FPC antenna series are specially designed for WIFI (802.11a/b/g/n) applications. Based on Holy bond's proprietary design and processes, this FPC antenna has excellent stability and sensitivity to consistently provide high signal reception efficiency.

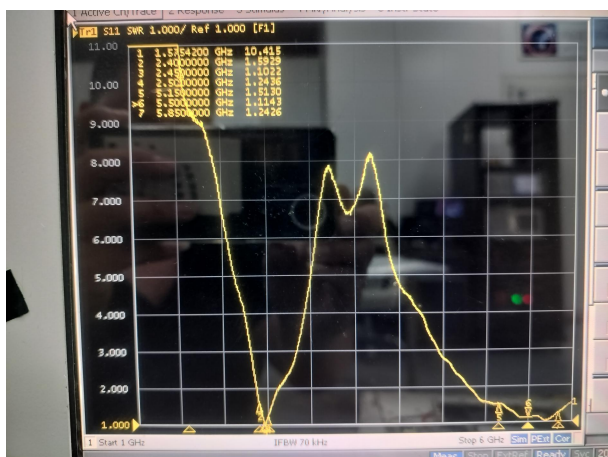
5. Electrical Specifications

5-1

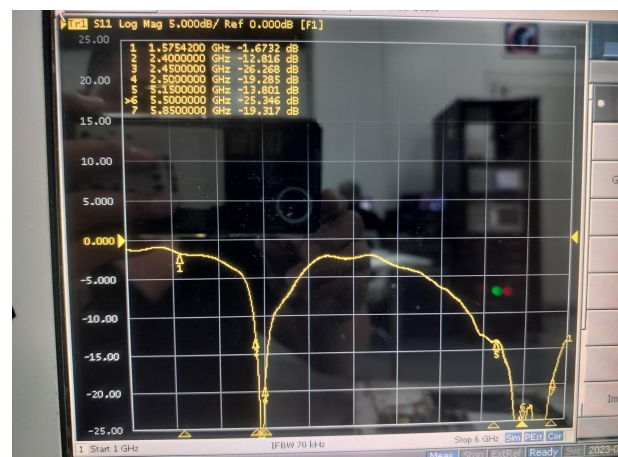
Characteristics	Specifications	Unit
Outline Dimensions	102*12.6*0.2	mm
Center Frequency	2.4-2.5-5.15-5.85	GHz
Bandwidth(under-10dB return loss)	130min	MHz
VSWR	3max	

5-2.

VSWR

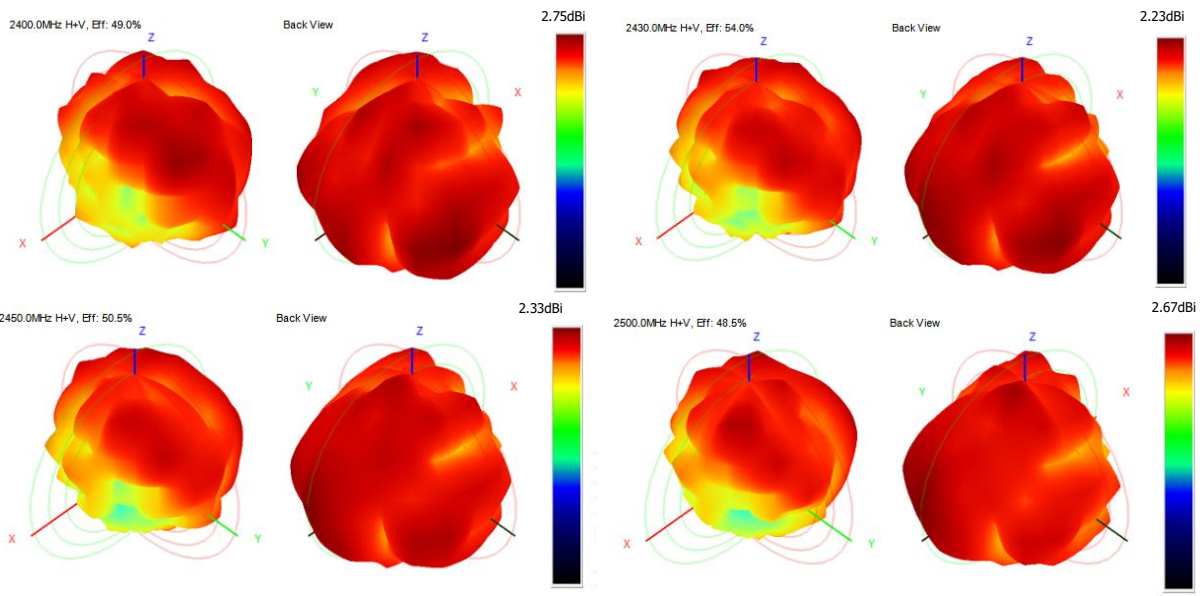


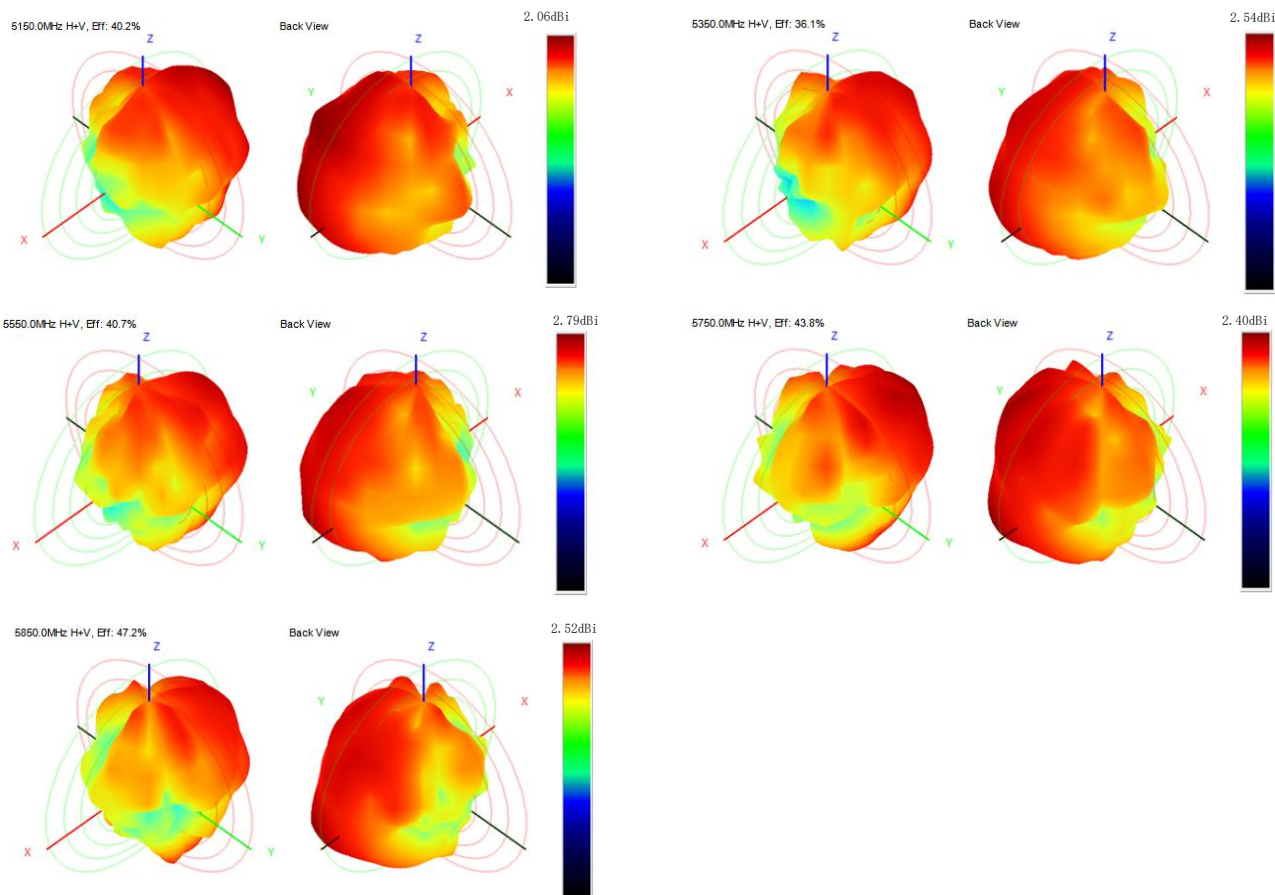
S11



5-3.WIFI +BT Antenna Gain/Efficiency/Radiation Pattern of 3D

Frequency (MHz)	Efficiency (dBi)	Gain (dBi)	Efficiency (%)
2400.0	-3.10	2.75	49.00
2410.0	-2.85	2.16	51.90
2420.0	-2.76	2.12	52.92
2430.0	-2.67	2.23	54.03
2440.0	-2.97	2.23	50.48
2450.0	-2.97	2.33	50.48
2460.0	-2.73	2.76	53.33
2470.0	-3.05	2.74	49.54
2480.0	-3.07	2.42	49.28
2490.0	-3.14	2.43	48.47
2500.0	-3.14	2.67	48.54
5150.0	-3.95	2.06	40.24
5350.0	-4.42	2.54	36.13
5550.0	-3.91	2.79	40.67
5750.0	-3.59	2.40	43.79
5850.0	-3.26	2.52	47.16

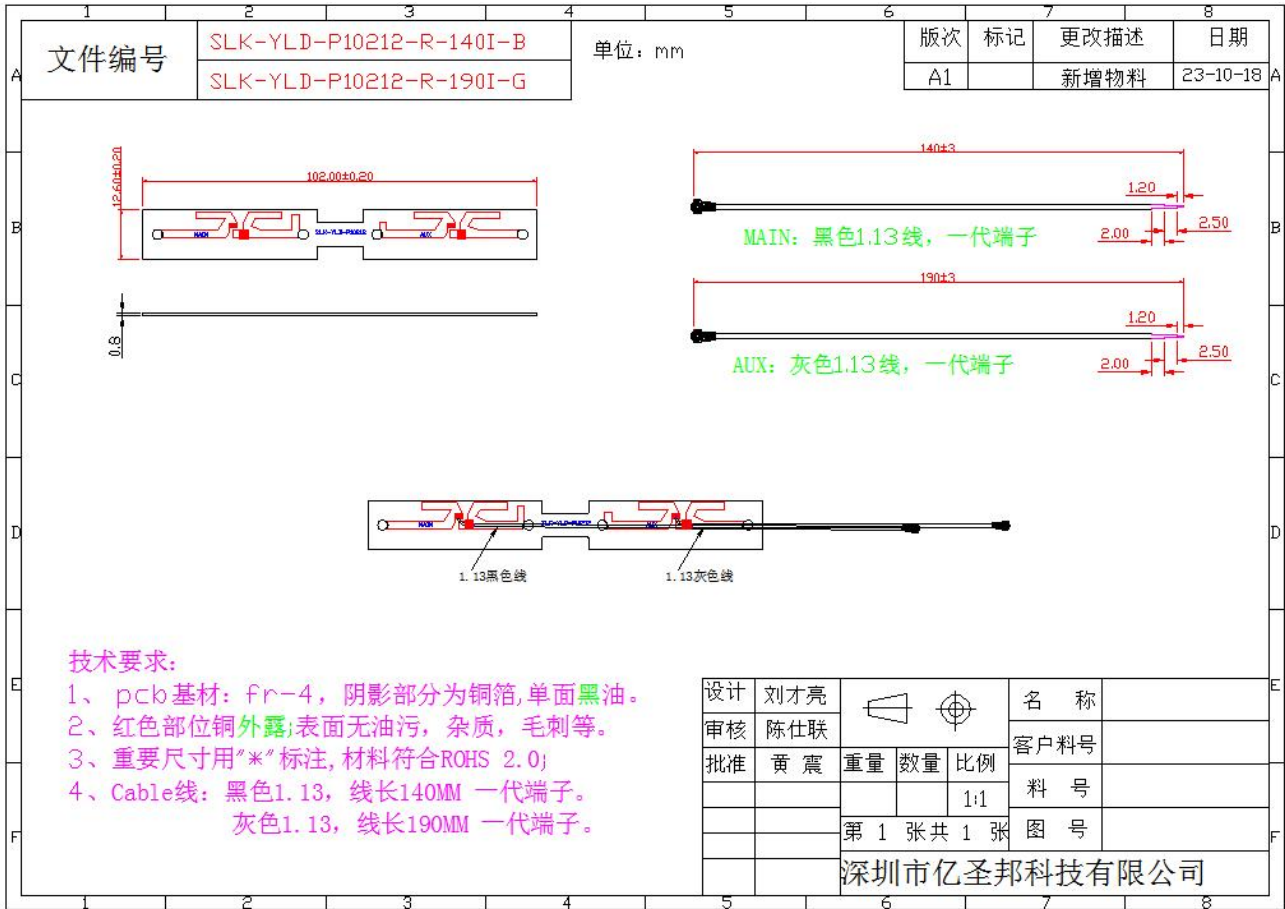




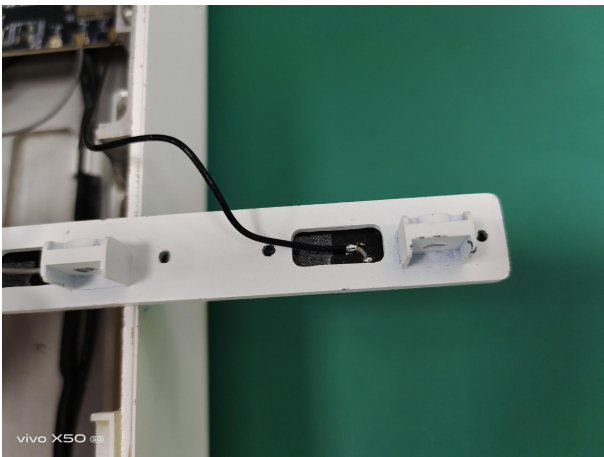
WIFI 有源测试

频段	1	6	11
B-TRP-11Mbps	16.28	17.58	17.2
B-TIS-11Mbps	-81.2	-81.36	-82.29
G-TRP-54Mbps	16.21	17.18	17.49
G-TIS-54Mbps	-68.55	-68.06	-68.24
N-TRP-MCS7	15.88	16.61	17.69
N-TIS-MCS7	-70.64	-70.15	-70.79
频段	36	149	165
A-TRP-54Mbps	15.31	14.33	15.46
A-TIS-54Mbps	-70.3	-71.14	-71.4

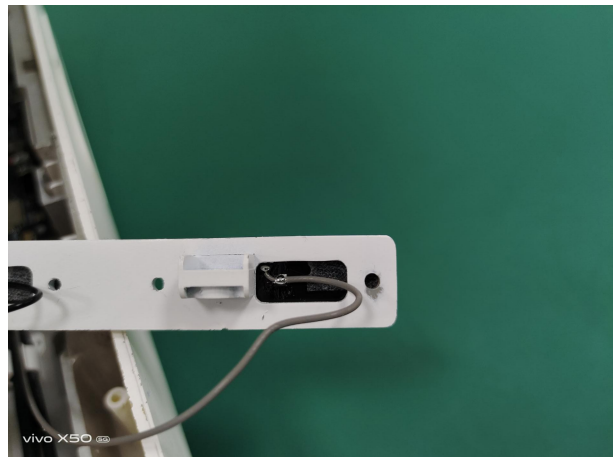
6. Antenna Dimensions (unit: mm)



7. Antenna Picture



WiFi 1 天线



WiFi 2 天线