

Antenna Specification

Product specification model: WIFI:SLK-YLD-3222B2-R-305I-G

Antenna Type: FPC Antenna

Date: 2024.06.15

Manufature: Shenzhen Yishengbang Technology Co., Ltd.

Adress: Room 101, Building C, Qianwan Hard Technology
Industrial Park, Baoan District, Shenzhen, China

Telephone: 18025305599

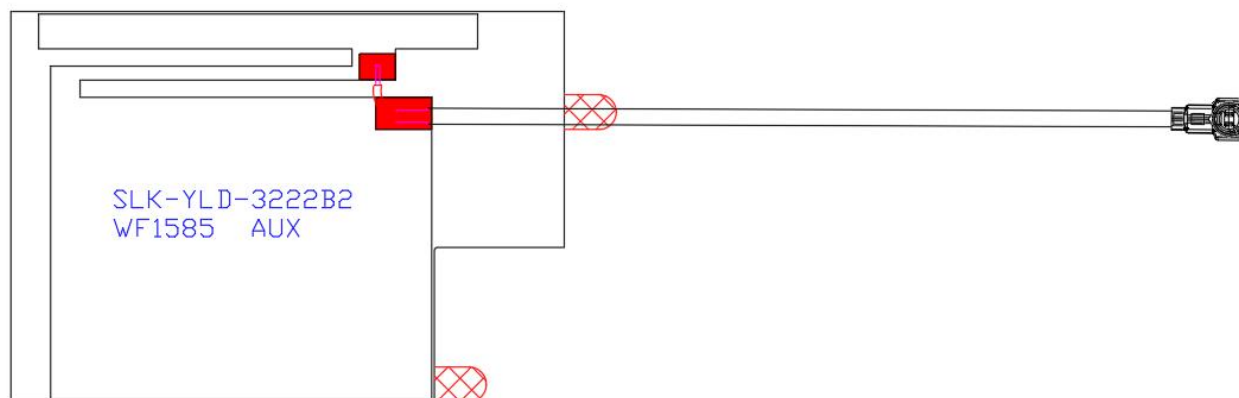
Telephone: 18666299104

WIFI Antenna (3222B2)

1. Explanation of Product number :

S L K - Y L D - 3 2 2 2 B 2 - R - 3 0 5 I - G

1 2 3 4 5



Product Code:

(1) Customer:

YLD:亿莱顿

(2) Project:

3222B2: SLK-YLD-3222B2 (WIFI antenna)

(3) Welding Position

R: Right

(4) Cable Length:

305I: 305*1.13MM 一代端子

(5) Cable Color

G: Gray

2. Features

*Stable and reliable in performances

*Compact size

*RoHS compliance

3. Applications

* IEEE802.11 (a/b/g/n)

* Hand-held devices when WIFI (802.11a/b/g/n) functions are needed

4. Description

Holy bond's FPC antenna series are specially designed for WIFI (802.11 a/b/g/n) applications. Based on Holy bond's proprietary design and processes, this FPC antenna has excellent stability and sensitivity to consistently provide high signal reception efficiency.

5. Electrical Specifications

5-1

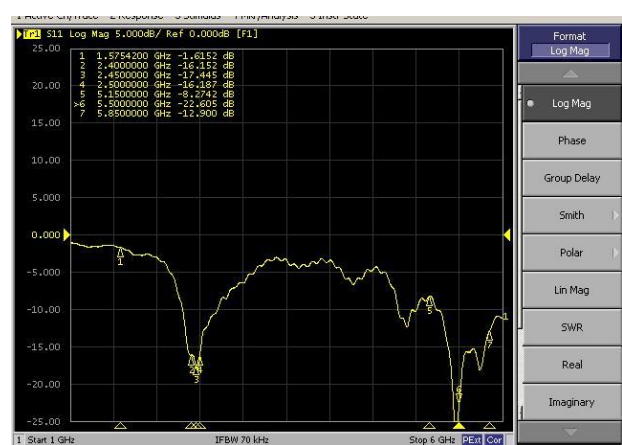
Characteristics	Specifications	Unit
Outline Dimensions	31.95x22.5x 0.12	mm
Center Frequency	2.4-2.5/5.15-5.85	GHz
Bandwidth(under-10dB return loss)	130min	MHz
VSWR	3max	
Impedance	50	Ω
Polarization	Linear Polarization	

5-2.

VSWR

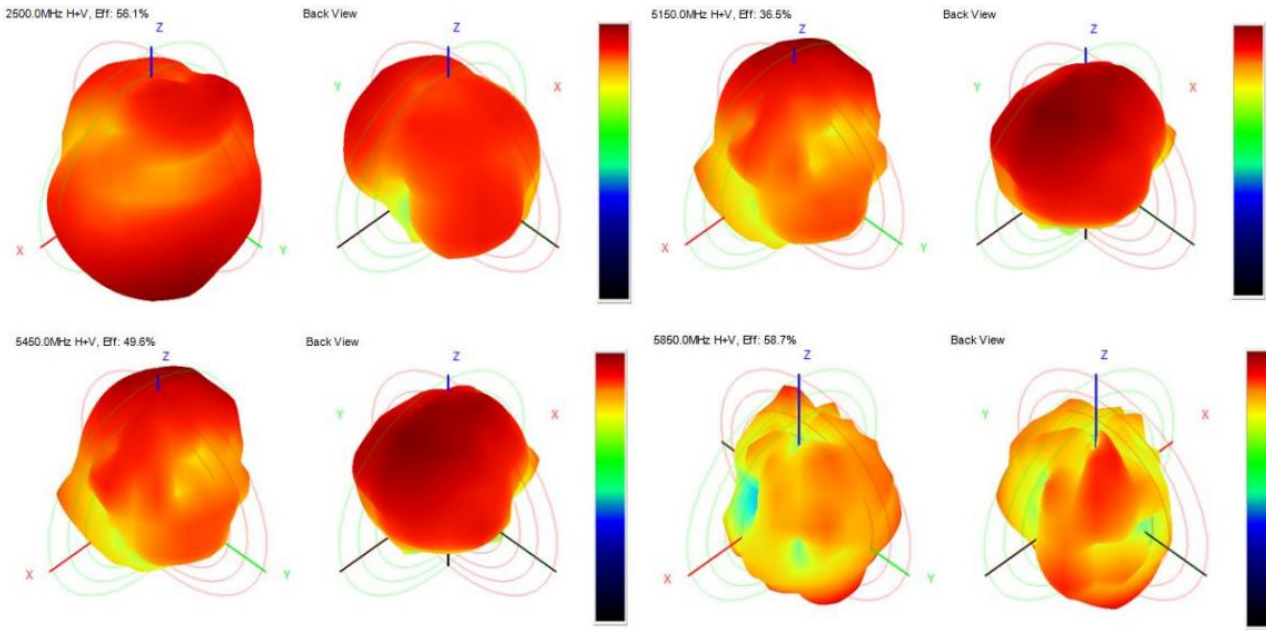
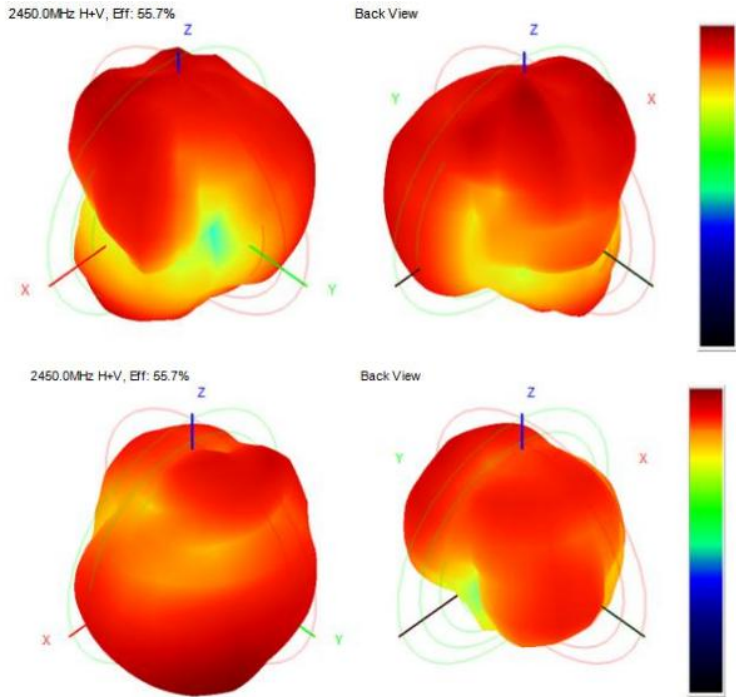


S11



5-3.WIFI AUX Antenna Gain/Efficiency/3DDATA

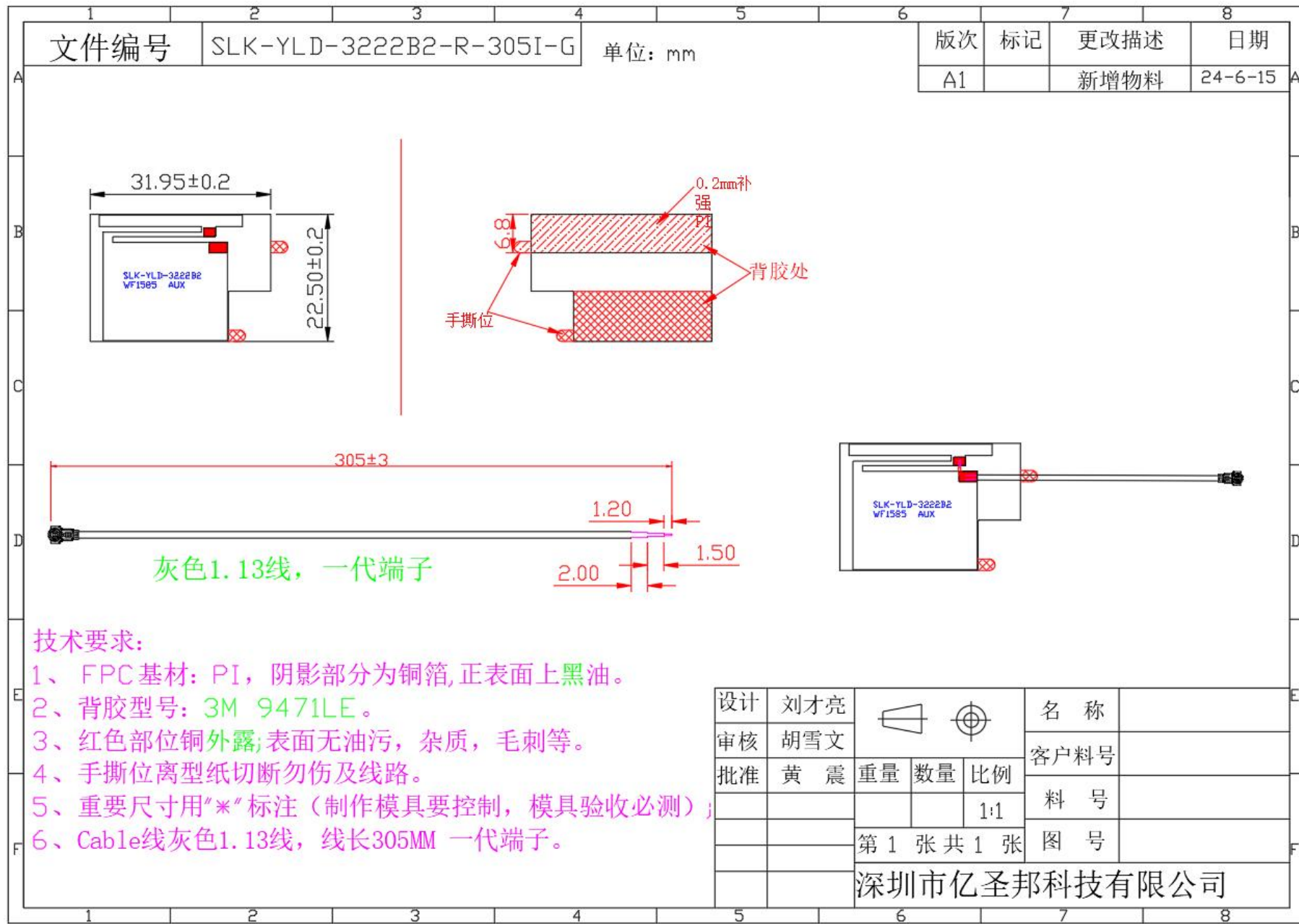
Frequency (MHz)	Efficiency (dBi)	Gain (dBi)	Efficiency (%)
2400	-3.02	1.39	49.85
2410	-2.88	1.31	51.51
2420	-2.61	1.50	54.89
2430	-2.53	1.60	55.82
2440	-2.53	1.31	55.80
2450	-2.54	1.53	55.73
2460	-2.32	1.75	58.56
2470	-2.59	1.71	55.08
2480	-2.50	1.05	56.25
2490	-2.46	1.30	56.76
2500	-2.51	1.32	56.13
5150	-4.37	2.16	36.58
5250	-3.79	2.77	41.77
5350	-3.23	2.18	47.53
5450	-3.04	2.89	49.65
5550	-3.49	2.51	44.79
5650	-3.06	2.69	49.41
5750	-2.96	2.63	50.58
5850	-2.31	2.95	58.69



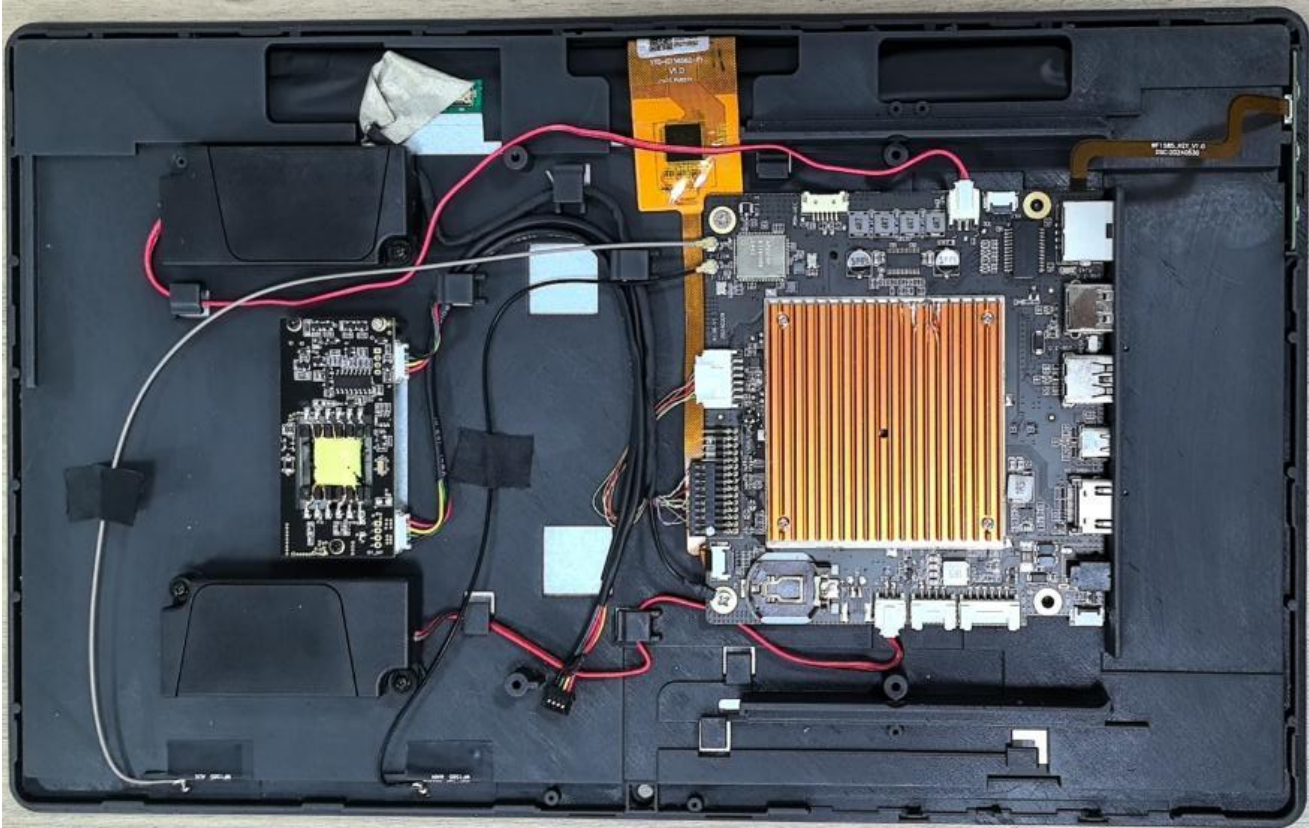
5-4.WIFI active test

WIFI有源测试			
频段	1	6	11
B-TRP-11Mbps	12.49	13.39	13.93
B-TIS-11Mbps	-81.48	-80.56	-80.50
G-TRP-54Mbps	12.53	13.27	13.13
G-TIS-54Mbps	-72.75	-73.14	-72.33
N-TRP-MCS7	12.49	13.41	13.07
N-TIS-MCS7	-70.17	-70.77	-70.65
频段	36	149	165
A-TRP-54Mbps	13.80	13.86	13.26
A-TIS-54Mbps	-72.74	-71.55	-72.05

6. Antenna Dimensions (unit: mm)



7. Antenna Picture



WIFI 分集天线